



DIVISION OF CORRECTION BOARD REPORT

September 2022

Dexter Payne
Director



POPULATION REPORT

RESEARCH/PLANNING

August 2022 Admissions and Releases – Admissions for August 2022 totaled **538** (467-males and 71-females) while releases totaled **425** (340-males and 85 females) for a net increase in-house of 113 inmates.

Inmate Population Growth/Projection – At the end of August 2022, the jurisdictional population for the Division of Correction totaled **17,274**, representing an increase of **251** inmates since the first of January 2022. At reporting time, calendar year 2022 has seen an average rate of **31** inmates per month, which is down from an average monthly increase of **77** inmates per month during calendar year 2021.

Average County Jail Backup – The backup in the county jails averaged **1,617** inmates per day during the month of August 2022, which was up from the per-day average of **1,541** inmates during the month of July 2022. Of the **1,617** average, short-term revocations accounted for **595** (518 males and 77 females) during the month.

INSTITUTIONS

INMATE INSTITUTIONAL GRIEVANCES

Inmate Formal/Informal Grievances: During August, a total of 1,293 formal grievances and 1,903 informal grievances were filed at various units.

Institutional Grievances Appeals: There was a total of 426 appeals of institutional grievances received in August. Of those, 312 were acknowledged and 114 were rejected for various reasons. Of the total 420 appeals answered, 418 had no merit and two had merit.

FARMS

The month of August remained hot and dry, with the exception of a few beneficial rains.

Cummins began harvesting corn and rice during the month. Corn yields have been off, which is in line with other farms throughout the county. The earlier-planted corn seems to have been hit hardest. Apparently, the issue is due to it trying to pollinate and fill during the extreme heat. Rice yields have been good and comparable to last year.

Hay continues to a priority at all locations. The goal is to get at

least 7,000 rolls for all farms to make it through the winter.

Vegetables have continued coming in. EARU and Cummins harvested peas, and reports have indicated that the kitchens have liked them. Cucumber, squash and watermelons have been moving out of the fields as well.

REGIONAL MAINTENANCE HOURS

Regional Maintenance Hours	August 2022
Benton Unit	7,060
Delta Regional Unit	3,680
East Arkansas Regional Unit	1,952
Grimes Unit	2,388
McPherson Unit	1,888
Mississippi County Work Release	942
North Central Unit	6,480
Ouachita River Correctional Unit	2,499
Randall L. Williams Unit	5,912
Texarkana Regional Corr. Ctr.	2,860
Tucker Unit	1,288
Varner Unit	3,680
Wrightsville Unit	3,048
Total Hours	43,677

WORK RELEASE RENT REPORT

Unit	August 2022
Benton Unit	\$133,484.00
Mississippi County Work Release	\$66,997.00
Northwest Arkansas Work Release	\$49,113.00
Pine Bluff Work Release	\$44,727.00
Texarkana Regional Corr. Ctr.	\$44,251.00
Wrightsville Hawkins Unit	\$22,780.00
Total	\$361,352.00

REENTRY

RANDALL L. WILLIAMS JUVENILE EDUCATION PROGRAM

August 2022 Capacity: 20	Beginning Count	New Commitments	DCR/Punitive	Transferred/ Turned 18*	Paroled	End Count
Juveniles*	9	2	1	2	0	9

*Juveniles are transferred from the program once they reach the age of 18.

ESTER UNIT PROGRAM BUILDING

August 2022 Capacity: 20	Beginning Count	Admitted	Graduated	Removed	End Count
Behavioral/Life Skills	11	1	0	2	10
Inside Out	12	0	0	1	11
Release Program	29	9	0	9	29
Veteran Program*	46	6	0	5	47
TOTAL	98	16	0	17	97

Behavioral/Life Skills - Start Date - July 18, 2022

Release Program - Start Date - July 18, 2022

*Veteran - Participants still assigned to Veteran Barracks. 46 graduated in July, but 41 of them are still in the barracks.

WORKFORCE ALLIANCE FOR GROWTH IN THE ECONOMY (WAGE)

August 2022 Capacity: 120 Unit:	Beginning Count	Admissions During Mo.	Completed	Removed*	End Count
Delta	11	7	11	0	7
East Arkansas	0	0	0	0	0
Ester	10	0	0	0	10
Hawkins	12	0	12	0	0
McPherson	0	0	0	0	0
Ouachita River	24	13	7	4	26
Tucker	8	0	0	0	8
Wrightsville	0	0	0	0	0
TOTAL	65	20	30	4	51

*The "Removed" column indicates the number of participants who transferred, signed out, received a disciplinary, were removed because test scores were not returned/were too low to continue, or were released from prison.

ADVANCED PRINCIPLES AND APPLICATIONS FOR LIFE PROGRAM (APAL)

August 2022 Capacity: 86	Beginning Count	Admissions During Mo.	Removed*	End Count
Ester	50	5	0	55
Hawkins	17	4	7	14
TOTAL	67	9	7	69

Advanced PAL is an 18-month reentry program that combines a pre-release curriculum with the PAL program.

*The "Removed" column indicates the number of participants who paroled, completed the program, withdrew from the program, transferred, or were removed from the program for another reason.

WRIGHTSVILLE-HAWKINS PATHWAY TO FREEDOM PROGRAM

August 2022 Capacity: 200	Beginning Count	Enrolled During the Month	Removed	End Count*
Wrightsville-Hawkins PTF	192	14	10	196

THINK LEGACY

August 2022 Capacity: 635 Unit	Beginning Count	Admitted	Graduated	Removed*	End Count
Cummins	19	0	19	0	19
Delta Regional	9	0	3	0	6
East Arkansas Regional	16	0	16	2	14
McPherson	18	0	11	7	11
North Central	22	0	17	5	17
Ouachita River	16	0	15	1	15
Tucker**	20	0	19	1	19
Total	120	0	100	16	101

*The "Removed" column indicates the total number of participants who paroled, signed out, transferred, or were removed from the program for any other reason and are no longer in the barracks.

**Tucker Unit was on lockdown during August and graduation scheduled for September 9.

TRAINING

DIVISION OF CORRECTION TRAINING - August 2022

BASIC TRAINING DIVISION –

BCOT Class 2022-I, led by Instructor Michael Lennox, graduated on August 8 with a total of 55 cadets. The Willis H. Sargent Award was presented to Shauntay Watson of the Wrightsville Unit.

Academic Awards were presented to the following:

- 1st – Steteria Howard, Cummins Unit
- 2nd – John Deaton, Varner Unit
- 3rd – Dee Hudson, Benton Unit

Recipients of *Physical Fitness Awards* were:

- 1st – Robertnessia Kitchen, Cummins Unit
- 2nd – Vincent Drake Jr., Delta Regional Unit
- 3rd – James Gibson, Benton Unit

Instructor Nicholas Reed's **BCOT Class 2022-J** graduated on August 26, with a total of 33 cadets.

Academic Awards were presented to the following:

- 1st – Mark Simino, North Central Unit
- 2nd – Nakissa Nash, Varner Unit
- 3rd – Jimmy C. Logan Jr., North Central Unit

Recipients of *Physical Fitness Awards* were:

- 1st – Joshua Jackson, Ester Unit
- 2nd – Erick Poss, Grimes Unit
- 3rd – Damon Barnes, Varner Unit

IN-SERVICE DIVISION –

Classes held by the Training Academy during the month included a Certified Police Officer Annual Refresher course taught by Major Randy Shores on August 1 and 2 that was attended by 28 students. Fifteen students attended a Religious Services class on August 18 and 19. On August 22 and 23, the OC Instructor course, facilitated by Major Shores, was presented to 22 students.

eCADEMY –

During August, 322 ADC employees completed a total of 5,037.50 hours of eCADEMY training.

HEALTH/CORRECTIONAL PROGRAMS

CHAPLAINCY SERVICES

All Facilities – The Gathering was held on August 27, at Christ the King Catholic Church in Little Rock. The meeting was attended by all ADC staff chaplains, Deputy Director Aundrea Culclager, Superintendent DeAngelo Earl, Deputy Warden Linda Louis and 165 religious volunteers from around the state. Certified Religious Assistant (CRA) Robert Rankin of Varner/Varner Super Max was the recipient of the 2022 Bill Knight Faithful Service Award.

Maximum Security Unit – On August 25, Chaplain Tommy Bourgeois addressed the Hot Springs Charter of Gideons about prison ministries and gave a short devotional. Approximately 20 potential new volunteers were in attendance.

ACCREDITATION

ACA Internal Audits Completed:

- 08/04–08/07 ACA Conference held in New Orleans, with panel hearings for Pine Bluff Complex, Correctional Industries, Texarkana Work Release and Northwest Arkansas Work Release.
- 08/08–08/26 Wrightsville Complex and Benton Unit File Review
- 08/08 Tucker Unit Visit
- 08/17 Benton Unit Visit
- 08/26 Wrightsville Complex Visit

Fire/Safety and Sanitation Independent Audits Conducted by the Fire and Sanitation Coordinator:

- 08/02–08/03 Benton Unit Independent Audit
- 08/04–08/10 Wrightsville Complex Independent Audit
- 08/15–08/18 Tucker Unit Independent Audit

VOLUNTEER SERVICES

A detailed Volunteer Services report that includes all ADC facilities can be viewed on Page 21.

MENTAL HEALTH SERVICES

Reduction of Sexual Victimization Program (RSVP) and Sex Offender Treatment Programs (SOFT):

August 2022	Capacity	Beginning Count	Completed	Removed	Admissions	End Count
RSVP	238	234	0	4	5	235
SOFT	30	4	0	0	0	4
Total	268	238	0	4	5	239

There are 1,171 males on the waiting list for RSVP and six females on the waiting list for SOFT who are within five years of their TE date. Of those, 13 inmates are mandated by the Parole Board.

The average time on the waiting list from request is between one and two months for those stipulated.

*The total on the waiting list, including those not currently within the identified timeframe, is 1,551 males and eight females. Of these, 1,194 are eligible and 365 are ineligible for the program. There is one PREA inmate in the program at this time.

*Ineligibility is due to being in restrictive housing, having class IV status, or receiving a major disciplinary within the last 60 days.

Therapeutic Community (TC):

August 2022 Unit	Capacity	Beginning Count	Completed	Removed	Admissions	End Count
Tucker	62	59	3	3	3	56
Wrightsville	50	41	1	3	13	50
Total	112	100	4	6	16	106

There are 687 males and 181 females on the waiting list who are within ten years of their release date. Of those, 18 are mandated by the Parole Board.

The average time on the waiting list from request is 24 days.

*The total on the waiting list, including those not currently within the identified timeframe, is 877 males and 207 females. Of these, 868 are eligible and 216 are ineligible for the program.

*Ineligibility is due to being in restrictive housing, having class IV status, or receiving a major disciplinary within the last 60 days.

Substance Abuse Treatment Program (SATP):

August 2022 Unit	Capacity	Beginning Count	Completed	Removed	Admissions	End Count
Benton	20	20	3	2	3	18
Cummins	45	41	6	2	5	38
Maximum Security	4	4	0	0	0	4
Randall L. Williams	150	140	18	7	26	141
Wrightsville	100	86	15	5	16	82
Total	319	291	42	16	50	283

There are 2,296 males and 148 females on the waiting list who are within five years of their release date. Of those, 60 are mandated by the Parole Board.

The average time on the waiting list from request is 15 days.

*The total on the waiting list, including those not currently within the identified timeframe, is 2,979 males and 171 females. Of these, 2,444 are eligible and 706 are ineligible for the program.

*Ineligibility is due to being in restrictive housing, having class IV status, or receiving a major disciplinary within the last 60 days.

PILOT PROGRAM – Substance User Rehabilitation Services (SURS):

August 2022 Unit	Capacity	Beginning Count	Completed	Removed	Admissions	End Count
McPherson	150	115	16	7	39	131
Grimes	50	44	14	1	5	34
Total	200	159	30	8	44	165

Substance Use Intervention Program:

The Substance Use Intervention Program had seven admissions and 18 discharges for an end-of-month count of 17 in August. This program is housed at the Varner Unit and is for inmates found guilty of a disciplinary violation for drug use or drug possession.

Ouachita River Correctional Unit (ORCU) Residential Program Unit (RPU):

The RPU had nine admissions and seven discharges in August for an end-of-month count of 120.

McPherson Unit Mental Health Residential Program Unit (RPU):

There were two admissions and two discharges in August for an end-of-month count of 40.

Habilitation Program:

The Habilitation Program at the Ouachita River Correctional Unit provided treatment services to 46 inmates in August. There were two admissions and two discharges, which resulted in an end-of-month count of 44.

Anger Management Treatment:

The Anger Management Treatment Program at the Cummins Unit did not provide treatment services to any inmates in August. There were no admissions or discharges, for an end-of-month count of zero.

Suicide:

There were 106 suicidal threats in August. There were 27 attempts, two of which resulted in death.

MENTAL HEALTH SERVICES, *continued*

Staffing:

The following Mental Health Services and Substance Abuse Treatment Program (SATP) positions were vacant in July and August 2022:

Positions	FTEs*	July 2022	August 2022
Psychologists	13	7	6
Psychological Examiners	2	2	2
Social Workers	30	15	15
Licensed Professional Counselors	2	2	2
Rehab Director	1	1	1
Rehab Facility Supervisors	3	1	1
Advisors	64	22	22
Substance Abuse Program Coord.	6	2	2
Substance Abuse Program Leaders	40	11	11
Administrative Specialists	17	3	4
Rehab Program Managers	9	1	1

*FTE refers to authorized Full Time Equivalent positions.

ADDITIONAL MENTAL HEALTH AND MEDICAL INFORMATION

Self-Study Classes:

Classes	Number of Participants	Number Completed	Waiting List
Anger Management	168	163	836
Thinking Errors	233	196	754
Substance Abuse Education	183	177	533
Communication Skills	165	161	723
Domestic Violence	66	57	201
Victims of Domestic Violence	58	58	45
Stress Management	282	223	813
Parenting	102	97	308

Outpatient:

There were 2,126 inmates on the mental health medical log at the beginning of August. Mental Health staff conducted the following contacts during the month:

Case Management Contacts	1,923
Requests for Interviews	1,073
Testing	0
Intakes	466
Unit Requests	1,175
Pre-Lockup Reviews	345
Routine Restrictive Housing Reviews	876
Restrictive Housing Rounds	17,092
PREA Evaluations	39
Routine Follow-up	671
834 Requests	69

County Mental Health Requests:

During August, there were 350 requests received of a mental health nature. Of those, six inmates were fast-tracked to ADC. *Note: Most inmates were not transferred due to COVID-19.*

County Medical Health Requests:

During August, there were 750 requests received of a medical nature. A total of 12 inmates were fast-tracked to ADC.

Medical Contract Reimbursements:

Sanction reimbursements for ADC in July amounted to \$19,400.00.

Deaths:

There were five inmate deaths during the month of August. Two were claimed, two were cremated and one was unclaimed.

Wellpath:

See attachment for Wellpath's report regarding outside beds and emergency room visits.

Medical Grievances:

In August, there were 151 appeals of medical grievances received and 152 appeals were answered. Three were found to be with merit.

SEX OFFENDER ASSESSMENT

Assessments Completed:

Risk Level	August	September 1999 through August 2022
Level 1	0	1,223
Level 2	44	9,017
Level 3	26	7,627
Level 4	0	763
Default 3	1	737
Total	71	19,367

**Default Level 3's are included in the total number of Level 3's to date.*

ACIC Numbers:

The total number of sex offenders registered from September 1999 through August 2022:

Compliant	8,676
Delinquent	1,412
Confined	3,471
Out-of-State	4,122
Address Unknown	153
Deported	211
Incapacitated	112
Out of USA	26
Total	18,183

Consistent with current Arkansas law, deceased offenders no longer remain on the registry.

PAWS IN PRISON

August 2022 Unit	Enrolled	Graduated	Foster	Volunteer Hours
Hawkins Unit	5	3	0	0
Maximum Security Unit	9	3	0	0
McPherson Unit	7	0	0	0
North Central Unit	4	3	0	0
Ouachita River Correctional Unit	6	2	1	0
Randall L. Williams Unit	4	3	0	10
Tucker Unit	6	4	0	0
Total	41	18	1	10

Completed Paws in Prison Training:

August 2022 Program Graduates	18
YTD 2022 Program Graduates	155
Total Graduates Since Inception (December 2011)	2,025
Dogs Currently in Foster (Graduated, but Not Adopted)	1
August 2022 Volunteer Hours	10
YTD Volunteer Hours	84

INFORMATION TECHNOLOGY

INMATE TABLETS – Within the Division of Correction, a total of 10,492 inmate tablets were utilized during August. Of those, 6,518 were base tablets at no cost. A total of 3,972 tablets were leased at \$5 per month and include premium content.

INMATE VIDEO VISITS – Inmates completed 7,265 video visits during the month and missed 233 within the Division of Correction.

CONSTRUCTION/MAINTENANCE

PROJECT UPDATES

SEE CONSTRUCTION BUDGET / STATUS REPORT IN ATTACHMENTS SECTION (PAGES 24-25).

AGENCY HIGHLIGHTS

AUGUST 2022

PROMOTIONS

Some of the security promotions during the month of August included:

Cummins Unit

- Lt. Garren Dill

Grimes Unit

- Sgt. Blake Gill
- Sgt. Bryan Gray

Maximum Security Unit

- Lt. Jordan Slayden
- Lt. Regena Stewart

North Central Unit

- Sgt. Quincy Valls
- Sgt. Zachary Brandon

Ouachita River Correctional Unit

- Deputy Warden Tasha Griffin
- Sgt. Alford Powell

Pine Bluff Unit

- Lt. Keontis Walker

Randall L. Williams Unit

- Lt. Greg Newsom



Lt. Regena Stewart



Sgt. Alford Powell



Lt. Greg Newsom

PROMOTIONS, *continued*

Varner Unit

- Sgt. Jamarion Merrill
- Major Carl Lewis



Major Carl Lewis

Wrightsville Unit

- Lt. Dewayne Johnson

STAFF APPRECIATION

The following were recently awarded Employee of Month honors:

- Sgt. Mary Coleman, Tucker Unit
- Sgt. Cortney Fox, Randall L. Willimas Unit
- Alisha Fuller - Visitation Clerk, Cummins Unit



Sgt. Coleman



Sgt. Fox



Ms. Fuller

TUCKER UNIT MAJOR RECOGNIZED FOR OBTAINING CERTIFICATION

Deputy Director William Straughn visited the Tucker Unit in August to present Major Antonio Johnson with an award for earning his Lean Sigma Six Green Belt Certification.



BENTON UNIT EMPLOYEE SERVICE AWARDS HELD IN AUGUST

- Employee of the Year – Debbie Warford
- Supervisor of the Year – Work Release Sup. Richard Vinyard
- Correctional Officer of the Year – Cpl. Dusty Leslie
- Correctional Supervisor of the Year – Lt. Joe Ramsey

SOUTHEAST ARKANSAS COLLEGE ANNOUNCES PROGRAM FOR ADC EMPLOYEES

An announcement was made in August that Southeast Arkansas College will be offering college courses for Division of Correction employees. Associate of Arts degree, Associate of General Studies degree and Certificate of General Studies will be offered in person in the evening at the Varner and Cummins units. Courses will transfer to any public college in the state.

OFFICERS ESCORT CAUDELL DAUGHTER ON FIRST DAY OF SCHOOL

On August 22, officers from the Arkansas Department of Corrections, Benton Police Department, Bryant Police Department and Saline County Arkansas Sheriff's Office had the honor of standing in the gap and escorting EmmaRae Caudell, daughter of fallen ADC Officer Sgt. Joshua Caudell, into school on her first day.



THINK LEGACY PROGRAM 2022 GRADUATIONS HELD

On August 22, Think Legacy program graduations for 2022 were held at the Cummins, Delta Regional, East Arkansas Regional, McPherson, North Central and Ouachita River units. Due to a COVID lockdown, the graduation at the Tucker Unit was rescheduled for September 9, which will bring the total for the year to 100 Think Legacy graduates.



McPherson Unit



North Central Unit

OUACHITA RIVER STAFF TAKE PART IN COMMUNITY SERVICE PROJECT

On August 5, staff members from the Ouachita River Correctional Unit gave back to students in their community by participating in the "Back to School Block Party" at the Hot Spring County Courthouse.



PAWS IN PRISON PROGRAM FEATURED IN CENTRAL ARKANSAS PUBLICATION

The Arkansas Paws in Prison Program was featured in AY Magazine's annual August "DogDaze" issue.

REGIONAL MAINTENANCE PROJECT HIGHLIGHTS

AUGUST 2022

Washing of School Bus Fleet (White Hall)

Pine Bluff Regional Maintenance – August 3:



Cleanup Along Walco Road (Malvern)

Ouachita River Regional Maintenance – August 9:



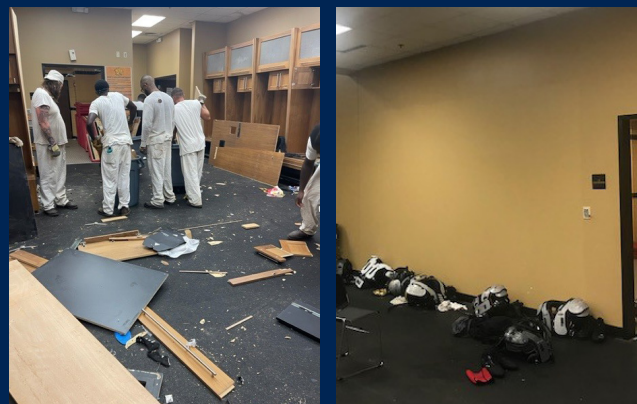
Cleanup of City Ditches (Dumas)

Varner Regional Maintenance 1 – August 9:



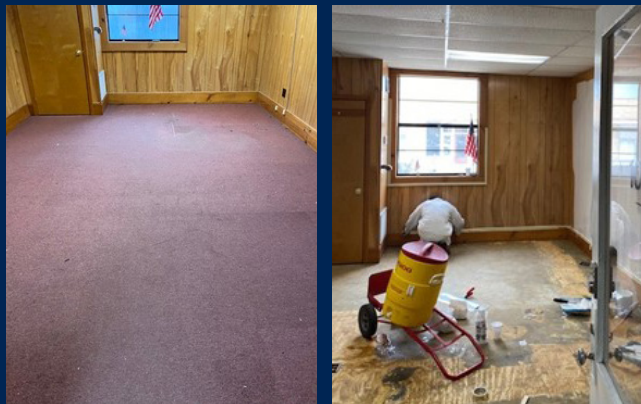
Removal of UAPB Football Lockers (Pine Bluff)

Pine Bluff Regional Maintenance – August 10 & 25:



City Hall Flooring Removal and Painting (Malvern)

Ouachita River Regional Maintenance – August 11 & 12:



Cleanup of Fencing (Gould)

Varner Regional Maintenance – August 16:



2022 INFORMAL GRIEVANCE REPORT

<i>Month</i>	BENTON	HAWK/M	HAWK/F	WRTS	EARU & MX	GRIMES	RLW	MCWR	MCPH	MSU	NCU	PBU	NWA	TU	TRCC	VSMX	VU	CU & CMU	ORCU	Ester	DRU	TOTAL
JAN	3	18	36	92	227	198	42	0	262	122	100	58	0	55	1	436	40	172	135	46	159	2,202
FEB	1	8	37	54	188	166	15	0	375	111	111	54	0	43	1	309	43	112	130	38	125	1,921
MAR	1	35	32	105	197	184	31	0	326	90	67	66	0	48	5	434	45	96	88	30	149	2,029
APR	0	15	25	72	207	176	18	0	285	95	86	46	0	68	0	487	33	143	139	25	98	2,018
MAY	0	7	17	40	209	187	39	0	283	75	91	34	0	41	1	343	31	87	138	34	83	1,740
JUN	0	10	24	65	244	246	46	0	300	54	87	76	0	49	0	317	35	129	94	40	116	1,932
JUL	0	1	36	69	197	235	20	2	217	54	66	48	0	63	0	258	23	142	97	35	119	1,682
AUG	0	9	15	60	146	272	25	0	264	82	59	56	0	48	1	345	38	164	148	45	126	1,903
SEPT	0	0	0	0	0	0	0	0	0	0	0	0	0	0	0	0	0	0	0	0	0	0
OCT	0	0	0	0	0	0	0	0	0	0	0	0	0	0	0	0	0	0	0	0	0	0
NOV	0	0	0	0	0	0	0	0	0	0	0	0	0	0	0	0	0	0	0	0	0	0
DEC	0	0	0	0	0	0	0	0	0	0	0	0	0	0	0	0	0	0	0	0	0	0
TOTAL	5	103	222	557	1,615	1,664	236	2	2,312	683	667	438	0	415	9	2,929	288	1,045	969	293	975	15,427

2022 FORMAL GRIEVANCE REPORT

<i>Month</i>	BENTON	HAWK/M	HAWK/F	WRTS	EARU & MX	GRIMES	RLW	MCWR	MCPH	MSU	NCU	PBU	NWA	TU	TRCC	VSMX	VU	CU & CMU	ORCU	Ester	DRU	TOTAL
JAN	2	4	14	42	310	103	33	0	115	136	61	29	0	49	0	193	12	134	83	23	87	1,430
FEB	0	1	13	32	244	98	11	0	126	132	58	54	0	27	1	177	25	90	66	22	75	1,252
MAR	0	11	10	35	208	122	31	0	139	135	40	33	0	46	1	204	19	66	75	12	68	1,255
APR	0	3	11	38	287	98	15	0	114	105	44	13	0	37	0	243	17	82	81	6	62	1,256
MAY	0	1	7	25	288	100	22	0	113	97	59	21	0	34	0	183	13	73	82	15	48	1,181
JUN	0	5	12	33	353	156	25	0	150	80	45	24	0	28	0	161	24	103	64	15	67	1,345
JUL	0	2	19	26	270	153	13	0	117	66	47	24	0	35	0	145	13	108	70	14	51	1,173
AUG	0	8	15	28	256	145	5	0	120	98	37	30	0	29	1	200	22	131	86	20	62	1,293
SEPT	0	0	0	0	0	0	0	0	0	0	0	0	0	0	0	0	0	0	0	0	0	0
OCT	0	0	0	0	0	0	0	0	0	0	0	0	0	0	0	0	0	0	0	0	0	0
NOV	0	0	0	0	0	0	0	0	0	0	0	0	0	0	0	0	0	0	0	0	0	0
DEC	0	0	0	0	0	0	0	0	0	0	0	0	0	0	0	0	0	0	0	0	0	0
TOTAL	2	35	101	259	2,216	975	155	0	994	849	391	228	0	285	3	1,506	145	787	607	127	520	10,185

INMATE INSTITUTIONAL GRIEVANCE APPEAL REPORT – AUGUST 2022

	Acknowledged	Rejected	Processed W/O Merit	Processed W/ Merit
Benton Unit	0	0	0	0
Benton Work Release	0	0	0	0
Cummins Unit	20	11	20	0
Cummins Modular Unit	0	0	0	0
Delta Regional Unit	18	3	28	0
East Arkansas Regional Unit	16	5	11	1
East Arkansas Regional Max Unit	107	16	117	1
Ester Unit	2	1	4	0
Grimes Unit	37	26	34	0
Maximum Security Unit	42	10	33	0
Tucker Re-Entry	0	0	0	0
McPherson Unit	22	13	21	0
McPherson Mental Health Residential Program Unit	0	0	0	0
Mississippi County Work Release Center	0	0	0	0
Northwest Arkansas Work Release Center	0	0	0	0
North Central Unit	18	3	25	0
Ouachita River Correctional Unit	18	4	17	0
ORCU Hospital	0	0	0	0
ORCU New Commitment	1	1	1	0
ORCU Mental Health Residential Program Unit	0	3	1	0
Pine Bluff Unit	5	0	7	0
Pine Bluff Re-Entry	0	0	0	0
Randall L. Williams Correctional Facility	9	2	9	0
Texarkana Regional Correctional Center	0	0	0	0
Tucker Unit	10	2	23	0
Varner Super Max	88	25	109	0
Varner Unit	4	3	3	0
Wrightsville Unit	14	3	10	0
Hawkins Center	8	0	10	0
Hawkins for Males	0	0	0	0
Hawkins SPU	0	0	0	0
Total	439	131	483	2

ADMISSIONS AND RELEASES – AUGUST 2022

<u>Admissions</u>	<u>Male</u>	<u>Female</u>	<u>Total</u>
Asian	0	0	0
Black	145	6	151
Hispanic	18	5	23
Native American Indian	2	2	4
Native Hawaiian or Pacific Isl.	0	0	0
White	302	58	360
Other	0	0	0
Unknown	0	0	0
Total	467	71	538

<u>Releases</u>	<u>Male</u>	<u>Female</u>	<u>Total</u>
Asian	0	0	0
Black	133	5	138
Hispanic	6	2	8
Native American Indian	3	2	5
Native Hawaiian or Pacific Isl.	0	0	0
White	198	76	274
Other	0	0	0
Unknown	0	0	0
Total	340	85	425

ADC INMATE POPULATION GROWTH 2000-2028 - AUGUST 2022

Updated 08/31/2022

Mo.	2000	2001	2002	2003	2004	2005	2006	2007	2008	2009	2010	2011	2012	2013	2014	2015	2016	2017	2018	2019	2020	2021	2022
Jan.	11,984	11,908	12,402	13,015	13,105	13,595	13,481	13,839	14,518	14,796	15,334	16,312	15,134	14,815	17,481	18,142	17,785	17,824	18,201	17,958	17,989	16,119	17,154
Feb.	12,169	12,022	12,529	13,054	13,166	13,783	13,633	14,012	14,603	14,883	15,374	16,209	14,990	15,008	17,438	18,082	17,625	17,608	17,998	17,846	18,181	16,120	17,077
March	12,006	12,033	12,299	13,108	13,088	13,418	13,534	13,772	14,580	14,843	15,290	16,095	14,964	14,665	17,395	18,233	17,573	17,666	18,089	17,898	17,860	16,085	16,992
April	12,069	12,167	12,465	13,213	13,323	13,469	13,554	13,851	14,769	14,937	15,570	16,172	15,124	14,850	17,604	18,703	17,815	17,798	18,227	17,977	17,331	16,250	17,059
May	12,109	12,384	12,558	13,463	13,556	13,528	13,711	14,146	14,880	15,146	15,694	16,062	15,132	15,074	17,593	18,693	17,769	17,652	17,945	17,817	16,694	16,476	17,229
June	12,005	12,108	12,439	13,418	13,389	13,251	13,430	13,915	14,700	15,025	15,564	15,554	14,832	14,825	17,340	18,813	17,973	17,963	17,972	17,942	16,552	16,560	17,129
July	12,030	12,190	12,622	13,509	13,528	13,286	13,560	14,082	14,868	15,195	15,807	15,519	14,879	15,379	17,522	18,870	18,130	18,180	18,005	18,002	16,511	16,638	17,109
August	12,087	12,371	12,815	13,565	13,632	13,419	13,646	14,224	15,100	15,385	15,829	15,240	14,675	16,103	17,549	18,806	17,919	18,051	17,751	18,090	16,367	16,655	17,274
September	11,983	12,289	12,774	13,341	13,516	13,237	13,652	14,217	14,850	15,285	16,025	15,172	14,724	16,412	17,605	18,549	18,026	18,179	17,865	17,856	16,215	16,698	
October	12,119	12,348	12,942	13,341	13,584	13,363	13,775	14,349	14,836	15,381	16,311	15,271	14,856	16,993	17,880	18,430	18,127	18,348	17,943	17,947	16,311	16,821	
November	12,094	12,408	13,162	13,408	13,706	13,587	13,913	14,437	15,025	15,340	16,460	15,205	14,625	17,168	17,848	17,981	17,573	17,973	17,666	18,060	16,165	16,982	
December	11,856	12,333	12,845	13,106	13,470	13,338	13,728	14,315	14,716	15,199	16,204	15,062	14,654	17,235	17,874	17,707	17,537	18,078	17,799	17,759	16,094	17,023	
Net Ann. Inc.	29	477	512	261	364	-132	390	587	401	483	1,005	-1,142	-408	2,581	639	-167	-170	541	-279	-40	-1,665	929	251
Avg. Mo. Inc.	2	40	43	22	30	-11	33	49	33	40	84	-95	-34	215	53	-14	-14	45	-23	-3	-139	77	31

Population is total jurisdictional count at end of each month. Population at end of month December 1999 was 11,827.

Average monthly population increased for past fifteen years 2007 - 2021 is 18

Average monthly population increased for past ten years Jan. 2012 - Dec 2021 is 16

Average monthly population decreased for past five years 2017 - 2021 is -9

Projected at Growth of 18 per Month

Mo.	2008	2009	2010	2011	2012	2013	2014	2015	2016	2017	2018	2019	2020	2021	2022	2023	2024	2025	2026	2027	2028
	Actual	Actual	Actual	Actual	Actual	Actual	Actual	Actual	Actual	Actual	Actual	Actual	Actual	Actual	Actual/Proj	Proj.	Proj.	Proj.	Proj.	Proj.	Proj.
January	14,518	14,796	15,334	16,312	15,134	14,815	17,481	18,142	17,785	17,824	18,201	17,958	17,989	16,119	17,154	17,364	17,580	17,796	18,012	18,228	18,444
February	14,603	14,883	15,374	16,209	14,990	15,008	17,438	18,082	17,625	17,608	17,998	17,846	18,181	16,120	17,077	17,382	17,598	17,814	18,030	18,246	18,462
March	14,580	14,843	15,290	16,095	14,964	14,665	17,395	18,233	17,573	17,666	18,089	17,898	17,860	16,085	16,992	17,400	17,616	17,832	18,048	18,264	18,480
April	14,769	14,937	15,570	16,172	15,124	14,850	17,604	18,703	17,815	17,798	18,227	17,977	17,331	16,250	17,059	17,418	17,634	17,850	18,066	18,282	18,498
May	14,880	15,146	15,694	16,062	15,132	15,074	17,593	18,693	17,769	17,652	17,945	17,817	16,694	16,476	17,229	17,436	17,652	17,868	18,084	18,300	18,516
June	14,700	15,025	15,564	15,554	14,832	14,825	17,340	18,813	17,973	17,963	17,972	17,942	16,552	16,560	17,129	17,454	17,670	17,886	18,102	18,318	18,534
July	14,868	15,195	15,807	15,519	14,879	15,379	17,522	18,870	18,130	18,180	18,005	18,002	16,511	16,638	17,109	17,472	17,688	17,904	18,120	18,336	18,552
August	15,100	15,385	15,829	15,240	14,675	16,103	17,549	18,806	17,919	18,051	17,751	18,090	16,367	16,655	17,274	17,490	17,706	17,922	18,138	18,354	18,570
September	14,850	15,285	16,025	15,172	14,724	16,412	17,605	18,549	18,026	18,179	17,865	17,856	16,215	16,698	17,292	17,508	17,724	17,940	18,156	18,372	18,588
October	14,836	15,381	16,311	15,271	14,856	16,993	17,880	18,430	18,127	18,348	17,943	17,947	16,311	16,821	17,310	17,526	17,742	17,958	18,174	18,390	18,606
November	15,025	15,340	16,460	15,205	14,625	17,168	17,848	17,981	17,573	17,973	17,666	18,060	16,165	16,982	17,328	17,544	17,760	17,976	18,192	18,408	18,624
December	14,716	15,199	16,204	15,062	14,654	17,235	17,874	17,707	17,537	18,078	17,799	17,759	16,094	17,023	17,346	17,562	17,778	17,994	18,210	18,426	18,642
Net Ann. Inc.	401	483	1,005	-1,142	-408	2,581	639	-167	-170	541	-279	-40	-1,665	929	323	216	216	216	216	216	216
Ave. Mo. Inc.	33	40	84	-95	-34	215	53	-14	-14	45	-23	-3	-139	77	27	18	18	18	18	18	18

MONTHLY POPULATION AVERAGES - AUGUST 2022

Unit/Center	8/1	8/2	8/3	8/4	8/5	8/8	8/9	8/10	8/11	8/12	8/15	8/16	8/17	8/18	8/19	8/22	8/23	8/24	8/25	8/26	8/29	8/30	8/31	AVG
Benton	318	319	318	315	312	313	318	312	326	328	330	330	334	333	337	343	345	348	353	352	351	349	346	332
Cummins	1,981	1,975	1,967	1,969	1,979	1,975	1,971	1,975	1,968	1,978	1,977	1,976	1,973	1,971	1,979	1,977	1,975	1,972	1,972	1,984	1,981	1,979	1,976	1,975
Delta	612	611	607	600	607	607	616	611	608	609	607	607	612	611	607	607	617	616	616	615	614	614	613	611
East AR Reg	1,561	1,561	1,561	1,551	1,549	1,561	1,560	1,557	1,558	1,569	1,568	1,567	1,562	1,554	1,565	1,561	1,559	1,563	1,559	1,570	1,569	1,567	1,567	1,562
Ester	564	559	558	562	561	557	564	562	556	567	566	565	567	563	558	550	556	556	558	555	559	565	567	561
Grimes	1,075	1,073	1,073	1,071	1,069	1,069	1,075	1,075	1,073	1,073	1,072	1,072	1,069	1,067	1,068	1,069	1,069	1,069	1,076	1,075	1,075	1,076	1,074	1,072
Max Sec	558	558	558	556	556	556	554	554	553	553	553	553	553	553	553	556	556	557	557	556	557	557	557	555
McPherson	933	920	917	921	922	920	913	912	908	910	906	912	904	910	910	909	910	908	908	901	899	907	912	912
MCWRC	155	155	155	152	152	152	152	152	152	152	152	152	152	153	153	155	155	151	151	150	150	150	149	152
N Central	829	824	821	818	811	811	833	832	831	831	825	825	825	833	832	832	832	833	834	831	830	828	839	828
NWAWRC	100	100	100	100	100	100	99	100	100	100	100	100	100	100	100	100	100	100	99	100	100	100	100	100
Ouachita River	1,758	1,774	1,756	1,795	1,755	1,771	1,770	1,801	1,797	1,759	1,746	1,740	1,771	1,737	1,759	1,740	1,756	1,755	1,738	1,746	1,772	1,787	1,772	1,763
Randall L Williams	528	530	537	531	533	541	534	534	534	524	530	526	520	524	524	532	531	529	532	537	536	531	535	531
Pine Bluff	520	528	528	527	532	532	532	531	526	526	526	524	527	533	532	529	527	521	523	528	533	533	531	528
PB Reentry	53	53	53	54	54	54	54	54	54	54	54	54	54	54	54	54	53	54	54	53	50	48	48	53
TRCC	118	117	117	117	117	117	117	116	116	116	116	116	116	116	117	120	120	123	123	124	126	126	126	119
Tucker	625	624	624	622	621	617	618	614	613	618	621	619	618	618	614	619	619	616	616	616	614	615	613	618
Varner	1,616	1,627	1,627	1,626	1,626	1,624	1,623	1,633	1,632	1,628	1,626	1,625	1,620	1,627	1,618	1,614	1,624	1,623	1,620	1,618	1,627	1,627	1,625	1,624
Wrightsville	833	837	841	850	850	850	849	847	846	845	845	848	851	854	854	854	856	848	848	848	844	845	842	847
WR Hawkins-Females	255	255	255	255	256	255	255	254	254	253	251	250	255	255	255	255	253	253	253	253	252	252	252	254
WR Hawkins-Males	192	192	192	192	192	190	189	195	196	196	197	199	200	200	200	199	199	199	199	199	197	196	196	196
Total ADC	15,184	15,192	15,165	15,184	15,154	15,172	15,196	15,221	15,201	15,189	15,168	15,160	15,183	15,166	15,189	15,175	15,212	15,194	15,189	15,211	15,236	15,252	15,240	15,193
ALETA	17	17	17	17	17	17	17	17	17	17	17	17	17	17	17	17	17	17	17	17	17	17	17	17
Ar State Police	52	52	52	53	53	53	55	54	54	54	54	53	53	53	53	52	52	51	50	50	52	52	52	53
Co Jail / M	1,445	1,408	1,433	1,436	1,472	1,449	1,440	1,432	1,467	1,487	1,501	1,521	1,516	1,548	1,515	1,543	1,524	1,556	1,577	1,554	1,529	1,536	1,542	1,497
Co Jail / F	106	99	105	102	101	107	110	116	120	117	119	117	120	117	121	126	127	131	133	136	142	119	110	117
Total Co Jail BK	1,551	1,507	1,538	1,538	1,573	1,556	1,550	1,548	1,587	1,604	1,620	1,638	1,636	1,665	1,636	1,669	1,651	1,687	1,710	1,690	1,671	1,655	1,652	1,614
309/M	205	205	204	205	205	205	206	206	206	206	203	203	201	201	200	200	199	199	201	199	199	199	198	202
309/F	87	88	88	88	88	89	89	89	90	90	90	89	89	89	85	85	86	88	88	88	91	91	90	88
Total Act 309	292	293	292	293	293	294	295	295	296	296	293	292	290	290	285	285	285	287	289	287	290	290	288	290
Total Non ADC	1,912	1,869	1,899	1,901	1,936	1,920	1,917	1,914	1,954	1,971	1,984	2,000	1,996	2,025	1,991	2,023	2,005	2,042	2,066	2,044	2,030	2,014	2,009	1,974
Total	17,096	17,061	17,064	17,085	17,090	17,092	17,113	17,135	17,155	17,160	17,152	17,160	17,179	17,191	17,180	17,198	17,217	17,236	17,255	17,255	17,266	17,266	17,249	17,167

FISCAL YEAR 2023 COUNTY JAIL BACKUP - AUGUST 2022

DAY		Jul-22		Aug-22
1		1,515		1,551
2	*	1,515		1,507
3	*	1,515		1,538
4		1,528		1,538
5		1,528		1,573
6		1,527	*	1,573
7		1,554	*	1,573
8		1,551		1,556
9	*	1,551		1,550
10	*	1,551		1,548
11		1,528		1,587
12		1,538		1,604
13		1,522	*	1,604
14		1,534	*	1,604
15		1,533		1,620
16	*	1,533		1,638
17	*	1,533		1,636
18		1,510		1,665
19		1,525		1,636
20		1,539	*	1,636
21		1,541	*	1,636
22		1,587		1,669
23	*	1,587		1,651
24	*	1,587		1,687
25		1,574		1,710
26		1,590		1,690
27		1,566	*	1,690
28		1,540	*	1,690
29		1,525		1,671
30	*	1,525		1,655
31	*	1,525		1,652
Avg Daily Backup		1,541		1,617

Notes: Totals do not include 309 Contracts in County Jails (maximum of 336)

County Jail Back-up Average for August 2022 - 1,617

County Jail Back-up Fiscal Year Average as of August 31, 2022 - 1,579

Short-Term Revocation Program Average for August 2022 - 595

STTG UNIT COUNTS – SEPTEMBER 2022

Unit	Beginning Total	Confirmed	Suspected	In	Out	Paroled	Removed	Ending Total	Total Unit Population	Unit % of STTG's
Benton	100	0	0	23	8	5	0	110	347	31.70%
Cummins	675	2	0	64	52	0	0	689	1,976	34.87%
Delta	214	0	0	23	10	0	0	227	614	36.97%
EARU	657	0	0	29	23	6	0	657	1,567	41.93%
Ester	128	0	0	20	12	15	1	120	567	21.16%
Grimes	363	0	0	17	7	11	0	362	1,074	33.71%
Hawkins	48	0	0	0	2	0	0	46	448	10.27%
Max	285	0	0	9	9	8	0	277	561	49.38%
Mcperson	45	0	0	0	0	0	0	45	917	4.91%
MCWR	52	0	0	3	2	1	0	52	150	34.67%
NCU	252	3	0	46	30	13	0	258	838	30.79%
NWAWR	29	0	0	2	1	0	0	30	100	30.00%
ORCU	359	0	0	127	108	7	0	371	1,569	23.65%
ORCU Intake	87	116	0	0	123	0	0	80	241	33.20%
Pine Bluff	184	0	0	17	22	3	0	176	574	30.66%
RLW	209	0	0	52	41	11	0	209	535	39.07%
TWR	41	0	0	19	19	0	0	41	126	32.54%
Tucker	218	0	0	10	14	3	0	211	609	34.65%
Varner	668	0	0	65	57	0	0	676	1,626	41.57%
Wrightsville	297	0	0	42	30	16	1	292	840	34.76%
Total	4,911	121	0	568	570	99	2	4,929	15,279	32.26%

ORCU Intake brought in 116 new STTG members into ADC last month.

STTG DISCIPLINARY REPORT – SEPTEMBER 2022

Unit	STTG Incidents	STTG Suspected Incidents	Total Unit Disciplinary	Disciplinary Involving STTG	Percentage
Benton	0	0	20	6	30.00%
Cummins	0	0	656	361	55.03%
Delta	0	0	129	75	58.14%
EARU	0	0	186	106	56.99%
Easter	0	0	49	20	40.82%
Grimes	0	0	196	96	48.98%
Hawkins	0	0	1	0	0.00%
Max	0	0	94	43	45.74%
Mcperson	0	0	83	9	10.84%
MCWR	0	0	7	2	28.57%
NCU	0	0	125	75	60.00%
NWAWR	0	0	2	0	0.00%
ORCU	0	0	123	54	43.90%
ORCU Intake	0	0	9	2	22.22%
Pine Bluff	0	0	50	30	60.00%
RLW	0	0	88	52	59.09%
TWR	0	0	11	3	27.27%
Tucker	0	0	52	19	36.54%
Varner	0	0	344	191	55.52%
Wrightsville	0	0	157	78	49.68%
Total	0	0	2,382	1,222	51.30%

STTG COUNTS BY STTG SET – SEPTEMBER 2022

STTG Set	Benton	Cummins	Delta	EARU	Ester	Grimes	Hawkins	Max	Mcpherson	MCWR	NCU	NWAWR	ORCU	Intake	PB	RLW	TWR	Tucker	Varner	Wrightsville	Total
Asian	1	1	1	2	0	0	0	0	0	0	1	0	0	0	0	0	0	1	1	0	8
Bloods	21	151	32	121	16	70	6	60	3	9	40	9	62	13	31	36	9	32	148	57	926
Crips	10	77	21	79	13	37	5	39	7	9	12	4	45	8	21	13	2	16	97	37	552
Folk	2	65	0	45	4	27	12	37	6	3	15	0	100	12	10	10	0	14	65	21	448
GD	21	155	48	175	24	87	2	62	0	15	45	6	20	6	45	49	13	65	142	57	1,037
Mexican	5	22	9	16	3	11	3	8	5	2	6	1	8	1	6	10	0	5	22	13	156
Motorcycle	0	3	1	2	0	1	0	1	1	0	2	1	1	0	1	0	0	1	1	3	19
Other	4	17	9	21	12	11	3	4	3	1	15	0	13	2	8	9	2	7	19	8	168
People	1	26	5	22	2	21	1	19	3	0	11	1	9	0	8	4	1	9	24	14	181
Unknown	2	17	14	14	0	2	0	3	0	0	3	0	0	0	0	5	2	4	4	7	77
W/S	23	67	59	56	27	40	6	6	17	7	49	6	90	25	33	38	6	24	69	33	681
AB	0	11	1	5	1	5	0	1	0	1	4	0	2	1	0	2	0	3	11	4	52
AC	0	8	5	13	2	6	0	5	0	0	6	1	2	1	3	1	2	2	13	5	75
NAE	7	37	9	43	10	16	2	13	0	1	17	1	10	6	1	14	2	10	27	14	240
WAR	13	32	13	43	6	28	6	19	0	4	32	0	9	5	9	18	2	18	33	19	309
Total	110	689	227	657	120	362	46	277	45	52	258	30	371	80	176	209	41	211	676	292	4,929

Key:

GD = Gangster Disciples

W/S = White Supremacist

NAE = New Aryan Empire

WAR = White Aryan Resistance

AC = Aryan Circle

AB = Aryan Brotherhood

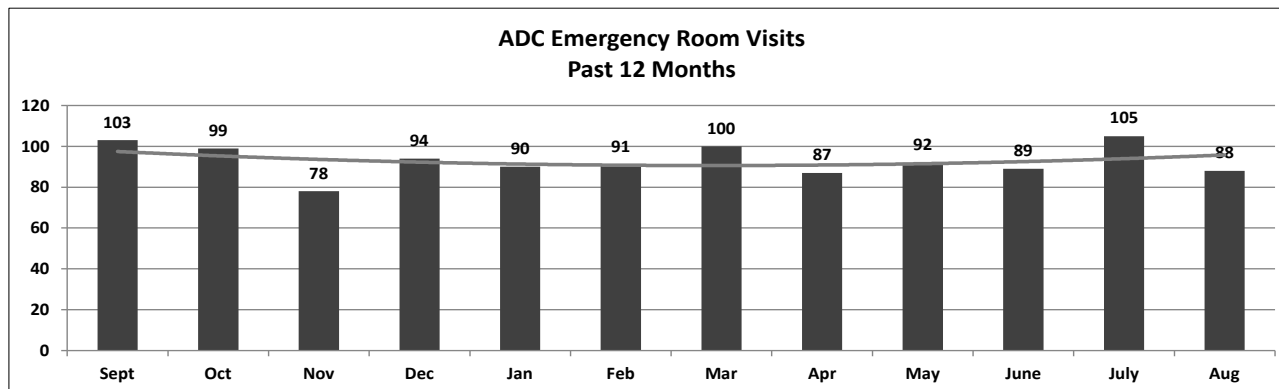
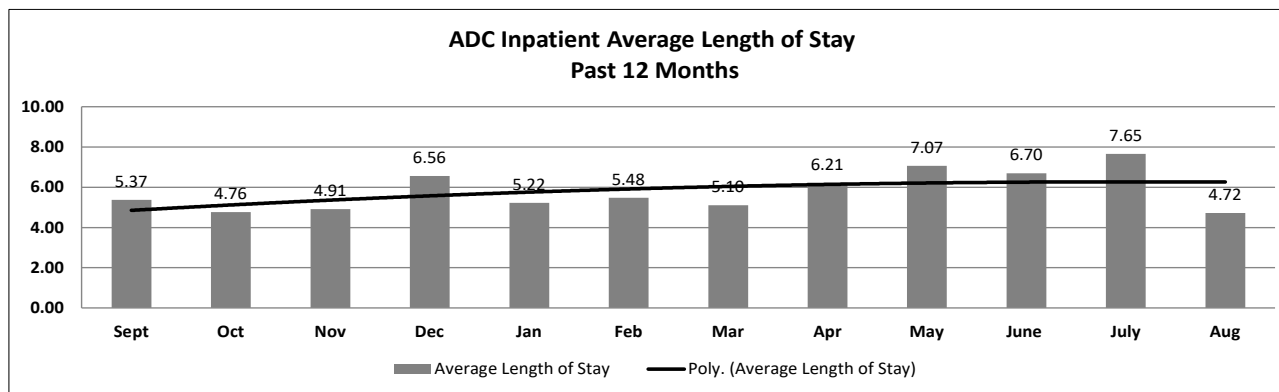
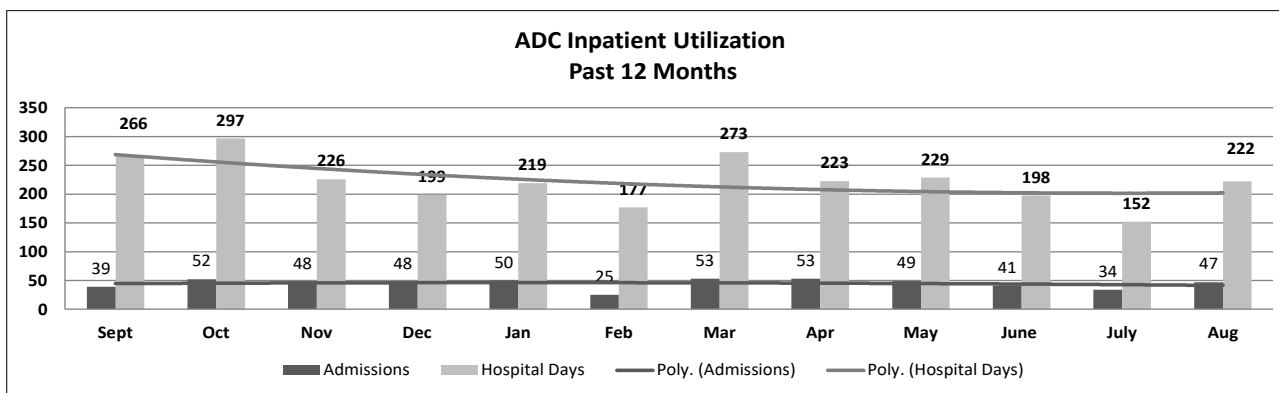
ADC INPATIENT AND EMERGENCY ROOM UTILIZATION

ADC Inpatient Statistics Past 12 Months

	2021				2022								Average
	Sept	Oct	Nov	Dec	Jan	Feb	Mar	Apr	May	June	July	Aug	
Admissions	39	52	48	48	50	25	53	53	49	41	34	47	44.9
Hospital Days	266	297	226	199	219	177	273	223	229	198	152	222	223.4
Average Length of Stay	5.37	4.76	4.91	6.56	5.22	5.48	5.10	6.21	7.07	6.70	7.65	4.72	4.97

ADC ER Visits Past 12 Months

	2021				2022								Average
	Sept	Oct	Nov	Dec	Jan	Feb	Mar	Apr	May	June	July	Aug	
Emergency Room Visits	103	99	78	94	90	91	100	87	92	89	105	88	93.0



CONFIDENTIAL: This report is prepared for quality assurance or peer review purposes, is absolutely privileged, and will not be discoverable or admissible in any legal proceeding, pursuant to ACA§16-46-105, ACA§20-9-501, and ACA§20-9-503.

MEDICAL GRIEVANCE BOARD REPORT – AUGUST 2022

Unit	Acknowledged/ Received	Rejected	Reviewed & Signed by Dep Director	With Merit	With Merit, but Resolved	% With Merit	Without Merit
Benton	0	0	0	0	0	0%	0
CMU	0	0	0	0	0	0%	0
Cummins	23	4	21	0	0	0%	21
Delta	3	2	2	0	0	0%	2
EARU	21	0	20	1	0	5%	19
EARU Max	34	0	36	1	0	3%	35
Ester	0	0	1	0	0	0%	1
Grimes	9	7	9	1	0	11%	8
Hawkins	0	1	0	0	0	0%	0
McPherson	6	1	25	0	0	0%	25
MCWRC	0	0	0	0	0	0%	0
MSU	5	0	4	0	0	0%	4
North Central	1	0	1	0	0	0%	1
NWAWRC	0	0	0	0	0	0%	0
Ouachita	7	1	11	0	0	0%	11
Pine Bluff	12	1	1	0	0	0%	1
Randall L. Williams	0	0	3	0	0	0%	3
SNN	0	0	0	0	0	0%	0
TRCC	0	0	0	0	0	0%	0
Tucker	7	1	4	0	0	0%	4
Varner	5	4	2	0	0	0%	2
Varner Super Max	18	3	12	0	0	0%	12
WRU	0	1	0	0	0	0%	0
WHM	0	0	0	0	0	0%	0
WWR	0	0	0	0	0	0%	0
Total	151	26	152	3	0	2%	149

VOLUNTEER SERVICES

Month: August Year: 2022	BENTON UNIT	CUMMINS	DELTA REGIONAL	EAST ARKANSAS	EAST ARK. MAX	ESTER	GRIMES	HAWKINS	MCPHERSON	MCWR	NWAWRC	NORTH CENTRAL	OUACHITA	PINE BLUFF	RLW	TRCC	TUCKER	TUCKER MAX	VARNER	VARNER MAX	WRIGHTSVILLE	TOTAL
CHAPLAINCY HOURS																						
VOLUNTEERS IN CHARGE	7	12	3	16	0	8	1	15	1	4	1	14	12	6	14	0	32	16	0	0	11	173
VOLUNTEER VISITS	48	36	17	55	8	25	33	40	53	8	9	29	229	6	31	0	103	114	24	3	19	890
RELIGIOUS VOLUNTEER HOURS	12	23	28	134	17	0	157	90	312	8	17	672	253	78	31	0	221	171	156	7	77	2,464
SPECIAL EVENTS	0	0	0	0	0	0	0	0	0	0	0	0	0	0	0	0	0	1	0	0	0	1
																					TOTAL	3,528
PALS PROGRAM																						
Volunteer Hours	0	7	1	7	0	6	7	12	34	0	0	59	2	0	0	0	0	6	2	0	5	148
THINK LEGACY																						
Volunteer Hours	0	0	6	18	0	0	0	0	13	0	0	15	7	0	0	0	4	0	0	0	0	63
WAGE																						
Volunteer Hours	0	0	6	0	0	12	0	51	0	0	0	0	68	0	0	0	96	0	0	0	0	233
OTHER																						
Program Name	Total # of Hours Volunteered																					
Paws in Prison	10																					
Inside Out Program	0																					
Veterans Program	0																					
Release Program	0																					
Behavioral Program	1																					
Dance 2B Free	4																					
Lactation Program	0																					
Yoga	18																					
TOTAL	33																					

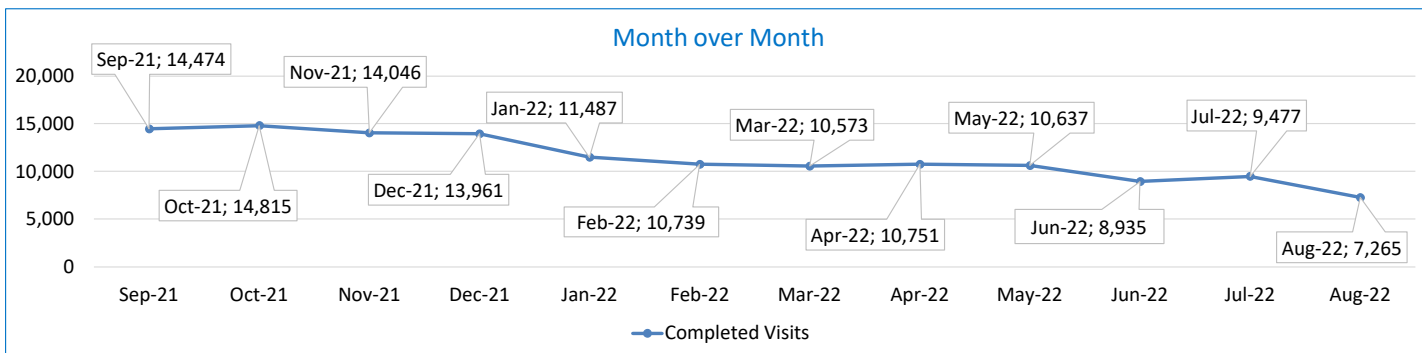
SECURUS VIDEO VISITATION REPORT AUGUST 2022

AR-DOC SVV Activity Tracker

Total ADP 15,352

Total Visits by Month	Sep-21	Oct-21	Nov-21	Dec-21	Jan-22	Feb-22	Mar-22	Apr-22	May-22	Jun-22	Jul-22	Aug-22
Total (Includes SuperMax)	14,474	14,815	14,046	13,961	11,487	10,739	10,573	10,751	10,637	8,935	9,477	7,265
Target Objective	15,587	15,587	15,587	15,587	15,587	15,587	15,587	15,587	15,587	15,587	15,587	15,587

Anywhere Visitation Performance:



Completed Visits

Site	Current Month	Previous Month
Benton	108	160
Cummins	615	807
Delta Regional	266	294
East Arkansas Regional	808	1,123
Ester	317	375
Grimes	569	743
J Aaron Hawkins Sr.	365	444
Tucker Max	271	484
Mcperson	393	517
Mississippi County WRC	72	132
North Central	710	906
NW Arkansas WRC	76	100
Ouachita River	671	846
Pine Bluff Complex	297	364
Randall L Williams	126	158
State Police Barracks	78	98
Texarkana Regional	43	64
Tucker Unit	156	190
Varner	843	1,048
Wrightsville Unit	463	598
Pine Bluff Re-Entry	18	26
Tucker Re-entry	0	0
Total:	7,265	9,477

Missed by Inmate

Site	Current Month	Previous Month
Benton	6	5
Cummins	23	25
Delta Regional	11	7
East Arkansas Regional	14	25
Ester	4	13
Grimes	7	7
J Aaron Hawkins Sr.	22	30
Tucker Max	21	17
Mcperson	21	21
Mississippi County WRC	12	8
North Central	7	11
NW Arkansas WRC	3	3
Ouachita River	26	16
Pine Bluff Complex	5	7
Randall L Williams	5	13
State Police Barracks	1	5
Texarkana Regional	1	1
Tucker Unit	7	6
Varner	21	32
Wrightsville Unit	15	12
Pine Bluff Re-Entry	1	1
Tucker Re-entry	0	0
Total:	233	265

**SECURUS TABLET REPORT
AUGUST 2022**

Facility Name	Personal Tablets (All)	\$0	\$5	Community / Inventory	Officer	Total	New Subscriptions
Benton Unit	333	103	230	95	8	436	4
Cummins Unit	1,350	931	418	774	14	2,138	80
Delta Regional Unit	445	273	172	143	16	604	82
East Arkansas Regional Unit	876	578	298	613	10	1,499	91
Ester Unit	508	333	175	249	20	777	43
Grimes Unit	740	485	255	357	14	1,111	47
J. Aaron Hawkins Sr. Center For Women	419	262	157	160	19	598	6
McPherson Unit	674	410	264	463	17	1,154	79
Mississippi County Work Release Center	153	48	105	68	9	230	2
North Central Unit	599	353	246	106	10	715	64
Northwest Arkansas Work Release Center	100	39	61	22	8	130	0
Ouachita River Correctional Unit	937	587	350	1,130	14	2,081	112
Pine Bluff Reentry Center	54	14	40	26	0	80	0
Pine Bluff Unit	440	265	175	153	9	602	34
Randall L. Williams Facility	367	233	134	107	15	489	52
State Police Barracks	53	41	12	10	3	66	0
Texarkana Regional Correctional Center	115	34	81	48	10	173	2
Tucker Maximum Security Unit	261	164	96	333	14	608	17
Tucker Reentry Center	0	0	0	45	2	47	0
Tucker Unit	486	338	148	244	10	740	17
Varner Unit	913	601	312	712	21	1,646	69
Wrightsville Unit	669	426	243	354	9	1,032	35
TOTAL	10,492	6,518	3,972	6,212	252	16,956	836

CONSTRUCTION BUDGET / STATUS REPORT - SEPTEMBER 7, 2022 — [Page 1 of 2]

Fund	Project Description	Approved Budget	Actual Budget Spent	Available Budget	\$ % Complete	Construction % Complete	Notes
700483A	EARU Max Rec Expanded Metal Rec Yard	879,000	822,456	56,544	94%	65%	Construction of the Rec Pens at EARU began on 1/03/2022. We are making great progress with this project. The funds spent on this project is reflective of the engineering fees, material and construction of the panels. 24 pens are complete.
700483A	Tucker Max Expanded Metal Rec Yard	1,800,000	1,139,825	660,175	63%	25%	DBA Approved to proceed. We are constructing the panels on-site. Material list has been ordered and delivered. The funds spent on this project is reflective of engineering fees and the material needed to construct the rec pen panels.
700483A	Cummins Expanded Metal Rec Yard	368,617	50,012	318,605	14%	10%	Plans on hold, will modify for exp. Metal. Funds spent on this project is reflective of engineering fees spent against this portion of the overall project.
KBR4Q95	Bullpens	851,999	388,676	463,323	46%	45%	Varner & EARU complete. Installation underway at Max. Locks delivered. Working on bullpens now.
KBR4Q95	13 & 15 Barracks Door Revisions	174,000	136,711	37,289	79%	68%	All doors and locks installed in 13 Barracks. 15 barracks has been remeasured for quality assurance and we are fabricating the revisions at this time at Central Maintenance.
7004828	Entegrity Energy Improvements Phase 2 at Tucker and Max	18,603,150	14,574,233	4,028,917	78%	75%	Lighting, plumbing and water are complete at the Max and Tucker Unit. HVAC has began at the Max and Tucker Unit and is expected to for the next several months, depending on weather.
KBSHW18	Tucker Water Treatment	1,093,848	116,411	977,437	11%	0%	The original blueprints has been completed and approved. The detail drawings are complete. Submittals has been presented to DBA for final approval. Awaiting notice to proceed. The funds spent on this project is reflective of engineering and design fees.
KBSFW18	Max Armory	100,000	67,089	32,911	67%	35%	We have our notice to proceed from DBA. Work has started on this project. Plumbing line and foundation work complete. Slab poured and the block walls are 50% complete. Funds spent on this project is reflective of material pre-purchased prior to the start of construction.
KBR4Q95			0				
7004810	Administrative East Roof Replacement	1,802,000	291,313	1,510,687	16%	35%	The funds spent is reflective of engineering fees. RLW modified roof is expected to complete on 9/11/22 weather permitting. Once that phase is complete they will move to the upper section to begin the TPO roof. Admin East is 35% complete with new TPO roof.
7004810	Central Warehouse Roof Replacement	424,000	27,372	396,628	6%	0%	
7004810	RLW Roof Replacement	3,074,000	233,712	2,840,288	8%	7%	
865C	NCU Perimeter Security	600,000	20,625	542,766	10%	0%	We have received the notice to proceed from DBA. The pre-con meeting was made on June 22nd to assess mobilization and start date for the project. In person sites visits are complete. The ETA on this project is September 19, 2022. The funds spent is reflective of on-call design fees.
7004820			30,334				
KBR4Q95			6,275				
N98	Max Re-Entry Generator Project	135,000	16,635	118,365	12%	7%	Plans submitted to DBA. We have received our notice to proceed on this project. Funds spent are reflective of engineering fees and site work at location.
KBR4Q95	Wrightsville Standby Generator Project	202,000	20,081	168,899	16%	10%	DBA Approved. Generator is purchased. ETA has been pushed to September 22, 2022. Funds spent on this project is on-call design fees and material needed once generator is received.
		13,020					
7004820	Tucker 10 Barracks Sidewalk	70,259	32,679	37,580	47%	80%	Sidewalk is complete. This project has several additional elements added that will better secure movement through the compound. The difference in funds spent and construction complete is due to use of on-site material identified after the budget was approved.
7004820	Lethal Fence Control for Cummins, Varner SuperMax, Tucker Max, & EARU	1,090,000	64,207	1,025,793	6%	0%	Project has cleared DBA. The project has been awarded to Tri-State. Notice to proceed has been issued. Pre-con meeting was held on August 4, 2022. ETA on start of this project November 14, 2022. Material and part delays has driven the delay on project. Funds spent on this project is reflective of on-call design fees.



CONSTRUCTION BUDGET / STATUS REPORT - SEPTEMBER 7, 2022 — [Page 2 of 2]

Fund	Project Description	Approved Budget	Actual Budget Spent	Available Budget	\$ % Complete	Construction % Complete	Notes
Telephone Projects							
Maintenance & Operations	Fire Alarm Upgrades (All Units)	41,000	4,448	36,552	11%	10%	on-going
	Stainless Steel - Kitchen/Shower/Restrooms - All Units	20,000	0	20,000	0%	0%	continual need
	Gates and Fences all units	25,000	4,603	20,397	18%	18%	to improve security
	ACA Maintenance	100,000	7,625	92,375	8%	8%	Working with Wrightsville, Benton and Tucker with FY23 ACA.
	ADA Projects - All Units	10,000	0	10,000	0%	0%	Working with Varner for the sports field sidewalk.
	Fast Top Floor Systems (kitchen/laundry/showers all units)	25,000	0	25,000	0%	0%	Benton complete. MCWRC flooring has been delivered. Ouachita kitchen material has been ordered and awaiting arrival.
	Camera Equipment - All Units	320,000	42,656	277,344	13%	12%	cameras as requested/approved.
	Lock/Riot Gates - All Units	90,500	22,441	68,059	25%	25%	on-going.
	AC Units-All Units	70,000	7,625	62,375	11%	10%	repairing & replacing daily.
	Subtotal	\$ 701,500	\$ 89,398	\$ 612,102			
Capital Projects FY22 Carry Forward	Metal Ceilings	25,000	0	25,000	0%	0%	Wrightsville showers are underway.
	ORCU Gravel Pit Operations	35,000	0	35,000	0%	0%	on-going.
	Dog Kennel/Horse Stable Malvern	58,000	14,785	43,215	25%	50%	Dog kennel is complete and delivered. Site work has started on horse barn and work on that project will begin as soon as the site is ready for construction. Difference in % complete and construction complete is the use of existing material on Dog Kennel.
	Emergency Generator - All Units	130,000	0	130,000	0%	0%	Cummins East Bldg generator ordered awaiting delievery. No ETA from vendor.
	Delta Perimeter Video Surveillance	622,000	31,606	590,394	5%	0%	We have received the notice to proceed from DBA. The pre-con meeting was made on June 22nd to assess mobilization and start date for the project. In person site visits were complete. As soon as the NCU project is completed the vendor will move to the Delta Unit for their sysytem install. The funds spent is reflective of on-call design fees.
	Roof Repairs-Cummins	130,700	0	130,700	0%	0%	Need repairs at Delta, Varner, Tucker Max and Tucker. Working through repairs with vendor. We have also assessed Lee County Jail and Mississippi County Work Release. Office of State Procurement secured a State contract to purchase roofing materials.
	Roof Repairs-Cummins Laundry		0				
	Construction/Maintenance		0				
	Roof Repairs-Delta		0				
	Roof Repairs-East Arkansas		0				
	Roof Repairs-Max		0				
	Roof Repair-McPherson		0				
	Roof Repair - NCU		0				
	Roof Repair - RLW		0				
	Roof Repairs-Tucker		0				
Roof Repairs-Varner	0						
Roof Repairs-Wrightsville	0						
Subtotal	\$ 1,000,700	\$ 46,391	\$ 954,309				
New Projects	Additional Metal Fab	10,000	0	10,000	0%	0%	
	PB Warehouse Drive Replacement	158,000	51,673	106,327	33%	49%	The fuel island portion of this project is 90% complete. We have some addditional concrete that needs to be applied to the apron and it will be 100% complete.
	Subtotal	\$ 168,000	\$ 51,673	116,327			
	Architect Fees	30,000	0	30,000	0%		
Total	\$ 1,900,200	\$ 187,462	\$ 1,712,738				

Notes: Report has not been reconciled against Accountings Reconciled Reports. Tolerance/Deviation is with in 1% of Projected Spending.