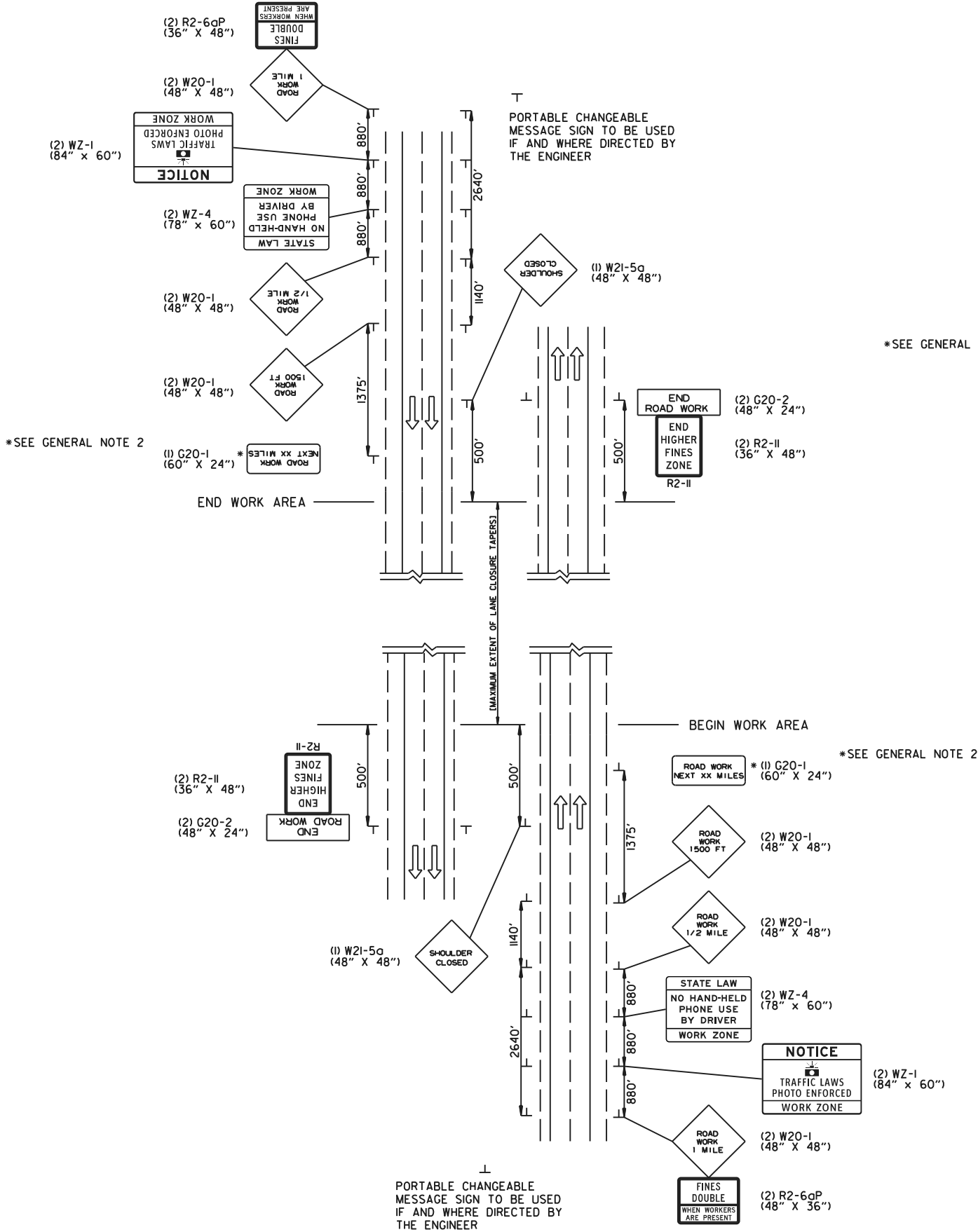


NOTE : W20-1 (VARIOUS DISTANCE) ADVANCE SIGNS TO BE REPLACED AS NEEDED BY EQUIVALENT W20-5 SIGNS AS WORKING AREA SHIFTS.



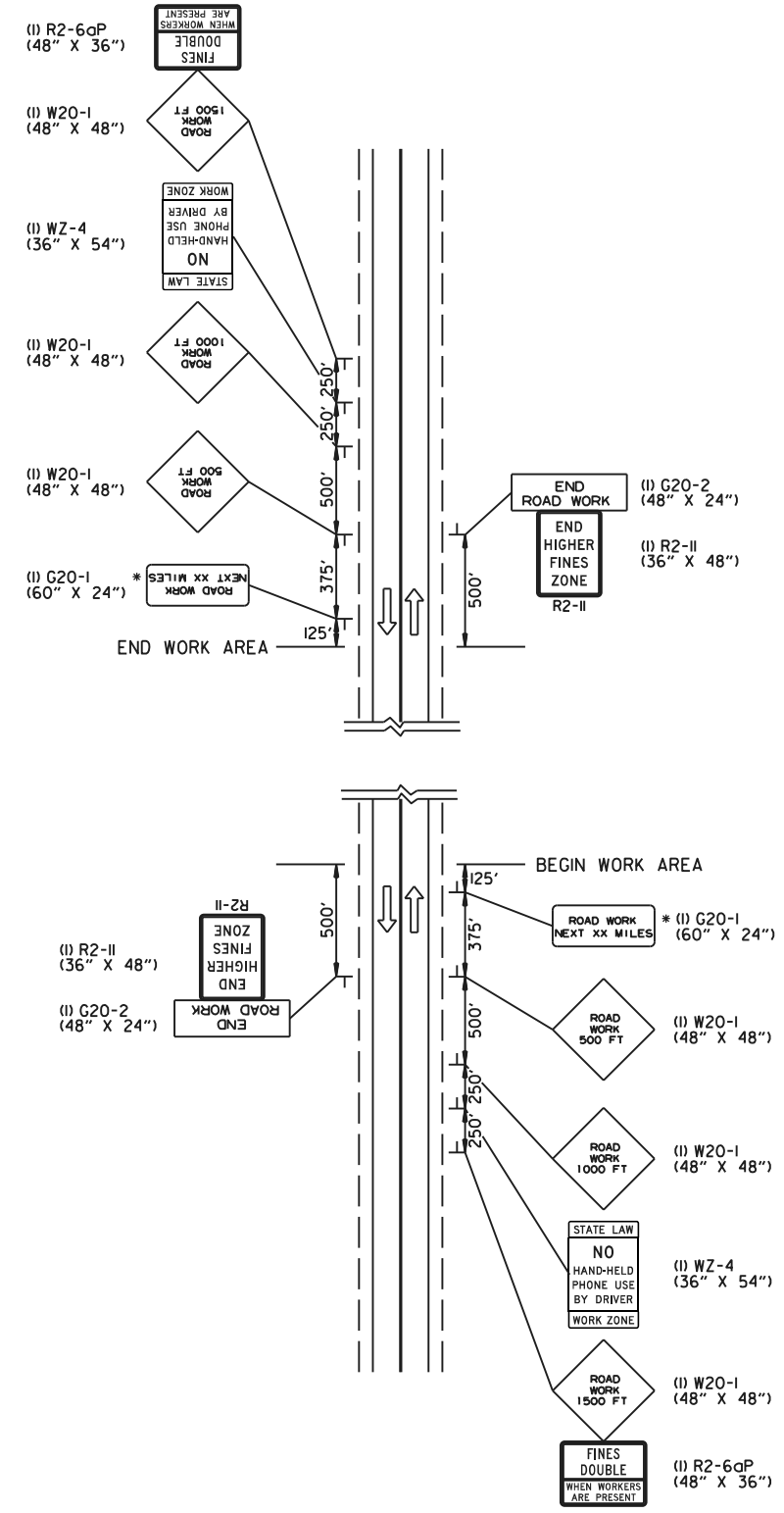
*SEE GENERAL NOTE 2

*SEE GENERAL NOTE 2

*SEE GENERAL NOTE 2

NOTE : W20-1 (VARIOUS DISTANCE) ADVANCE SIGNS TO BE REPLACED AS NEEDED BY EQUIVALENT W20-5 SIGNS AS WORKING AREA SHIFTS.

(A) TYPICAL APPLICATION - ADVANCE WARNING SIGNS AT BEGINNING AND END OF JOB (FULLY CONTROLLED ACCESS FACILITIES) (ALL STAGES)



(B) TYPICAL APPLICATION - ADVANCE WARNING SIGNS AT BEGINNING AND END OF JOB (NON-FULLY CONTROLLED ACCESS FACILITIES) (ALL STAGES)

- GENERAL NOTES:
1. FLAGS MAY BE MOUNTED TO SIGNS AT NIGHT AS NEEDED.
 2. THE G20-1 SIGN SHOULD BE INSTALLED ON JOBS OF OVER TWO MILES IN LENGTH. WHEN THE LANE CLOSURE IS NOT AT THE BEGINNING OF THE PROJECT, THE G20-1 SIGN SHALL BE ERRECTED 125' IN ADVANCE OF THE JOB LIMIT. ADDITIONAL W20-1 (1 MILE OR 1500 FT) SIGNS ARE NOT REQUIRED IN ADVANCE OF LANE CLOSURES THAT BEGIN INSIDE THE PROJECT LIMITS. THE DISTANCE DISPLAYED ON THE G20-1 SIGN SHALL BE STATED TO THE NEAREST WHOLE MILE.
 3. PORTABLE CHANGEABLE MESSAGE SIGNS SHALL BE DELINEATED BY AFFIXING CONSPICUITY MATERIAL IN A CONTINUOUS LINE ON THE FACE OF THE TRAILER. WHEN PLACED ON OR ADJACENT TO THE SHOULDER AND NOT BEHIND A POSITIVE BARRIER, THIS DEVICE SHALL BE DELINEATED BY PLACING FIVE (5) TRAFFIC DRUMS, EQUALLY SPACED ALONG THE TRAFFIC SIDE OF THE DEVICE. PAYMENT FOR TRAFFIC DRUMS SHALL BE CONSIDERED INCLUDED IN THE PRICE BID FOR PORTABLE CHANGEABLE MESSAGE SIGNS.
 4. PORTABLE CHANGEABLE MESSAGE SIGNS SHALL MEET THE REQUIREMENTS OF THE MANUAL FOR ASSESSING SAFETY HARDWARE (MASH).

*SEE GENERAL NOTE 2

CORRECTED WZ-4 SIGN DIMENSIONS			ARKANSAS STATE HIGHWAY COMMISSION		
ADDED WZ-4 AND REVISED GENERAL NOTE 1			<p align="center">STANDARD TRAFFIC CONTROLS FOR HIGHWAY CONSTRUCTION</p>		
REPLACED "SPEED" WITH "TRAFFIC LAWS" ON WZ-1					
ISSUED					
DATE	REV	DESCRIPTION	DATE EFFECTIVE	STANDARD DRAWING	TC-6
04-09-26			04-09-2026		