



ATG

DECM

AR DOT
ARKANSAS DEPARTMENT
OF TRANSPORTATION

Best Practices in MTP Development

2025 Arkansas Transportation Summit
October 29, 2025

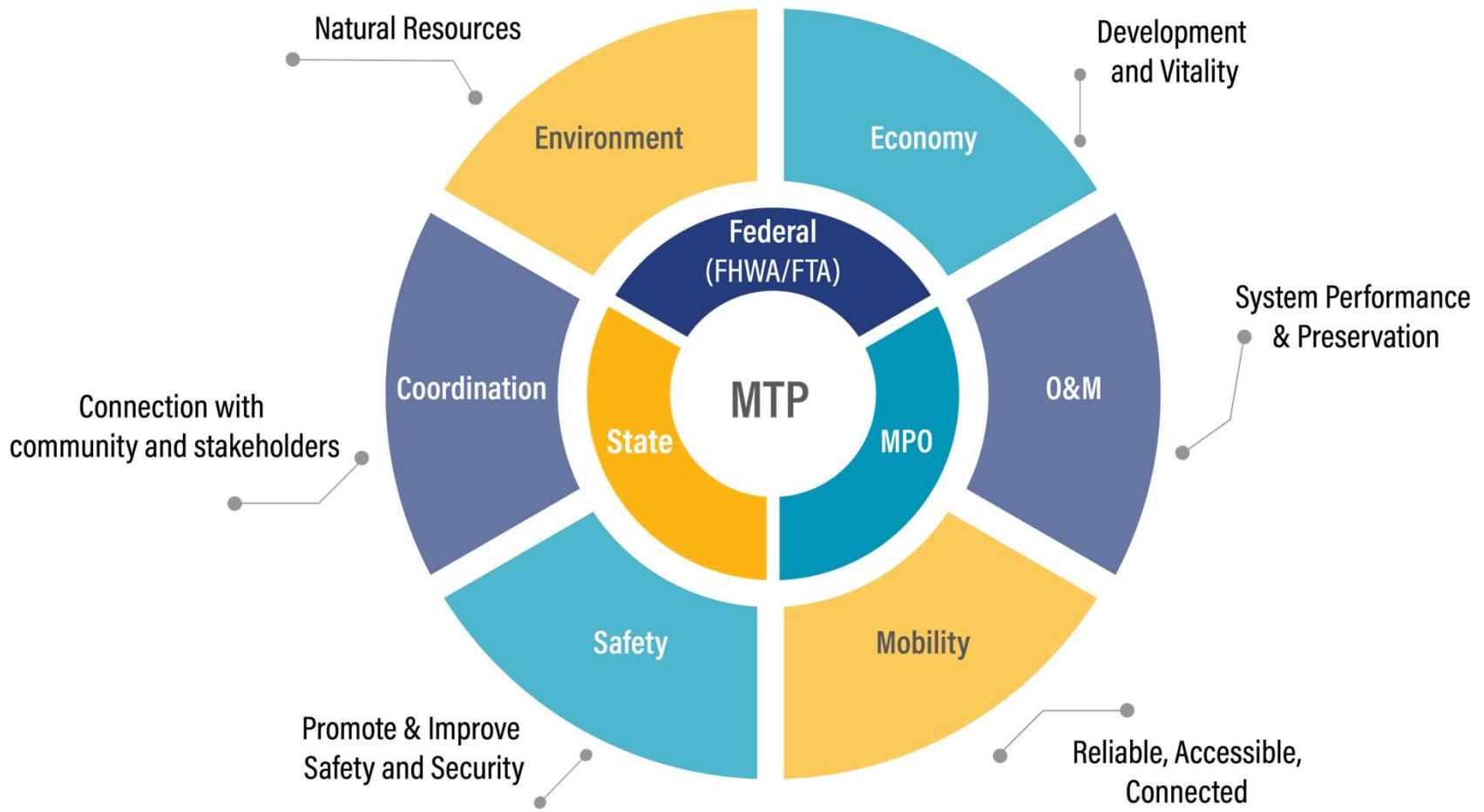
Metropolitan Transportation Plans (MTP)

A Metropolitan Transportation Plan (MTP):

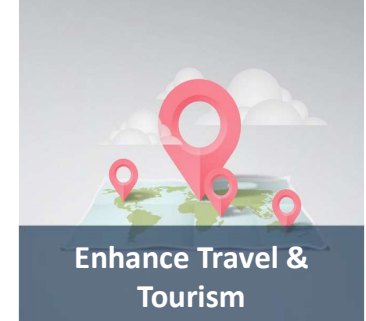
- ✓ Is a fiscally constrained 20+ year plan
- ✓ Identifies how the metro area will operate a multi-modal system
 - Transit, highway, bicycle, pedestrian, and accessible transportation
- ✓ Outlines how the area plans to allocate funding for regionally significant projects
- ✓ Must contain certain required elements



Vision and Goal Consistency



Required Planning Factors



MTP Analysis Helps Identify Local Priorities

Our MTPs Include a Series of 9 Technical Memos.

1

Plan
Review

2

Demographic
Trends

3

Equity
Analysis

4

Cultural, Historical,
& Environmental
Assets

5

Safety

6

Congestion &
Reliability

7

Pavement &
Bridge
Condition

8

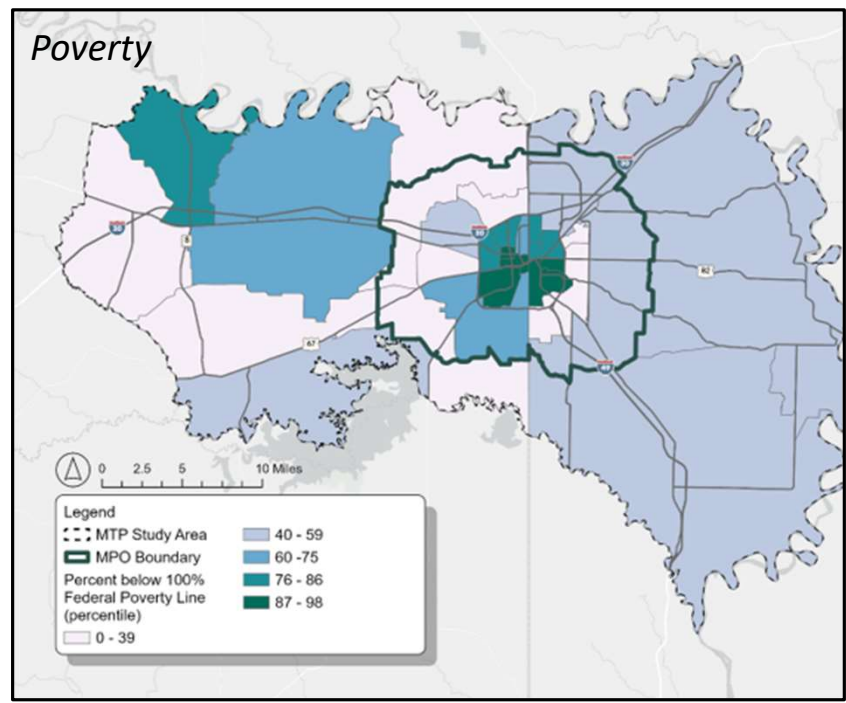
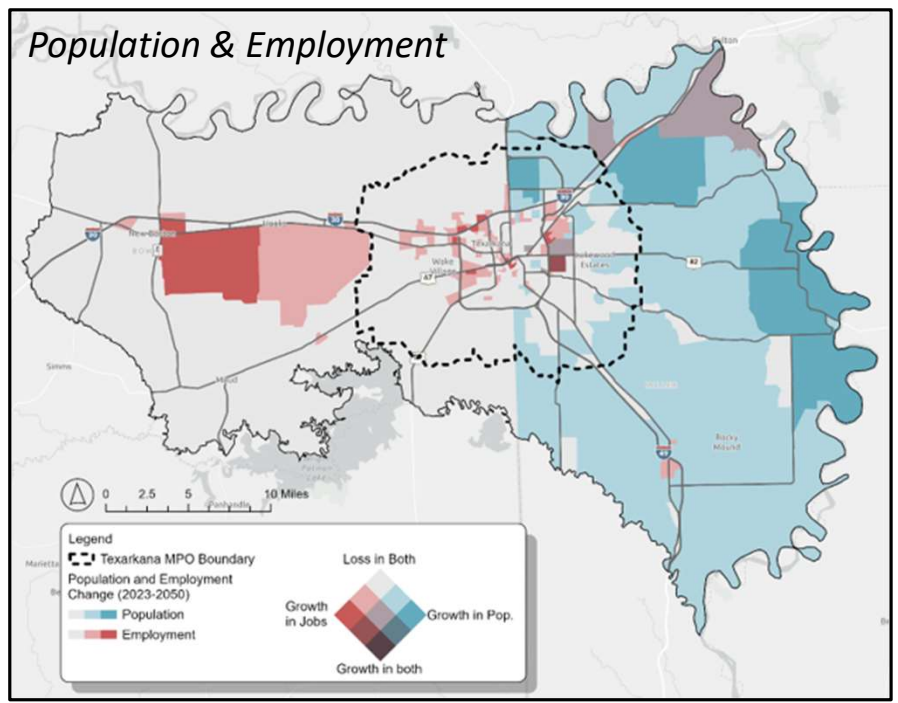
Active
Transportation

9

Transit

2 3

Demographic Trends and Equity Analysis

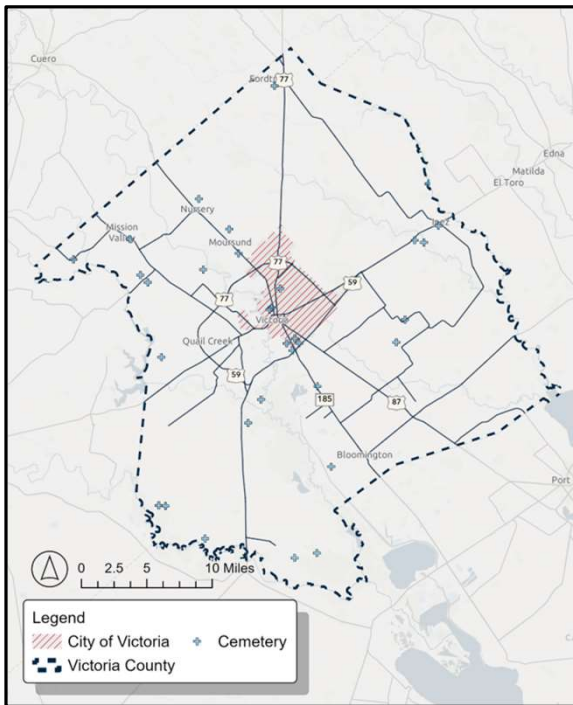


Texarkana MPO, 2050 MTP

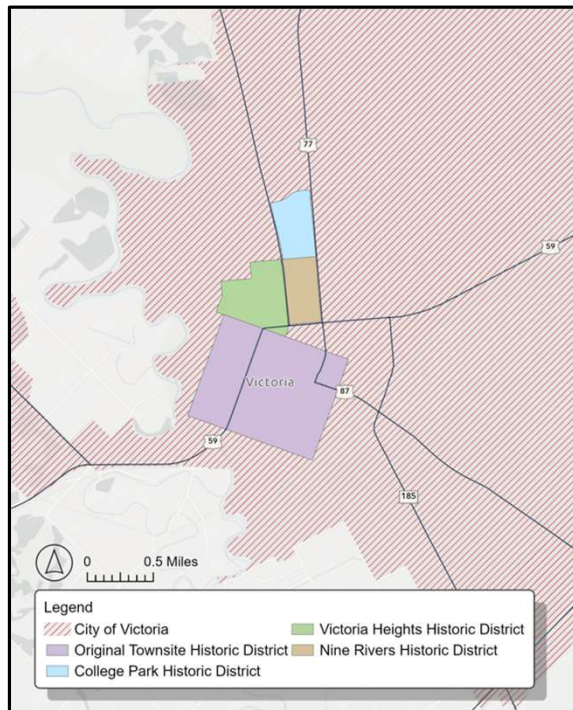
4

Cultural, Historical, & Environmental Assets

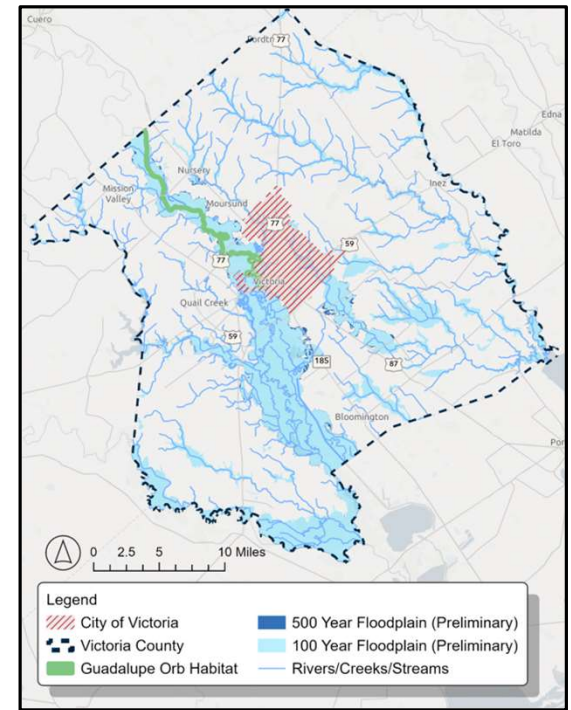
Cultural Assets



Historical Assets



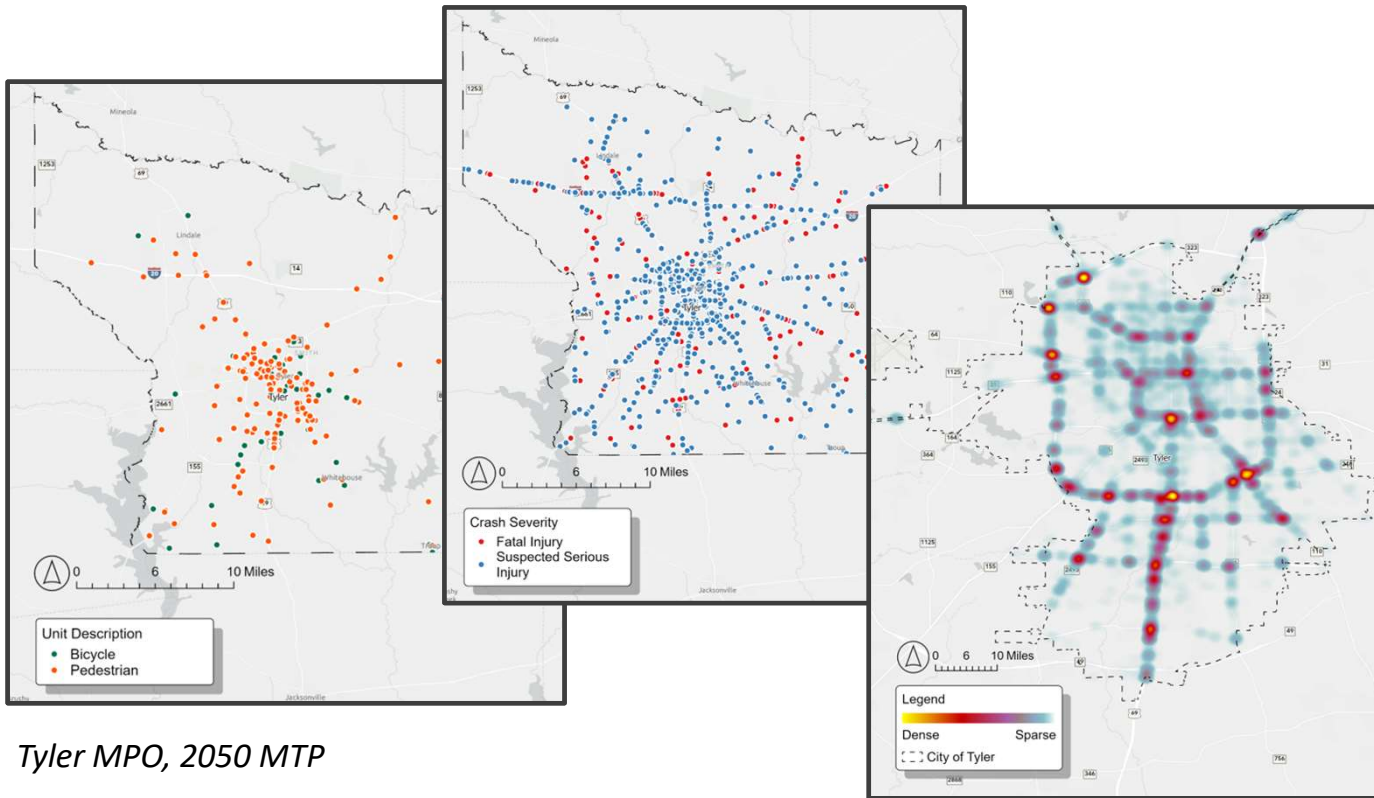
Environmental Assets



Victoria MPO, 2050 MTP

5

Safety



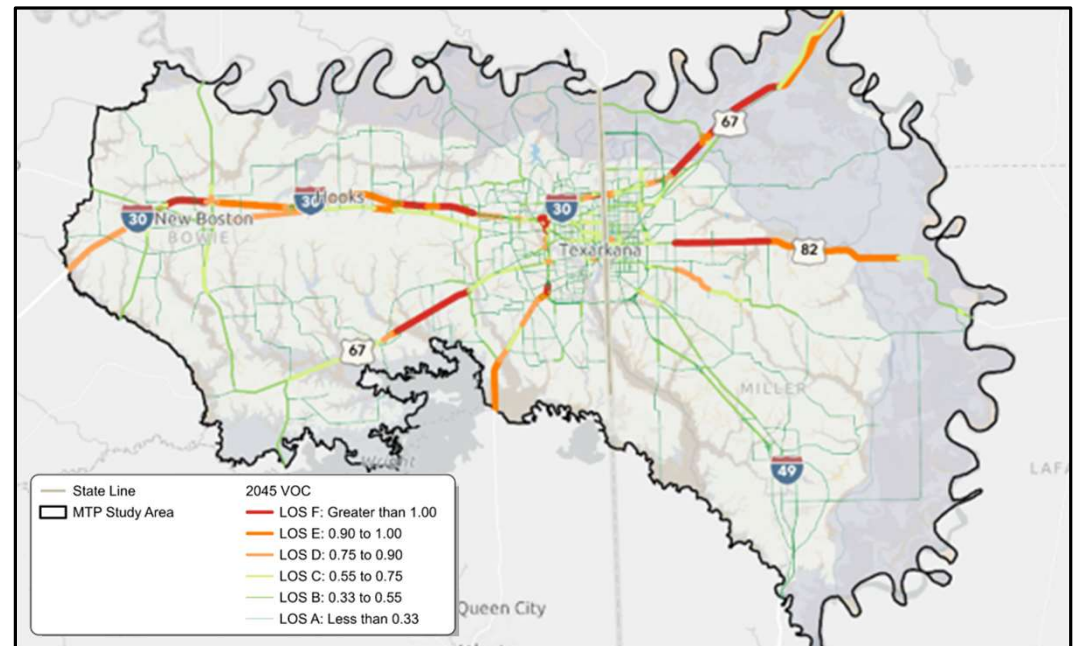
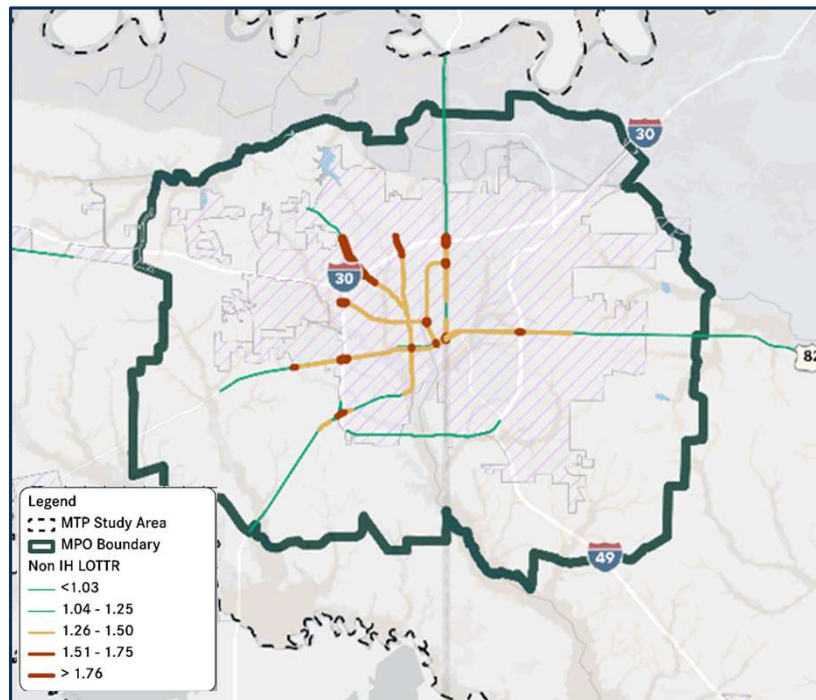
Tyler MPO, 2050 MTP

Understanding location, frequency, type, and severity of crashes

6

Congestion and Reliability

Level of Service & Travel Time reliability

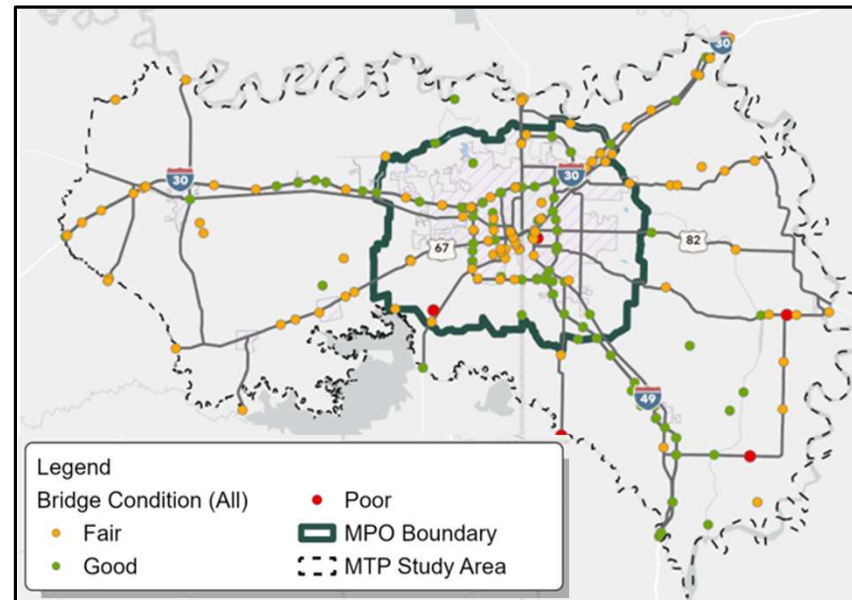
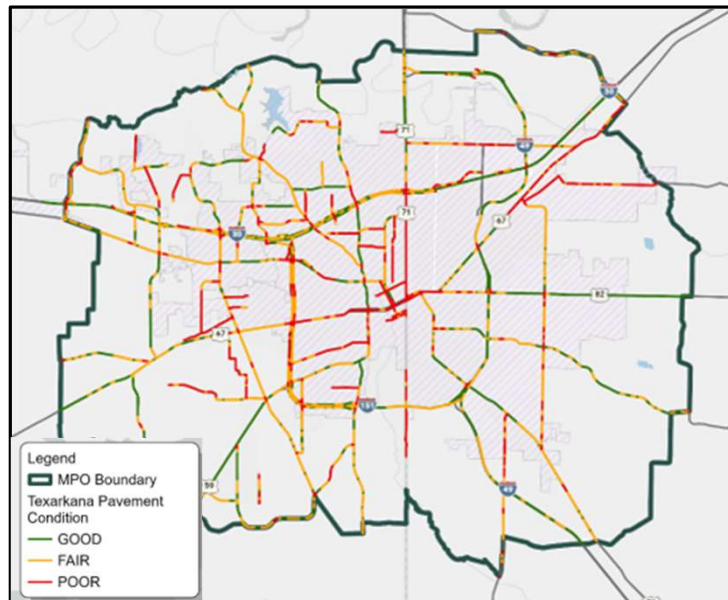


Texarkana MPO, 2050 MTP

7

Pavement & Bridge Conditions

Performance measures for condition assessment

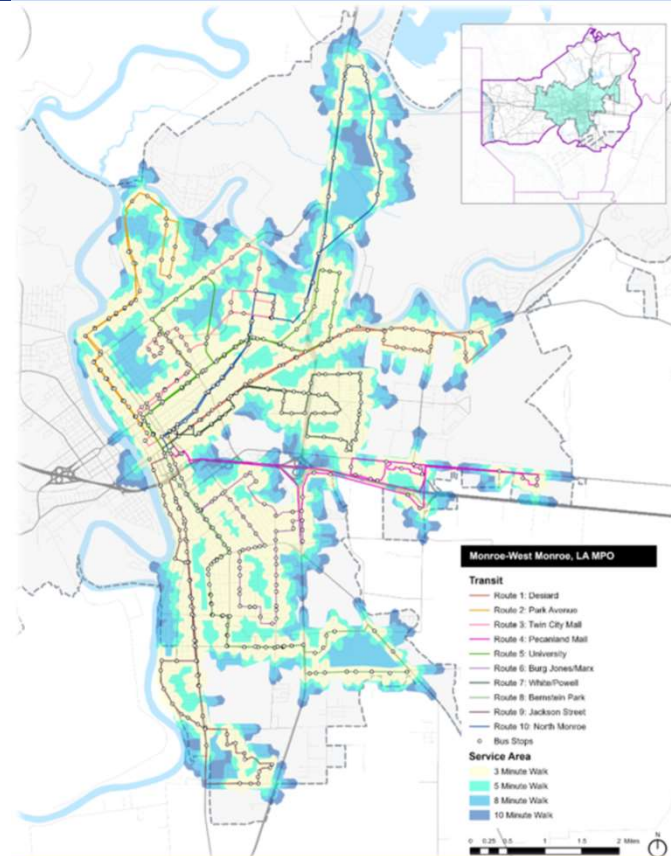
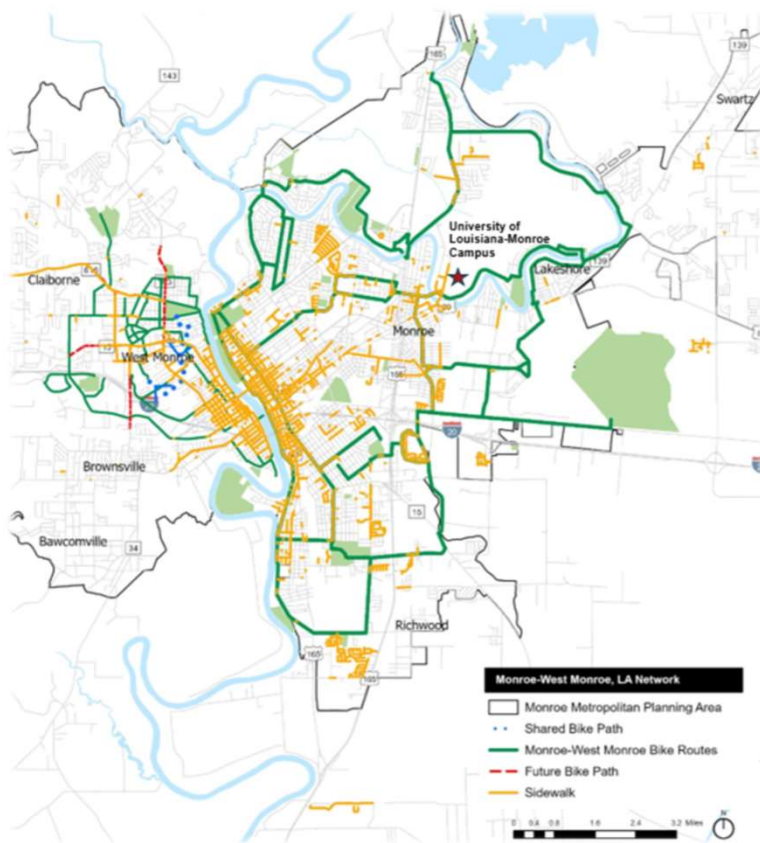


Texarkana MPO, 2050 MTP



Active Transportation & Transit

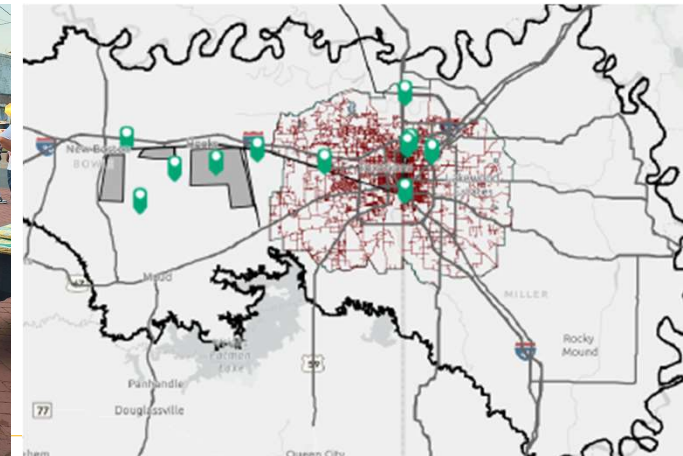
Transit Needs Assessment & Network Inventory



Monroe MPO, 2050 MTP

Public Involvement Stakeholder Engagement

- Follow the MPO Public Involvement Plan
- Meet the public where they are
- Engage stakeholders early and at key milestones
- Ensure TAC and TPC understand and are active supporters



MTP Project Prioritization & Project Delivery

Large Urban Areas

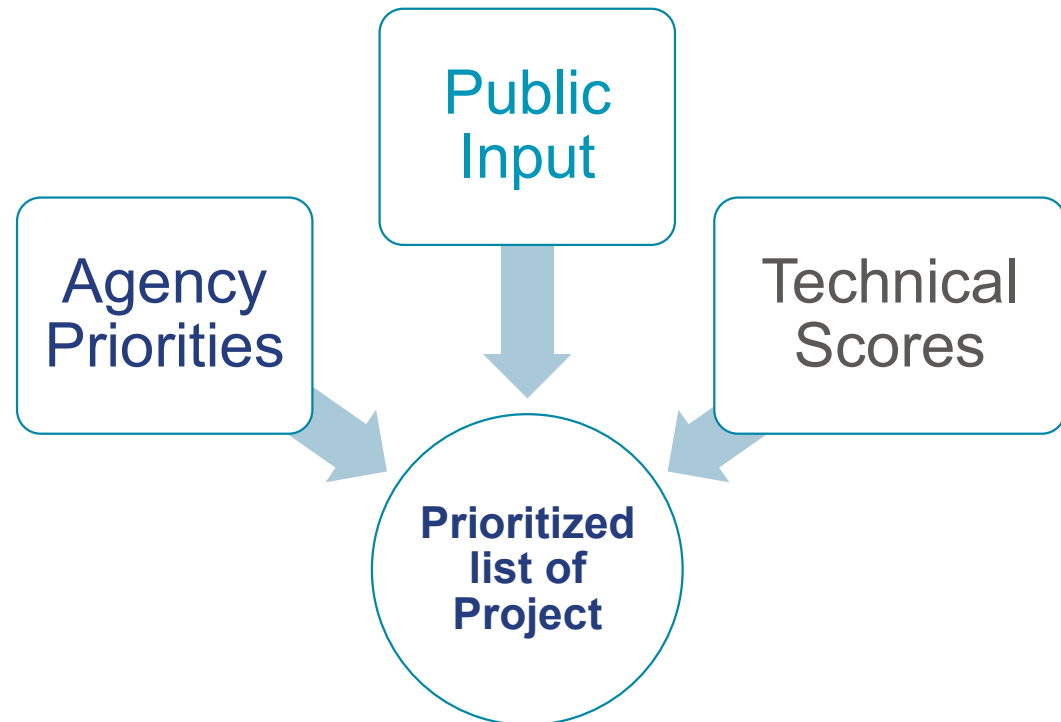
- MPO in Consult with DOT

Small Urban Areas

- DOT in Consult with MPO

Conveying priorities to greater public

- What is most important to the Community



MTP Project Prioritization & Project Delivery

Project Delivery is a function of

- Finance
- Logistics
- Readiness

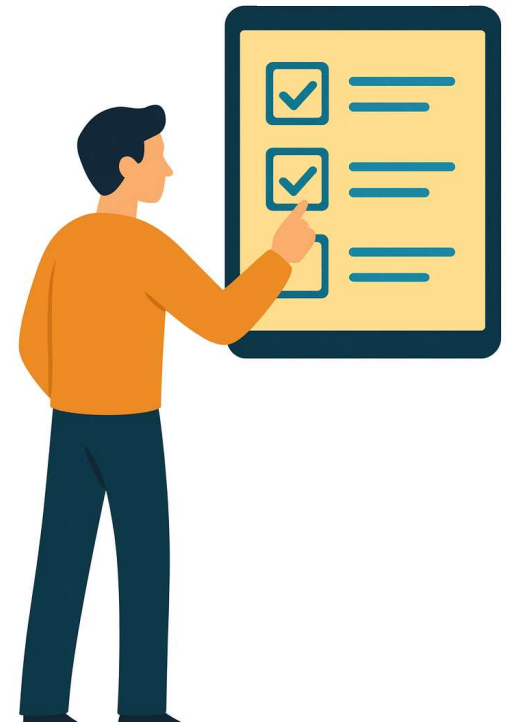
Prioritization and Project Delivery may not always match

Consideration of project readiness and phasing

- Planning – Design – ROW - Construction

Reprioritize projects at every plan update

- New better data and changing local priorities

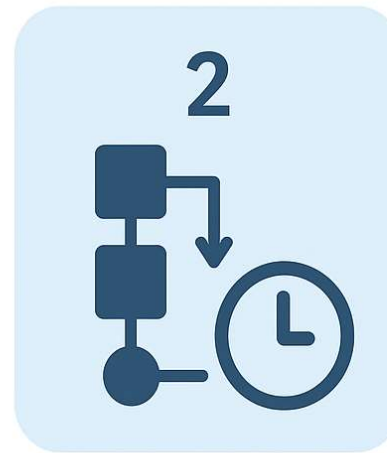


Financial Constraint

Based on reasonable expectations of funding and project costs



Estimate available funding (amount & timing)

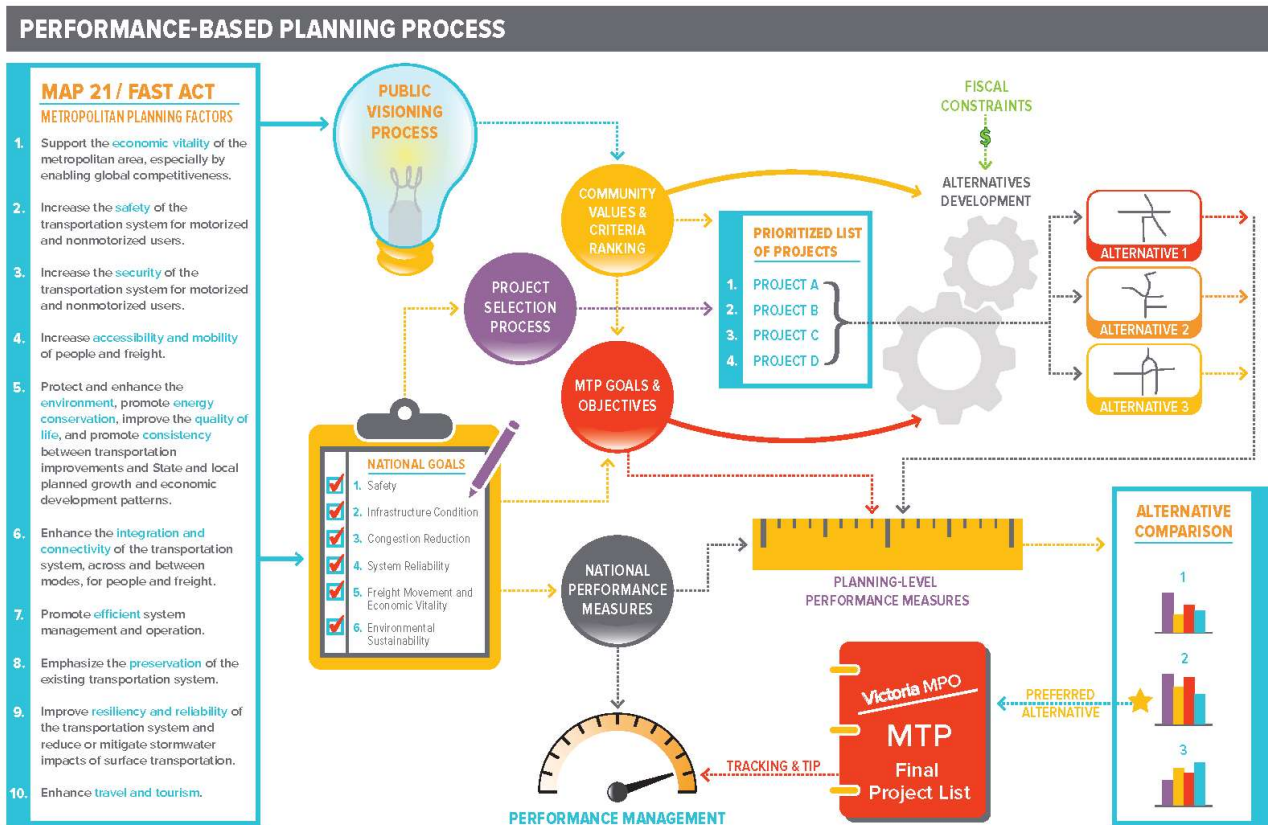


Estimate project costs & timing



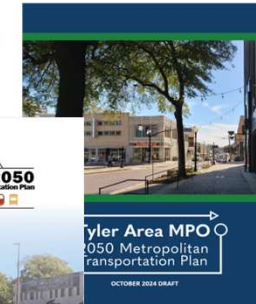
Program projects according to available funding

MTP Development Process



Putting it all Together

- ✓ MTPs have a set of required elements
 - Beyond the requirements, you have the flexibility to meet local needs
- ✓ Detailed analysis helps identify local needs
 - Better understand purpose and need
- ✓ Project prioritization conveys priority to public
- ✓ Prioritization and programming may not always align
- ✓ Plans must be kept current and reprioritized
 - Needs and Priorities change



QUESTIONS & PANEL DISCUSSION

Contact Us

Tim Smith | tsmith@dccm.com
JD Allen | jdallen@dccm.com

