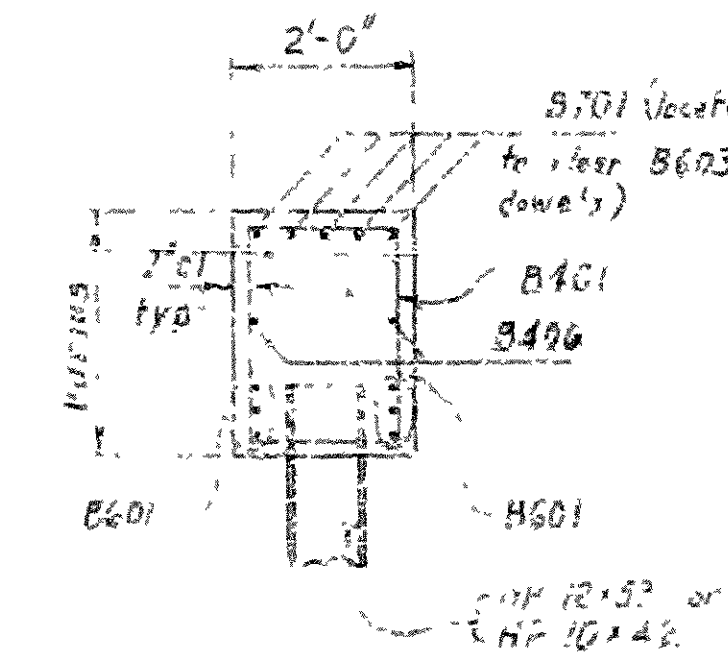
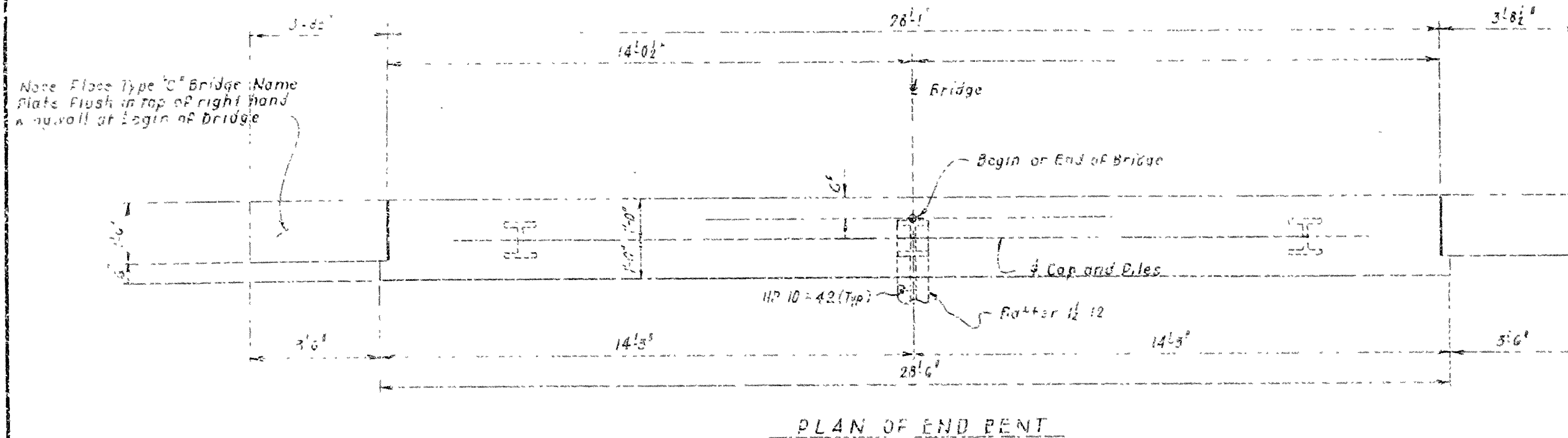


DATE R-REQD	DATE FILLED	DATE APPROV	DATE F-REQD	FED. ROAD NO.	STATE	FED. AID PROJ. NO.	SHEET NO.	TOTAL SHEETS
2-11-78	Oct-19-78			6	ARK.			
				JOB NO				

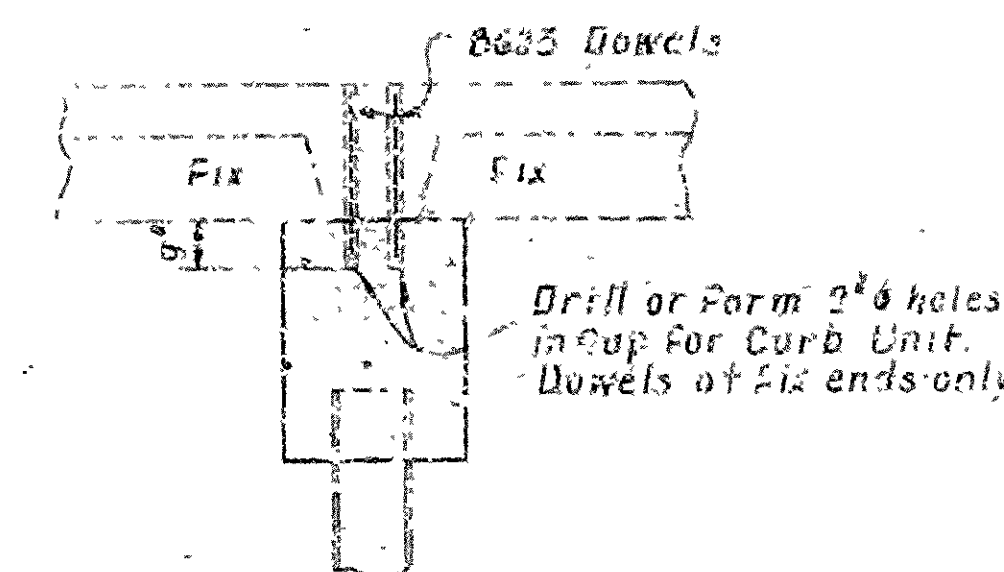
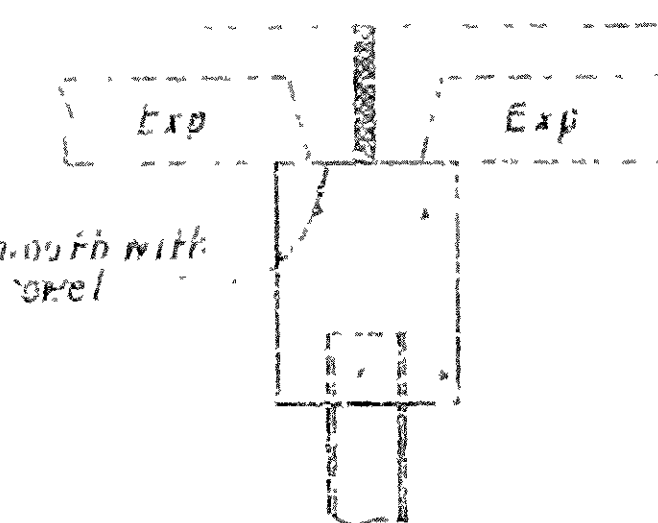
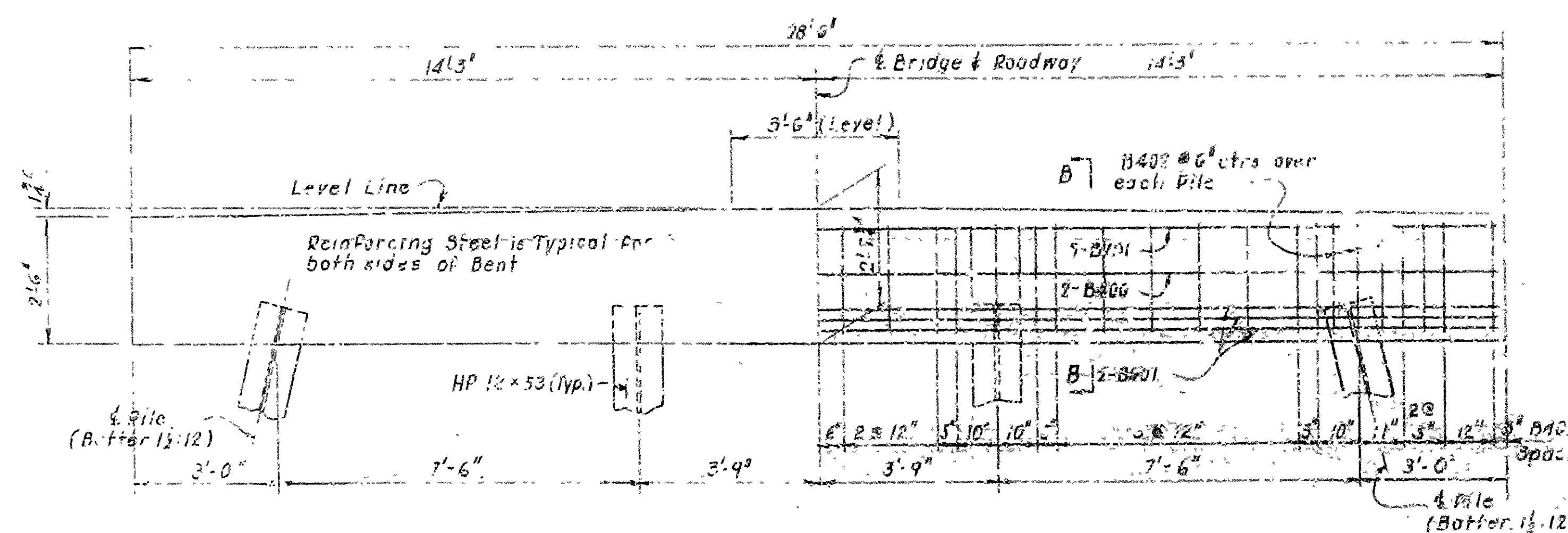
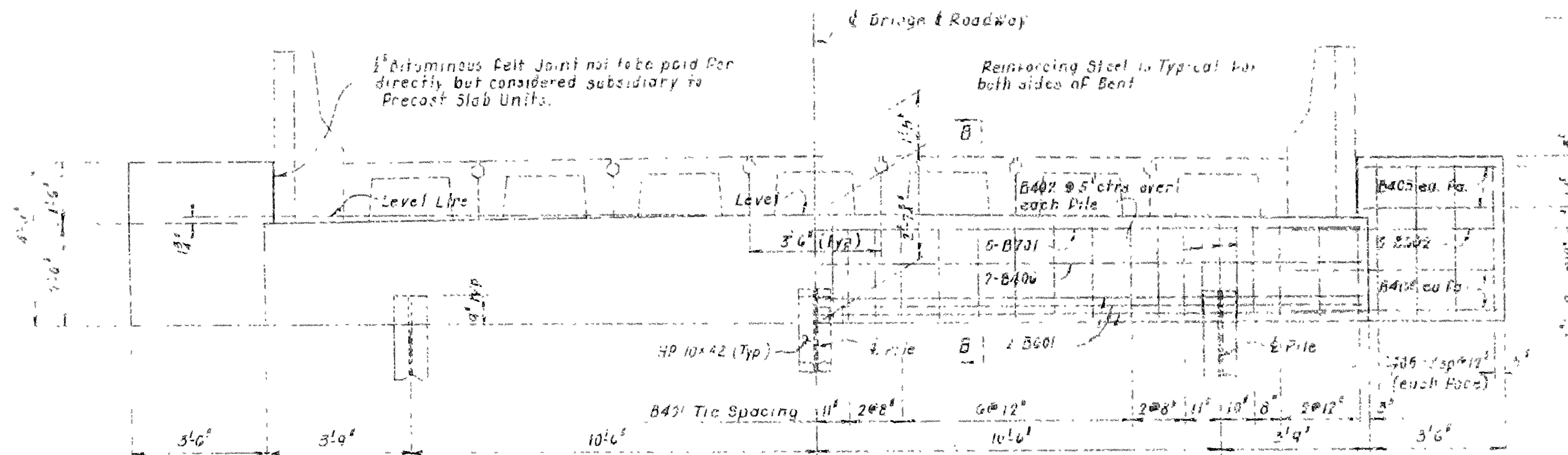
BENT STD.



Mark	To Row		Length	Pin Dia.
	Ext	Int		
B401	30	32	8 1/2"	2"
B402	9	12	5 7/8"	1"
B603	8		3 1/2"	3/4"
B404	2		5"	5/8"
B405	1 1/2			3/4"
B406	2		5 7/8"	5/8"

Bending Diagrams	
(Dimers are out to out of bars)	



EVENTS	REINFORCING	CONCRETE
INT.	* 8'9 LB	5.44 Cu.Yd.
END	2.2 LB	7.09 Cu.Yd.

\* At Fixed Seats Only

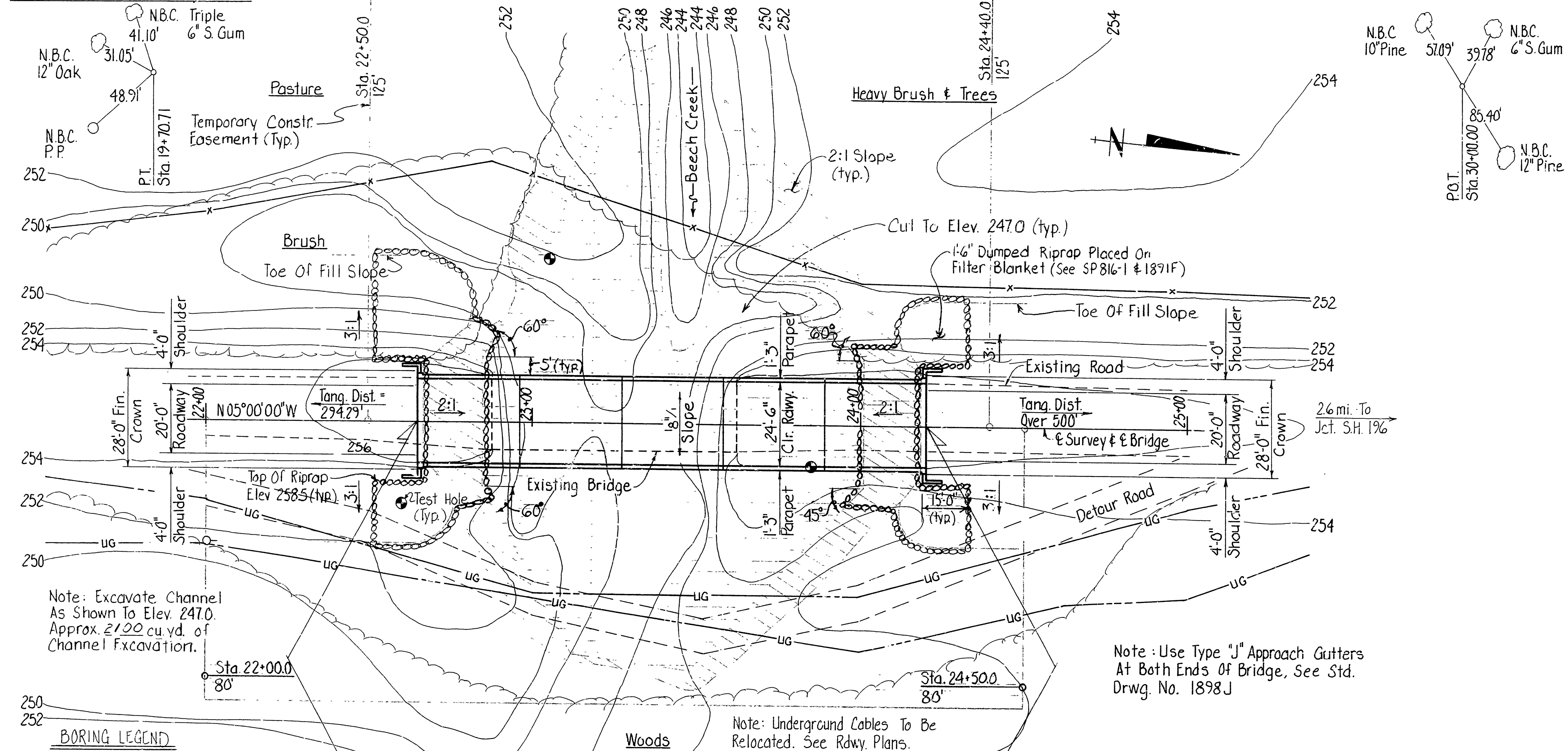
DETAILS OF STD. PILE BENTS  
HP10x42 PILES IN END BENTS  
HP12x53 PILES IN INT. BENTS  
FOR 31'-0" R.C. PRECAST SLAB SPANS  
24'-6" CL. RDWY. PRECAST PARA. RAIL

ROUTE		SEC.
ARKANSAS STATE HIGHWAY COMMISSION		
LITTLE ROCK, ARK.		
DESIGNED BY: <u>L. M.</u>	CHECKED BY: <u>J. S.</u>	DATE: <u>7-6-77</u>
DESIGNED BY: <u>J. S.</u>	CHECKED BY: <u>J. S.</u>	DATE: <u>7-7-77</u>
DRAWING NO. 15313		SCALE: <u>1" = 100'</u>
BRIDGE NO.		DRAWING NO. 15313

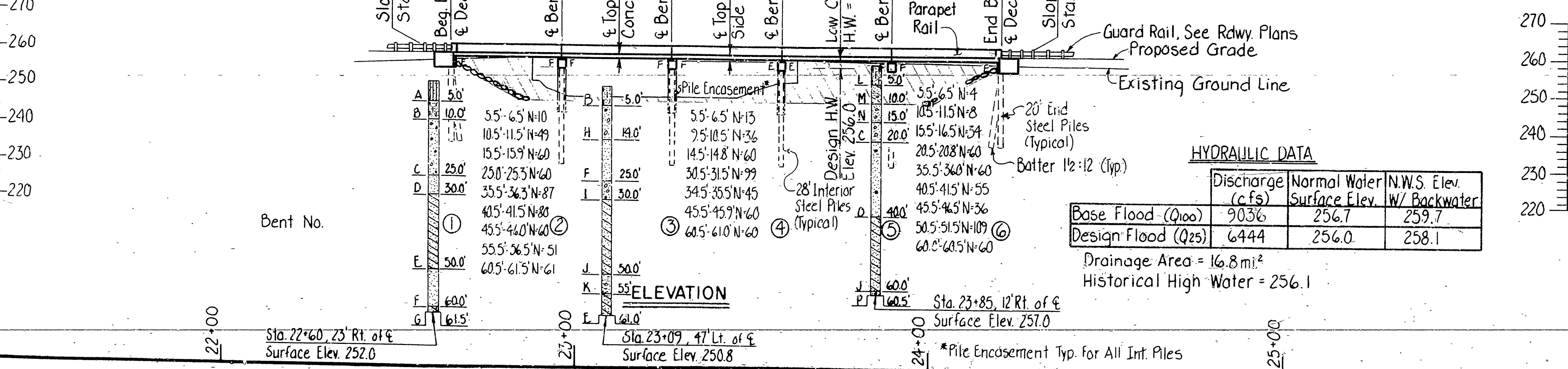




For R/W Data, See Rdwy. Plans



- BORING LEGEND**
- A Moist, Loose, Sandy Silt
  - B Moist, Loose, Silty Sand
  - C Wet, Dense Sand & Gravel
  - D Moist, Very Dense Sand
  - E All Layers of Moist, Hard Clay with Sand Lenses and Moist, Dense Sand
  - F Wet, Very Dense Sand
  - G Moist, Hard Silty, Sandy Clay
  - H Wet, Med. Dense to Dense Sand & Gravel
  - I Wet, Very Dense Sand & Gravel
  - J All Layers of Moist, Very Shiff to Hard Clay with Sand Lenses & Moist, Dense Sand
  - K Wet, Dense Sand with Some Thin Lenses of Cemented Sand
  - L Moist, Loose, Silty Sand (Fill Material)
  - M Moist, Very Loose Clayey Sand with Some Organic Matter
  - N Wet, Loose Sand & Gravel
  - O Wet, Very Dense Sand with Some Organic Matter
  - P Wet, Very Dense Sand with Some Gravel



**HYDRAULIC DATA**

	Discharge (cfs)	Normal Water Surface Elev.	N.W.S. Elev. w/ Backwater
Base Flood (Q100)	9036	256.7	259.7
Design Flood (Q25)	6444	256.0	258.1

Drainage Area = 16.8 mi<sup>2</sup>  
Historical High Water = 256.1

94

DATE REVISED	DATE FILMED	DATE REVISED	DATE FILMED	FED. ROAD NO.	STATE	FED. AID PROJ. NO.	SHEET NO.	TOTAL SHEETS
				6	ARK.			
						BR-46-2	11	33
							4499-LAYOUT-	26485

**GENERAL NOTES**

BENCH MARK: NAIL IN SIDE OF POWER POLE 35' RT. STA. 21+86.0, ELEV. 252.31.

DESIGN SPECIFICATIONS: AASHTO STANDARD SPECIFICATIONS FOR HIGHWAY BRIDGES, 1977 EDITION WITH CURRENT INTERIMS.

CONSTRUCTION SPECIFICATIONS: ARKANSAS STATE HIGHWAY COMMISSION STANDARD SPECIFICATIONS FOR HIGHWAY CONSTRUCTION, EDITION OF 1978 AND APPLICABLE SPECIAL PROVISIONS.

DESIGN LIVE LOAD: H 20-44

DESIGN METHOD: LOAD FACTOR

CONCRETE: CONCRETE IN THE SUBSTRUCTURE SHALL BE CLASS "S"; CONCRETE IN THE SUPERSTRUCTURE SHALL BE CLASS S. ALL CONCRETE SHALL HAVE A MINIMUM 28 DAY COMPRESSIVE STRENGTH, f<sub>c</sub> = 3500 PSI, AND SHALL BE POURED IN THE DRY. EXPOSED CORNERS TO BE CHAMFERED 3/4" UNLESS OTHERWISE NOTED.

REINFORCING STEEL: REINFORCING STEEL SHALL CONFORM TO ASTM A615 OR A617, GRADE 60 (f<sub>y</sub> = 60,000 PSI) OR AS SPECIFIED ON THE DETAIL DRAWINGS.

PILING: PILING IN BENTS 1 AND 6 SHALL BE HP10X42 AND SHALL BE DRIVEN TO A MINIMUM BEARING CAPACITY OF 44 TONS PER PILE. PILING IN BENTS 2 THRU 5 SHALL BE HP10X42 AND SHALL BE DRIVEN TO A MINIMUM BEARING CAPACITY OF 44 TONS PER PILE. PILING IN ALL BENTS SHALL HAVE A MINIMUM PENETRATION OF 15 FT. BELOW THE GROUND LINE. ALL PILING SHALL BE DRIVEN WITH AN APPROVED AIR, STEAM, OR DIESEL HAMMER.

PILES IN END BENTS SHALL BE DRIVEN AFTER EMBANKMENT TO BOTTOM OF CAP IS IN PLACE. LENGTHS OF PILING SHOWN ARE ASSUMED FOR ESTIMATING QUANTITIES FOR BID COMPARISON PURPOSES ONLY. ACTUAL LENGTHS TO BE DETERMINED IN THE FIELD.

DRIVE ONE 33 FT. TEST PILE IN BENTS 2 & 5.

FOR DETAILS OF END BENTS, SEE DWG. NO. 15316

FOR DETAILS OF INT. BENTS, SEE DWG. NO. 15316

FOR DETAILS OF SPANS, SEE DWG. NO. 15180

FOR DETAILS OF PILING, SEE DWG. NO. 14995A

FOR DETAILS OF APPROACH GUTTERS, SEE DWG. NO. 1898J

THE EXISTING BRIDGE SHALL BE REMOVED BY THE CONTRACTOR, BUT SHALL REMAIN THE PROPERTY OF THE COUNTY.

FOR DETAILS OF DETOUR, SEE ROADWAY PLANS.

DETOUR BRIDGE: THE CONTRACTOR SHALL CONSTRUCT A 45' DETOUR BRIDGE APPROXIMATELY 40' DOWNSTREAM. THE BRIDGE SHALL HAVE A MINIMUM DECK ELEVATION OF 256.0, A MINIMUM ROADWAY WIDTH OF 20' AND BE DESIGNED FOR HIS LIVE LOADING. SEE SECTION 603 OF THE STANDARD SPECIFICATIONS AND SP 603-3. THE CONTRACTOR MAY WISH TO USE 15' UNITS FROM THE EXISTING BRIDGE IN THE DETOUR BRIDGE. THE ROAD COULD BE CLOSED TO TRAFFIC UNTIL THE 15' UNITS ARE IN PLACE AND THE DETOUR BRIDGE IS OPENED TO TRAFFIC. WHEN THE NEW BRIDGE IS COMPLETED AND OPENED TO TRAFFIC ANY UNITS IN THE DETOUR BRIDGE FROM THE EXISTING BRIDGE SHALL REMAIN THE PROPERTY OF THE COUNTY.

LAYOUT OF  
BRIDGE OVER BEECH CREEK  
BEECH CREEK BR. & APPRS.  
MILLER COUNTY

C.O. ROUTE 13 SEC.  
ARKANSAS STATE HIGHWAY COMMISSION  
LITTLE ROCK, ARK.

DRAWN BY: DHM DATE: 17 JAN 84  
CHECKED BY: AJP DATE: 2-10-84 SCALE: 1" = 20'-0"  
DESIGNED BY: DHM DATE: JAN 84

BRIDGE NO. 4499 DRAWING NO. 26485