

NOTE: Contractor to excavate Channel as shown in "Elevation" 100' Upstream and 100' Downstream. Channel to be excavated shall be at right angles to bridge from Sta. 34+65 first 50' right and left; thence curved to fit. Channel remaining 50' right and left. Excavation approximately 1500 Cu. Yds. Material to be wasted as directed by the Engineer.

NOTE: Roadway Approaches to be constructed by County Non-Participating in Federal Funds.

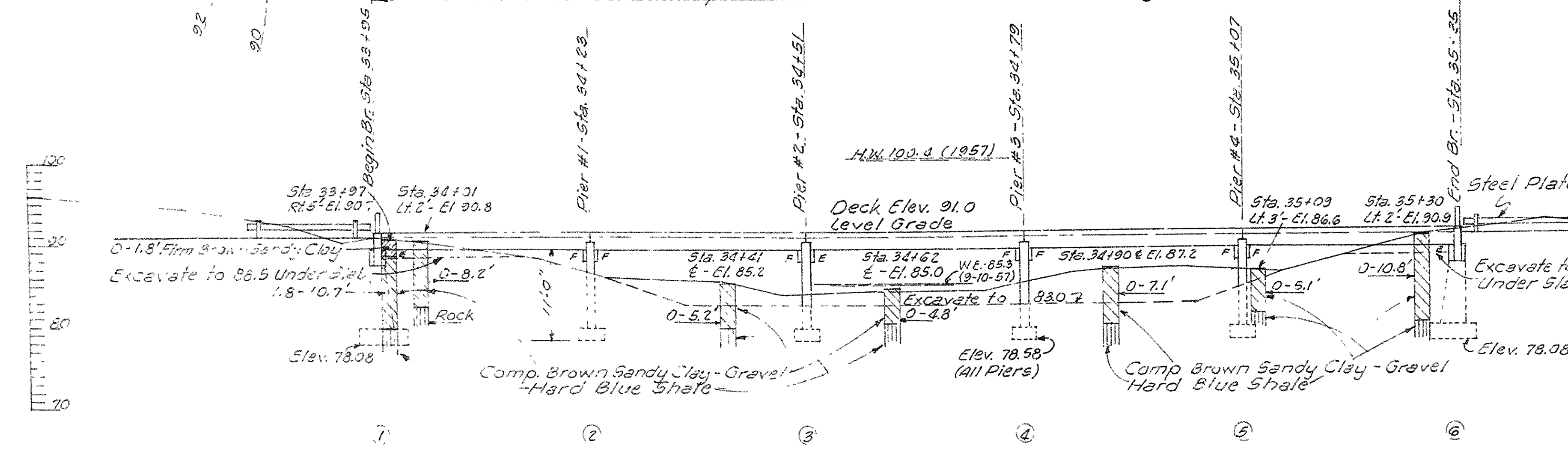
GENERAL NOTES:-

All concrete shall be poured in the dry. All exposed cor. and shall be chamfered $\frac{3}{4}$ " unless otherwise noted.
Rock excavation shall be made to neat lines concrete footings. Care shall be exercised to avoid shattering of rock faces by excessive blasting. Concrete in footing shall be poured directly against excavated surfaces of rock.
For Details of Slab Spans, Abutments and Piers, see Sheet No. 6
SPECIFICATIONS:- Arkansas State Highway Commission Standard Specifications for Road and Bridge Construction, adopted March 1, 1940.

SPECIAL NOTE:- Erect "Low Water Bridge" Warning Signs at shoulder line of roadway on right at Sta. 29+00 and on left at Sta. 40+00.
Erect "Water Level Gauge" Warning Signs on right shoulder line at Sta. 33+70 and on left shoulder line at Sta. 35+60.
Use Treated Timber Posts for the Construction of Signs. State Standard.

DESIGN SPECIFICATIONS - AASHO 1953

LIVE LOADING	H-15
UNIT STRESSES:	
Class "S" Concrete (n=10)	1,200 psi
Class "A" Concrete (n=15)	3,000 psi
Reinforcing Steel	60,000 psi
Foundation Pressure	2,200 psf



BENCH MARK:- 3 Nails in 7" Red Oak 7' Lt. Sta. 33+20 Elevation 100.0 (Assumed)

ELEVATION
Drainage Area 32.5 Sq. Mi.
C = 1.0

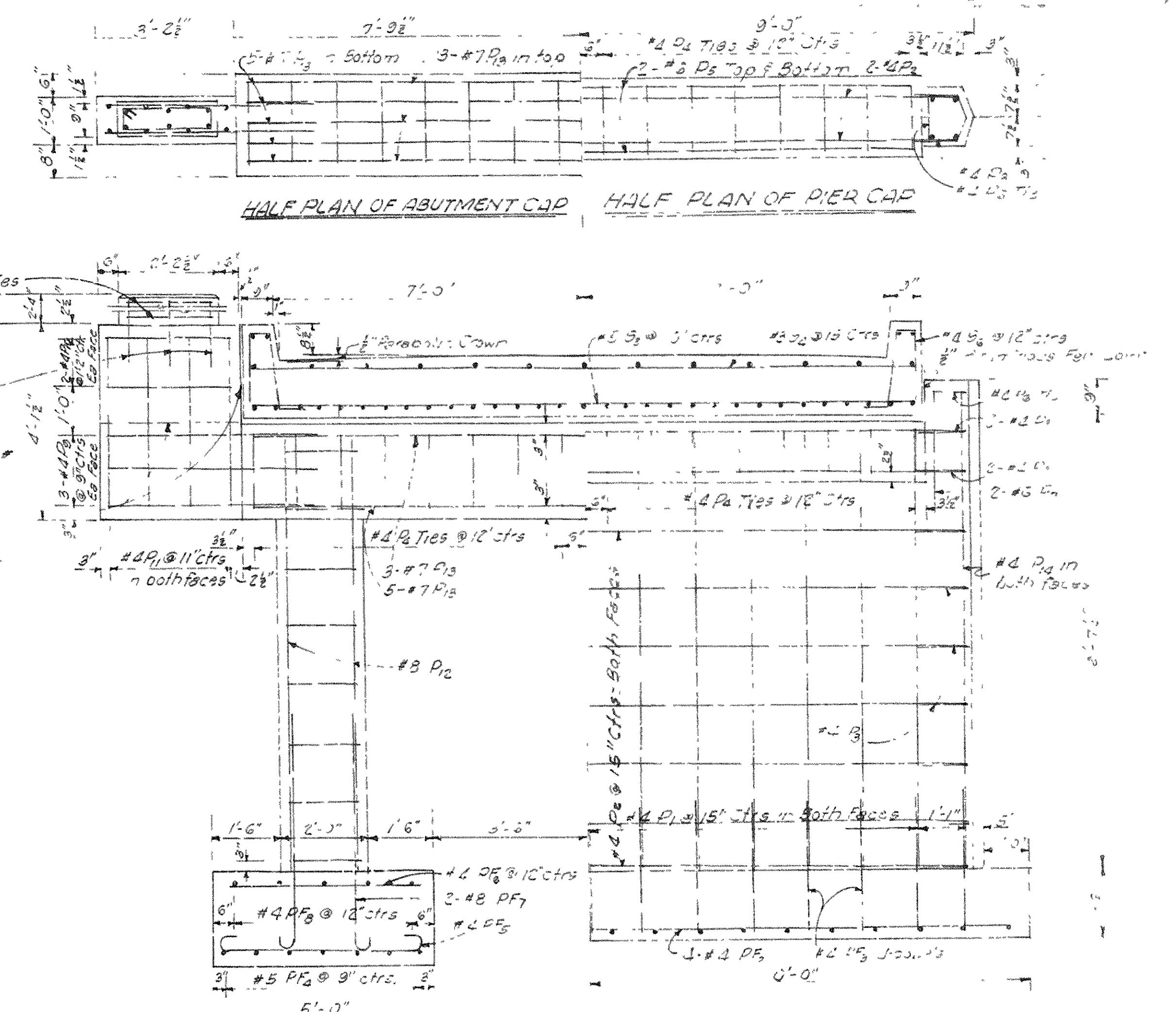
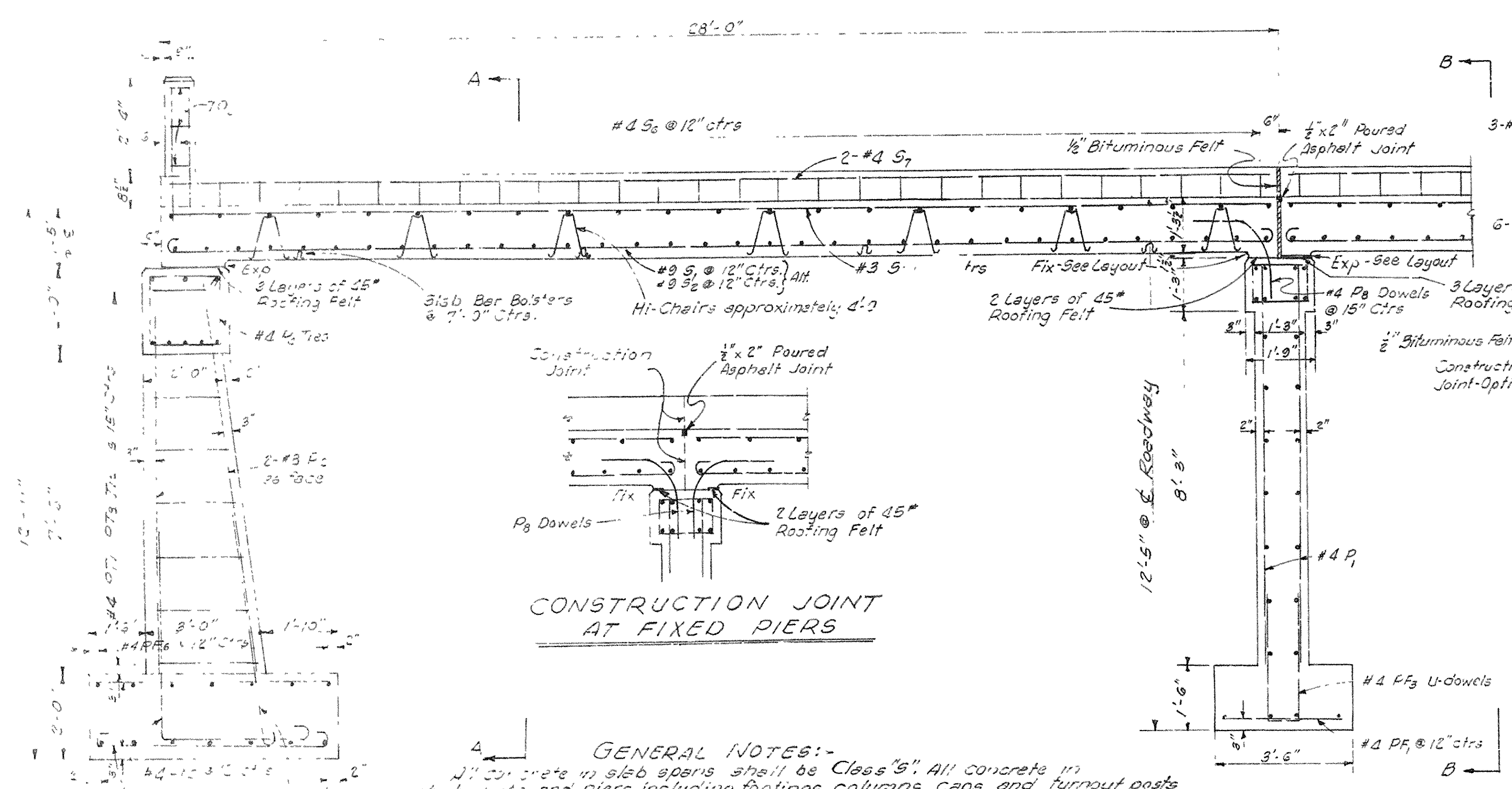
LAYOUT OF BRIDGE
OVER SPADRA CREEK
JOHNSON COUNTY
ROUTE SEC.

ARKANSAS STATE HIGHWAY COMMISSION

DRAWN BY MCH DATE 3-28
CHECKED BY DATE
BRIDGE NO. DRAWING NO. 105

BRIDGE DESIGN ENGINEER

S-1099
C-36-5



CONSTRUCTION JOINT AT FIXED PIERS

HALF SECTION A-A
ABUTMENTS

HALF SECTION B-B
PIERS

GENERAL NOTES:-
All concrete in slab areas shall be Class "S". All concrete in substructure and piers, including footings, columns, caps and turnout posts shall be Class "A" and shall be poured in the dry. Exposed corners shall be chamfered "3/4" unless otherwise noted.
Reinforcing steel shall be deformed bars of intermediate grade, unless otherwise modified by special provisions. All reinforcing steel shall be accurately located in the forms and firmly held in place by steel wire supports of sufficient size and number to prevent displacement of the reinforcing during construction. Wire supports will not be paid for directly, but will be considered subsidiary to the item of Reinforcing Steel. Shop lists and bending diagrams of reinforcing steel including wire supports must be submitted and approval secured before fabrication is begun.
In general, construction joints in abutments and piers shall be horizontal and shall be provided with keys not less than 2" high covering the middle third of both dimensions.
Bituminous felt, roofing felt and poured asphalt joints shall be measured as paid for as Class "S" concrete.
SPECIFICATIONS: Arkansas State Highway Commission Standard Specifications for Road and Bridge Construction, adopted March, 1940.

BAR LIST

MARK	SIZE	NO. REQUIRED	ABUTMENT	PIER	SLAB	LENGTH	A	B	PIN DIA.
PF ₁	#4	20				3'-2"			Str.
PF ₂	#4	4				19'-6"			Str.
PF ₃	#4	15				6'-10"	2'-11 1/2"	11"	1 1/2"
P ₁	#4	26				9'-3"			
P ₂	#4	13				17'-4"			
P ₃	#4	4				10'-8"			
P ₄	#4	18				2'-11"	1'-0"	5 1/2"	1 1/2"
P ₅	#4	16				5'-5"	1'-5"	11"	1 1/2"
P ₆	#4	15				7'-7"	1'-9 1/2"	1'-7 1/2"	1 1/2"
P ₇	#6	4				15'-0"			Str.
P ₈	#4	2				3'-8 1/2"			1 1/2"
P ₉	#6	4				3'-0"			Str.
P ₁₀	#4	13				3'-0"			
PF ₄	#5	14				7'-6"	5'-0"	6"	
PF ₅	#4	14				5'-8"	2'-8"	6"	
PF ₆	#4	14				4'-6"			Str.
PF ₇	#8	4				6'-1"	5'-1"	8"	Str.

* With one Fixed and one Expansion Joint. Add 13 for Fix-Fix Joint

BENDING DIAGRAMS

DETAILS OF ABUTMENTS, PIERS & SLABS
BRIDGE OVER SPADRA CREEK
JOHNSON COUNTY

ROUTE SEC.
ARKANSAS STATE HIGHWAY COMMISSION
LITTLE ROCK, ARK.
DRAWN BY: M.C.H. DATE: 1-8-58
TRACED BY: DATE: SCALE: 1/2" = 1'-0"
CHECKED BY: DATE: BRIDGE NO. DRAWING NO. 2-3

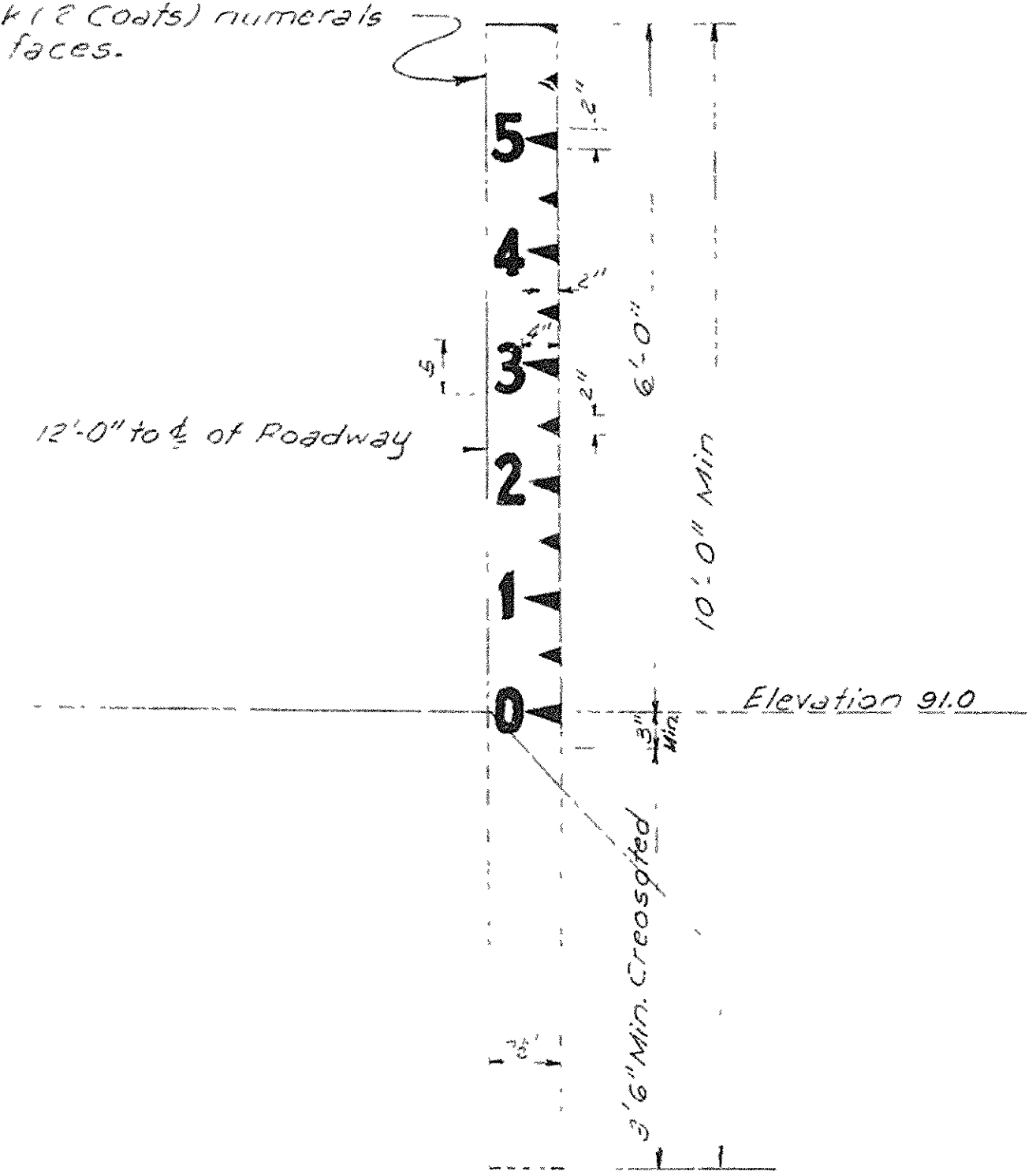
BRIDGE DESIGN ENGINEER

5-1039(1)
C-36-5 2 11

SUMMARY OF BRIDGE QUANTITIES

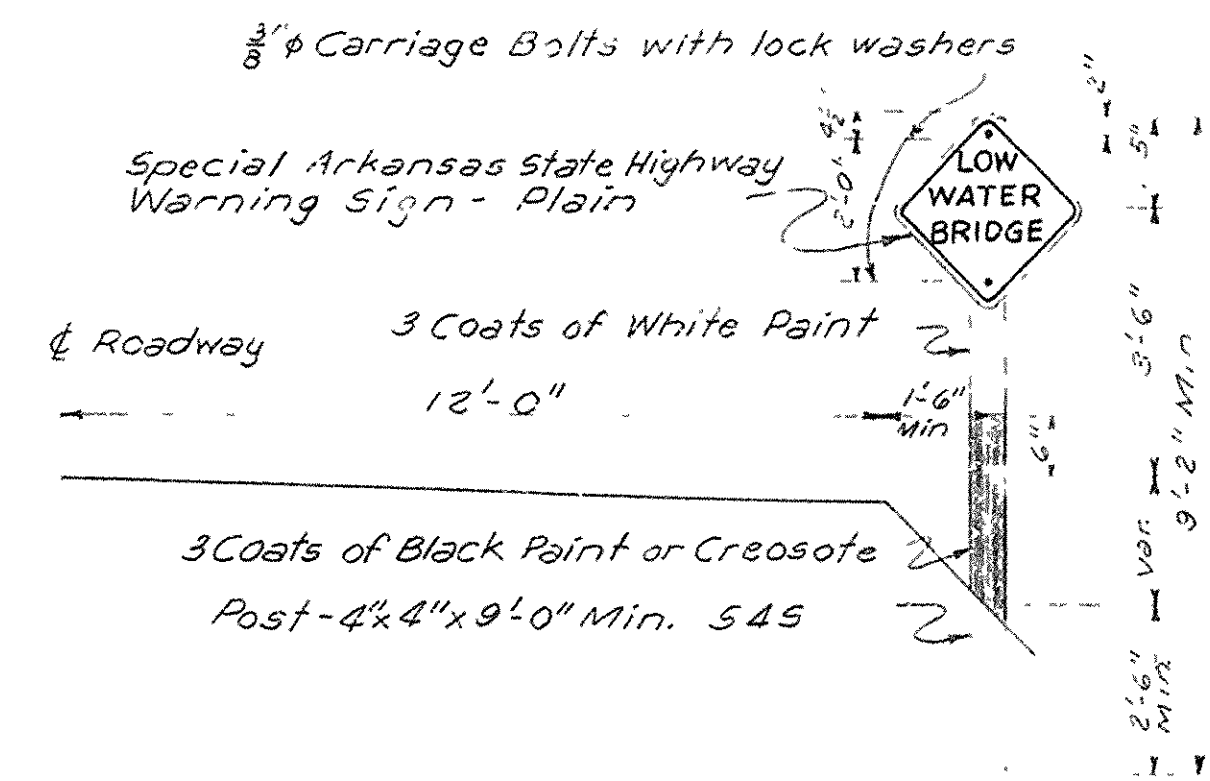
CODE NO.	ITEM NO.	ITEM	SP-801-2	SP-801-2	SP-801-2	SP-802	SP-802	SP-803
			DRY	WET	SOLID ROCK	CLASS "A"	CLASS "S"	REINFORCING
1020		UNIT OF BRIDGE	EXCAVATION FOR STRUCTURES	EXCAVATION FOR STRUCTURES	EXCAVATION FOR STRUCTURES	CONCRETE FOR BRIDGES	CONCRETE FOR BRIDGES	STEEL
			CU. YD.	CU. YD.	CU. YD.	CU. YD.	CU. YD.	LB.
		ABUTMENTS NO. 1 & 2	93		9	22.5		2389
		PIERS NO 1-4 INCLUSIVE	54	33	11	48.2		3283
		5 28'-0" P.C. SLAB SPANS					108.7	20,270
		TOTALS FOR JOB NO C-36-5	147	33	20	70.7	108.7	25,942

6"x8"x10'-0" Min. 5-d 5 Painted White (3 Coats) background with Black (2 Coats) numerals and points on both faces.



WATER LEVEL GAUGE

NOTE: To be paid for as a "Warning Sign."



LATERAL & VERTICAL SPACING OF WARNING SIGNS

NOTE: The Low Water Bridge Warning Signs shall be made of 16 Ga. sheet steel, being 24"x24" with 1 1/2" rounded corners. The sign shall be painted with a Federal Yellow background and embossed black letters 4" high and border 1/2" wide. The margin shall be 3/8". Paints for posts and gauge shall meet requirements of Section 925 of Standard Specifications for Road and Bridge Construction.

SCHEDULE OF BRIDGE QUANTITIES & DETAILS OF SIGNS - SPADRA CREEK BRIDGE JOHNSON COUNTY

ROUTE SEC.
ARKANSAS STATE HIGHWAY COMMISSION
LITTLE ROCK, ARK.
DRAWN BY: M.C.H. DATE: 1-2-58
TRACED BY: DATE: SCALE:
CHECKED BY: DATE:
BRIDGE NO. 44F DRAWING NO. 4011

BRIDGE DESIGN ENGINEER