

Bent 1
1.6'
1.6'

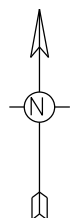
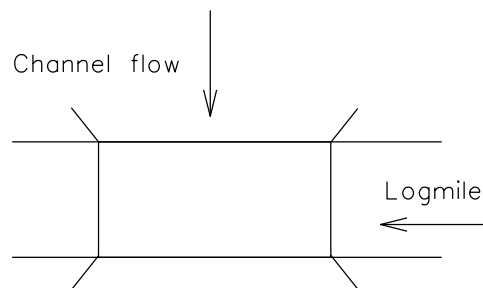
Mid
7.9'
6.6'

Bent 2
8.3'
8.5'

Mid
5.4'
5.1'

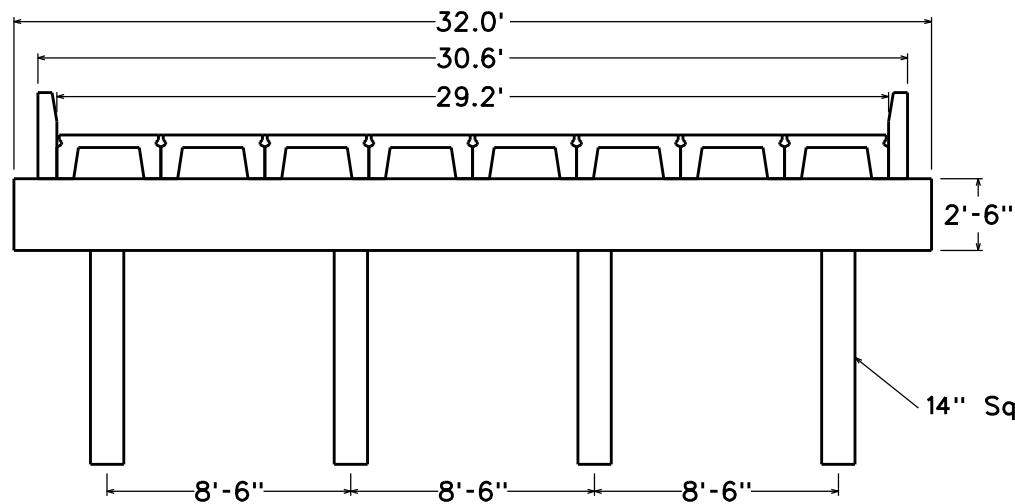
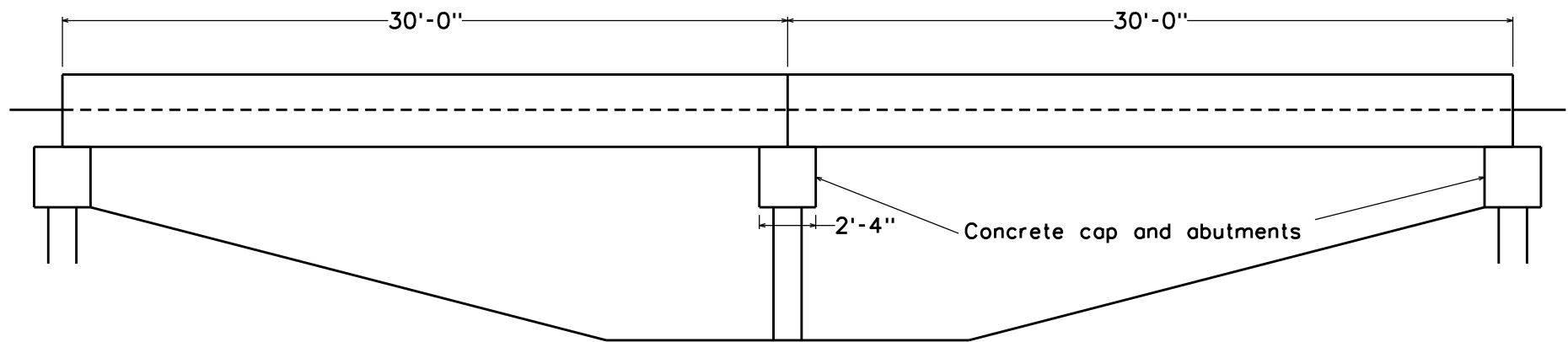
Bent 3
0.4'
1.6'

Channel profiled from top of deck on Lt side (down stream side)
Green soundings taken on 8/5/2019
Orange soundings taken on 8/7/2023

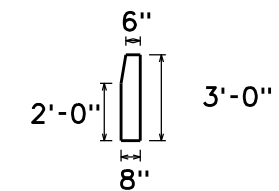
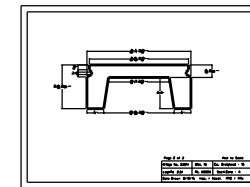


*Not to Scale

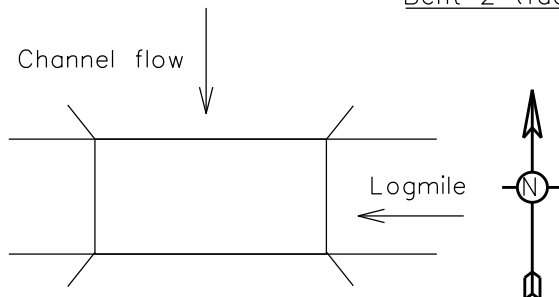
Bridge No. 23814	Dist. 10	Co. Craighead - 16
Logmile 2.51	Rt. 874	Sect/Zone - A
Date Drawn 8/7/23	Insp. / Assist.	BDS / CCP



Bent 2 (facing ahead)



Precast curb unit



* Units are bolted together transversely.

Page 1 of 2

*Not to Scale

Bridge No. 23814	Dist. 10	Co. Craighead - 16
Logmile 2.51	Rt. 874	Sect/Zone - A
Date Drawn 8/12/15	Insp. / Assist.	RRC / RRJ