

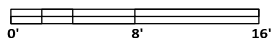
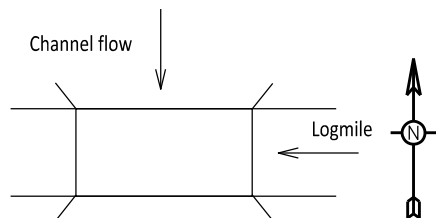
Channel profiled from top of deck on Lt side (downstream side)

Green line and soundings taken on 6/15/1999

Red line and soundings taken on 8/1/2016

Orange line and soundings taken on 5/19/2020

Pink soundings taken on 05/01/2024



Scale: 1"=8'

Inspection Dir: E to W

Channel Flow: N to S

BRIDGE NO.

22101

Logmile: 4.51

Route: CR 872

Date Drawn: 05/06/24

Insp. / Assist.: BDS / DJW

District: 10

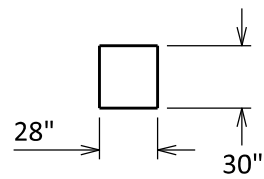
County: Craighead - 16

Sect/Zone: 00/A

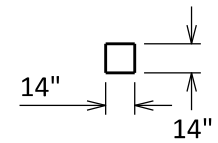


ARKANSAS STATE HIGHWAY COMMISSION
Little Rock, ARK.

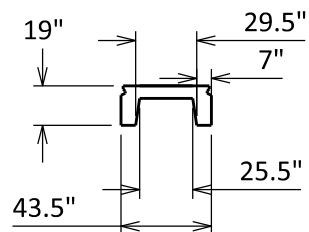
Concrete cap detail



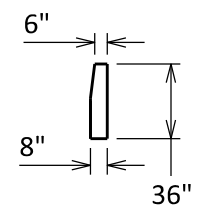
Concrete pile detail



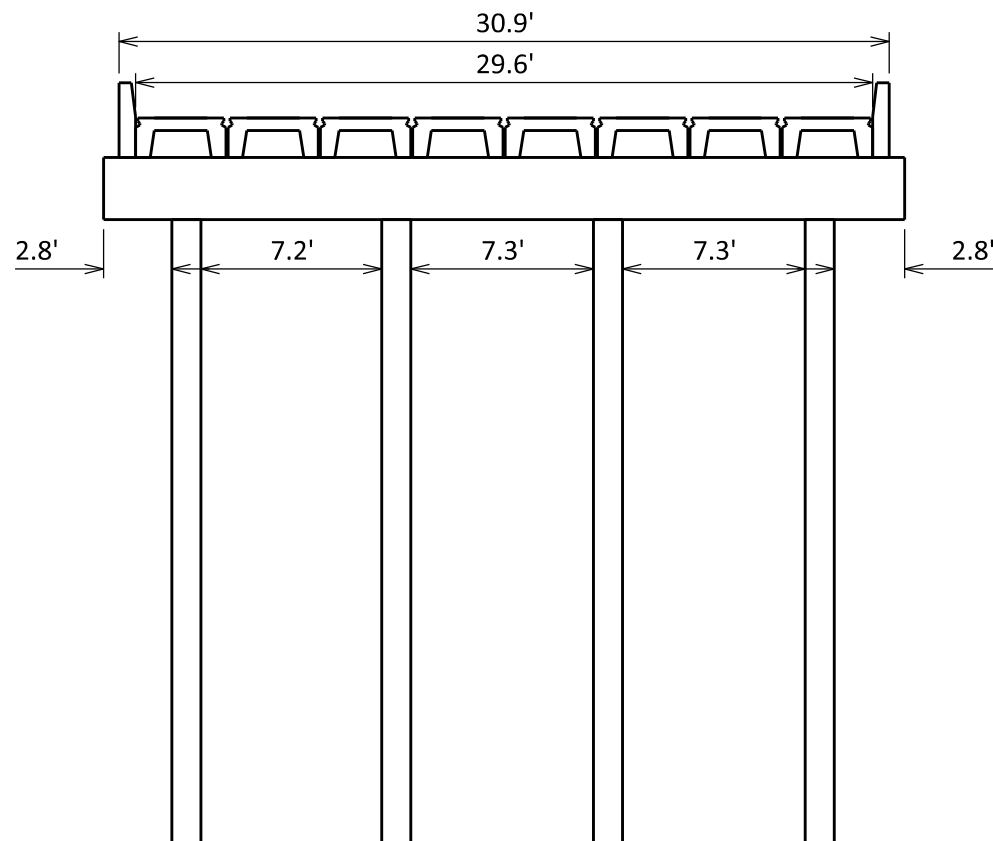
Interior Unit Details



Curb Details



Bent 2



BRIDGE NO.

22101

District: 10

County: Craighead - 16

Logmile: 4.51

Route: CR 872

Sect/Zone: 00/A

Date Drawn: 05/06/24

Insp. / Assist.: BDS / DJW



ARKANSAS STATE HIGHWAY COMMISSION
Little Rock, ARK.

Scale: 1"=5'

Inspection Dir: E to W

Channel Flow: N to S