

Energy and Environment Innovation for the Natural State

*Stronger Partnerships,
Better Outcomes*



01/ Why Plan for Energy & Environment Innovation?

...and How We Came to Plan Together

02/ Planning Process

03/ Outreach and Communication

04/ Winning Through Partnerships

05/ How Do You Spend \$100M?



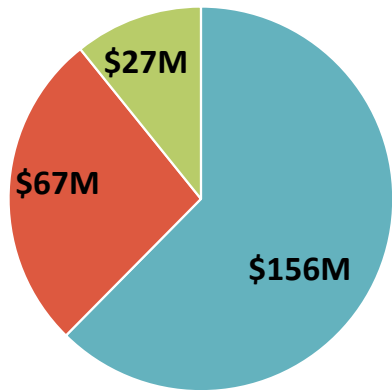
01/ Why Plan for Energy & Environment Innovation?

...and How We Came
to Plan Together



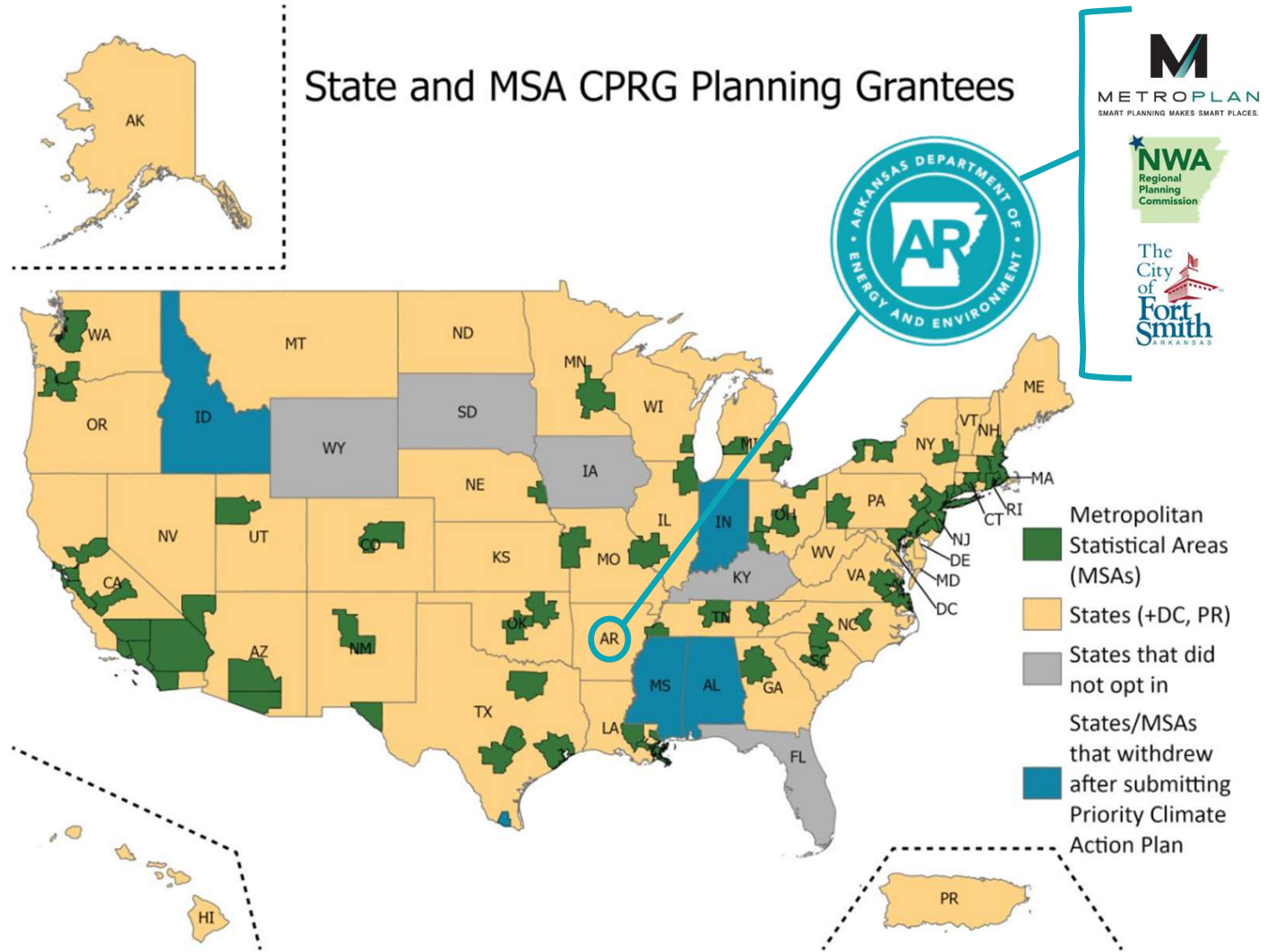


Funding Distribution (\$250 Million - Planning)



- States (\$3 mil each)
- Largest Metro Areas (\$1 mil each)
- Tribes/Territories

State and MSA CPRG Planning Grantees



Arkansas Investment Priorities



Facilitating Statewide Economic Growth and Competitiveness

Growing and expanding the economy within Arkansas by increasing access to economic opportunities for communities, advancing **transportation** and **commerce**, and maintaining a **resilient supply chain**.



Keeping Communities Safe

Improving public and **transportation safety** provisions through promoting road and highway **safety education** and training programs, strengthening **cybersecurity** infrastructure, and making safety improvements to roads and bridges.



Preparing the Infrastructure Workforce

Scaling up the workforce needed for project delivery, promoting access to **quality jobs**, and developing a **pipeline of talent** across the state.



Preservation and Promotion of The Natural State

Celebrating the State's natural resources to develop, create, and **sustain outdoor recreation**, business, and employment opportunities through **ecology initiatives**, **environmental resiliency projects**, and **proper water management practices**.



Creating a Portfolio of Reliable, Efficient, and Secure Energy Options

Expanding affordable and **efficient energy** options available to Arkansans through resource development while maintaining a strong **energy workforce** and **secure** electric power grid that can withstand emergencies and severe weather.

ENERGY & ENVIRONMENT INNOVATION PLAN COMPONENTS



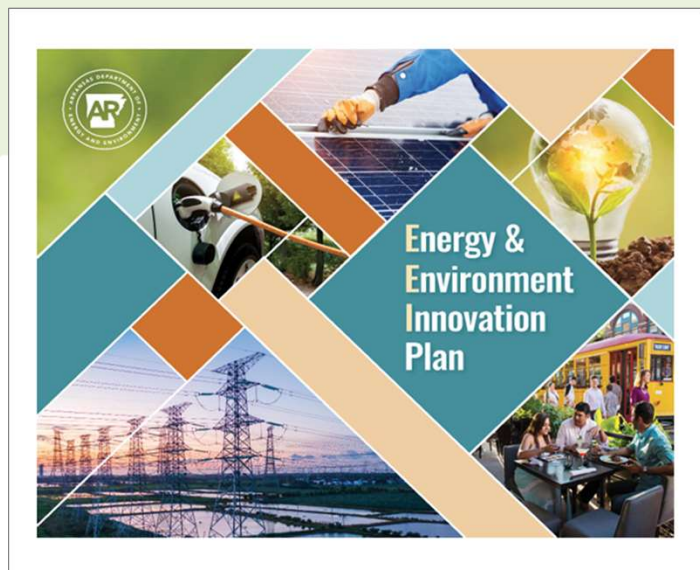
02/ Planning Process



Energy & Environment Innovation Planning Process

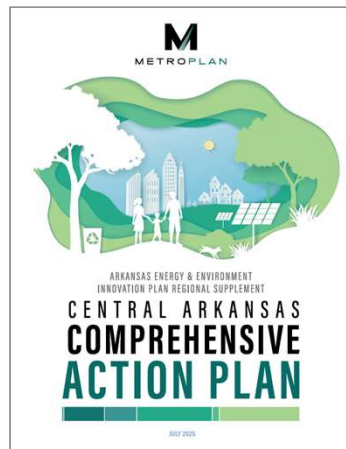
1

PRIORITY ACTION PLAN
SEPT 2023 – MAY 2024



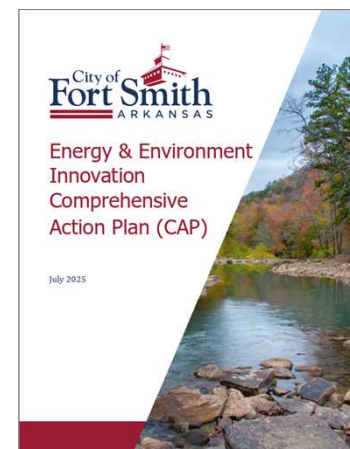
2

COMPREHENSIVE ACTION PLAN
APRIL 2024 – AUGUST 2025



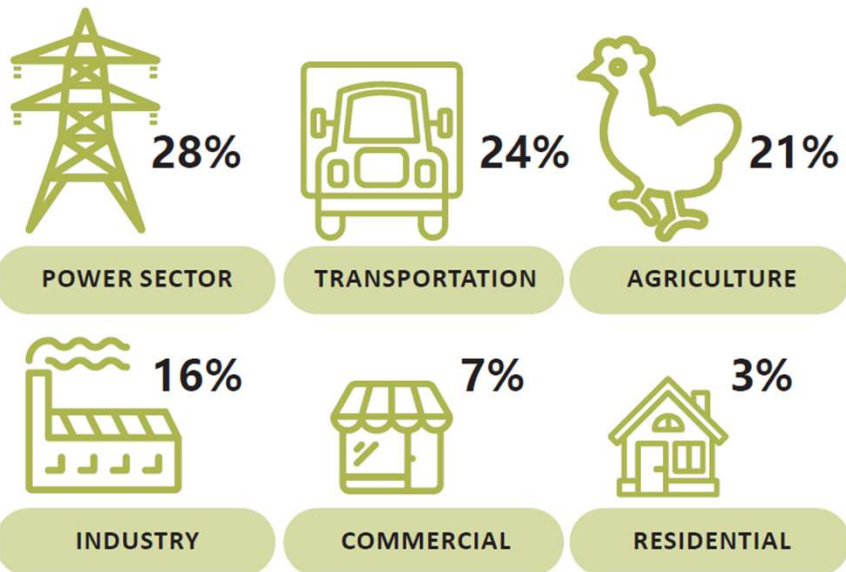
3

STATUS UPDATES
BEGINNING IN 2027



Arkansas GHG Emissions

- The power sector is currently the largest contributor to GHG Emissions in Arkansas.
- Carbon dioxide makes up 70% of Arkansas GHG emissions followed by methane (19%), nitrous oxides (10%), and fluorinated gases (3%).

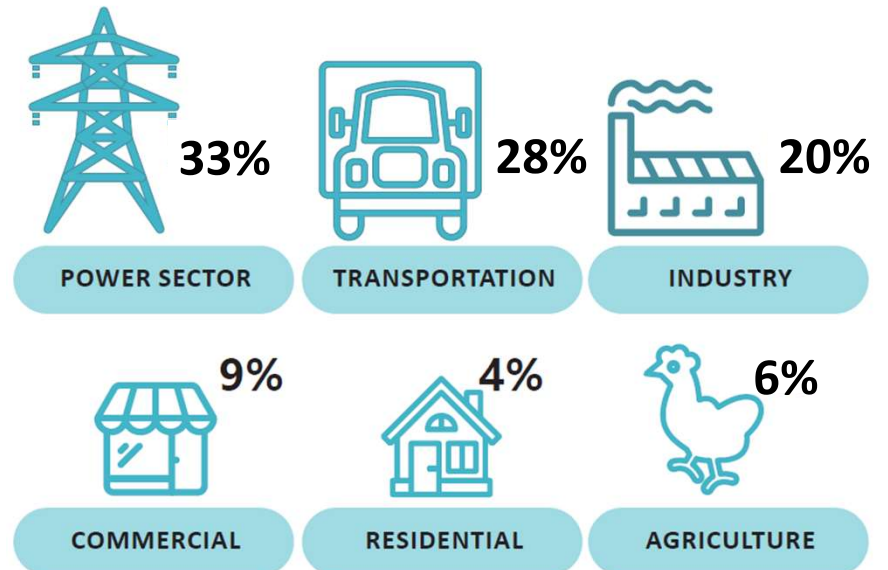


Arkansas Greenhouse Gas Emissions (CO₂e), 2020 obtained from U.S. EPA's Inventory of U.S. Greenhouse Gas Emissions and Sinks by State: 1990 - 2020

NWA GHG Emissions

(Benton, Madison, and Washington Counties)

- The power sector is currently the largest contributor to GHG Emissions in NWA.
- Agricultural emissions in NWA are at 2%



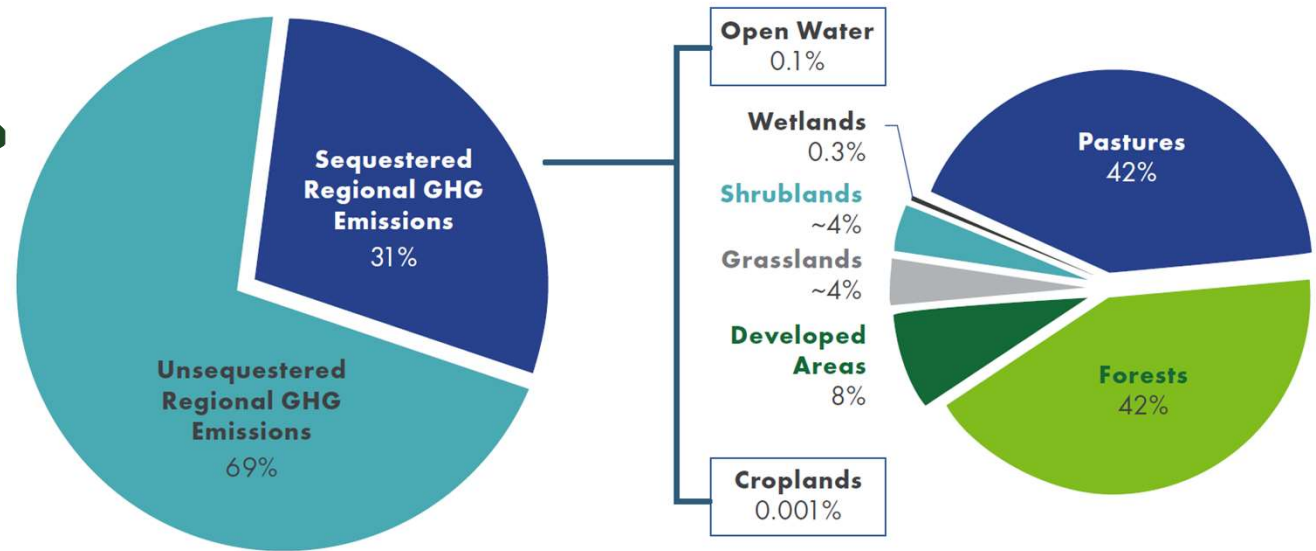
Approximated using State data and adjusted per agricultural percentage, based upon urban/rural area in NWA compared to State

Carbon Sinks In NWA

- **Forests** cover approx. **53%** (910,880 acres) of the land area in the MSA and account for approx. **42%** of regional carbon sequestration
- **31%** of the Regional GHG Emissions are being sequestered

► Opportunity for continued capture!

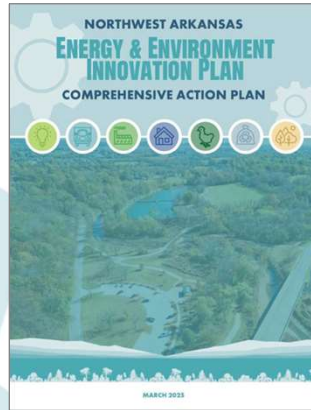
Carbon Sequestration of Land Cover Types in NWA



Planning for Local Priorities



**CONVENING AND
COLLABORATION**

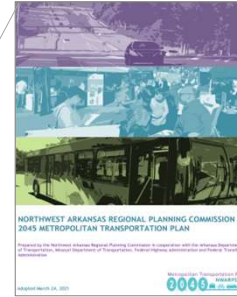


**FUNDING AND
IMPLEMENTATION**

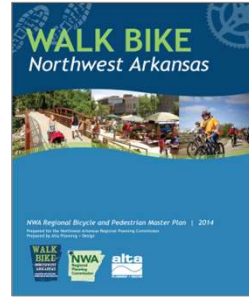


**VISION AND
SHARED GOALS**

NWARPC 2045 MTP



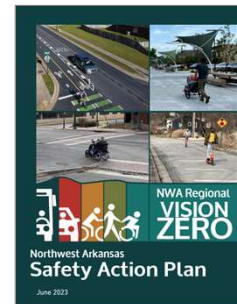
NWA Bicycle and Pedestrian Master Plan



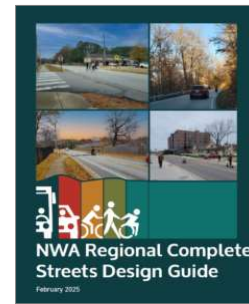
NWA Open Space Plan



NWA Vision Zero Plan



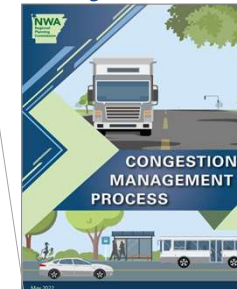
NWA Complete Streets Design Guide



Connect NWA



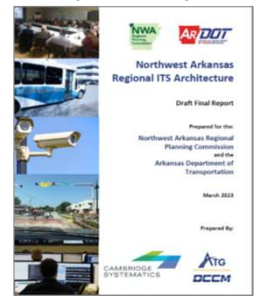
Congestion Management Process



NWA Transportation Systems Management and Operations



NWA Intelligent Transportation System



03/
Outreach &
Communication



Outreach for Public Input

- Statewide Survey
- Idea Box
- Open House & Public Input Meetings
- Meeting with local Stakeholder Organizations
- Social Media Campaigns

Energy & Environment Innovation Plan



Take the Survey



Fill Out the Idea Box



Attend an Open House

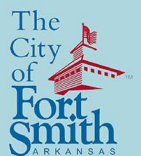
October 23 / 4:00 - 7:00 PM

*Carroll Electric Community Room
Huntsville, AR*

October 26 / 4:00 - 7:00 PM

*Jones Center, Room 226
Springdale, AR*

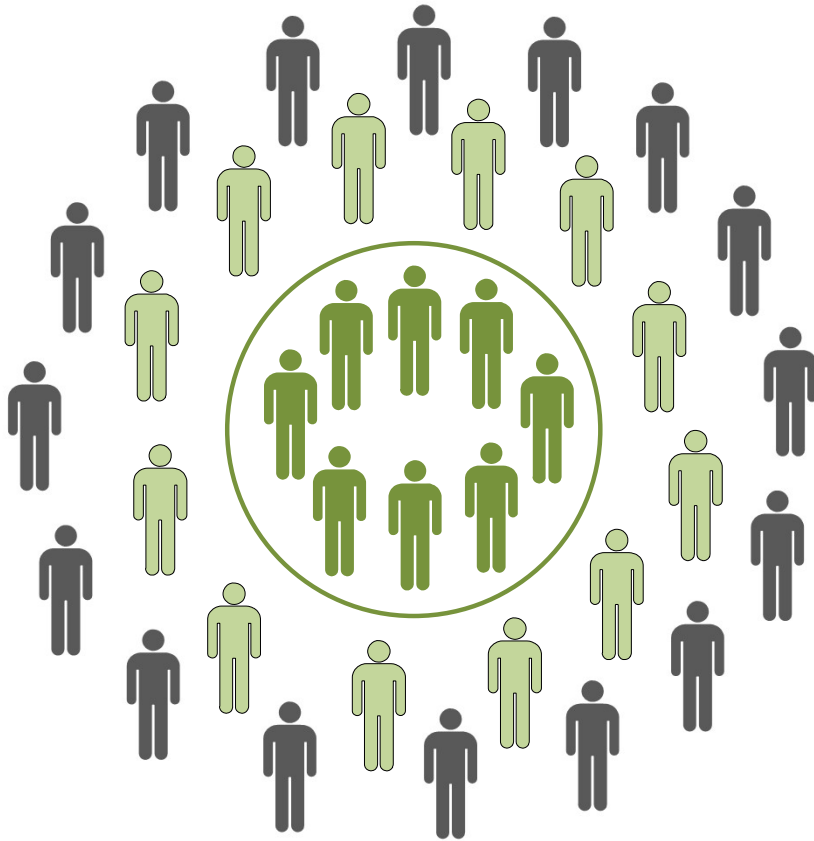
OUR PARTNERS



Public Meetings & Organization Workshops

- Inclusive Stakeholder Dialogues
- Interactive Q&A Sessions
- Tailored Workshop Agendas
- Feedback-Driven Planning





Messaging Strategies

1

Use Clear, Concise Language: Avoid jargon and make environmental concepts easy to understand.

2

Relatable Narratives: Share stories that resonate with each stakeholder (e.g., how pollution impacts health or economic growth).

3

Benefit-Driven Messaging: Emphasize benefits such as job creation, community health, and cost savings.

4

Leverage Data and Local Context: Use local statistics and real-world examples to highlight specific environmental impacts and economic benefits in their community.

Public Communication: Aligning Projects with Arkansas Investment Priorities

- The Coalition worked together to show how local projects support Arkansas' efficient energy, transportation safety, green networks, and resiliency goals.
- Public communication connected state priorities with everyday community benefits including safer streets, energy jobs, and secure energy.
- Residents saw how each project improves quality of life while protecting the Natural State for future generations.

Arkansas Investment Priorities



Facilitating Statewide Economic Growth and Competitiveness

Growing and expanding the economy within Arkansas by increasing access to economic opportunities for communities, advancing **transportation** and **commerce**, and maintaining a **resilient supply chain**.



Keeping Communities Safe

Improving public and **transportation safety** provisions through promoting road and highway **safety education** and training programs, strengthening **cybersecurity** infrastructure, and making safety improvements to roads and bridges.



Preparing the Infrastructure Workforce

Scaling up the workforce needed for project delivery, promoting access to **quality jobs**, and developing a **pipeline of talent** across the state.



Preservation and Promotion of The Natural State

Celebrating the State's natural resources to develop, create, and sustain **outdoor recreation, business, and employment** opportunities through ecology initiatives, environmental **resiliency** projects, and **proper water management practices**.



Creating a Portfolio of Reliable, Efficient, and Secure Energy Options

Expanding affordable and **efficient energy** options available to Arkansans through resource development while maintaining a strong **energy workforce** and **secure** electric power grid that can withstand emergencies and severe weather.

Communicating Project Selection: GHG Reduction and Competitiveness

- Public communication emphasized that projects were selected for measurable GHG reductions and readiness for implementation.
- Some community-priority projects were not competitive under EPA scoring if they lacked quantifiable emission reductions.
- Coalition communication used social media infographics and public meetings to explain how federal criteria shaped selections.
- Coalition projects such as EV charging, solar energy, efficiency upgrades, and trail networks provide clear, measurable GHG reductions.





Local Benefits Beyond GHG Reduction

- **Public Outreach:** Showed coalition projects create community and economic value statewide.
- **Community Enhancement:** Enhancing public spaces, connectivity, and overall livability.
- **Economic Opportunity:** Local jobs, small business growth, and workforce training, along with revenue generating projects.
- **Resident Support & Affordability:** Lower costs and energy access for all residents and local businesses.
- **Nature-Based Resilience:** Green networks, better storm drainage, and protected natural areas.

Continuous Communication

- State Conferences & Seminars
- Local Public Input & Review Meetings
- Non-Profit Organizations
- Chamber, Commission, and Board Meetings



Approaching it the Natural State way

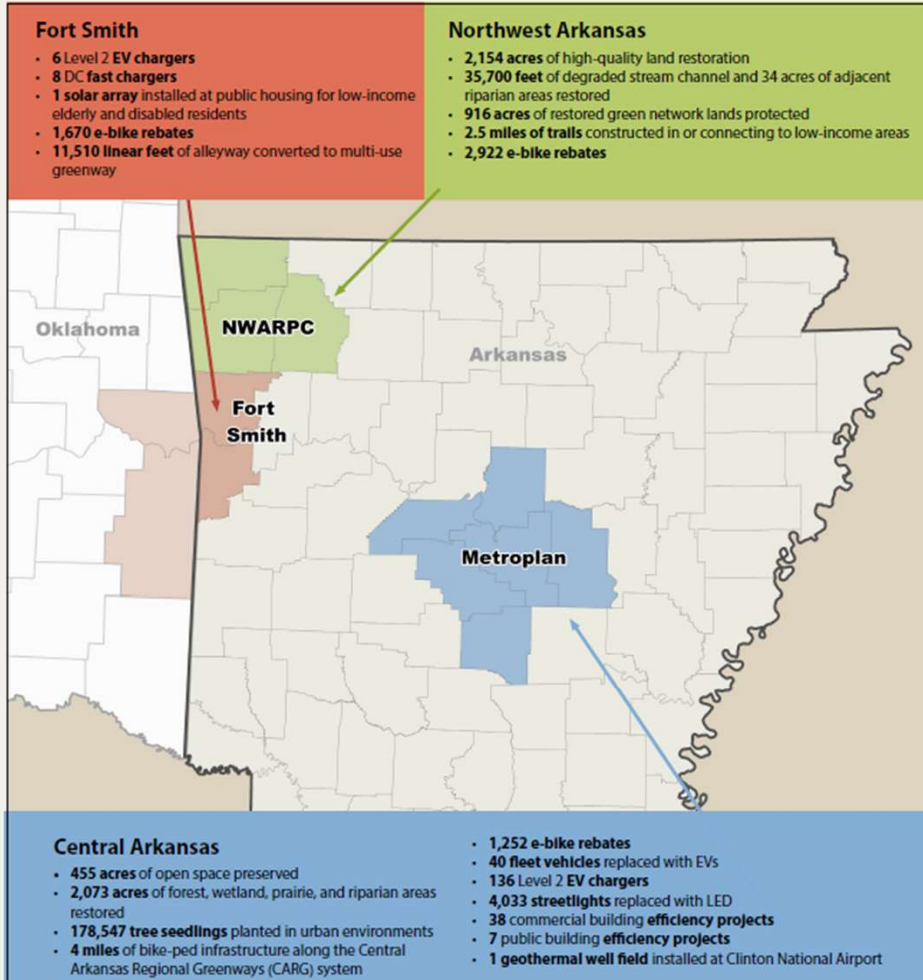
04/ Winning through Partnerships

or, how to punch above your weight



\$100 million

Transformative Impact



\$100 million

Transformative Impact

Preserving the Natural State

2025-2050:
261,782 metric tons CO₂e reduced or sequestered.

2025-2030:
1,071,188 metric tons CO₂e reduced or sequestered.



- Pollutant removal from urban stormwater runoff through streams and wetlands
- Biodiverse habitat and wildlife corridors
- Erosion, sediment and phosphorus reduction in urban streams
- Removal of invasive vegetation

A Natural State for All

- 50+ percent of benefits to low-income and disadvantaged communities
- Civic connectivity to streams and natural areas



- Reduction of urban heat islands through forest and stream restoration
- Multimodal connections for equitable access to services and clean transportation
- Energy security through transportation and building efficiency

Putting the Natural State to Work

- 120 Conservation Corps members trained through hands-on restoration and site maintenance
- 30 hands-on training workshops
- 70 pre-apprentices trained and placed in apprenticeships
- Over 100 new apprentices hired in energy efficiency, solar, land restoration, and related workforce needs
- "Conservation Action" technician and manager certification program with 1-year apprenticeships



- 450 participants in workforce and conservation action certification programs
- 500 participants in industry and career workforce events and introductory training programs
- 30 community engagement events conducted to engage communities, employers, and others in climate solutions and job opportunities in related fields



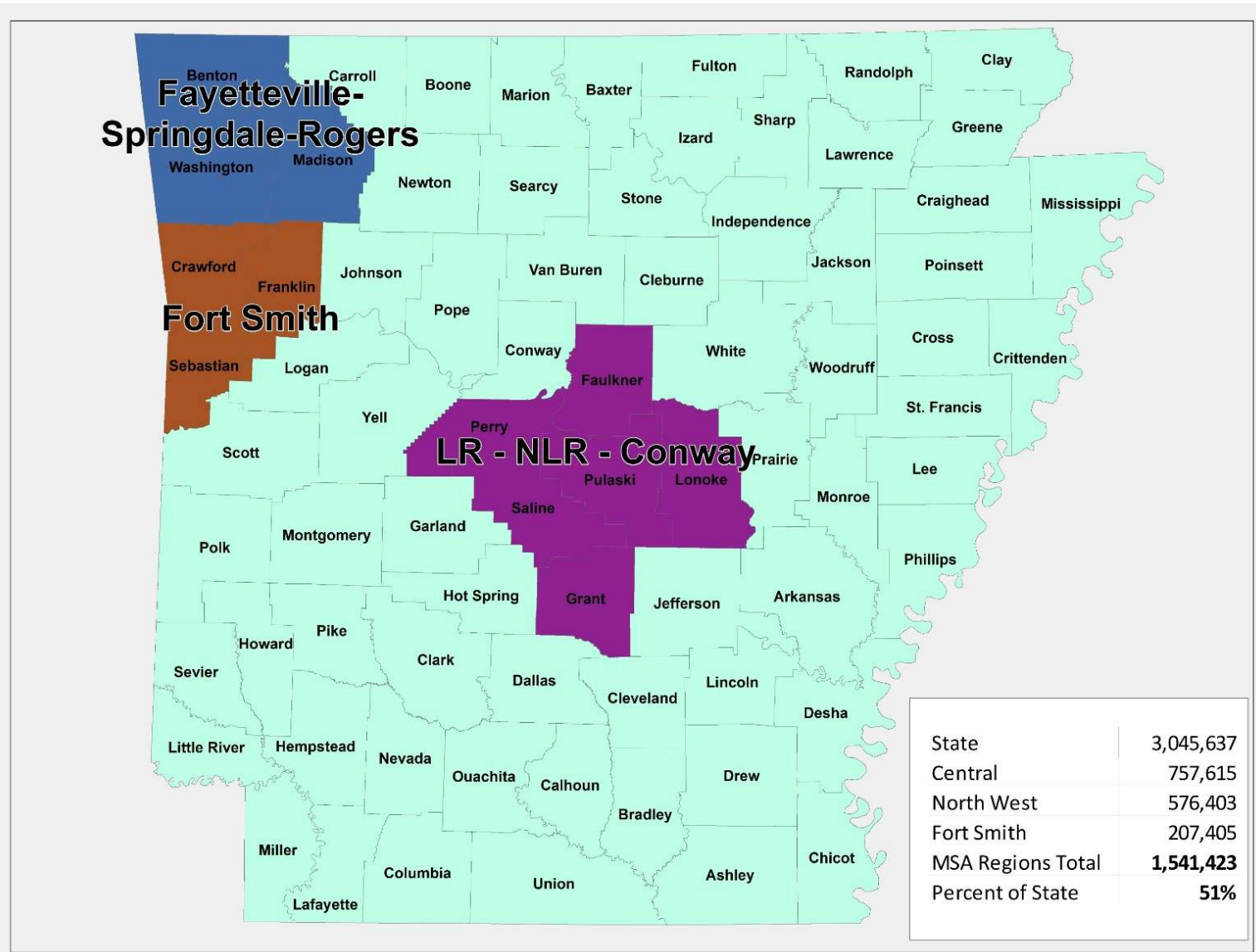
Secret to Success: The 4 Cs

1. Coalition
2. Compromise
3. Commitment to Teamwork
4. Consistent Reminders (*Constant Pestering*)

1. Coalition

3 MSAs
=
51% of state's
population

Source: 1-year 2022 ACS estimate



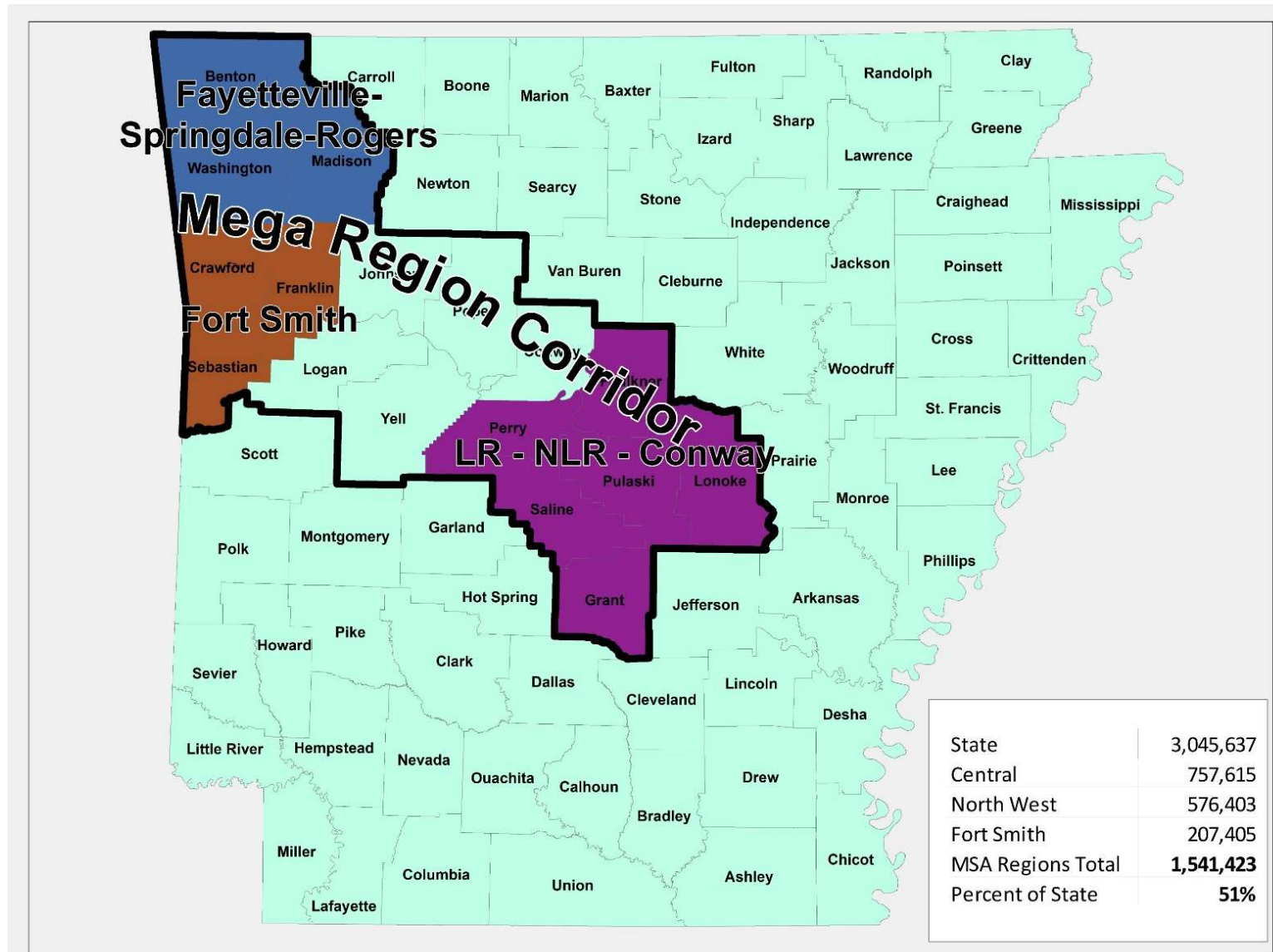
1. Coalition

Arkansas Mega Region

Maximum projected
population:
2.7 million by 2046.

Up to 70% of the
state's population.

Source: AEDI Arkansas Economic
Development Institute County
Population Projections



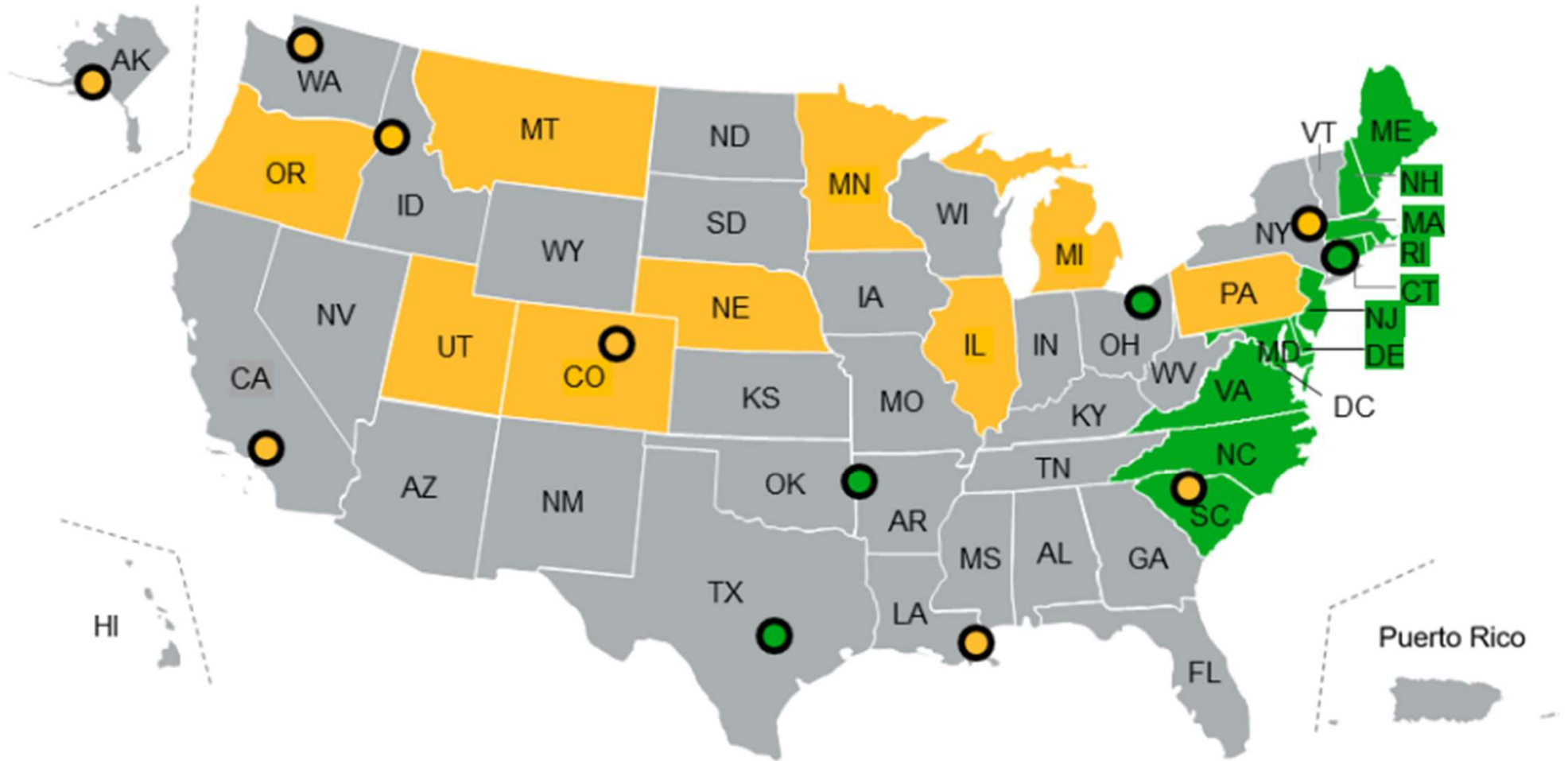
2. Compromise

Table 1: Grants Ranges and Funding by Tier

Tier	Grant Ranges	Funds Targeted for Each Tier	Anticipated Number of Grants to be Awarded
Tier A	\$200,000,000 – \$500,000,000	\$2 billion	4-10
Tier B	\$100,000,000 – \$199,999,999	\$1.3 billion	6-13
Tier C	\$50,000,000 – \$99,999,999	\$0.6 billion	6-12
Tier D	\$10,000,000 – \$49,999,999	\$0.3 billion	6-30
Tier E	\$2,000,000 – \$9,999,999	\$0.1 billion	10-50

Only 25 awards nationwide

Application Type: ■ Coalition ■ Individual ○ Local/Tribal



3. Coordination



I appreciate your dedication to implementing greenhouse gas reduction projects across Arkansas' three largest metro areas. We are eager to participate in the coalition's efforts to protect the Natural State and ensure environmental and economic benefits to over one half of Arkansas' population, including some of the state's most vulnerable residents.

Sincerely,


 George B. McGill, Mayor
 City of Fort Smith, AR

NOW THEREFORE, BE IT RESOLVED BY THE BOARD OF DIRECTORS OF THE NORTHWEST ARKANSAS REGIONAL PLANNING COMMISSION:

SECTION 1. That the Northwest Arkansas Regional Planning Commission supports the Arkansas Tri-Region Coalition Application to the Environmental Protection Agency (EPA) Climate Pollution Reduction Grant (CPRG) Implementation Program and hereby agrees to act as a coalition member.


4. Consistent Reminders


Fun Friday Fire Up

 Bernadette Rhodes

To ● 'think.circl@gmail.com'; ● 'ngibbs@nwarpc.org'; ● tconklin@nwarpc.org; ● 'jrobertson@fortsmithar.gov'; ● 'treece@gpsid.net'; ● 'stursky@gpsid.net'; ● 'Pnierengarten@fayetteville-ar.gov'; ● 'cmcnamara@fayetteville-ar.gov'; ● 'bblanke@entergy.com'; ● 'formica@watershedconservation.org'; ● 'karen.mccurdy@craftontull.com'; ● 'april@ecoviabl.com'; ● Casey Covington; ● Sydney Dozier; ● jeff runder; ● Lennie Massanelli; ● John Landosky; ● 'wesley.prewett@banksouthern.com'; ● 'parker.higgs@entegritypartners.com'; ● 'afogleman@pulaskicounty.net'; ● 'markos.mylonas@entegritypartners.com'; ● Suzanne Peyton; ● Marsha Guffey; ● 'marshaguffey8402@comcast.net'; ● 'linda.smith@carwk.com'; ● 'ccook1@entergy.com';

Cc ● 'David Criswell'

 You replied to this message on 3/21/2024 4:45 PM.

 Implementation-Grant-Template-draft-updated-1_9_2024.docx
181 KB

Catchy subject line so everyone opens the email. :P

TODAY IS THE DAY to get your CPRG materials in!

Follow the attached template to match the format we are using for submission to EPA.
See the Progress Tracker for the detailed breakdown of all application materials with corresponding page in the NOFO:
[CPRG Tri-Region Application Spreadsheet.xlsx](#)

MATERIALS DUE TODAY

- Workplan
- Budget & budget narrative for subawards, consisting of just the two following categories:
 - 1) internal admin costs (cost associated with fulfilling responsibilities for managing the project, whether it is through your org directly or through contracts)
 - 2) participant support costs (purchasing/installing the project deliverables)
- Technical Appendix
- GHG Calculations Spreadsheet
- Bios
- Letters of Commitment (*if at all possible, or ASAP*)

UPCOMING DEADLINES

Thu, March 21	Metroplan to share compiled grant application package with all coalition partners.
Tue, March 26	DUE to Metroplan: Final revisions.
Wed, March 27	NWARPC Board meeting.
Thu, March 28	Metroplan to upload all attachments to grants.gov.
Fri, March 29	Metroplan to submit application via grants.gov.

4. Consistent Reminders

Fun Friday Fire Up

BR Bernadette Rhodes

To 'think.circl@gmail.com'; 'ngibbs@nwarpc.org'; 'tconklin@nwarpc.org'; 'jrobertson@fortsmithar.gov'; 'ttreece@gpsid.net'; 'stursky@gpsid.net'; 'Pnierengarten@fayetteville-ar.gov'; 'cmcnamara@fayetteville-ar.gov'; 'bblanke@entergy.com'; 'formica@watershedconservation.org'; 'karen.mccurdy@craftontull.com'; 'april@ecoviabl.com'; Casey Covington; Sydney Dozier; jeff runder; Lennie Massanelli; John Landosky; wesley.prewett@banksouthern.com; 'parker.higgs@entegritypartners.com'; 'afogleman@pulaskicounty.net'; 'markos.mylonas@entegritypartners.com'; Suzanne Peyton; 'marshaguffey8402@comcast.net'; 'linda.smith@carwk.com'; 'ccook1@entergy.com';

Cc 'David Criswell'

You replied to this message on 3/21/2024 4:45 PM.

Implementation-Grant-Template-draft-updated-1_9_2024.docx
181 KB

Catchy subject line so everyone opens the email. :P

TODAY IS THE DAY to get your CPRG materials in!

Follow the attached template to match the format we are using for
See the Progress Tracker for the detailed breakdown of all applicat
[CPRG Tri-Region Application Spreadsheet.xlsx](#)

MATERIALS DUE TODAY

- Workplan
- Budget & budget narrative for subawards, consisting of
 - o 1) internal admin costs (cost associated with full
 - o 2) participant support costs (purchasing/installin
- Technical Appendix
- GHG Calculations Spreadsheet
- Bios
- Letters of Commitment (if at all possible, or ASAP)

UPCOMING DEADLINES

Thu, March 21	Metroplan to share compiled grant applicatio
Tue, March 26	DUE to Metroplan: Final revisions.
Wed, March 27	NWARPC Board meeting.
Thu, March 28	Metroplan to upload all attachments to grants.gov.
Fri, March 29	Metroplan to submit application via grants.gov.

It's Thursday, and I'm Thirsty for Edits!

BR Bernadette Rhodes

To 'think.circl@gmail.com'; 'ngibbs@nwarpc.org'; 'cmcnamara@fayetteville-ar.gov'; 'formica@'; Lennie Massanelli; John Landosky; 'wesley.p'; 'markos.mylonas@entegritypartners.com'; Su

Cc 'David Criswell'; 'Meyer, Uta'; 'shubham.dat

You replied to this message on 3/25/2024 10:04 AM.

Cover_Metroplan.docx
95 KB

Workplan_Met
317 KB

05/ How to spend \$100,000,000...

... the Natural State way!

1. Protect infrastructure and property
2. Create transportation choices
3. Enhance economic development
with a focus on outdoor recreation
4. Protect the Natural State
5. Create jobs and develop workforce



How to Spend \$100 Million... to Save Millions

Priority	Project	Central Arkansas	Northwest Arkansas	Fort Smith
Green Networks	Land Protection	\$6,000,000	\$5,442,080	-
	Land Restoration	\$9,500,000	\$19,533,116	-
	Trail Construction	\$8,000,000	\$4,626,296	-
	Alleyway Rehab	-	-	\$5,150,000
	E-Bike Rebates	\$1,500,000	\$3,500,000	\$2,000,000
Transportation Efficiency	EV Fleet Transition	\$1,000,000	-	-
	EV Charging	\$995,000	-	\$3,250,000
	LED Streetlights	\$5,000,000	-	-
Building Efficiency	Grants for Public Buildings	\$3,500,000	-	-
	C-PACE Revolving Loans for Commercial Buildings	\$3,500,000	-	-
	Clinton Airport Geothermal	\$7,750,000	-	-
	Public Housing Solar Array	-	-	\$2,100,000
Administration & Support	Workforce Development	\$1,055,000	\$833,878	\$1,250,000
	Personnel/Grant Administration	\$1,450,000	\$2,314,630	\$750,000
Total	\$99,999,999	\$49,250,000	\$36,250,000	\$14,500,000

Protect infrastructure and property

Central Arkansas

Land Protection: \$6M

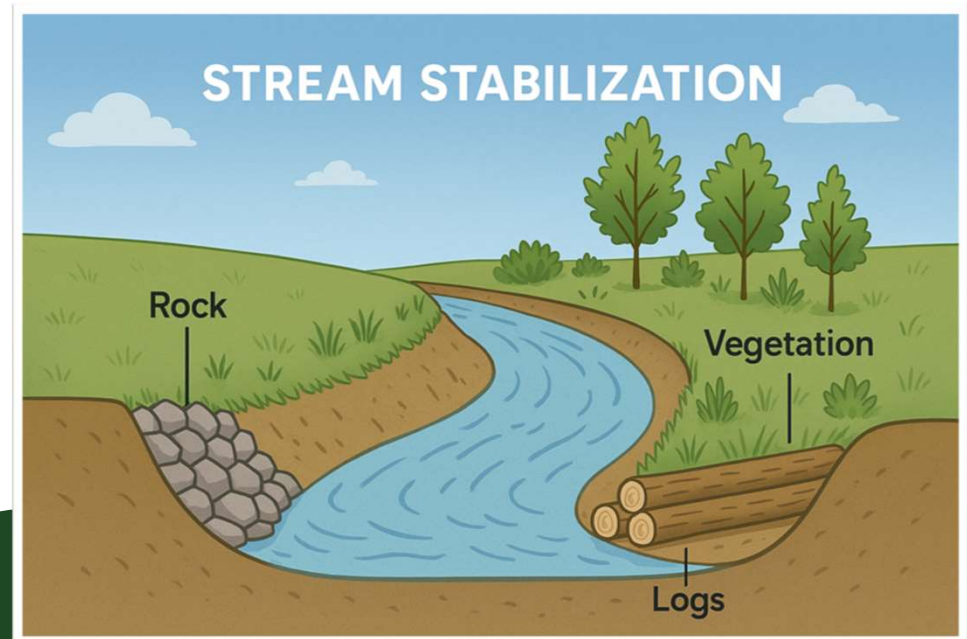
Land Restoration & Tree Planting: \$9.5M



Northwest Arkansas

Land Protection: \$5.4M

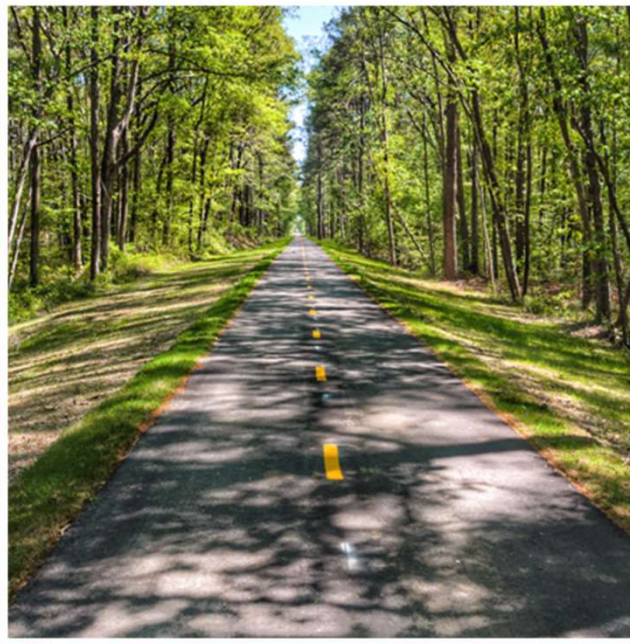
Land Restoration & Tree Planting: \$19.5M



Create transportation choices

Central Arkansas

Trails: \$8M
E-Bike Rebate: \$1.5M
EV Charging: \$1M
EV Fleet: \$1M



Northwest Arkansas

Trails: \$4.6M
E-Bike Rebate: \$3.5M



Fort Smith

Urban Paths: \$5.2M
E-Bike Rebate: \$2M
EV Charging: \$3.3M



Enhance economic development with a focus on outdoor recreation

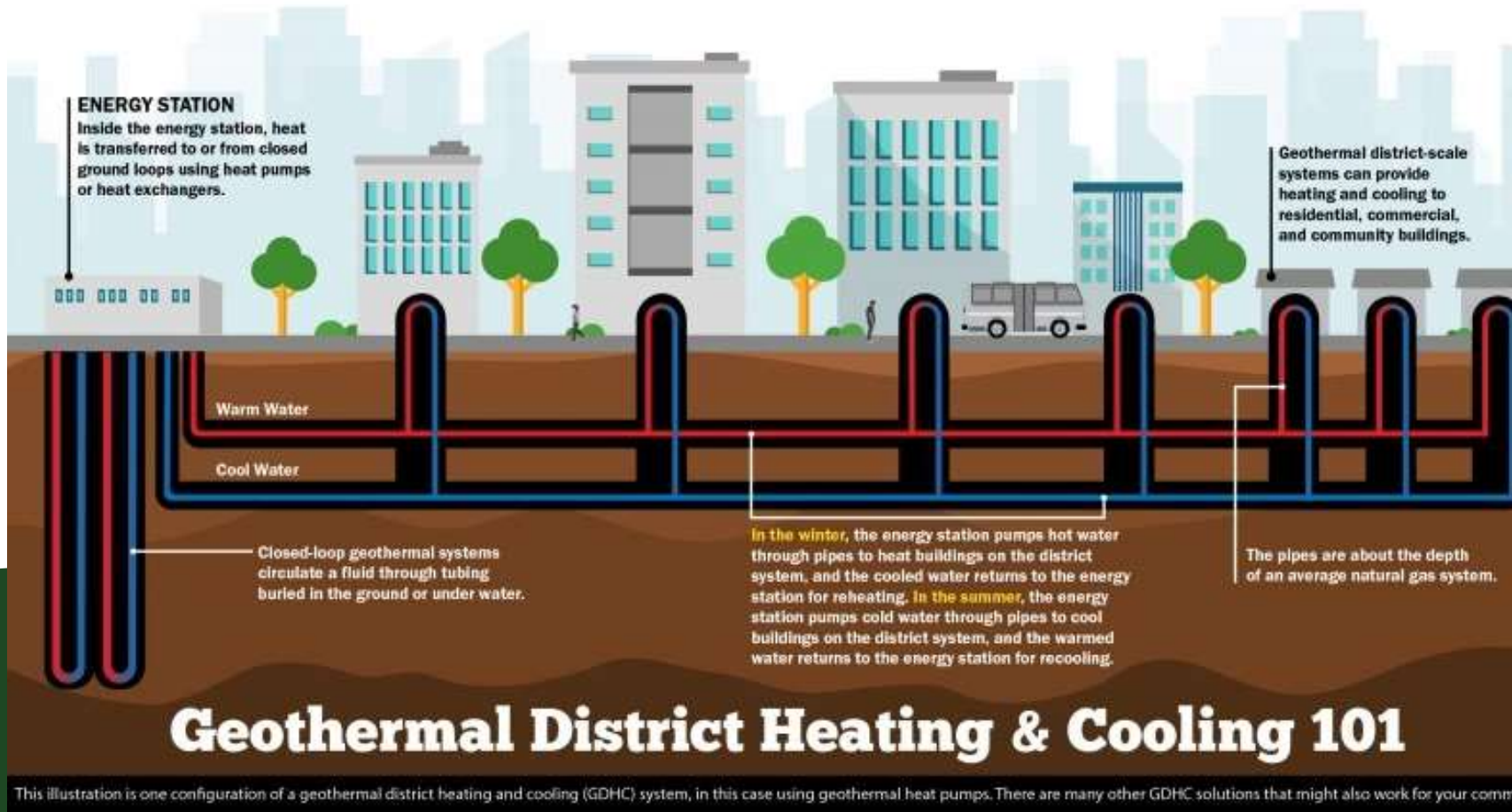


Protect the Natural State: Resilience



Protect the Natural State: Cost Savings

Central
Arkansas
LIT Geothermal:
\$7.75 M



Protect the Natural State: Cost Savings

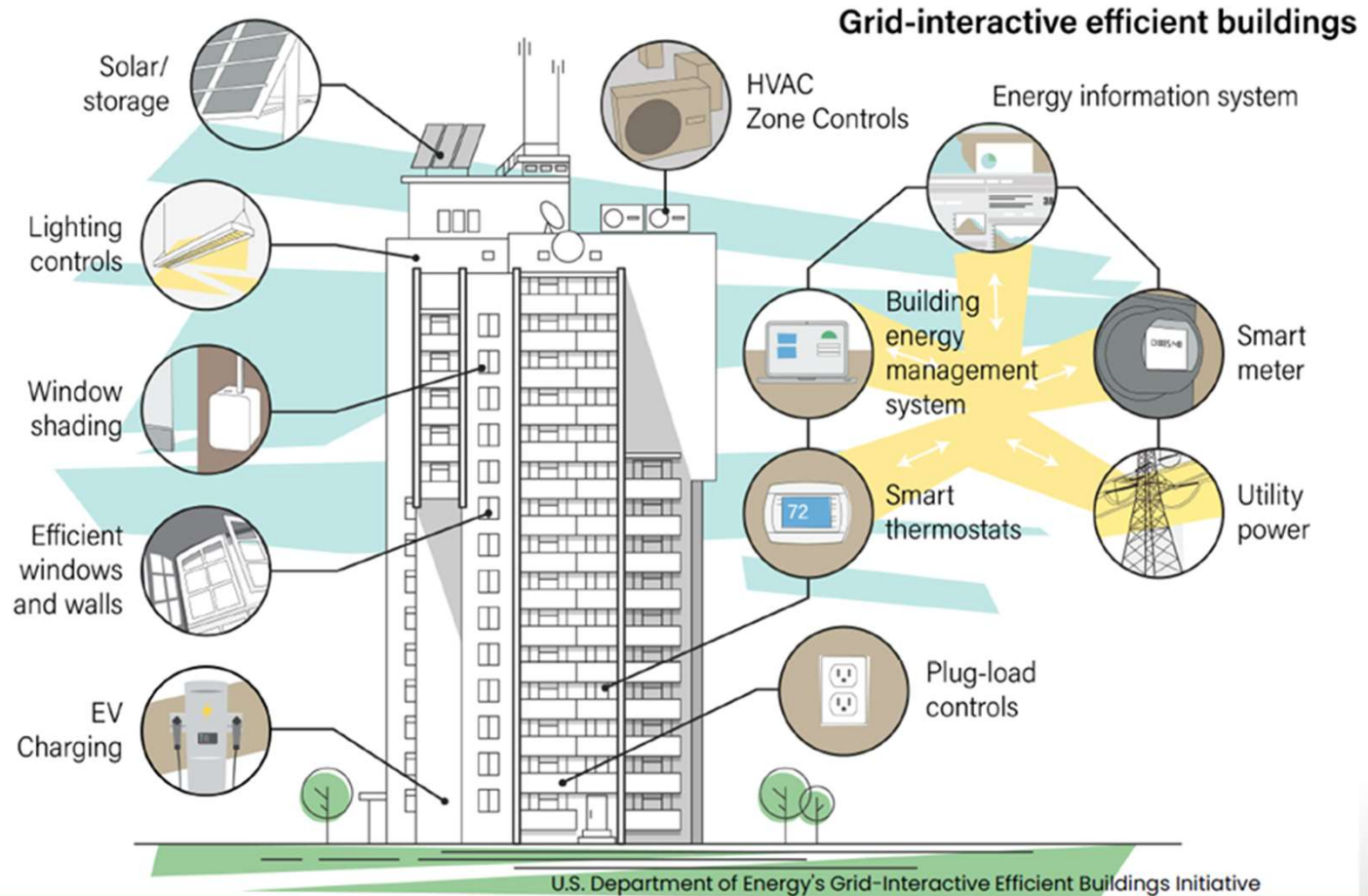
Central Arkansas

Public buildings: \$3.5M

Commercial buildings: \$3.5M

Fort Smith

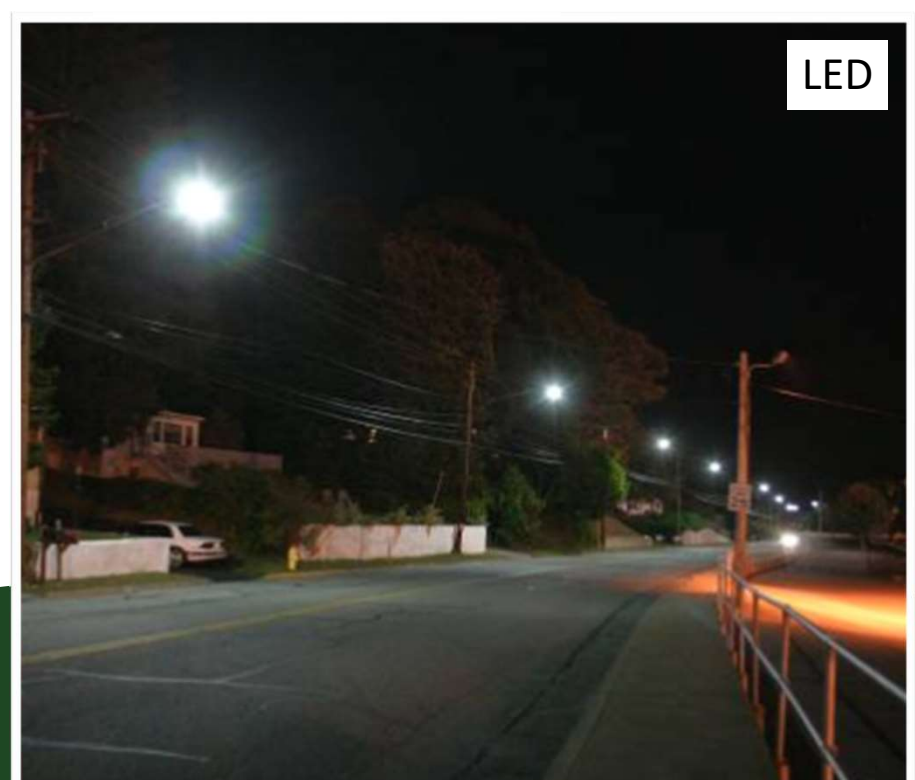
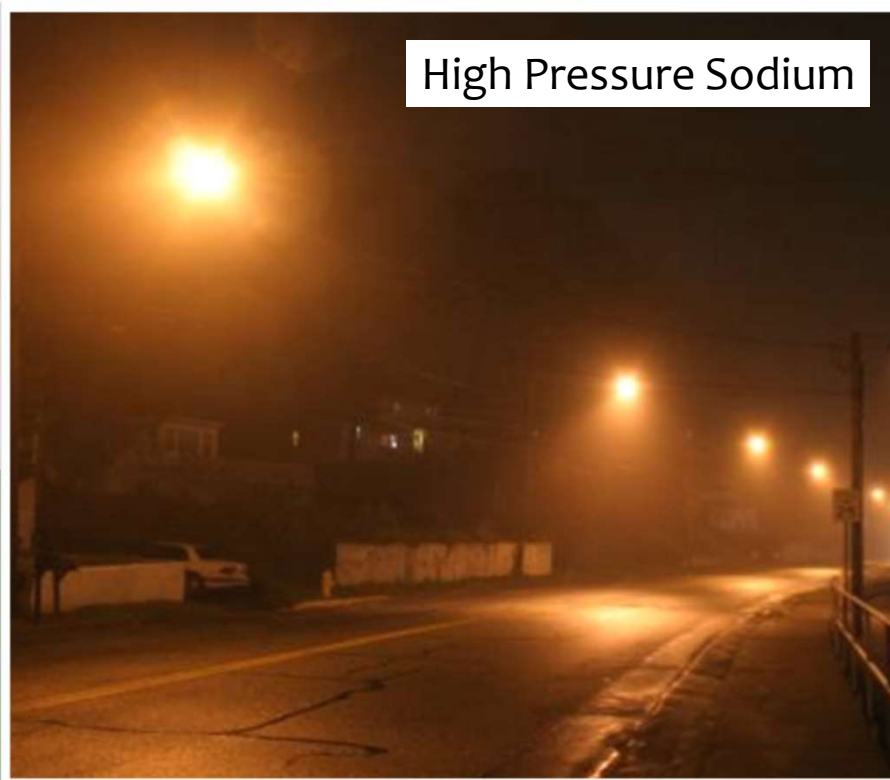
Solar array for low-income housing in Fort Smith: \$2.1M



Protect the Natural State: Safety

Central Arkansas

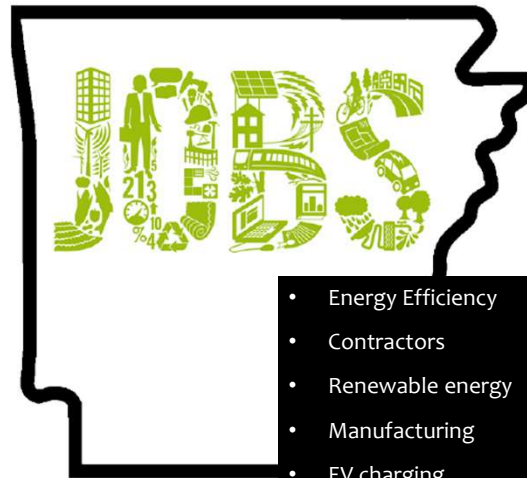
Streetlight conversion to LED: \$5M



Create jobs and develop workforce

Across 3 Regions

- 1 Grant Administrator
- 2 Energy Ambassadors
- 3 Workforce Development programs led by Arkansas Advanced Energy Foundation & Watershed Conservation Resource Center



- Energy Efficiency
- Contractors
- Renewable energy
- Manufacturing
- EV charging
- Sustainability
- Water
- Land
- Environmental

SkillStream



U.S. DEPARTMENT OF
ENERGY



The energy efficiency sector is **BOOMING**: with **75,000 new jobs** added and the strongest growth since 2018, energy efficiency outpaces **EVERY. OTHER. SECTOR!**



[ENERGY.GOV/USER](https://www.energy.gov/user)

Planning Never Stops...

Arkansas Investment Priorities



Facilitating Statewide Economic Growth and Competitiveness

Growing and expanding the economy within Arkansas by increasing access to economic opportunities for communities, advancing **transportation** and **commerce**, and maintaining a **resilient supply chain**.



Keeping Communities Safe

Improving public and **transportation safety** provisions through promoting road and highway **safety education** and training programs, strengthening **cybersecurity** infrastructure, and making safety improvements to roads and bridges.



Preparing the Infrastructure Workforce

Scaling up the workforce needed for project delivery, promoting access to **quality jobs**, and developing a **pipeline of talent** across the state.



Preservation and Promotion of The Natural State

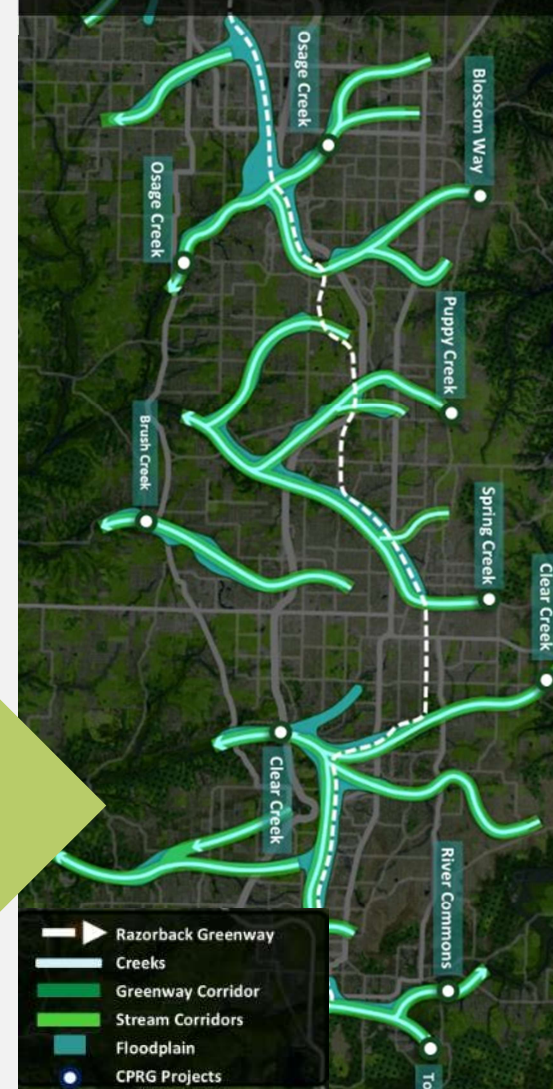
Celebrating the State's natural resources to develop, create, and sustain outdoor recreation, business, and employment opportunities through **ecology initiatives**, **environmental resiliency projects**, and **proper water management practices**.



Creating a Portfolio of Reliable, Efficient, and Secure Energy Options

Expanding affordable and **efficient energy** options available to Arkansans through resource development while maintaining a strong **energy workforce** and **secure** electric power grid that can withstand emergencies and severe weather.

NWA Blue-Green Network
(NWA Resilience Plan)



Thank You!



Tim Conklin
Executive Director
NWA Regional Planning Commission
tconklin@nwarpc.org



Bernadette Gunn Rhodes
Deputy Director
Metroplan
brhodes@metroplan.org



Joshua Robertson
Director of Sustainability & Citizen Services
City of Fort Smith
jrobertson@fortsmithar.gov



Leesa Freasier
Grant Administrator
Metroplan
lfreasier@metroplan.org