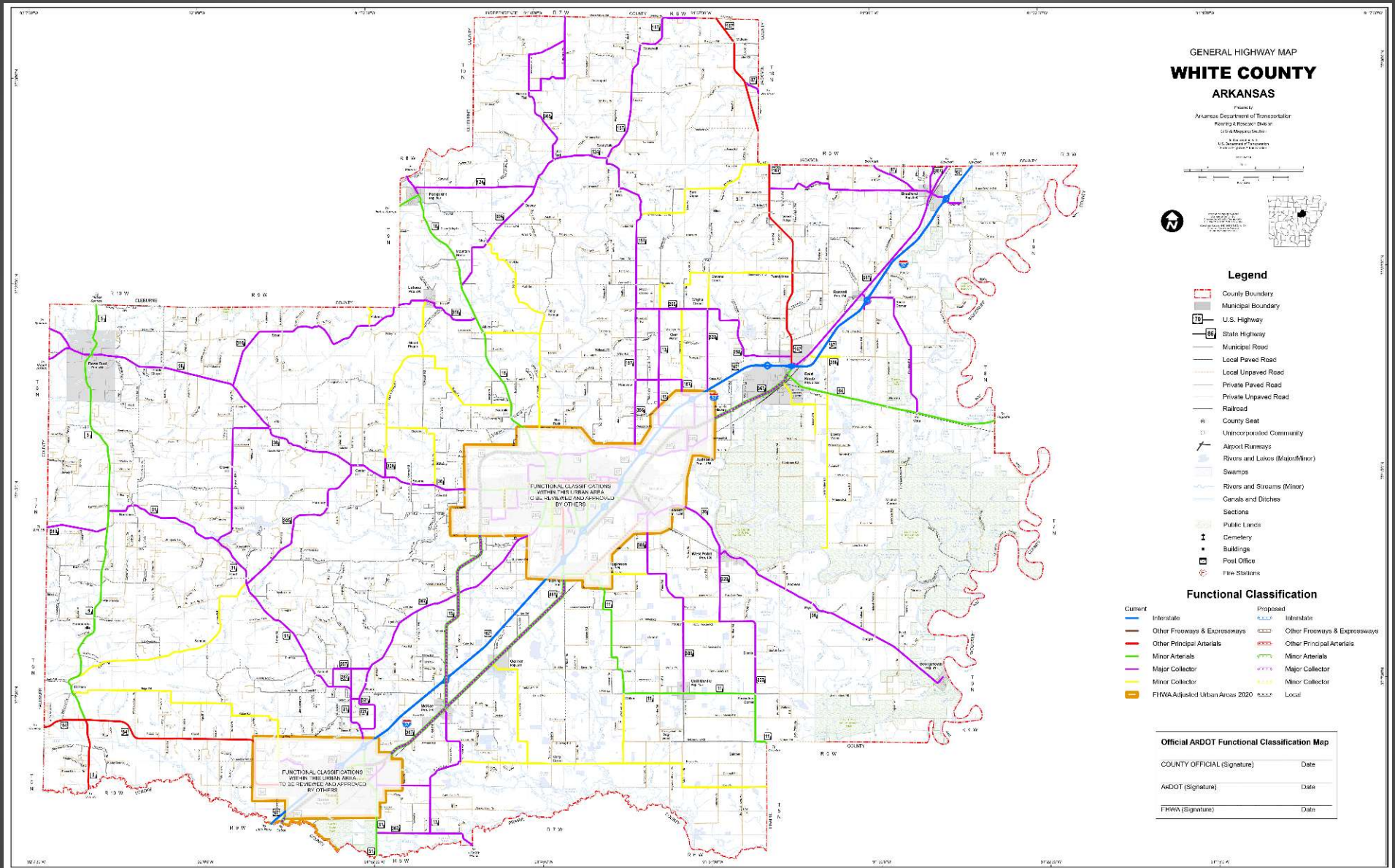
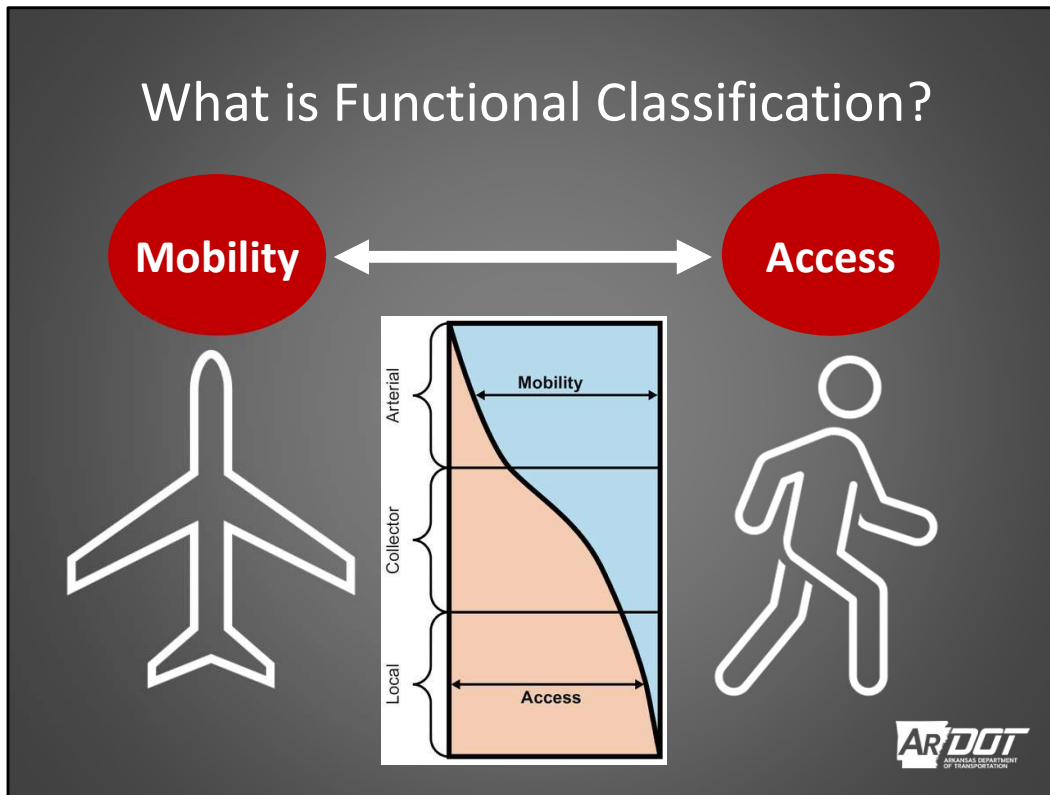


Decennial Functional Class Update





Roadways serve two primary travel needs: access to/egress from specific locations and travel mobility. While these two functions lie at opposite ends of the continuum of roadway function, most roads provide some combination of each.

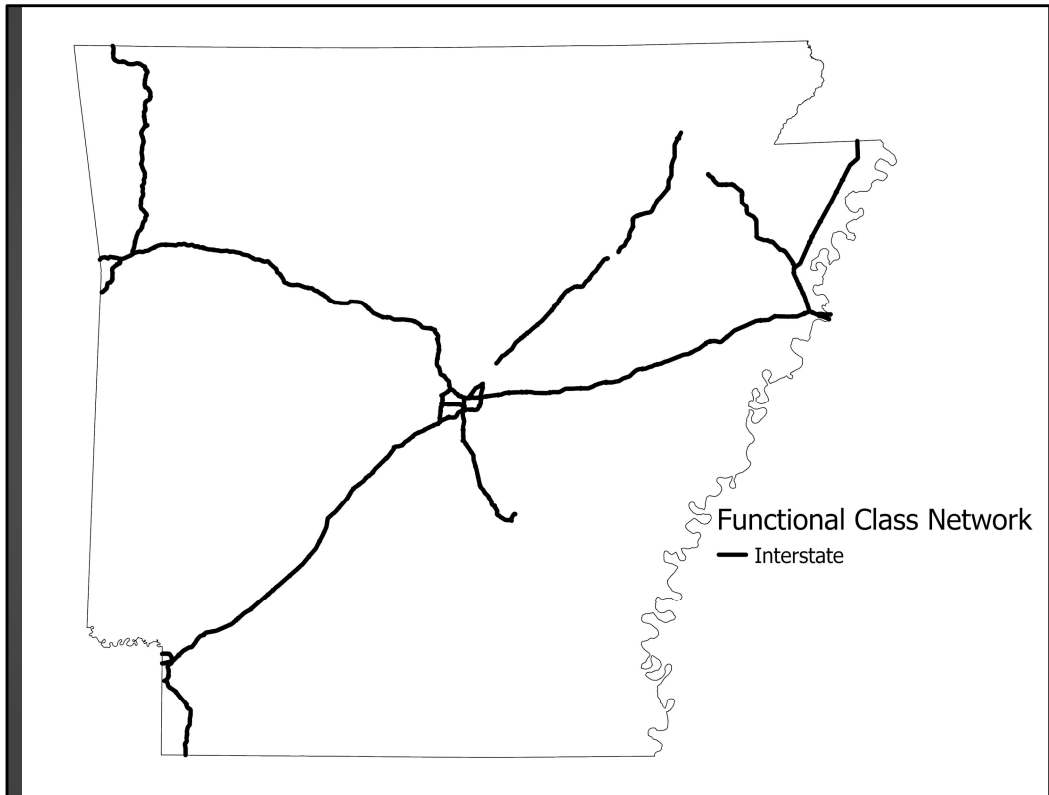
Roadway mobility function: Provides few opportunities for entry and exit and therefore low travel friction from vehicle access/egress

Roadway accessibility function: Provides many opportunities for entry and exit, which creates potentially higher friction from vehicle access/egress

Quick thought exercise: What is the highest transportation form of Mobility???

Flying What is the highest transportation form of Access???

Walking



Roadways serve two primary travel needs: access to/egress from specific locations and travel mobility. While these two functions lie at opposite ends of the continuum of roadway function, most roads provide some combination of each.

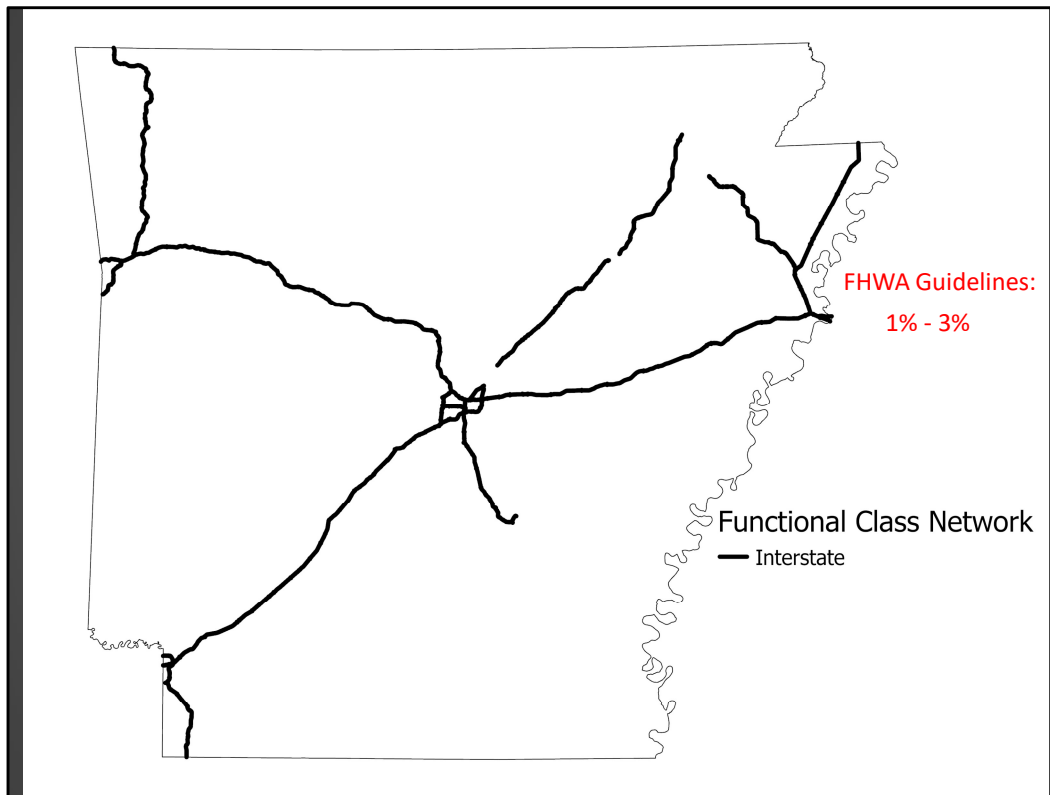
Roadway mobility function: Provides few opportunities for entry and exit and therefore low travel friction from vehicle access/egress

Roadway accessibility function: Provides many opportunities for entry and exit, which creates potentially higher friction from vehicle access/egress

Quick thought exercise: What is the highest transportation form of Mobility???

Flying What is the highest transportation form of Access???

Walking



Roadways serve two primary travel needs: access to/egress from specific locations and travel mobility. While these two functions lie at opposite ends of the continuum of roadway function, most roads provide some combination of each.

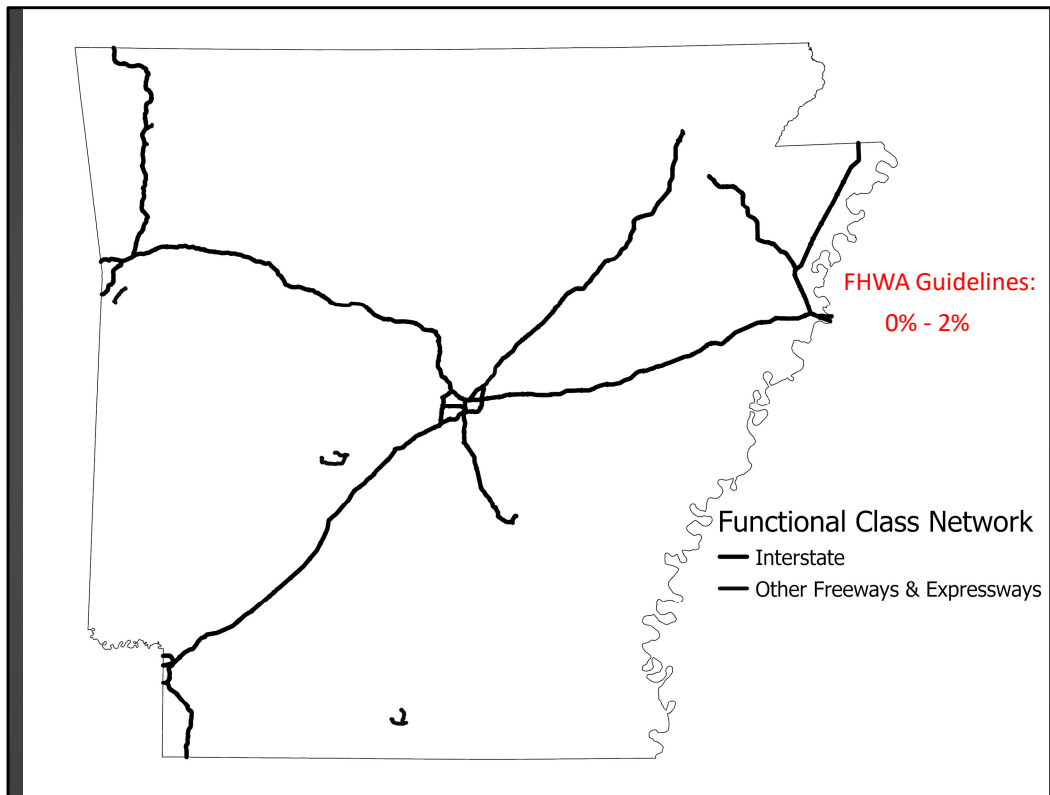
Roadway mobility function: Provides few opportunities for entry and exit and therefore low travel friction from vehicle access/egress

Roadway accessibility function: Provides many opportunities for entry and exit, which creates potentially higher friction from vehicle access/egress

Quick thought exercise: What is the highest transportation form of Mobility???

Flying What is the highest transportation form of Access???

Walking



Roadways serve two primary travel needs: access to/egress from specific locations and travel mobility. While these two functions lie at opposite ends of the continuum of roadway function, most roads provide some combination of each.

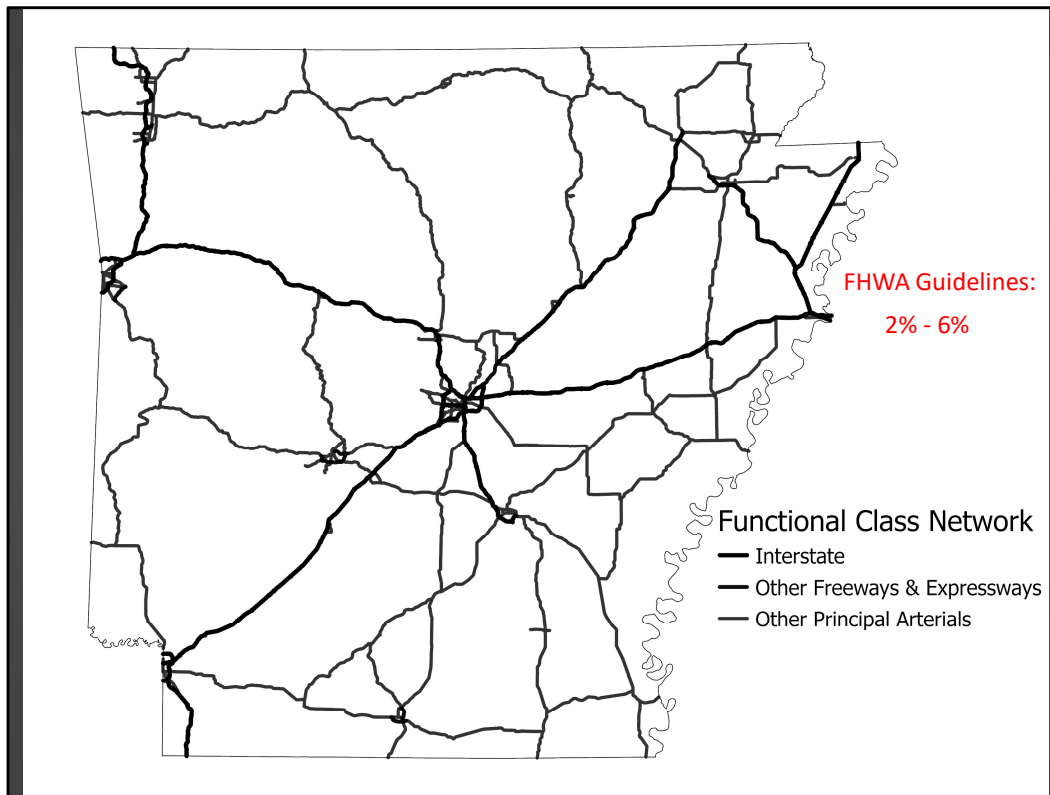
Roadway mobility function: Provides few opportunities for entry and exit and therefore low travel friction from vehicle access/egress

Roadway accessibility function: Provides many opportunities for entry and exit, which creates potentially higher friction from vehicle access/egress

Quick thought exercise: What is the highest transportation form of Mobility???

Flying What is the highest transportation form of Access???

Walking



Roadways serve two primary travel needs: access to/egress from specific locations and travel mobility. While these two functions lie at opposite ends of the continuum of roadway function, most roads provide some combination of each.

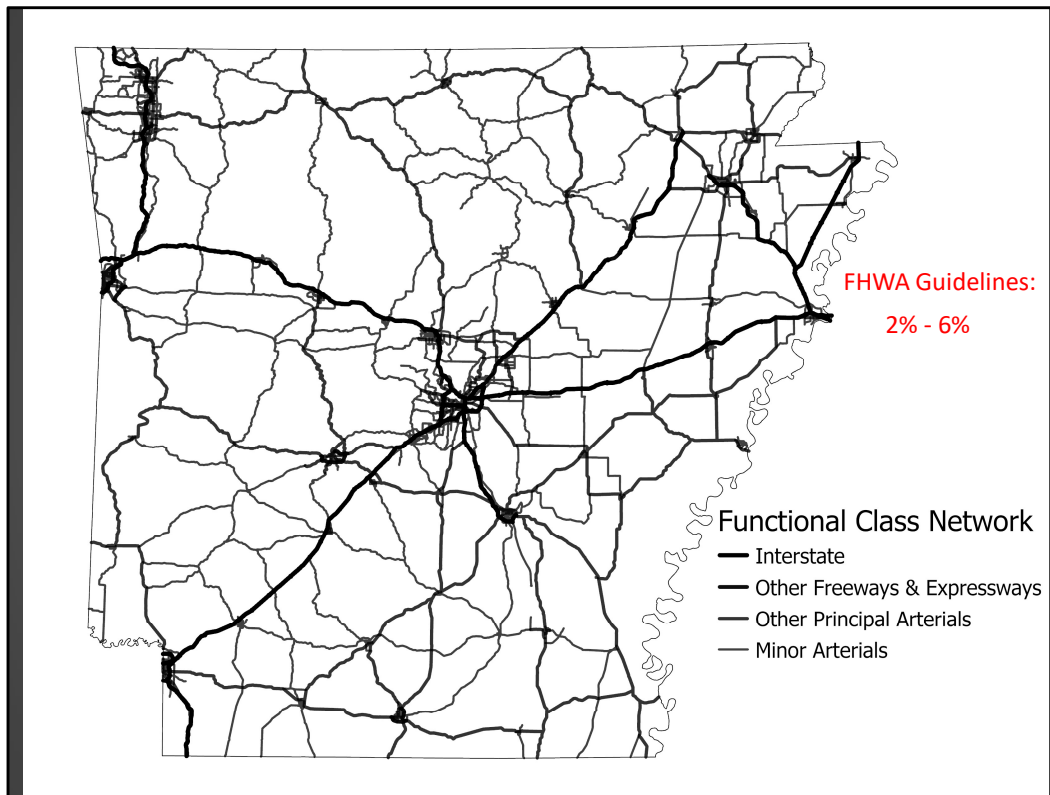
Roadway mobility function: Provides few opportunities for entry and exit and therefore low travel friction from vehicle access/egress

Roadway accessibility function: Provides many opportunities for entry and exit, which creates potentially higher friction from vehicle access/egress

Quick thought exercise: What is the highest transportation form of Mobility???

Flying What is the highest transportation form of Access???

Walking



Roadways serve two primary travel needs: access to/egress from specific locations and travel mobility. While these two functions lie at opposite ends of the continuum of roadway function, most roads provide some combination of each.

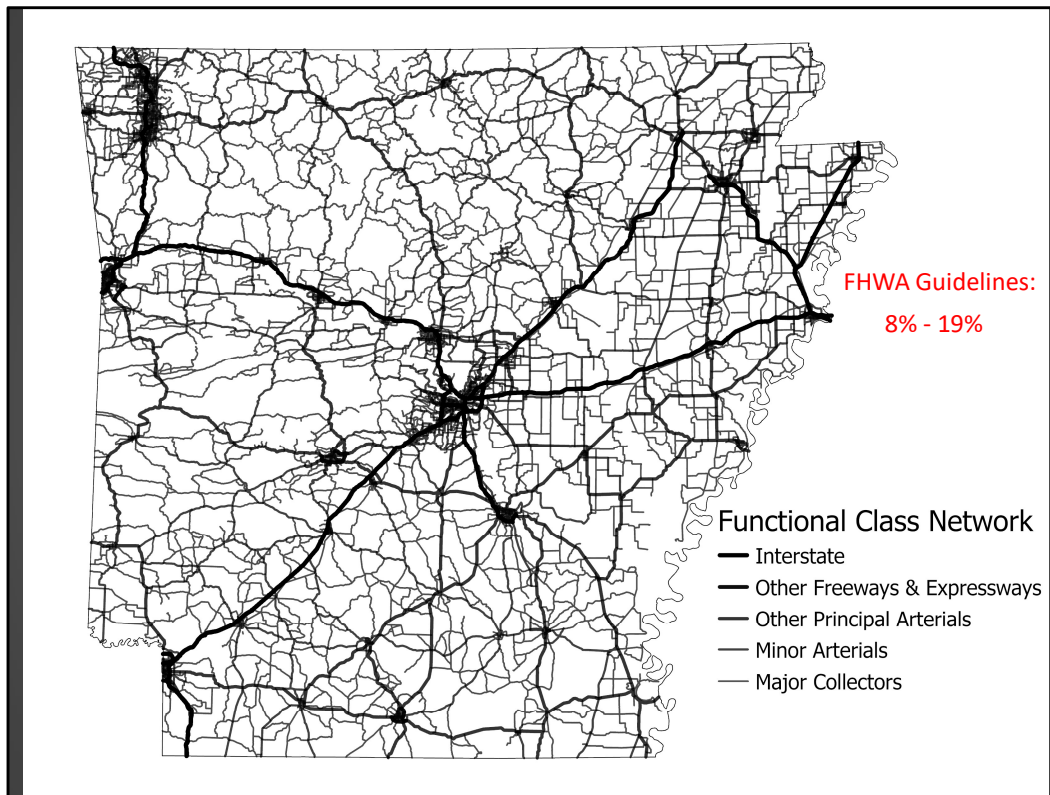
Roadway mobility function: Provides few opportunities for entry and exit and therefore low travel friction from vehicle access/egress

Roadway accessibility function: Provides many opportunities for entry and exit, which creates potentially higher friction from vehicle access/egress

Quick thought exercise: What is the highest transportation form of Mobility???

Flying What is the highest transportation form of Access???

Walking



Roadways serve two primary travel needs: access to/egress from specific locations and travel mobility. While these two functions lie at opposite ends of the continuum of roadway function, most roads provide some combination of each.

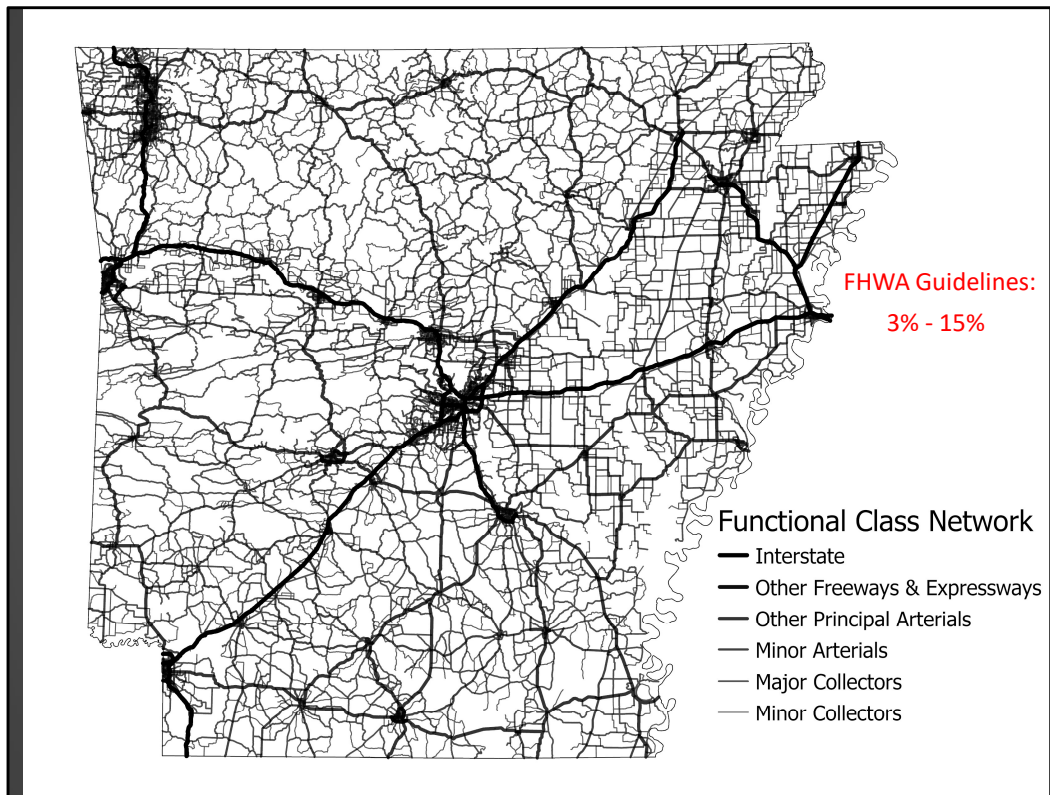
Roadway mobility function: Provides few opportunities for entry and exit and therefore low travel friction from vehicle access/egress

Roadway accessibility function: Provides many opportunities for entry and exit, which creates potentially higher friction from vehicle access/egress

Quick thought exercise: What is the highest transportation form of Mobility???

Flying What is the highest transportation form of Access???

Walking



Roadways serve two primary travel needs: access to/egress from specific locations and travel mobility. While these two functions lie at opposite ends of the continuum of roadway function, most roads provide some combination of each.

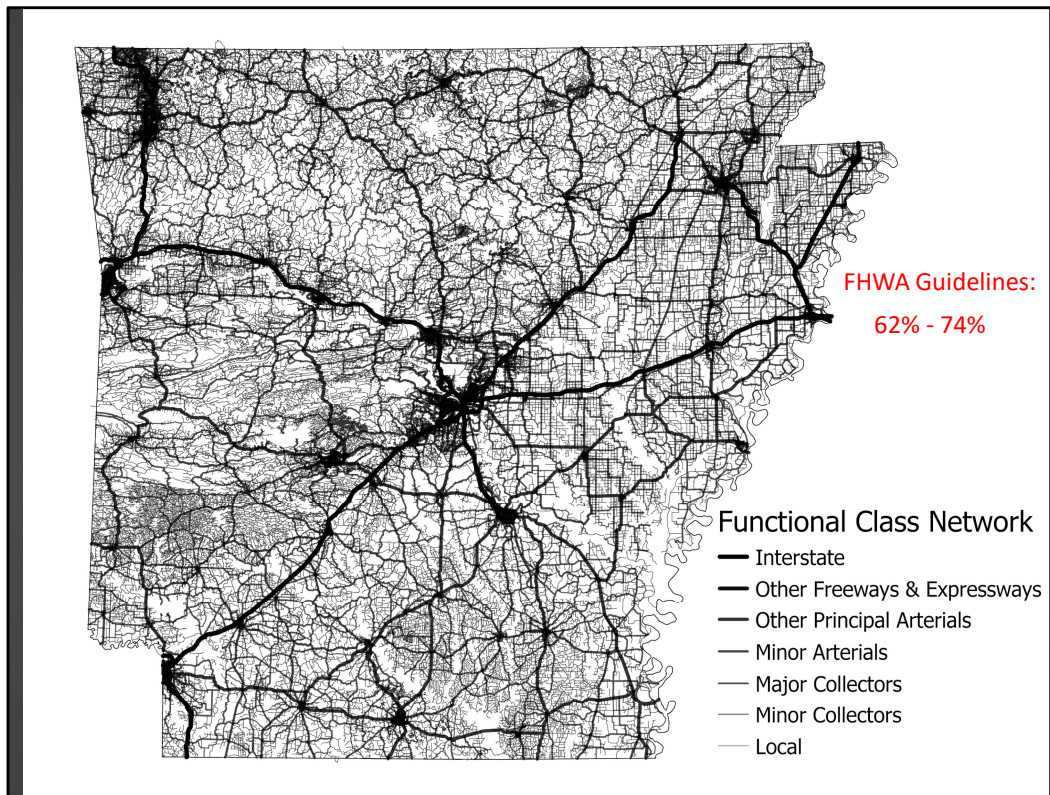
Roadway mobility function: Provides few opportunities for entry and exit and therefore low travel friction from vehicle access/egress

Roadway accessibility function: Provides many opportunities for entry and exit, which creates potentially higher friction from vehicle access/egress

Quick thought exercise: What is the highest transportation form of Mobility???

Flying What is the highest transportation form of Access???

Walking



Roadways serve two primary travel needs: access to/egress from specific locations and travel mobility. While these two functions lie at opposite ends of the continuum of roadway function, most roads provide some combination of each.

Roadway mobility function: Provides few opportunities for entry and exit and therefore low travel friction from vehicle access/egress

Roadway accessibility function: Provides many opportunities for entry and exit, which creates potentially higher friction from vehicle access/egress

Quick thought exercise: What is the highest transportation form of Mobility???

Flying What is the highest transportation form of Access???

Walking

What is Functional Classification?



Local- low speed, frequent driveways, parking, lowest adt/ Craighead county and eureka springs (also Newton CO)

Minor Collector- neighborhoods lower speeds, shorter trips, driveways higher adt / Gurdon (Clark County) Jonesboro

Major Collector- connect neighborhoods with arterials, moderate speed, short trips, serves schools store etc / Holly Springs and Texarkana

Minor Arterial- connect activity centers and close towns and cities higher speed / Erwin and Bentonville

Principal Arterial- Major routes throught the state and on the NHS / Dryfork and foRT smITH

Freeway – limited access, highspped, high capacity / Possum Grape, Hot springs

Interstate- FHWA designation / 530 going to PB and I-30

What is Functional Classification?

All
Roads



Local- low speed, frequent driveways, parking, lowest adt/ Craighead county and eureka springs (also Newton CO)

Minor Collector- neighborhoods lower speeds, shorter trips, driveways higher adt / Gurdon (Clark County) Jonesboro

Major Collector- connect neighborhoods with arterials, moderate speed, short trips, serves schools store etc / Holly Springs and Texarkana

Minor Arterial- connect activity centers and close towns and cities higher speed / Erwin and Bentonville

Principal Arterial- Major routes throught the state and on the NHS / Dryfork and foRT smITH

Freeway – limited access, highspped, high capacity / Possum Grape, Hot springs

Interstate- FHWA designation / 530 going to PB and I-30

What is Functional Classification?



Local- low speed, frequent driveways, parking, lowest adt/ Craighead county and eureka springs (also Newton CO)

Minor Collector- neighborhoods lower speeds, shorter trips, driveways higher adt / Gurdon (Clark County) Jonesboro

Major Collector- connect neighborhoods with arterials, moderate speed, short trips, serves schools store etc / Holly Springs and Texarkana

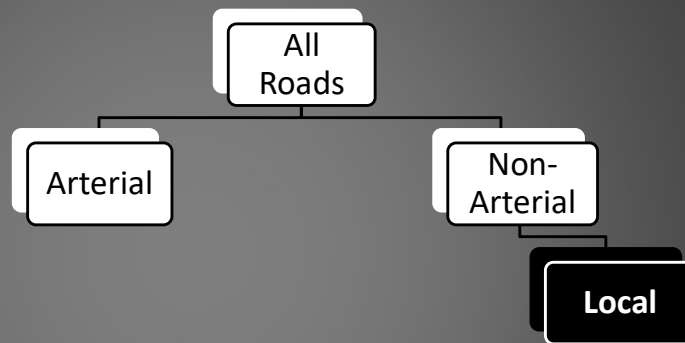
Minor Arterial- connect activity centers and close towns and cities higher speed / Erwin and Bentonville

Principal Arterial- Major routes throught the state and on the NHS / Dryfork and foRT smITH

Freeway – limited access, highspped, high capacity / Possum Grape, Hot springs

Interstate- FHWA designation / 530 going to PB and I-30

What is Functional Classification?



Local- low speed, frequent driveways, parking, lowest adt/ Craighead county and eureka springs (also Newton CO)

Minor Collector- neighborhoods lower speeds, shorter trips, driveways higher adt / Gurdon (Clark County) Jonesboro

Major Collector- connect neighborhoods with arterials, moderate speed, short trips, serves schools store etc / Holly Springs and Texarkana

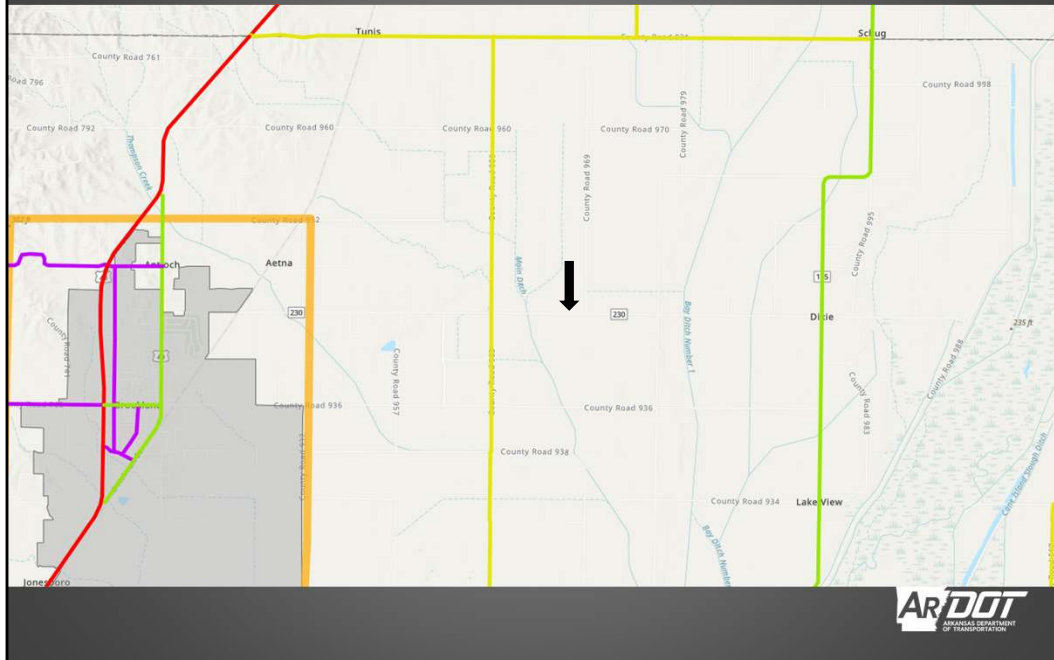
Minor Arterial- connect activity centers and close towns and cities higher speed / Erwin and Bentonville

Principal Arterial- Major routes throught the state and on the NHS / Dryfork and foRT smITH

Freeway – limited access, highspped, high capacity / Possum Grape, Hot springs

Interstate- FHWA designation / 530 going to PB and I-30

What is Functional Classification?



Local- low speed, frequent driveways, parking, lowest adt/ Craighead county and eureka springs (also Newton CO)

Minor Collector- neighborhoods lower speeds, shorter trips, driveways higher adt / Gurdon (Clark County) Jonesboro

Major Collector- connect neighborhoods with arterials, moderate speed, short trips, serves schools store etc / Holly Springs and Texarkana

Minor Arterial- connect activity centers and close towns and cities higher speed / Erwin and Bentonville

Principal Arterial- Major routes throught the state and on the NHS / Dryfork and foRT smITH

Freeway – limited access, highspped, high capacity / Possum Grape, Hot springs

Interstate- FHWA designation / 530 going to PB and I-30

What is Functional Classification?



Local- low speed, frequent driveways, parking, lowest adt/ Craighead county and eureka springs (also Newton CO)

Minor Collector- neighborhoods lower speeds, shorter trips, driveways higher adt / Gurdon (Clark County) Jonesboro

Major Collector- connect neighborhoods with arterials, moderate speed, short trips, serves schools store etc / Holly Springs and Texarkana

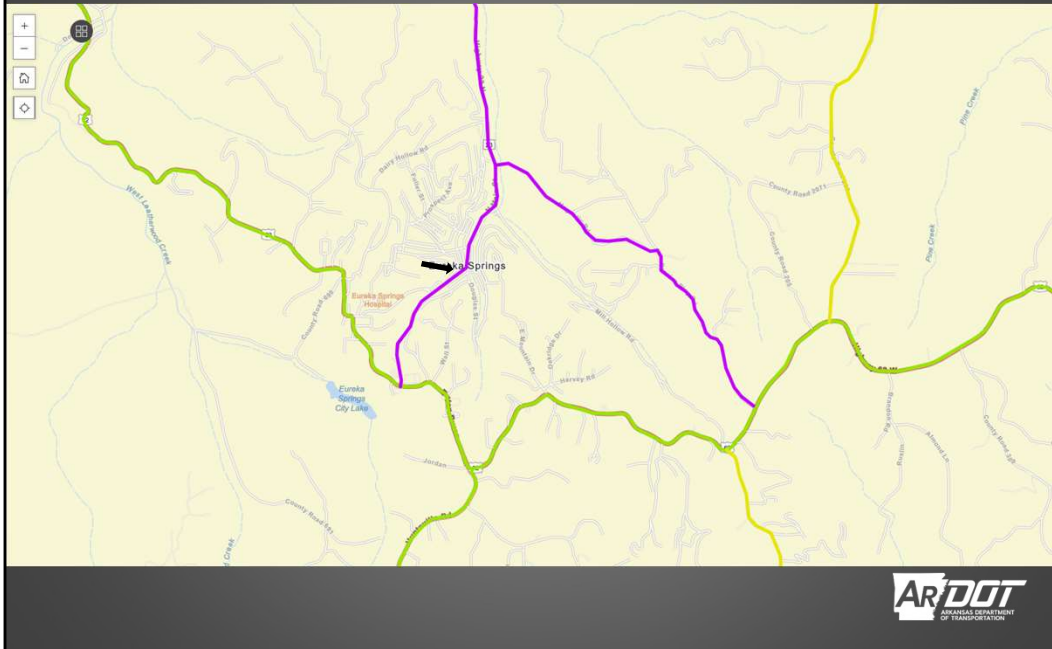
Minor Arterial- connect activity centers and close towns and cities higher speed / Erwin and Bentonville

Principal Arterial- Major routes throught the state and on the NHS / Dryfork and foRT smITH

Freeway – limited access, highspped, high capacity / Possum Grape, Hot springs

Interstate- FHWA designation / 530 going to PB and I-30

What is Functional Classification?



Local- low speed, frequent driveways, parking, lowest adt/ Craighead county and eureka springs (also Newton CO)

Minor Collector- neighborhoods lower speeds, shorter trips, driveways higher adt / Gurdon (Clark County) Jonesboro

Major Collector- connect neighborhoods with arterials, moderate speed, short trips, serves schools store etc / Holly Springs and Texarkana

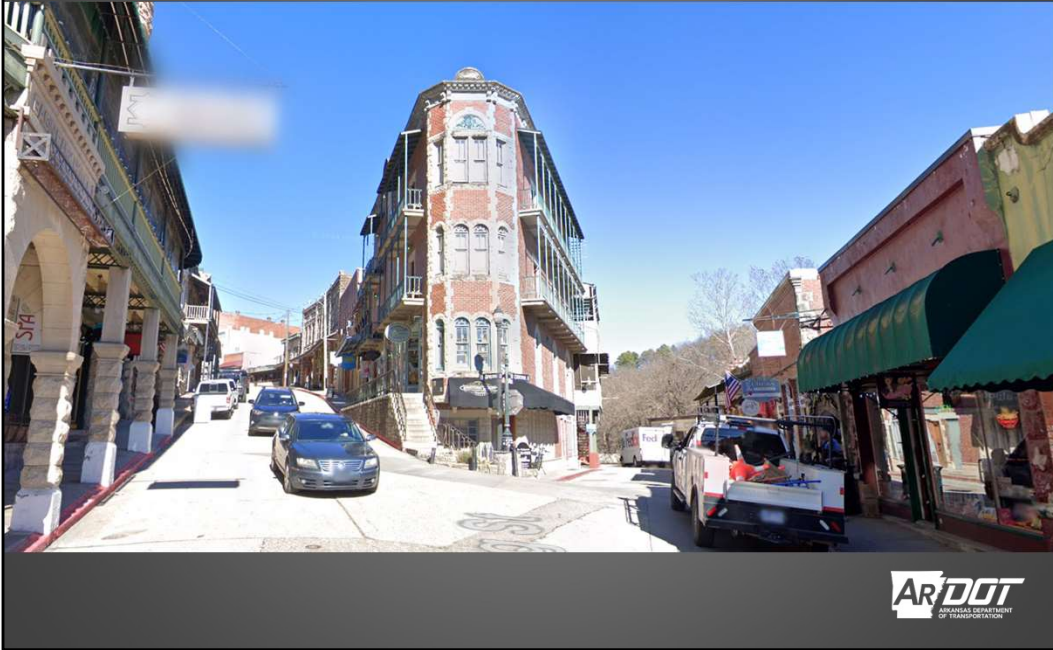
Minor Arterial- connect activity centers and close towns and cities higher speed / Erwin and Bentonville

Principal Arterial- Major routes throught the state and on the NHS / Dryfork and foRT smITH

Freeway – limited access, highspped, high capacity / Possum Grape, Hot springs

Interstate- FHWA designation / 530 going to PB and I-30

What is Functional Classification?



Local- low speed, frequent driveways, parking, lowest adt/ Craighead county and eureka springs (also Newton CO)

Minor Collector- neighborhoods lower speeds, shorter trips, driveways higher adt / Gurdon (Clark County) Jonesboro

Major Collector- connect neighborhoods with arterials, moderate speed, short trips, serves schools store etc / Holly Springs and Texarkana

Minor Arterial- connect activity centers and close towns and cities higher speed / Erwin and Bentonville

Principal Arterial- Major routes throught the state and on the NHS / Dryfork and foRT smITH

Freeway – limited access, highspped, high capacity / Possum Grape, Hot springs

Interstate- FHWA designation / 530 going to PB and I-30

What is Functional Classification?



Local- low speed, frequent driveways, parking, lowest adt/ Craighead county and eureka springs (also Newton CO)

Minor Collector- neighborhoods lower speeds, shorter trips, driveways higher adt / Gurdon (Clark County) Jonesboro

Major Collector- connect neighborhoods with arterials, moderate speed, short trips, serves schools store etc / Holly Springs and Texarkana

Minor Arterial- connect activity centers and close towns and cities higher speed / Erwin and Bentonville

Principal Arterial- Major routes throught the state and on the NHS / Dryfork and foRT smITH

Freeway – limited access, highspped, high capacity / Possum Grape, Hot springs

Interstate- FHWA designation / 530 going to PB and I-30

What is Functional Classification?



Local- low speed, frequent driveways, parking, lowest adt/ Craighead county and eureka springs (also Newton CO)

Minor Collector- neighborhoods lower speeds, shorter trips, driveways higher adt / Gurdon (Clark County) Jonesboro

Major Collector- connect neighborhoods with arterials, moderate speed, short trips, serves schools store etc / Holly Springs and Texarkana

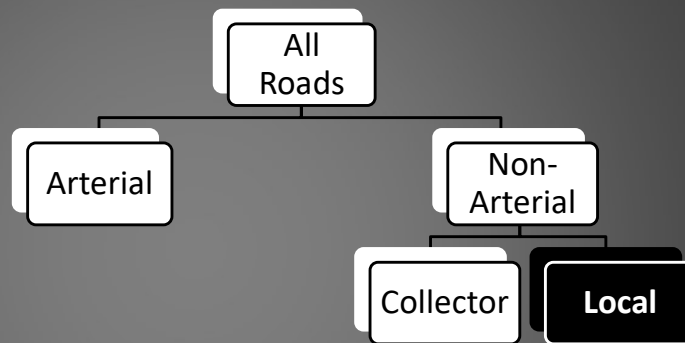
Minor Arterial- connect activity centers and close towns and cities higher speed / Erwin and Bentonville

Principal Arterial- Major routes throught the state and on the NHS / Dryfork and foRT smITH

Freeway – limited access, highspped, high capacity / Possum Grape, Hot springs

Interstate- FHWA designation / 530 going to PB and I-30

What is Functional Classification?



Local- low speed, frequent driveways, parking, lowest adt/ Craighead county and eureka springs (also Newton CO)

Minor Collector- neighborhoods lower speeds, shorter trips, driveways higher adt / Gurdon (Clark County) Jonesboro

Major Collector- connect neighborhoods with arterials, moderate speed, short trips, serves schools store etc / Holly Springs and Texarkana

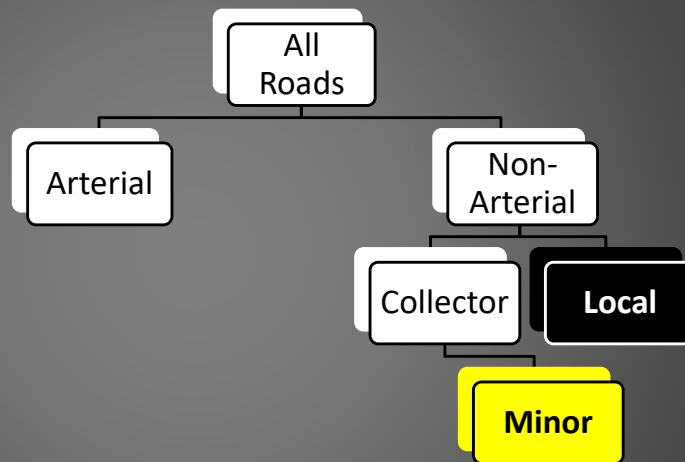
Minor Arterial- connect activity centers and close towns and cities higher speed / Erwin and Bentonville

Principal Arterial- Major routes throught the state and on the NHS / Dryfork and foRT smITH

Freeway – limited access, highspped, high capacity / Possum Grape, Hot springs

Interstate- FHWA designation / 530 going to PB and I-30

What is Functional Classification?



Local- low speed, frequent driveways, parking, lowest adt/ Craighead county and eureka springs (also Newton CO)

Minor Collector- neighborhoods lower speeds, shorter trips, driveways higher adt / Gurdon (Clark County) Jonesboro

Major Collector- connect neighborhoods with arterials, moderate speed, short trips, serves schools store etc / Holly Springs and Texarkana

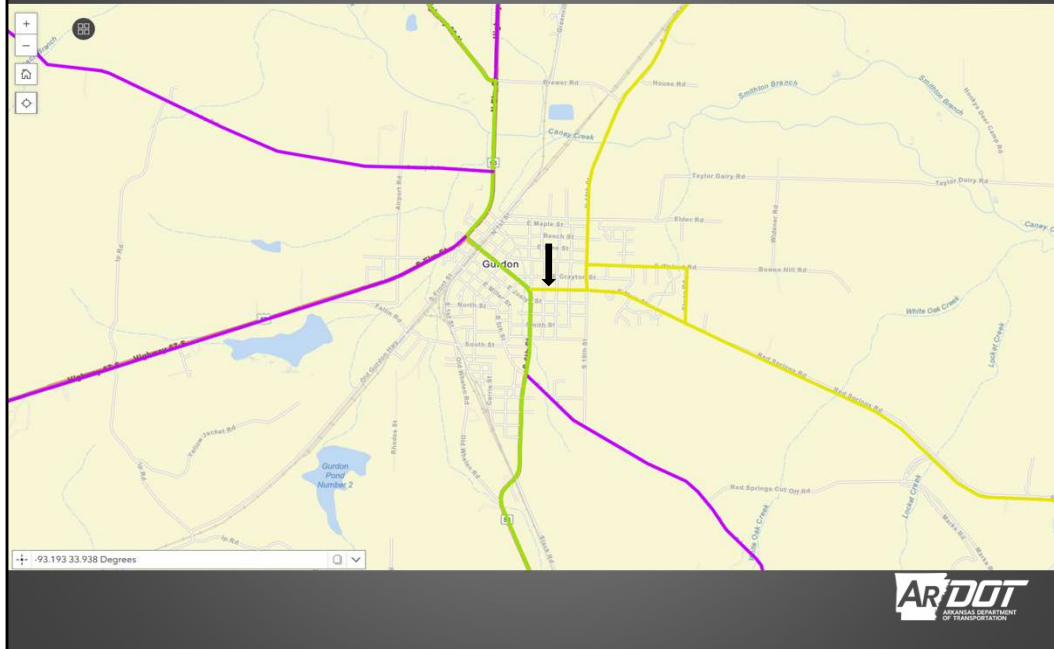
Minor Arterial- connect activity centers and close towns and cities higher speed / Erwin and Bentonville

Principal Arterial- Major routes throught the state and on the NHS / Dryfork and foRT smITH

Freeway – limited access, highspped, high capacity / Possum Grape, Hot springs

Interstate- FHWA designation / 530 going to PB and I-30

What is Functional Classification?



Local- low speed, frequent driveways, parking, lowest adt/ Craighead county and eureka springs (also Newton CO)

Minor Collector- neighborhoods lower speeds, shorter trips, driveways higher adt / Gurdon (Clark County) Jonesboro

Major Collector- connect neighborhoods with arterials, moderate speed, short trips, serves schools store etc / Holly Springs and Texarkana

Minor Arterial- connect activity centers and close towns and cities higher speed / Erwin and Bentonville

Principal Arterial- Major routes throught the state and on the NHS / Dryfork and foRT smITH

Freeway – limited access, highspped, high capacity / Possum Grape, Hot springs

Interstate- FHWA designation / 530 going to PB and I-30

What is Functional Classification?



Local- low speed, frequent driveways, parking, lowest adt/ Craighead county and eureka springs (also Newton CO)

Minor Collector- neighborhoods lower speeds, shorter trips, driveways higher adt / Gurdon (Clark County) Jonesboro

Major Collector- connect neighborhoods with arterials, moderate speed, short trips, serves schools store etc / Holly Springs and Texarkana

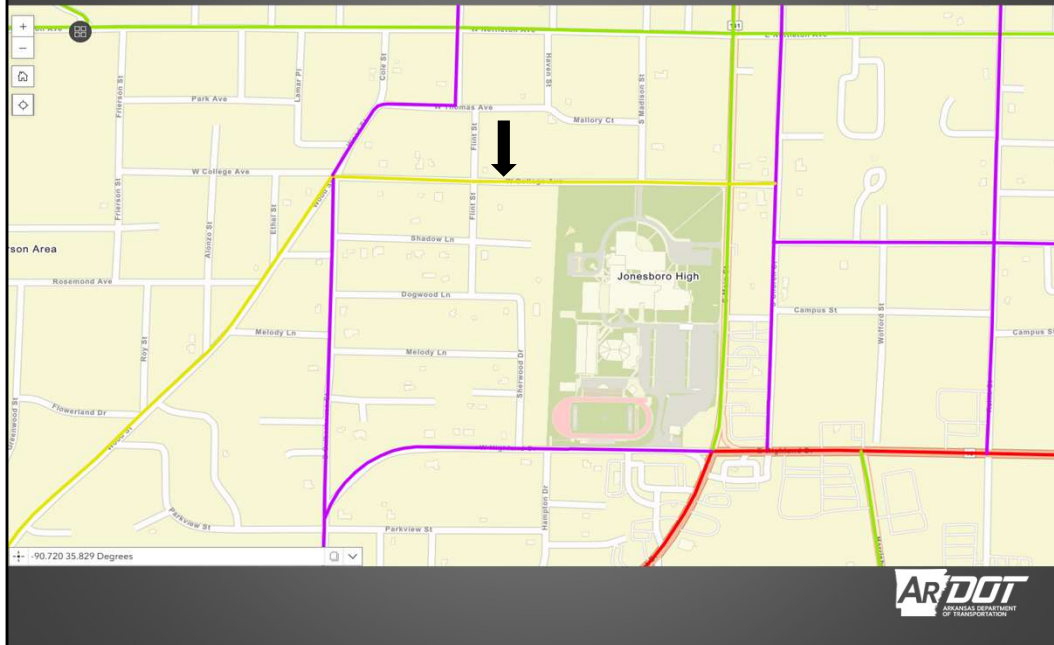
Minor Arterial- connect activity centers and close towns and cities higher speed / Erwin and Bentonville

Principal Arterial- Major routes throught the state and on the NHS / Dryfork and foRT smITH

Freeway – limited access, highspped, high capacity / Possum Grape, Hot springs

Interstate- FHWA designation / 530 going to PB and I-30

What is Functional Classification?



- Local- low speed, frequent driveways, parking, lowest adt/ Craighead county and eureka springs (also Newton CO)
- Minor Collector- neighborhoods lower speeds, shorter trips, driveways higher adt / Gurdon (Clark County) Jonesboro
- Major Collector- connect neighborhoods with arterials, moderate speed, short trips, serves schools store etc / Holly Springs and Texarkana
- Minor Arterial- connect activity centers and close towns and cities higher speed / Erwin and Bentonville
- Principal Arterial- Major routes throught the state and on the NHS / Dryfork and foRT smITH
- Freeway – limited access, highspped, high capacity / Possum Grape, Hot springs
- Interstate- FHWA designation / 530 going to PB and I-30

What is Functional Classification?



Local- low speed, frequent driveways, parking, lowest adt/ Craighead county and eureka springs (also Newton CO)

Minor Collector- neighborhoods lower speeds, shorter trips, driveways higher adt / Gurdon (Clark County) Jonesboro

Major Collector- connect neighborhoods with arterials, moderate speed, short trips, serves schools store etc / Holly Springs and Texarkana

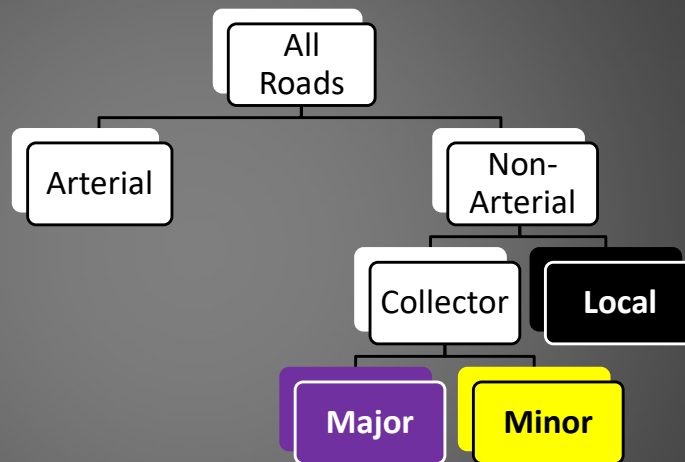
Minor Arterial- connect activity centers and close towns and cities higher speed / Erwin and Bentonville

Principal Arterial- Major routes throught the state and on the NHS / Dryfork and foRT smITH

Freeway – limited access, highspped, high capacity / Possum Grape, Hot springs

Interstate- FHWA designation / 530 going to PB and I-30

What is Functional Classification?



Local- low speed, frequent driveways, parking, lowest adt/ Craighead county and eureka springs (also Newton CO)

Minor Collector- neighborhoods lower speeds, shorter trips, driveways higher adt / Gurdon (Clark County) Jonesboro

Major Collector- connect neighborhoods with arterials, moderate speed, short trips, serves schools store etc / Holly Springs and Texarkana

Minor Arterial- connect activity centers and close towns and cities higher speed / Erwin and Bentonville

Principal Arterial- Major routes throught the state and on the NHS / Dryfork and foRT smITH

Freeway – limited access, highspped, high capacity / Possum Grape, Hot springs

Interstate- FHWA designation / 530 going to PB and I-30

What is Functional Classification?



Local- low speed, frequent driveways, parking, lowest adt/ Craighead county and eureka springs (also Newton CO)

Minor Collector- neighborhoods lower speeds, shorter trips, driveways higher adt / Gurdon (Clark County) Jonesboro

Major Collector- connect neighborhoods with arterials, moderate speed, short trips, serves schools store etc / Holly Springs and Texarkana

Minor Arterial- connect activity centers and close towns and cities higher speed / Erwin and Bentonville

Principal Arterial- Major routes throught the state and on the NHS / Dryfork and foRT smITH

Freeway – limited access, highspped, high capacity / Possum Grape, Hot springs

Interstate- FHWA designation / 530 going to PB and I-30

What is Functional Classification?



Local- low speed, frequent driveways, parking, lowest adt/ Craighead county and eureka springs (also Newton CO)

Minor Collector- neighborhoods lower speeds, shorter trips, driveways higher adt / Gurdon (Clark County) Jonesboro

Major Collector- connect neighborhoods with arterials, moderate speed, short trips, serves schools store etc / Holly Springs and Texarkana

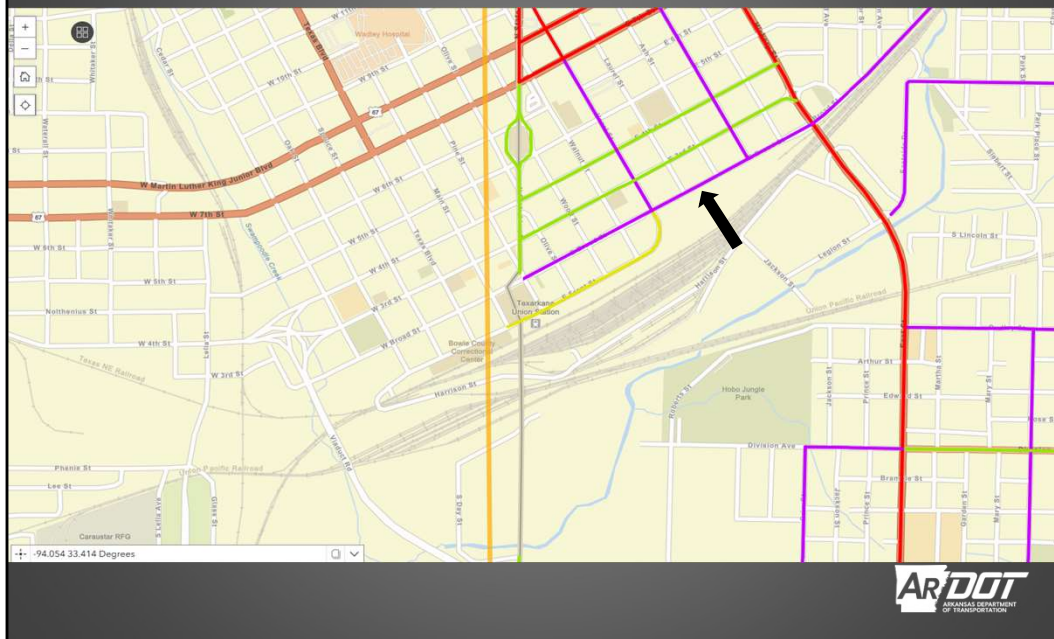
Minor Arterial- connect activity centers and close towns and cities higher speed / Erwin and Bentonville

Principal Arterial- Major routes throught the state and on the NHS / Dryfork and foRT smITH

Freeway – limited access, highspped, high capacity / Possum Grape, Hot springs

Interstate- FHWA designation / 530 going to PB and I-30

What is Functional Classification?



Local- low speed, frequent driveways, parking, lowest adt/ Craighead county and eureka springs (also Newton CO)

Minor Collector- neighborhoods lower speeds, shorter trips, driveways higher adt / Gurdon (Clark County) Jonesboro

Major Collector- connect neighborhoods with arterials, moderate speed, short trips, serves schools store etc / Holly Springs and Texarkana

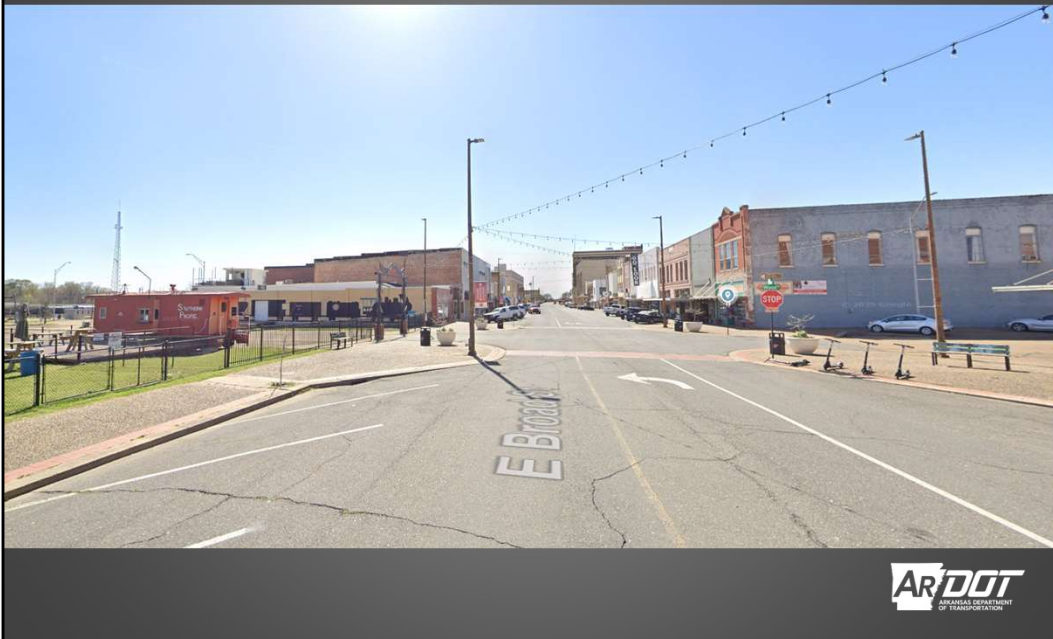
Minor Arterial- connect activity centers and close towns and cities higher speed / Erwin and Bentonville

Principal Arterial- Major routes throught the state and on the NHS / Dryfork and foRT smITH

Freeway – limited access, highspped, high capacity / Possum Grape, Hot springs

Interstate- FHWA designation / 530 going to PB and I-30

What is Functional Classification?



Local- low speed, frequent driveways, parking, lowest adt/ Craighead county and eureka springs (also Newton CO)

Minor Collector- neighborhoods lower speeds, shorter trips, driveways higher adt / Gurdon (Clark County) Jonesboro

Major Collector- connect neighborhoods with arterials, moderate speed, short trips, serves schools store etc / Holly Springs and Texarkana

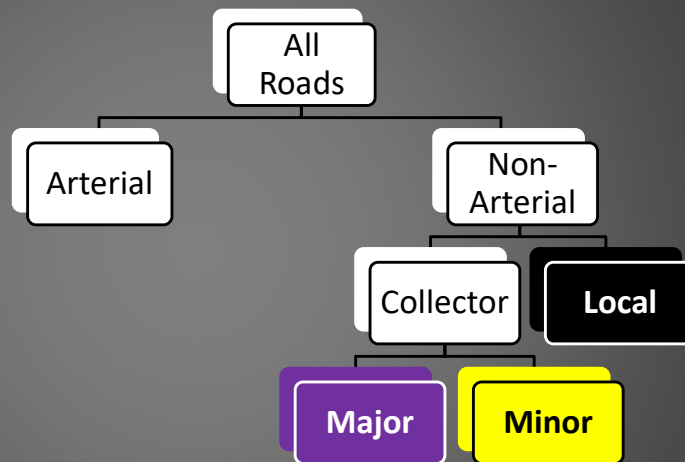
Minor Arterial- connect activity centers and close towns and cities higher speed / Erwin and Bentonville

Principal Arterial- Major routes throught the state and on the NHS / Dryfork and foRT smITH

Freeway – limited access, highspped, high capacity / Possum Grape, Hot springs

Interstate- FHWA designation / 530 going to PB and I-30

What is Functional Classification?



Local- low speed, frequent driveways, parking, lowest adt/ Craighead county and eureka springs (also Newton CO)

Minor Collector- neighborhoods lower speeds, shorter trips, driveways higher adt / Gurdon (Clark County) Jonesboro

Major Collector- connect neighborhoods with arterials, moderate speed, short trips, serves schools store etc / Holly Springs and Texarkana

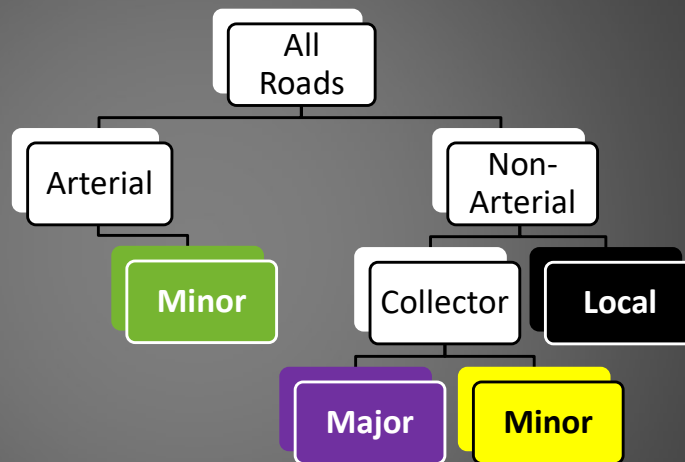
Minor Arterial- connect activity centers and close towns and cities higher speed / Erwin and Bentonville

Principal Arterial- Major routes throught the state and on the NHS / Dryfork and foRT smITH

Freeway – limited access, highspped, high capacity / Possum Grape, Hot springs

Interstate- FHWA designation / 530 going to PB and I-30

What is Functional Classification?



Local- low speed, frequent driveways, parking, lowest adt/ Craighead county and eureka springs (also Newton CO)

Minor Collector- neighborhoods lower speeds, shorter trips, driveways higher adt / Gurdon (Clark County) Jonesboro

Major Collector- connect neighborhoods with arterials, moderate speed, short trips, serves schools store etc / Holly Springs and Texarkana

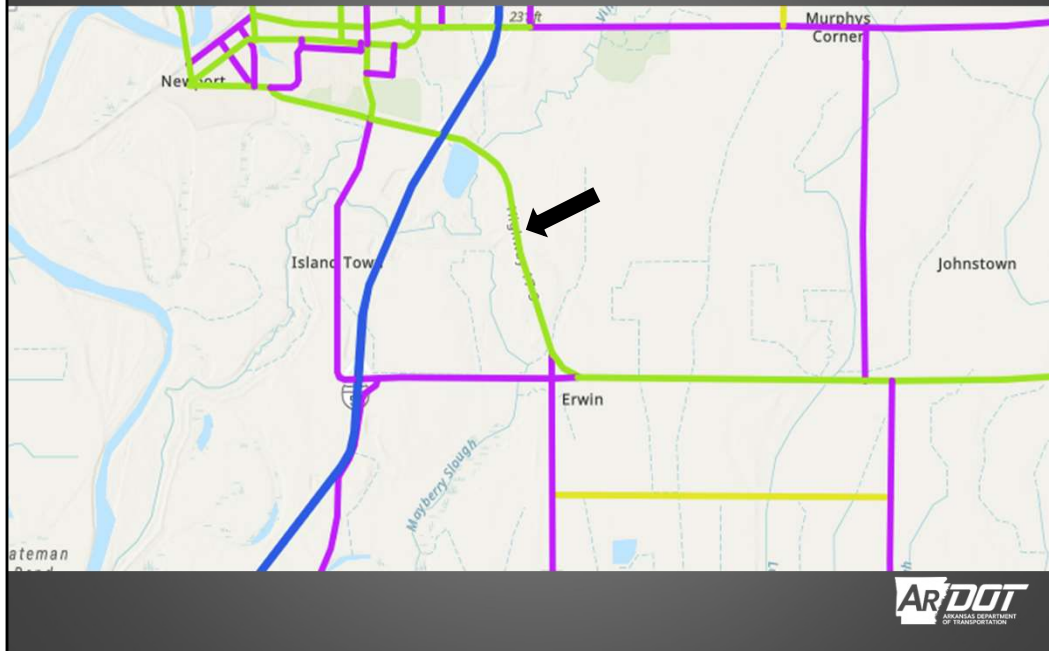
Minor Arterial- connect activity centers and close towns and cities higher speed / Erwin and Bentonville

Principal Arterial- Major routes throught the state and on the NHS / Dryfork and foRT smITH

Freeway – limited access, highspped, high capacity / Possum Grape, Hot springs

Interstate- FHWA designation / 530 going to PB and I-30

What is Functional Classification?



Local- low speed, frequent driveways, parking, lowest adt/ Craighead county and eureka springs (also Newton CO)

Minor Collector- neighborhoods lower speeds, shorter trips, driveways higher adt / Gurdon (Clark County) Jonesboro

Major Collector- connect neighborhoods with arterials, moderate speed, short trips, serves schools store etc / Holly Springs and Texarkana

Minor Arterial- connect activity centers and close towns and cities higher speed / Erwin and Bentonville

Principal Arterial- Major routes throught the state and on the NHS / Dryfork and foRT smITH

Freeway – limited access, highspped, high capacity / Possum Grape, Hot springs

Interstate- FHWA designation / 530 going to PB and I-30

What is Functional Classification?



Local- low speed, frequent driveways, parking, lowest adt/ Craighead county and eureka springs (also Newton CO)

Minor Collector- neighborhoods lower speeds, shorter trips, driveways higher adt / Gurdon (Clark County) Jonesboro

Major Collector- connect neighborhoods with arterials, moderate speed, short trips, serves schools store etc / Holly Springs and Texarkana

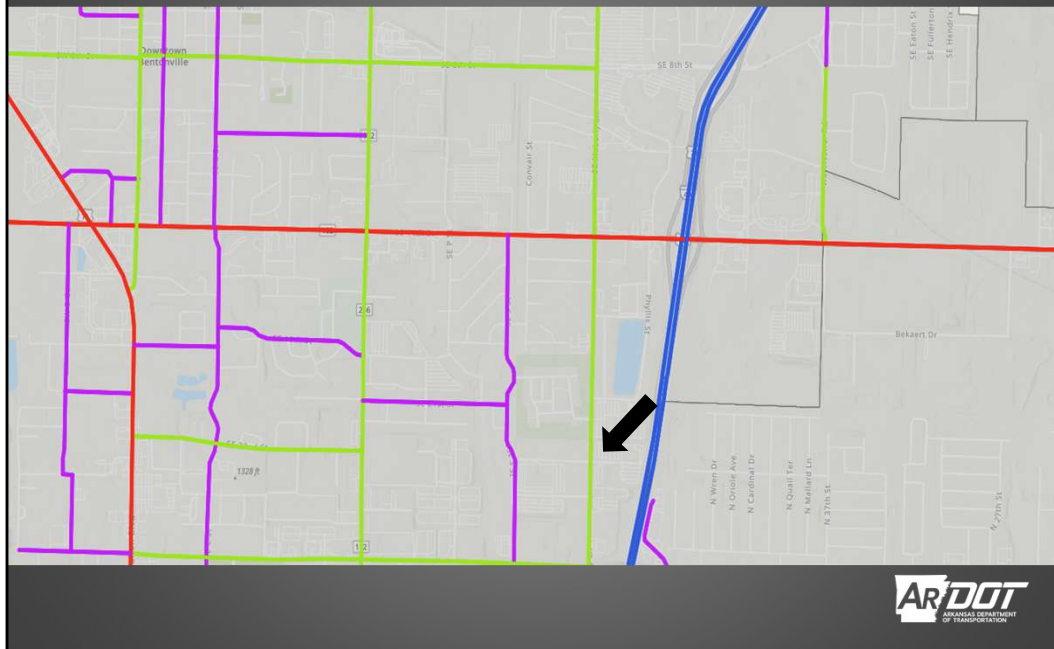
Minor Arterial- connect activity centers and close towns and cities higher speed / Erwin and Bentonville

Principal Arterial- Major routes throught the state and on the NHS / Dryfork and foRT smITH

Freeway – limited access, highspped, high capacity / Possum Grape, Hot springs

Interstate- FHWA designation / 530 going to PB and I-30

What is Functional Classification?



- Local- low speed, frequent driveways, parking, lowest adt/ Craighead county and eureka springs (also Newton CO)
- Minor Collector- neighborhoods lower speeds, shorter trips, driveways higher adt / Gurdon (Clark County) Jonesboro
- Major Collector- connect neighborhoods with arterials, moderate speed, short trips, serves schools store etc / Holly Springs and Texarkana
- Minor Arterial- connect activity centers and close towns and cities higher speed / Erwin and Bentonville
- Principal Arterial- Major routes throught the state and on the NHS / Dryfork and foRT smITH
- Freeway – limited access, highspped, high capacity / Possum Grape, Hot springs
- Interstate- FHWA designation / 530 going to PB and I-30

What is Functional Classification?



Local- low speed, frequent driveways, parking, lowest adt/ Craighead county and eureka springs (also Newton CO)

Minor Collector- neighborhoods lower speeds, shorter trips, driveways higher adt / Gurdon (Clark County) Jonesboro

Major Collector- connect neighborhoods with arterials, moderate speed, short trips, serves schools store etc / Holly Springs and Texarkana

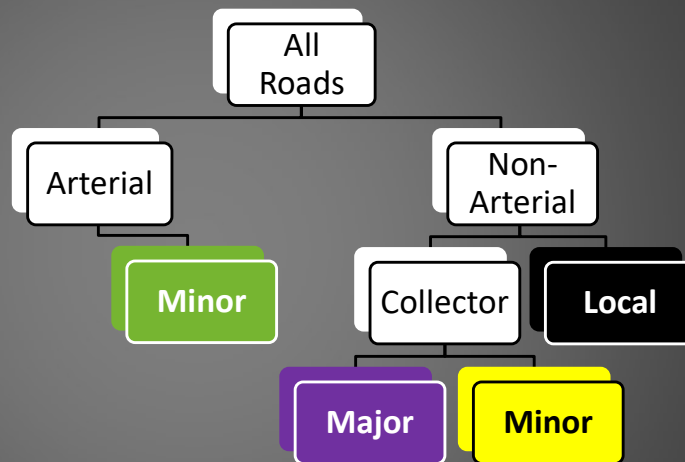
Minor Arterial- connect activity centers and close towns and cities higher speed / Erwin and Bentonville

Principal Arterial- Major routes throught the state and on the NHS / Dryfork and foRT smITH

Freeway – limited access, highspeed, high capacity / Possum Grape, Hot springs

Interstate- FHWA designation / 530 going to PB and I-30

What is Functional Classification?



Local- low speed, frequent driveways, parking, lowest adt/ Craighead county and eureka springs (also Newton CO)

Minor Collector- neighborhoods lower speeds, shorter trips, driveways higher adt / Gurdon (Clark County) Jonesboro

Major Collector- connect neighborhoods with arterials, moderate speed, short trips, serves schools store etc / Holly Springs and Texarkana

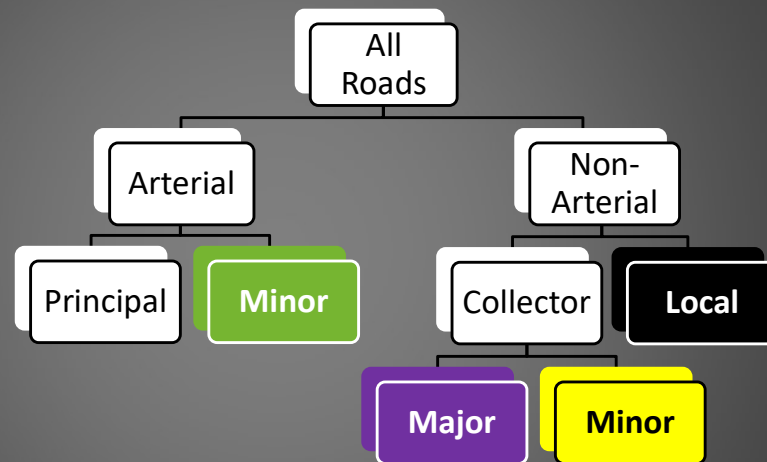
Minor Arterial- connect activity centers and close towns and cities higher speed / Erwin and Bentonville

Principal Arterial- Major routes throught the state and on the NHS / Dryfork and foRT smITH

Freeway – limited access, highspped, high capacity / Possum Grape, Hot springs

Interstate- FHWA designation / 530 going to PB and I-30

What is Functional Classification?



Local- low speed, frequent driveways, parking, lowest adt/ Craighead county and eureka springs (also Newton CO)

Minor Collector- neighborhoods lower speeds, shorter trips, driveways higher adt / Gurdon (Clark County) Jonesboro

Major Collector- connect neighborhoods with arterials, moderate speed, short trips, serves schools store etc / Holly Springs and Texarkana

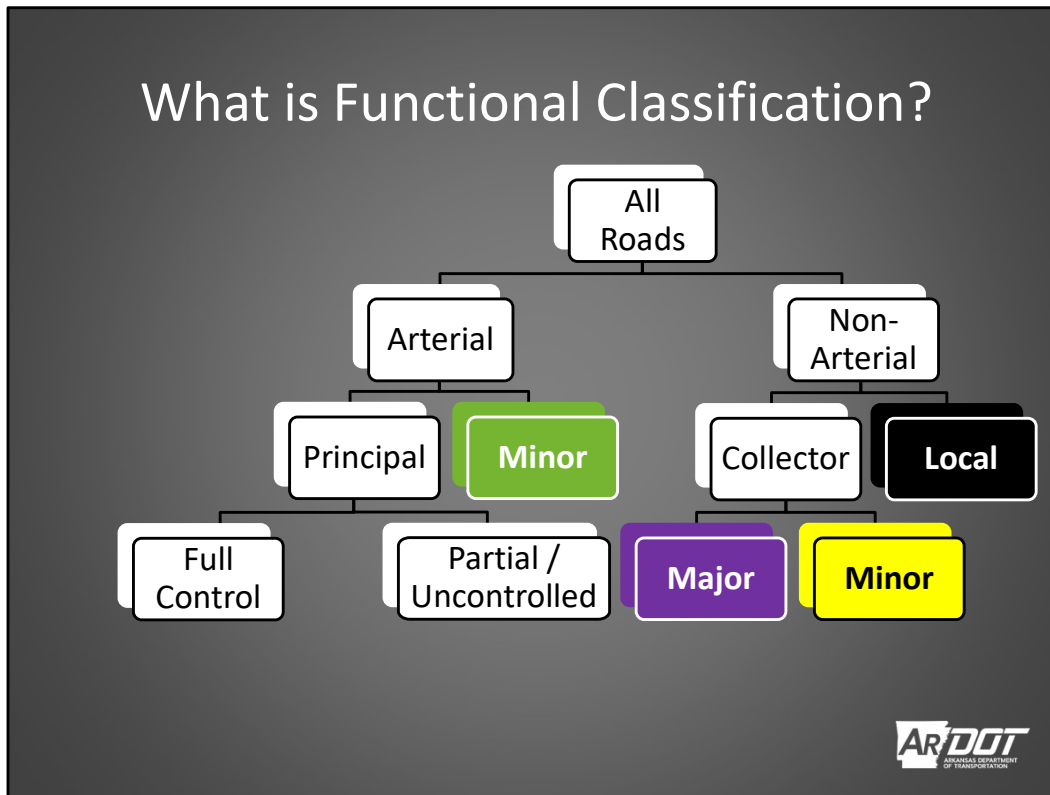
Minor Arterial- connect activity centers and close towns and cities higher speed / Erwin and Bentonville

Principal Arterial- Major routes throught the state and on the NHS / Dryfork and foRT smITH

Freeway – limited access, highspped, high capacity / Possum Grape, Hot springs

Interstate- FHWA designation / 530 going to PB and I-30

What is Functional Classification?



Local- low speed, frequent driveways, parking, lowest adt/ Craighead county and eureka springs (also Newton CO)

Minor Collector- neighborhoods lower speeds, shorter trips, driveways higher adt / Gurdon (Clark County) Jonesboro

Major Collector- connect neighborhoods with arterials, moderate speed, short trips, serves schools store etc / Holly Springs and Texarkana

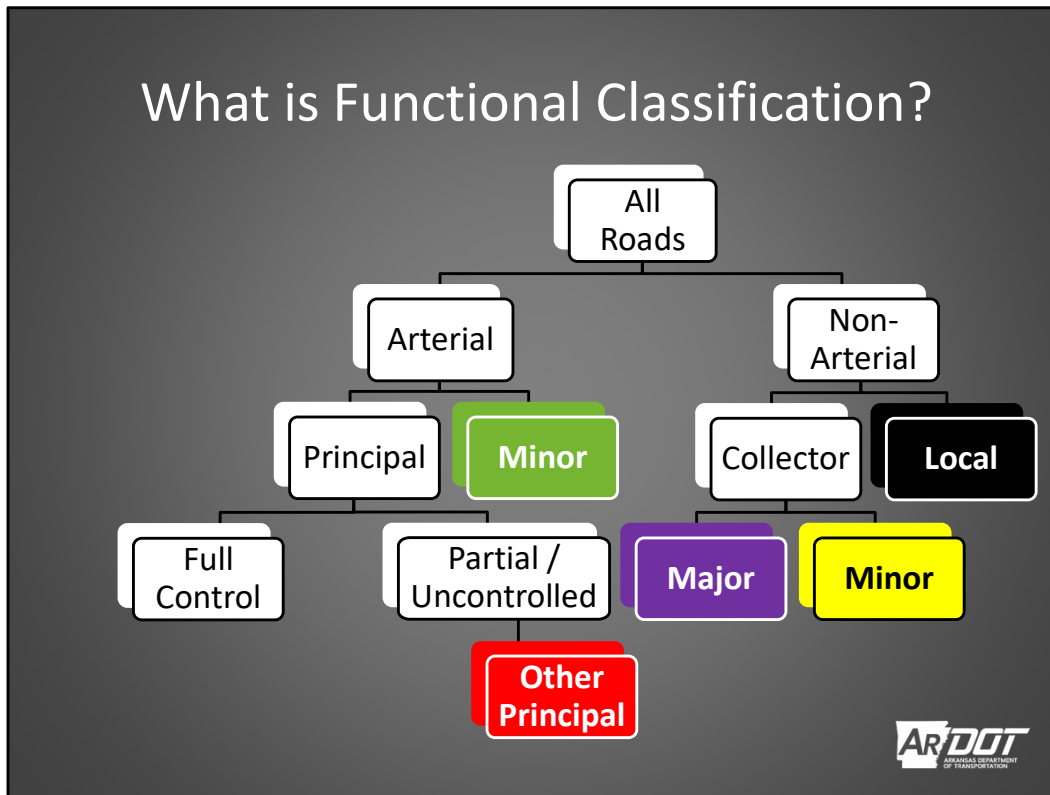
Minor Arterial- connect activity centers and close towns and cities higher speed / Erwin and Bentonville

Principal Arterial- Major routes throught the state and on the NHS / Dryfork and foRT smITH

Freeway – limited access, highspped, high capacity / Possum Grape, Hot springs

Interstate- FHWA designation / 530 going to PB and I-30

What is Functional Classification?



Local- low speed, frequent driveways, parking, lowest adt/ Craighead county and eureka springs (also Newton CO)

Minor Collector- neighborhoods lower speeds, shorter trips, driveways higher adt / Gurdon (Clark County) Jonesboro

Major Collector- connect neighborhoods with arterials, moderate speed, short trips, serves schools store etc / Holly Springs and Texarkana

Minor Arterial- connect activity centers and close towns and cities higher speed / Erwin and Bentonville

Principal Arterial- Major routes throught the state and on the NHS / Dryfork and foRT smITH

Freeway – limited access, highspped, high capacity / Possum Grape, Hot springs

Interstate- FHWA designation / 530 going to PB and I-30

What is Functional Classification?



Local- low speed, frequent driveways, parking, lowest adt/ Craighead county and eureka springs (also Newton CO)

Minor Collector- neighborhoods lower speeds, shorter trips, driveways higher adt / Gurdon (Clark County) Jonesboro

Major Collector- connect neighborhoods with arterials, moderate speed, short trips, serves schools store etc / Holly Springs and Texarkana

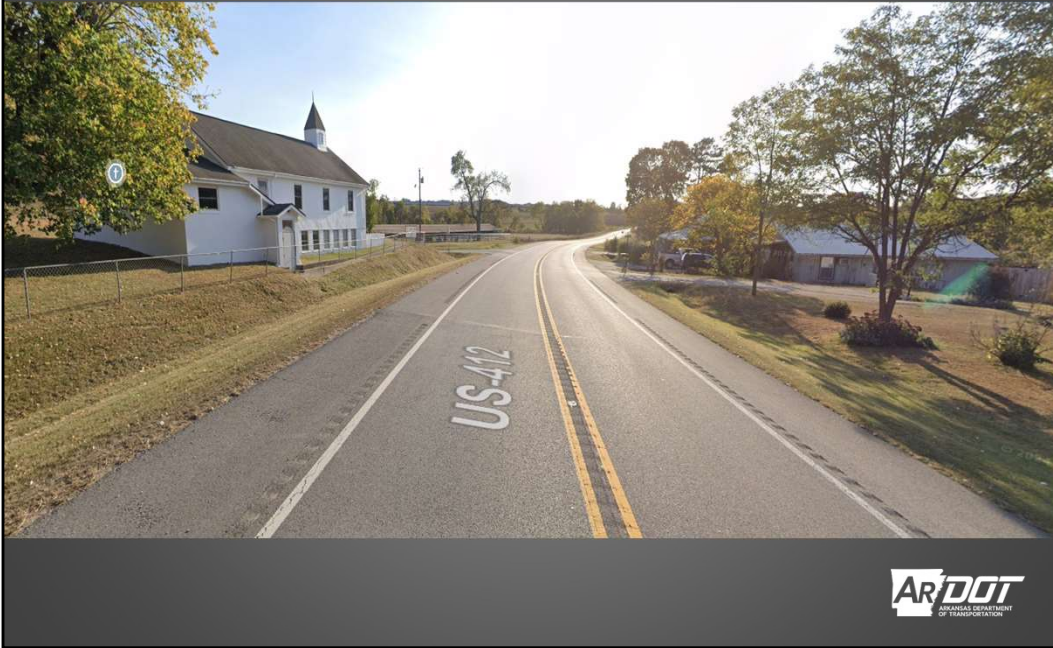
Minor Arterial- connect activity centers and close towns and cities higher speed / Erwin and Bentonville

Principal Arterial- Major routes throught the state and on the NHS / Dryfork and foRT smITH

Freeway – limited access, highspped, high capacity / Possum Grape, Hot springs

Interstate- FHWA designation / 530 going to PB and I-30

What is Functional Classification?



Local- low speed, frequent driveways, parking, lowest adt/ Craighead county and eureka springs (also Newton CO)

Minor Collector- neighborhoods lower speeds, shorter trips, driveways higher adt / Gurdon (Clark County) Jonesboro

Major Collector- connect neighborhoods with arterials, moderate speed, short trips, serves schools store etc / Holly Springs and Texarkana

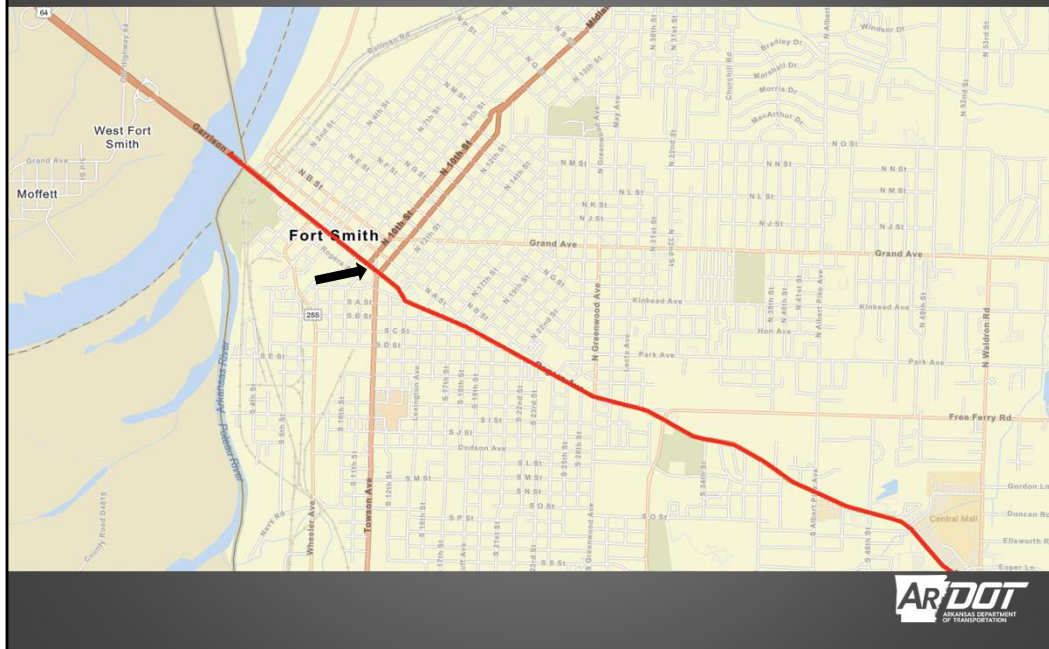
Minor Arterial- connect activity centers and close towns and cities higher speed / Erwin and Bentonville

Principal Arterial- Major routes throught the state and on the NHS / Dryfork and foRT smITH

Freeway – limited access, highspped, high capacity / Possum Grape, Hot springs

Interstate- FHWA designation / 530 going to PB and I-30

What is Functional Classification?



Local- low speed, frequent driveways, parking, lowest adt/ Craighead county and eureka springs (also Newton CO)

Minor Collector- neighborhoods lower speeds, shorter trips, driveways higher adt / Gurdon (Clark County) Jonesboro

Major Collector- connect neighborhoods with arterials, moderate speed, short trips, serves schools store etc / Holly Springs and Texarkana

Minor Arterial- connect activity centers and close towns and cities higher speed / Erwin and Bentonville

Principal Arterial- Major routes throught the state and on the NHS / Dryfork and foRT SMITH

Freeway – limited access, highspped, high capacity / Possum Grape, Hot springs

Interstate- FHWA designation / 530 going to PB and I-30

What is Functional Classification?



Local- low speed, frequent driveways, parking, lowest adt/ Craighead county and eureka springs (also Newton CO)

Minor Collector- neighborhoods lower speeds, shorter trips, driveways higher adt / Gurdon (Clark County) Jonesboro

Major Collector- connect neighborhoods with arterials, moderate speed, short trips, serves schools store etc / Holly Springs and Texarkana

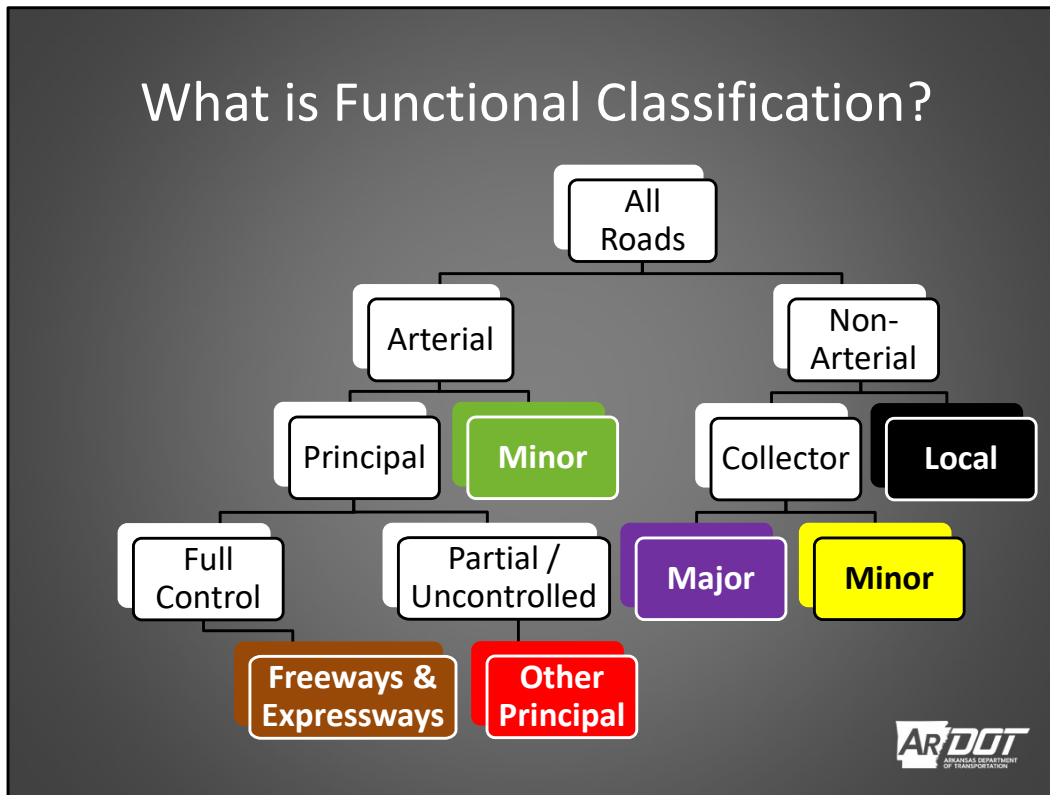
Minor Arterial- connect activity centers and close towns and cities higher speed / Erwin and Bentonville

Principal Arterial- Major routes throught the state and on the NHS / Dryfork and foRT smITH

Freeway – limited access, highspped, high capacity / Possum Grape, Hot springs

Interstate- FHWA designation / 530 going to PB and I-30

What is Functional Classification?



Local- low speed, frequent driveways, parking, lowest adt/ Craighead county and eureka springs (also Newton CO)

Minor Collector- neighborhoods lower speeds, shorter trips, driveways higher adt / Gurdon (Clark County) Jonesboro

Major Collector- connect neighborhoods with arterials, moderate speed, short trips, serves schools store etc / Holly Springs and Texarkana

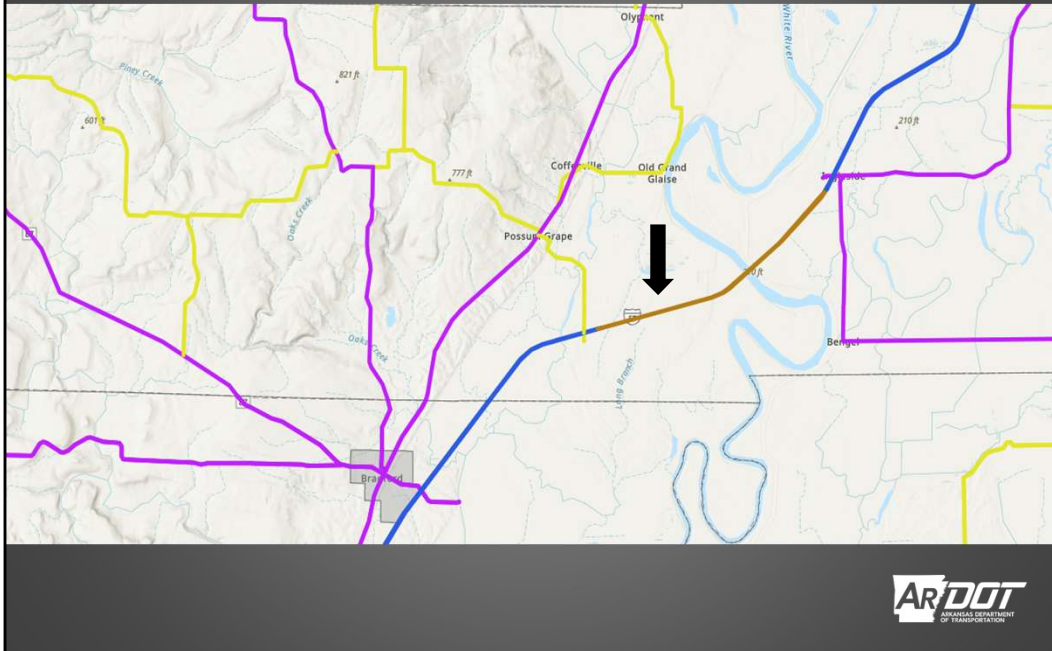
Minor Arterial- connect activity centers and close towns and cities higher speed / Erwin and Bentonville

Principal Arterial- Major routes throught the state and on the NHS / Dryfork and foRT smITH

Freeway – limited access, highspped, high capacity / Possum Grape, Hot springs

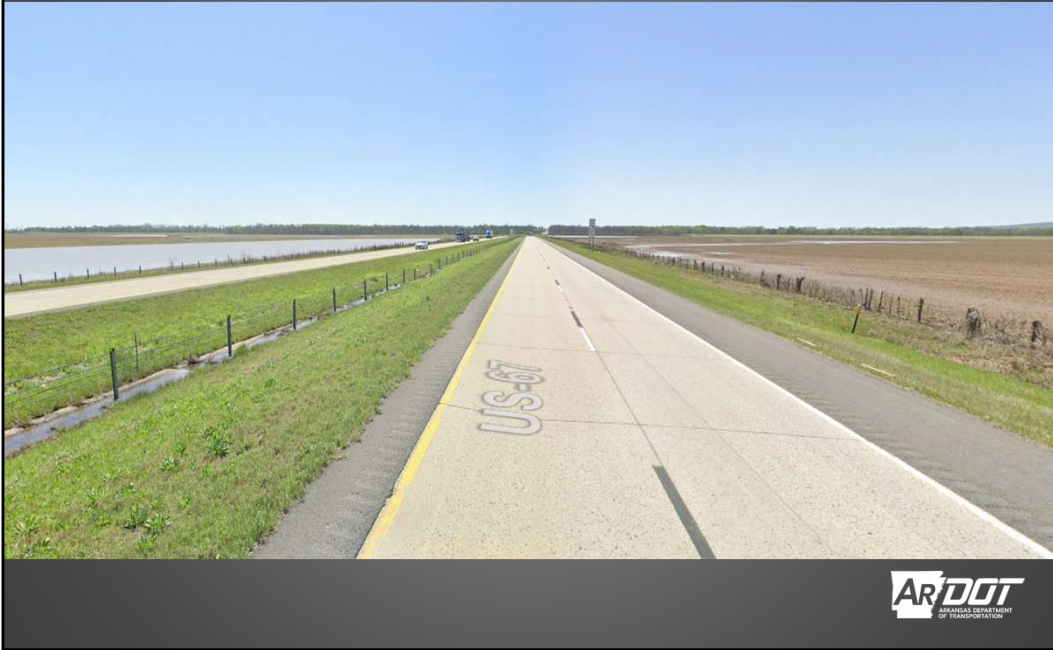
Interstate- FHWA designation / 530 going to PB and I-30

What is Functional Classification?



- Local- low speed, frequent driveways, parking, lowest adt/ Craighead county and eureka springs (also Newton CO)
- Minor Collector- neighborhoods lower speeds, shorter trips, driveways higher adt / Gurdon (Clark County) Jonesboro
- Major Collector- connect neighborhoods with arterials, moderate speed, short trips, serves schools store etc / Holly Springs and Texarkana
- Minor Arterial- connect activity centers and close towns and cities higher speed / Erwin and Bentonville
- Principal Arterial- Major routes throught the state and on the NHS / Dryfork and foRT smITH
- Freeway – limited access, highspped, high capacity / Possum Grape, Hot springs
- Interstate- FHWA designation / 530 going to PB and I-30

What is Functional Classification?



Local- low speed, frequent driveways, parking, lowest adt/ Craighead county and eureka springs (also Newton CO)

Minor Collector- neighborhoods lower speeds, shorter trips, driveways higher adt / Gurdon (Clark County) Jonesboro

Major Collector- connect neighborhoods with arterials, moderate speed, short trips, serves schools store etc / Holly Springs and Texarkana

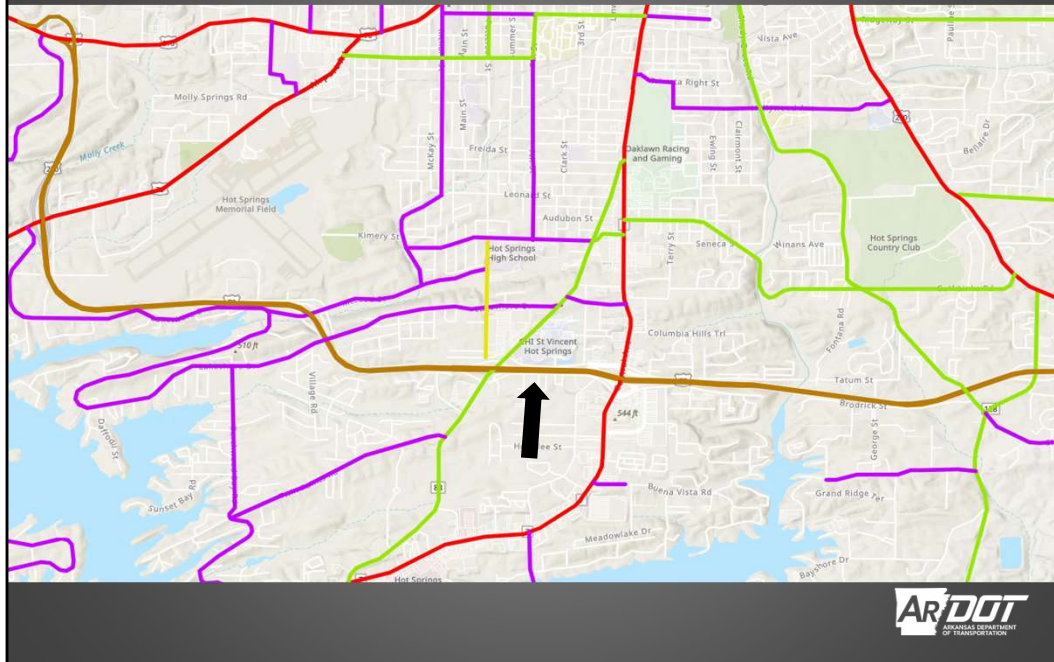
Minor Arterial- connect activity centers and close towns and cities higher speed / Erwin and Bentonville

Principal Arterial- Major routes throught the state and on the NHS / Dryfork and foRT smITH

Freeway – limited access, highspped, high capacity / Possum Grape, Hot springs

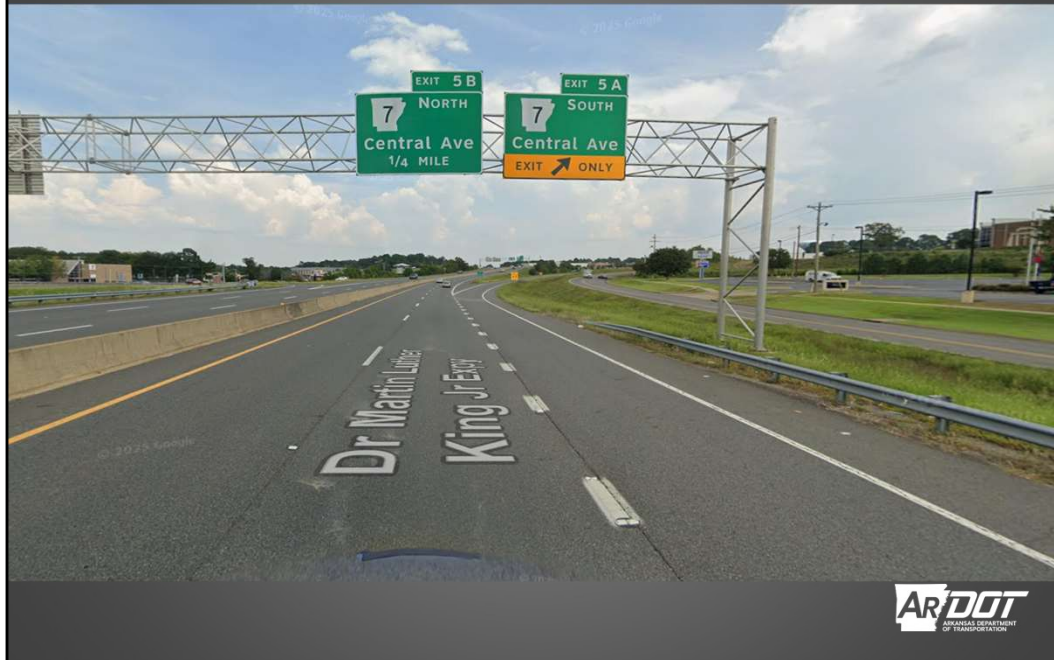
Interstate- FHWA designation / 530 going to PB and I-30

What is Functional Classification?



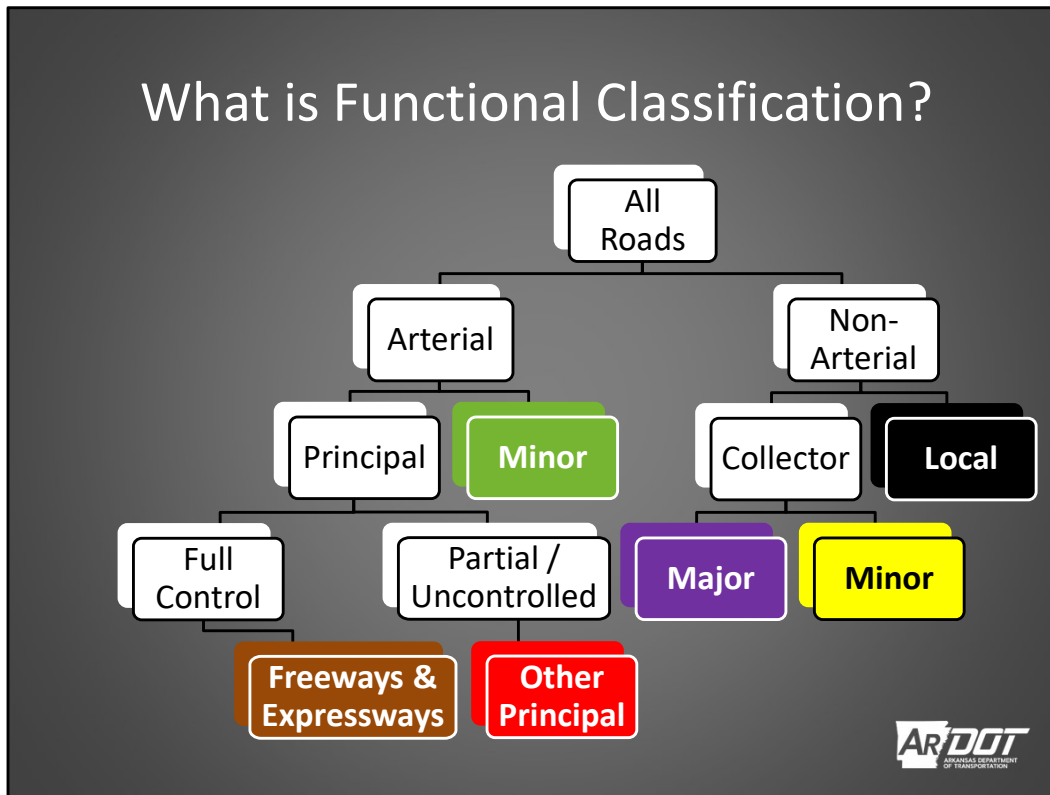
- Local- low speed, frequent driveways, parking, lowest adt/ Craighead county and eureka springs (also Newton CO)
- Minor Collector- neighborhoods lower speeds, shorter trips, driveways higher adt / Gurdon (Clark County) Jonesboro
- Major Collector- connect neighborhoods with arterials, moderate speed, short trips, serves schools store etc / Holly Springs and Texarkana
- Minor Arterial- connect activity centers and close towns and cities higher speed / Erwin and Bentonville
- Principal Arterial- Major routes throught the state and on the NHS / Dryfork and foRT smITH
- Freeway – limited access, highspped, high capacity / Possum Grape, Hot springs
- Interstate- FHWA designation / 530 going to PB and I-30

What is Functional Classification?



- Local- low speed, frequent driveways, parking, lowest adt/ Craighead county and eureka springs (also Newton CO)
- Minor Collector- neighborhoods lower speeds, shorter trips, driveways higher adt / Gurdon (Clark County) Jonesboro
- Major Collector- connect neighborhoods with arterials, moderate speed, short trips, serves schools store etc / Holly Springs and Texarkana
- Minor Arterial- connect activity centers and close towns and cities higher speed / Erwin and Bentonville
- Principal Arterial- Major routes throught the state and on the NHS / Dryfork and foRT smITH
- Freeway – limited access, highspped, high capacity / Possum Grape, Hot springs
- Interstate- FHWA designation / 530 going to PB and I-30

What is Functional Classification?



Local- low speed, frequent driveways, parking, lowest adt/ Craighead county and eureka springs (also Newton CO)

Minor Collector- neighborhoods lower speeds, shorter trips, driveways higher adt / Gurdon (Clark County) Jonesboro

Major Collector- connect neighborhoods with arterials, moderate speed, short trips, serves schools store etc / Holly Springs and Texarkana

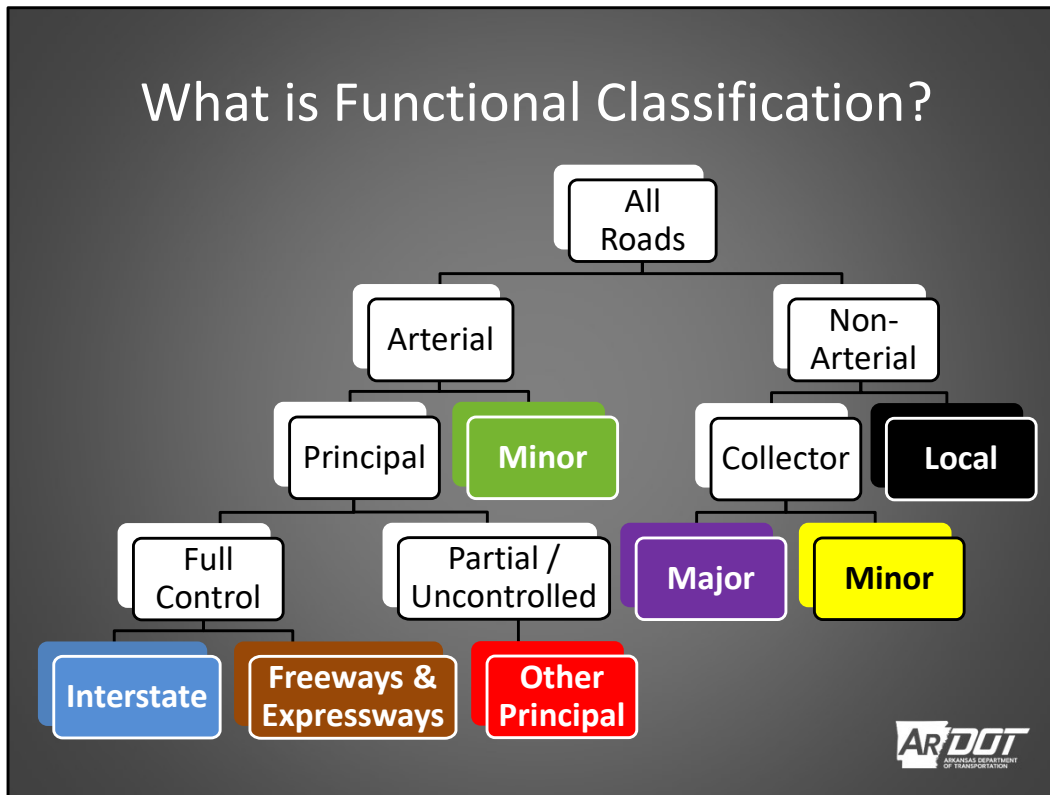
Minor Arterial- connect activity centers and close towns and cities higher speed / Erwin and Bentonville

Principal Arterial- Major routes throught the state and on the NHS / Dryfork and foRT smITH

Freeway – limited access, highspped, high capacity / Possum Grape, Hot springs

Interstate- FHWA designation / 530 going to PB and I-30

What is Functional Classification?



Local- low speed, frequent driveways, parking, lowest adt/ Craighead county and eureka springs (also Newton CO)

Minor Collector- neighborhoods lower speeds, shorter trips, driveways higher adt / Gurdon (Clark County) Jonesboro

Major Collector- connect neighborhoods with arterials, moderate speed, short trips, serves schools store etc / Holly Springs and Texarkana

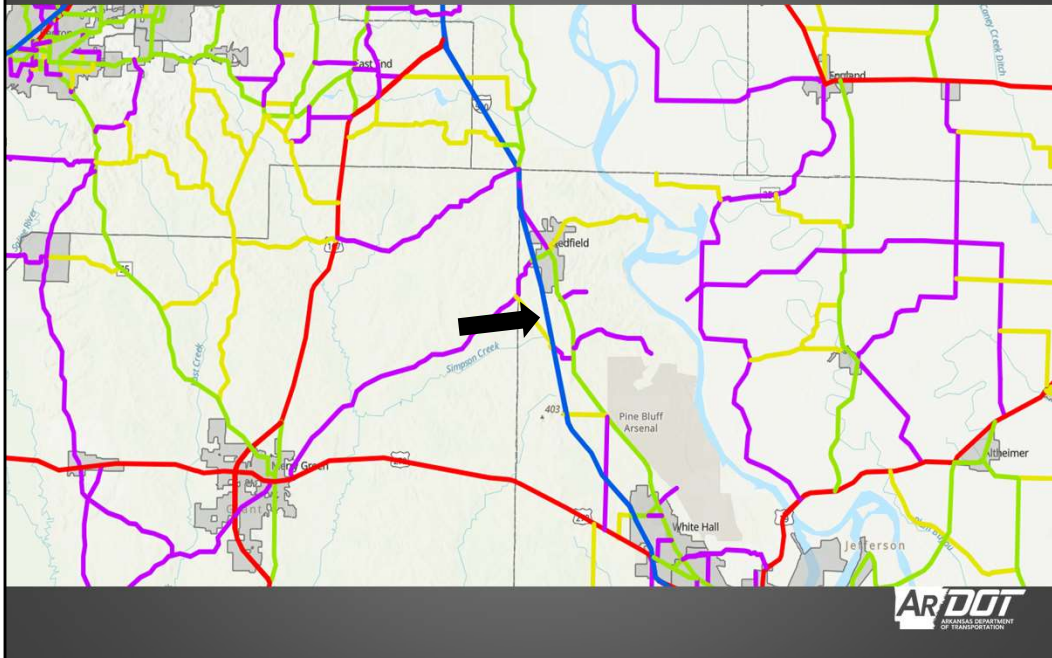
Minor Arterial- connect activity centers and close towns and cities higher speed / Erwin and Bentonville

Principal Arterial- Major routes throught the state and on the NHS / Dryfork and foRT smITH

Freeway – limited access, highspped, high capacity / Possum Grape, Hot springs

Interstate- FHWA designation / 530 going to PB and I-30

What is Functional Classification?



Local- low speed, frequent driveways, parking, lowest adt/ Craighead county and eureka springs (also Newton CO)

Minor Collector- neighborhoods lower speeds, shorter trips, driveways higher adt / Gurdon (Clark County) Jonesboro

Major Collector- connect neighborhoods with arterials, moderate speed, short trips, serves schools store etc / Holly Springs and Texarkana

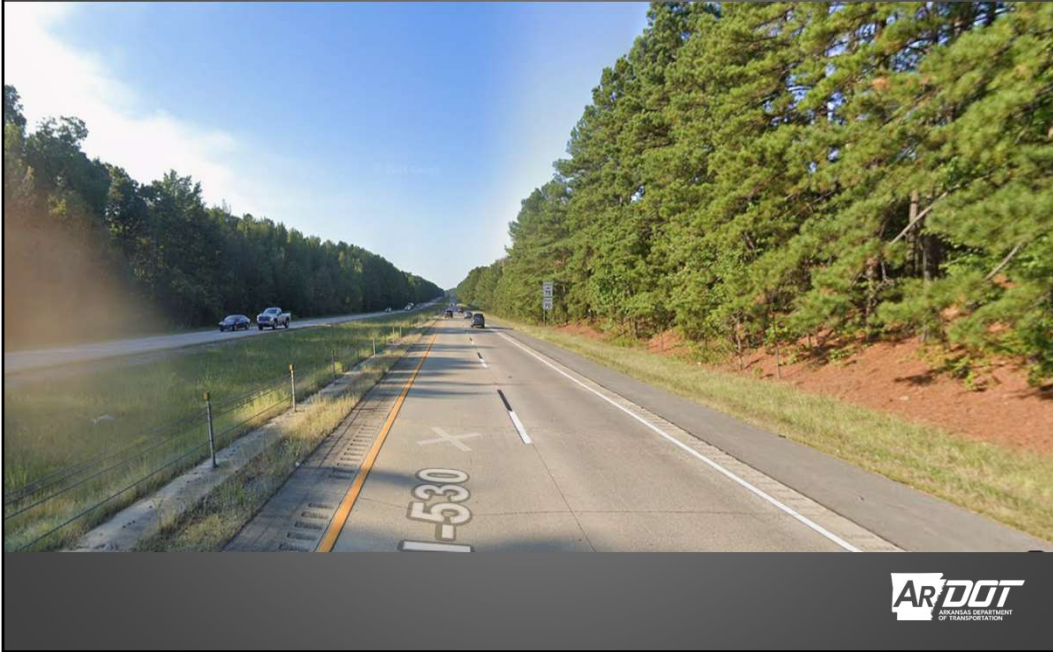
Minor Arterial- connect activity centers and close towns and cities higher speed / Erwin and Bentonville

Principal Arterial- Major routes throught the state and on the NHS / Dryfork and foRT smITH

Freeway – limited access, highspped, high capacity / Possum Grape, Hot springs

Interstate- FHWA designation / 530 going to PB and I-30

What is Functional Classification?



Local- low speed, frequent driveways, parking, lowest adt/ Craighead county and eureka springs (also Newton CO)

Minor Collector- neighborhoods lower speeds, shorter trips, driveways higher adt / Gurdon (Clark County) Jonesboro

Major Collector- connect neighborhoods with arterials, moderate speed, short trips, serves schools store etc / Holly Springs and Texarkana

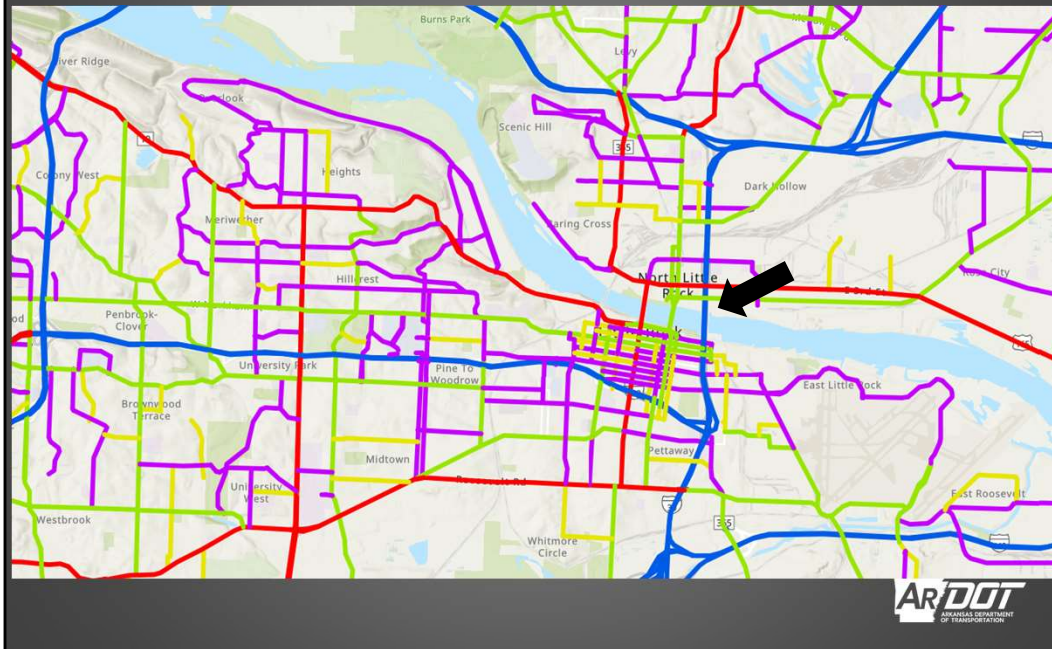
Minor Arterial- connect activity centers and close towns and cities higher speed / Erwin and Bentonville

Principal Arterial- Major routes throught the state and on the NHS / Dryfork and foRT smITH

Freeway – limited access, highspped, high capacity / Possum Grape, Hot springs

Interstate- FHWA designation / 530 going to PB and I-30

What is Functional Classification?



Local- low speed, frequent driveways, parking, lowest adt/ Craighead county and eureka springs (also Newton CO)

Minor Collector- neighborhoods lower speeds, shorter trips, driveways higher adt / Gurdon (Clark County) Jonesboro

Major Collector- connect neighborhoods with arterials, moderate speed, short trips, serves schools store etc / Holly Springs and Texarkana

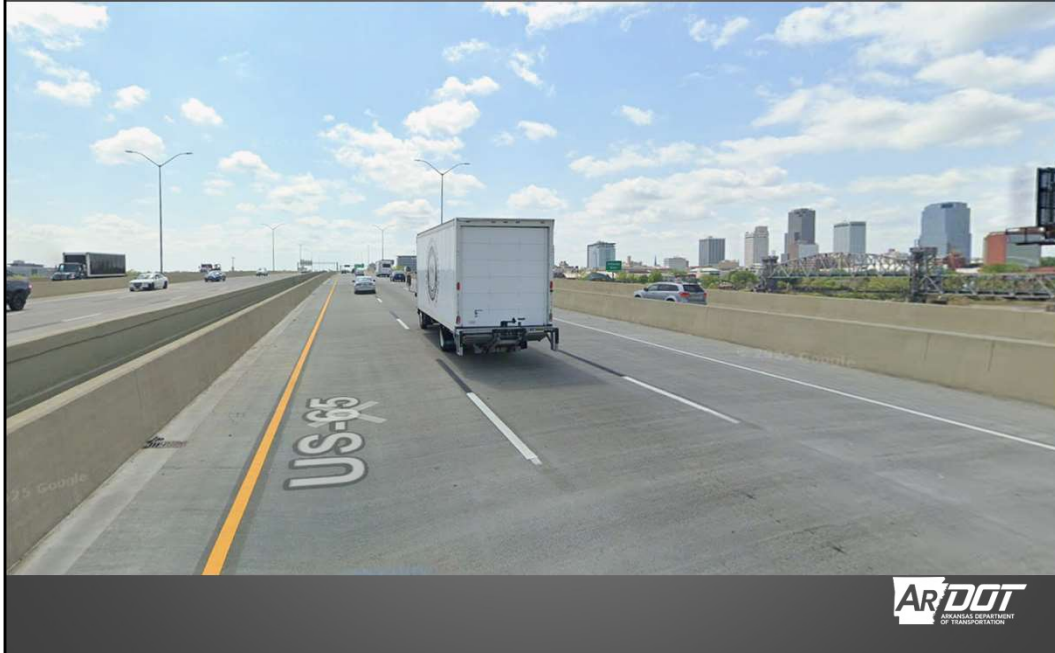
Minor Arterial- connect activity centers and close towns and cities higher speed / Erwin and Bentonville

Principal Arterial- Major routes throught the state and on the NHS / Dryfork and foRT smITH

Freeway – limited access, highspped, high capacity / Possum Grape, Hot springs

Interstate- FHWA designation / 530 going to PB and I-30

What is Functional Classification?



Local- low speed, frequent driveways, parking, lowest adt/ Craighead county and eureka springs (also Newton CO)

Minor Collector- neighborhoods lower speeds, shorter trips, driveways higher adt / Gurdon (Clark County) Jonesboro

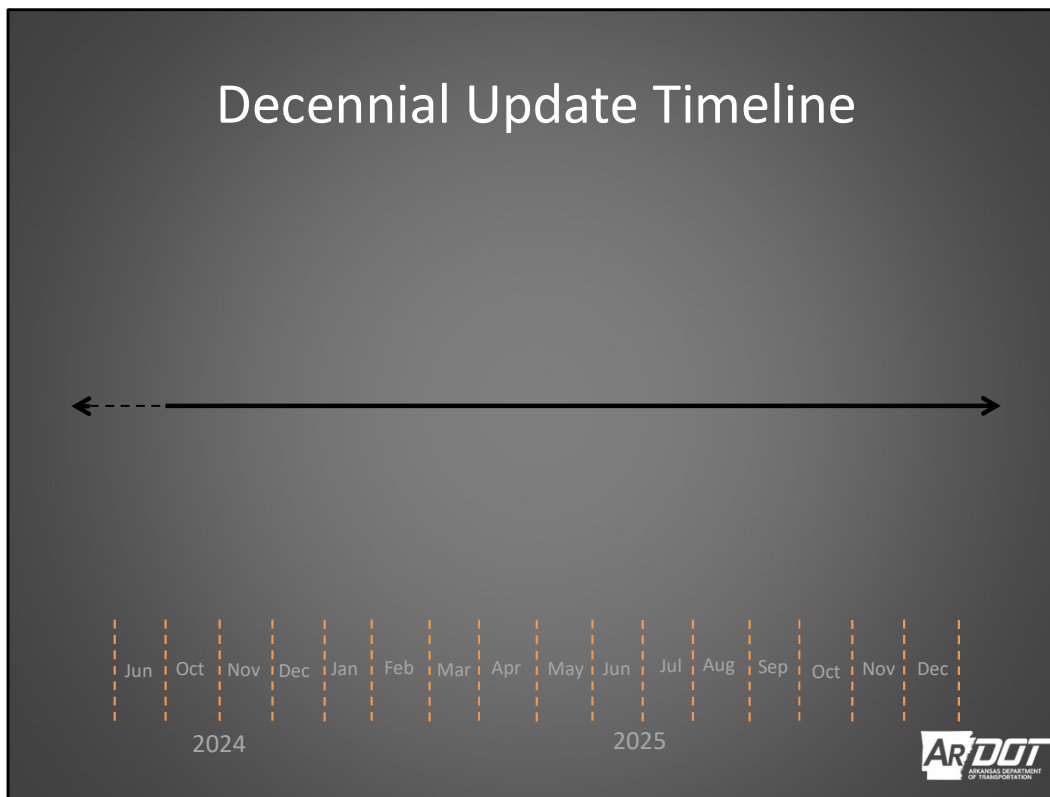
Major Collector- connect neighborhoods with arterials, moderate speed, short trips, serves schools store etc / Holly Springs and Texarkana

Minor Arterial- connect activity centers and close towns and cities higher speed / Erwin and Bentonville

Principal Arterial- Major routes throught the state and on the NHS / Dryfork and foRT smITH

Freeway – limited access, highspped, high capacity / Possum Grape, Hot springs

Interstate- FHWA designation / 530 going to PB and I-30



Efficiency of Travel: Trip makers will typically seek out roadways that allow them to travel to their destinations with as little delay as possible and by the shortest travel time. Arterial roadways provide this kind of service, often in the form of fully or partially controlled access highways, with no or very few intersecting roadways to hinder traffic flow. Therefore, a high percentage of the length of a long-distance trip will be made on Arterials. In contrast, travelers making shorter trips tend to use Local and/or Collector roadways for a much higher proportion of the trip length than Arterial roads.

Access Points: Arterials primarily serve long-distance travel and are typically designed as either access controlled or partially access controlled facilities with limited locations at which vehicles can enter or exit the roadway (typically via on- or off-ramps). In instances where limited or partial access control is not provided, signalized intersections are used to control traffic flow, with the Arterial given the majority of the green time.

Speed Limit: In general, there is a relationship between posted speed limits and functional classification. Arterials typically have higher posted speed limits as vehicles encounter few or no at-grade intersections. The absence of cross-traffic and driveways allows for higher rates of speed, which provides mobility, especially for long-distance travel. In contrast, because their primary role is to provide access, Locals are lined with intersecting access points in the form of driveways,

intersecting roadways, cross walks and transfer points for buses and other modes. Due to the frequency of traffic turns, speed limits are kept low to promote safe traffic operations. Speed limits on any non-access-controlled roadways are also influenced by the mix of vehicles and modes that use them.

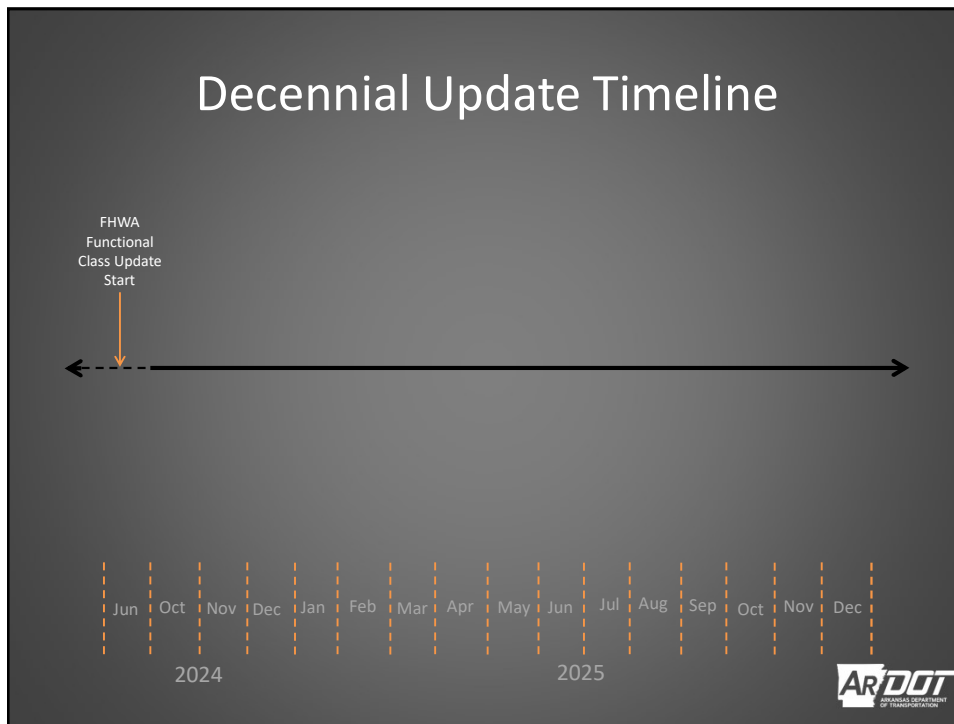
Route Spacing: Directly related to the concept of channelization of traffic throughout a network is the concept of distance (or spacing) between routes. For a variety of reasons, it is not feasible to provide Arterial facilities to accommodate every possible trip in the most direct manner possible or in the shortest amount of time. Ideally, regular and logical spacing between routes of different classifications exists. Arterials are typically spaced at greater intervals than Collectors, which are spaced at much greater intervals than Locals. This spacing varies considerably for different areas; in densely populated urban areas, spacing of all route types is smaller and generally more consistent than the spacing in sparsely developed rural areas. Geographic barriers greatly influence the layout and spacing of roadways.

Usage (Annual Average Daily Traffic [AADT] Volumes and Vehicle Miles of Travel [VMT]): Arterials serve a high share of longer distance trips and daily vehicle miles of travel. In rural areas, Arterials typically account for approximately half of the daily vehicle miles of travel; in urban areas, this percentage is often higher. Collectors account for the next largest percentage of travel. Urban Area Collectors account for somewhat less (5 to 15 percent), while the percentage for Rural Area Collectors is typically in the 20 to 30 percent range. Lastly, by definition, Local Roads in rural areas typically serve very low density, dispersed developments with relatively low traffic volume. In contrast, the Urban Local Road network, with higher roadway centerline miles and higher density spacing, serves denser land uses and therefore accounts for a larger proportion of travel than its rural counterpart.

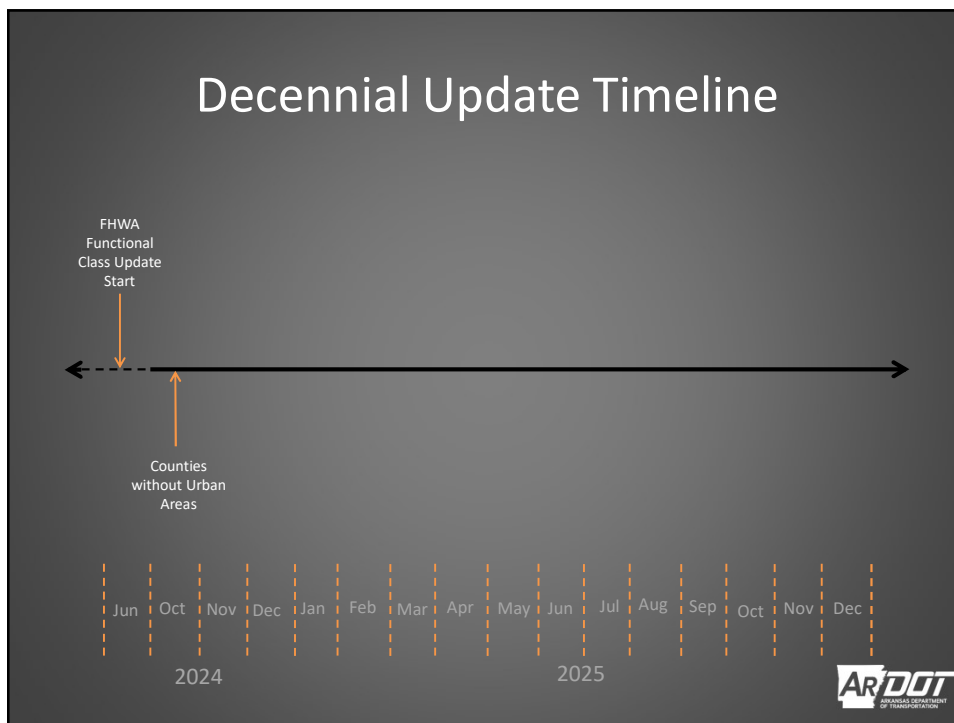
Number of Travel Lanes: Roadways are designed and constructed according to their expected function. If a roadway is expected to function as an Arterial, it is designed for high capacity, with multiple travel lanes. In general, Arterials are more likely to have a greater number of travel lanes than Collectors, and Collectors are more likely to have a greater number of travel lanes than Locals. It should also be noted that the relationship between functional classification and number of lanes is stronger in urban areas than it is in rural areas.

Regional and Statewide Significance: Highly significant roadways connect large activity centers and carry longer-distance travel between and through regions and States. Arterials carry the vast majority of trips that travel through a given State, while Local Roads do not easily facilitate statewide travel.

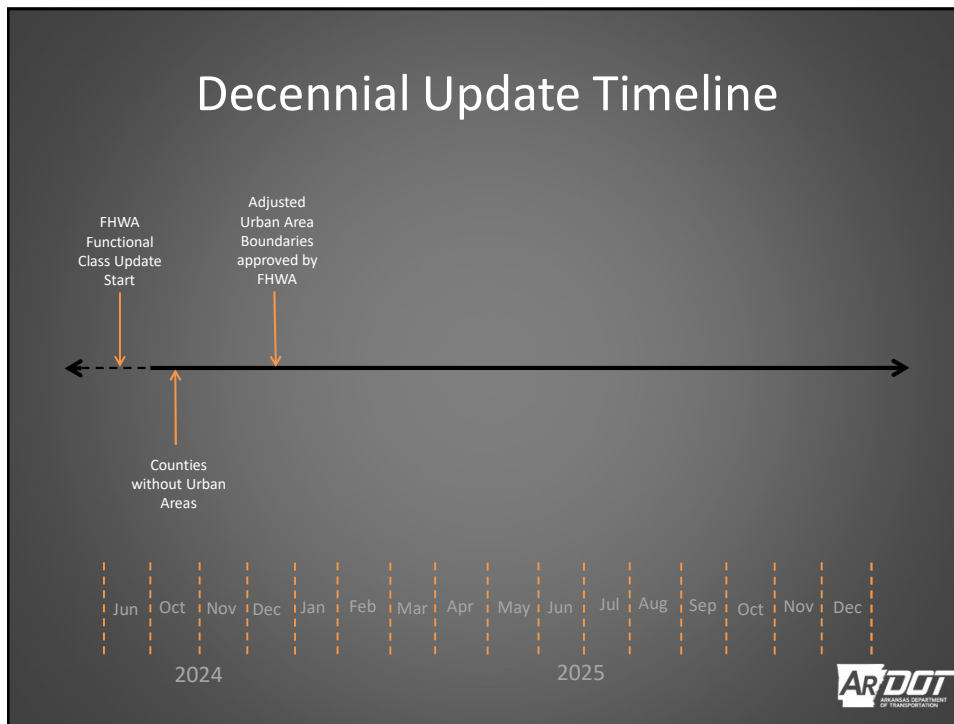
And finally System Continuity. We do not want the road designs and pattern changing at every County line



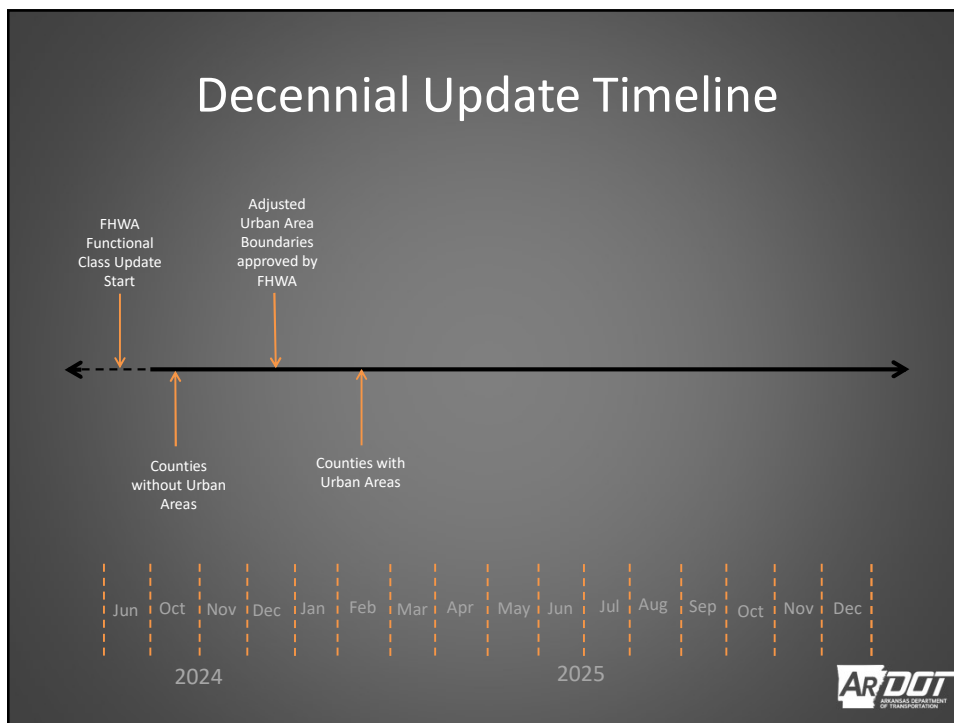
70



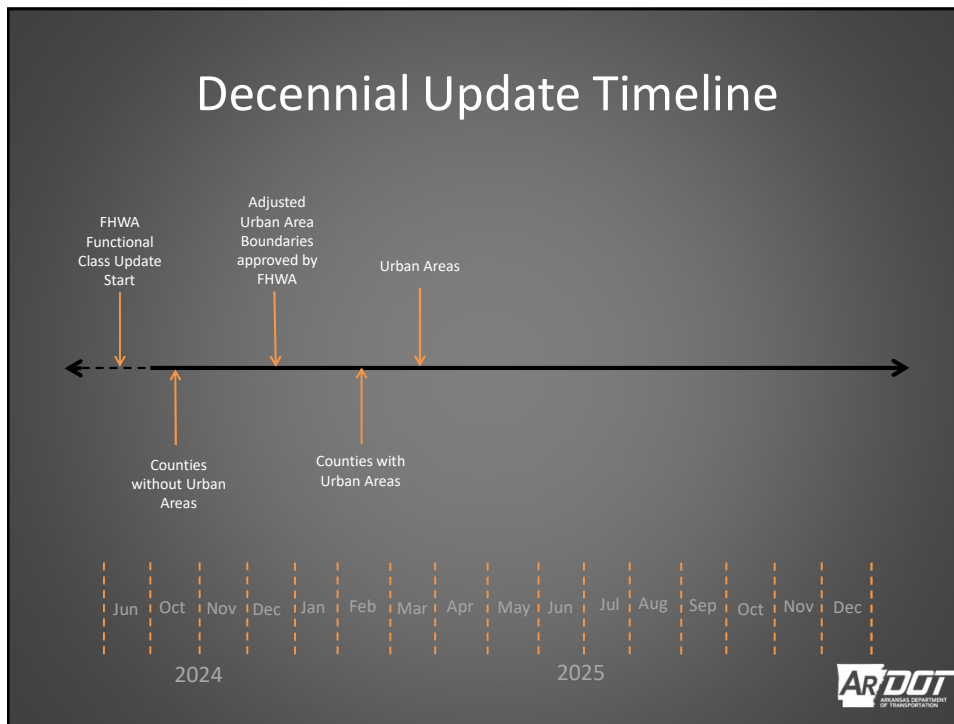
71



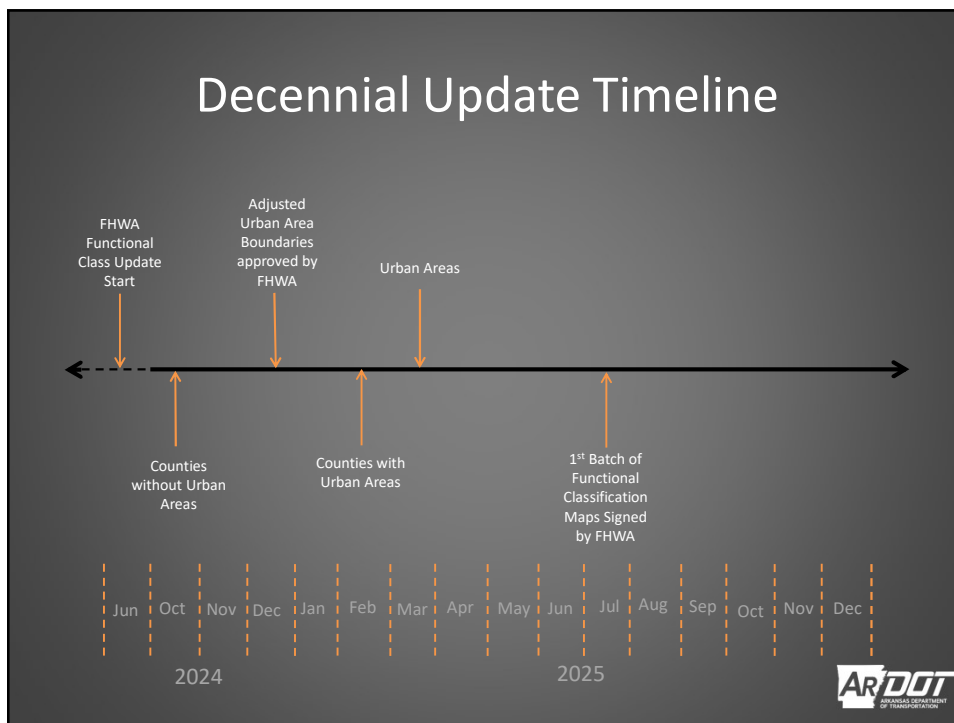
72



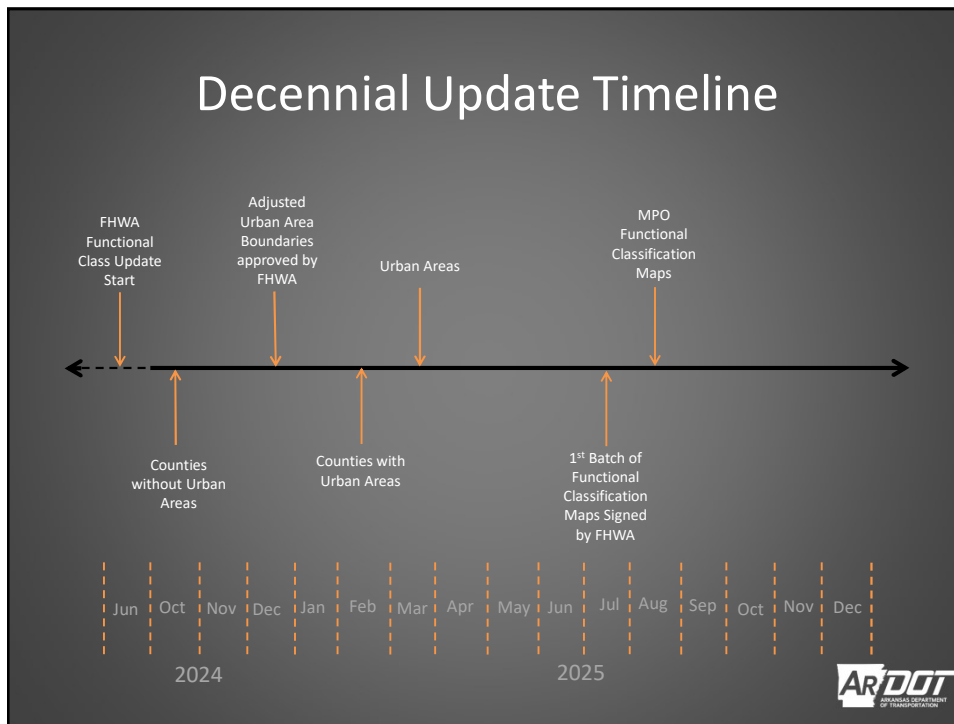
73



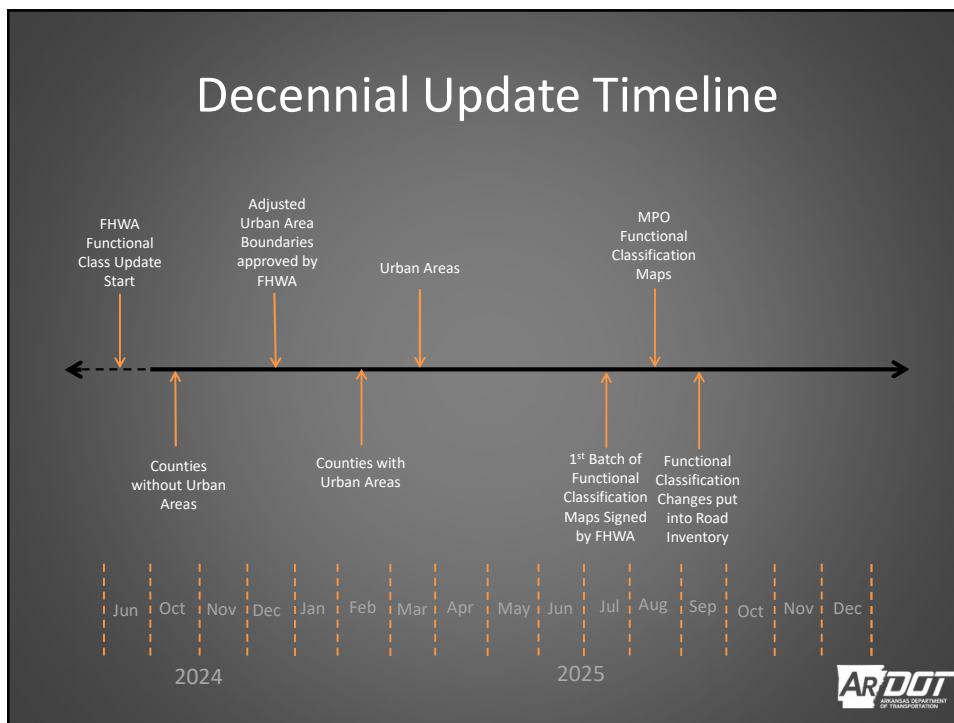
74



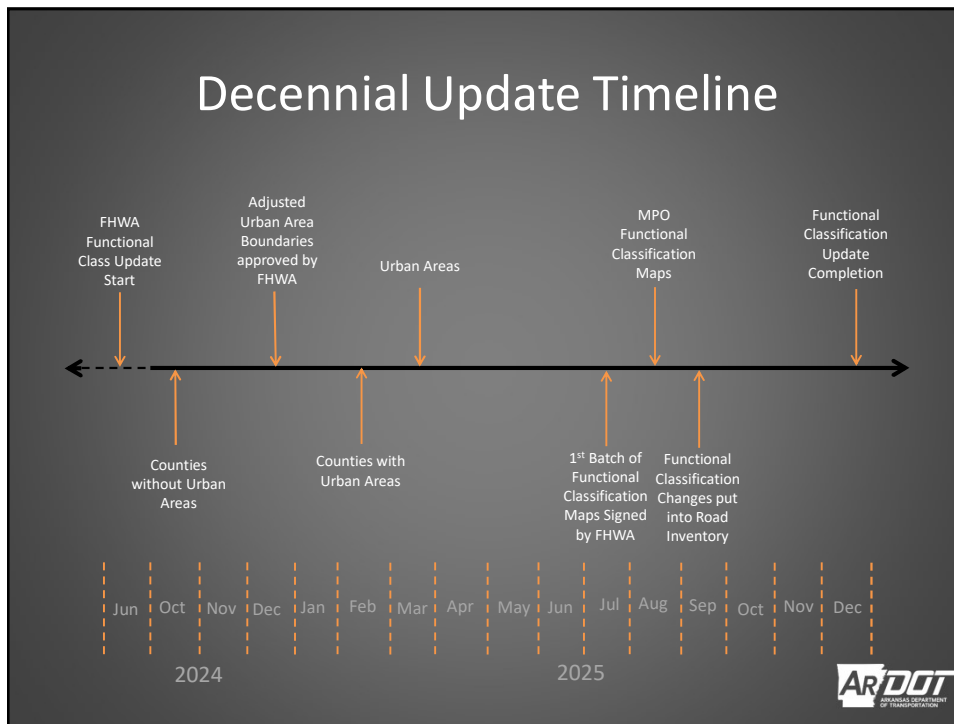
75



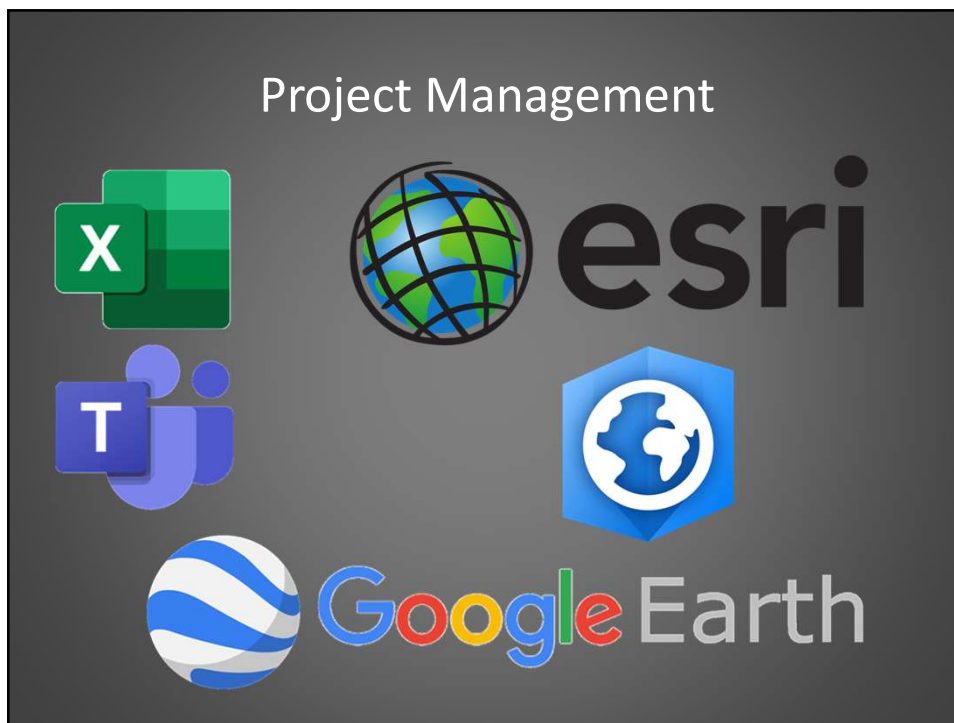
76



77



78



79

Project Management

Functional Class Map Production 7/15/2025																		
MPO Area	Basemap Status	On-System		Off-System		Proposed FC Map	Staff Approval	Map Printed?	Initial Division Review	Division Approval	Date sent Public		Signature					
		Urban/Rural	Urban/Rural	Urban/Rural	FC Lines						FC Lines	FC Chnages		Official	Signature			
Percent Complete	100%	100%	100%	100%	100%	99%	98%	97%	89%	77%	95%	43%	41%	21%	0%	21%		
4 Calhoun	Done	Done	Done	Done	Done	Done	Done	Done	Done	Done	Done	12/05/24	Done	02/10/25	Done	To Do	Done	https://arc...
5 Chester	Done	Done	Done	Done	Done	Done	Done	Done	Done	Done	Done	11/19/24	Done	02/10/25	Done	To Do	Done	https://arc...
6 Clay	Done	Done	Done	Done	Done	Done	Done	In Progress	Done	Done	Done	12/05/24	To Do	To Do	To Do	To Do	Done	https://arc...
7 Cleveland	Done	Done	Done	Done	Done	Done	Done	Done	Done	Done	Done	11/19/24	Done	02/10/25	Done	To Do	Done	https://arc...
8 Dallas	Done	Done	Done	Done	Done	Done	Done	Done	Done	Done	Done	07/14/25	In Progress	To Do	To Do	To Do	Done	https://arc...
9 Dallas	Done	Done	Done	Done	Done	Done	Done	Done	Done	Done	Done	12/05/24	Done	02/10/25	Done	To Do	Done	https://arc...
10 Franklin	Done	Done	Done	Done	Done	Done	Done	Done	Done	Done	Done	09/07/25	Done	07/03/25	Done	To Do	Done	https://arc...
11 Fulton	Done	Done	Done	Done	Done	Done	Done	Done	Done	Done	Done	11/19/24	In Progress	To Do	To Do	To Do	Done	https://arc...
12 Grant	Done	Done	Done	Done	Done	Done	Done	Done	Done	Done	Done	11/19/24	Done	02/10/25	Done	To Do	Done	https://arc...
13 Howard	Done	Done	Done	Done	Done	Done	Done	Done	Done	Done	Done	11/19/24	Done	02/10/25	Done	To Do	Done	https://arc...
14 Haral	Done	Done	Done	Done	Done	Done	Done	Done	Done	Done	Done	02/25/25	Done	07/03/25	Done	To Do	Done	https://arc...
15 Lafayette	Done	Done	Done	Done	Done	Done	Done	Done	Done	Done	Done	11/19/24	Done	02/10/25	Done	To Do	Done	https://arc...
16 Lee	Done	Done	Done	Done	Done	Done	Done	Done	Done	Done	Done	11/19/24	Done	02/10/25	Done	To Do	Done	https://arc...
17 Lincoln	Done	Done	Done	Done	Done	Done	Done	Done	Done	Done	Done	03/04/25	Done	07/03/25	Done	To Do	Done	https://arc...
18 Little River	Done	Done	Done	Done	Done	Done	Done	Done	Done	Done	Done	02/25/25	Done	07/03/25	Done	To Do	Done	https://arc...
19 Logan	Done	Done	Done	Done	Done	Done	Done	Done	Done	Done	Done	11/21/24	Done	02/10/25	Done	To Do	Done	https://arc...
20 Madison	Done	Done	Done	Done	Done	Done	Done	Done	Done	Done	Done	07/14/25	In Progress	To Do	To Do	To Do	Done	https://arc...
21 Monroe	Done	Done	Done	Done	Done	Done	Done	Done	Done	Done	Done	05/07/25	In Progress	To Do	To Do	To Do	Done	https://arc...
22 Montgomery	Done	Done	Done	Done	Done	Done	Done	Done	Done	Done	Done	07/10/25	In Progress	To Do	To Do	To Do	Done	https://arc...
23 Newala	Done	Done	Done	Done	Done	Done	Done	Done	Done	Done	Done	05/07/25	Done	07/03/25	Done	To Do	Done	https://arc...
24 Newton	Done	Done	Done	Done	Done	Done	Done	Done	Done	Done	Done	11/21/24	Done	02/10/25	Done	To Do	Done	https://arc...
25 Perry	Done	Done	Done	Done	Done	Done	Done	Done	Done	Done	Done	11/21/24	Done	02/10/25	Done	To Do	Done	https://arc...
26 Pike	Done	Done	Done	Done	Done	Done	Done	Done	Done	Done	Done	07/14/25	In Progress	To Do	To Do	To Do	Done	https://arc...
27 Raleigh	Done	Done	Done	Done	Done	Done	Done	Done	Done	Done	Done	05/07/25	In Progress	To Do	To Do	To Do	Done	https://arc...
28 Scott	Done	Done	Done	Done	Done	Done	Done	Done	Done	Done	Done	11/05/24	Done	02/10/25	Done	To Do	Done	https://arc...
29 Sealey	Done	Done	Done	Done	Done	Done	Done	Done	Done	Done	Done	11/25/24	Done	02/10/25	Done	To Do	Done	https://arc...
30 Sharp	Done	Done	Done	Done	Done	Done	Done	Done	Done	Done	Done	11/21/24	Done	02/10/25	Done	To Do	Done	https://arc...
31 Stone	Done	Done	Done	Done	Done	Done	Done	Done	Done	Done	Done	11/25/24	Done	07/03/25	Done	To Do	Done	https://arc...
32 Van Buren	Done	Done	Done	Done	Done	Done	Done	Done	Done	Done	Done	11/25/24	Done	02/10/25	Done	To Do	Done	https://arc...
33 Woodruff	Done	Done	Done	Done	Done	Done	Done	Done	Done	Done	Done	11/21/24	Done	02/10/25	Done	To Do	Done	https://arc...
34 Craighead	Done	Done	Done	Done	Done	Done	Done	Done	In Progress	To Do	To Do	To Do	To Do	To Do	To Do	To Do	To Do	https://arc...
35 Crawford	Done	Done	Done	Done	Done	Done	Done	Done	In Progress	To Do	To Do	To Do	To Do	To Do	To Do	To Do	To Do	https://arc...

80

Project Management

Basemap Status	On-System Urban/Rural	Off-System Urban/Rural	On-System FC Lines	Off-System FC Lines	Proposed FC Chnages	FC Map Drafted
100%	100%	100%	100%	100%	100%	99%
Done	Done	Done	Done	Done	Done	Done

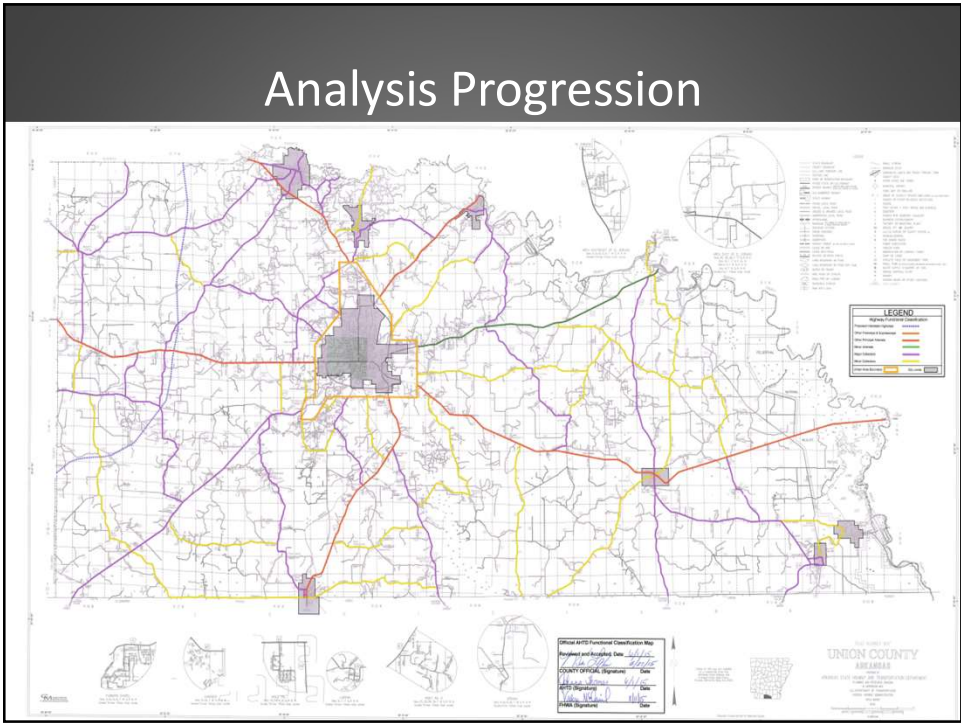
Staff Approval	Map Printed?	Initial Division Review	Division Approval	Date sent to Public Official
98%	97%	89%	77%	79%
Done	Done	Done	Done	12/05/24

Public Official Signature	Date sent to FHWA	Approved by FHWA	ARDOT Signature	FHWA Signature	Map Link
43%	41%	21%	0%	21%	
Done	02/10/25	Done	To Do	Done	https://arc...

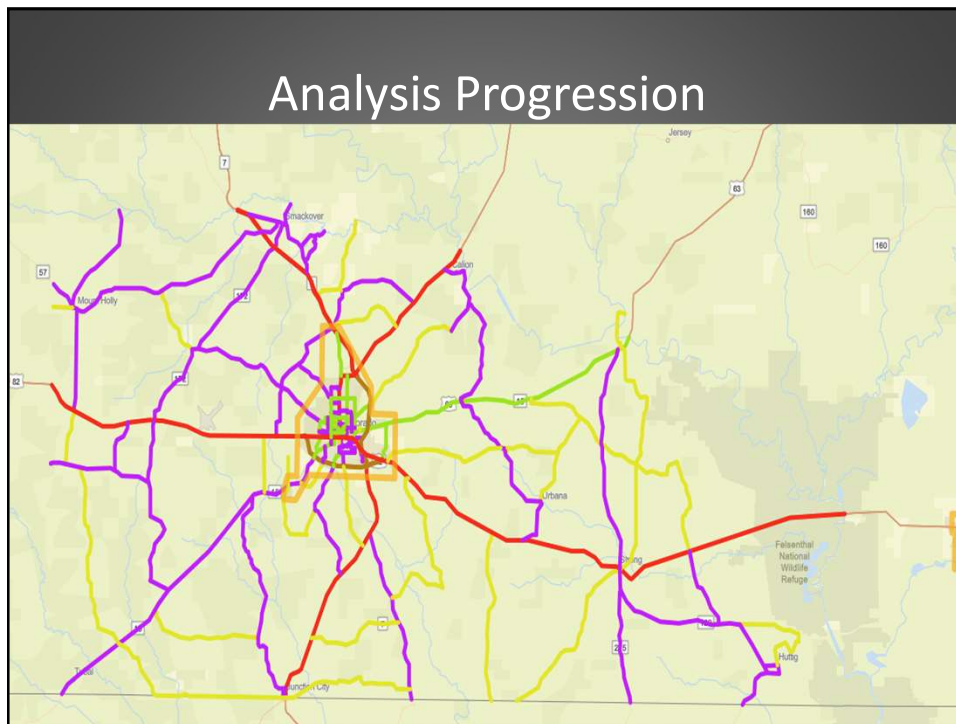
81



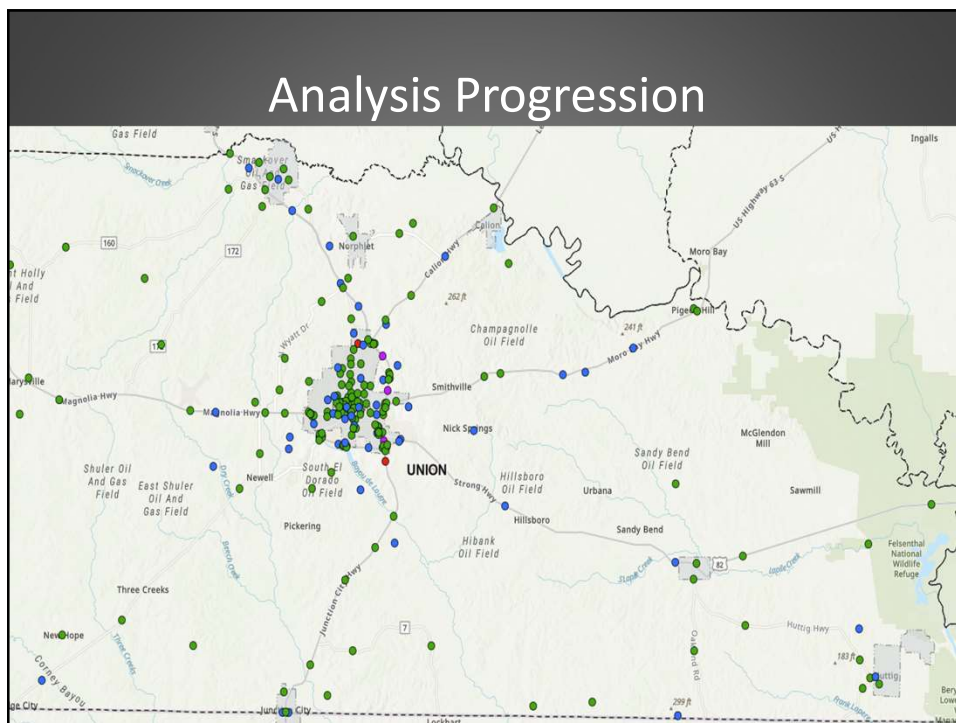
82



83

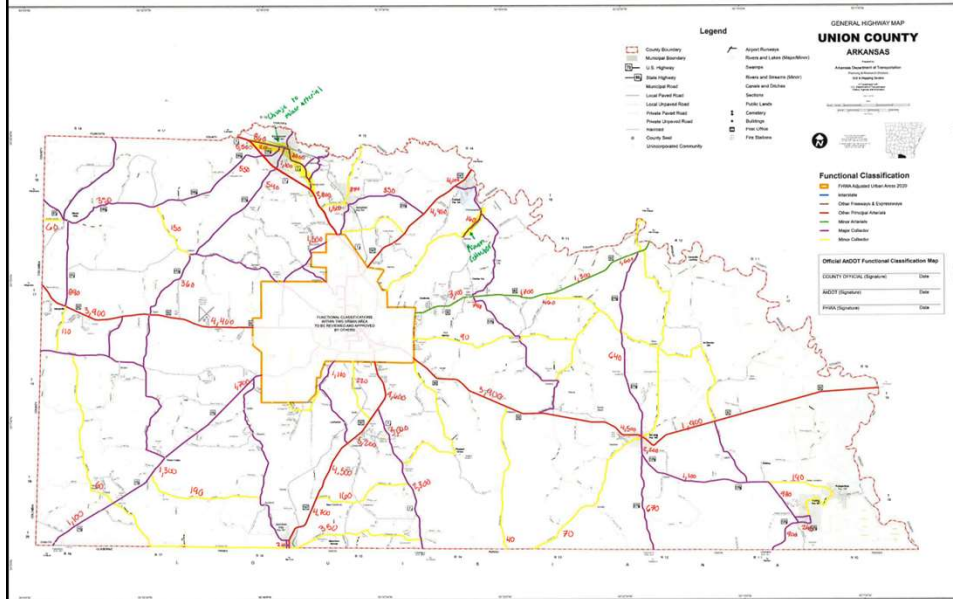


84



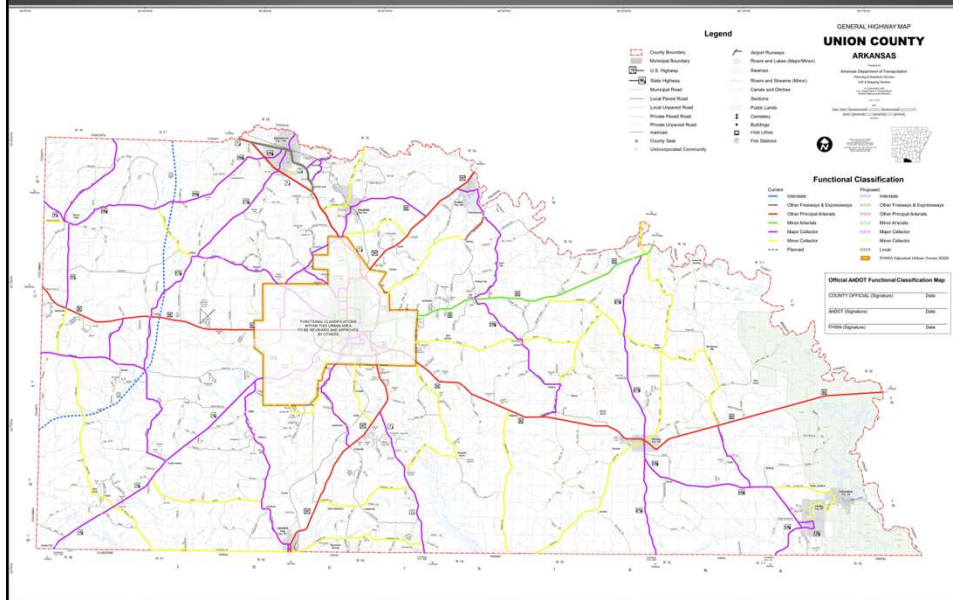
85

Analysis Progression



86

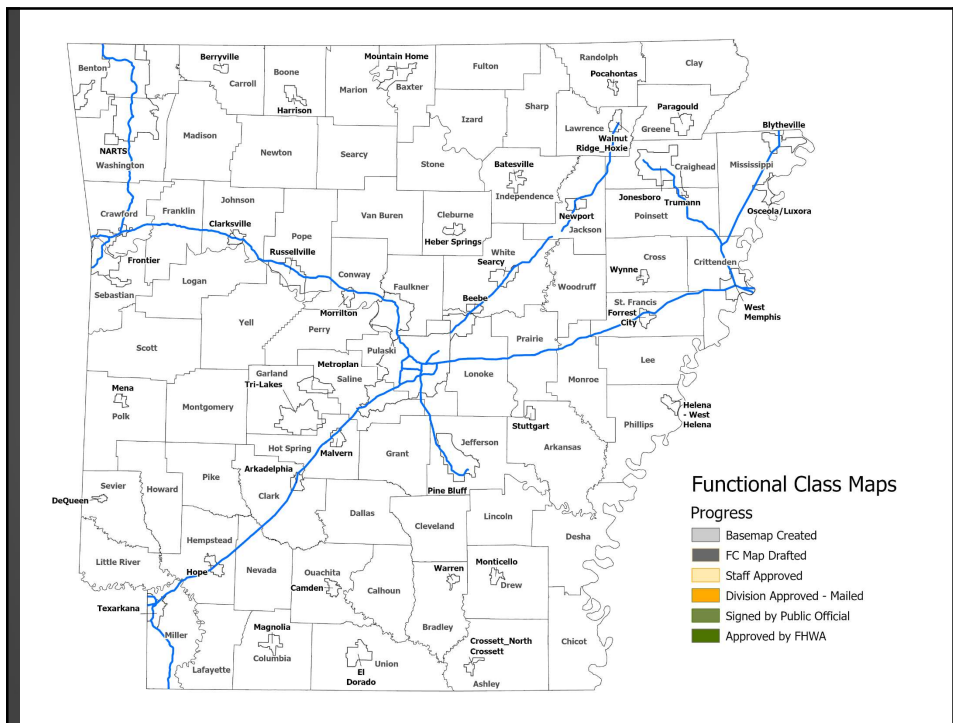
Analysis Progression



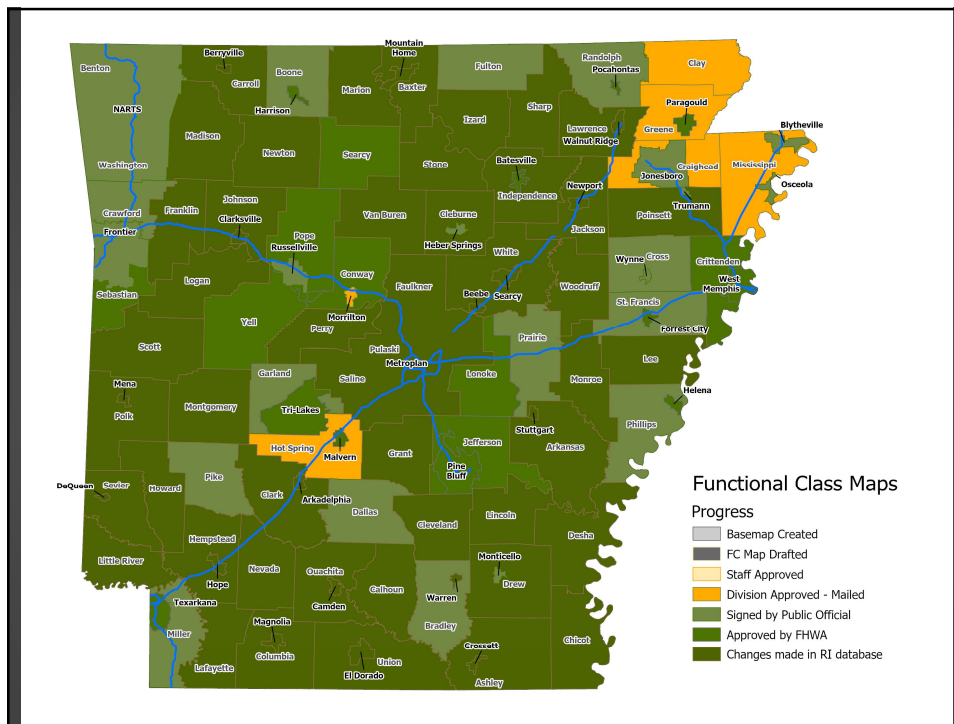
87

Project Management

88



89



90

Big Thanks To:

<p><u>Basemap Creation</u> Tim Mahan Terry Vittitow Doug Beaty</p>	<p><u>Team Leads</u> Jake Mashburn Cameron Webb</p>	<p><u>Correspondence</u> India Deadmon</p>
<p><u>Draft FC Maps</u> Amber Vinson</p>	<p><u>Roadway Inventory</u> Lindsay McCarthy Jamesha Jordan</p>	<p><u>ARDOT Map Review</u> Travis Brooks</p>
<p><u>Database QA/QC</u> Cynthia Garcia</p>	<p><u>Supervision</u> Sharon Hawkins Jacqueline Hou</p>	<p><u>FHWA Map Review</u> John Spears Kim Meaders</p>
	<p><u>Print Production</u> Atticus Heifner</p>	

91

Questions?

