

ARKANSAS DEPARTMENT OF TRANSPORTATION
EQUIPMENT AND PROCUREMENT OFFICE
LITTLE ROCK, ARKANSAS

May 18, 2026

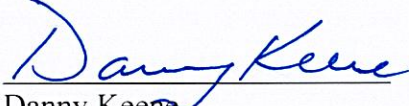
NOTICE TO BIDDERS
ADDENDUM

Bid Number: M-26-039H
NEA Engineer Office Renovation Job 42-216
Opening Date: May 19, 2026

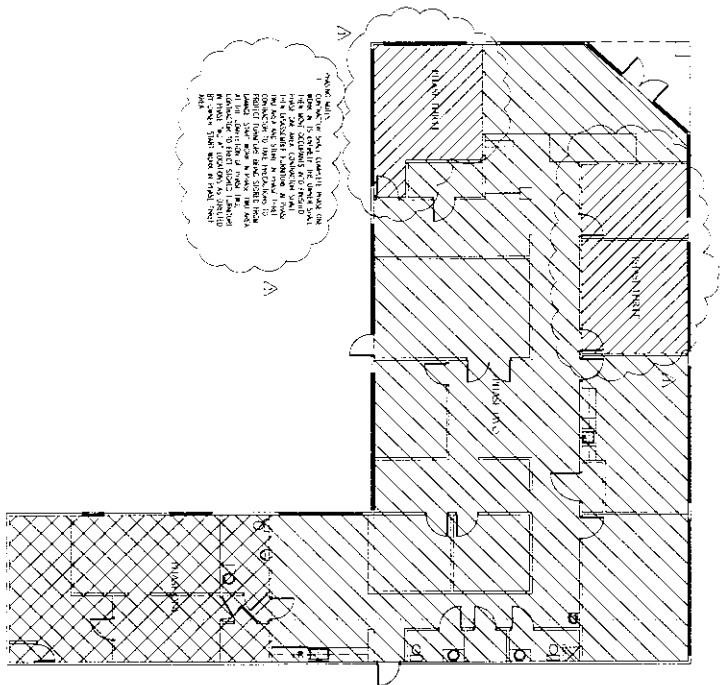
The above advertised bid invitation opening date has been extended to May 26, 2026

Original drawings have been revised and to be replaced by drawings attached to this Addendum.

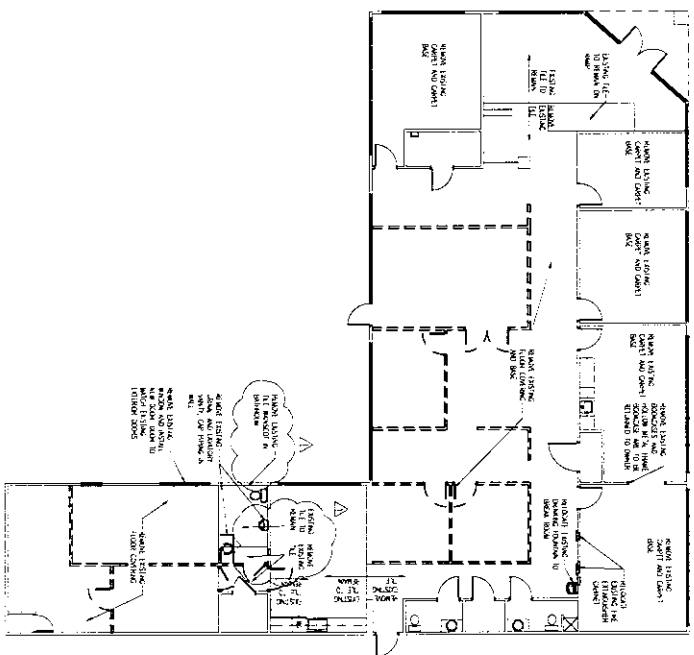
ALL OTHER SPECIFICATIONS SHALL REMAIN THE SAME.



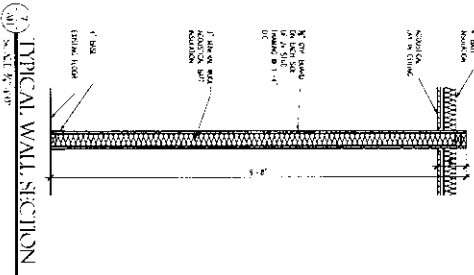
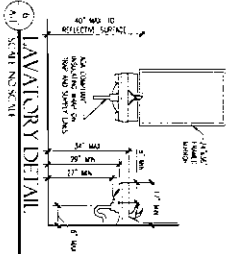
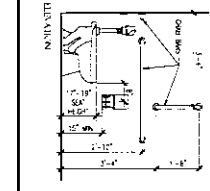
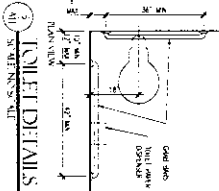
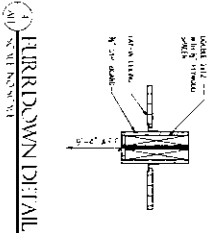
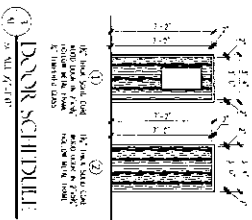
Danny Keene
Division Head
Equipment and Procurement



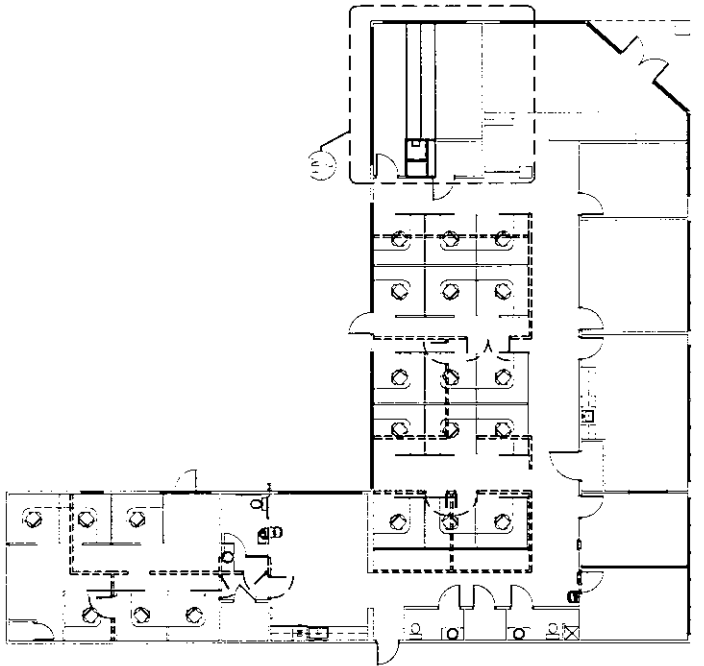
PLASING FLOOR PLAN



DEMOLITION PLAN

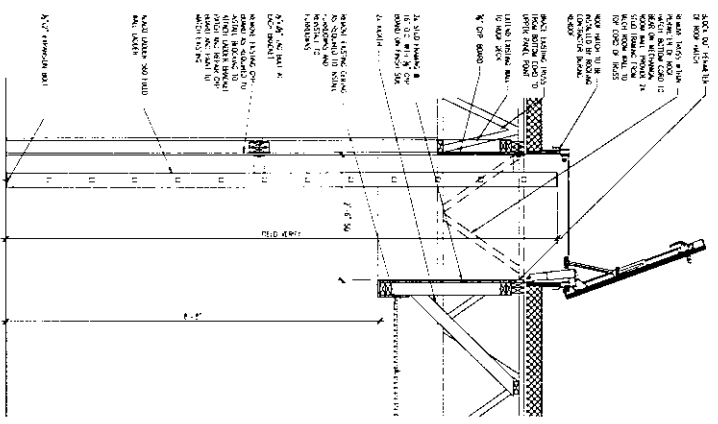
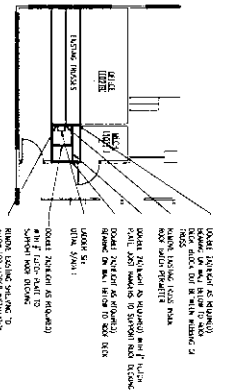


1. REMOVE ALL PLASING IN THIS AREA...
2. REMOVE ALL PLASING IN THIS AREA...
3. REMOVE ALL PLASING IN THIS AREA...
4. REMOVE ALL PLASING IN THIS AREA...
5. REMOVE ALL PLASING IN THIS AREA...
6. REMOVE ALL PLASING IN THIS AREA...
7. REMOVE ALL PLASING IN THIS AREA...
8. REMOVE ALL PLASING IN THIS AREA...
9. REMOVE ALL PLASING IN THIS AREA...
10. REMOVE ALL PLASING IN THIS AREA...
11. REMOVE ALL PLASING IN THIS AREA...
12. REMOVE ALL PLASING IN THIS AREA...
13. REMOVE ALL PLASING IN THIS AREA...
14. REMOVE ALL PLASING IN THIS AREA...
15. REMOVE ALL PLASING IN THIS AREA...



NSK-111
 LADDER FLOOR PLAN
 1/4" = 1'-0"

NSK-111
 LADDER FRAMING PLAN
 1/4" = 1'-0"



LADDER DETAIL
 1/4" = 1'-0"

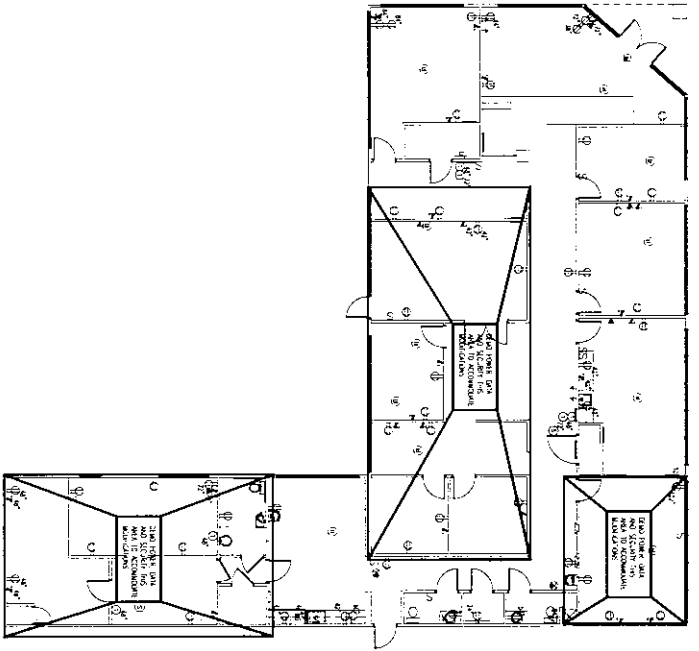


ARDOT NORTHEAST ARKANSAS
 OFFICE REMODEL
 Jonesboro, Arkansas
 Craighead County



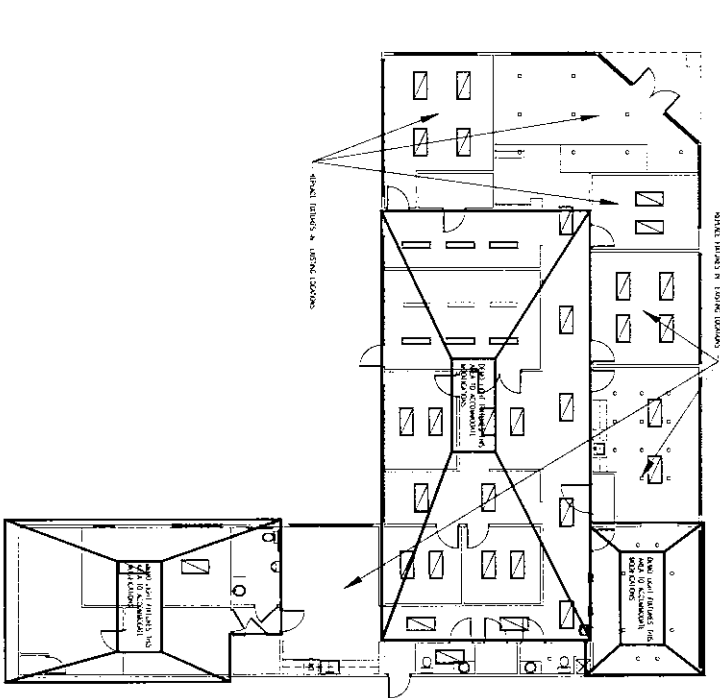
DATE: 04/17/2018
 JOB NO: 47-276
 DRAWN: JF/B
 REVISIONS:
 1. ADD: 3/27/17/26

A1.3
 4 OF 7



POWER/DATA DEMO PLAN

1. ALL POWER AND DATA OUTLETS TO BE INSTALLED IN ACCORDANCE WITH THE ARKANSAS ELECTRICAL CODE AND THE NATIONAL ELECTRICAL CODE (NEC).
2. ALL DATA OUTLETS TO BE INSTALLED IN ACCORDANCE WITH THE ARKANSAS TELECOMMUNICATIONS AND ELECTRONIC INFORMATION SYSTEMS CODE (ATEIS).
3. ALL NETWORK SWITCHES TO BE INSTALLED IN ACCORDANCE WITH THE ARKANSAS TELECOMMUNICATIONS AND ELECTRONIC INFORMATION SYSTEMS CODE (ATEIS).
4. ALL NETWORK SWITCHES TO BE INSTALLED IN ACCORDANCE WITH THE ARKANSAS TELECOMMUNICATIONS AND ELECTRONIC INFORMATION SYSTEMS CODE (ATEIS).
5. ALL NETWORK SWITCHES TO BE INSTALLED IN ACCORDANCE WITH THE ARKANSAS TELECOMMUNICATIONS AND ELECTRONIC INFORMATION SYSTEMS CODE (ATEIS).



LIGHTING DEMO PLAN

DATE: 08/11/2010
 TIME: 10:00 AM
 DRAWN BY: J. SMITH
 CHECKED BY: M. JONES

ARDOT
 ARKANSAS DEPARTMENT
 OF TRANSPORTATION

ARDOT NORTHEAST ARKANSAS
 OFFICE REMODEL
 Jonesboro, Arkansas
 Craighead County

PROJECT NO. 2009-0001
 SHEET NO. 5 OF 6

E1.1
 5 OF 6



Addendum 1

Date: May 14, 2026
Project: Northeast Arkansas Engineering Office Remodel
Reference: Prospective Bidder's Questions
Included with this Addendum: A1.1, A1.2, A1.3, M1.1

1. Bid date will be extended to May 26, 2026 at 11:00 A.M.
2. Question – "In the bathroom we are going to replace fixtures it will be impossible to find matching tile so will all bidders be instructed to demo all tile and go back with owner recommended material?"
Answer – Existing vanity to be demolished is installed on the tile. This should not expose a floor area without tile. The new water closet should install over the existing tile and not expose a floor area without tile. Remove the floor tile to the point the wall will be installed. Sheet 2/A1.1 has been updated to reflect this.
3. Question – "Will office furniture be removed and put back by owner or contractor?"
Answer – Furniture not required in remodel layout will be removed by the owner. Furniture required in the remodel layout will be relocated and reinstalled by the contractor. Refer to revised phasing plan and notes, Sheet 1/A1.1.
4. Question – "In the office with the book case that will be removed when we add the new demising wall and tie back into the storefront we will be in the middle of a window. Do you have a preference on how we terminate the wall to the glass. (possibly just metal trim to match the storefront frame)."
Answer – Metal Trim is acceptable.
5. Question – "This is not a big one but will need to know where to relocate the fire extinguisher."
Answer – Refer to sheet 2/A1.1.
6. Question – "Is there a place to put a dumpster or will demo material need to be hauled off site as removed?"
Answer – We feel there is adequate room in parking to place a small open top roll-off and maintain adequate parking for the staff that will be on site. There will need to be a site material layout submitted and approved by owner prior to placing. Construction personnel would have to find alternate parking.
7. Question – "Is this a prevailing wage job?"
Answer – No.