



AR

DOT

**ARKANSAS DEPARTMENT
OF TRANSPORTATION**



**Tony Evans, P.E.
District Construction
Engineer**

JCREC Luncheon

April 14, 2022

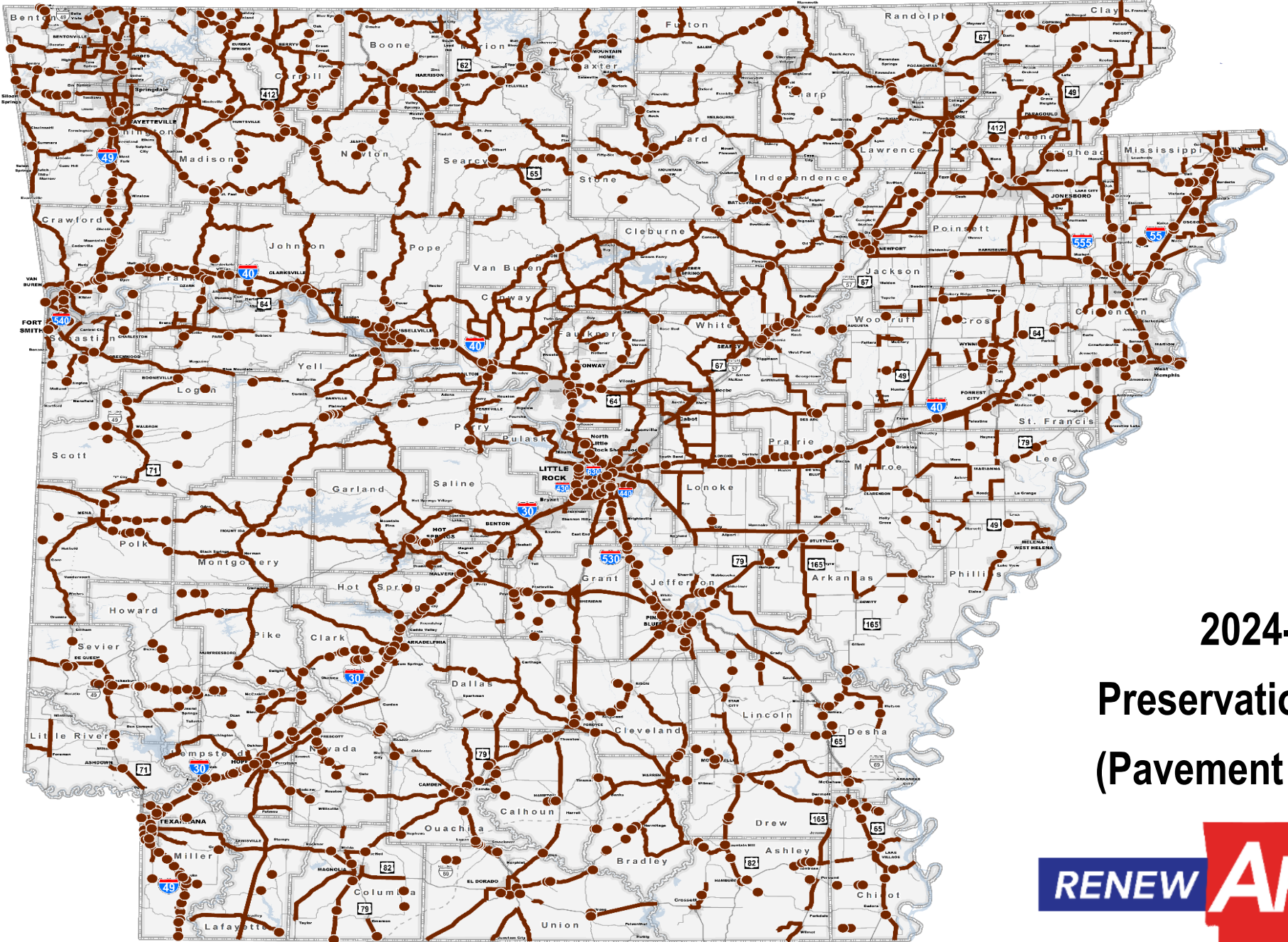




ISSUE 1

Every Arkansan Wins!

- Highways, Roads, and Bridges
- 70% (\$206 M) State Highways
- 15% (\$44 M) County Roads
- 15% (\$44 M) City Streets



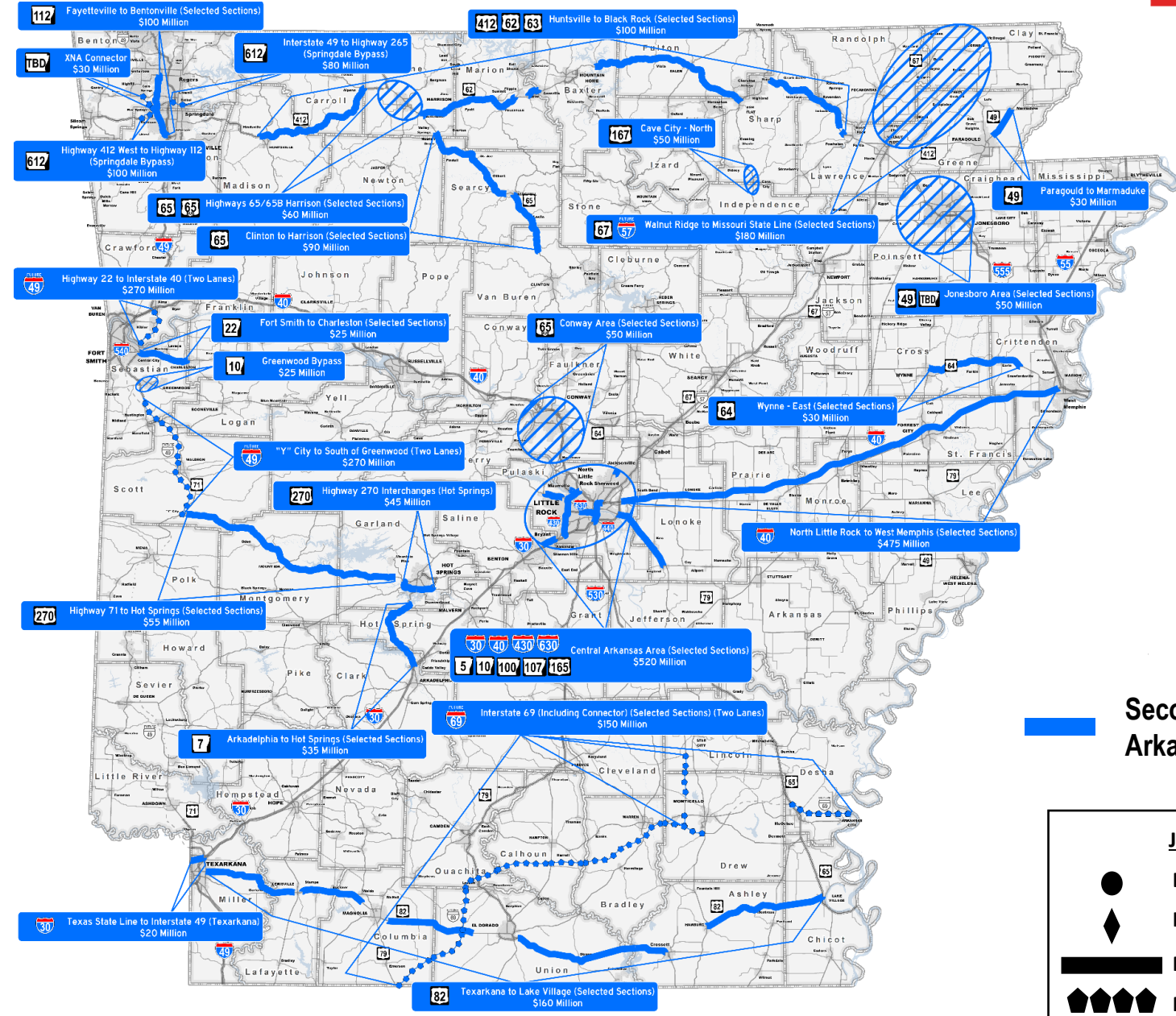
**2024-2033
Preservation Projects
(Pavement & Bridges)**



Second Connecting Arkansas Program



- Capital and Congestion Relief
- \$3.6 Billion - 20 years
- July 2023



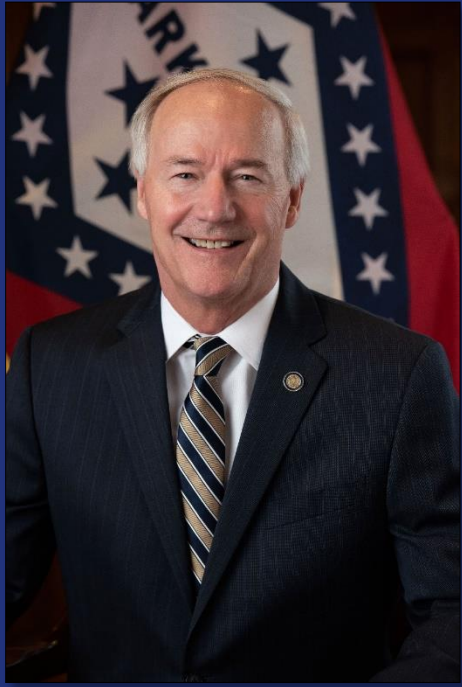
Second Connecting Arkansas Program

| Job Type | |
|----------|--------------|
| ● | Bridge |
| ◆ | Interchange |
| ▬ | Roadway |
| ◆◆◆◆ | New Location |

Federal Funding for Transportation

- Infrastructure Investment and Jobs Act Enacted November 15, 2021
- FHWA is currently developing guidance
- Comments submitted for Development of Guidance for Electric Vehicle Charging Infrastructure
- Comments under development for Overall Implementation of the IIJA
- Bridge Formula Program
- Currently operating under a Continuing Resolution





Governor Asa Hutchinson



STATE OF ARKANSAS
EXECUTIVE DEPARTMENT
PROCLAMATION

EO 21-19

TO ALL TO WHOM THESE PRESENTS COME – GREETINGS:

**EXECUTIVE ORDER TO ESTABLISH THE GOVERNOR'S
INFRASTRUCTURE PLANNING ADVISORY COMMITTEE**

WHEREAS: President Joe Biden signed the Infrastructure Investment and Jobs Act into law on November 15, 2021; and

WHEREAS: The Infrastructure Investment and Jobs Act provides \$1.2 trillion in both grants and dedicated spending for infrastructure projects, capital assets, and workforce development; and

WHEREAS: The Infrastructure Investment and Jobs Act includes provisions that allow for disbursements to entities and individuals through various programs operated by agencies of the State of Arkansas; and

WHEREAS: It is in the best interest of the state and its citizens to identify best practices and procedures for ensuring that the State of Arkansas, its citizens, and businesses realize the maximum relief and benefits available under the Infrastructure Investment and Jobs Act;

Infrastructure Investment and Jobs Act



Roads and
Bridges
\$110B



Electric Grid
Upgrade
\$73B



Passenger
and Freight
Rail
\$66B



Broadband
\$65B



Improved
Water
Quality
\$55B



Climate
Change
Protection
\$50B



Airports
& Ports
\$42B



Public
Transit
\$39B



Environmental
Clean-Up
\$21B



Electric
Vehicles
\$15B

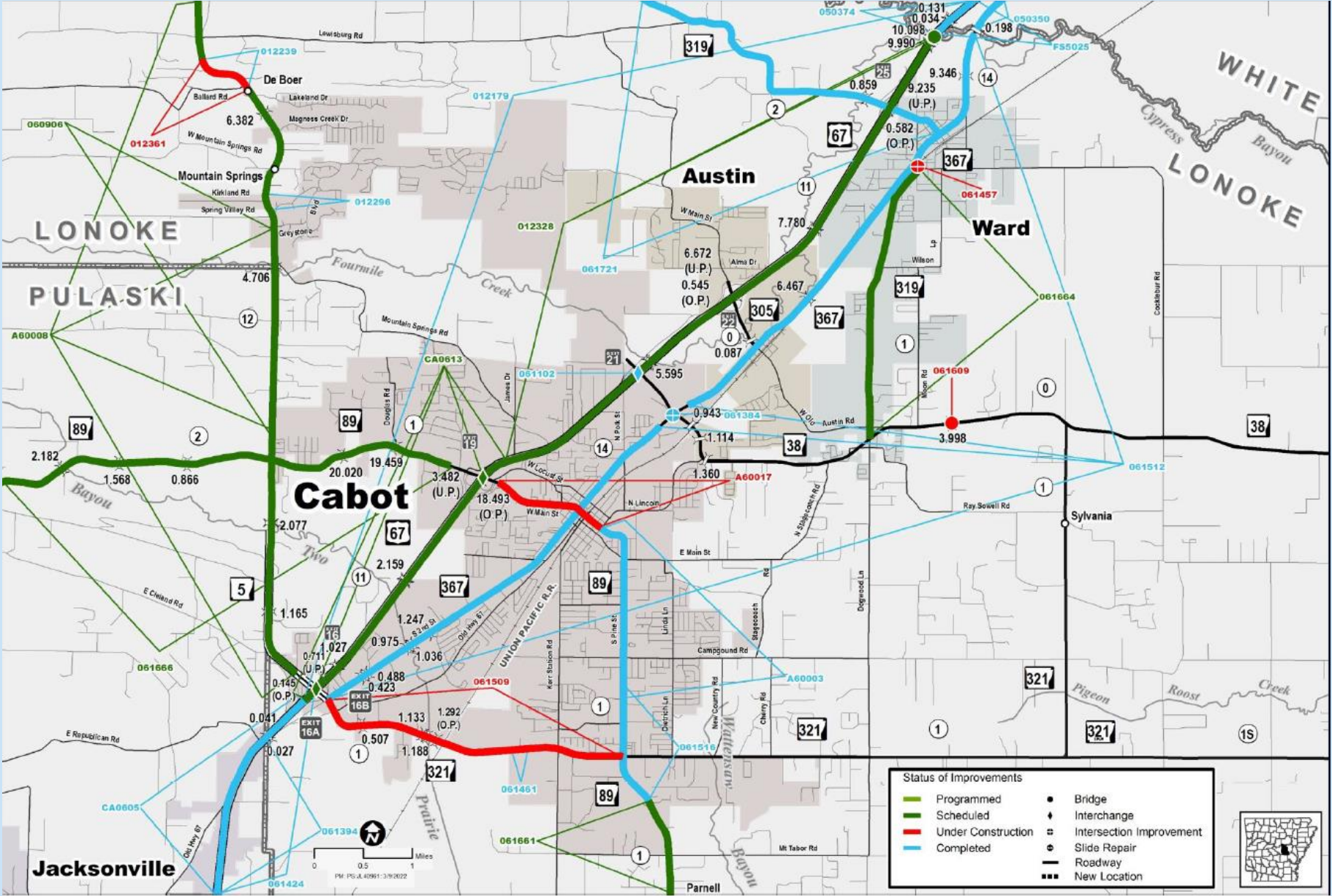


Transportation
Safety
\$11B



Reconnecting
Communities
\$1B

Current Projects around Cabot

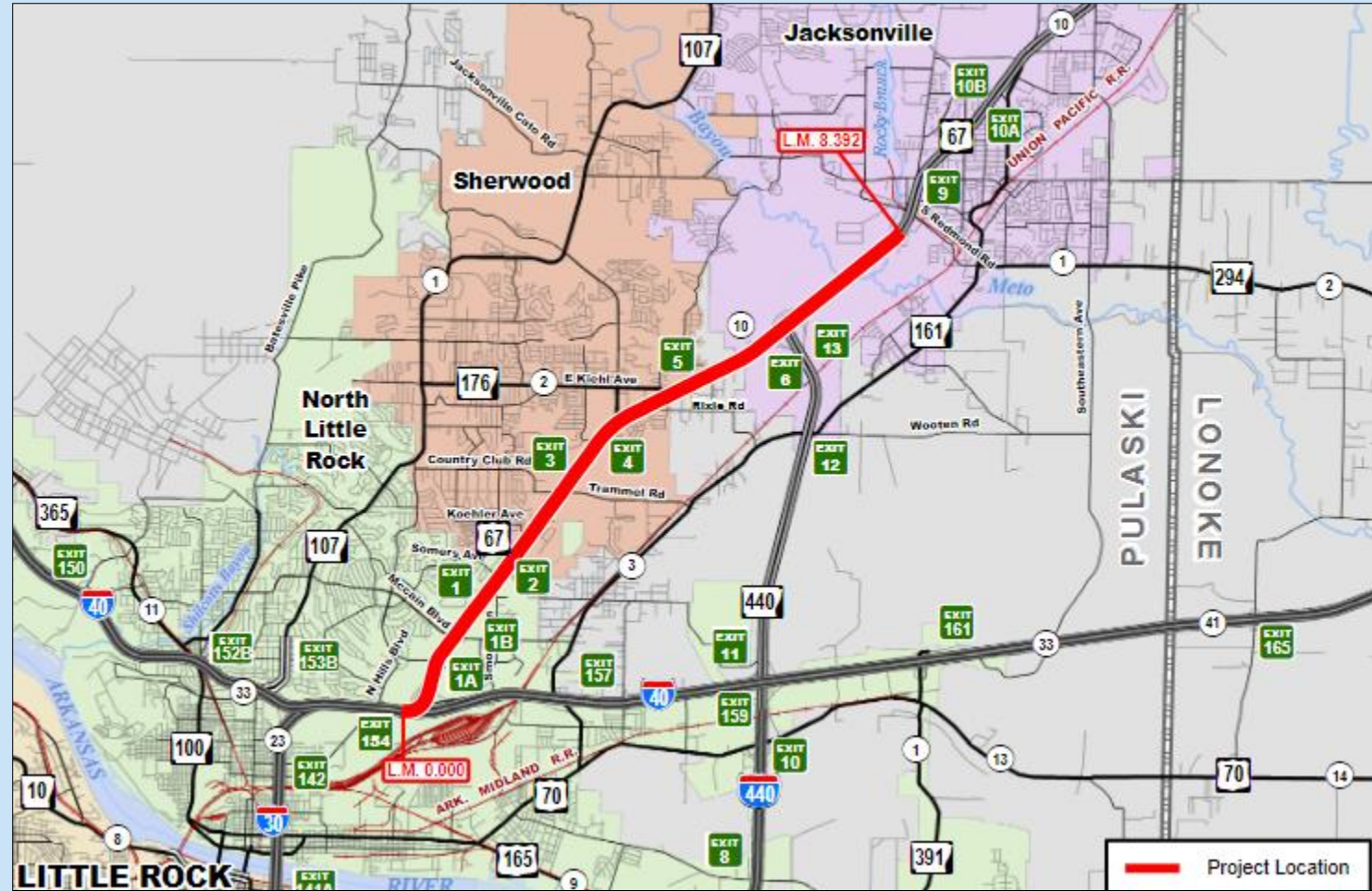


I-40 – S. Redmond Rd.

Highway 67

Concrete rehab

Mill and Overlay

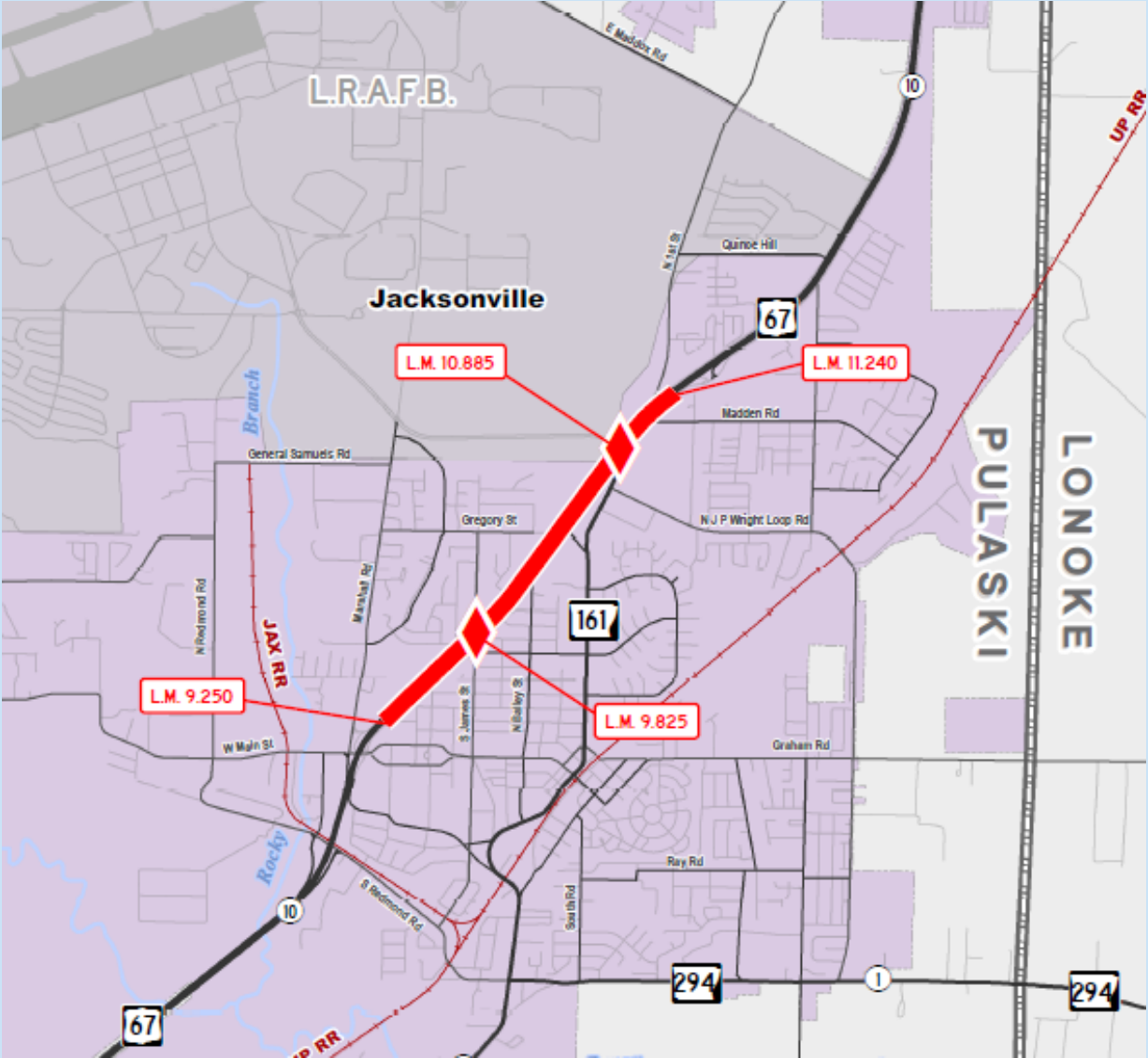


Jacksonville Widening

Widening to 6 lanes

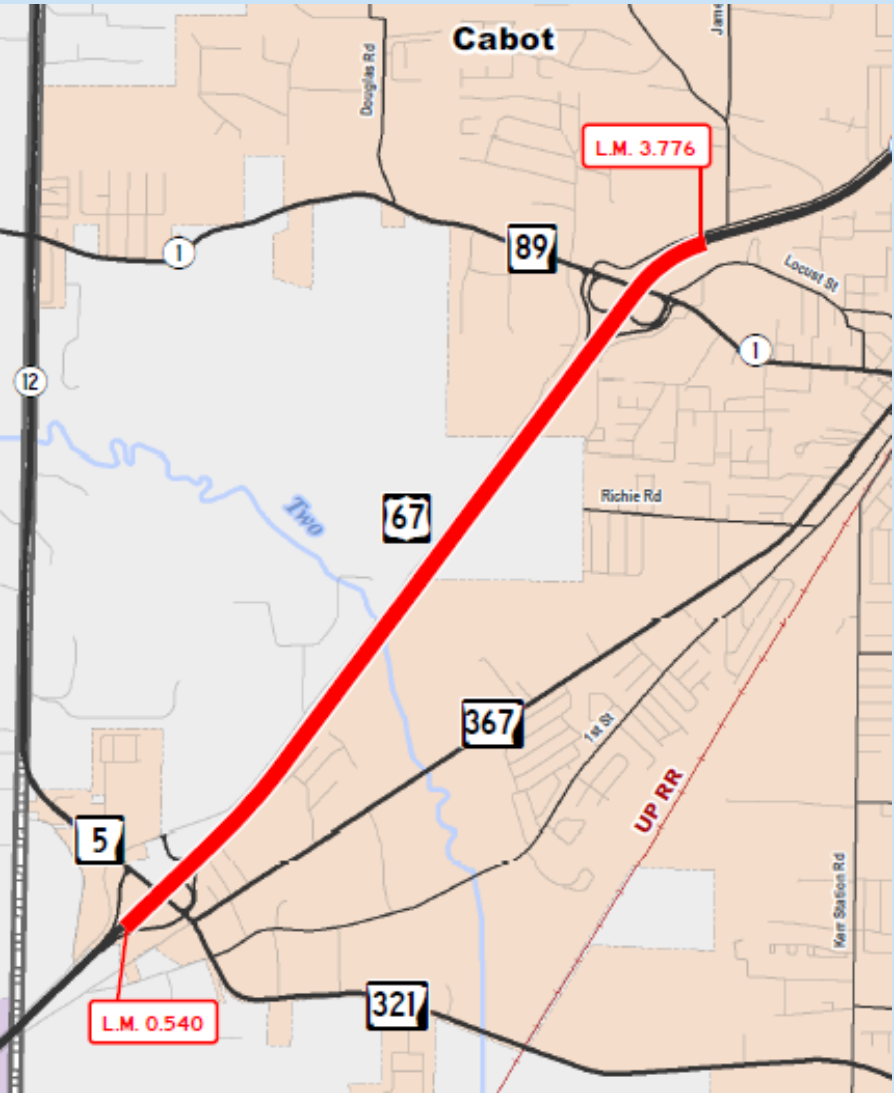
Interchange Improvements

Replace bridges



Cabot Widening

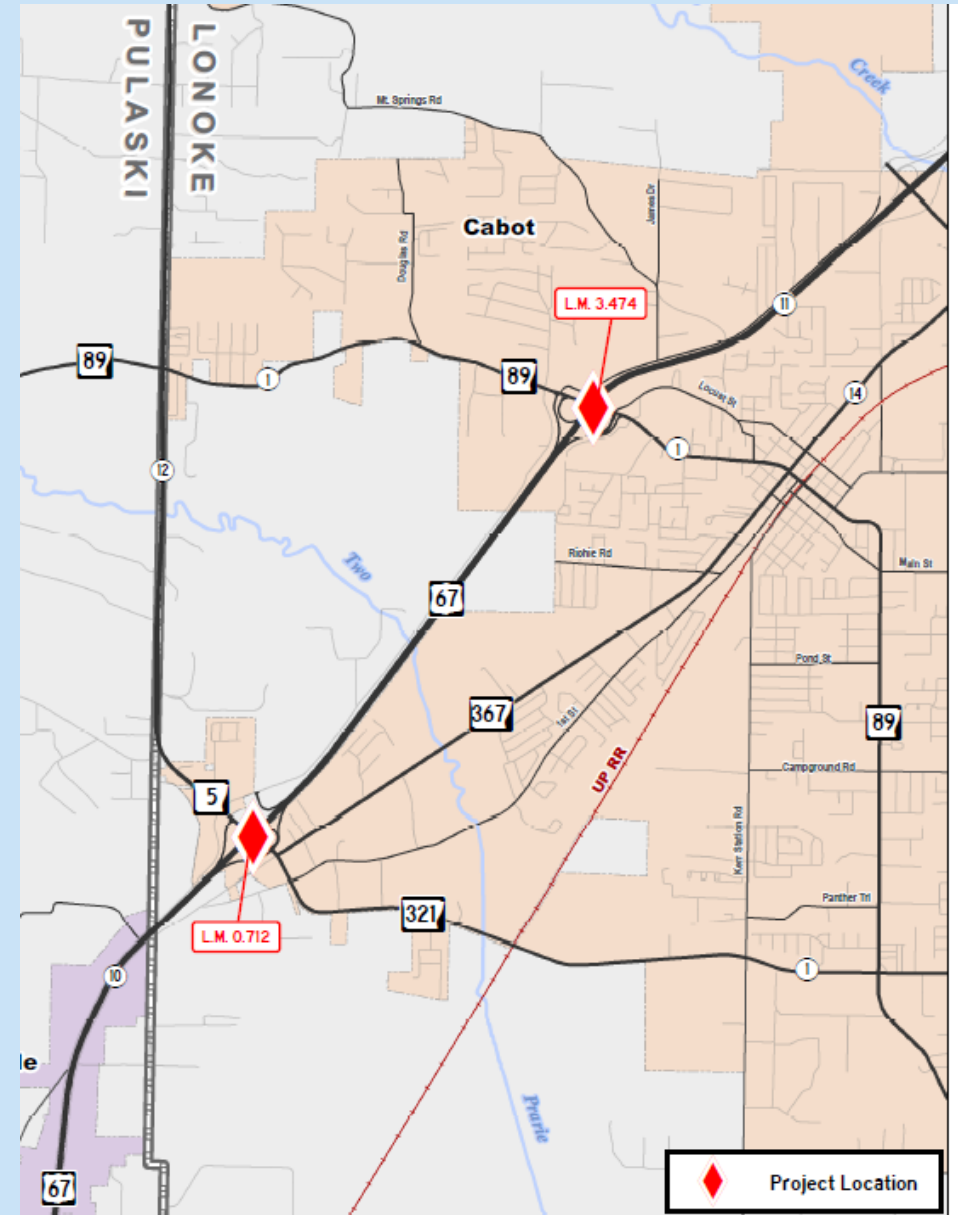
Widening to 6 lanes



Cabot Bridge Replacements

Reconfigure interchanges

Single Point Urban Interchange



Single Point Urban Interchange (SPUI)



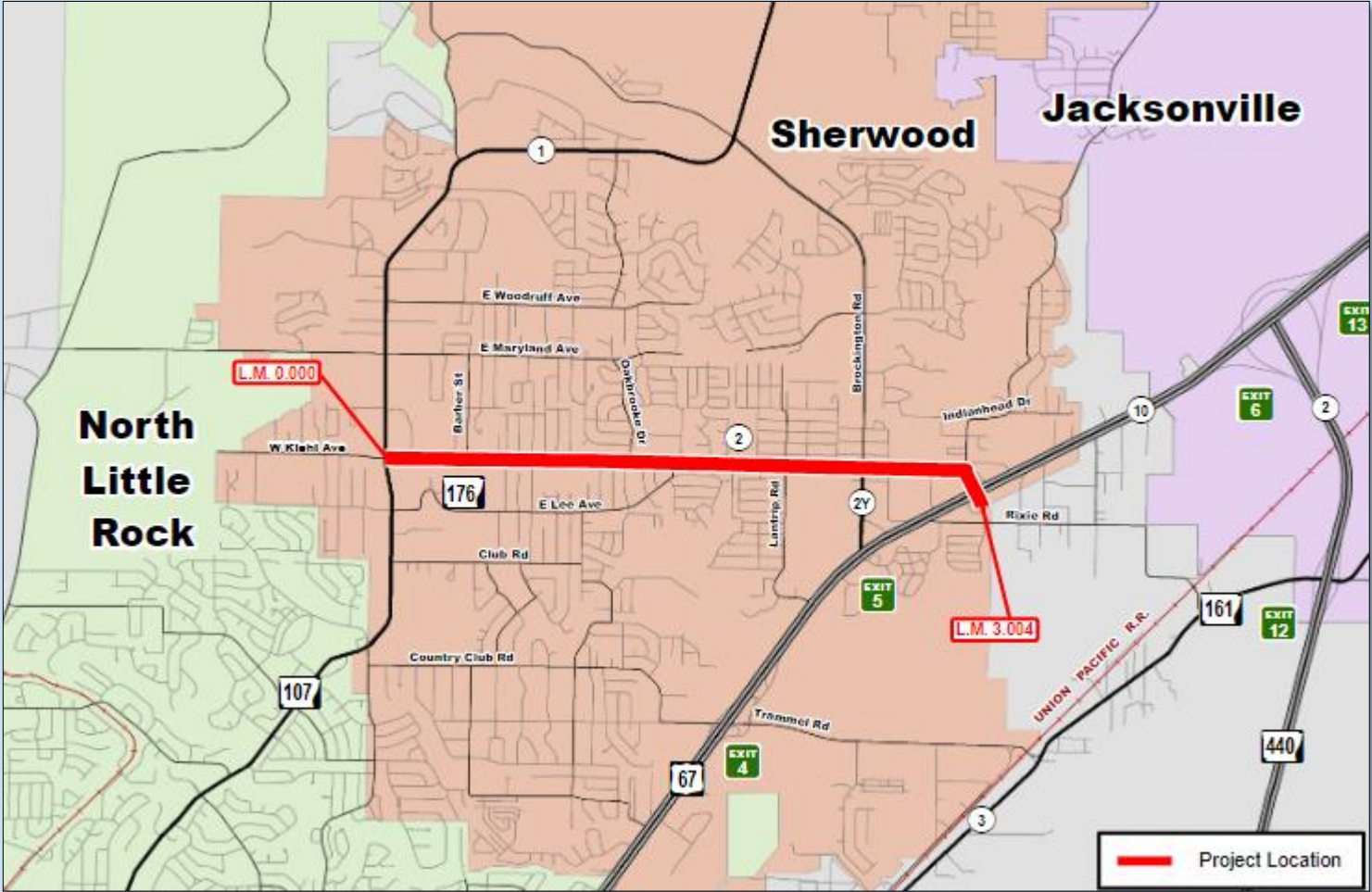
Single Point Urban Interchange (SPUI)



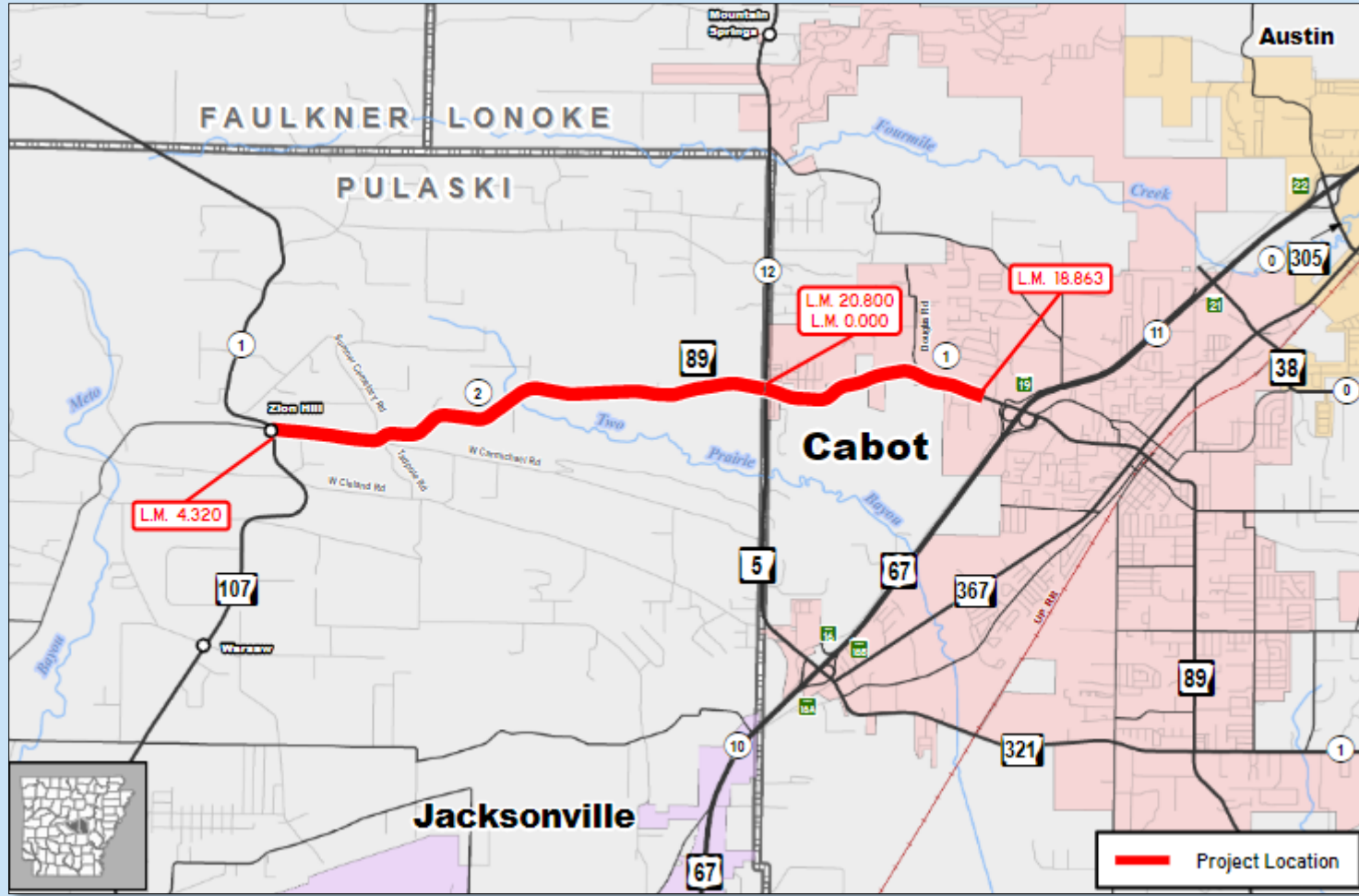
Highway 107 – Highway 67 (Sherwood)

Highway 176

Resurfacing



Cabot – Highway 107



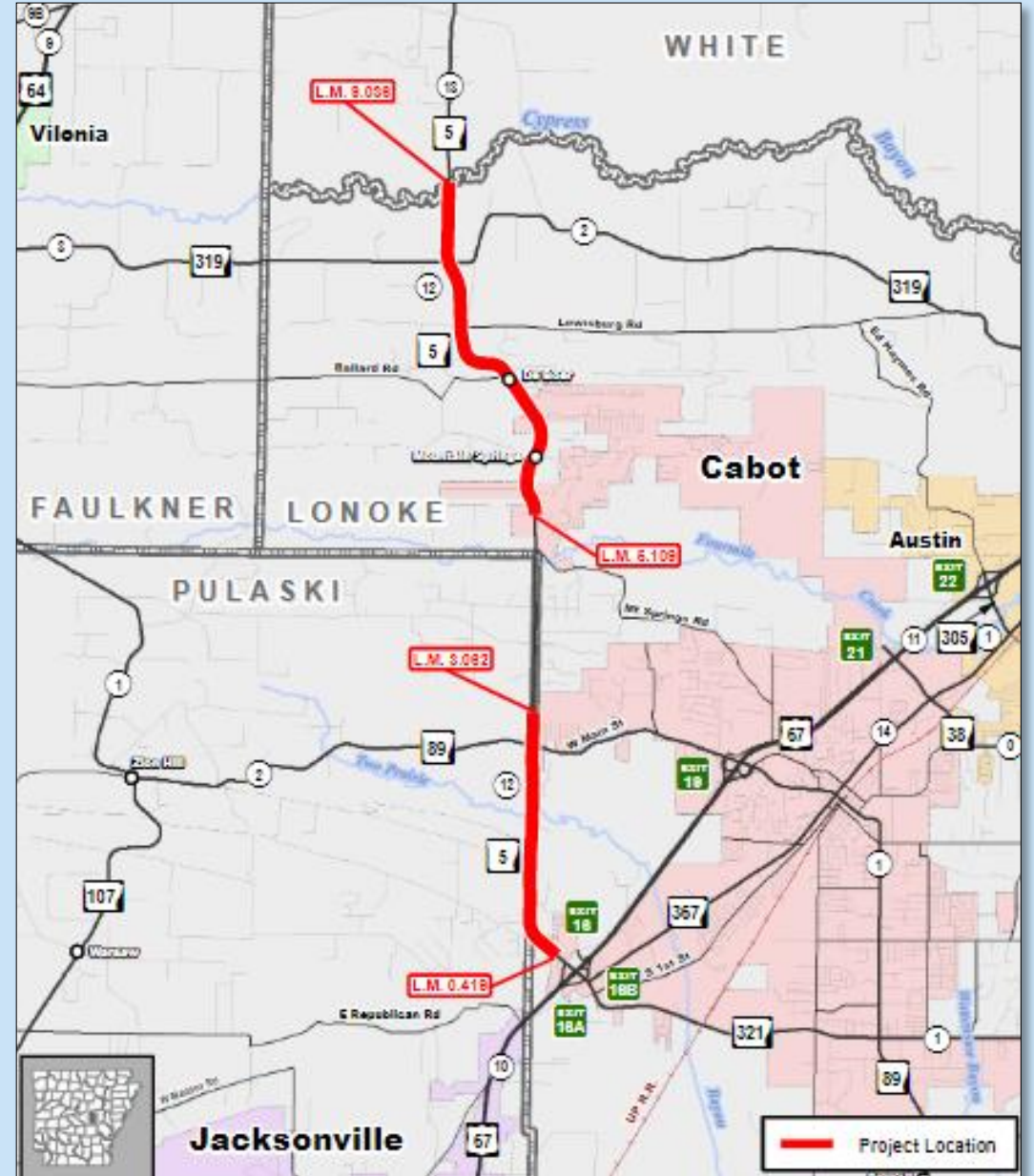
Highway 89

**Shoulders and
resurfacing**

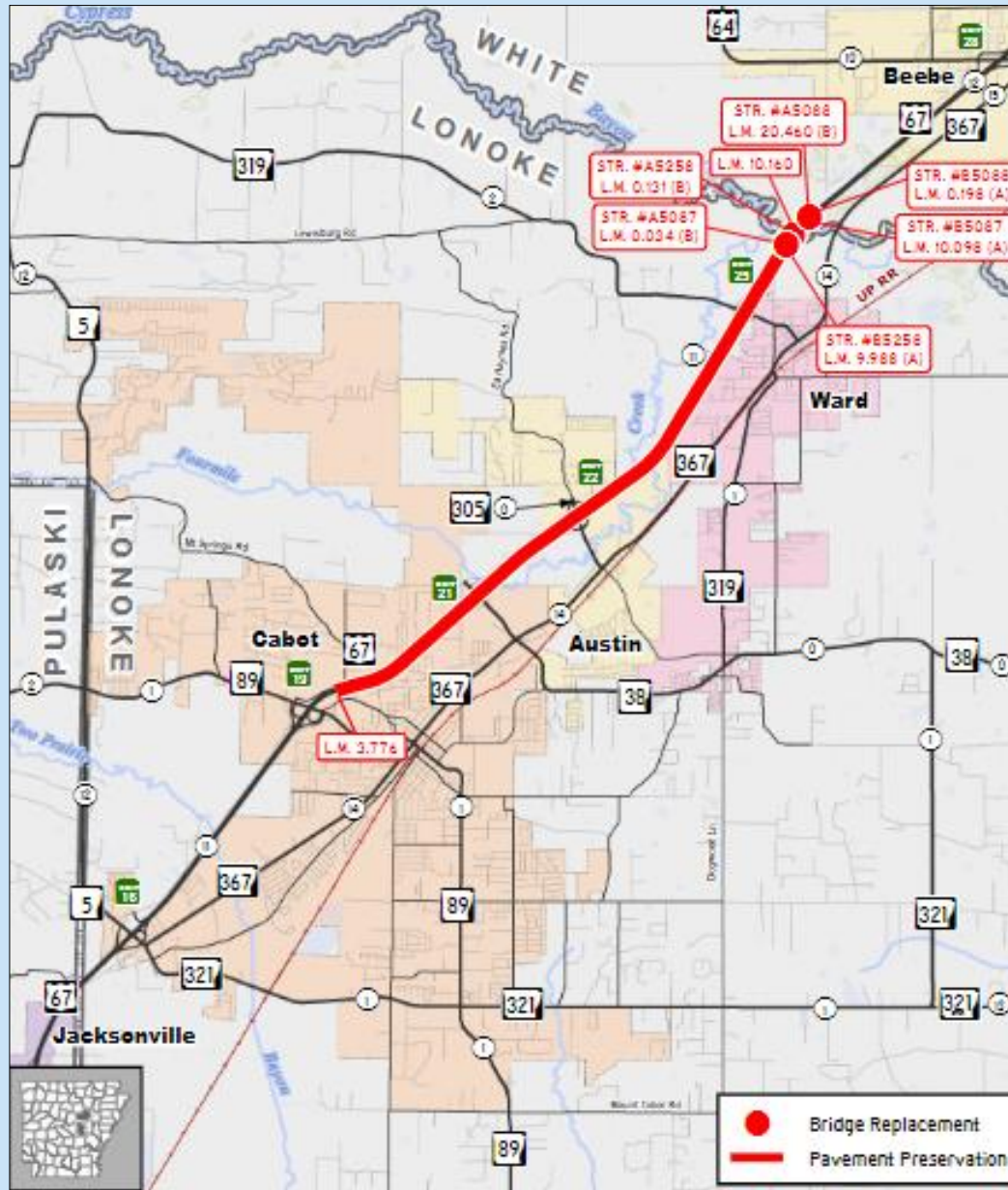
Cabot – White County Line

Highway 5

Mill and Overlay



Highway 89 – Cypress Bayou



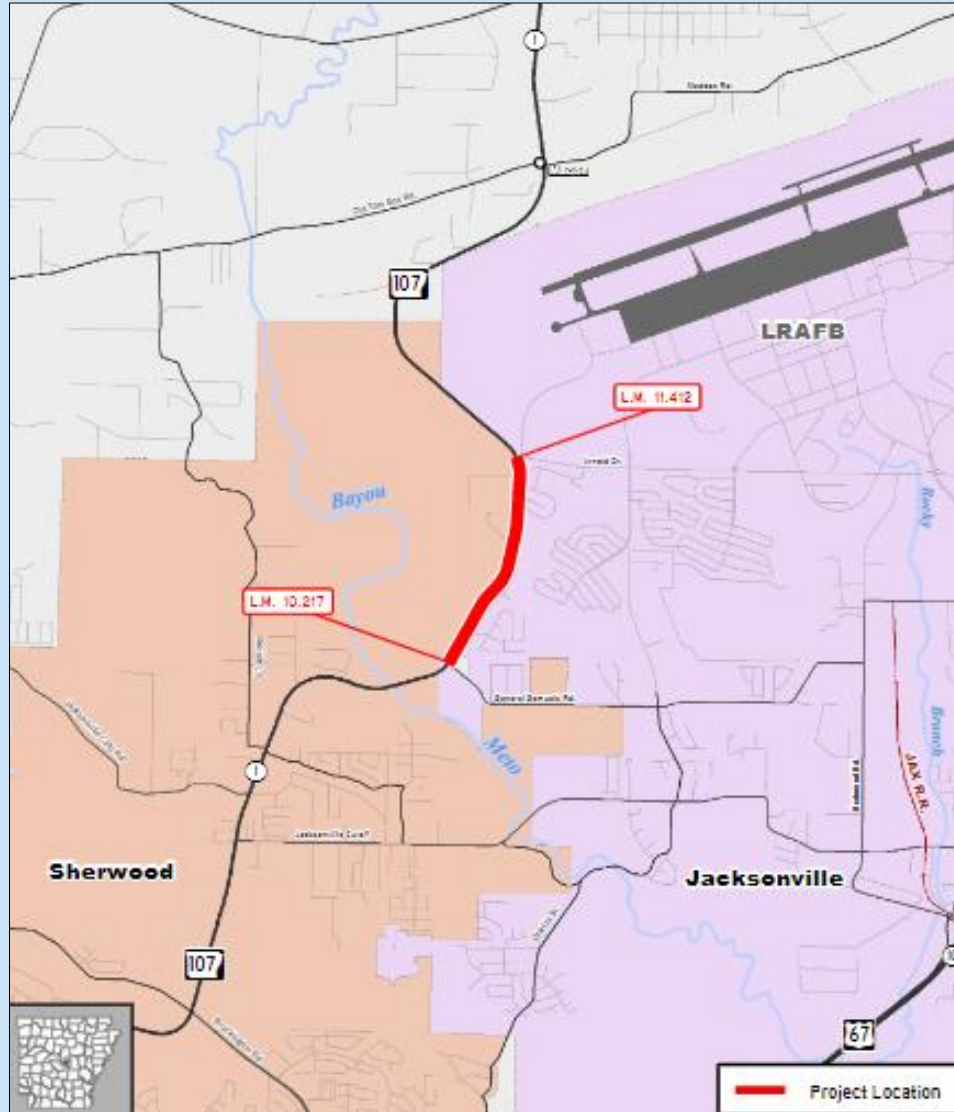
Highway 67

Full Depth Replacement

Hydro-demolition 4 bridges

Replace 6 bridges

General Samuels Road – Arnold Dr. (Sherwood)



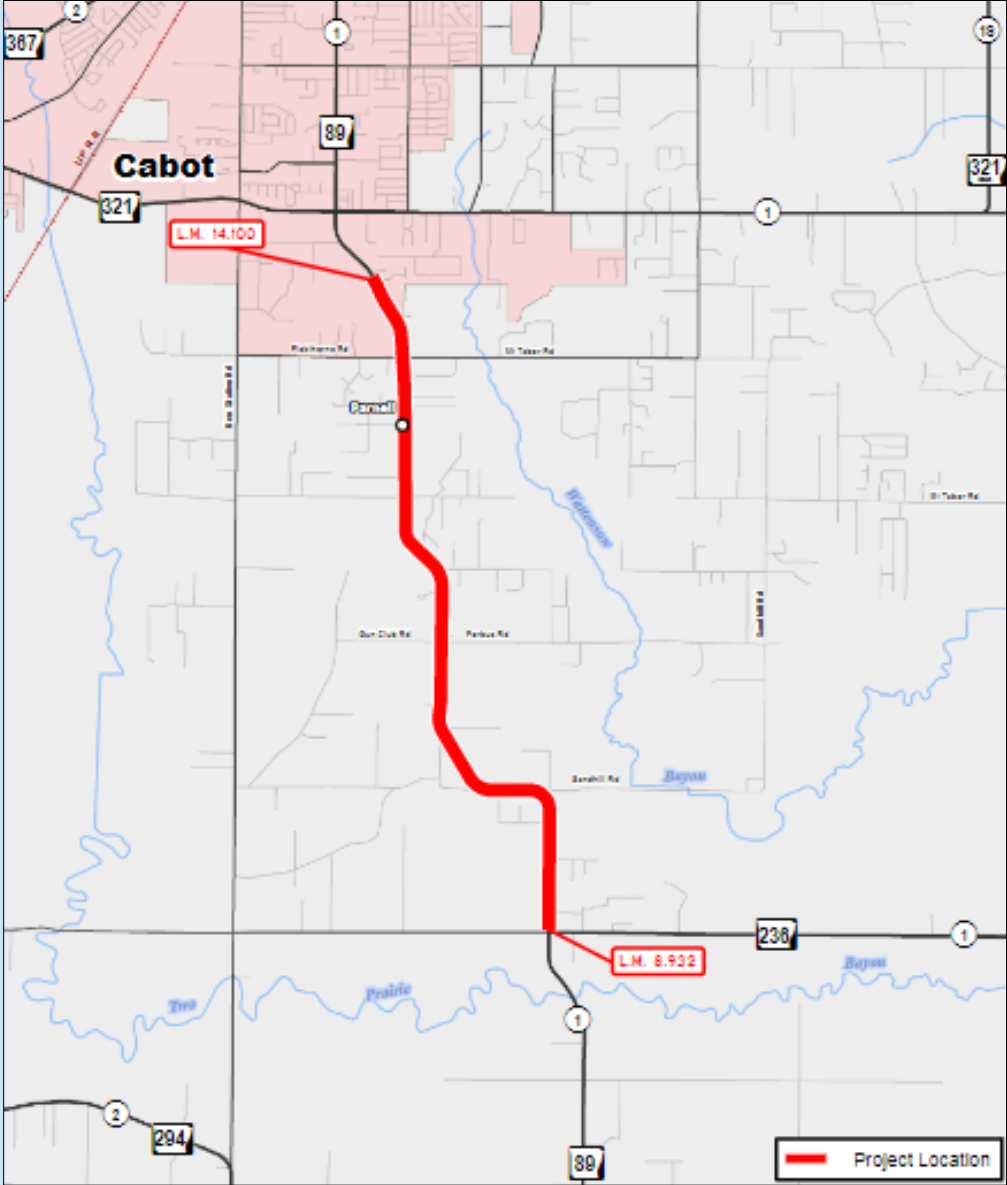
Highway 107

Major Widening

Highway 236 – Cabot

Highway 89

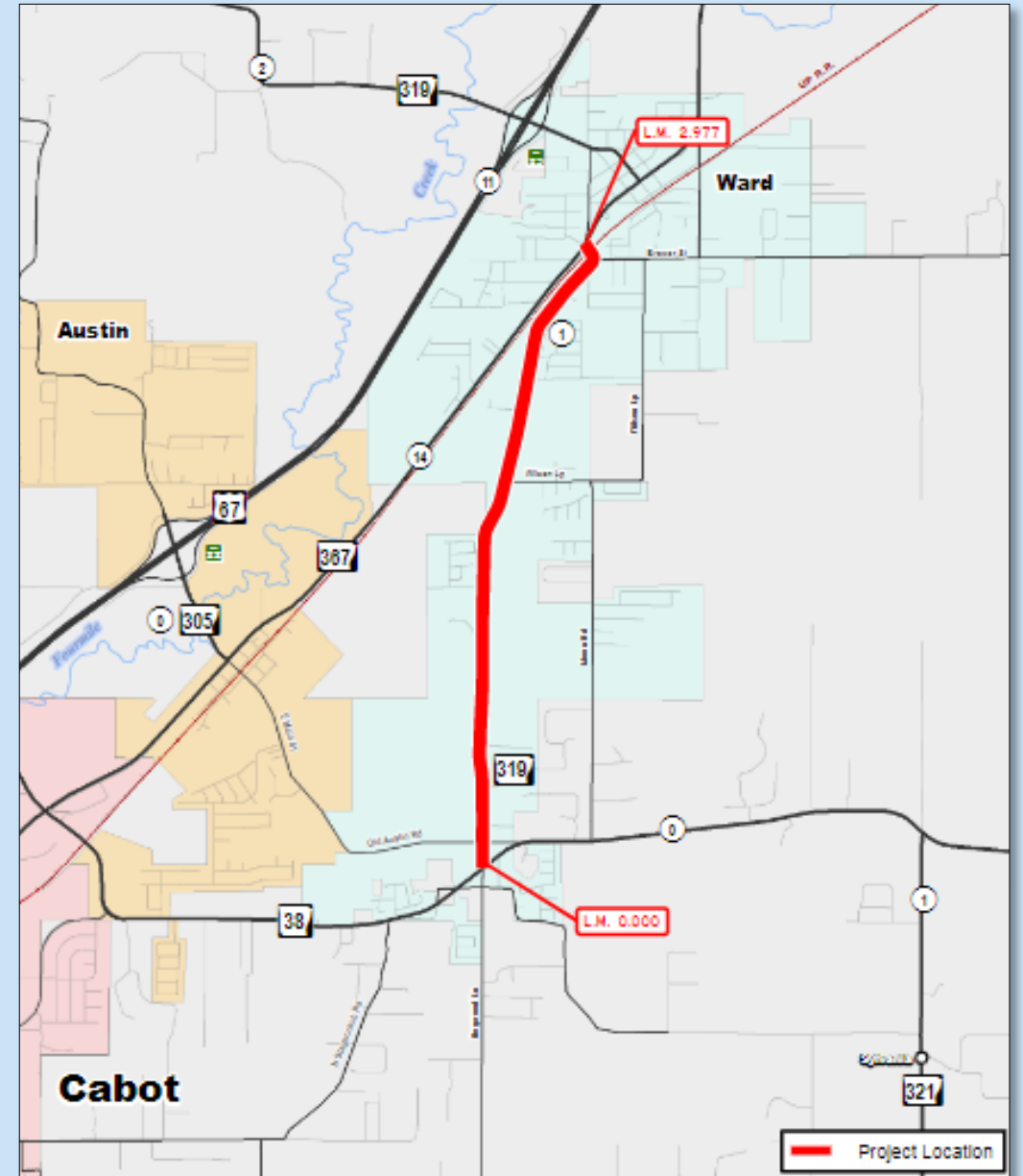
Pavement Preservation



Highway 38 – Highway 367 (Ward)

Highway 319

Shoulders and resurfacing



National Highway Performance & Cost Effectiveness Ranking



2020: 17th



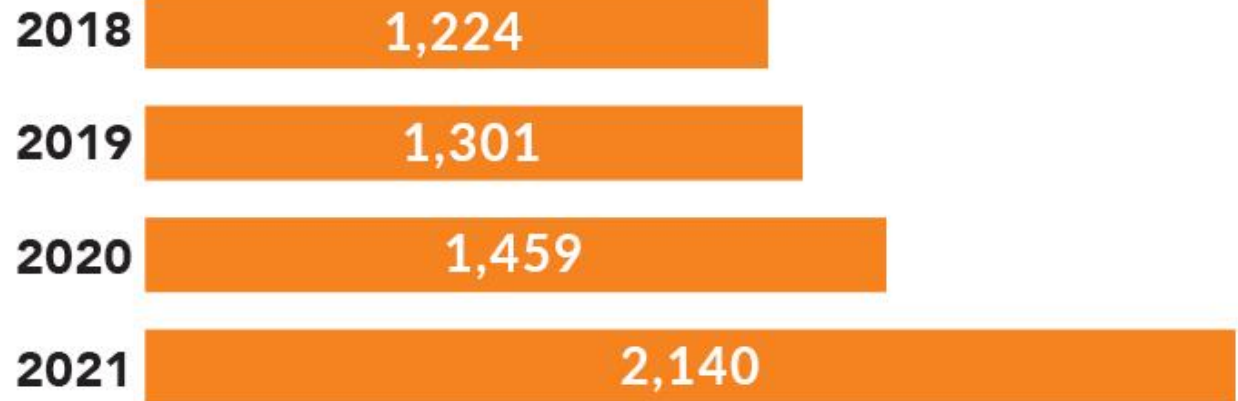


SLOW DOWN PHONE DOWN in work zones

- **Slow Down, Phone Down:** a statewide work zone safety campaign
- Arkansas Highway Police and Arkansas State Police **cracking down on distracted and reckless driving**
- **Education and awareness** around work zone laws

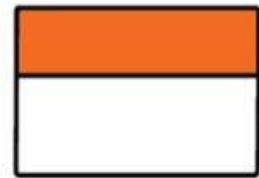


WORK ZONE CRASHES



**NATIONAL WORK ZONE
AWARENESS WEEK
APRIL 11-15, 2022**

**WORK ZONES ARE A
SIGN TO SLOW DOWN**



A wide-angle photograph of the Arkansas skyline, featuring several prominent skyscrapers and a bridge over a river. The sky is overcast and grey. The foreground shows a riverbank with some trees and a walkway.

**Tony Evans, P.E.
District Construction
Engineer**

JCREC Luncheon

April 14, 2022

