



Highway 22 - Interstate 40  
Crawford and Sebastian Counties, Arkansas

# I-49 Stakeholder Kick-Off Meeting

December 5, 2017



# AGENDA

## I-49 Stakeholder Kick-Off Meeting

- Welcome & Introductions
- Study Overview & History
- Study Scope and Schedule
- Public Involvement
- Q & A



Highway 22 - Interstate 40  
Crawford and Sebastian Counties, Arkansas



# STUDY OVERVIEW & HISTORY

## Overview

- ArDOT and FHWA are preparing an environmental re-evaluation and refining the alignment
- Will provide a critical connection between Highway 22 in Sebastian County and the I-40/I-49 interchange in Crawford County
- Length of 13.7 miles
- Project purpose is to complement the existing interstate system, accommodate safe travel, and promote economic development



Highway 22 - Interstate 40  
Crawford and Sebastian Counties, Arkansas

# STUDY OVERVIEW & HISTORY

## History

- Originally part of a larger environmental study known as the “U.S. 71 Relocation”
- Extended from Highway 70 in DeQueen, Arkansas to I-40 near Alma, encompassing approximately 125 miles
- The relocation of U.S. 71 in Arkansas is part of Congressionally-Designated High Priority Corridor 1 & Corridor 72
- Runs from Shreveport, Louisiana to Kansas City, Missouri



Highway 22 - Interstate 40  
Crawford and Sebastian Counties, Arkansas

## Arkansas I-49 Corridor



# STUDY OVERVIEW & HISTORY

## History

- A Final Environmental Impact Statement was prepared and a Record of Decision issued in December 1997
- Design and construction of sections of the corridor have been completed as funding has become available



Highway 22 - Interstate 40  
Crawford and Sebastian Counties, Arkansas

## Arkansas I-49 Corridor



# STUDY OVERVIEW & HISTORY

## Project Objectives:

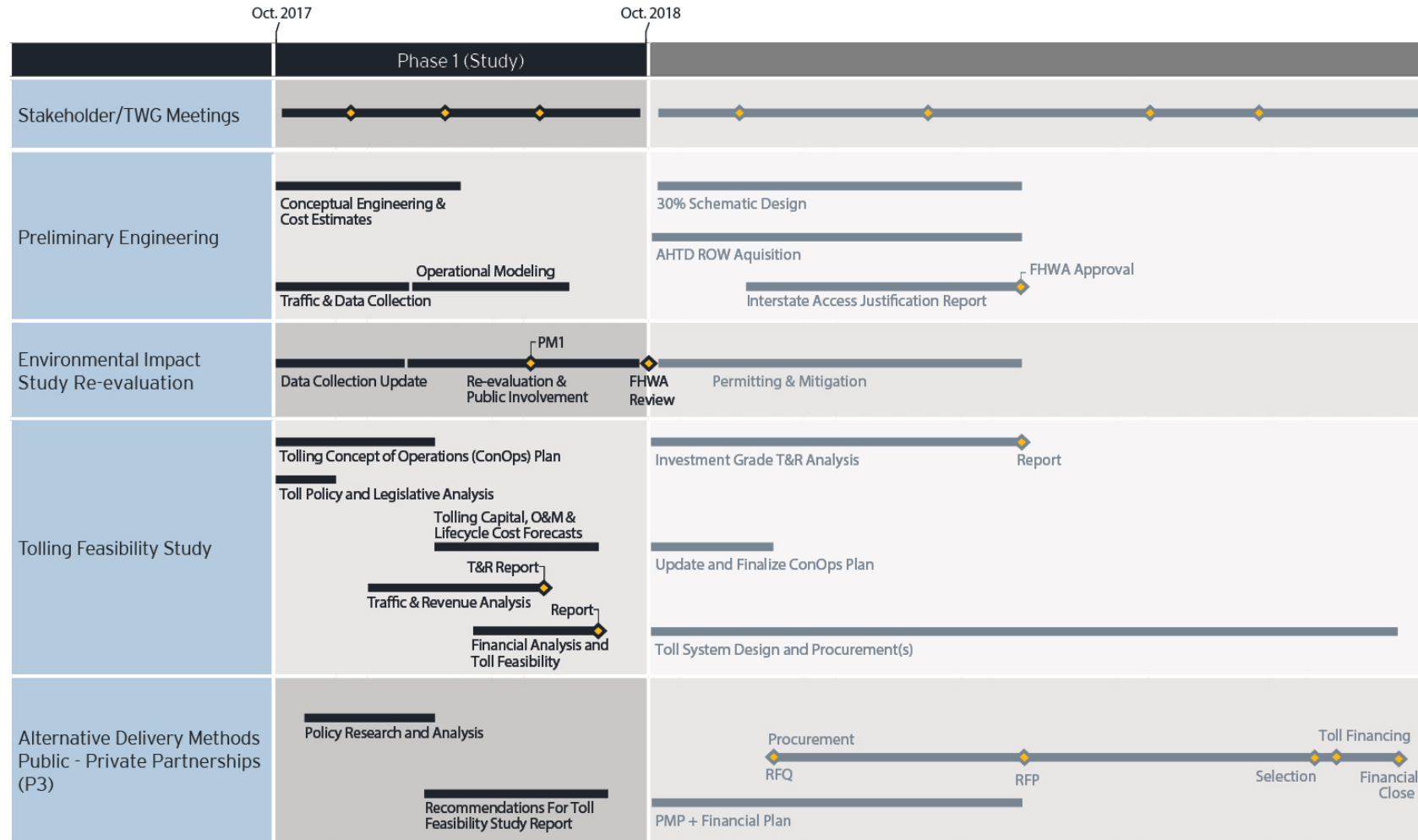
- Conduct an environmental re-evaluation
- Develop a preliminary design
- Conduct a toll feasibility analysis
- Conduct alternative delivery analysis



Highway 22 - Interstate 40  
Crawford and Sebastian Counties, Arkansas

# STUDY SCOPE & SCHEDULE

## Overview



\* Phase 2 contingent on available funding and tolling contribution



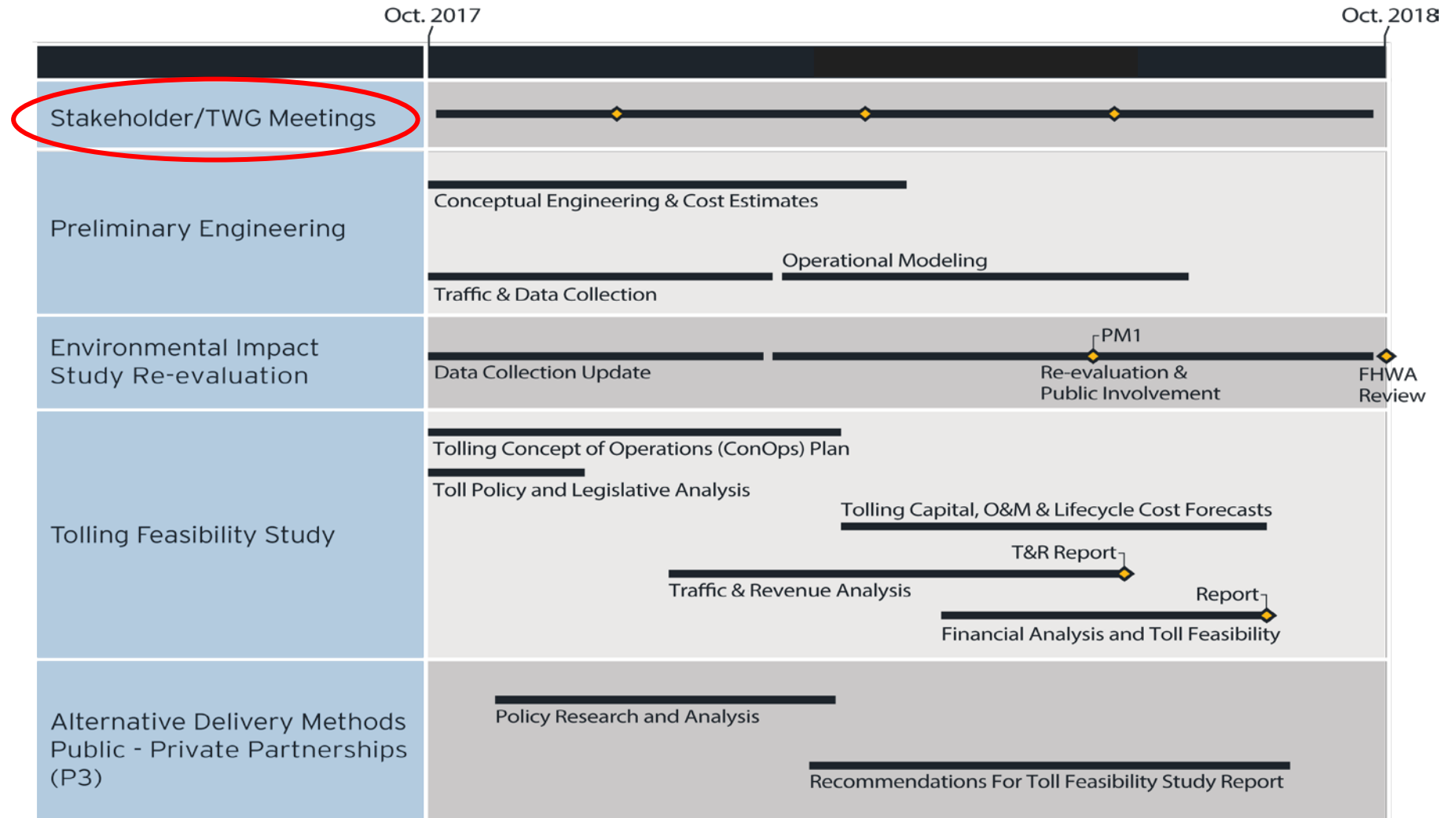
Highway 22 - Interstate 40  
Crawford and Sebastian Counties, Arkansas



# STUDY SCOPE & SCHEDULE

## Stakeholder/ TWG Meetings

- Integral part of the planning process
- Three meetings



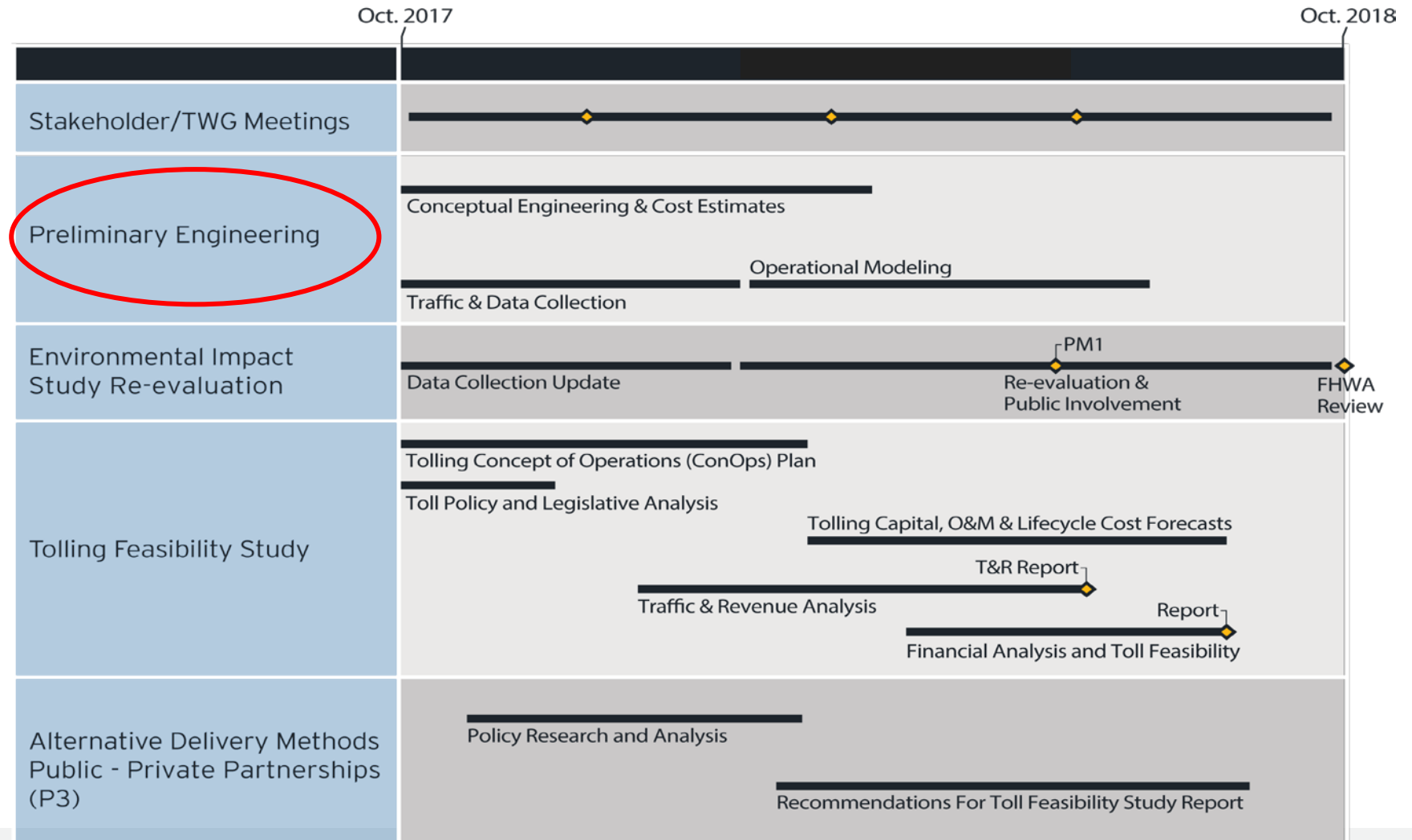
Highway 22 - Interstate 40  
Crawford and Sebastian Counties, Arkansas



# STUDY SCOPE & SCHEDULE

## Preliminary Engineering

- Refine selected FEIS alignment
- Develop interchange configurations
- Define proposed ROW
- Develop project cost estimates



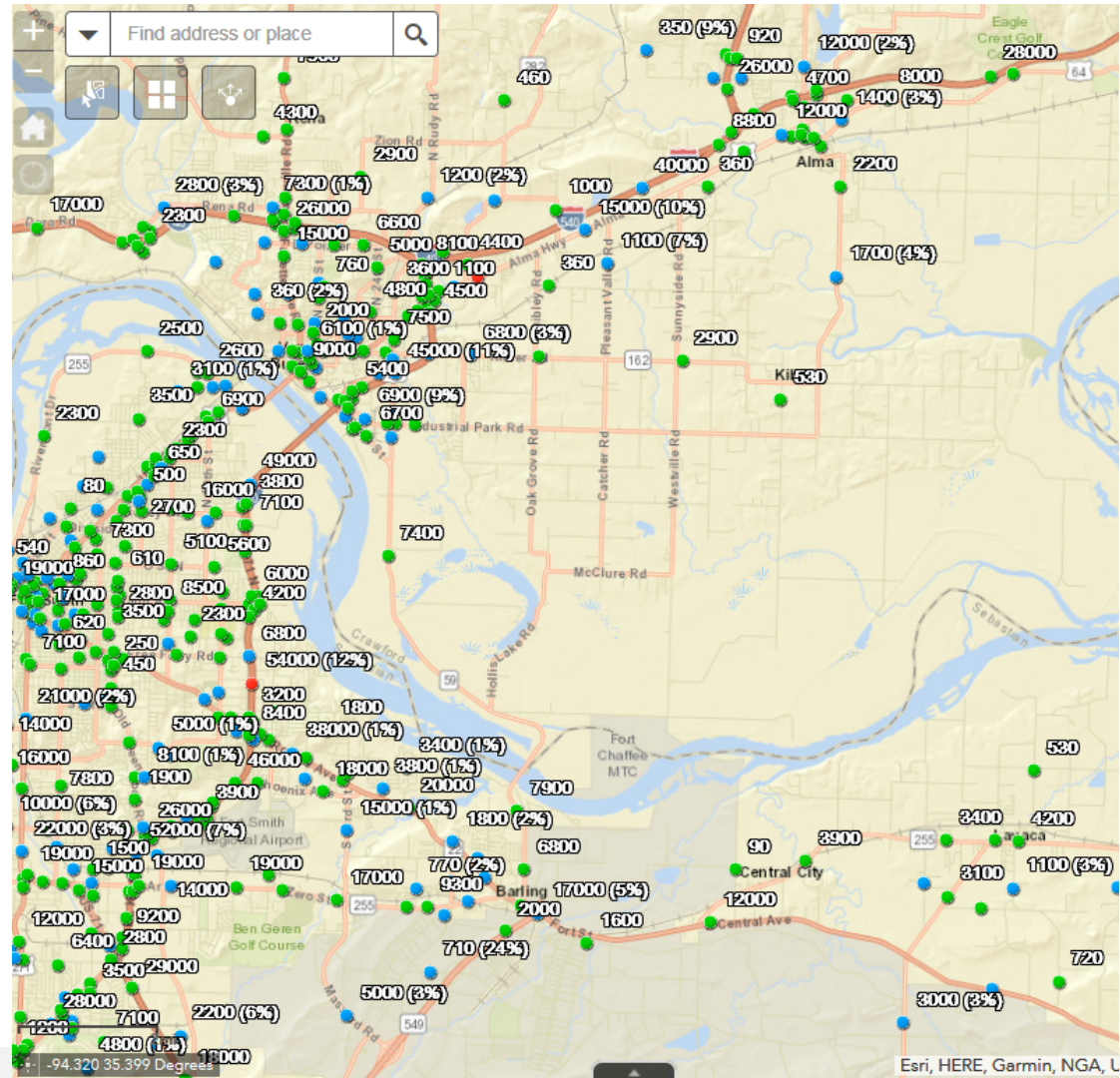
Highway 22 - Interstate 40  
Crawford and Sebastian Counties, Arkansas



# STUDY SCOPE & SCHEDULE

## Traffic and Safety

- Traffic and Safety Purpose
- Study Area
- Data Collection
- Work Tasks

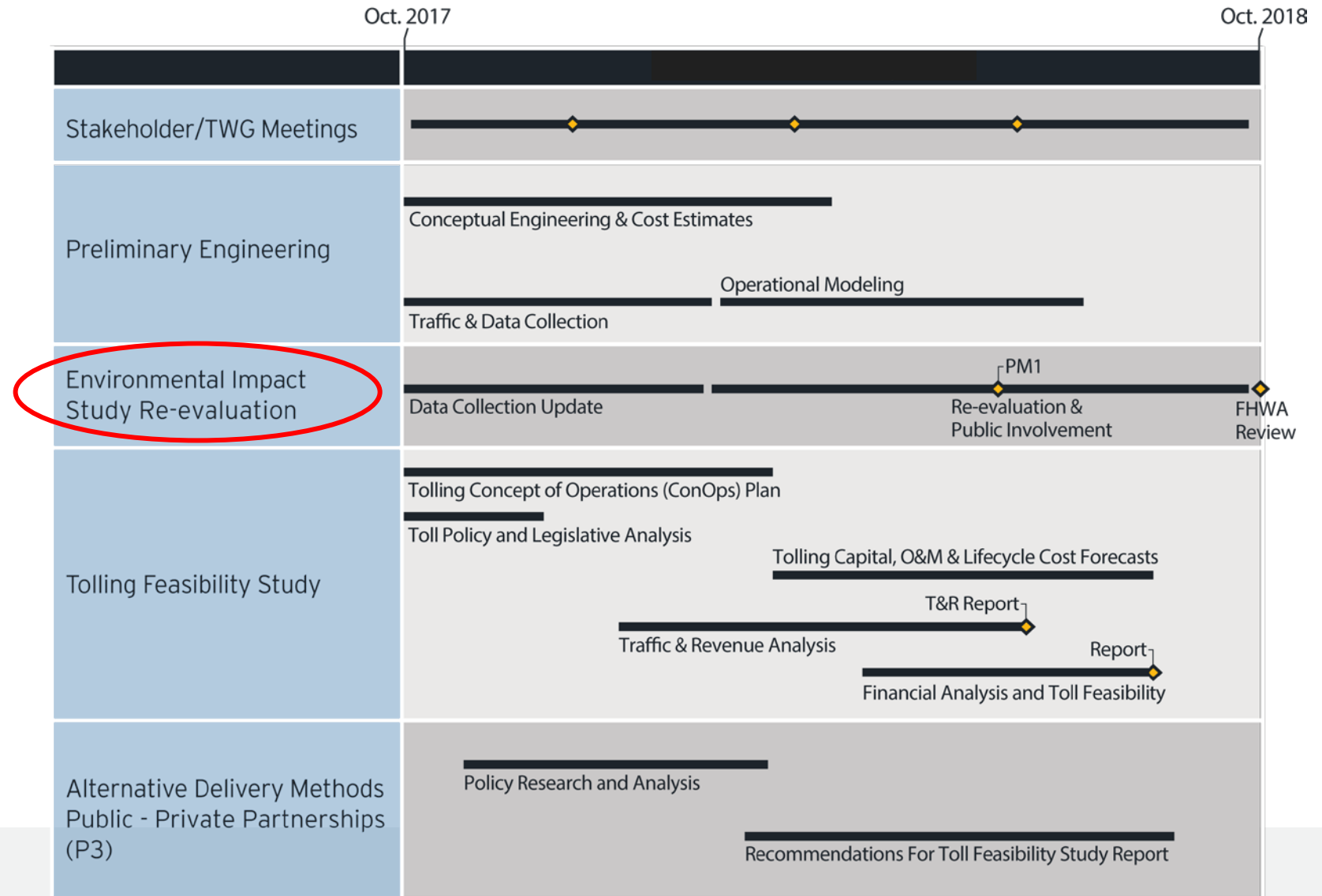


Highway 22 - Interstate 40  
Crawford and Sebastian Counties, Arkansas



# STUDY SCOPE & SCHEDULE

## Environmental Impact Study Re-evaluation



Highway 22 - Interstate 40  
Crawford and Sebastian Counties, Arkansas

# STUDY SCOPE & SCHEDULE

- **Environmental Scope of Work**
  - Environmental re-evaluation of this segment of I-49
- **Environmental Constraints Identification**
- **Potential Issues/Concerns**
  - Waters of the US
  - Right of way/Displacements
  - Threatened and endangered species
- **Additional Local Issues/Concerns**

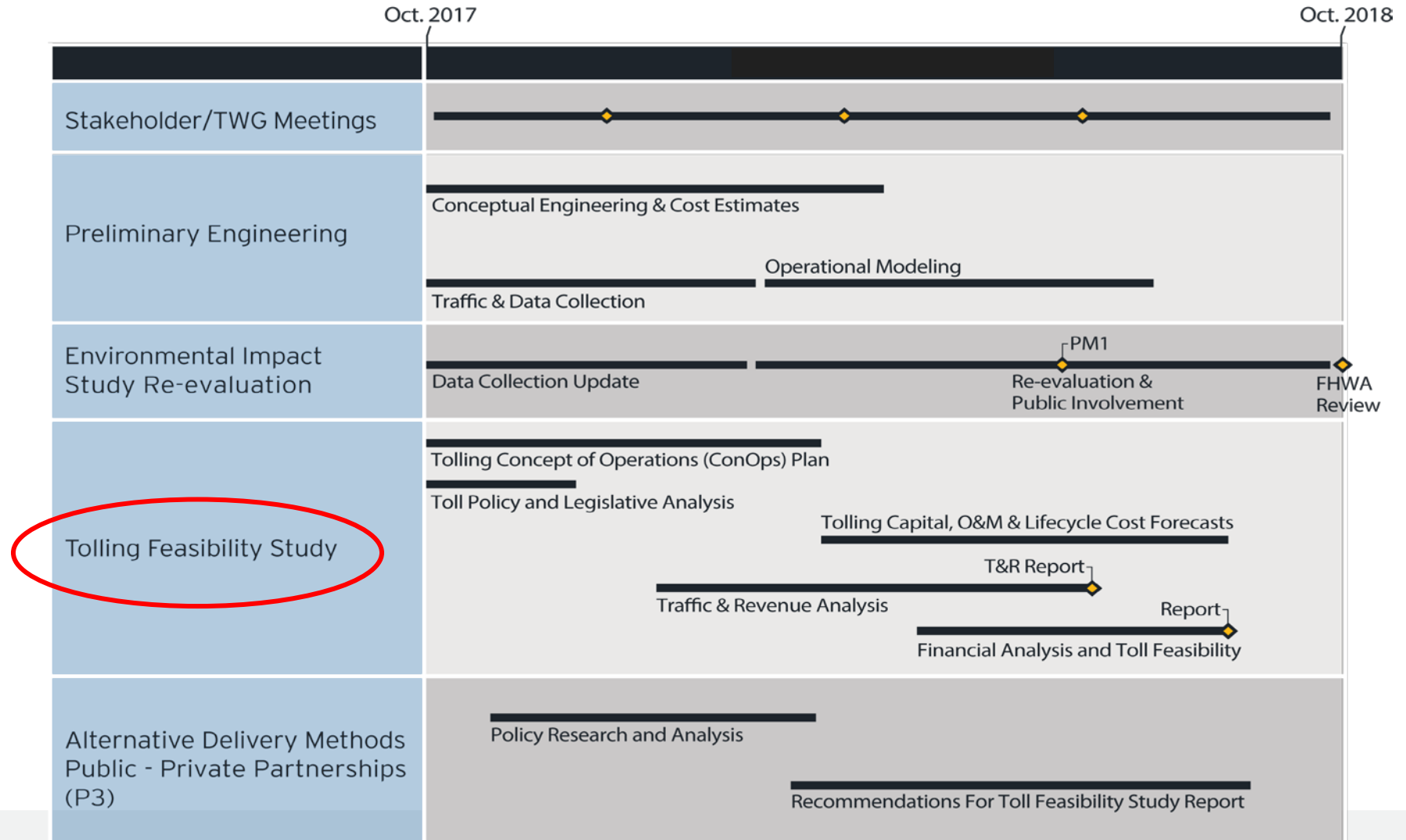


Highway 22 - Interstate 40  
Crawford and Sebastian Counties, Arkansas



# STUDY SCOPE & SCHEDULE

## Tolling Feasibility Study



Highway 22 - Interstate 40  
Crawford and Sebastian Counties, Arkansas



# STUDY SCOPE & SCHEDULE

## Tolling

- Tolling is a user fee, not a tax, that could help accelerate construction
- Being evaluated as a possible new funding source
- Project would provide a new and reliable route that travelers could **choose** to use
- Existing I-540 and Highway 59 would remain non-tolled
- Travel times on I-540 would improve if I-49 constructed

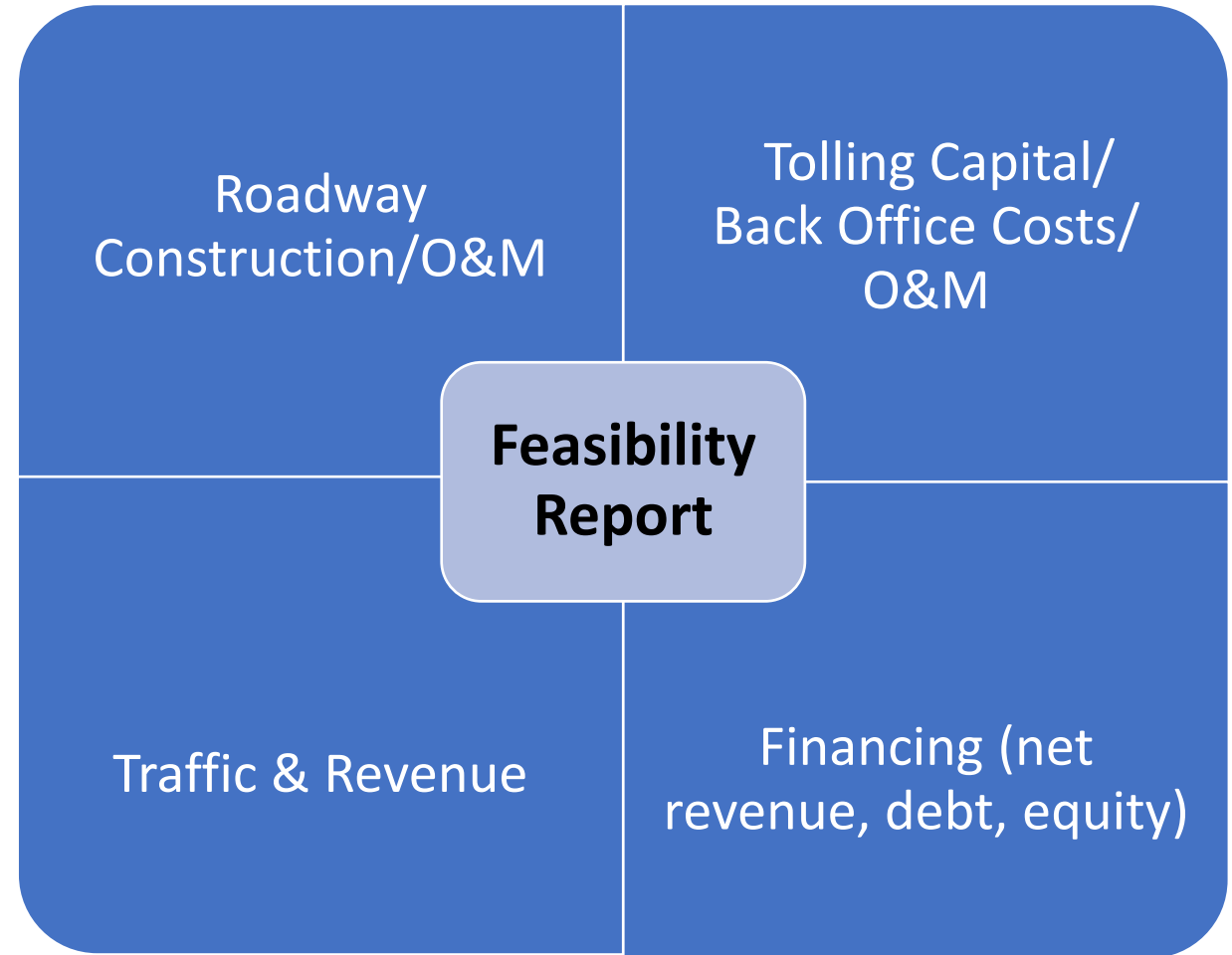


Highway 22 - Interstate 40  
Crawford and Sebastian Counties, Arkansas

# STUDY SCOPE & SCHEDULE

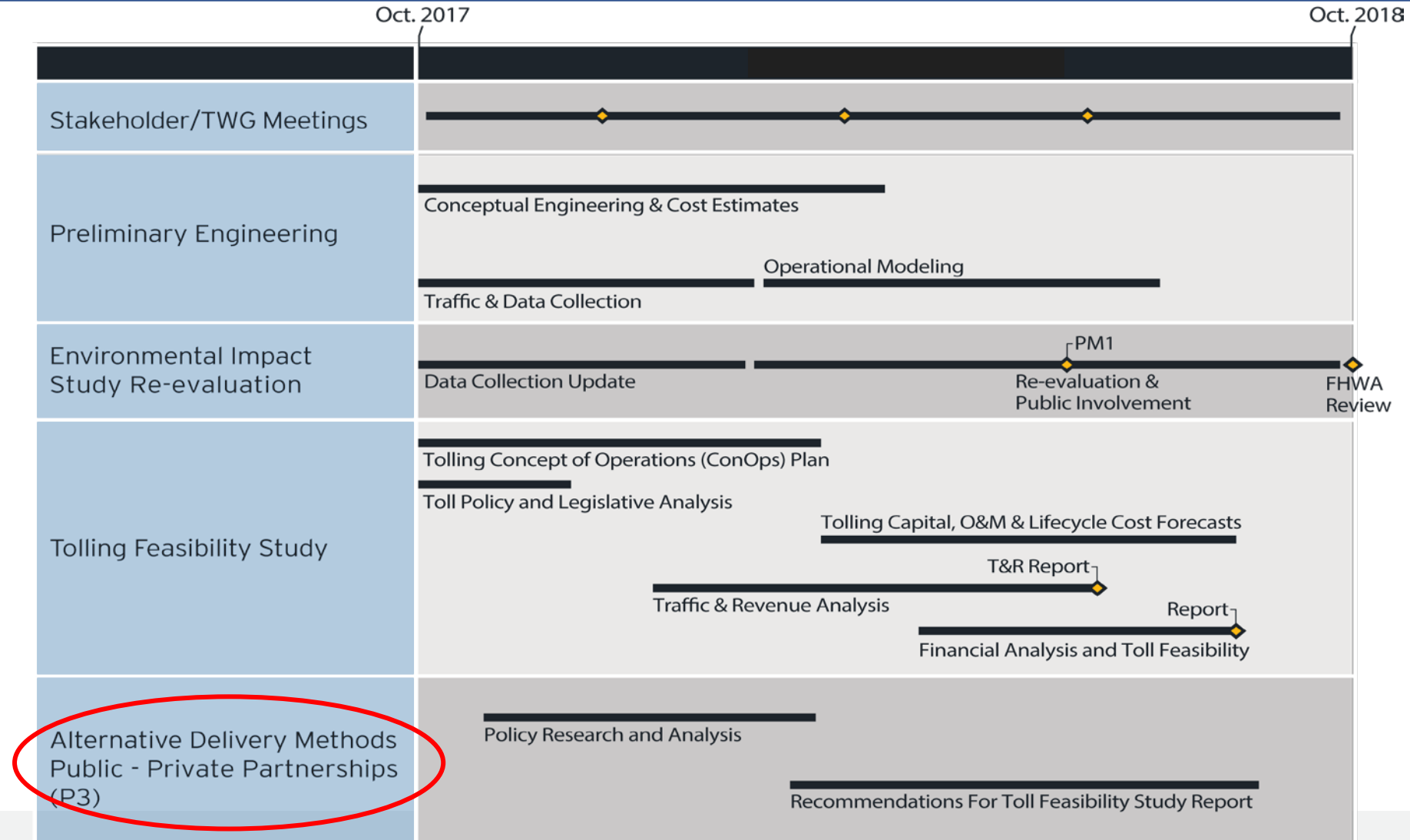
## Toll Feasibility

- Answers the questions
  - “Can tolls be efficiently implemented on the facility?”
  - “Can tolls provide funding for ongoing operation & maintenance (O&M) and/or fund a portion of construction costs?”



# STUDY SCOPE & SCHEDULE

## Alternative Delivery Methods – Public Private Partnerships (P3)



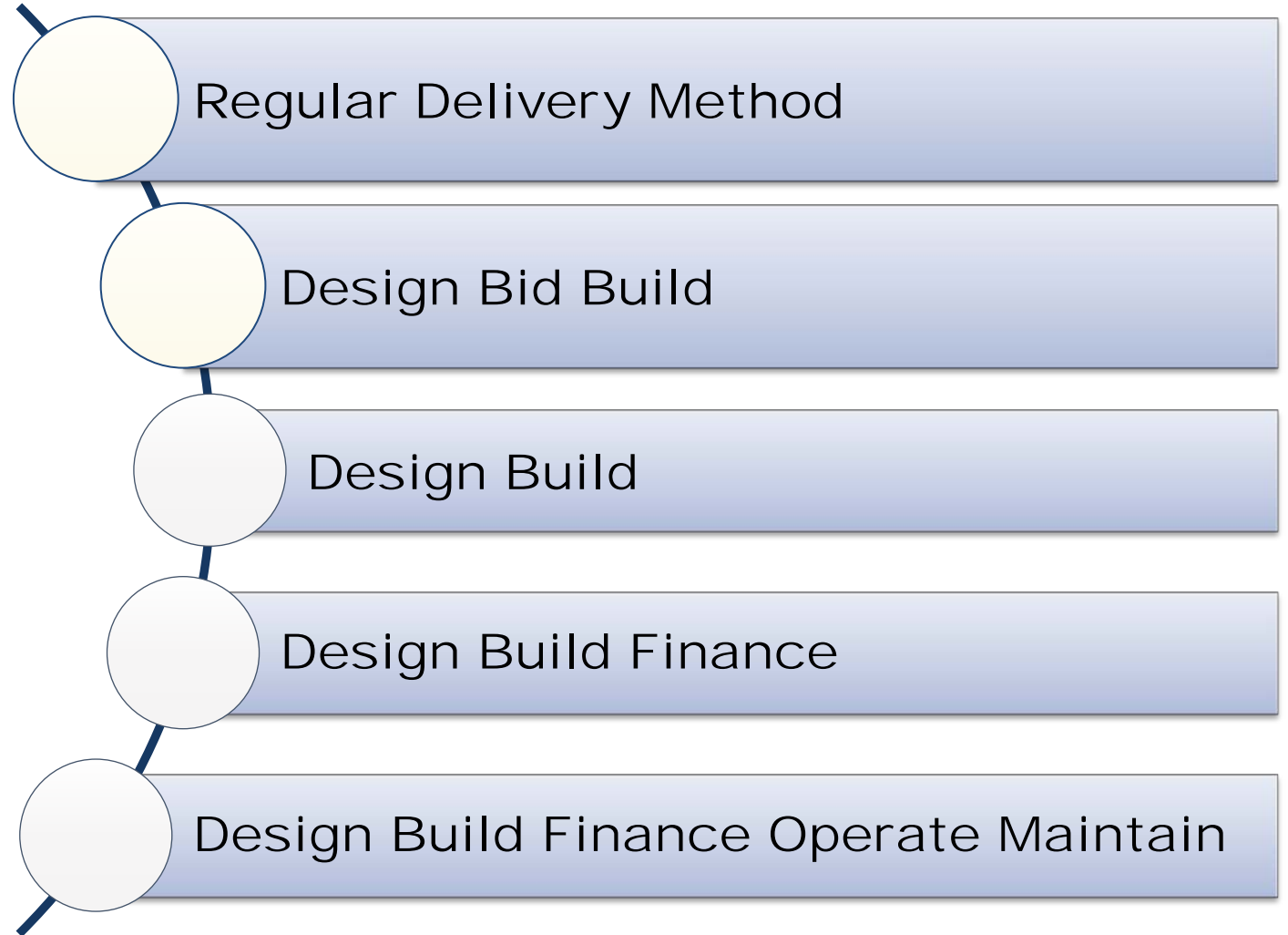
Highway 22 - Interstate 40  
Crawford and Sebastian Counties, Arkansas



# STUDY SCOPE & SCHEDULE

## Tolling and Alternative Delivery Policy Report

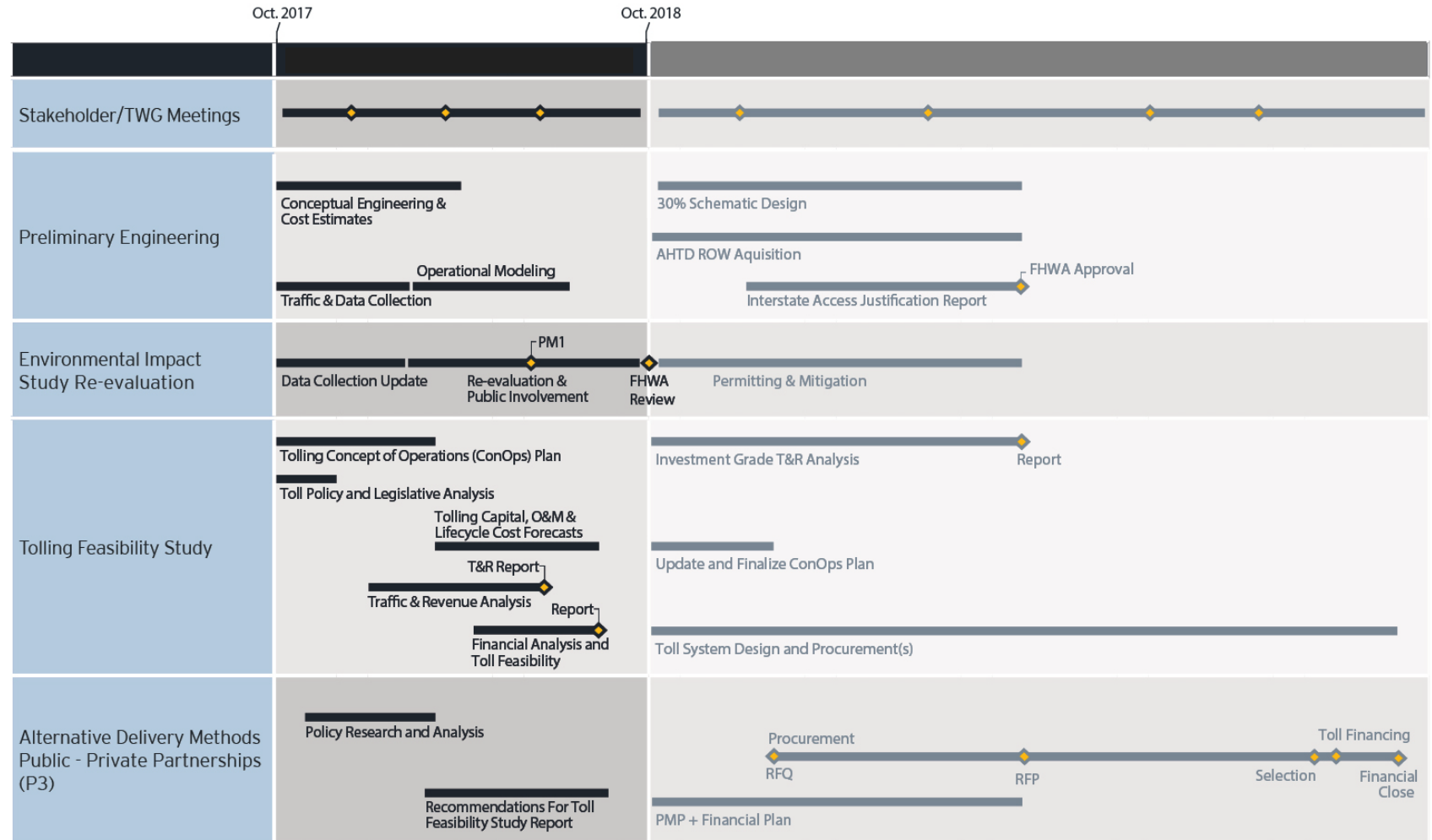
- **Tolling and Alternative Delivery**
  - Identify major policy decisions required to implement
  - Assess Arkansas' current legislation
  - Provide best practices from other states on how to craft legislative language



# FUTURE ACTIVITIES

## Future Activities

- Contingent on available funding
- Continue Stakeholder/TWG meetings
- Develop to 30% design
- ArDOT would progress into ROW acquisition upon environmental approval
- Tolling
  - Traffic and revenue
  - Toll system design and operations
- Alternative delivery
  - Procurement



\* Phase 2 contingent on available funding and tolling contribution



Highway 22 - Interstate 40  
Crawford and Sebastian Counties, Arkansas



# PUBLIC INVOLVEMENT

- Ongoing, throughout study
- Public Involvement Plan
- Stakeholder and TWG meetings
- Public meeting - spring 2018
- Web page - [www.ardot.gov/I-49.aspx](http://www.ardot.gov/I-49.aspx)

## Contact information

Jonathan Gardea, Public Involvement Representative

Phone: (972)628-3042

Email: [jgardea@hntb.com](mailto:jgardea@hntb.com)



Highway 22 - Interstate 40  
Crawford and Sebastian Counties, Arkansas



# Questions & Answers



Highway 22 - Interstate 40  
Crawford and Sebastian Counties, Arkansas





Highway 22 - Interstate 40  
Crawford and Sebastian Counties, Arkansas

# I-49 Technical Work Group Meeting #1

December 5, 2017



# AGENDA

## Technical Working Group Meeting #1

- Role and responsibilities of Technical Work Group (TWG)
- Break out session
- Final comments and questions
- Next meeting (tentative)
- Adjourn



Highway 22 - Interstate 40  
Crawford and Sebastian Counties, Arkansas



# TECHNICAL WORK GROUP

## Roles & Responsibilities

- Attend and participate in TWG meetings
- Serve as a resource for the I-49 study
- Provide timely information and input
- Participate in the environmental process and advise on:
  - Upcoming planning and programming studies
  - Work that may influence traffic and travel patterns
  - Concerns regarding potential environmental or socioeconomic impacts
  - Corridor vision, goals, and alternatives



# BREAKOUT SESSION

**Goal: To collaboratively identify possible issues, concerns and constraints along the study area.**

## **Ground Rules:**

- **Go to your assigned table**
- **Open discussion for 30 minutes**
- **Write on the maps**
- **Summarize findings and report back to the group**



Highway 22 - Interstate 40  
Crawford and Sebastian Counties, Arkansas



# BREAKOUT SUMMARIES

## WHAT DID YOU LEARN?



Highway 22 - Interstate 40  
Crawford and Sebastian Counties, Arkansas



# NEXT STEPS

- Comment Forms
- Final Comments & Questions
- Next Meeting
- Adjourn

