

HARRISON ROTARY CLUB

STACY BURGE
DISTRICT 9 ENGINEER

FEBRUARY 26, 2026





ARDOT OVERVIEW



ARDOT QUICK FACTS

**3RD LARGEST
STATE AGENCY**

**MAINTAIN MORE
THAN 16,000 MILES OF
HIGHWAY & MORE
THAN 7,000 BRIDGES**

**CENTRAL
OFFICES
LOCATED IN
LITTLE ROCK**

**HIGHWAY SYSTEM
VALUED AT \$140
BILLION**

**HOME TO OLDEST LAW ENFORCEMENT
AGENCY IN ARKASNAS**



ARKANSAS STATE HIGHWAY COMMISSION



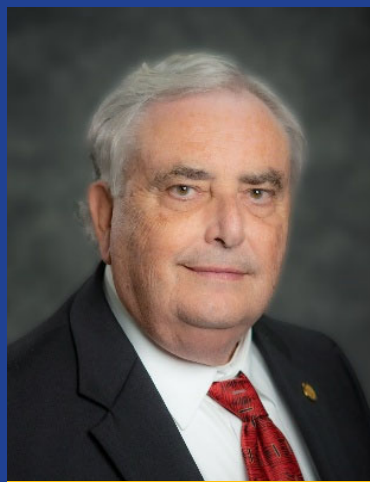
**Chairman
Philip Taldo**



**Vice Chairman
Keith Gibson**



**Commissioner
Marie Holder**



**Commissioner
David Haak**



**Commissioner
Jerry L. Halsey, Jr.**

Citizens of Arkansas

Governor & Legislature

Internal Audit

Highway Commission

Director

Chief Engineer - Preconstruction

Asst. Chief Engineer Planning

Planning & Research

Environmental

Consultant Contracts

Asst. Chief Engineer Program Delivery

Alternative Delivery

Local Programs

Program Management

Asst. Chief Engineer Design

Bridge

Right of Way

Roadway Design

State Aid

Surveys

Chief Engineer - Operations

Asst. Chief Engineer Construction

Construction

Materials

Asst. Chief Engineer Maintenance

Maintenance

Bridge Operations

Transportation Systems Management & Operations

10 Districts

Chief - Administration

Asst. Chief Administration

Human Resources

Benefits and Compensation

Information Technology

Equipment & Procurement

Fiscal Services

Civil Rights

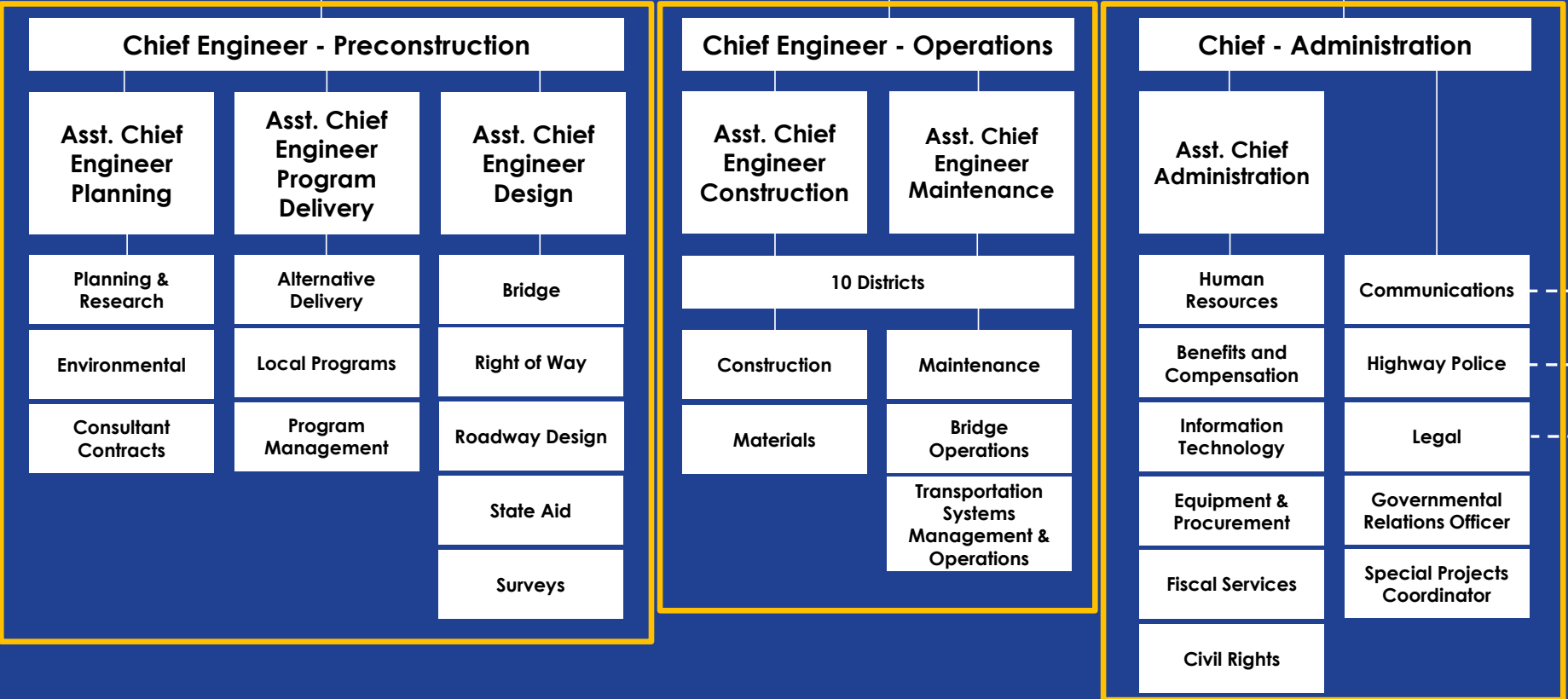
Communications

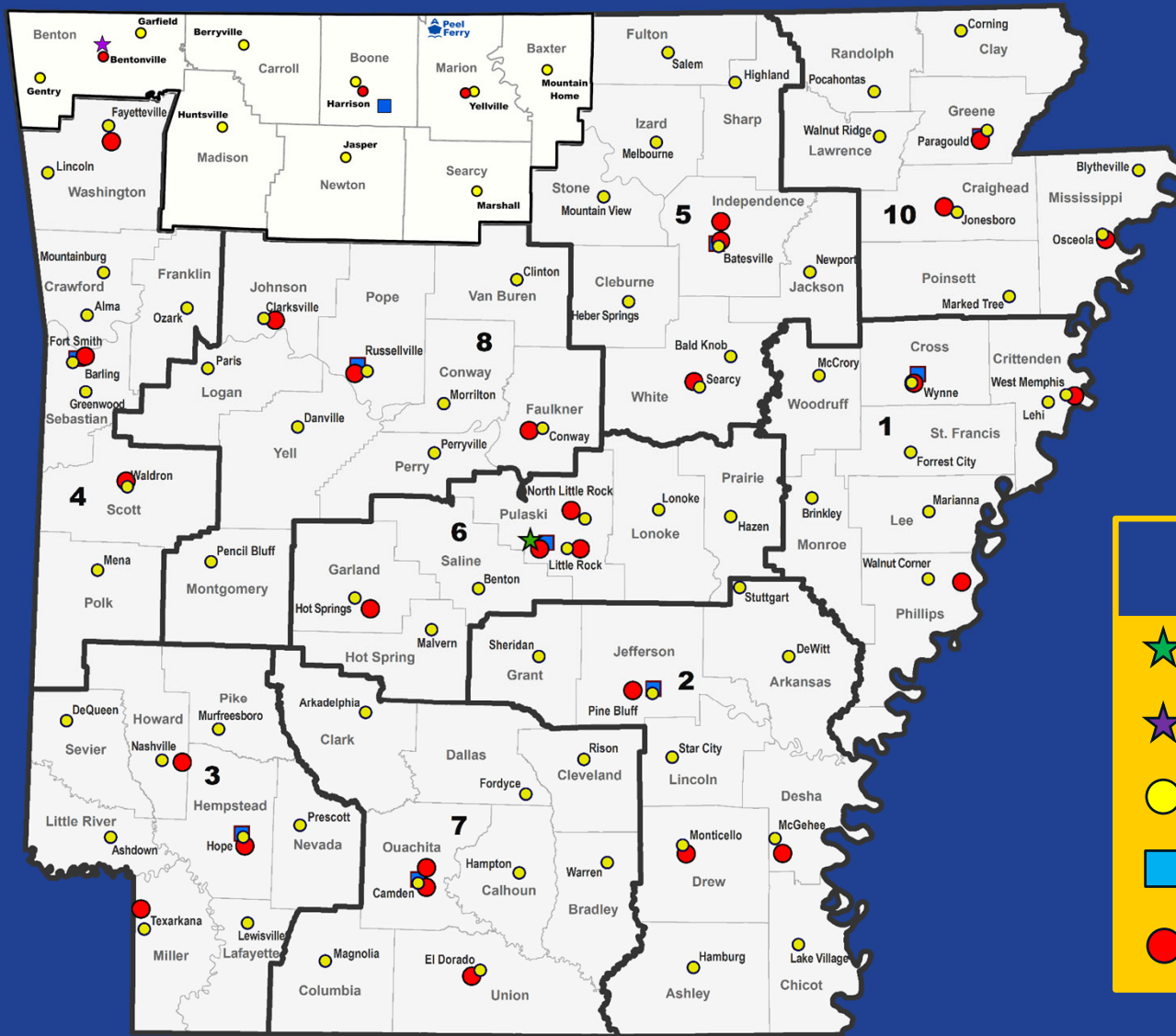
Highway Police

Legal

Governmental Relations Officer

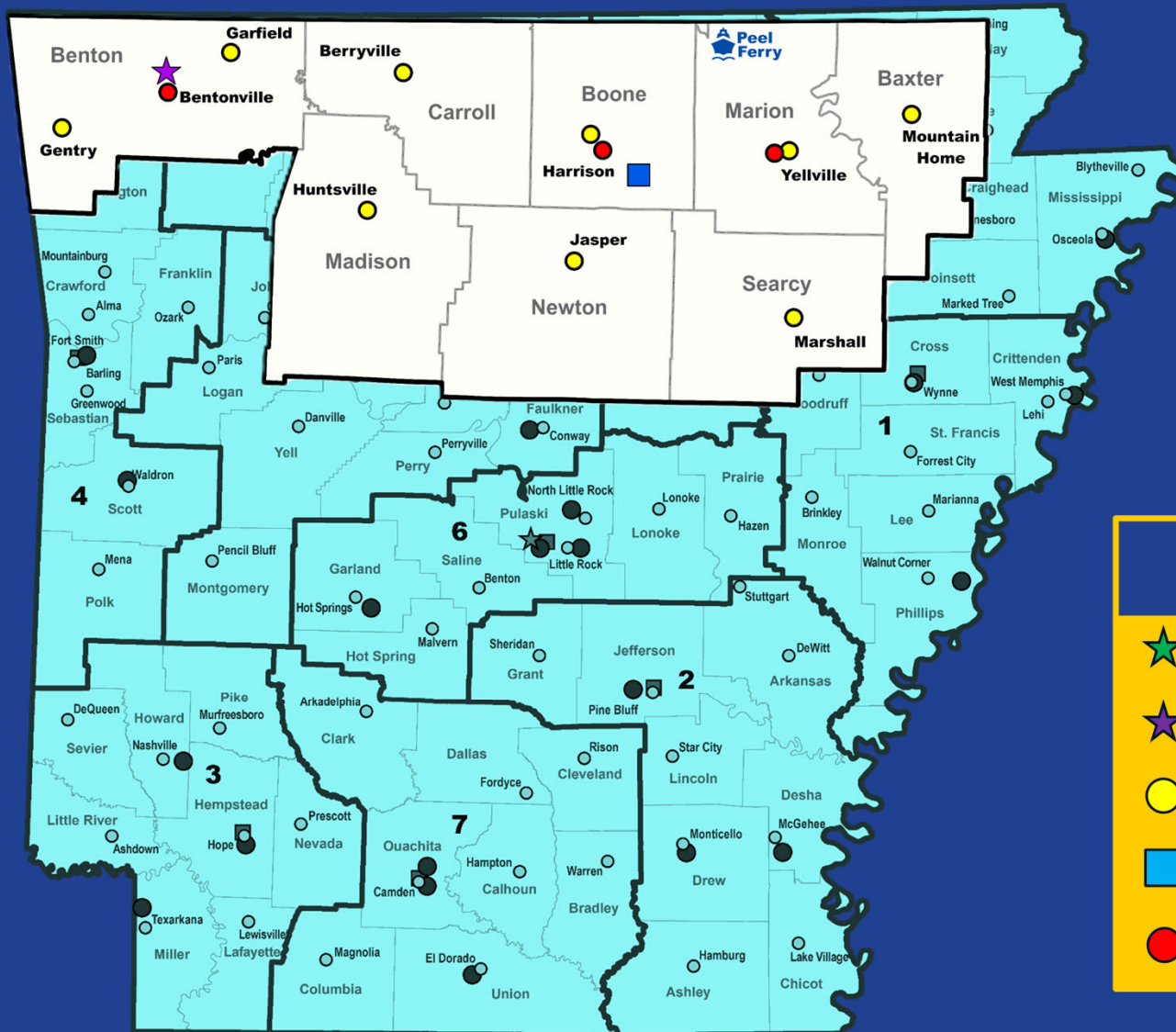
Special Projects Coordinator





FACILITY TYPE

- ★ Central Offices
- ★ Northwest Office
- Area Headquarters
- District Headquarters
- Resident Engineer Offices

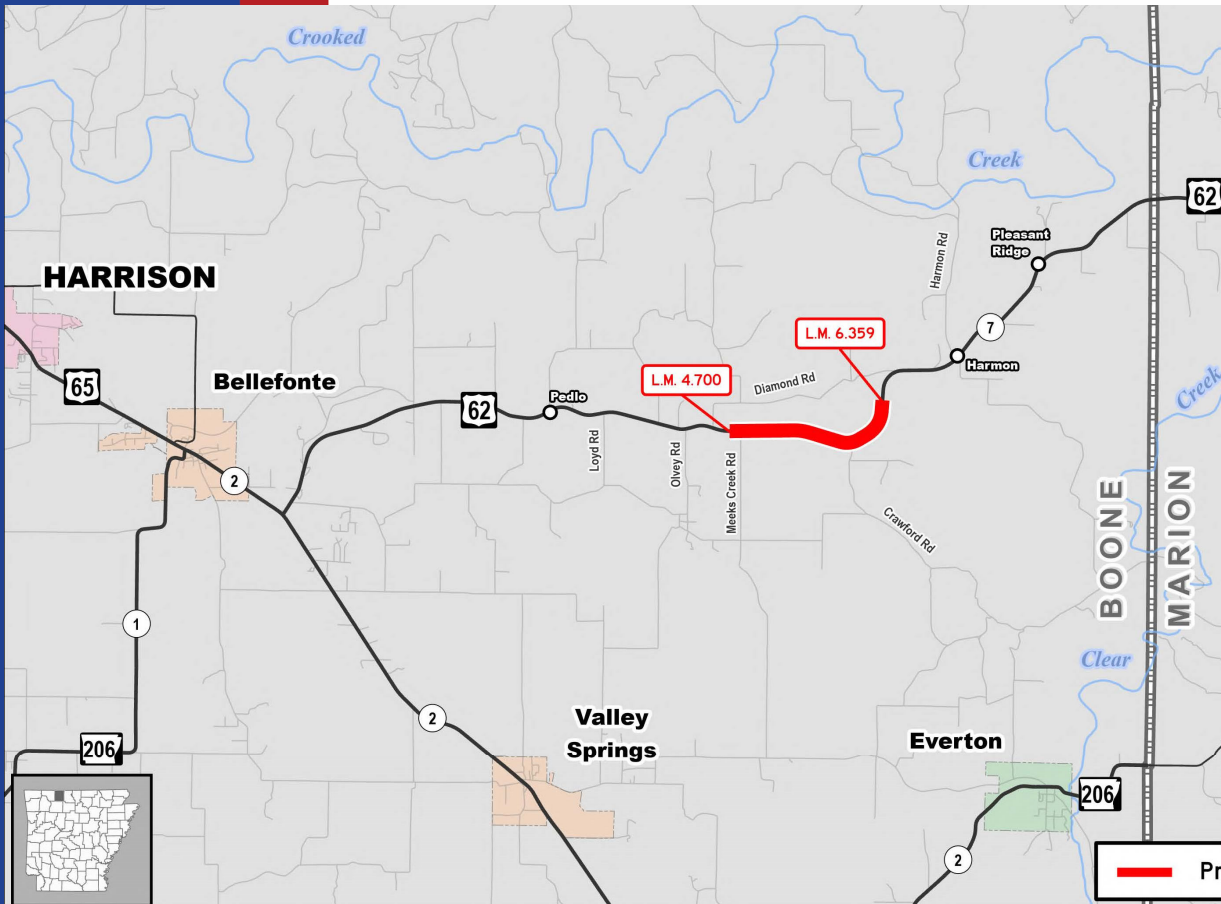


FACILITY TYPE

- ★ Central Offices
- ★ Northwest Office
- Area Headquarters
- District Headquarters
- Resident Engineer Offices



CURRENT PROJECTS



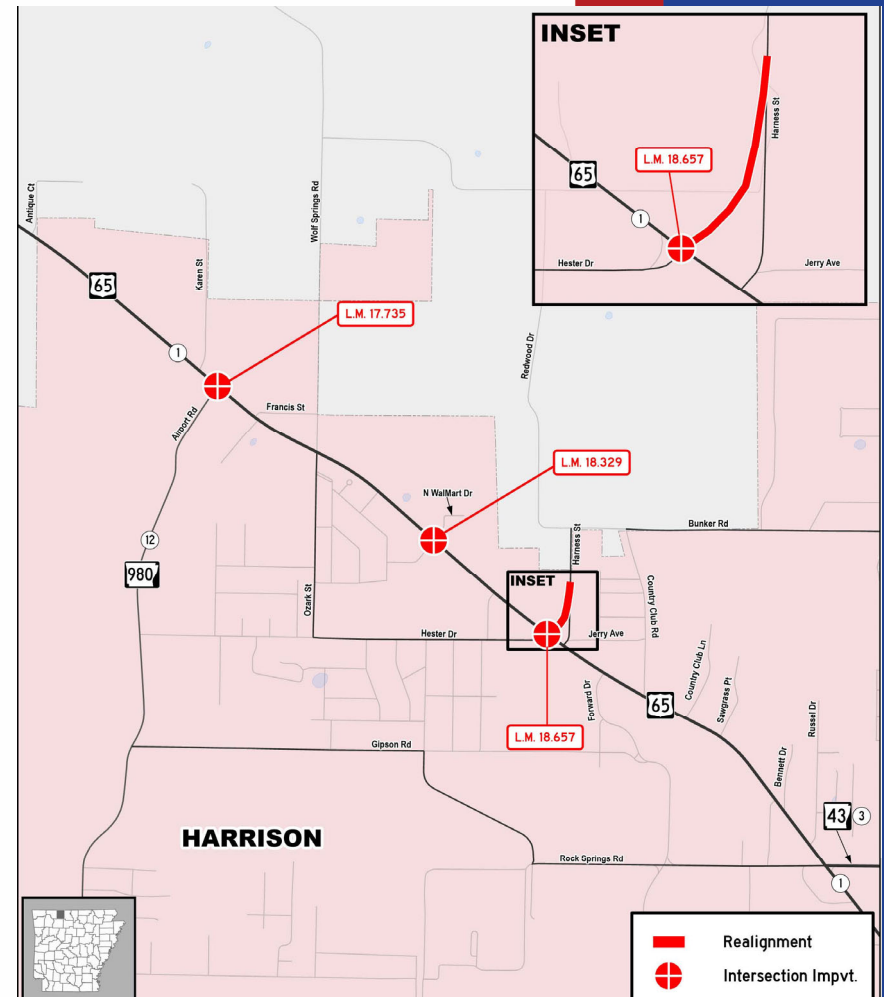
BELLEFONTE-MARION CO. PASSING LANES

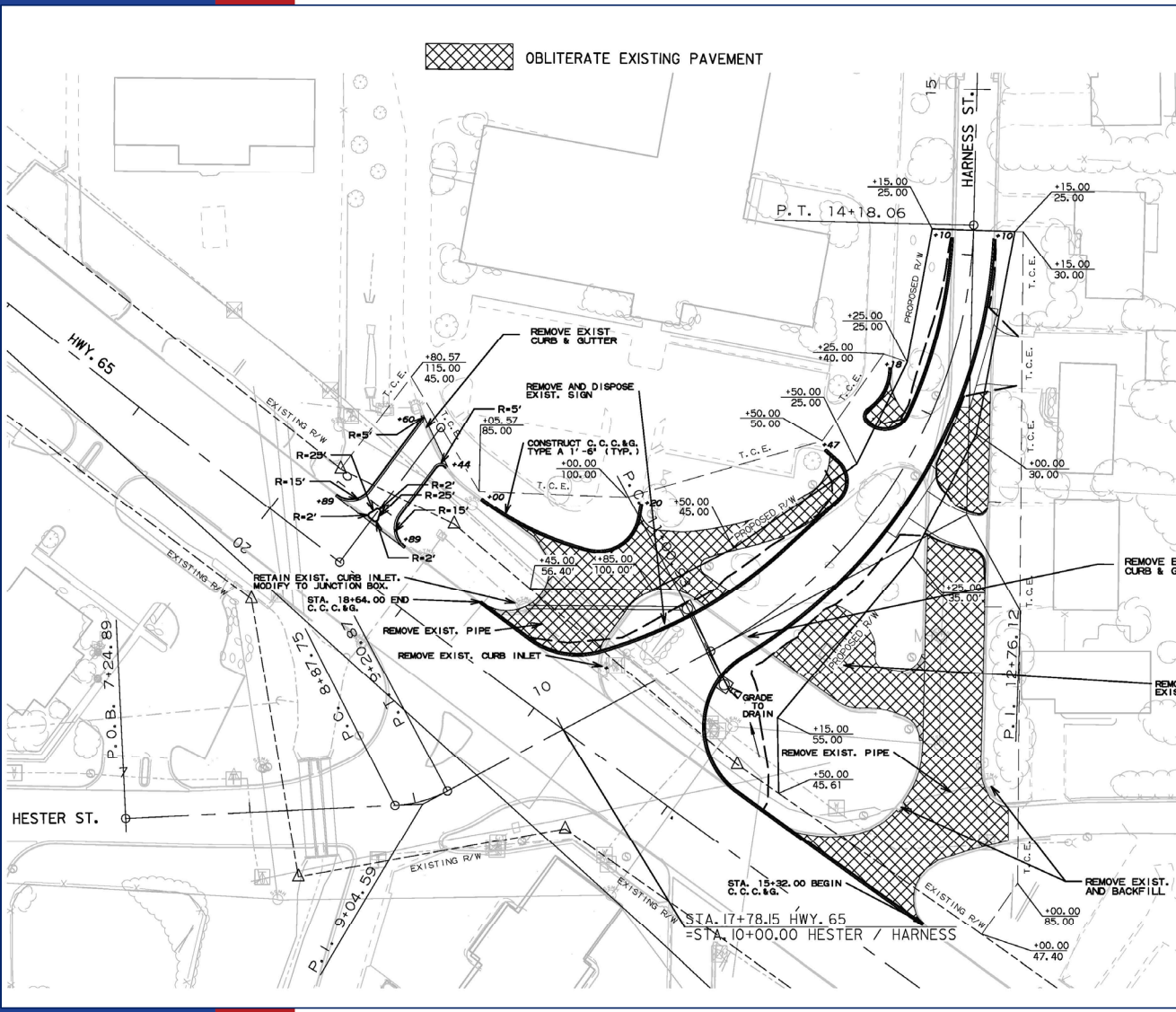
- Alternating Passing Lane
- 1.7 Miles
- \$11.5 Million
- ECD - Fall 2027



HWY. 65 INTERS. IMPVTS. & SIGNAL COORDINATION

- Intersection Improvement Project
- 3 intersections
- Contract Cost: \$2,347,027
- Letting Date: 11/6/2024
- Est. Completion Date: Late Spring





Highway 65

BOONE COUNTY

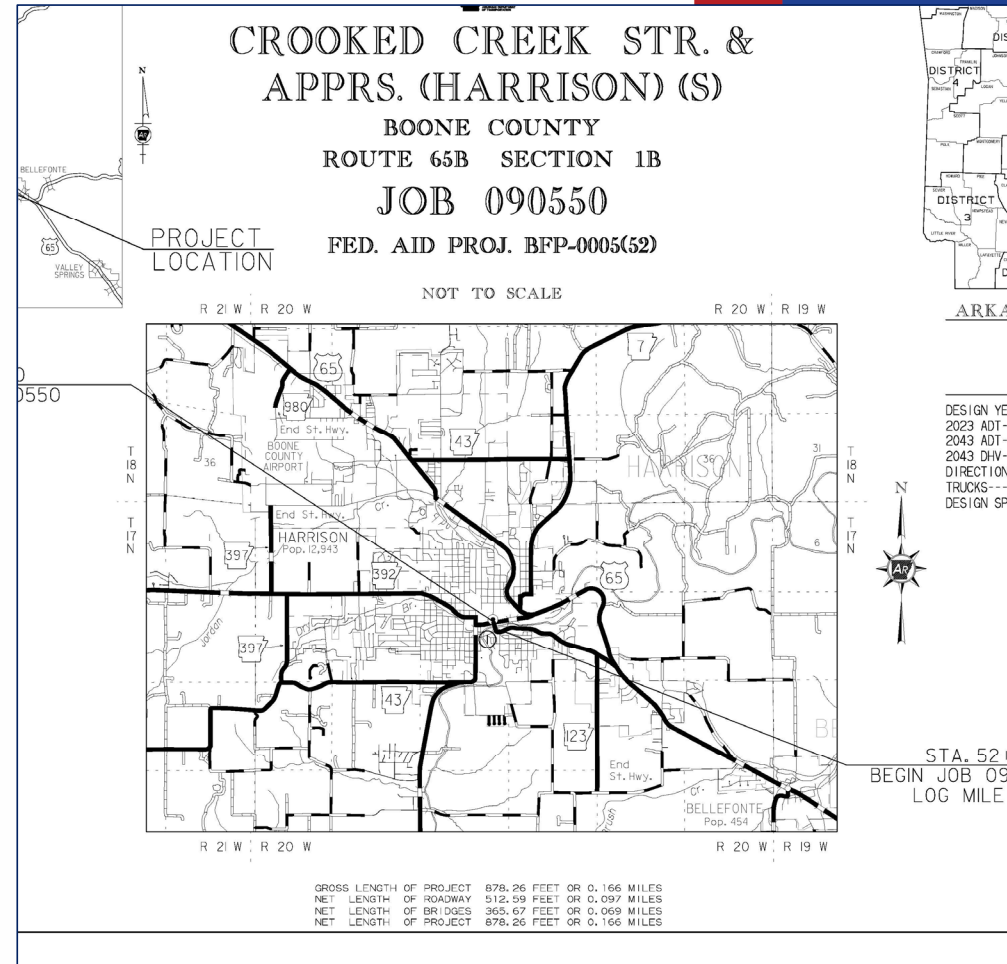
- Hwy. 65 & Harness St. Intersection



HIGHWAY 65B

CROOKED CREEK STR. & APPR.

- Bridge Replacement
- Let in September of 2023
- \$9.8 Million
- Late Summer Completion Date

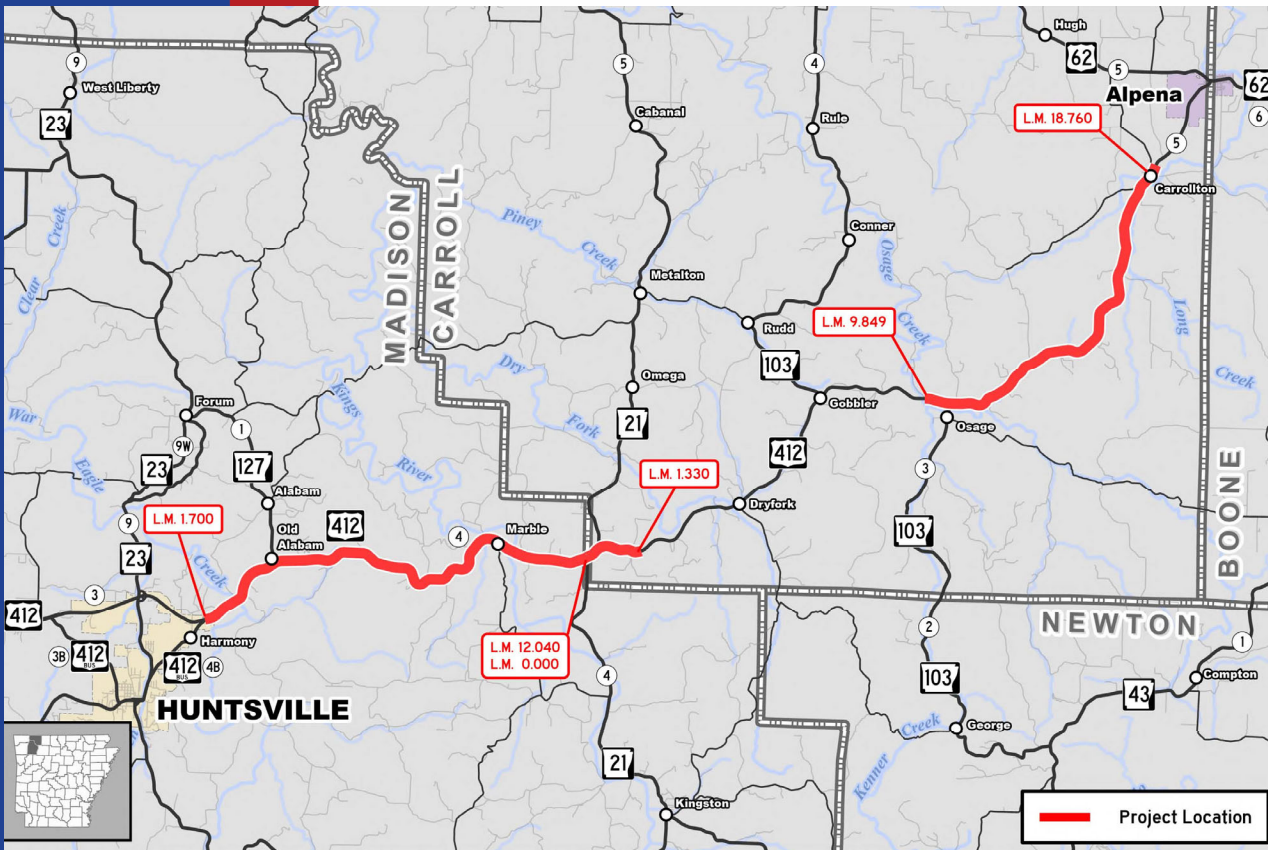












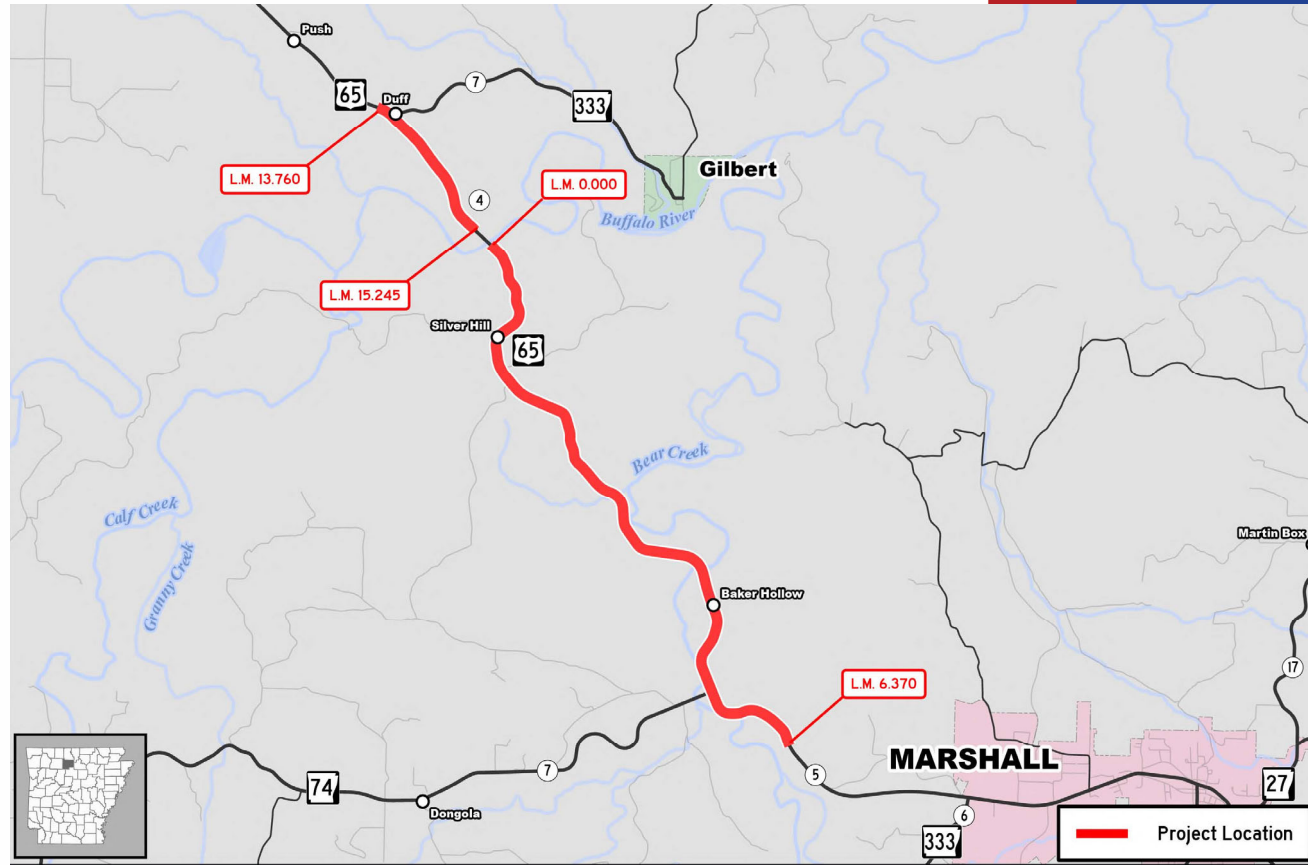
MADISON & CARROLL CO.

- 2" Overly
- 20 Miles
- Amount: \$7.3 M



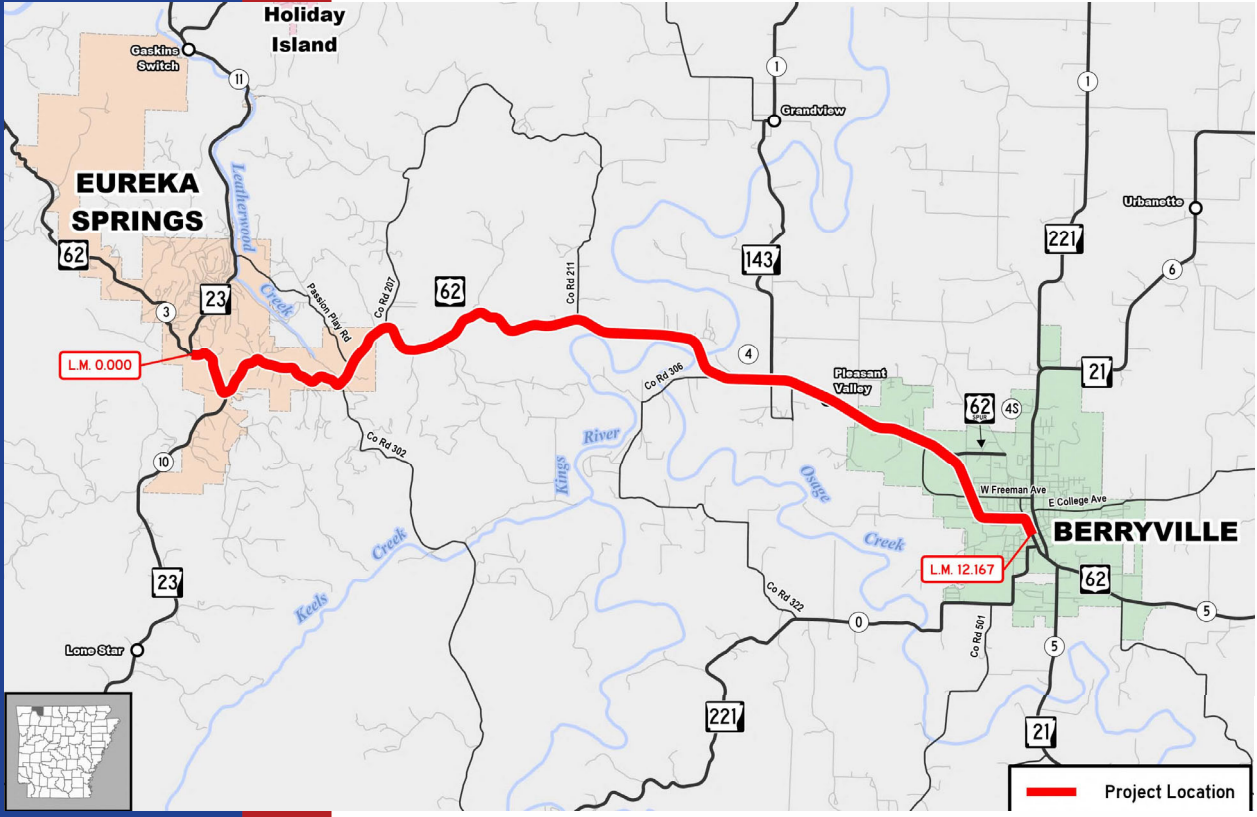
SEARCY COUNTY

- Mill & 2" Overly
- 7.625 Miles
- \$2,751,148
- Est Completion Date: 11/26





UPCOMING PROJECTS



CARROLL COUNTY

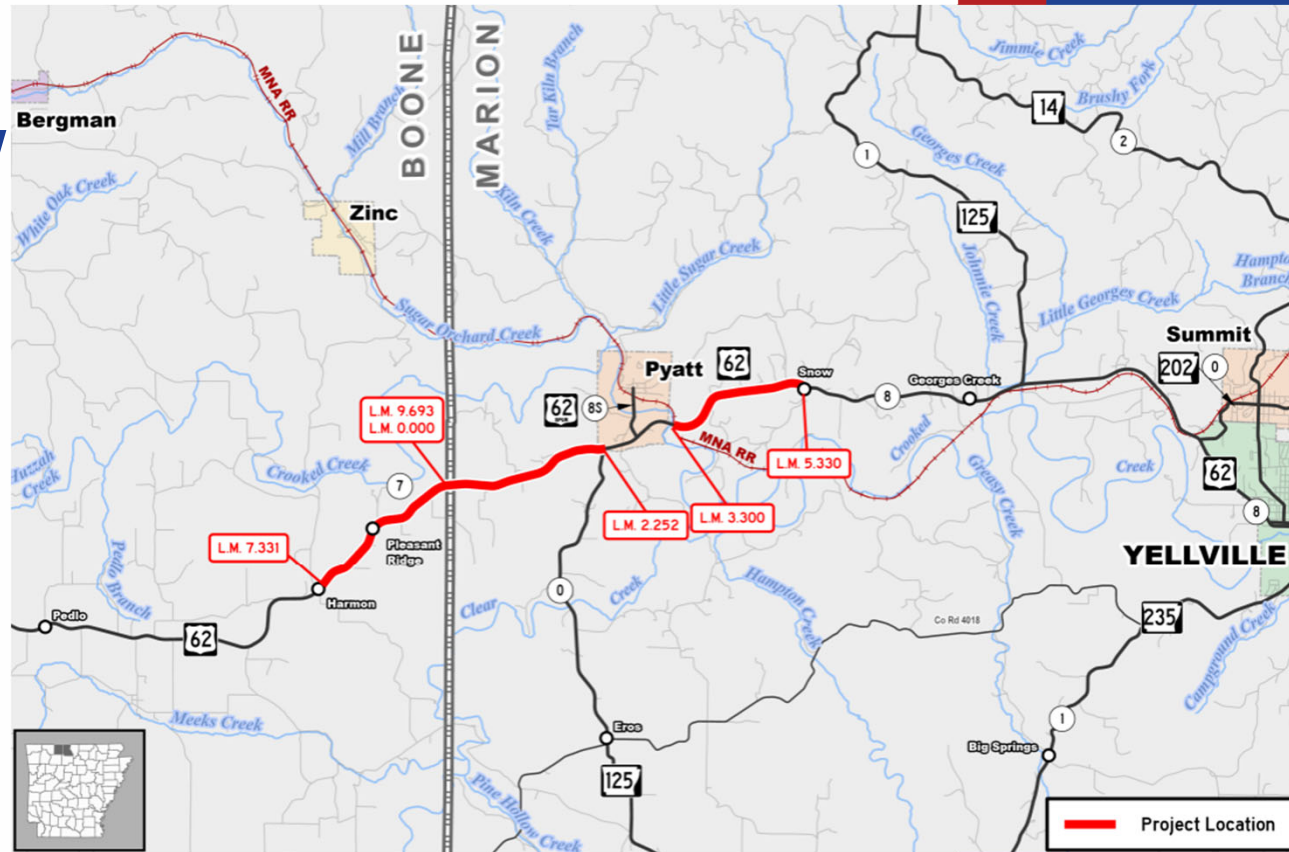
- Mill & Overlay- 3 miles
- 2" Overlay - 9 Miles
- April 2026 Letting

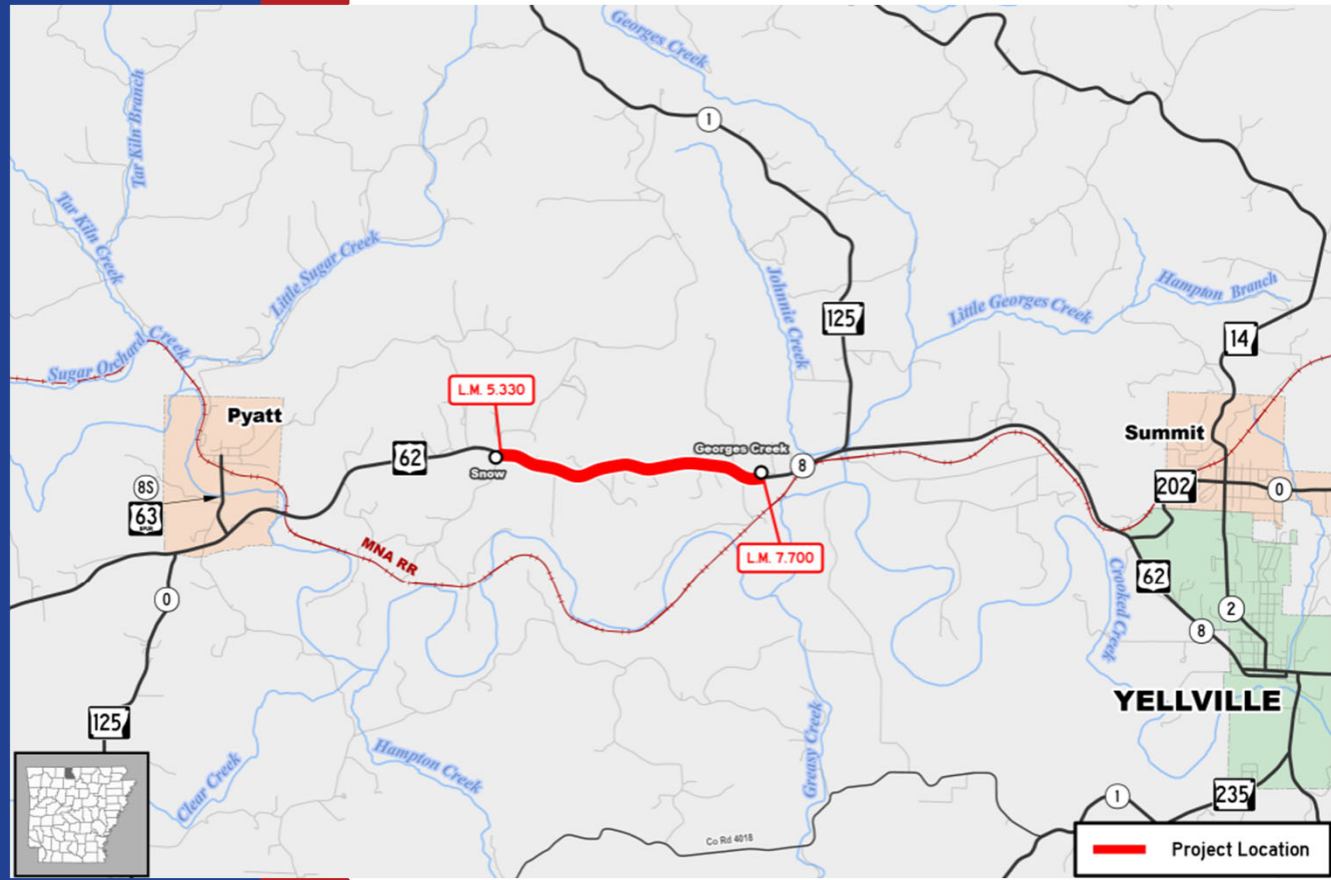


HIGHWAY 62

HARMON TO SNOW

- Passing lanes
- Estimated Cost: \$20-30 Million
- 7 Miles
- Shovel Ready: Early 2028





HIGHWAY 62

MARION COUNTY

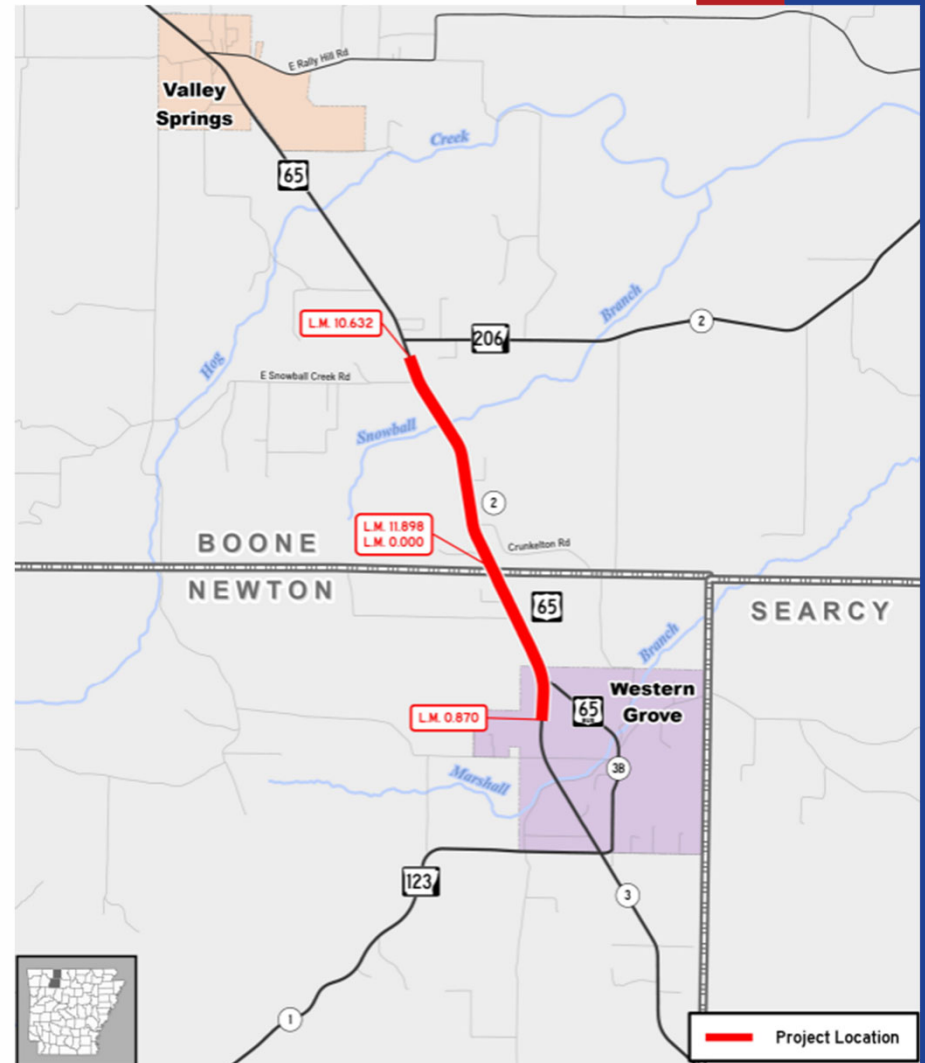
- Alternating Passing Lanes
- 2 Miles
- Estimated Cost: \$5-10 Million
- Shovel Ready: 2029

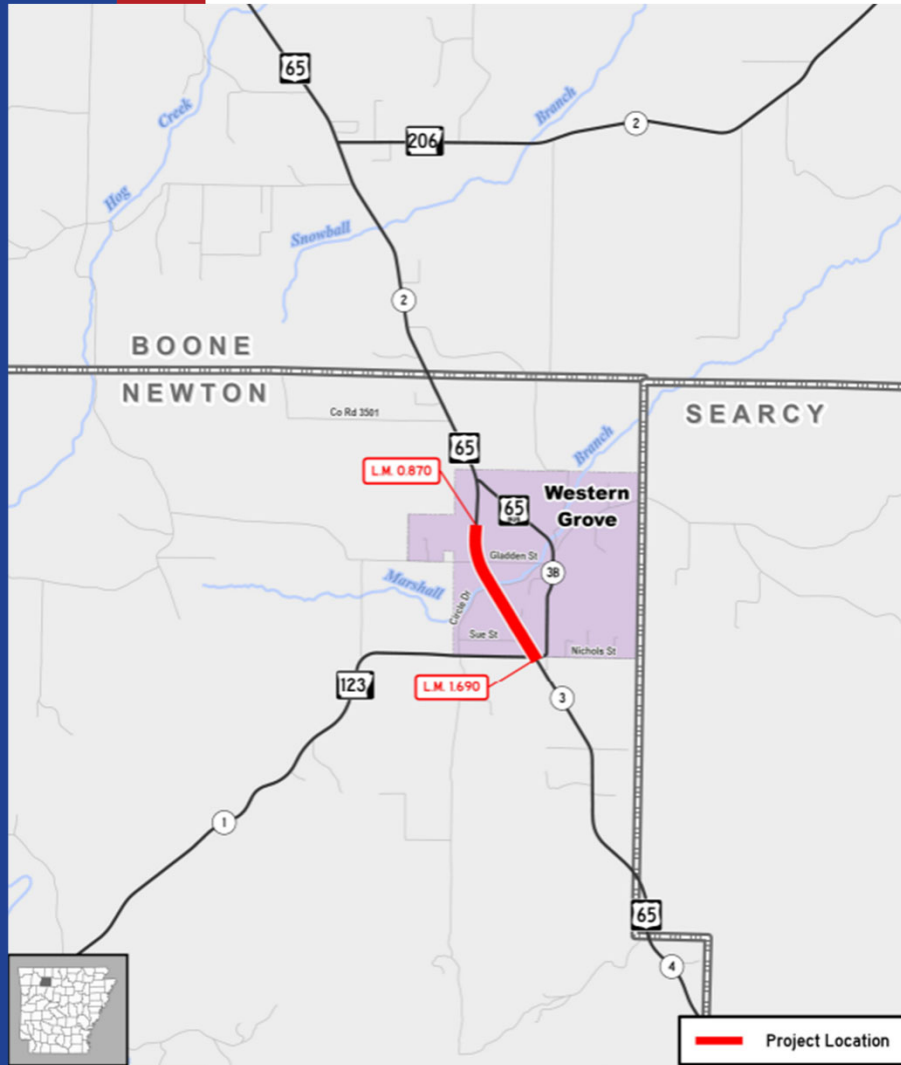


HIGHWAY 65

HIGHWAY 206 TO WESTERN GROVE

- Major widening
- 2 Miles
- Estimated Cost: \$30-40 million
- Shovel Ready: Late 2027





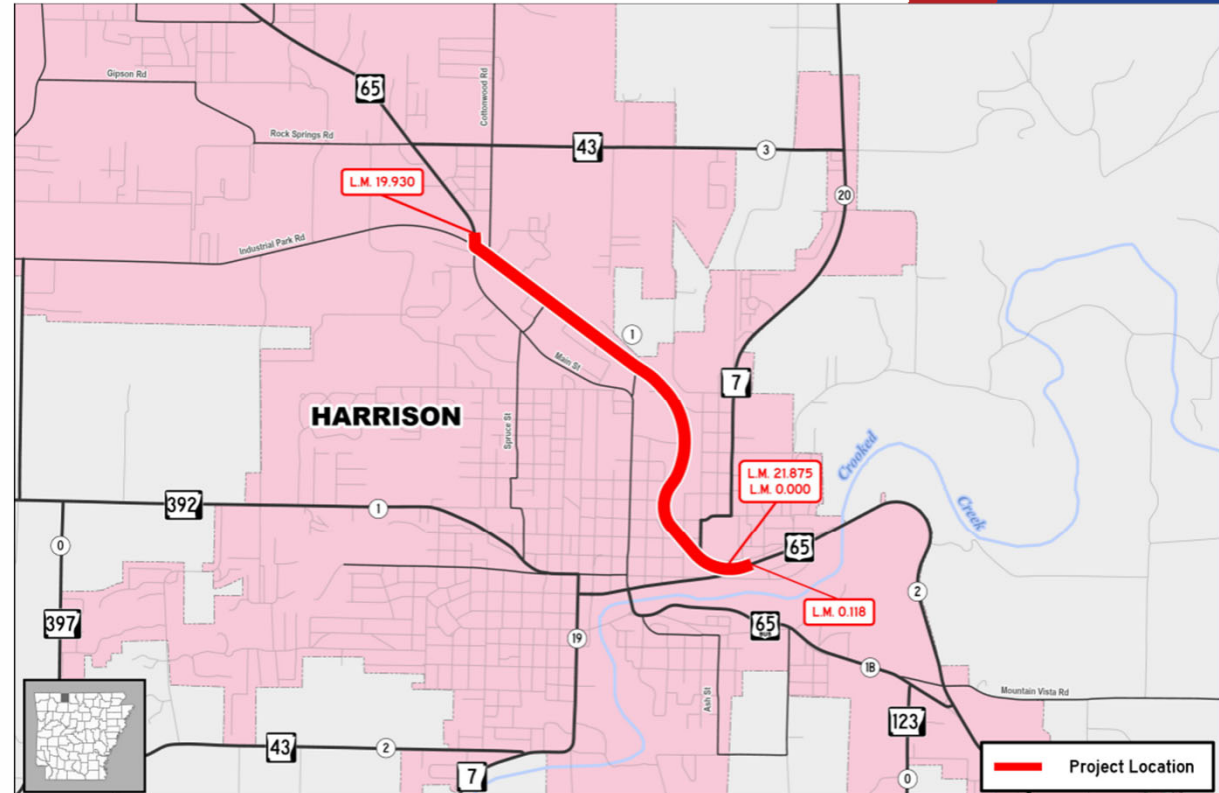
HIGHWAY 65

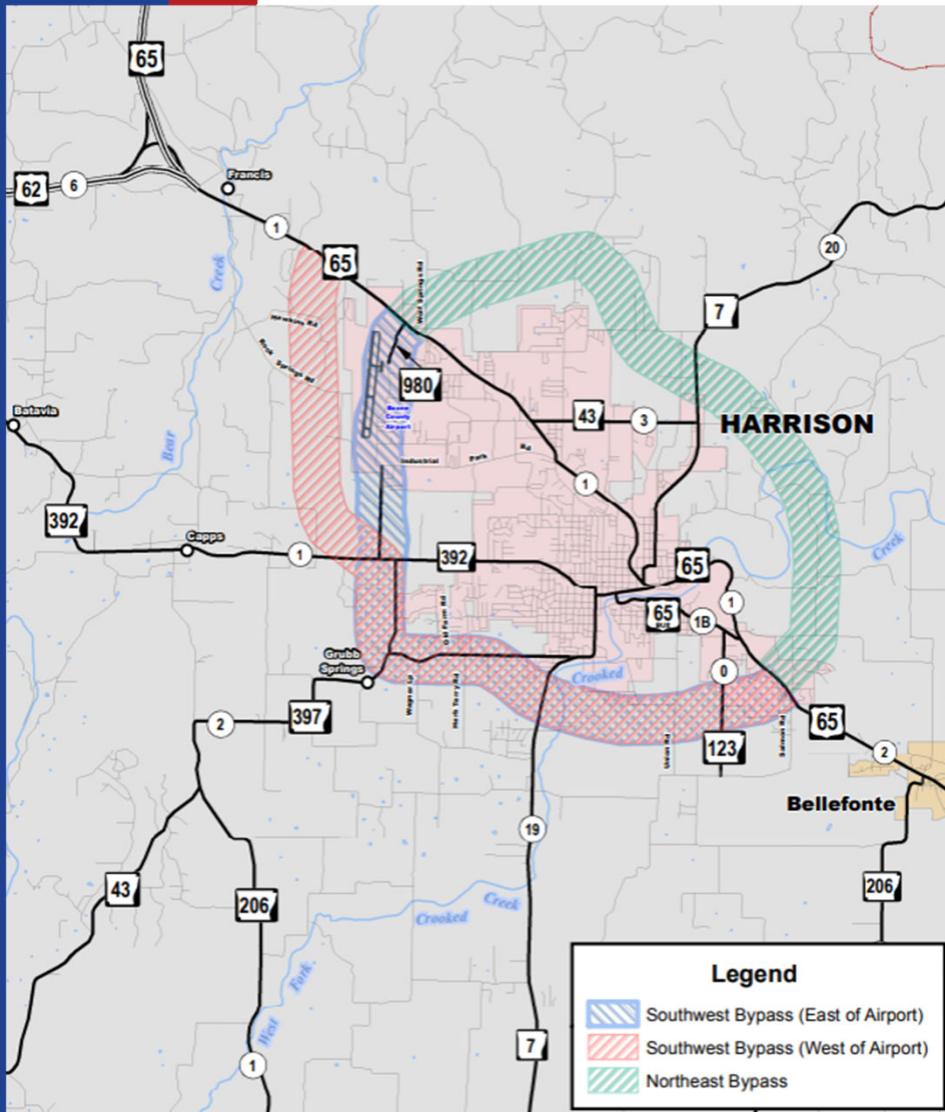
WESTERN GROVE TO HIGHWAY 123

- Structure & Approaches
- < 1 Mile
- Estimated Cost: \$10-15 Million
- Shovel Ready: 2029

HIGHWAY 65 **INDUSTRIAL PARK RD TO HIGHWAY 7**

- Safety improvements
- Intersection Improvements
- 2 Miles
- Estimated Cost: \$15-20 million





HARRISON BYPASS

BOONE COUNTY

- Planning study completed in 2014
- Evaluated Various Potential Routes



WINTER OPERATIONS AND FERN COSTS



"A" Routes
"B" Routes
"C" Routes

Winter Storm Fern 2026

* Snow Storm *

@WhisperingMoonAmbience



Winter

ern 2026

Winter Storm Fern Summary

Materials

Type	District 9	State Wide
Rock Salt (C UYD)	400	3,692
Treated Salt (C UYD)	4,953	38,370
Brine (GAL)	534,196	3,200,096
Super Brine (GAL)	33,503	485,494
Beet Juice (GAL)	23,188	139,470
Plow Blades (EACH)	91	1,840

Equipment Used

	District 9	State Wide
Snowplow Trucks	61	526
Motor Graders	0	113
Salt Spreaders	61	484
Front End Loaders/Backhoes	8	118
Skid Steers	2	37
Slide-in Brine Tanks	22	157
5,000 GAL Brine Tankers	3	31

Lane Miles Pretreated and Plowed

	District 9	State Wide
Pretreated	3,818	33,801
Plowed	3,818	38,036

HARRISON ROTARY CLUB

STACY BURGE
DISTRICT 9 ENGINEER

FEBRUARY 26, 2026

