

# HARRISON NOON LIONS CLUB

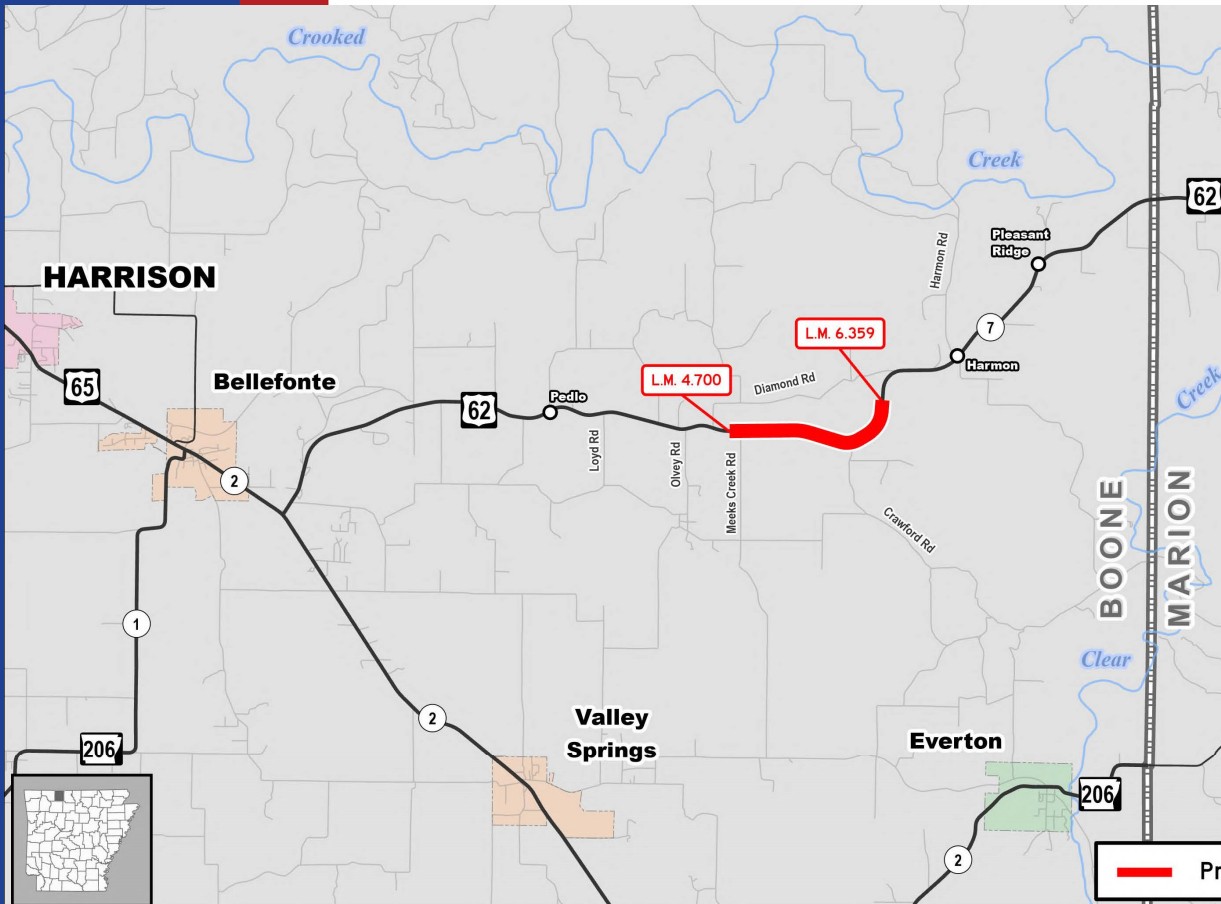
STACY BURGE  
DISTRICT 9 ENGINEER

MARCH 4, 2026





# CURRENT PROJECTS



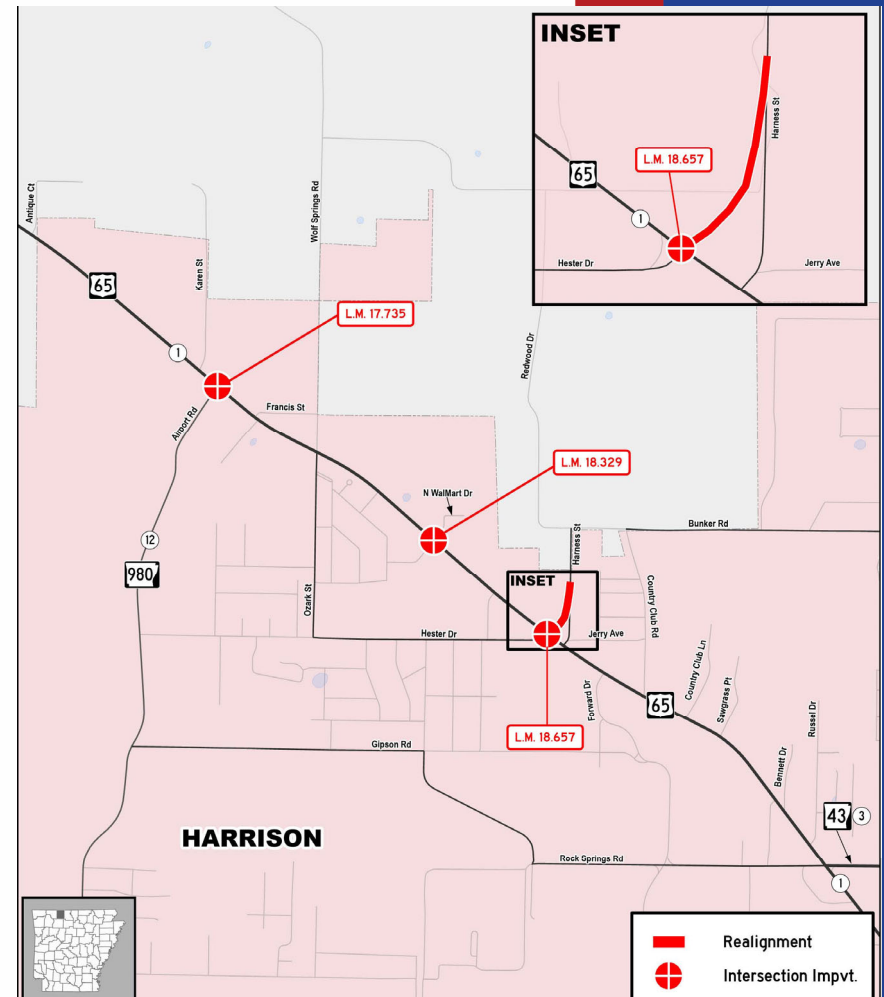
## BELLEFONTE-MARION CO. PASSING LANES

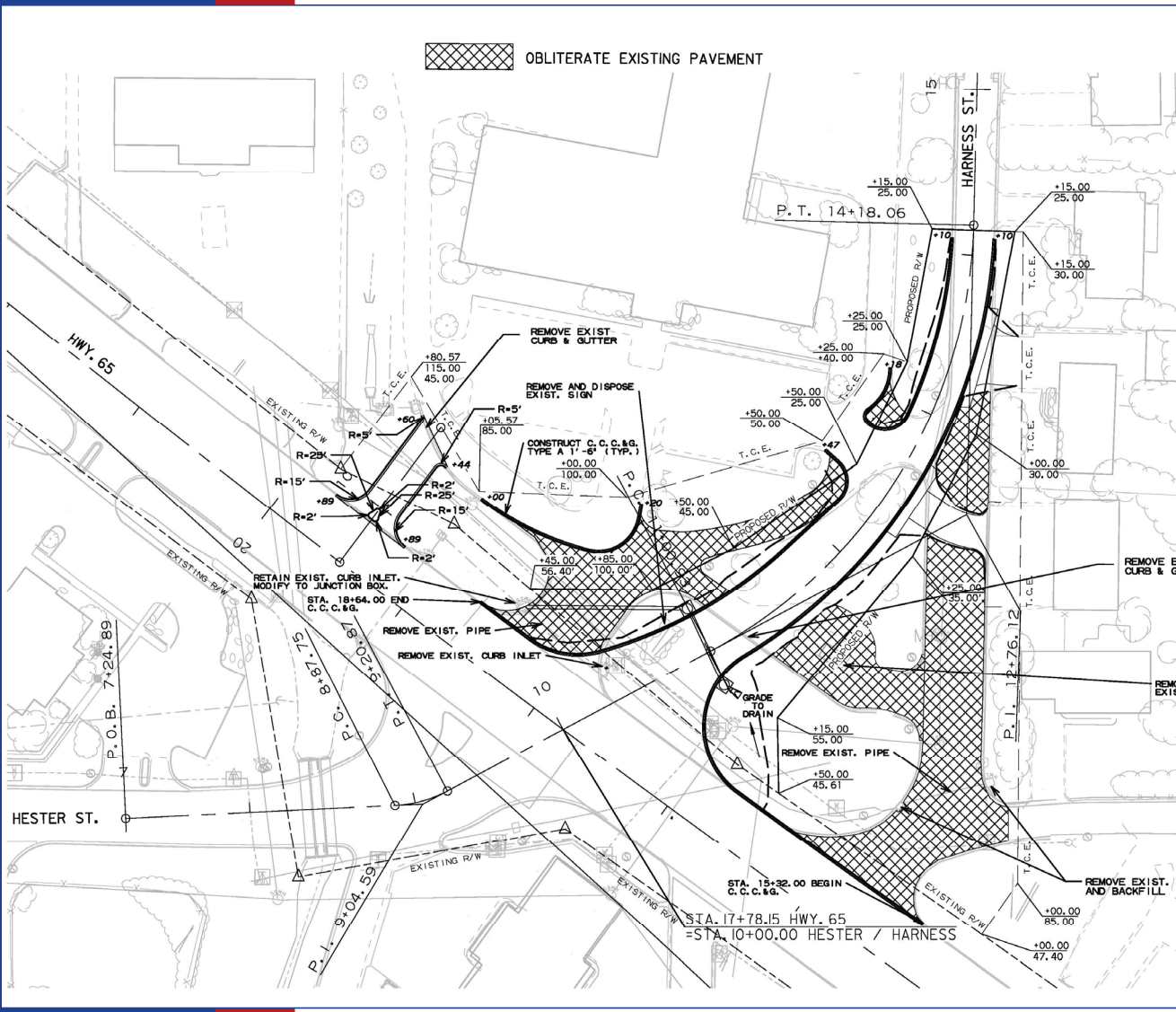
- Passing Lanes
- 1.7 Miles
- \$11.5 Million
- ECD - Fall 2027



## Hwy. 65 Inters. Impvts. & Signal Coordination

- Intersection Improvement Project
- 3 intersections
- Contract Cost: \$2,347,027
- Letting Date: 11/6/2024
- ECD: Summer 2026





# Highway 65

## BOONE COUNTY

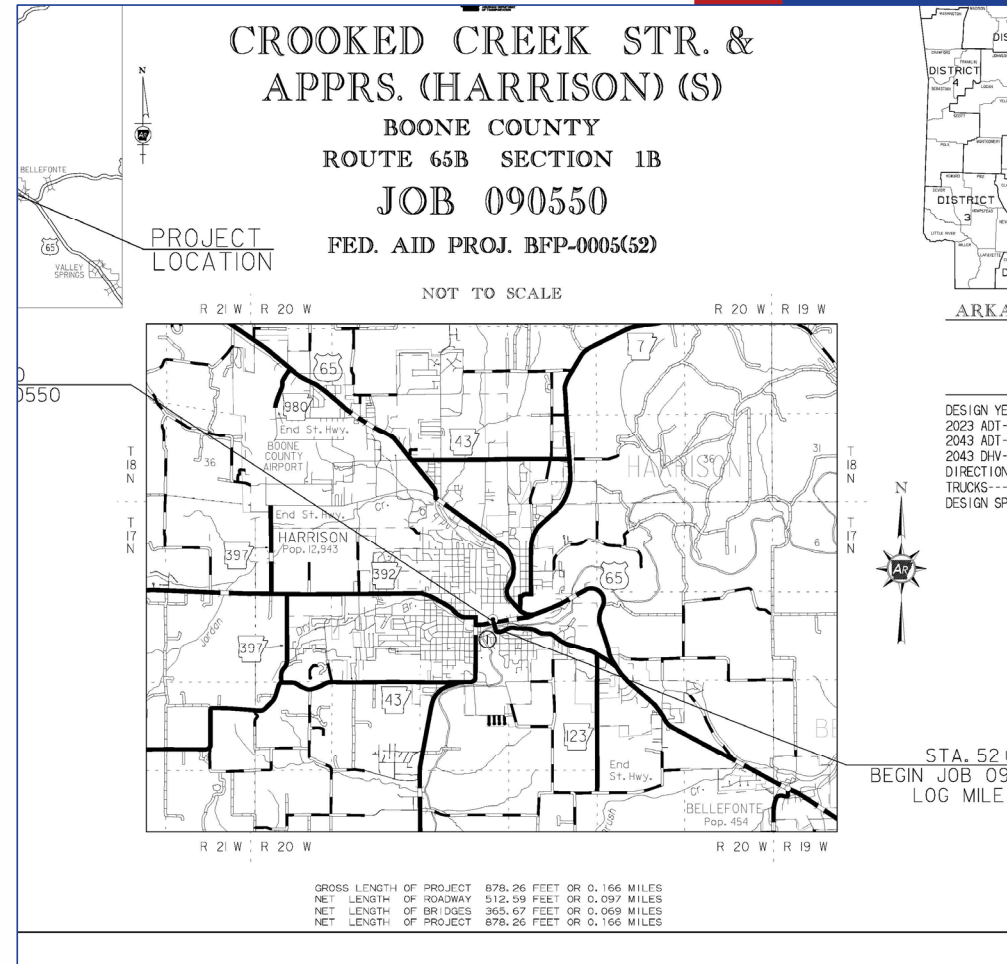
- Hwy. 65 & Harness St. Intersection



# HIGHWAY 65B

## CROOKED CREEK STR. & APPR.

- Bridge Replacement
- Let in September of 2023
- \$9.8 Million
- Late Summer Completion Date

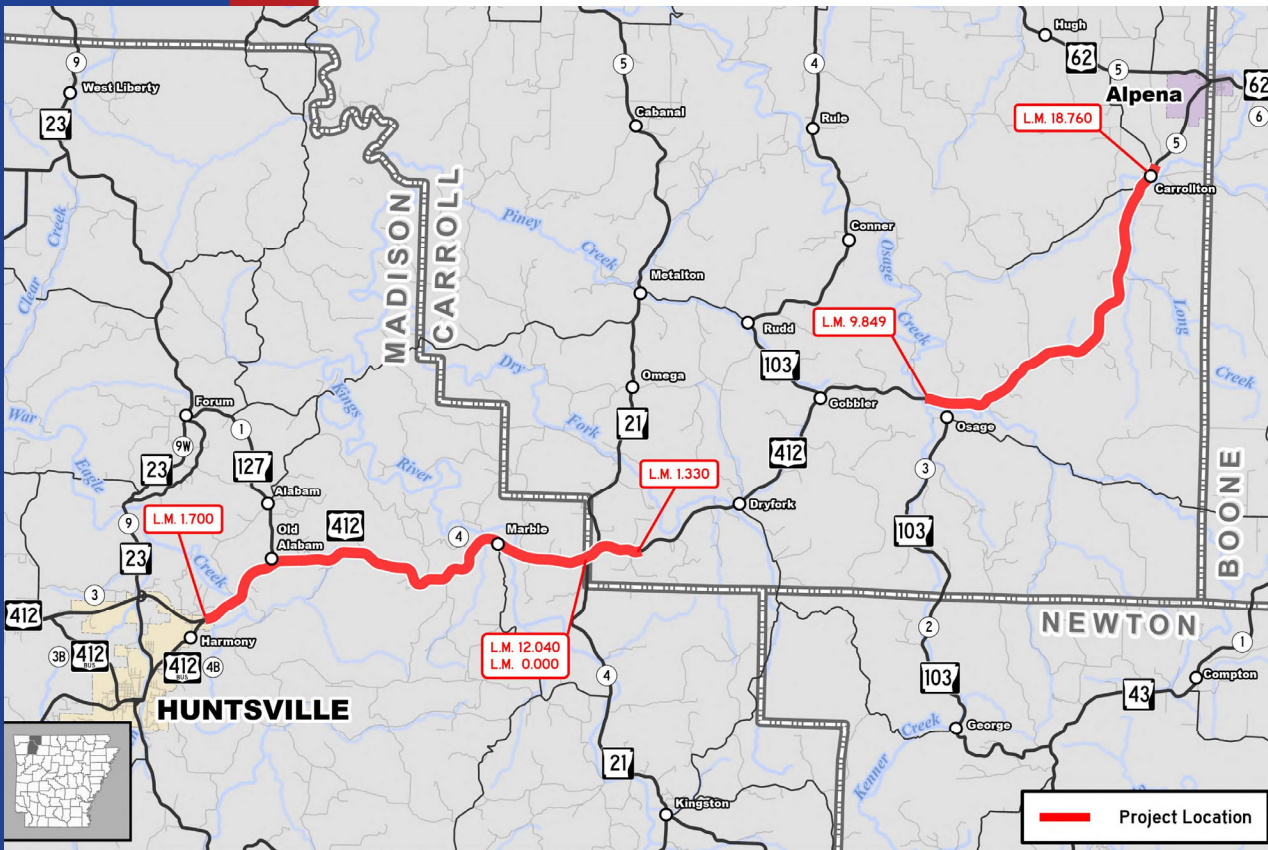












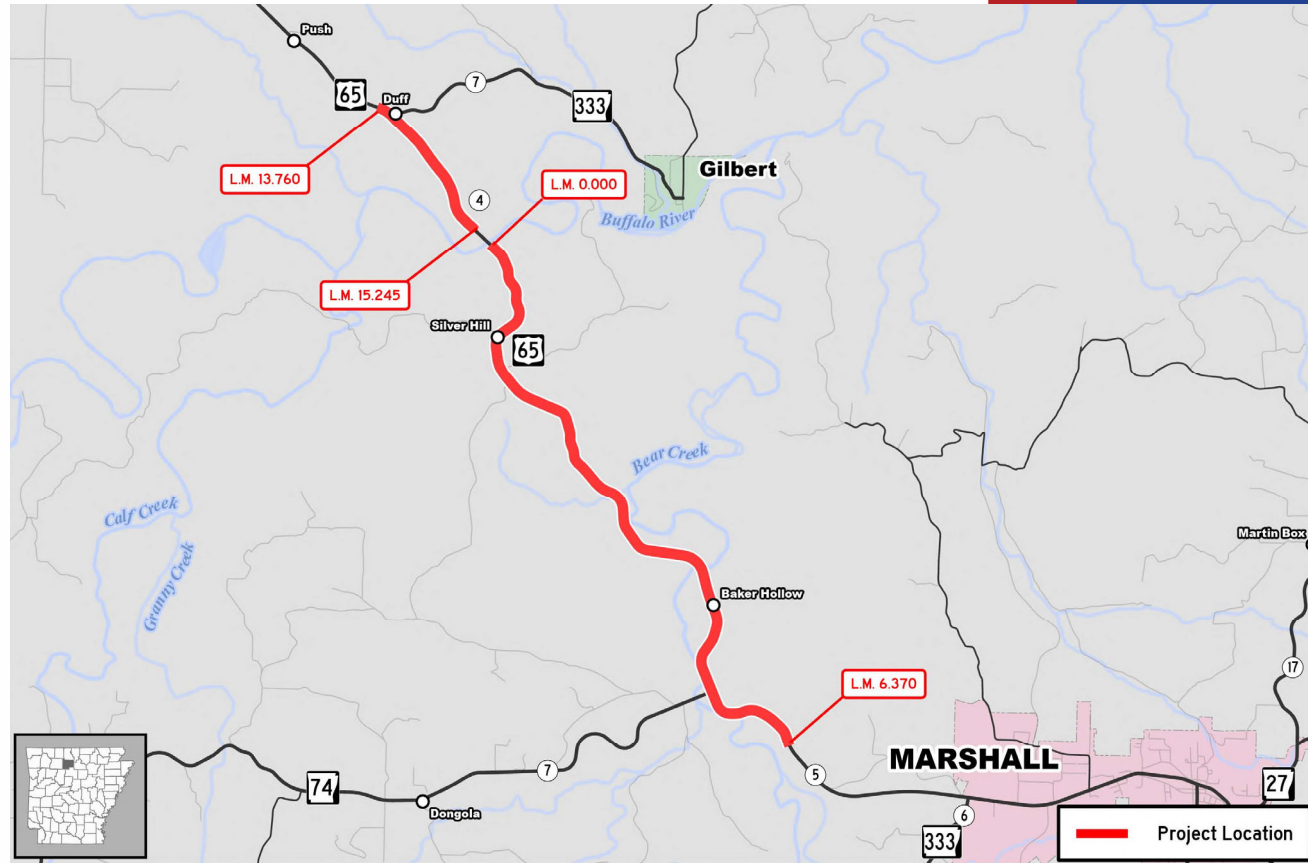
## MADISON & CARROLL CO.

- 2" Overly
- 20 Miles
- Amount: \$7.3 M



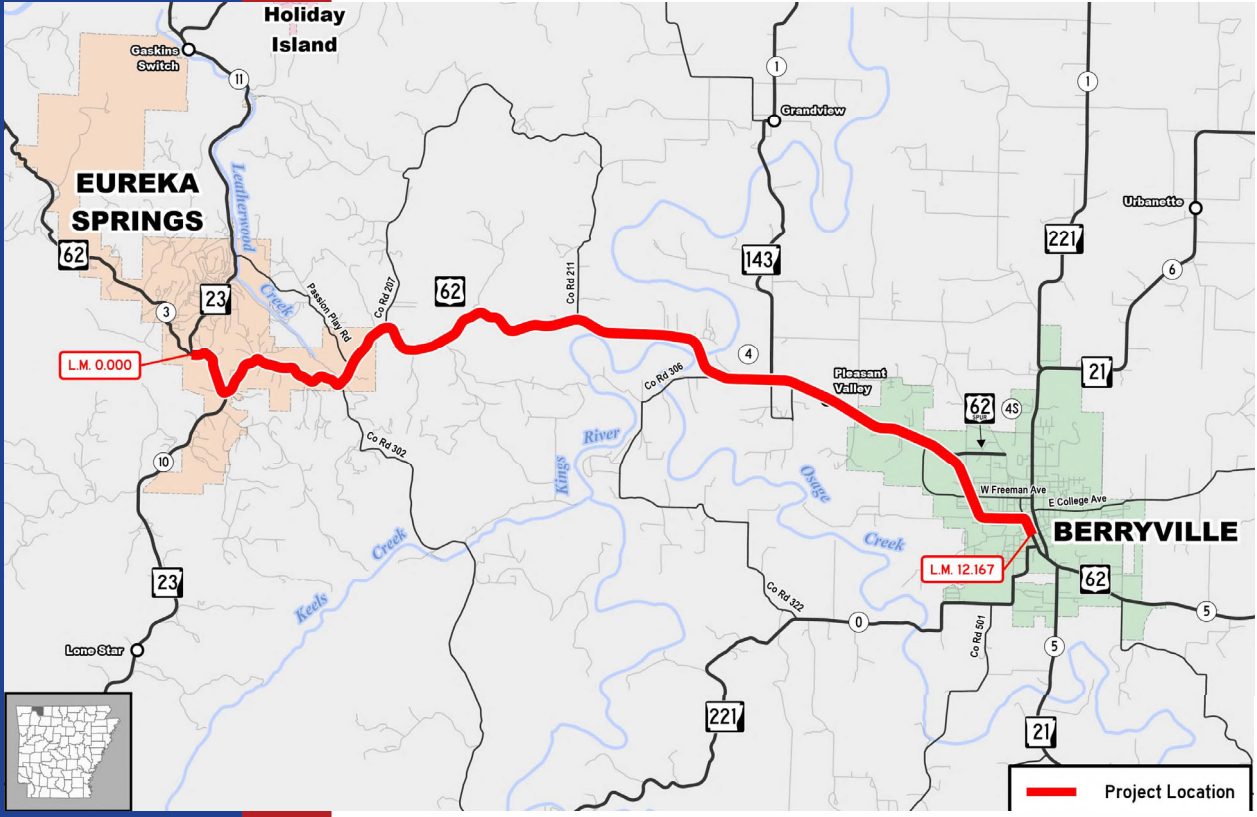
## SEARCY COUNTY

- Mill & 2" Inlay
- 7.625 Miles
- \$2,751,148
- Est Completion Date: 11/26





# UPCOMING PROJECTS



## CARROLL COUNTY

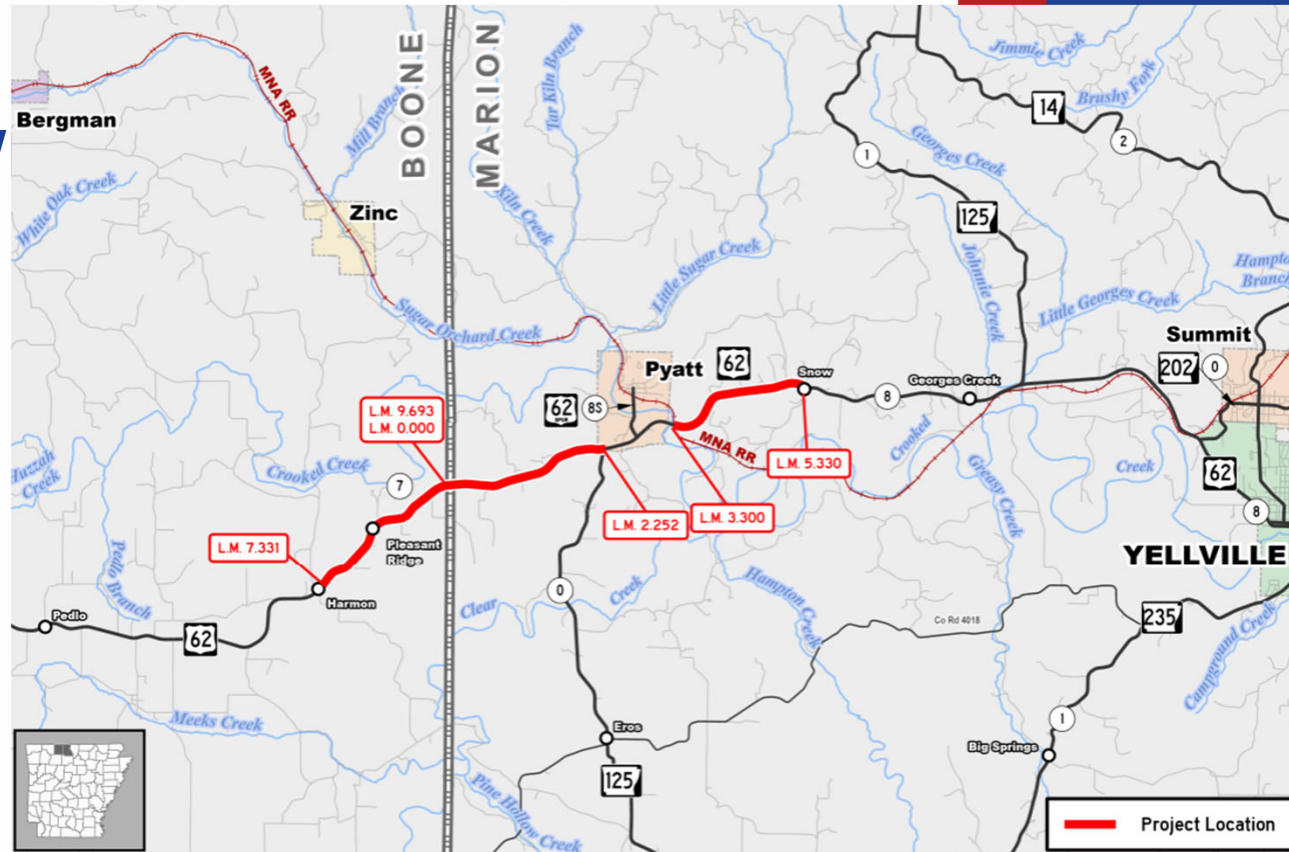
- Mill & Inlay- 3 miles
- 2" Overlay - 9 Miles
- April 2026 Letting

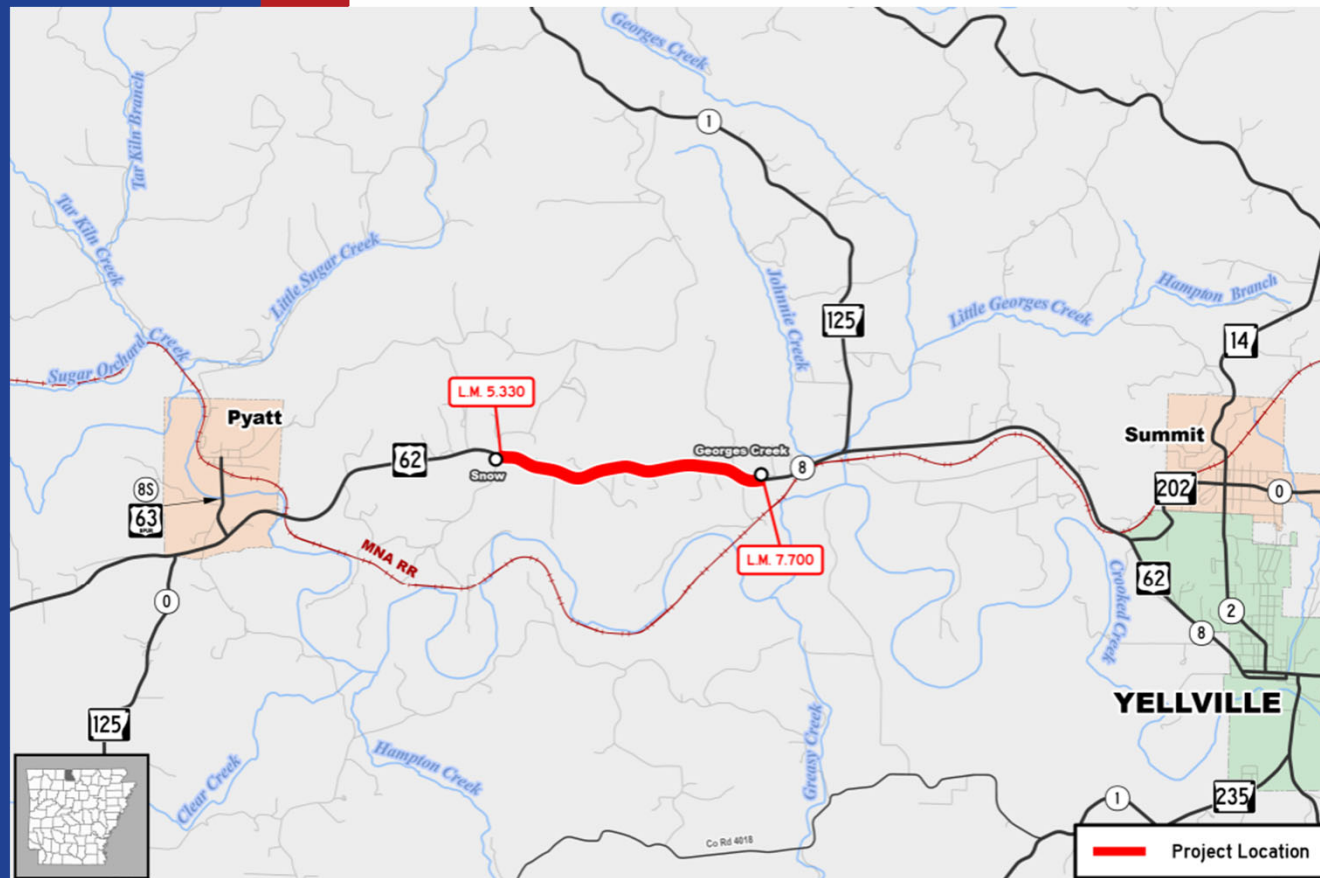


# HIGHWAY 62

## HARMON TO SNOW

- Passing lanes
- Estimated Cost: \$20-30 Million
- 7 Miles
- Shovel Ready: Early 2028





# **HIGHWAY 62** MARION COUNTY

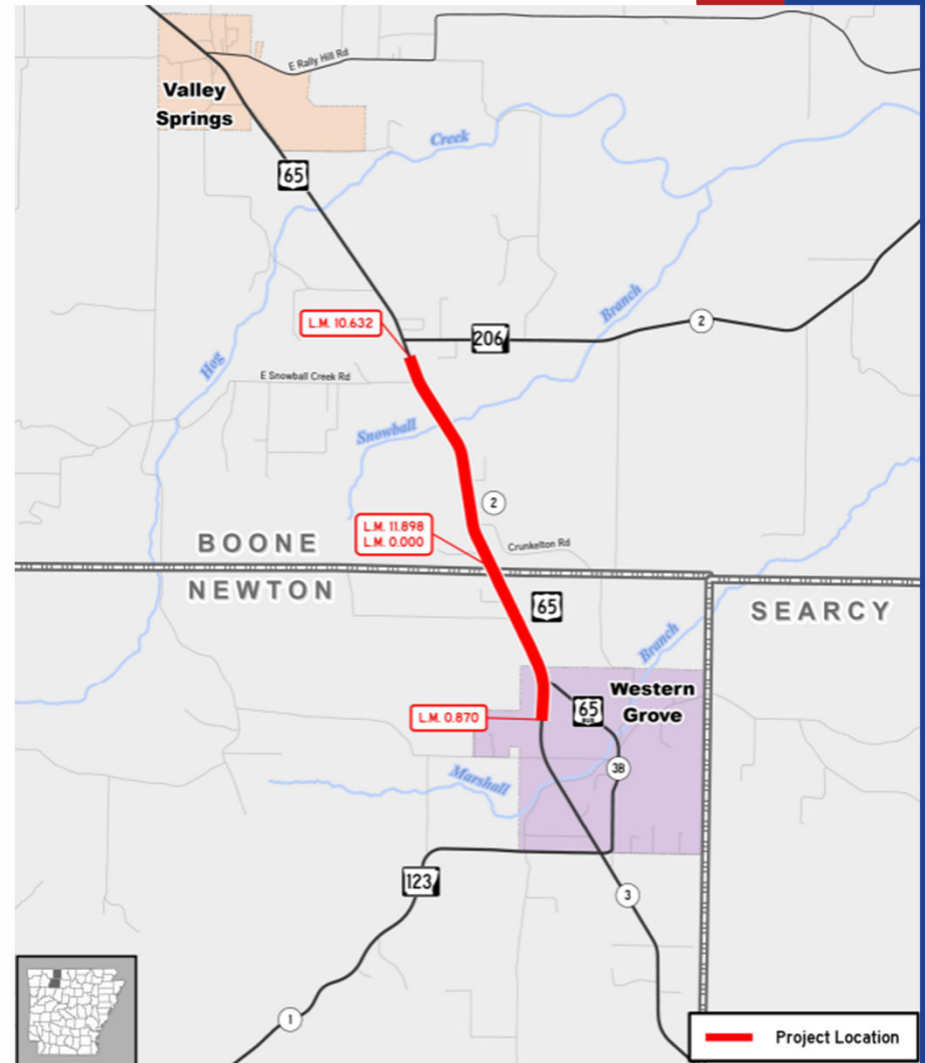
- Alternation Passing Lanes
- 2 Miles
- Estimated Cost: \$5-10 Million
- Shovel Ready: 2029

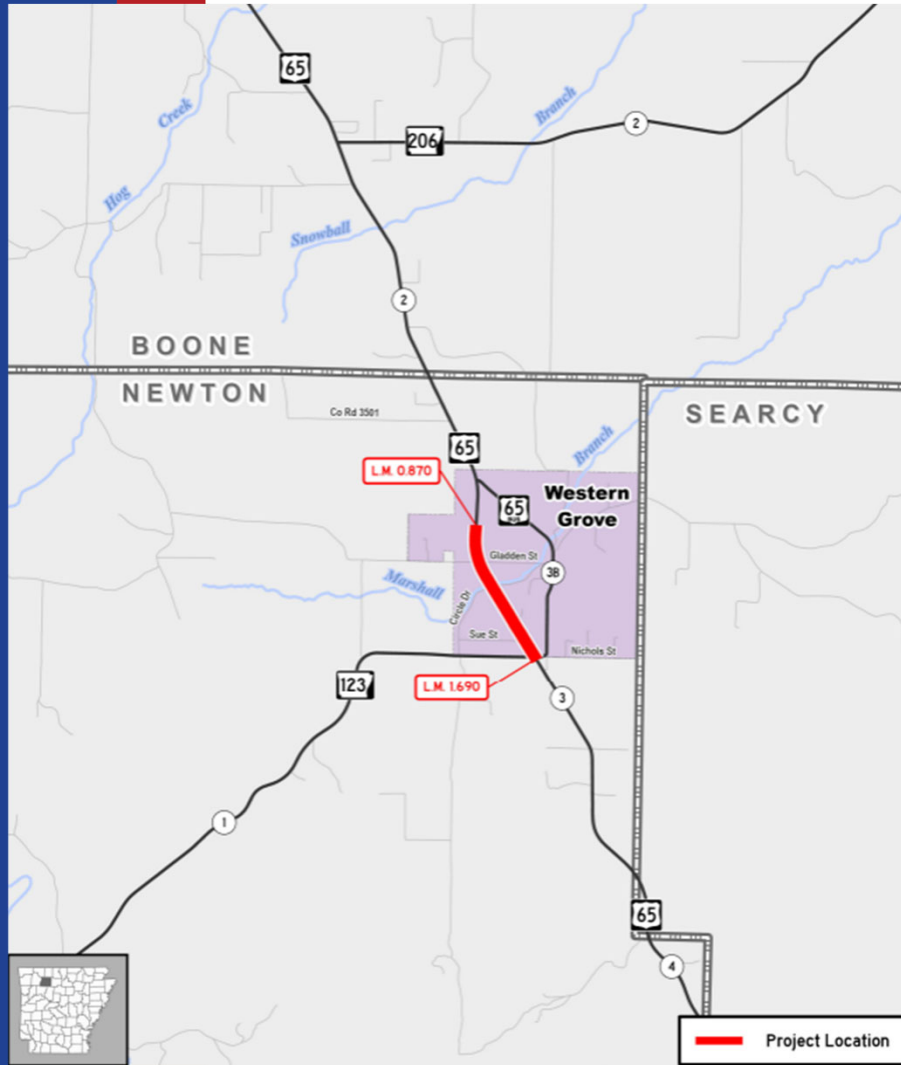


# HIGHWAY 65

## HIGHWAY 206 TO WESTERN GROVE

- Major widening
- 2 Miles
- Estimated Cost: \$30-40 million
- Shovel Ready: Late 2027





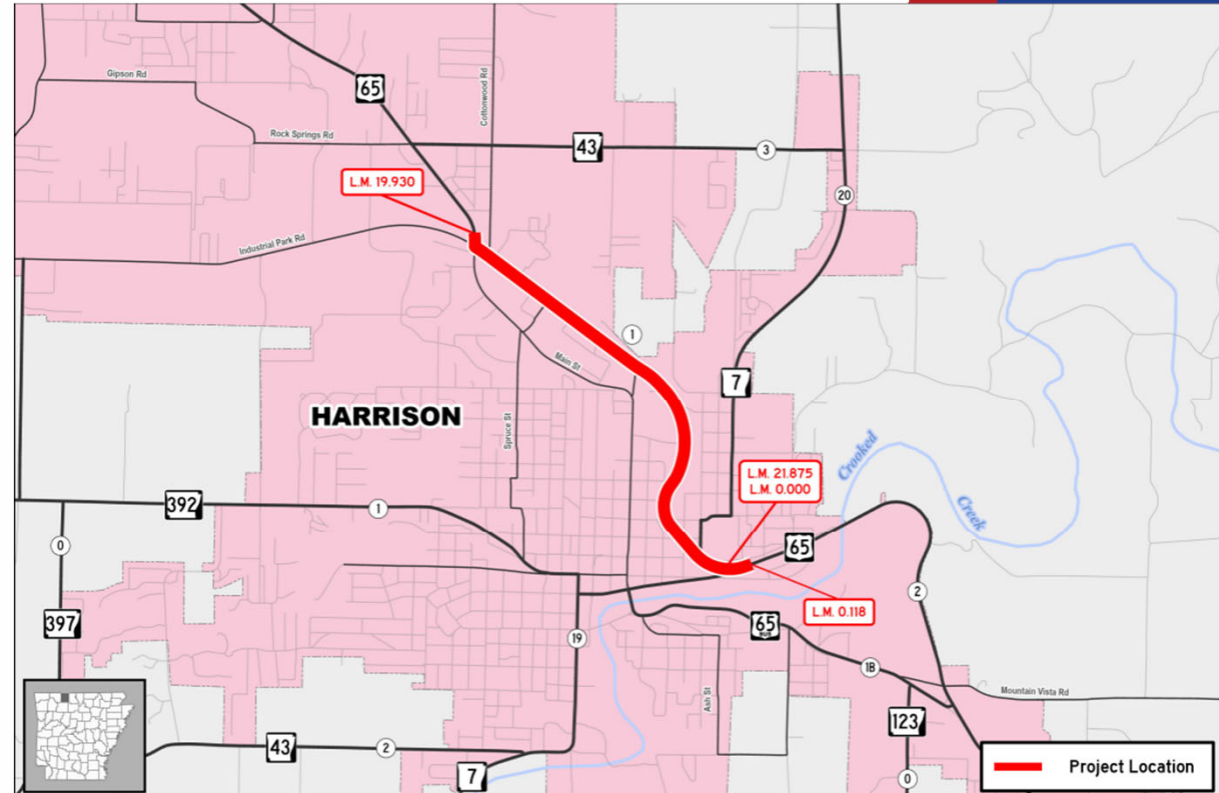
# HIGHWAY 65

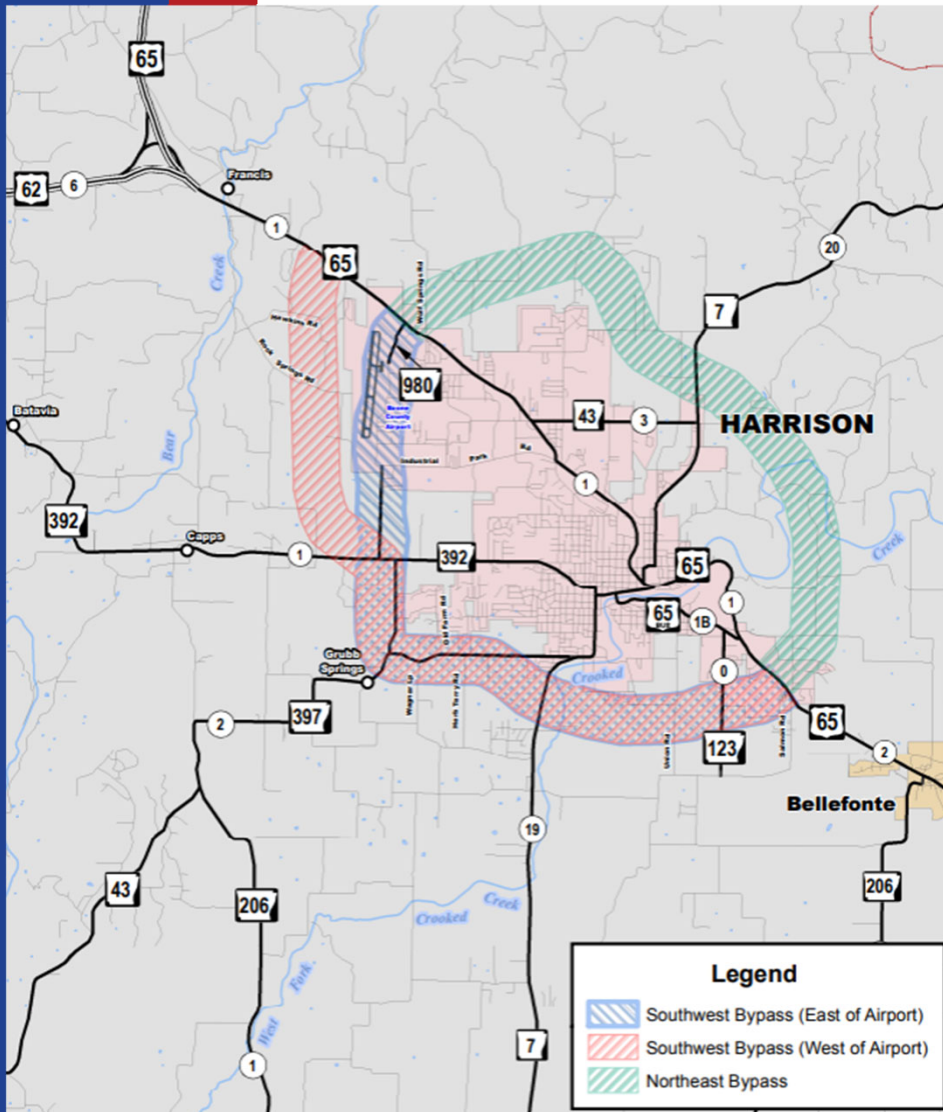
## WESTERN GROVE TO HIGHWAY 123

- Structure & Approaches
- < 1 Mile
- Estimated Cost: \$10-15 Million
- Shovel Ready: 2029

# **HIGHWAY 65** **INDUSTRIAL PARK RD TO HIGHWAY 7**

- Safety improvements
- Intersection Improvements
- 2 Miles
- Estimated Cost: \$15-20 million





# HARRISON BYPASS

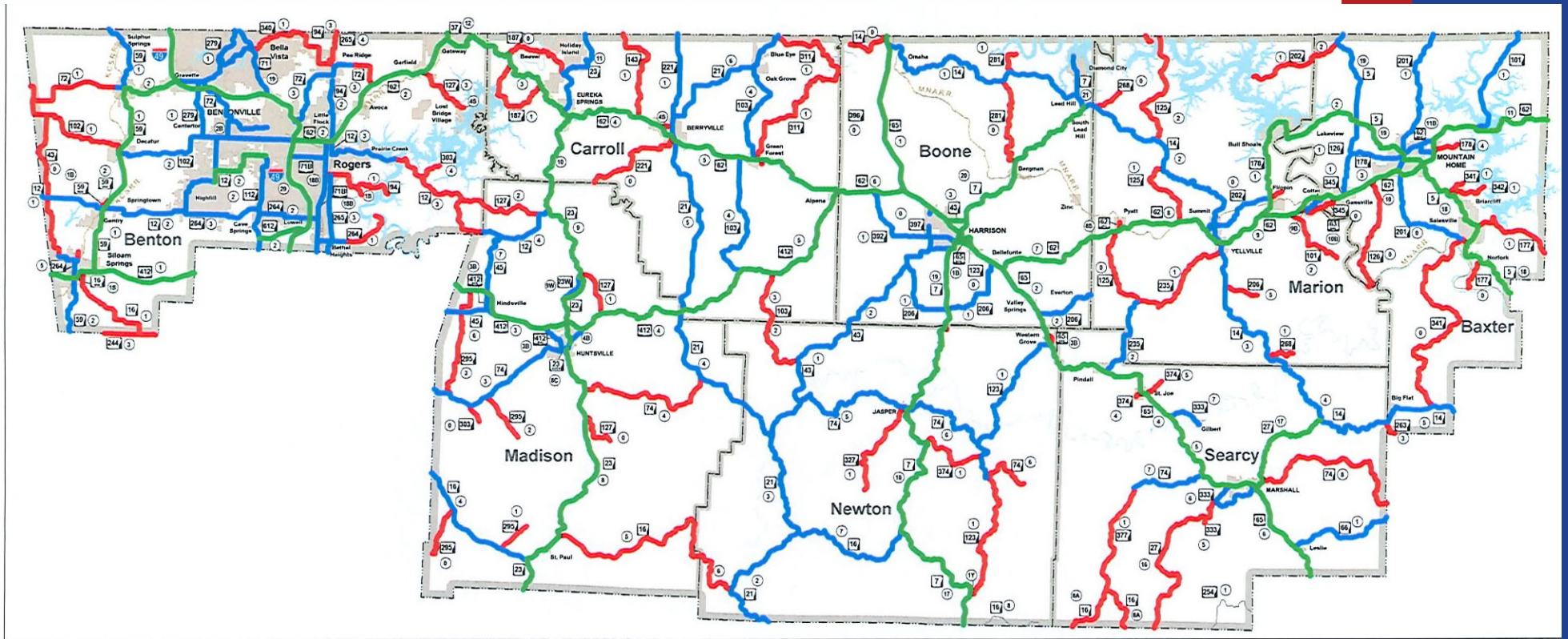
## BOONE COUNTY

- Planning study completed in 2014
- Evaluated Various Potential Routes



# WINTER OPERATIONS AND FERN COSTS





## District 9 Snow Routes By Priority

"A" Routes  
 "B" Routes  
 "C" Routes



"A" Routes  
"B" Routes  
"C" Routes



## Bulk Salt

<b>Location</b>	<b>Capacity (CY)</b>
District HQ's	800
Baxter County HQ's	4500
Garfield HQ's	2500
I-49 Dome	500
Gentry HQ's	2500
Hiwasse	2500
Hwy 612/112	2500
Boone County HQ's	600
Boone County Triangle	2500
Carroll County HQ's	570
Hwy 412/23	2500
Madison County HQ's	400
Marion County HQ's	650
Newton County HQ's	250
Searcy County HQ's	600
<b>TOTAL</b>	<b>23870</b>



# Winter Storm Fern 2026

## \* Snow Storm \*

@WhisperingMoonAmbience



Winte

### Winter Storm Fern Summary

#### Materials

Type	District 9	State Wide
Rock Salt (CUYD)	400	3,692
Treated Salt (CUYD)	4,953	38,370
Brine (GAL)	534,196	3,200,096
Super Brine (GAL)	33,503	485,494
Beet Juice (GAL)	23,188	139,470
Plow Blades (EACH)	91	1,840

#### Equipment Used

	District 9	Quantity
Snowplow Trucks	61	526
Motor Graders	0	113
Salt Spreaders	61	484
Front End Loaders/Backhoes	8	118
Skid Steers	2	37
Slide-in Brine Tanks	22	157
5,000 GAL Brine Tankers	3	31

#### Lane Miles Pretreated and Plowed

	District 9	Quantity
Pretreated	3,818	33,801
Plowed	3,818	38,036

ern 2026

# HARRISON NOON LIONS CLUB

STACY BURGE  
DISTRICT 9 ENGINEER

MARCH 4, 2026

