

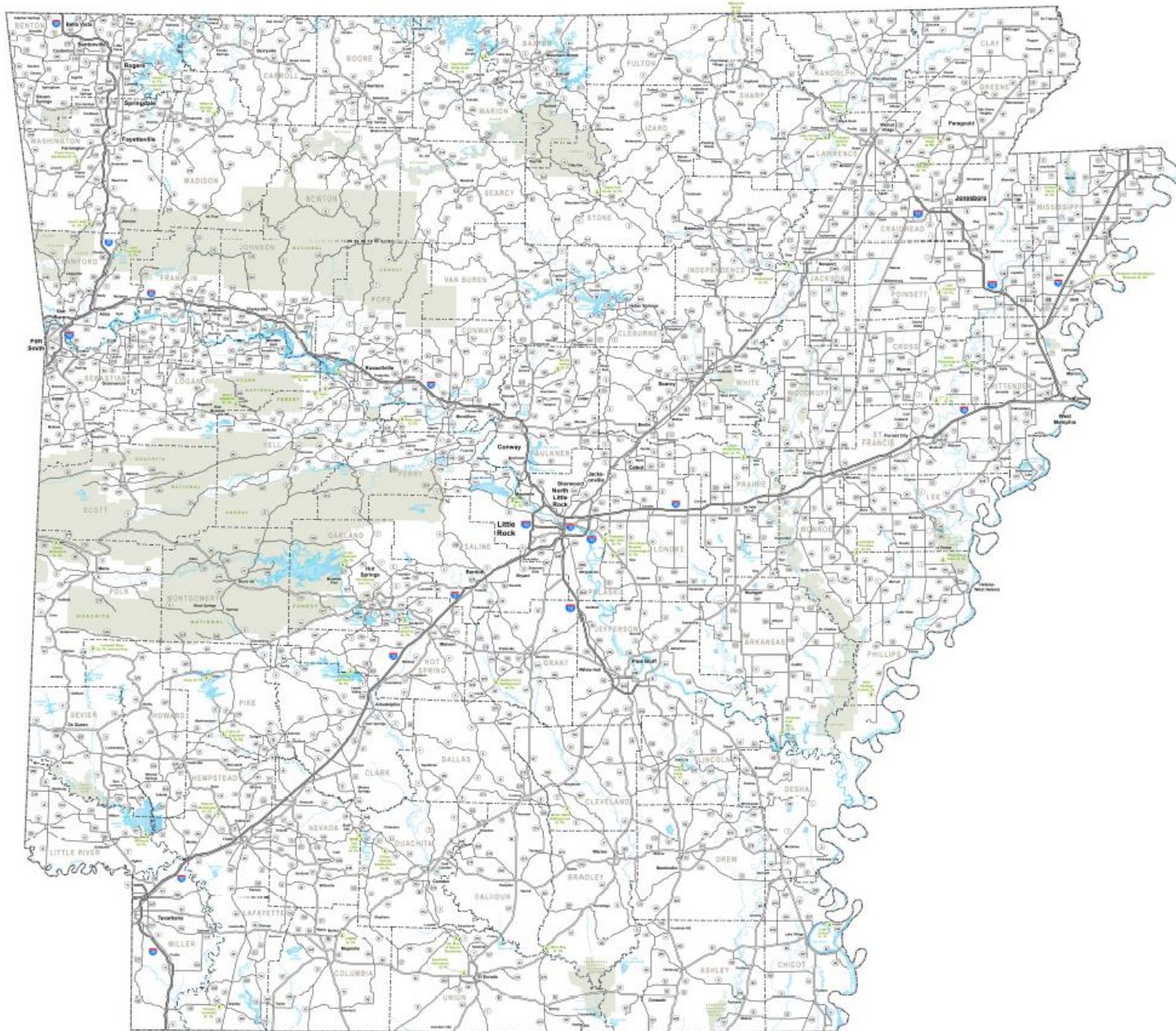


**ARKANSAS
GOOD ROADS
FOUNDATION
2024 FALL POLICY EVENT**

**CHAIRMAN ALEC FARMER
ARKANSAS HIGHWAY COMMISSION**

SEPTEMBER 12, 2024

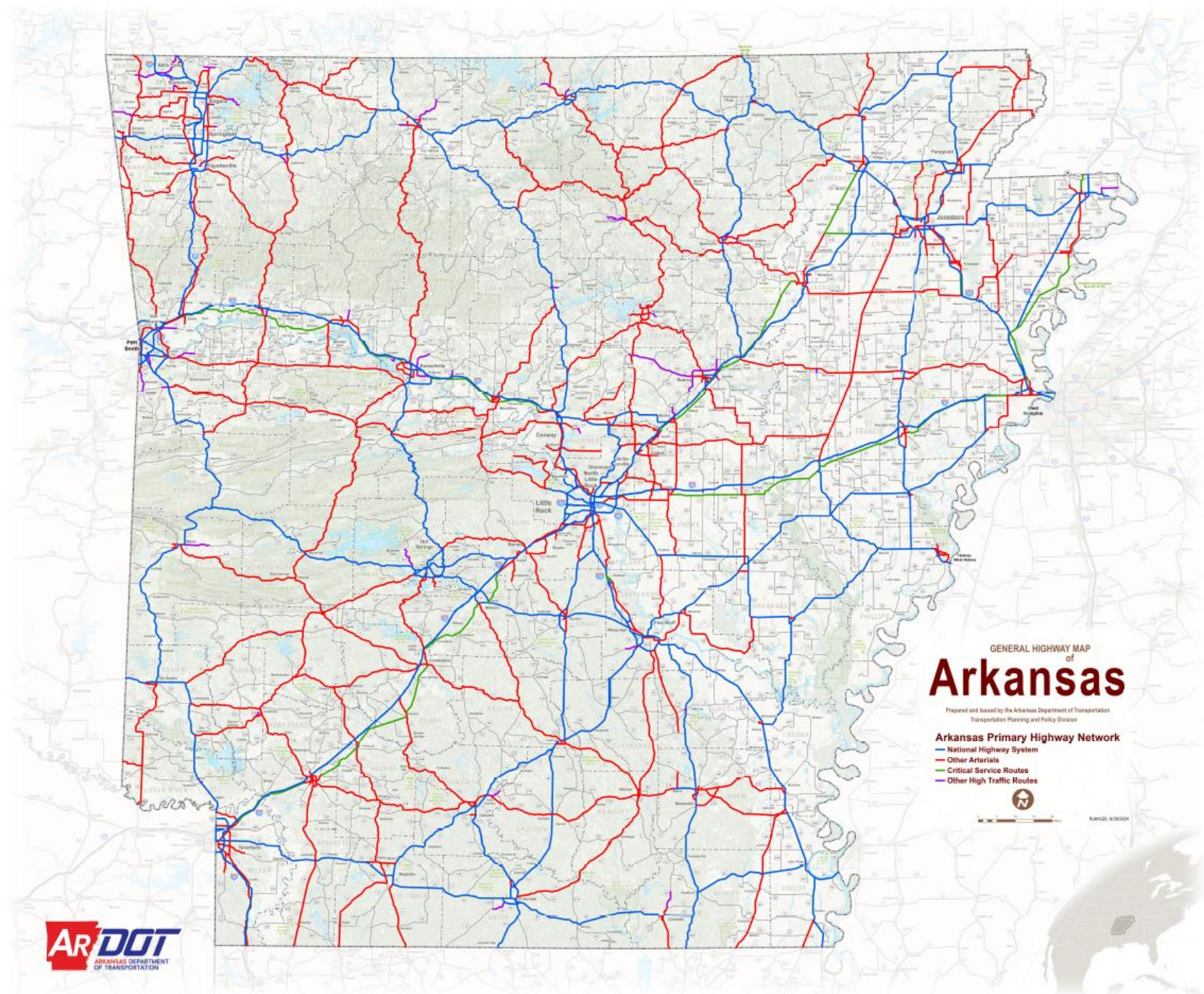




State Highway Map



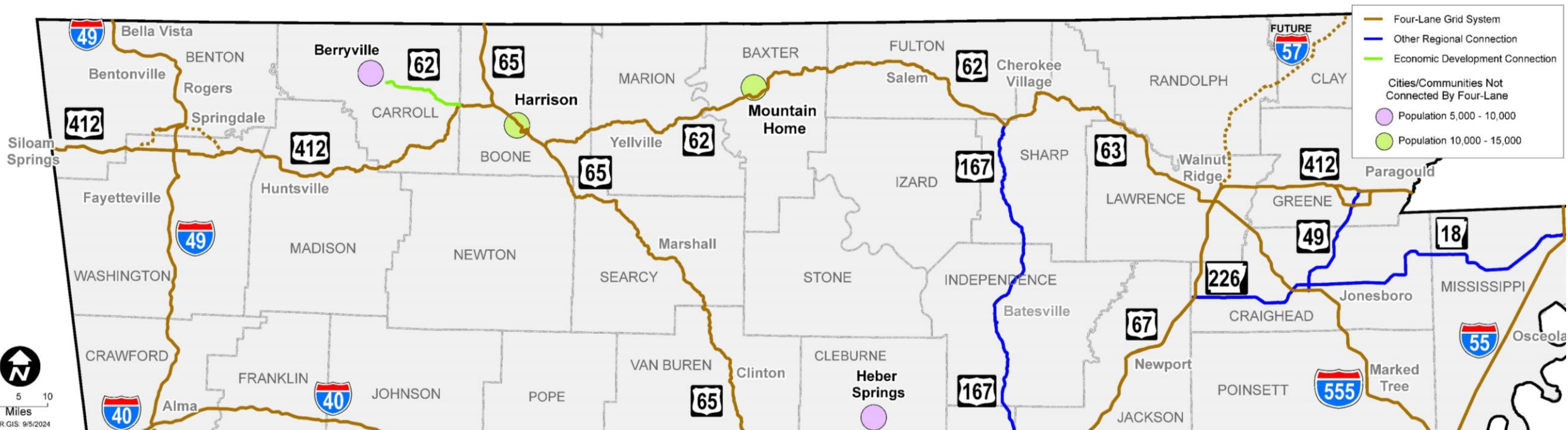
Arkansas Primary Highway Network





Four-Lane Grid System

OKLAHOMA TO MISSOURI





Project Origination & Development



Highway 170 Improvement Study Washington County



Executive Summary



CENTERPOINT PUBLIC SCHOOLS

755 Hwy 8 East
Amity, Arkansas 71921
Phone: 870-356-2912 Fax: 870-356-4637
www.coknights.us

To: Steve Frisbee
District Engineer
AHTD District 3

This is a follow up to our correspondence related to the requested left turn lane on highway 8 East at the entrance of the new Centerpoint K-5 campus.

Since our last communication I have reexamined the project budget and adjusted the district's operating funds in such a way that I am now in a position to propose to the Centerpoint Board of Education that we amend the budget to include expenditures up to \$50,000 toward the construction of the proposed turning lane.

I understand that funding is tight for all public service agencies- including funds for highways and schools. It is my hope that this commitment and contribution of the district toward this important state highway safety project demonstrates our desire to partner with the state highway department to help make the roads in our area safer for the approx 1,000 children, 140 staff members, and the countless parents and patrons of our district who will navigate this section of road each day.

In this spirit, I am again requesting that the Arkansas State Highway Department partner with the Centerpoint School District in planning, approval, and construction of the left turning lane to our new K-5 elementary campus at Rosboro.

Please let me know if further information is needed to expedite this request.

Thank you for your consideration,

John Breshers
Superintendent
501-672-8909

WILLIAM B. BENTON
733 Shore Rd.
Heber Springs, AR 72543

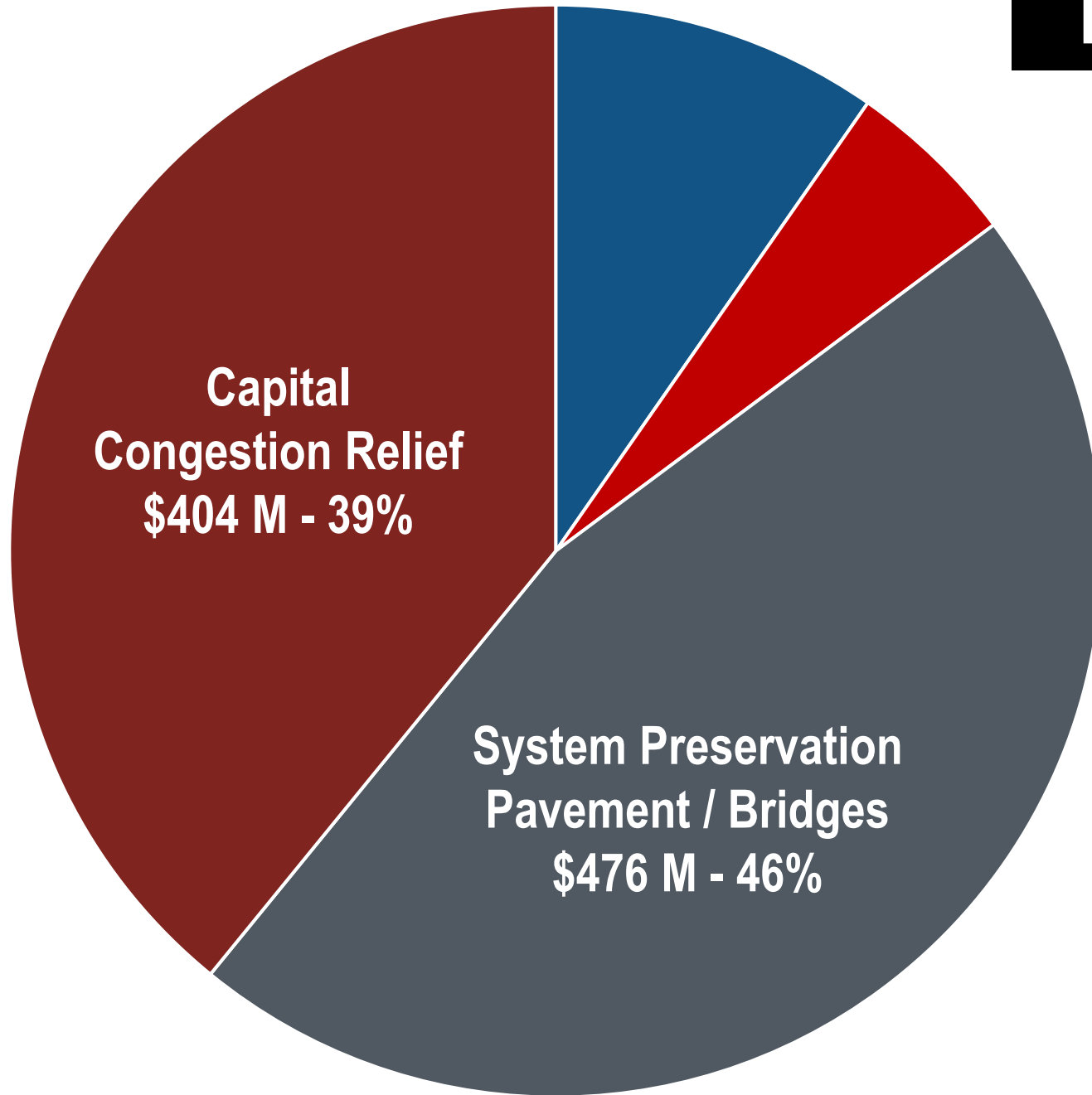
8/24/15

Alex,
Enclosed are pictures of Hwy. 110 entrance to Eden Isle. Recent surfacing from maintenance budget from Batesville stopped on Corp. of Engineer part as shown on photo.

Lyndal Whits and Bruce Street of 870 2512374 870 3015229 Ark. Hwy. Dept. - Batesville are very familiar with this project.

The residents of Eden Isle and the Red Apple Resort very much support the

**Construction Funding Distribution
Average for Federal Fiscal Years 2027-2028**



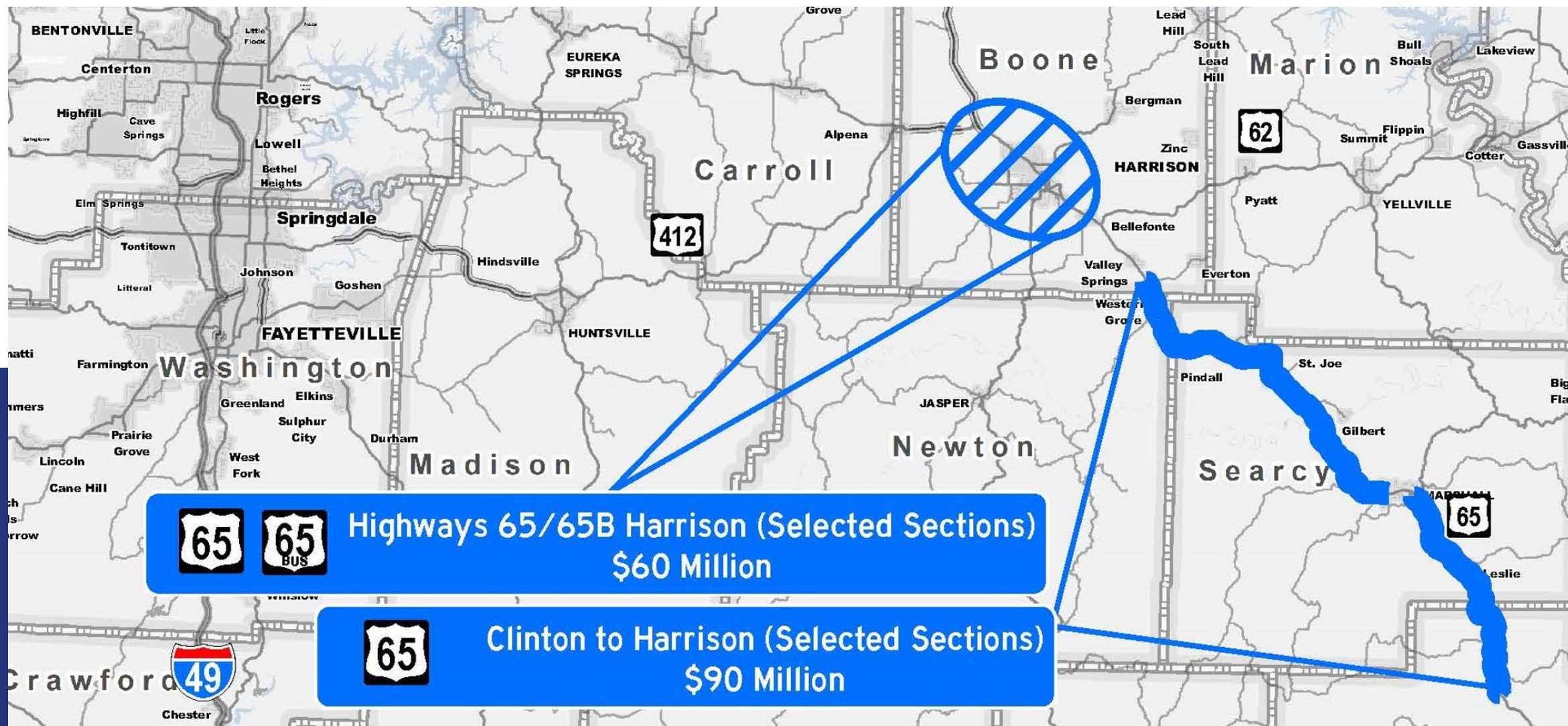
Total = \$1,033 Million

Interstate
\$100 M - 10%

Safety
\$53 M - 5%

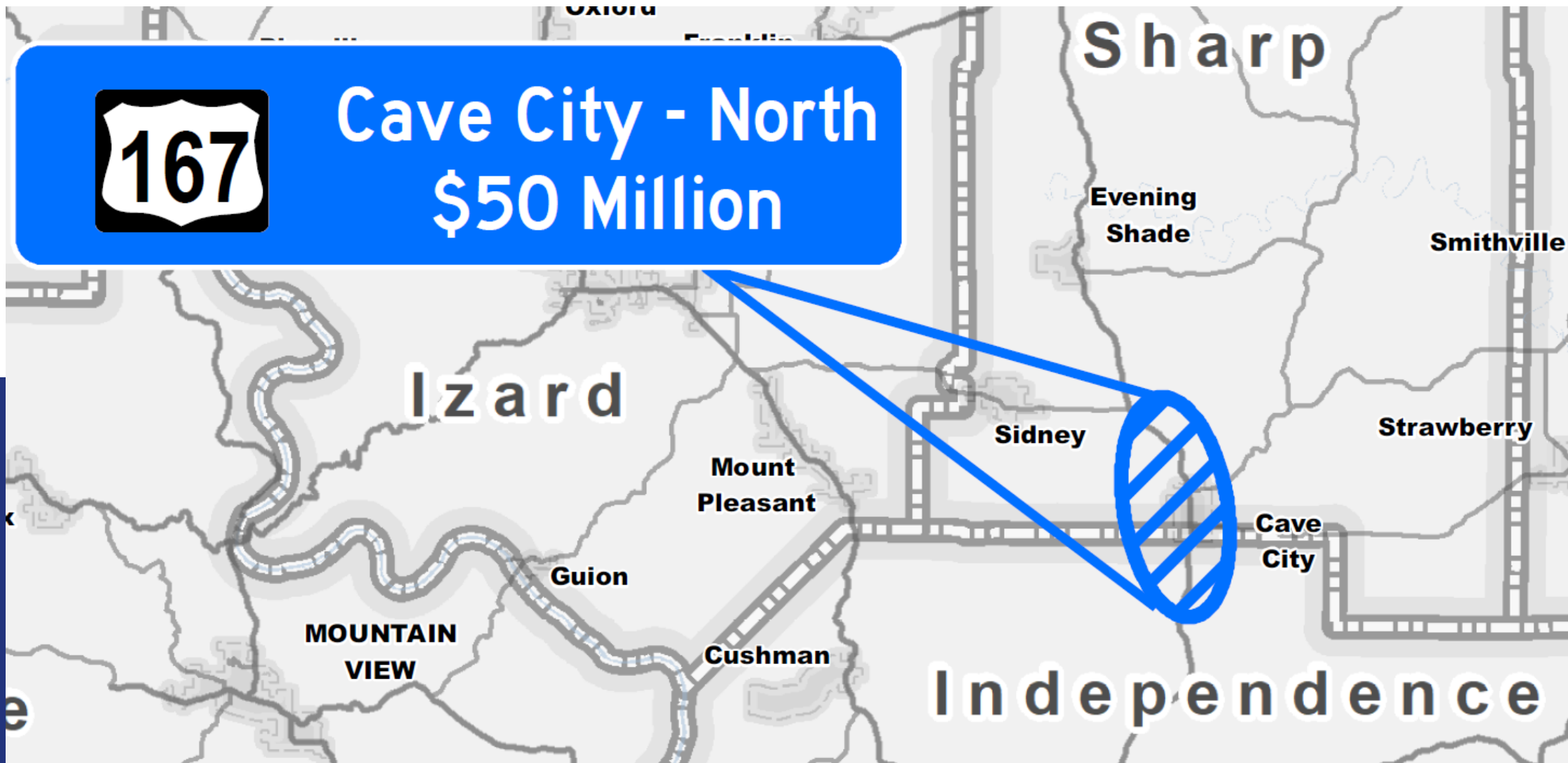
Statewide Transportation Improvement Program

HIGHWAY 65

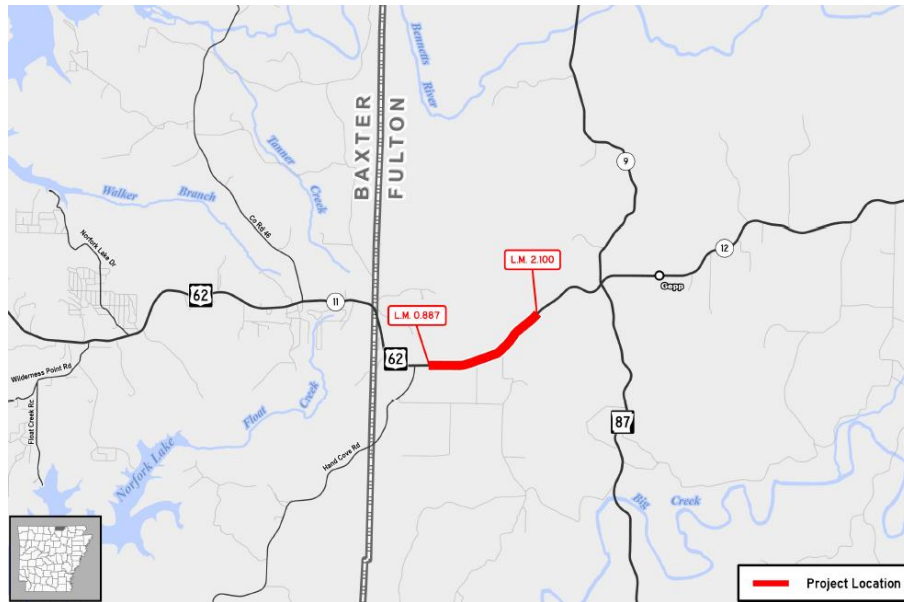
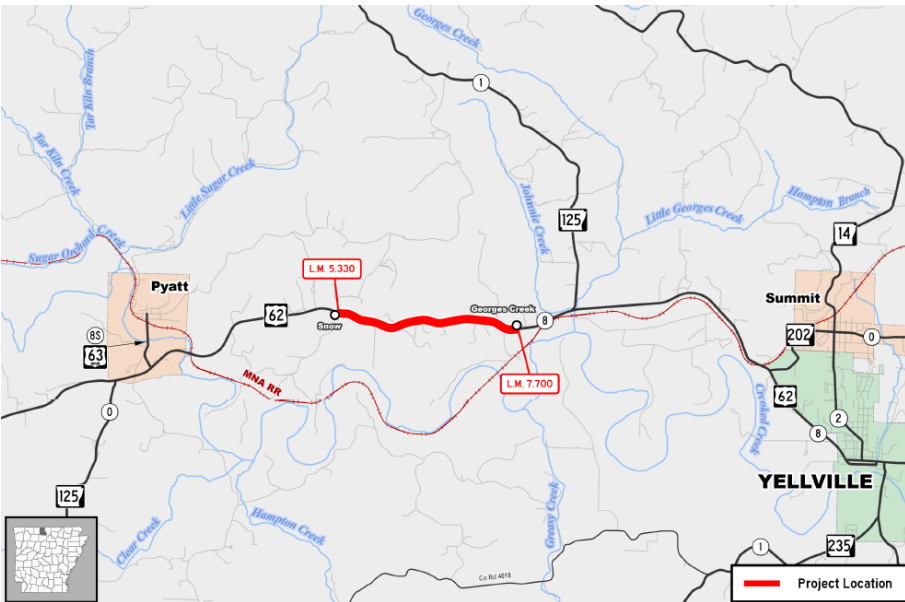
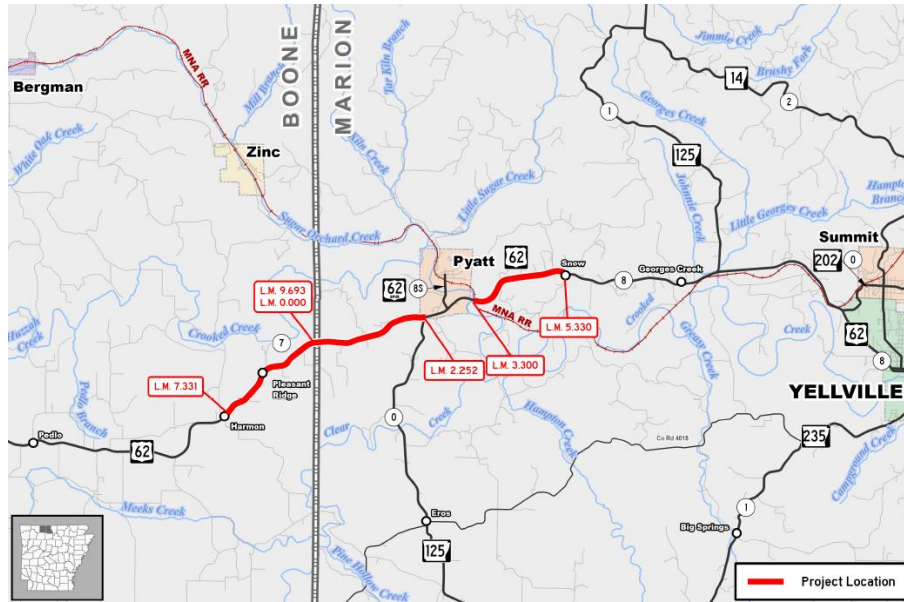
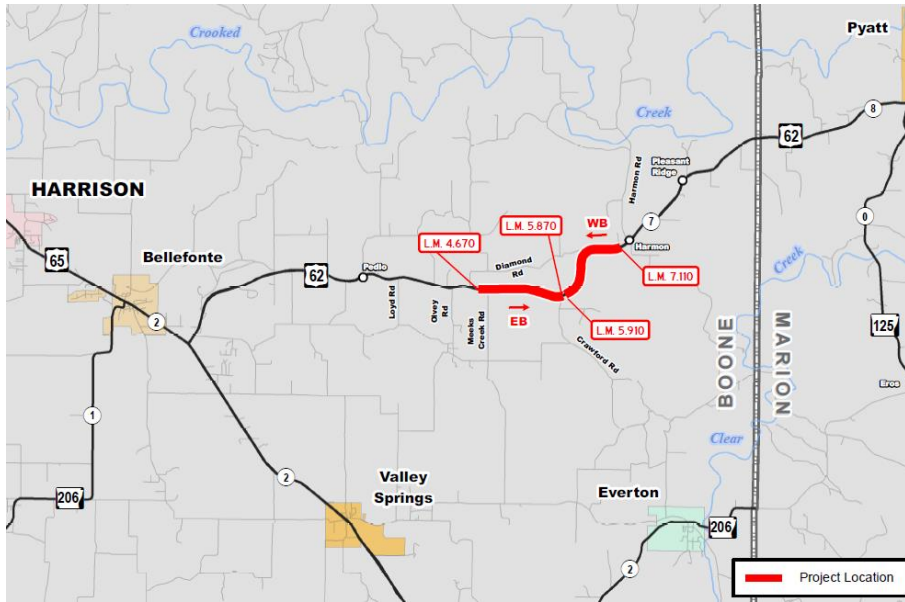


Statewide Transportation Improvement Program

HIGHWAY 167



PASSING LANE
2 MILES



STIP-Funded Passing Lanes



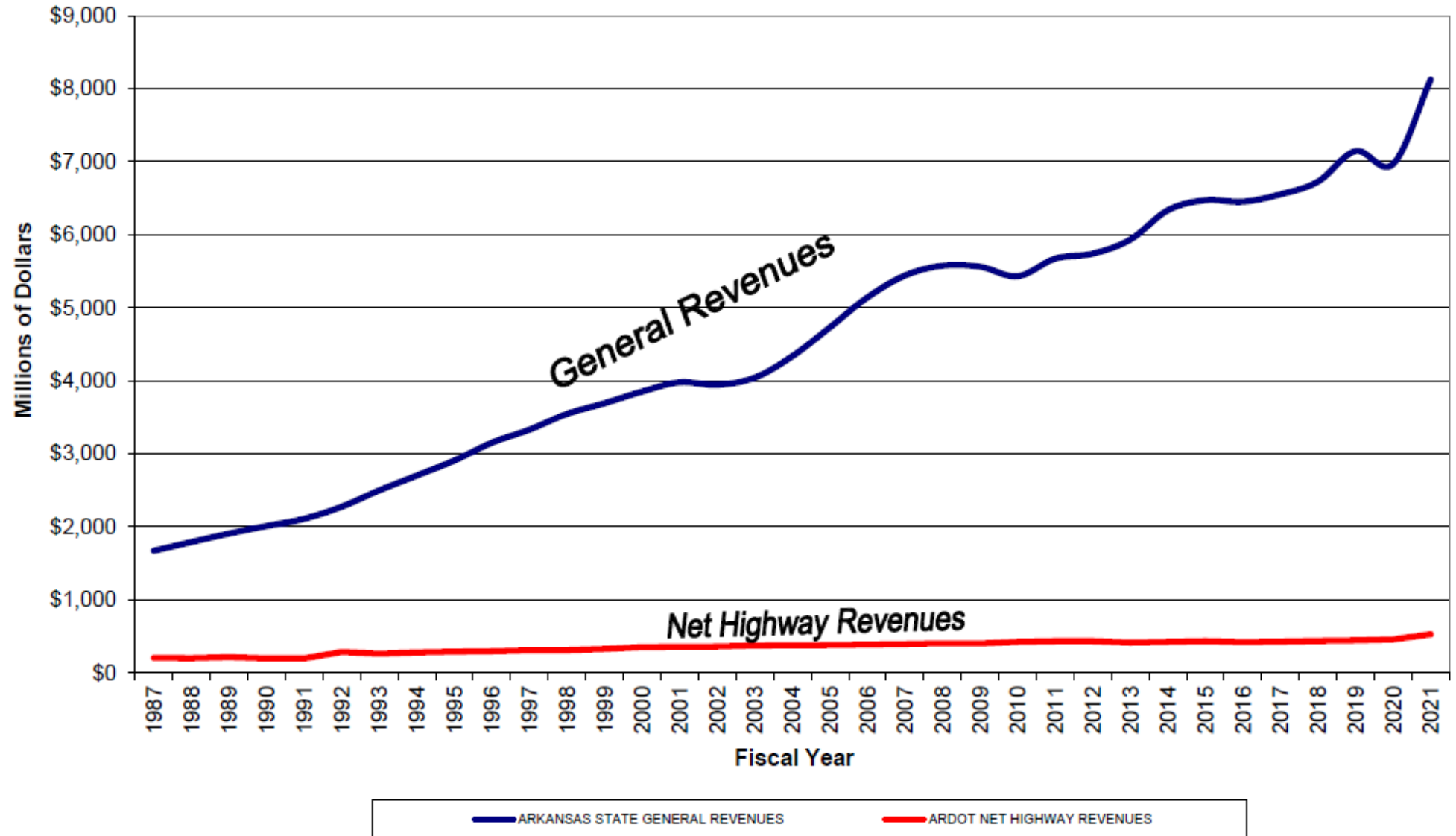
Number of Lanes & Mileage

— (Black)	2 Lanes (117.171 Miles)
— (Yellow)	3 Lanes (36.741 Miles)
— (Green)	4 Lanes (48.196 Miles)
— (Blue)	5 Lanes (88.944 Miles)
— (Purple)	6 Lanes (1.610 Miles)
Total:	292.662 Miles



Highway 412 Corridor				Highway 82 Corridor			
Range	# Projects	Length (mi)	Amount (x1 M)	Range	# Projects	Length (mi)	Amount (x1 M)
1990-2000	61	280	174	1990-2000	60	133	46
2000-2010	64	456	229	2000-2010	44	128	189
2010-2020	51	315	361	2010-2020	18	93	114
2020-2028	60	231	524	2020-2028	26	145	378
Renew AR Hwys.	8	55	340	Renew AR Hwys.	4	17	160
Total	244	1,337	1,629	Total	152	516	886

Arkansas State General Revenues vs ARDOT Net Highway Revenues



Excludes County & City aid funds



**ARKANSAS
GOOD ROADS
FOUNDATION
2024 FALL POLICY EVENT**

**CHAIRMAN ALEC FARMER
ARKANSAS HIGHWAY COMMISSION**

SEPTEMBER 12, 2024

