



**FRONTIER METROPOLITAN  
PLANNING ORGANIZATION**

TECHNICAL COMMITTEE & POLICY BOARD MEETING

**VICE CHAIRMAN KEITH GIBSON**





ARKANSAS HIGHWAY COMMISSION

NOVEMBER 20, 2025

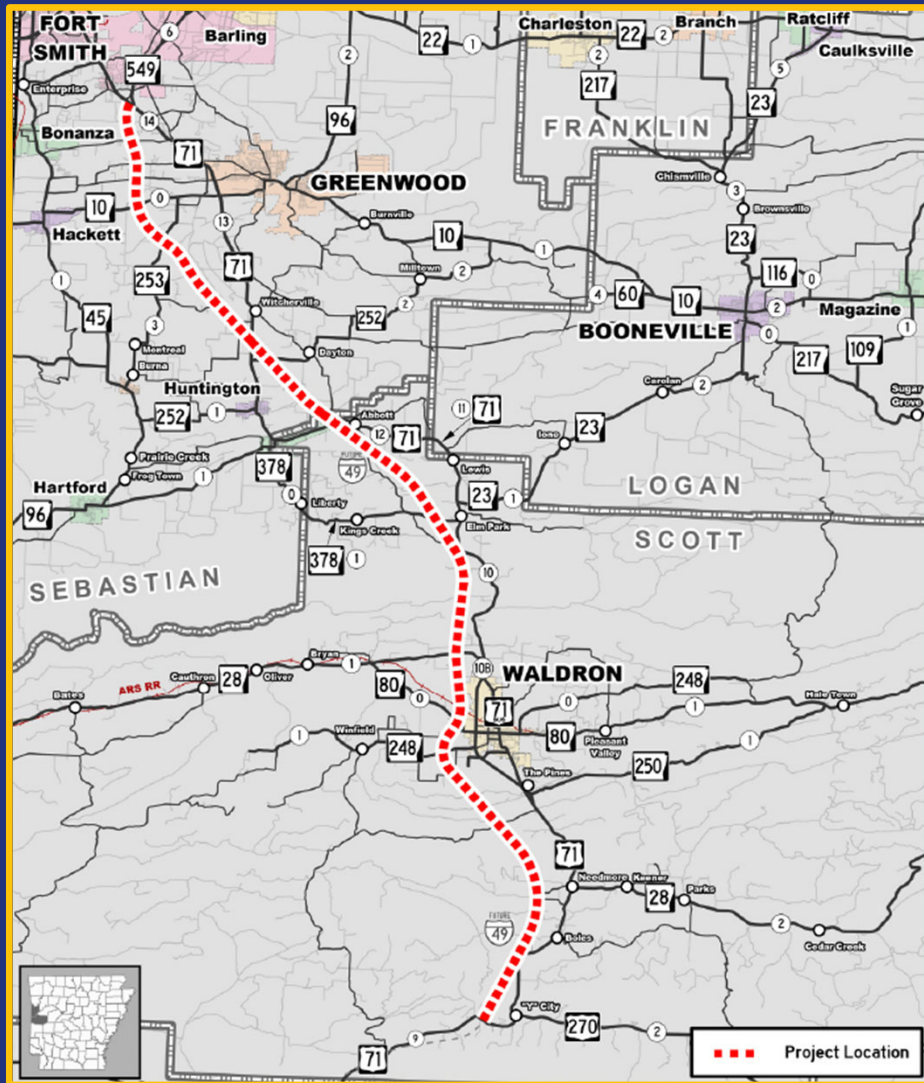




# PRELIMINARY CONSTRUCTION PHASES

Segment	Major Work Scope Items
 Phase 1	<b>River Bridge and Approach Grading/Paving</b> (Highway 22 to Gun Club Road)
 Phase 2	<b>Grading and Six Structures and Approaches</b> (Clear Creek Road to I-40)
 Phase 3	<b>Grading, Paving, Grade Separations and Cross Drainage Structures</b> (Gun Club Road to Clear Creek Road)
 Phase 4	<b>Base, Surfacing, and Six Structures and Approaches</b> (Clear Creek Road to I-40)



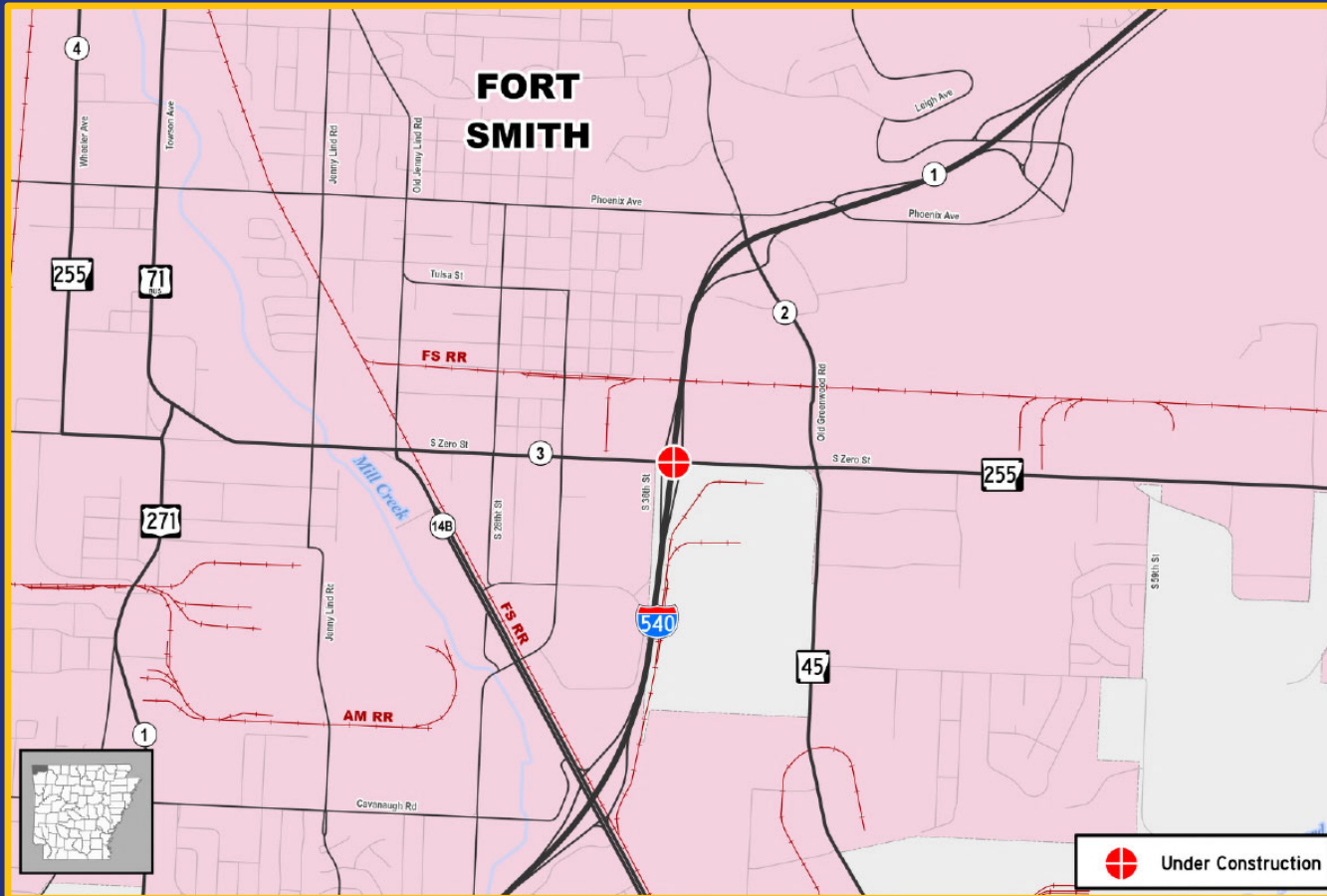


# INTERSTATE 49

## BARLING TO "Y" CITY



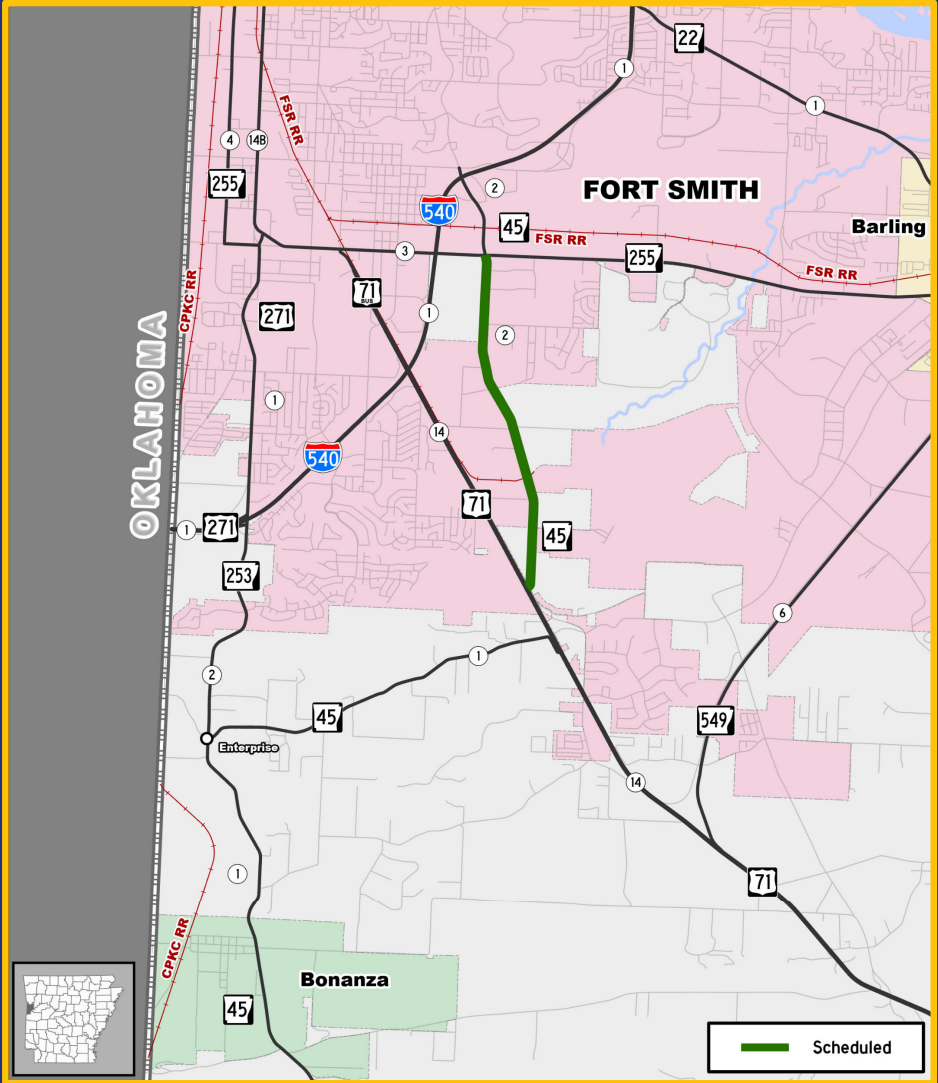
# INTERSTATE 540/HIGHWAY 255 SEBASTIAN COUNTY





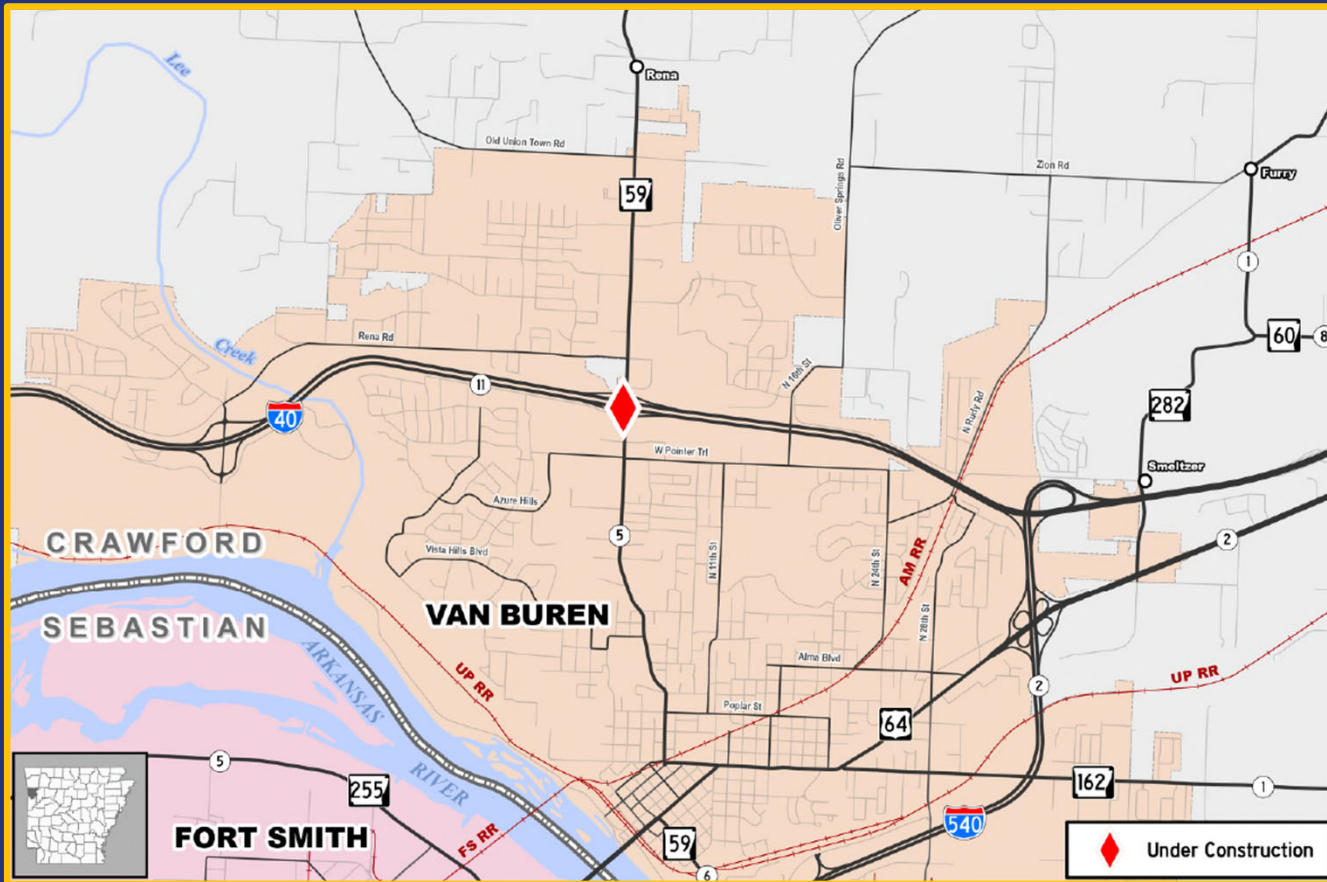
# HIGHWAY 45

## SEBASTIAN COUNTY





# INTERSTATE 40/HIGHWAY 59 CRAWFORD COUNTY

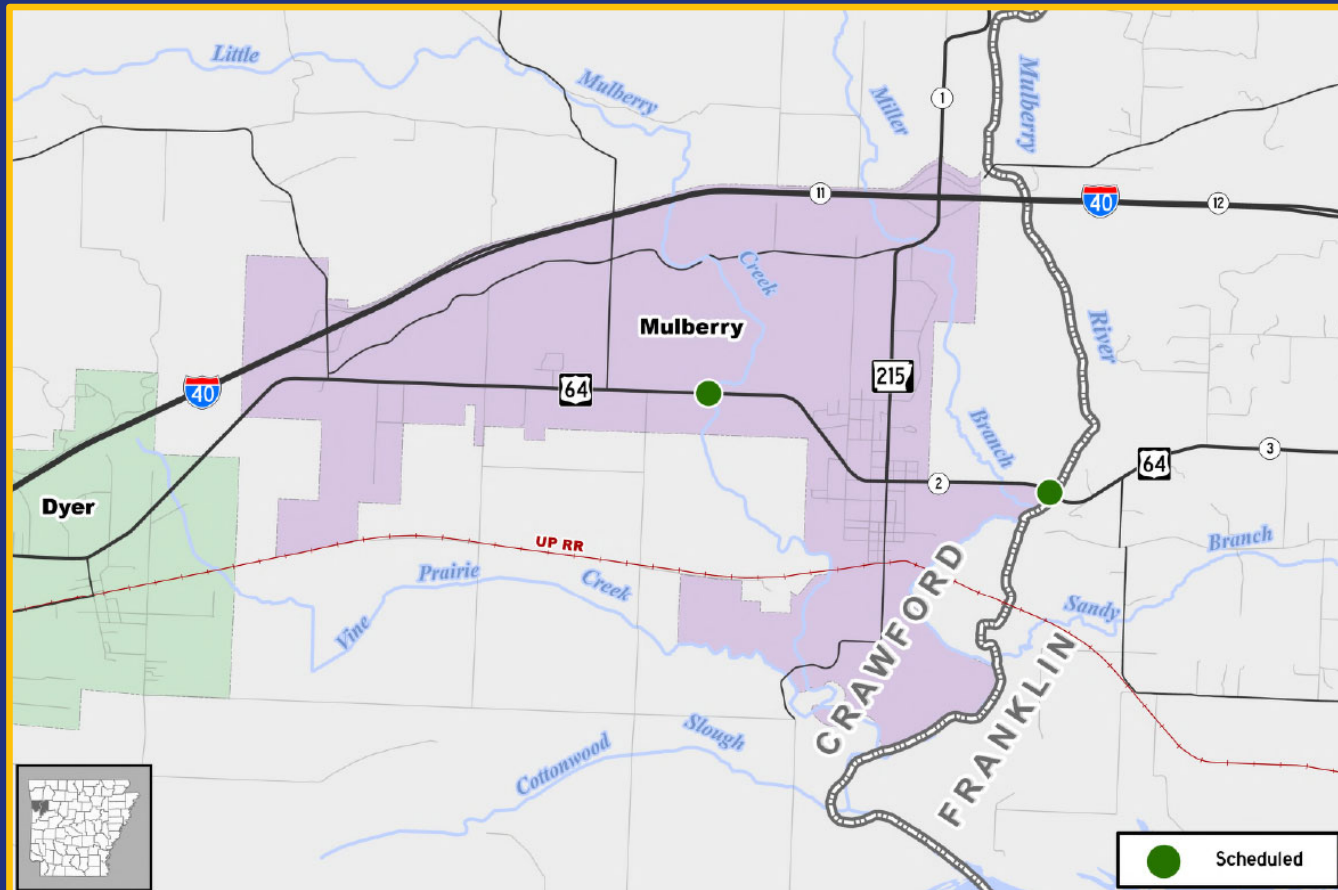






# HIGHWAY 64

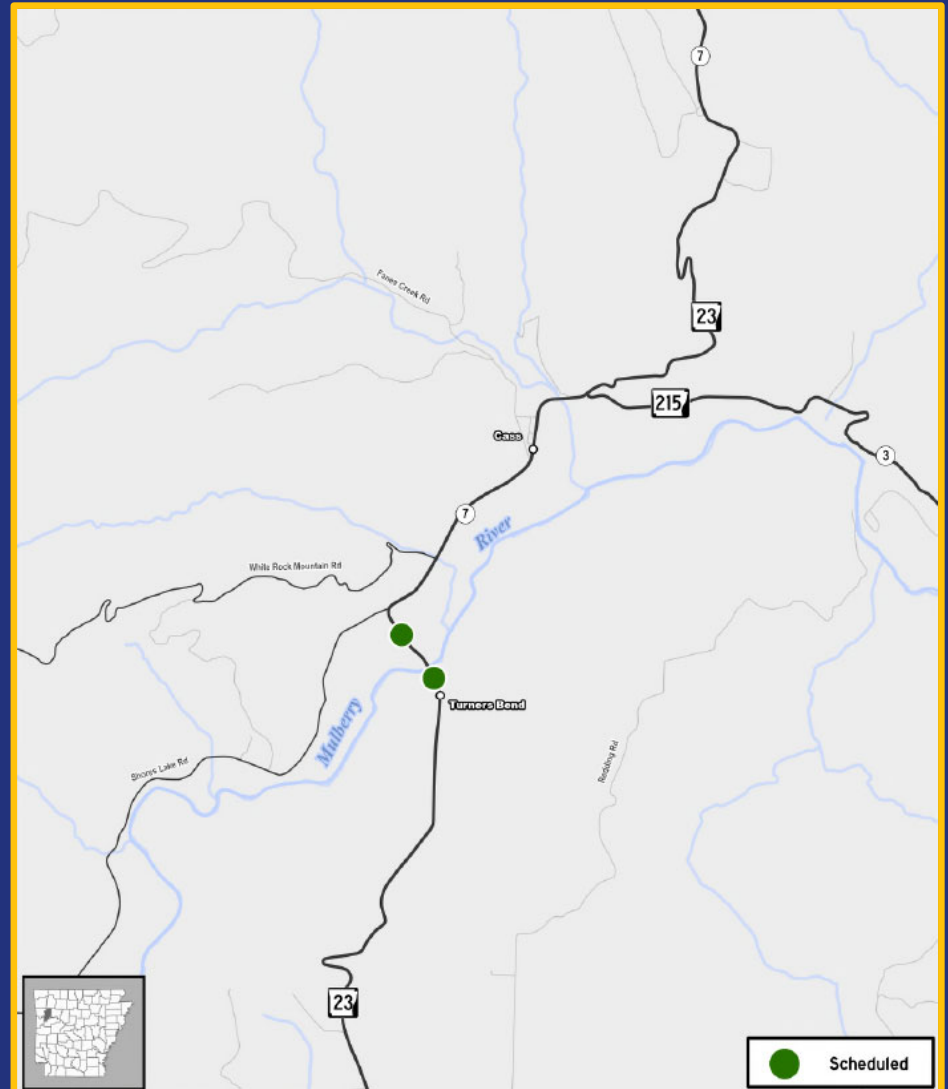
## CRAWFORD & FRANKLIN COUNTIES





# HIGHWAY 23

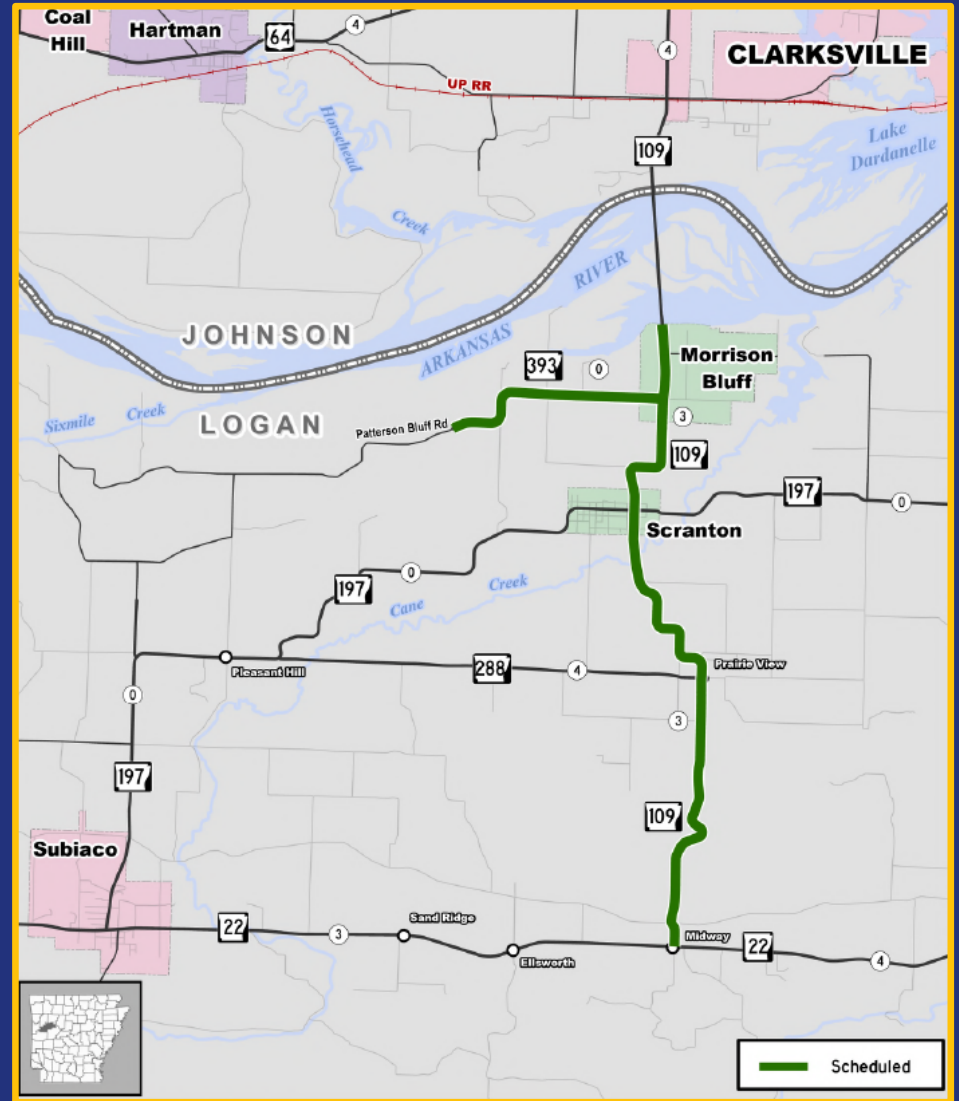
## FRANKLIN COUNTY





# HIGHWAYS 109 & 393

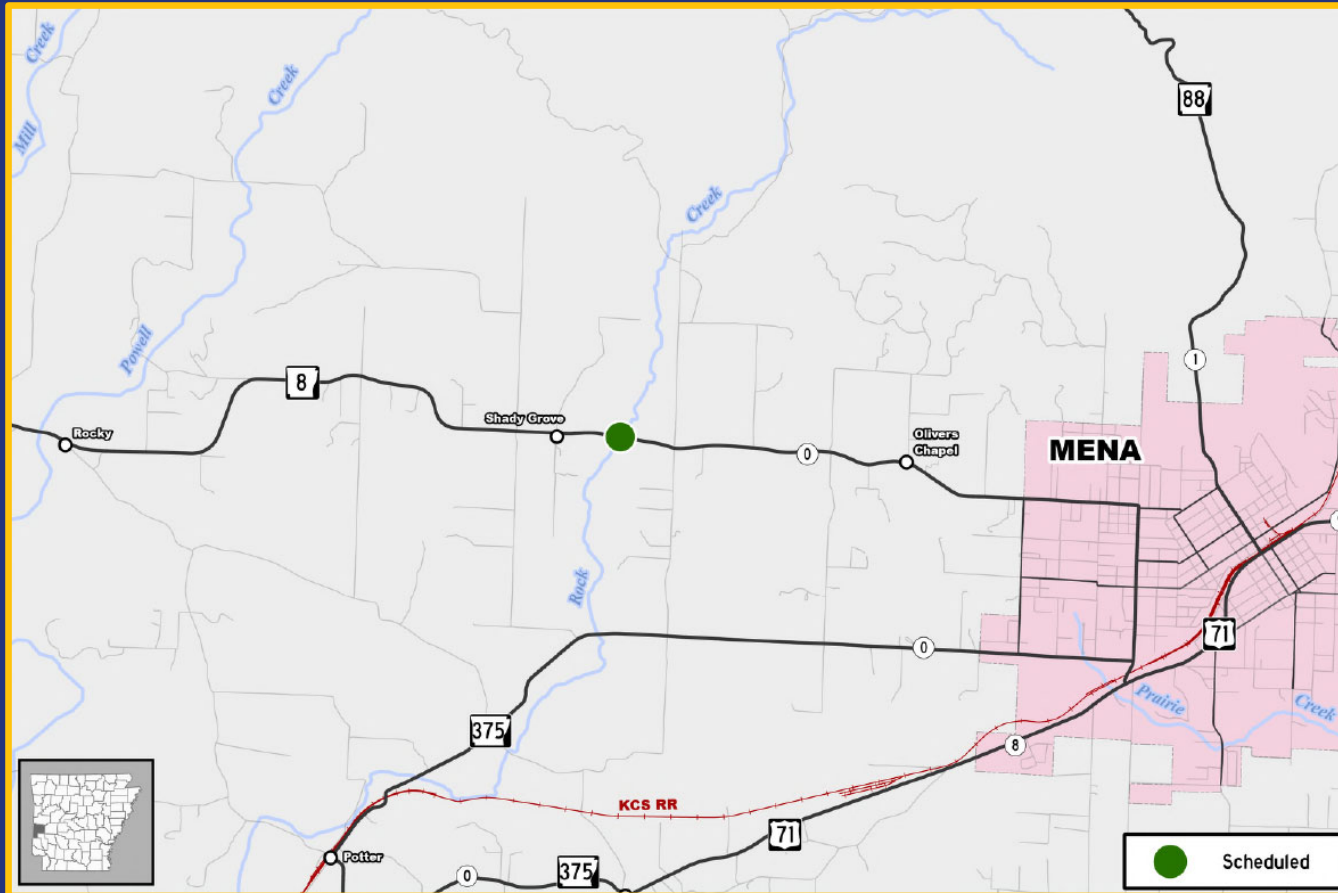
## LOGAN COUNTY





# HIGHWAY 8

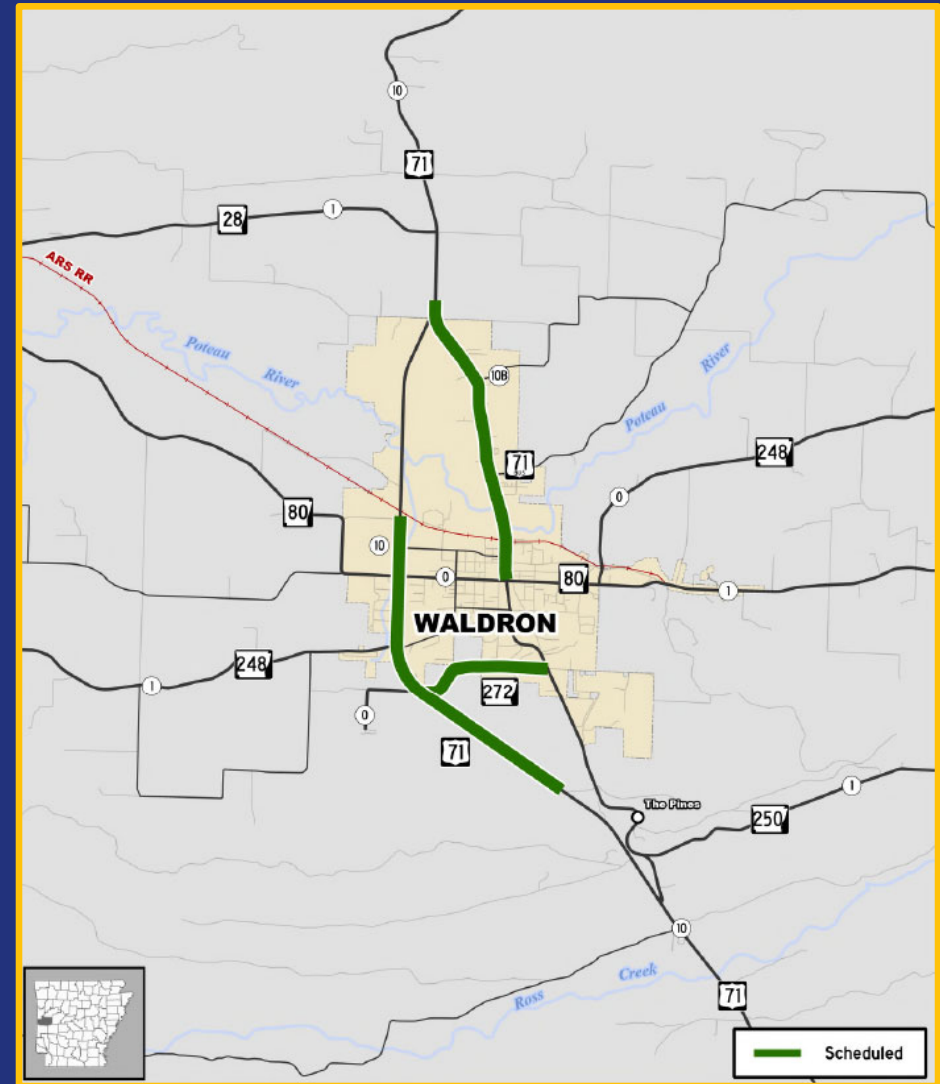
## POLK COUNTY





# HIGHWAYS 71, 71B & 272

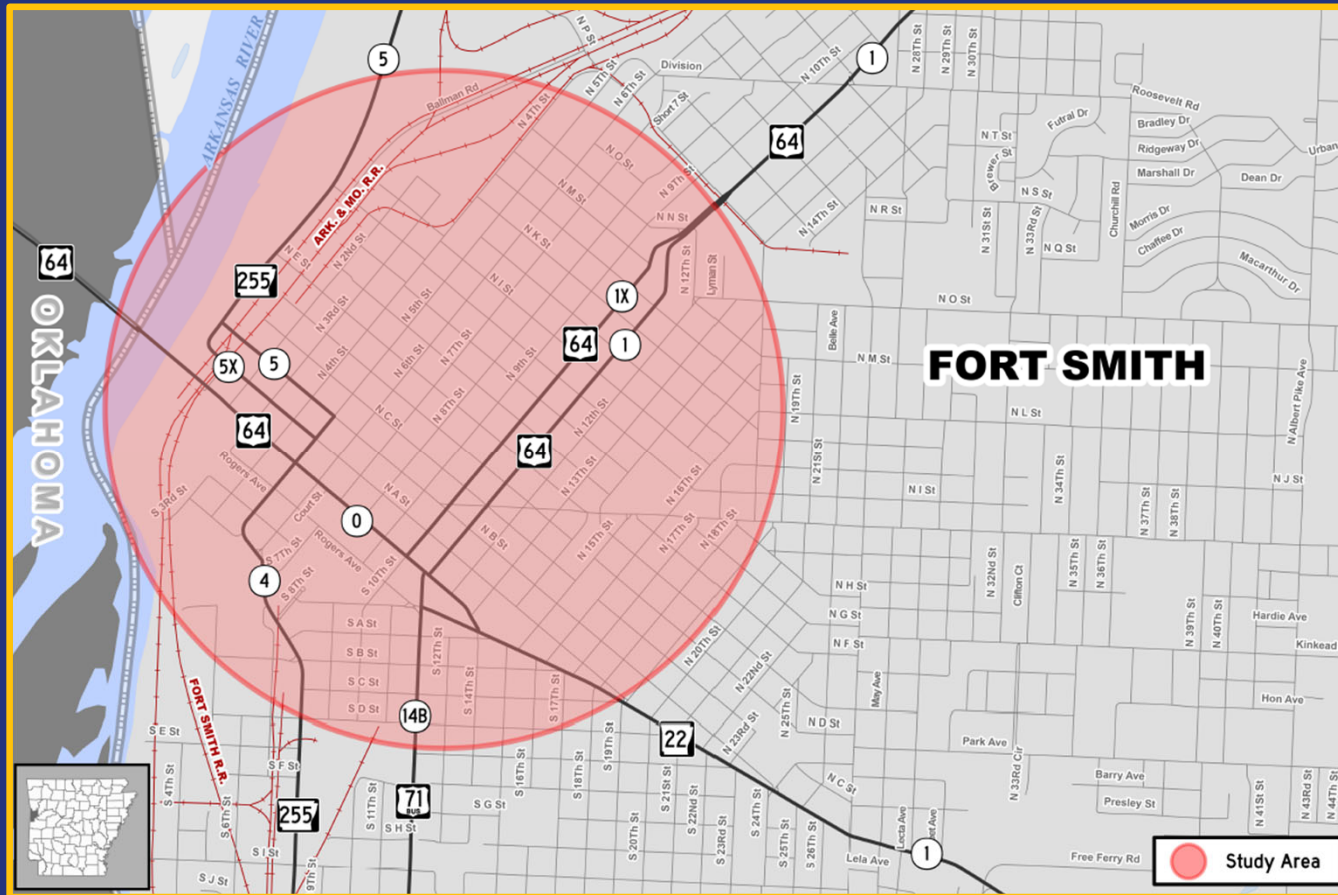
## SCOTT COUNTY





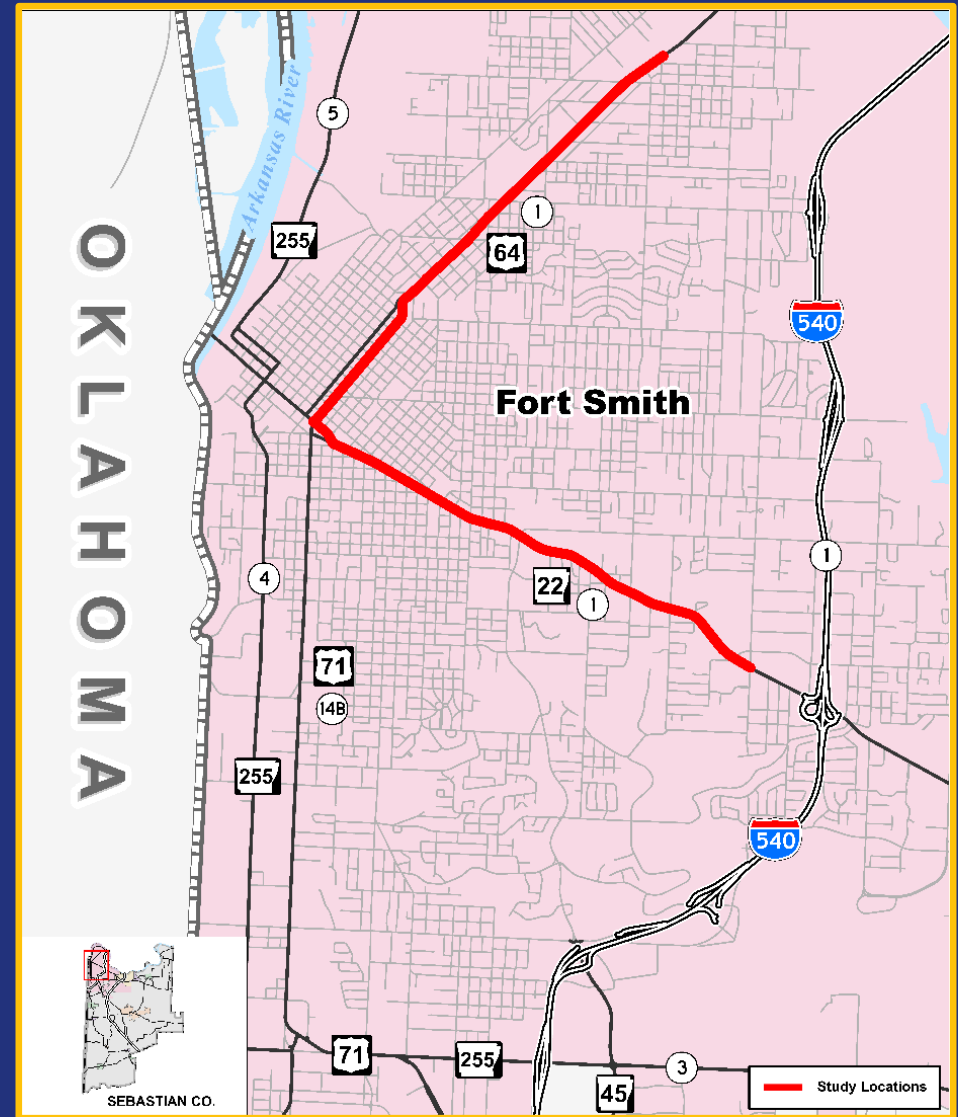
# HIGHWAY 64 PLANNING STUDY

## SEBASTIAN COUNTY





# VULNERABLE ROAD USERS STUDY SEBASTIAN COUNTY





**FRONTIER METROPOLITAN  
PLANNING ORGANIZATION**

TECHNICAL COMMITTEE & POLICY BOARD MEETING

**VICE CHAIRMAN KEITH GIBSON**

ARKANSAS HIGHWAY COMMISSION

NOVEMBER 20, 2025