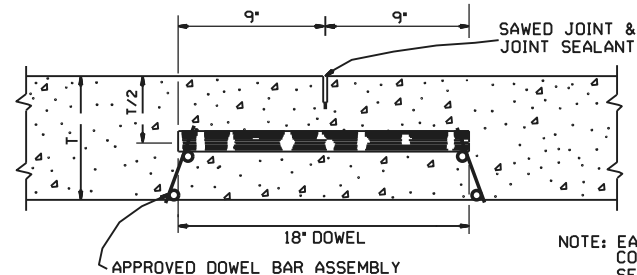


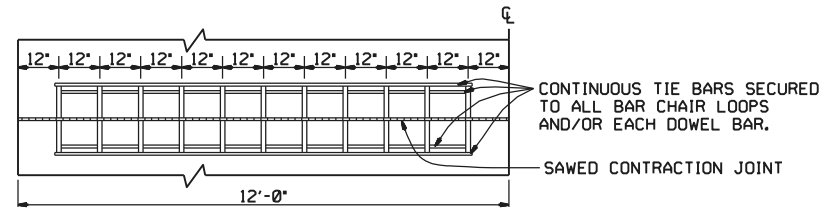
LONGITUDINAL JOINT

NOTE: THE TIE BAR SUPPORT SHOWN ABOVE MAY BE ELIMINATED IF OTHER APPROVED METHODS FOR PLACING AND SUPPORTING THE TIE BARS ARE PROVIDED. TIE BARS SHALL BE 30" FROM TRANSVERSE JOINTS.



ROUND STEEL BAR DOWEL  
1 1/4" DIA. WHEN T < 10'  
1 1/2" DIA. WHEN T ≥ 10'

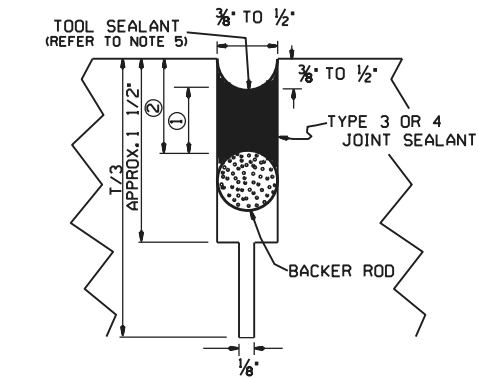
NOTE: EACH DOWEL TO BE COATED ACCORDING TO SECTION 502 OF THE STANDARD SPECIFICATIONS.



ONE-HALF 24' PAVEMENT  
11 DOWELS  
PLAN

NOTE: FOR 20' PAVEMENT USE 19 DOWELS @ 12" CTRS. WITH 12" SPACING FROM C.L. AND EDGE OF SLAB TO FIRST BAR. FOR 15' PAVEMENT USE 14 DOWELS @ 12" CTRS. WITH 12" SPACING FROM C.L. AND EDGE OF SLAB TO FIRST BAR. FOR 26' PAVEMENT USE 25 DOWELS @ 12" CTRS. WITH 12" SPACING FROM C.L. AND EDGE OF SLAB TO FIRST BAR. FOR PAVEMENT WIDTHS OTHER THAN THOSE SHOWN ABOVE, USE DOWELS AT 12" CTRS. WITH 12" MAX. SPACING FROM C.L. TO FIRST BAR. DISTANCE FROM EDGE OF SLAB TO FIRST BAR SHALL BE ADJUSTED TO MAINTAIN 12" DOWEL BAR SPACING

CONTRACTION JOINT DETAILS



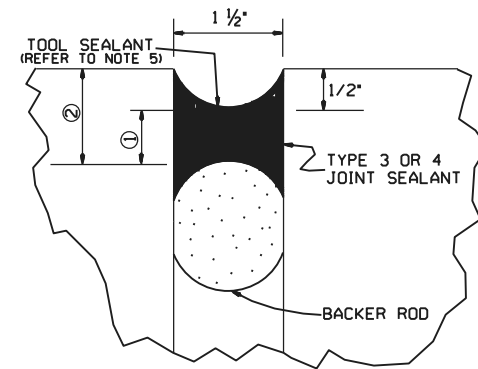
DETAIL OF SAWED CONTRACTION JOINT

JOINT CONFIGURATION FOR TYPE 3 OR 4 JOINT SEALANT

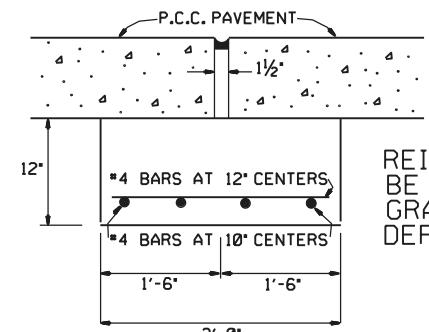
JOINT WIDTH	SEALANT THICKNESS ①	BACKER ROD DIAMETER	BACKER ROD PLACEMENT DEPTH ②
INCHES			
1/4	1/4	3/8	1/2
3/8	1/4	1/2	1/2
1/2	1/4	3/8	1/2
3/4	3/8	1/2	3/4
1 1/2	3/4	2	1 1/4

JOINT CONFIGURATION FOR TYPE 5 JOINT SEALANT

JOINT WIDTH	SEALANT THICKNESS ①	BACKER ROD DIAMETER	BACKER ROD PLACEMENT DEPTH ②
INCHES			
1/4	1/4	3/8	3/4
3/8	3/8	1/2	1

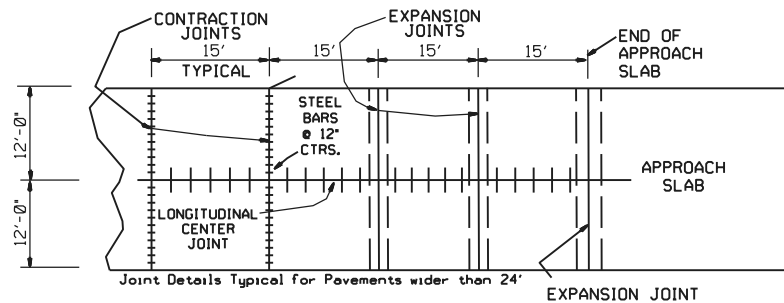


DETAIL OF EXPANSION JOINT

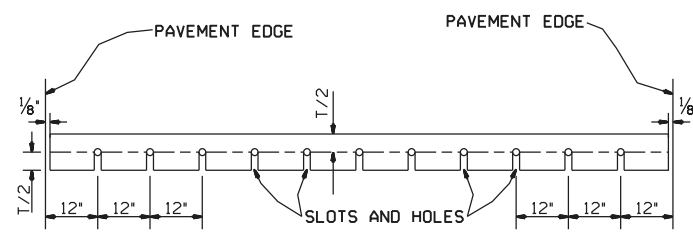


DETAIL OF JOINT SUPPORT FOR EXPANSION JOINTS

REINFORCING SHALL BE GRADE 40 OR GRADE 60 DEFORMED BARS.

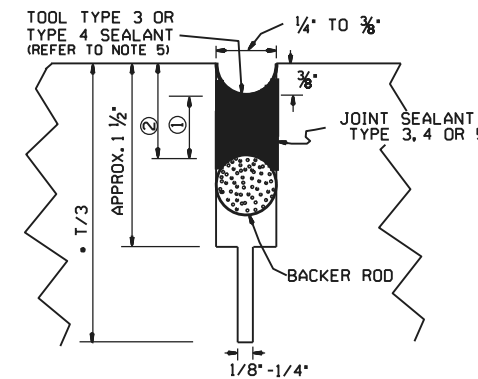


PLAN SHOWING EXPANSION JOINTS AT BRIDGE APPROACH SLABS



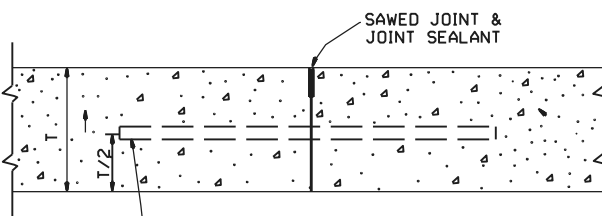
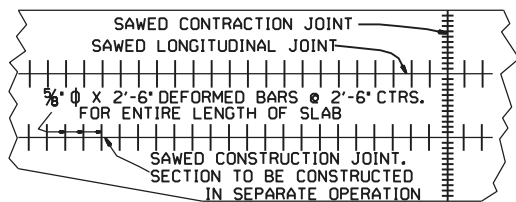
ELEVATION

NOTE: ALL DOWEL BARS SHALL CONFORM TO THE DETAILS FOR CONTRACTION JOINTS.

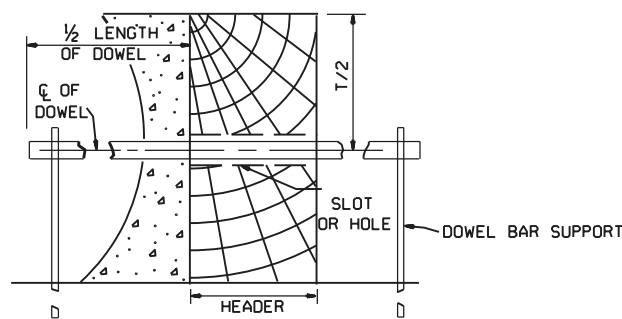


DETAIL OF SAWED LONGITUDINAL JOINT AND LONGITUDINAL CONSTRUCTION JOINT

\*NOTE: T/3 SAW CUT NOT REQUIRED FOR LONGITUDINAL CONSTRUCTION JOINT.



5/8" Ø X 2'-6" DEFORMED BARS @ 2'-6" CTRS. FOR ENTIRE LENGTH OF SLAB  
NOTE: TIE BARS SHALL BE 30" FROM TRANSVERSE JOINTS.  
LONGITUDINAL CONSTRUCTION JOINT



SECTION

TRANSVERSE CONSTRUCTION JOINT

- GENERAL NOTES
1. "T" DENOTES THICKNESS OF SLAB.
  2. DOWEL BARS SHALL BE PLACED IN ACCORDANCE WITH THE DIMENSIONS SHOWN. A TOLERANCE OF PLUS OR MINUS ONE INCH WILL BE ALLOWED FOR THE VERTICAL AND LATERAL PLACEMENT AND A TOLERANCE OF PLUS OR MINUS 1/4" WILL BE ALLOWED FOR THE TILT AND SKEW. DOWEL BARS SHALL BE FIELD COATED FOR A MINIMUM DISTANCE OF 2' GREATER THAN HALF THE LENGTH OF THE BAR WITH AN APPROVED GREASE AS A BOND BREAKER JUST PRIOR TO PLACEMENT OF CONCRETE.
  3. THE EXPANSION JOINT SUPPORT MAY BE CONSTRUCTED WITH CLASS "A", "S" OR PAVING CONCRETE. PAYMENT FOR THE JOINT SUPPORT SHALL BE FOR THE CONTRACT UNIT PRICE BID FOR THE CLASS OF CONCRETE SPECIFIED IN THE PLANS. PAYMENT FOR ALL OTHER WORK AND MATERIALS REQUIRED FOR THE CONSTRUCTION OF THE JOINT SUPPORT SHALL BE INCLUDED IN THE PRICE BID FOR THE ABOVE ITEMS.
  4. CONTRACTION JOINTS SHALL BE CONSTRUCTED ON 15' CENTERS.
  5. TOOLING NOT REQUIRED FOR SELF-LEVELING SILICONE.
  6. UNLESS OTHERWISE SPECIFIED IN THE PLANS, CONCRETE SHOULDERS SHALL BE CONSTRUCTED ACCORDING TO THE DETAILS SHOWN HEREON. CONTRACTION JOINTS SHALL MATCH CONTRACTION JOINTS IN THE LANES.
  7. TIE WIRES IN DOWEL BAR ASSEMBLIES SHALL NOT BE CUT PRIOR TO PLACEMENT OF PAVING CONCRETE.

REVISED TIE BAR AND DOWEL SPACING	REV. EXP. JOINT REF ON APP. SLAB	ADDED GENERAL NOTE 7	REMOVED TIE BAR COATING & REVISED GENERAL NOTES	ADDED TOOL SEALANT AND NOTE 5f. REVISED NOTE 3	DATE	REV	DESCRIPTION
11-06-25							
11-07-19							
05-25-06							
10-09-03							
11-16-01							



TRANSVERSE & LONGITUDINAL JOINTS FOR CONCRETE PAVEMENT (NON-REINFORCED)

DATE EFFECTIVE	STANDARD DRAWING	CPTJ-6A
11-06-2025		