

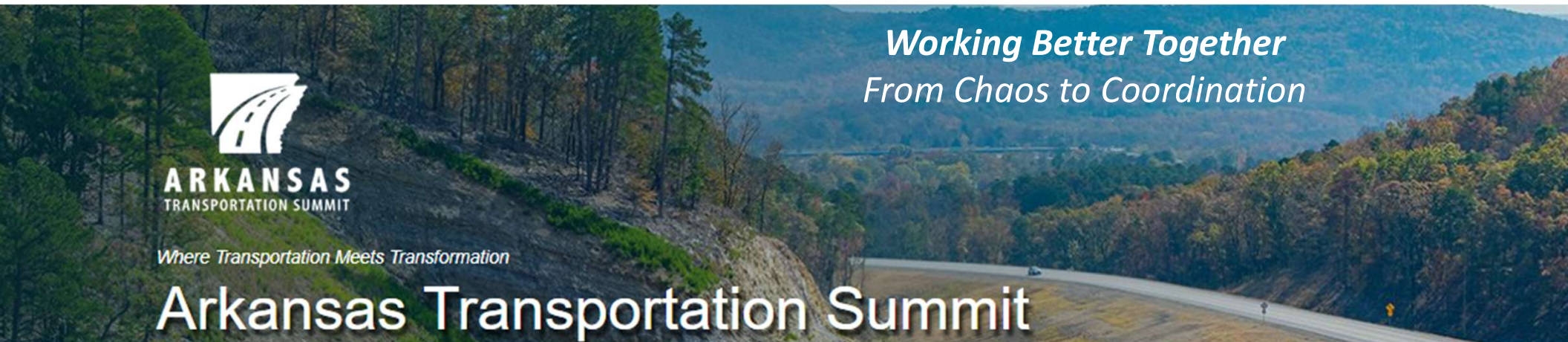
# Arkansas Division of Emergency Management



The Arkansas Division of Emergency Management (ADEM) provides efficient state level leadership, resources, and coordination for a comprehensive all-hazards approach to emergencies and disasters impacting Arkansas.

Leadership – Excellence – Teamwork – Compassion

Scott Bass, Deputy Director, Office of Preparedness and Response



Arkansas' Homeland Security & Preparedness Agency

# Arkansas Division of Emergency Management

## HISTORY



**Governor Winthrop Rockefeller**

- Established in 1953 as the State Civil Defense Agency through ACT 321
- Moved to Conway in 1957
- Underground facility built in 1965
- Agency becomes Office of Emergency Services in 1973
- OES is established as an independent state agency in 1981

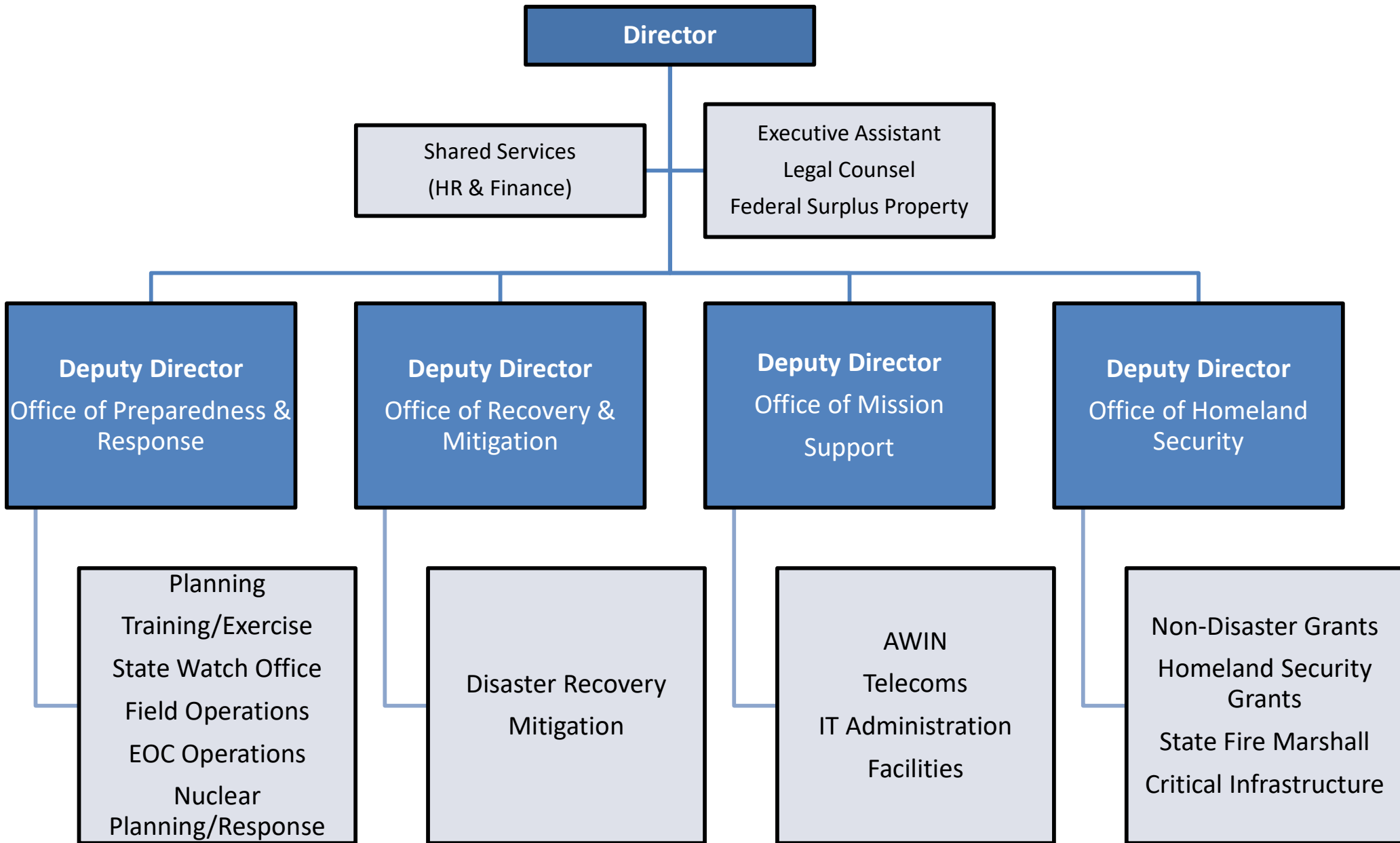
# Arkansas Division of Emergency Management

- Agency receives “department status” renamed Arkansas Dept. of Emergency Management in 1999
- Awarded largest Homeland Security Grant for new Emergency Operations Center in 2003 - \$12.3 million
- Construction begins on 39,000 facility in 2005 aboard Camp Joseph T. Robinson
- Complete construction & move-in June 2007
- 2019, Moved under the Dept. of Public Safety and now the Division of Emergency Management



Arkansas' Homeland Security & Preparedness Agency

# Arkansas Division of Emergency Management



Arkansas' Homeland Security & Preparedness Agency

Arkansas Division of Emergency Management



# DISASTER RESPONSE



Arkansas' Homeland Security & Preparedness Agency

# Arkansas Division of Emergency Management

## DISASTERS ARE LOCAL

They affect us as citizens, our neighbors and our communities. ADEM works with the local governments and other partners to make sure that our communities return to normal as soon as possible.

### Natural

Flooding  
Severe Storms/Tornadoes  
Ice/Winter Storms  
Earthquakes  
Epidemics/Pandemics

### Man-Made

Hazardous Materials Spills  
Search & Rescue  
Downed Aircraft  
Terrorism  
Cybersecurity

# Arkansas Division of Emergency Management

## State Watch Office

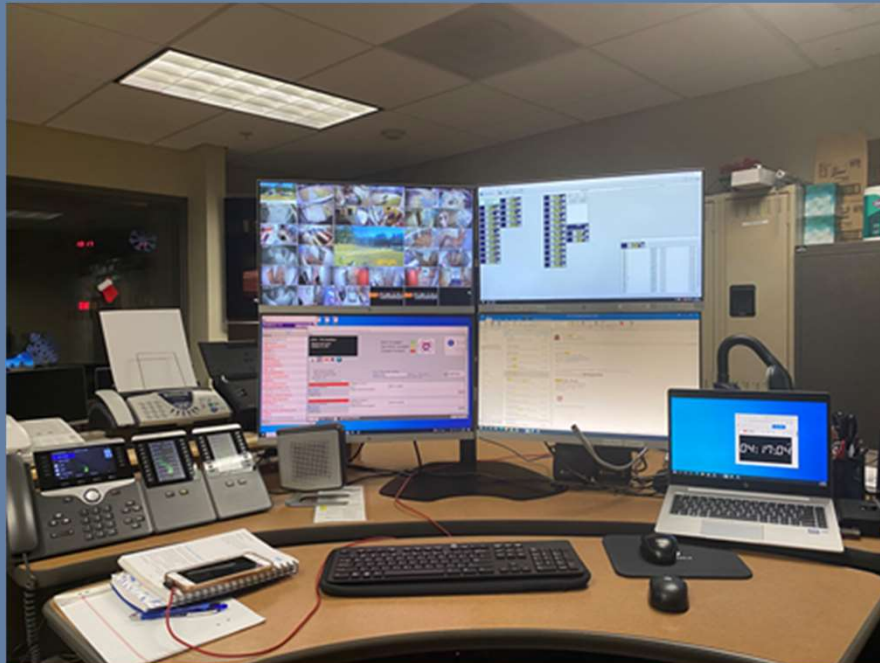
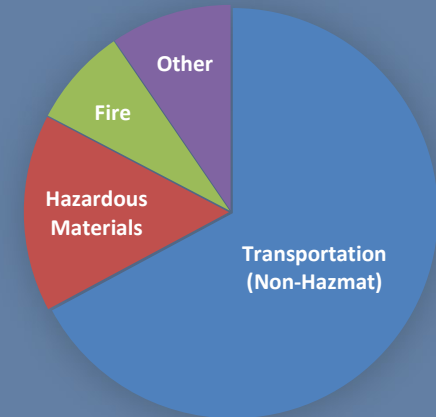
Serves as the 24-hour State Warning Point for weather related events, man-made incidents, hazardous material incidents and transportation missions, and state resource coordination.



### 2024 Incidents – 2701 Total

#### Other Incidents

Search and Rescue	61
Natural Disaster	30
Public Threat Event	19
Special Event	17
Aviation Incident	15
Miscellaneous Impact	13
Utility Failure	10
Pipeline Event	10
National Response Center Investigation	3



# Arkansas Division of Emergency Management

## What We Do



### Incident Intake

*Duty Officers monitor and receive emergency information from several resources and retain the official record of these incidents in WebEOC. These sources include ARDOT notifications, County and City Coordinators, and AWIN radio traffic.*



### Test Communication Systems

*The ASWO has several forms of communication that require testing daily, weekly, or monthly, to ensure functionality and operability. Systems include: EAS, NAWAS, MAC, ANO, Sat Phone, ACIC, and more.*



### Phones and Visitors

*Duty Officers are responsible (as needed) for directing phone calls to the appropriate parties and receiving visitors to ADEM.*



### MAC Talk Group

*Duty Officers monitor and maintain Mutual Aid Talk Group Channels that are used for agency to agency communications from different jurisdictions.*



### ASWO Shift Reports

*Duty Officers compile incidents reported during a shift into a single incident report that is sent out twice daily. This report captures the incidents and any updates added since the incident began.*



### Mobile Command Vehicle

*Duty Officers are responsible for the deployment and operability of the Mobile Command Vehicle and the communication equipment which it carries.*

# Arkansas Division of Emergency Management

## Examples of Reports Taken by ASWO



- Transportation Incidents- e.g. Accident on highway/interstate with injury or blocking all lanes
- Hazardous Materials- subgroups include Highway, Air, River, Fixed Facility, and more
- Public Threat Events- Active Shooter, Bomb Threats, General, and White Powder
- Aviation Incidents- Downed/Missing Aircrafts
- Natural Disasters
- Radioactive Materials Movement
- Search and Rescue
- Water Shortages
- Nuclear Events/Attack/Arkansas Nuclear One



# Arkansas Division of Emergency Management

## Mobile Command Vehicle (MCV)

August 2008 Hurricane Gustav  
evacuee support

April 2009 Mena Tornado response  
in Polk County

2011 White County Flooding

March 2018 Humnoke Levee  
flooding in Lonoke County

October 2021, 2022, 2023 Arkansas  
State Fair with Pulaski County  
Emergency Management and  
Arkansas State Police

March 2025 Cave City Tornado  
response in Sharp County

# Arkansas Division of Emergency Management

## Field Operations Branch

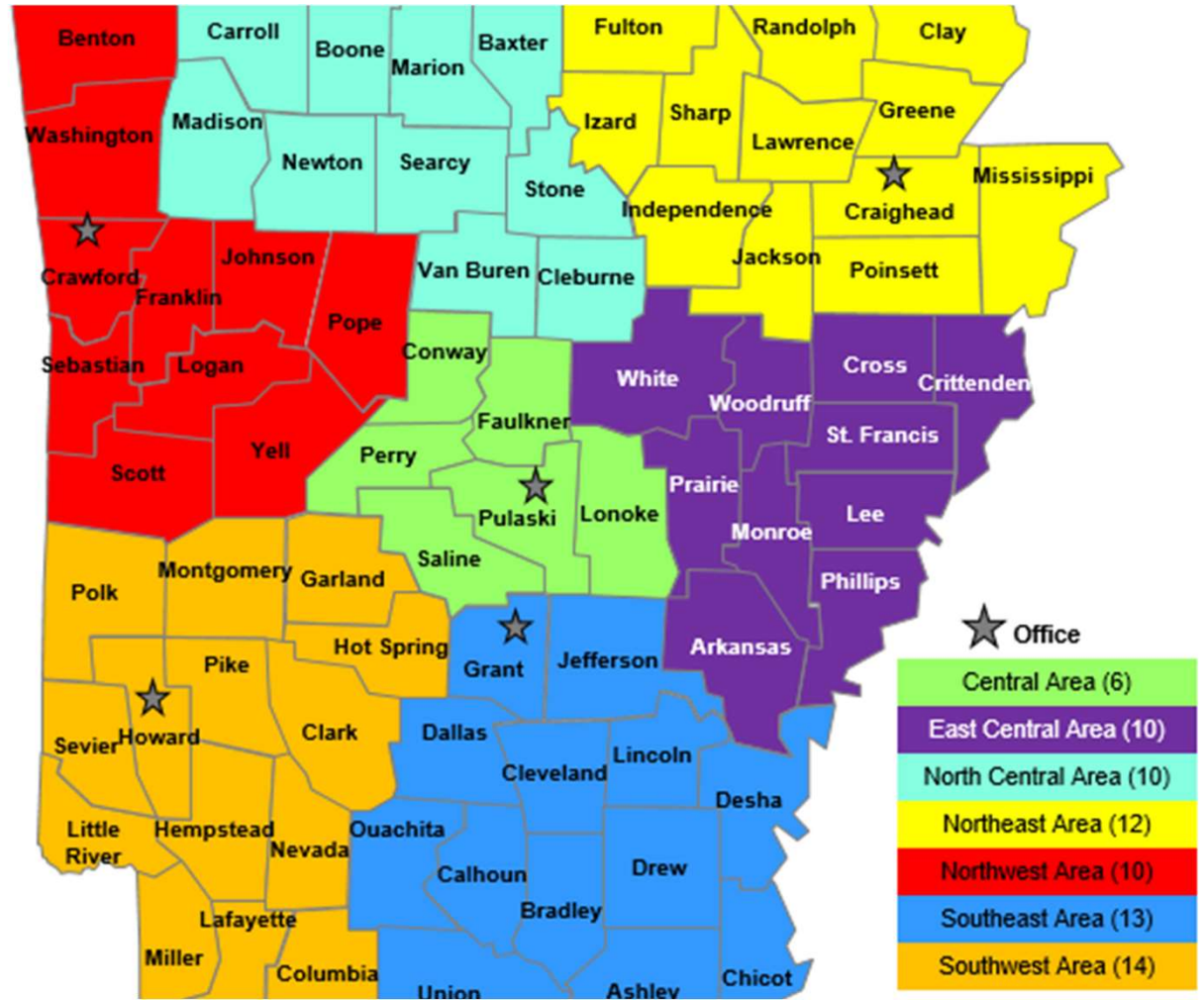
Provide support and coordination with the State EOC

Work directly with local jurisdictions during response and recovery efforts

Field Support for all ADEM Programs



# FIELD OPERATIONS



# Arkansas Division of Emergency Management



Arkansas' Homeland Security & Preparedness Agency



# Arkansas Division of Emergency Management

## EMERGENCY SUPPORT FUNCTIONS

PROVIDE SUPPORT AND RESOURCES TO THE STATE DURING AN EMERGENCY

- 1 - Transportation (ARDOT)
- 2 - Communications (ADEM)
- 3 - Public Works and Engineering (ARDOT)
- 4 - Firefighting (AR Dept. of Agriculture/Forestry)
- 5 - Emergency Management (ADEM)
- 6 - Mass Care, Housing and Human Services (DHS)
- 7 - Resource Support (DFA)
- 8 - Public Health and Medical Services (ADH)
- 9 - (Urban) Search and Rescue (AR Game and Fish )
- 10 - Oil and Hazardous Materials Response (ADEQ)
- 11 - Agriculture and Natural Resources (AR Dept. of Agriculture)
- 12 - Energy (AR Public Service Commission)
- 13 - Public Safety and Security (AR State Police)
- 14 – Private Sector and Infrastructure (ADEM)
- 15 - External Affairs (ADEM)
- 16 – Cybersecurity (DIS)



Arkansas Department of Health



Arkansas' Homeland Security & Preparedness Agency

# Arkansas Division of Emergency Management

## STATE EMERGENCY OPERATIONS CENTER (SEOC)

The SEOC supports local jurisdictions by providing requested resources, information, advice, strategic assistance, and communication.

The SEOC uses NIMS and ICS as the basic concept for operation and can be activated at one of three activation levels which allows for flexibility to match the manpower requirements with the mission requirements.

Life, Health, and Safety

Restoration of essential services

Coordination among all levels of government agencies

Restoration of essential functions

Environmental protection

Property protection

# Arkansas Division of Emergency Management

## SITUATION AWARENESS

Critical information the SEOC needs from local governments and first responders.

Disaster Declarations

Requests for assistance

Evacuations

Damage Reports

Utility Outages

Local Impacts

Shelters

Staging Areas

Leading the Governor's & Director's Priorities/Policies

## DECLARATIONS

County Judge is authorized to declare a disaster at the local level.

Required within five business day of the incident.

Declarations are required to gain access to State Resources and Disaster Assistance Grants.



Emergency Management Assistance Compact



EMAC is a state-to-state mutual aid agreement that facilitates the sharing of resources (services, personnel, equipment, & commodities) across state lines during times of emergency and disaster.

All 50 States  
Puerto Rico  
US Virgin Islands  
Northern Mariana Islands  
Guam  
District of Columbia

# Arkansas Division of Emergency Management

## How Can EMAC be Utilized?

- National Guard (Title 32 and SAD)
- Energy
- Cyber
- Transfer of Services
  - Newborn blood screening
  - 911 calls
- Medical Resources
- Public Health
- EMS
- Law Enforcement
- Incident Management
- Communications
- 911 operators/equipment
- Commodities
- Search & Rescue
- Public Works
- Water/Wastewater personnel/equipment
- EOC Support
- Public/Individual Assistance
- Debris Management
- Public Information
- Donations Management
- Human Services
- Sheltering
- And More...



**Any Resource/Capability Can Be Shared Between States**

# DISASTER RECOVERY



# Arkansas Division of Emergency Management

Works with individuals as well as local governments, state agencies, and private non-profit organizations affected by an incident to recover effectively, including, but not limited to, rebuilding infrastructure systems;

Providing adequate interim and long-term housing for survivors;

Restoring health, social, and community services; promoting economic development; and

Restoring natural and cultural resources.



Arkansas Division of Emergency Management

# Preliminary Damage Assessments



Arkansas' Homeland Security & Preparedness Agency

# SEPARATING YOUR DEBRIS

Debris should be placed curbside, without blocking the roadway or storm drains.



## DO NOT STACK OR LEAN YOUR DEBRIS

Placing debris on utility poles, trees, fire hydrants, or other structures makes it difficult to remove.

## UNSURE WHERE TO PLACE DEBRIS?

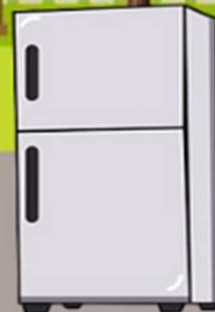
If you don't have a sidewalk, utility line, or ditch in front of your house, place your debris at the edge of your property before the curb.

## NO PICKUP ZONE

Any debris placed from the sidewalk toward your home will not be picked up.

## UNACCEPTED ITEMS

Household trash and bagged debris will not be picked up as part of the debris collection.



### CONSTRUCTION & DEMOLITION

Brick  
Drywall  
Lumber  
Plumbing

### VEGETATIVE

Logs  
Plants  
Leaves  
Branches

### WHITE GOODS

Refrigerators  
Microwaves  
Dishwashers  
Washers & Dryers

### ELECTRONICS

iPads  
Radios  
Computers  
Televisions

### HOUSEHOLD HAZARDOUS WASTE

Oils  
Paints  
Pesticides  
Cleaning Supplies

# HAZARD MITIGATION



*Community safe room funded through the HMGP program used in North Little Rock during the March 31 tornado.*

## HAZARD MITIGATION

Hazard Mitigation is any action taken to reduce or eliminate long term risk to people and property from natural disasters.

Hazard Mitigation planning is a process used by State and local governments to identify risks and vulnerabilities associated with natural disasters and develop mitigation strategies to reduce or eliminate long term risks.

Examples of Hazard Mitigation projects funded by FEMA's Hazard Mitigation Assistance grant programs may include, but are not limited to buy-outs, elevations and safe rooms.

# Arkansas Division of Emergency Management



*Jasper School District and Marshall School District community safe rooms funded through the HMGP program.*



*Pictures from infrastructure upgrade projects in Sheridan and Sherwood completed in 2023.*

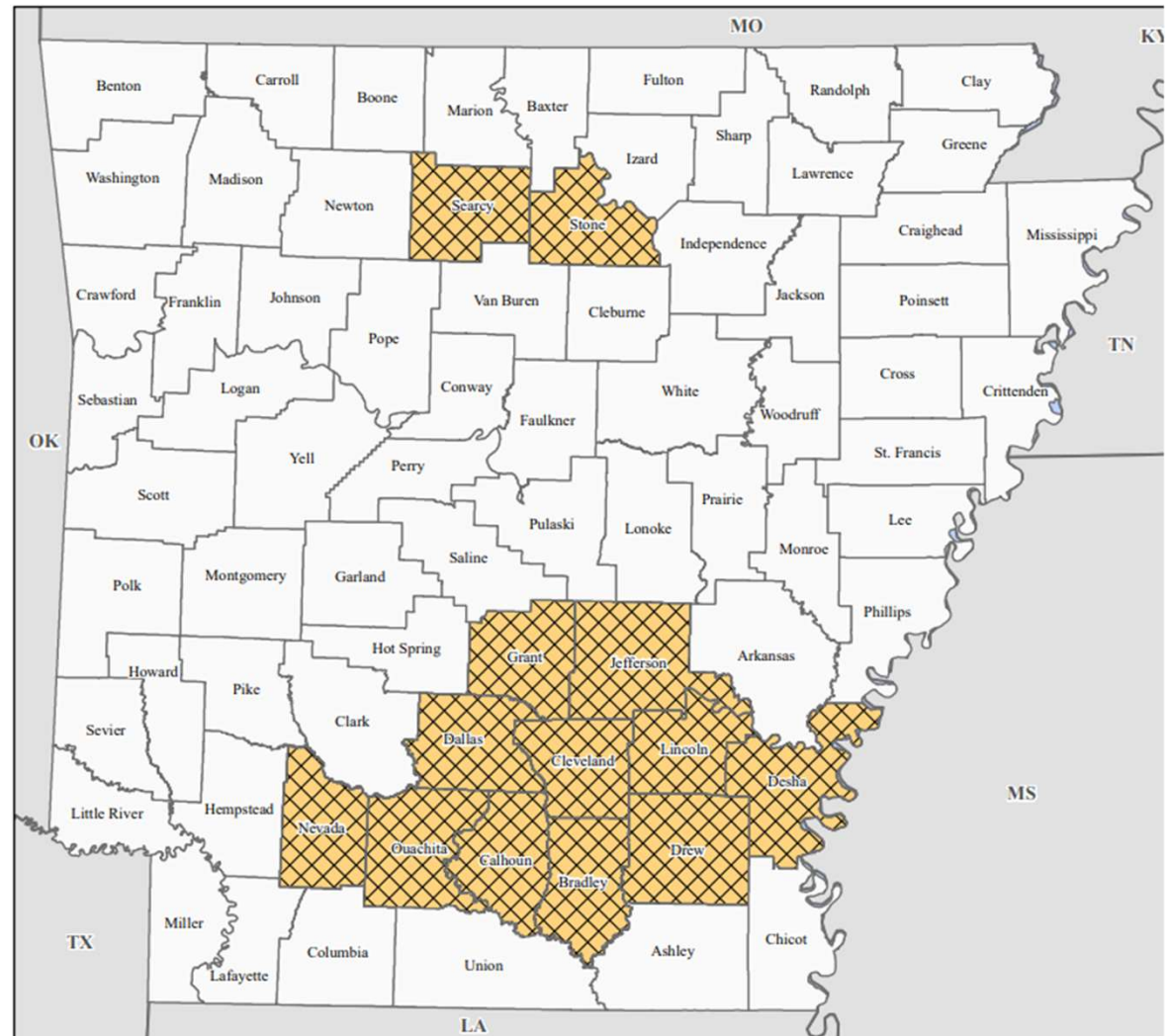
# Arkansas Division of Emergency Management

## Arkansas Severe Winter Storm DR-4700-AR

Incident Period: Jan 30, 2023 - Feb 2, 2023

### FEMA-4700-DR, Arkansas Disaster Declaration as of 04/04/2023

Public Assistance	Amount
Emergency Work (Categories A-B) - Dollars Obligated	\$4,492,477.56
Permanent Work (Categories C-G) - Dollars Obligated	\$4,917,259.84
<b>Total Public Assistance Grants Dollars Obligated</b>	<b>\$10,113,838.72</b>





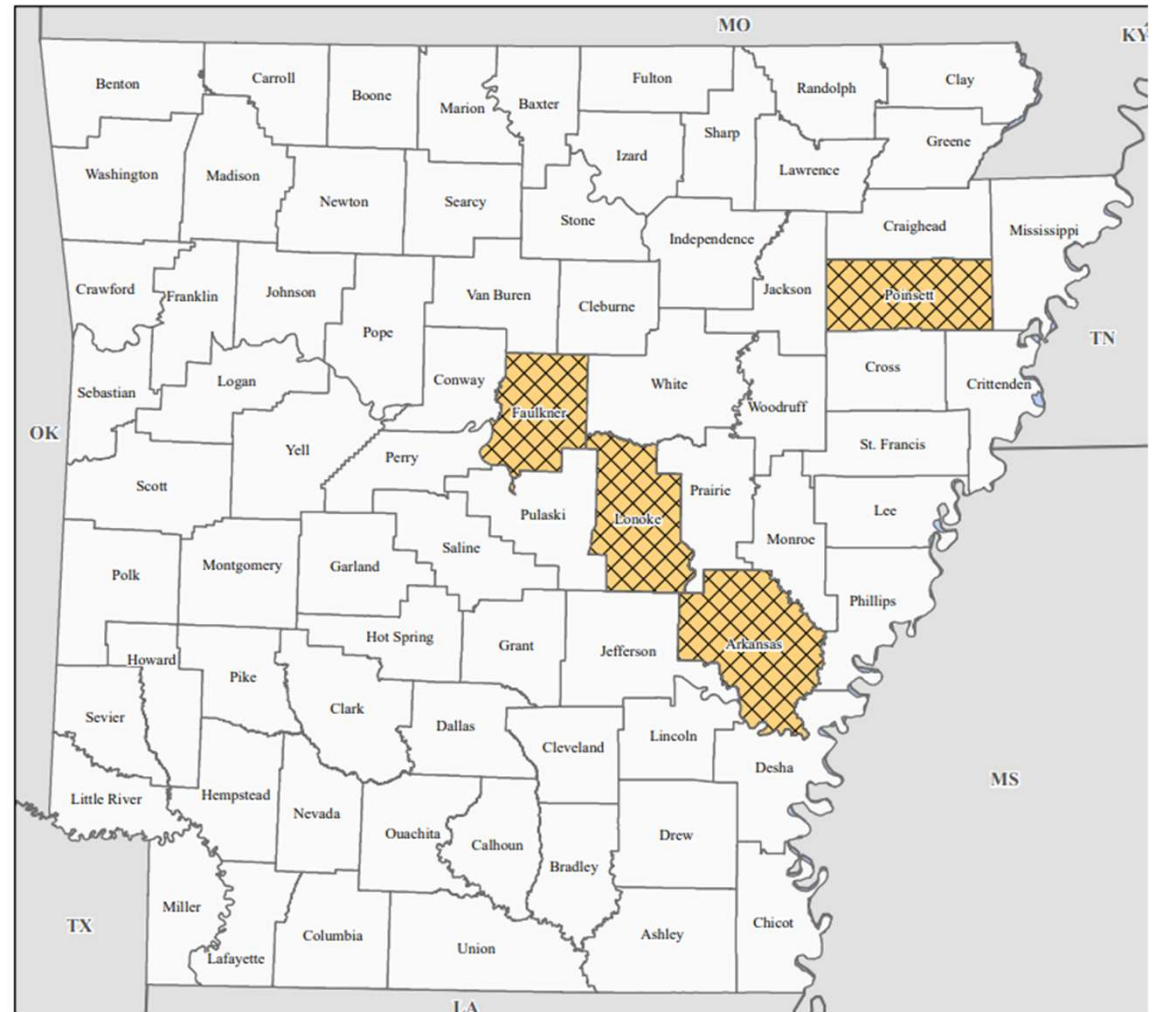
# Arkansas Division of Emergency Management

## Arkansas Severe Storms, Straight-line Winds, and Tornadoes

Incident Period: Jun 25, 2023 - Jun 26, 2023

FEMA-4748-DR, Arkansas Disaster Declaration as of 11/14/2023

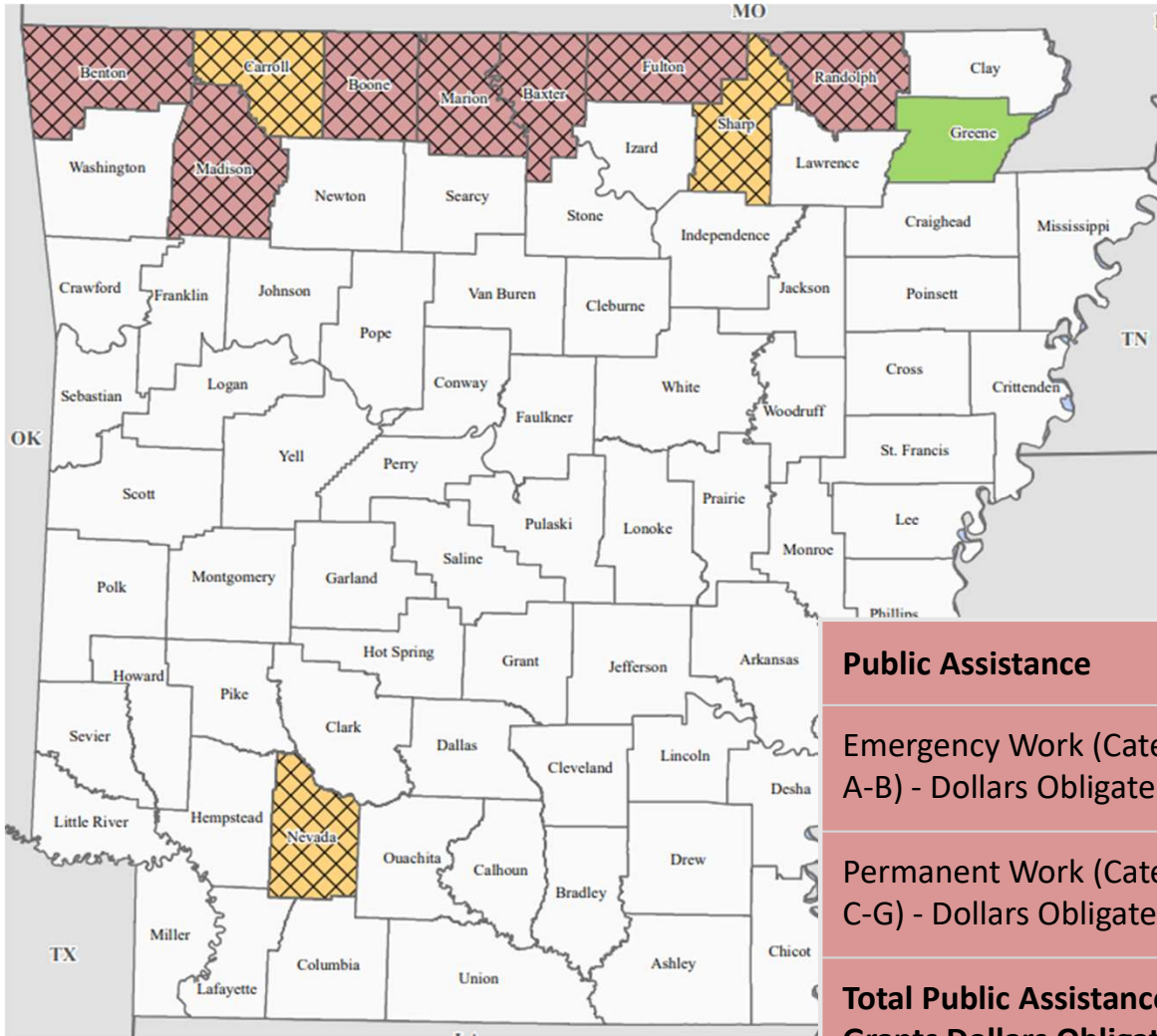
Public Assistance	Amount
Emergency Work (Categories A-B) - Dollars Obligated	\$819,856.32
Permanent Work (Categories C-G) - Dollars Obligated	\$479,499.44
<b>Total Public Assistance Grants Dollars Obligated</b>	<b>\$1,724,894.29</b>



# Arkansas Division of Emergency Management

## Arkansas Severe Storms, Straight-line Winds, Tornadoes, and Flooding DR-4788-AR

Incident Period: May 24, 2024 - May 27, 2024



Individual Assistance	Amount
Total Housing Assistance (HA) - Dollars Approved	\$4,360,531.36
Total Other Needs Assistance (ONA) - Dollars Approved	\$3,794,982.24
<b>Total Individual &amp; Households Program Dollars Approved</b>	<b>\$8,155,513.60</b>
Individual Assistance Applications Approved	2284

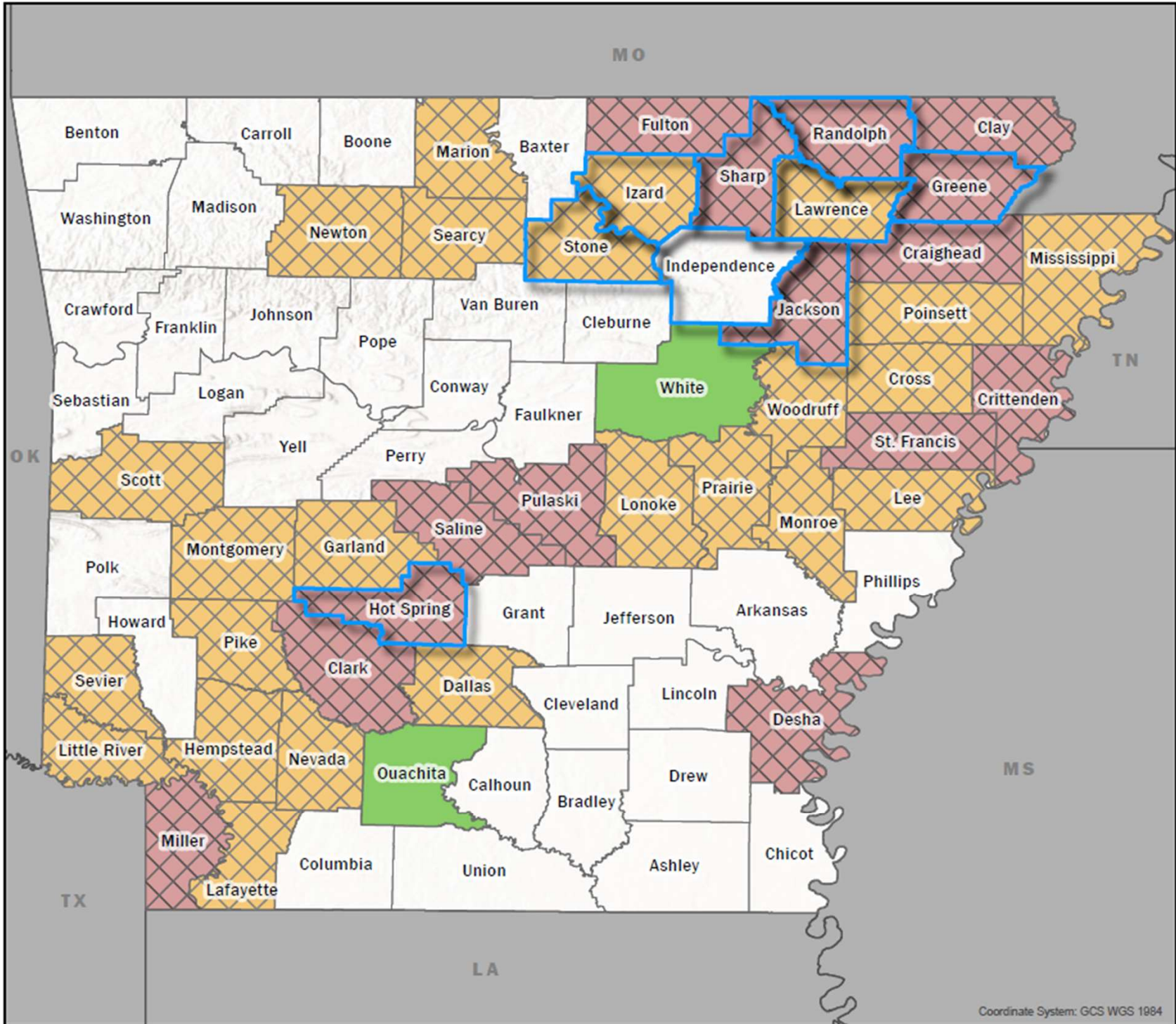
Public Assistance	Amount
Emergency Work (Categories A-B) - Dollars Obligated	
Permanent Work (Categories C-G) - Dollars Obligated	
<b>Total Public Assistance Grants Dollars Obligated</b>	

# DR-4865-AR / DR-4873-AR: Designated Counties Map

As of 6/24/2025

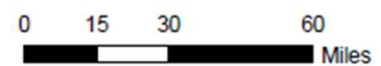


Description:  
This product shows counties designated for Federal assistance through a Presidential Disaster Declaration. Additionally, this product depicts the types of assistance available to each designated county.



## Designated Counties

- 4865DR-AR**
  - 4865 Individual Assistance
- 4873DR-AR**
  - 4873 Individual Assistance
  - 4873 Individual Assistance and Public Assistance (Categories A - G)
  - 4873 Public Assistance (Categories A - G)



Coordinate System: GCS WGS 1984

# Arkansas Division of Emergency Management

## Arkansas Severe Storms and Tornadoes DR-4865-AR

**Incident Period:** Mar 14, 2025 - Mar 15, 2025

**Declaration Date:** May 8, 2025

Individual Assistance	Amount
Total Housing Assistance (HA) - Dollars Approved	\$1,995,915.32
Total Other Needs Assistance (ONA) - Dollars Approved	\$870,896.83
<b>Total Individual &amp; Households Program Dollars Approved</b>	<b>\$2,866,812.15</b>
Individual Assistance Applications Approved	1,249

**37 Survivor Assistance Locations Opened throughout the state. State Led, FEMA supported.**

## Arkansas Severe Storms, Tornadoes, and Flooding DR-4873-AR

**Incident Period:** Apr 2, 2025 - Apr 22, 2025

**Declaration Date:** May 21, 2025

Individual Assistance	Amount
Total Housing Assistance (HA) - Dollars Approved	\$6,830,344.99
Total Other Needs Assistance (ONA) - Dollars Approved	\$7,039,275.51
<b>Total Individual &amp; Households Program Dollars Approved</b>	<b>\$13,869,620.50</b>
Individual Assistance Applications Approved	8,628

Public Assistance (97 Applicants)	Amount
Emergency Work (Categories A-B) - Dollars Obligated	Estimating
Permanent Work (Categories C-G) - Dollars Obligated	Estimating
<b>Total Public Assistance Grants Dollars Obligated</b>	<b>Estimating</b>

# Arkansas Division of Emergency Management

## PREPAREDNESS

Planning, Training, Exercise and Continuity of Operations

Train the emergency management community in disaster response and recovery;

Draft plans describing how the State will react to and resolve emergencies and disasters; and

Test the effectiveness of training and planning efforts by means of exercise.



## PREPAREDNESS PARTNERS

Local Emergency Manager (County EOC)  
Local Emergency Planning Commission (LEPC)  
Fire, Law Enforcement, Public Health, etc.  
Volunteer Organizations  
Faith-Based Organizations  
Business and Community leaders

Arkansas Division of Emergency Management

## NUCLEAR PLANNING & RESPONSE PROGRAM



# **EMERGENCY INSTRUCTIONS**

***ARKANSAS NUCLEAR ONE***



Arkansas' Homeland Security & Preparedness Agency

# Arkansas Division of Emergency Management

Arkansas Division of Emergency Management  
Bldg. 9501 | Camp JT Robinson  
North Little Rock, AR 72199  
501-683-6700



Leadership – Excellence – Teamwork – Compassion

ADEM employees guarantee timely and compassionate service to the residents of Arkansas before, during, and after disaster. We will be there for you as “Your Partner in Preparedness.”

@AR\_Emergencies   

Arkansas' Homeland Security & Preparedness Agency

