

# BOMA CE & TRADE SHOW

HUNTER LAKE | DISTRICT 6 ENGINEER

APRIL 16, 2026



**ARDOT**





# ARDOT QUICK FACTS

**3<sup>RD</sup> LARGEST  
STATE  
AGENCY**

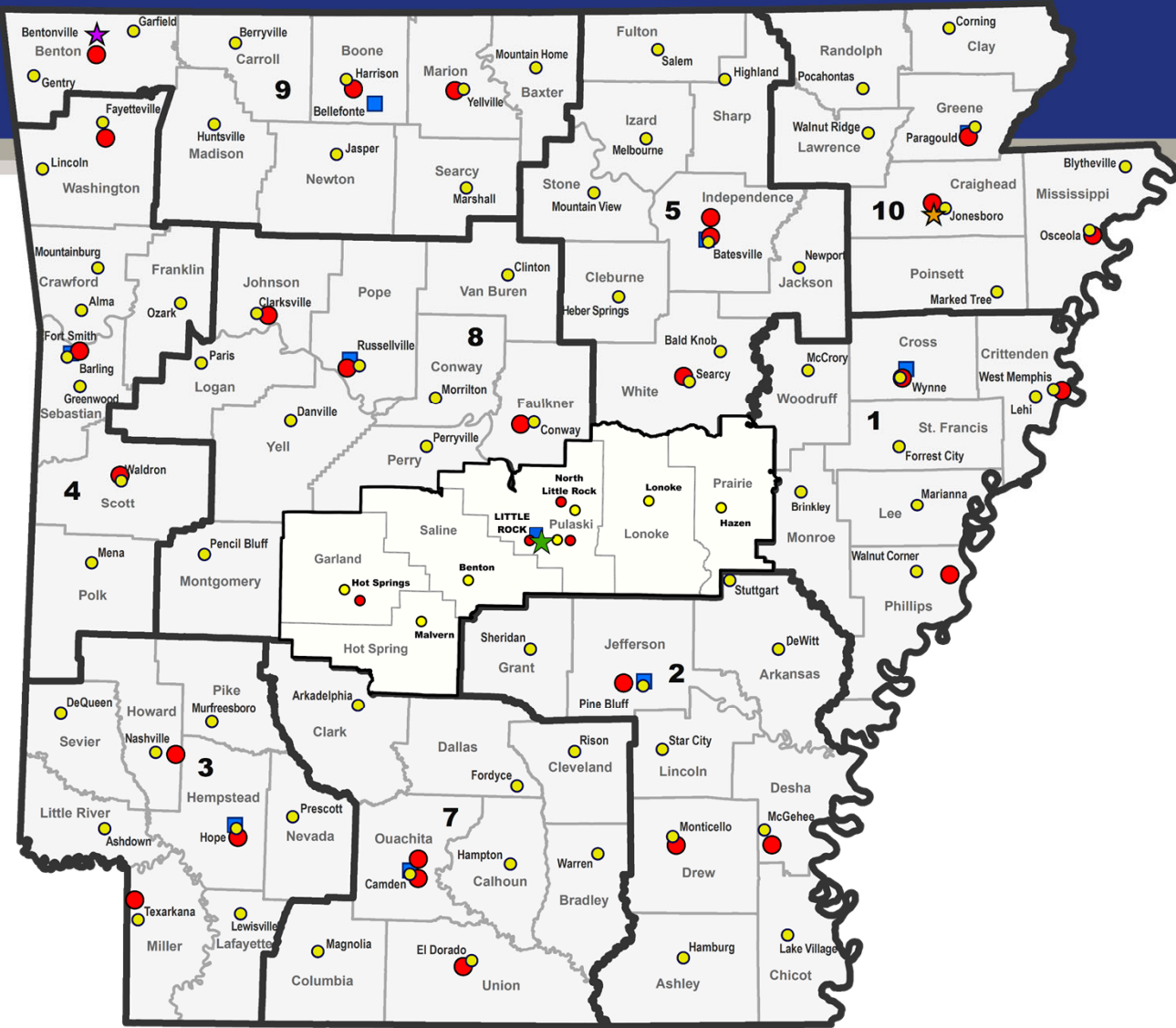
**MAINTAIN MORE  
THAN 16,000 MILES  
OF HIGHWAY &  
MORE THAN 7,000  
BRIDGES**

**CENTRAL  
OFFICES  
LOCATED IN  
LITTLE ROCK**

**HIGHWAY SYSTEM  
VALUED AT \$200  
BILLION**

**HOME TO OLDEST LAW  
ENFORCEMENT AGENCY IN ARKANSAS**

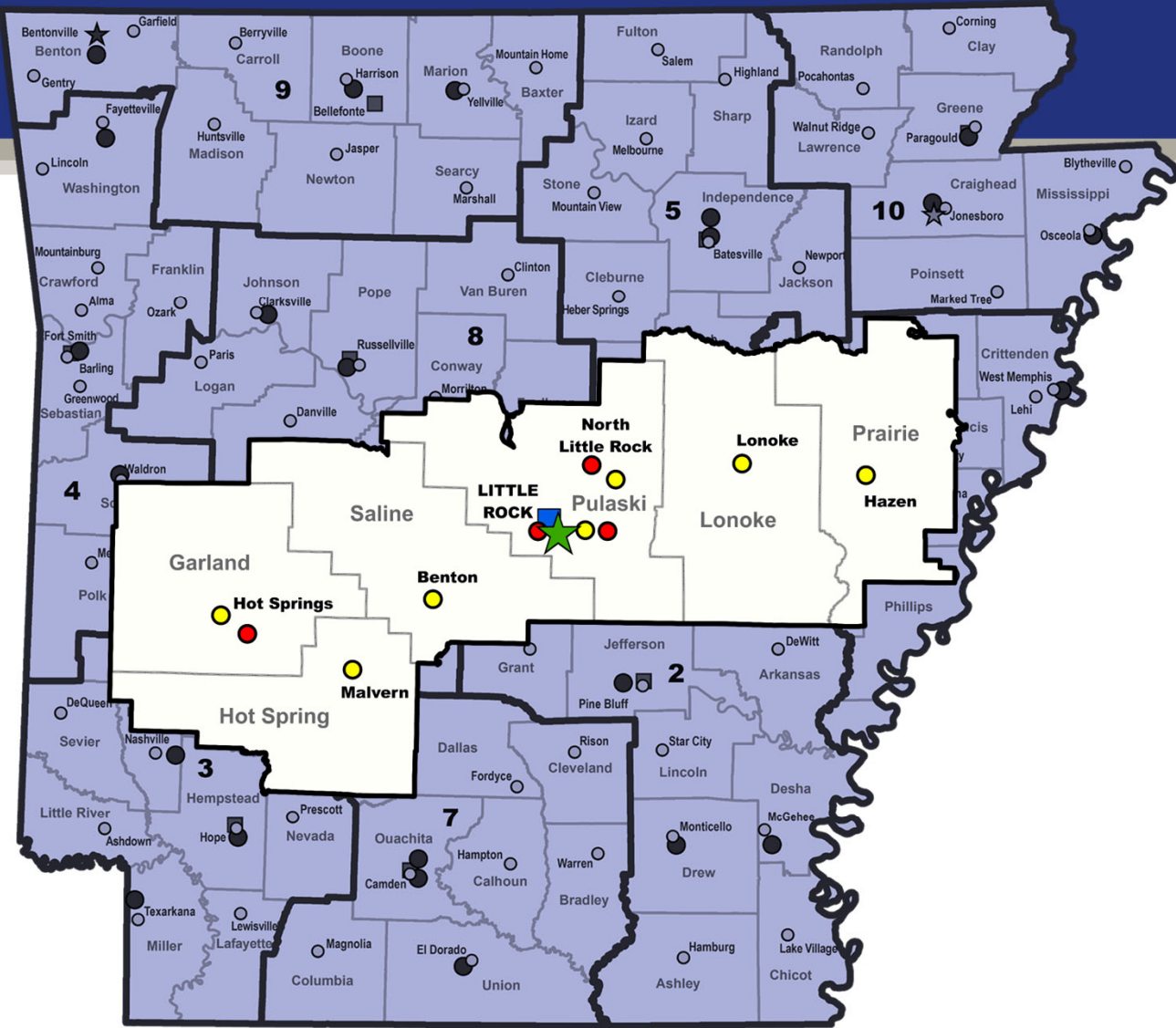
# ARDOT OFFICES



## FACILITY TYPE

- ★ Central Offices
- ★ Northwest Office
- ★ Northeast Office
- Area Headquarters
- District Headquarters
- Resident Engineer Offices

# ARDOT OFFICES



### FACILITY TYPE

- ★ Central Offices
- ★ Northwest Office
- ★ Northeast Office
- Area Headquarters
- District Headquarters
- Resident Engineer Offices

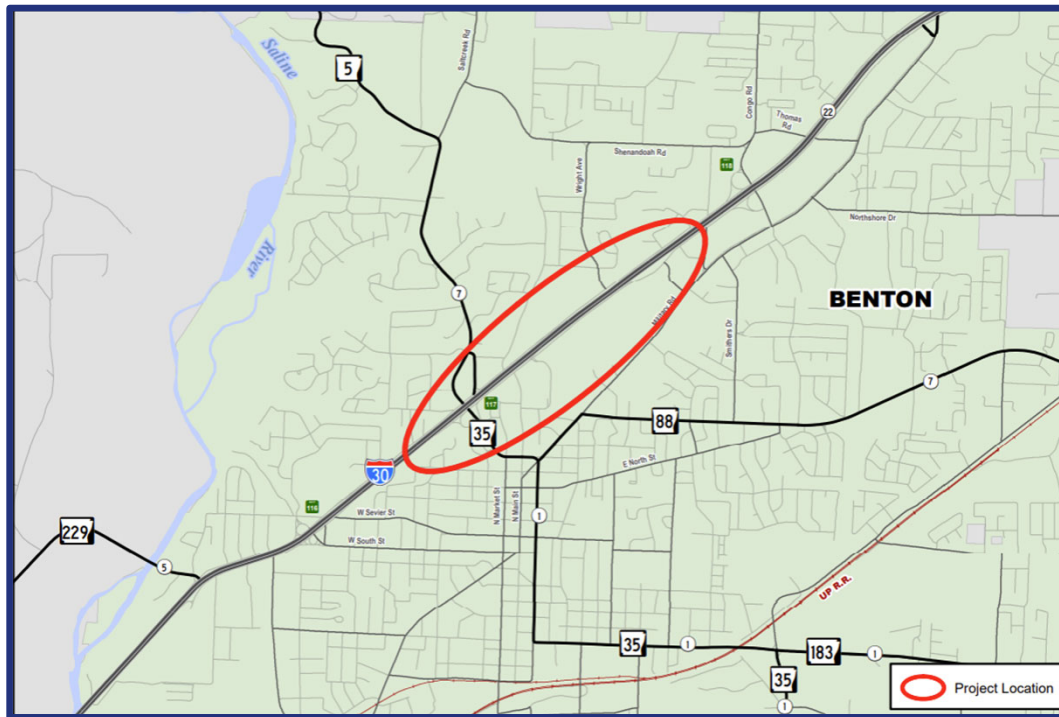


# PROJECTS UNDER CONSTRUCTION



# INTERSTATE 30

## SALINE COUNTY



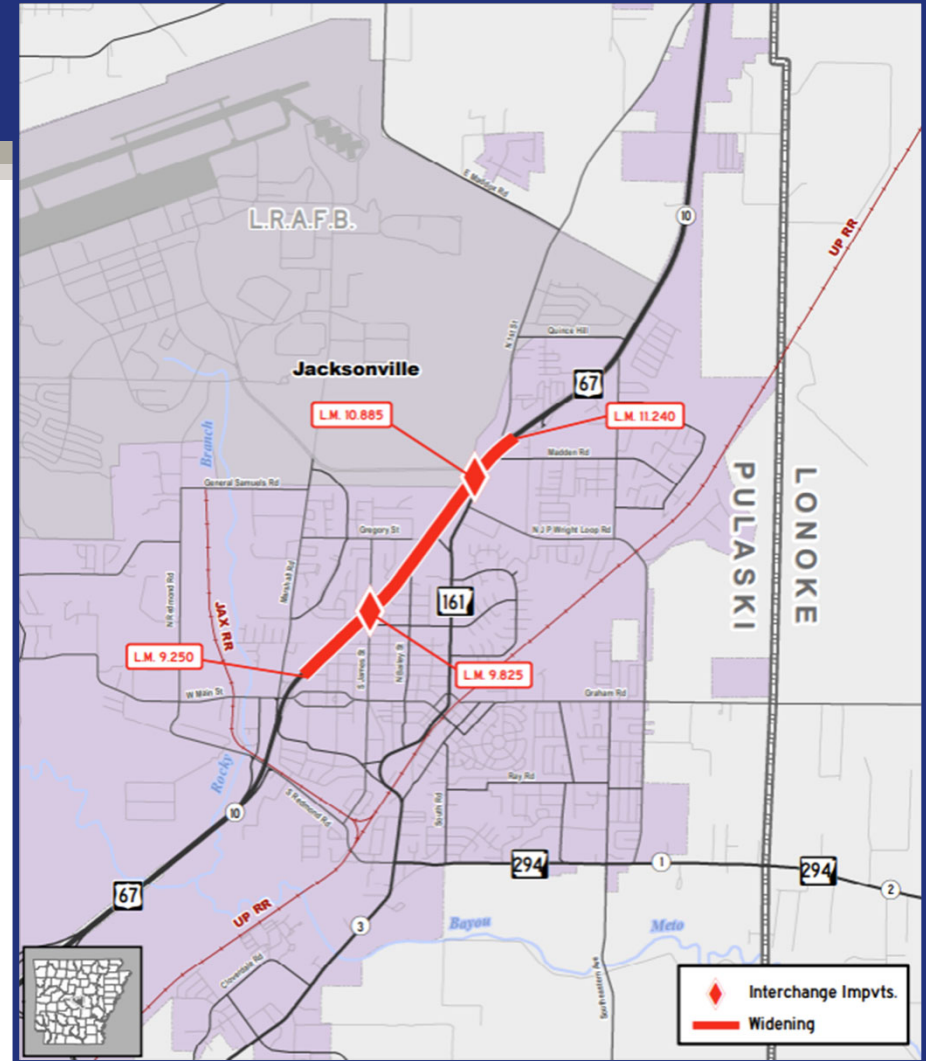
- **Objective:** Improving access along Interstate 30 frontage road and ramps
- **Awarded:** Redstone Construction Group, Inc. for \$23 million in February 2025
- **Estimated Completion Date:** Late 2027
- **Partnering:** City of Benton



# INTERSTATE 57

## PULASKI COUNTY

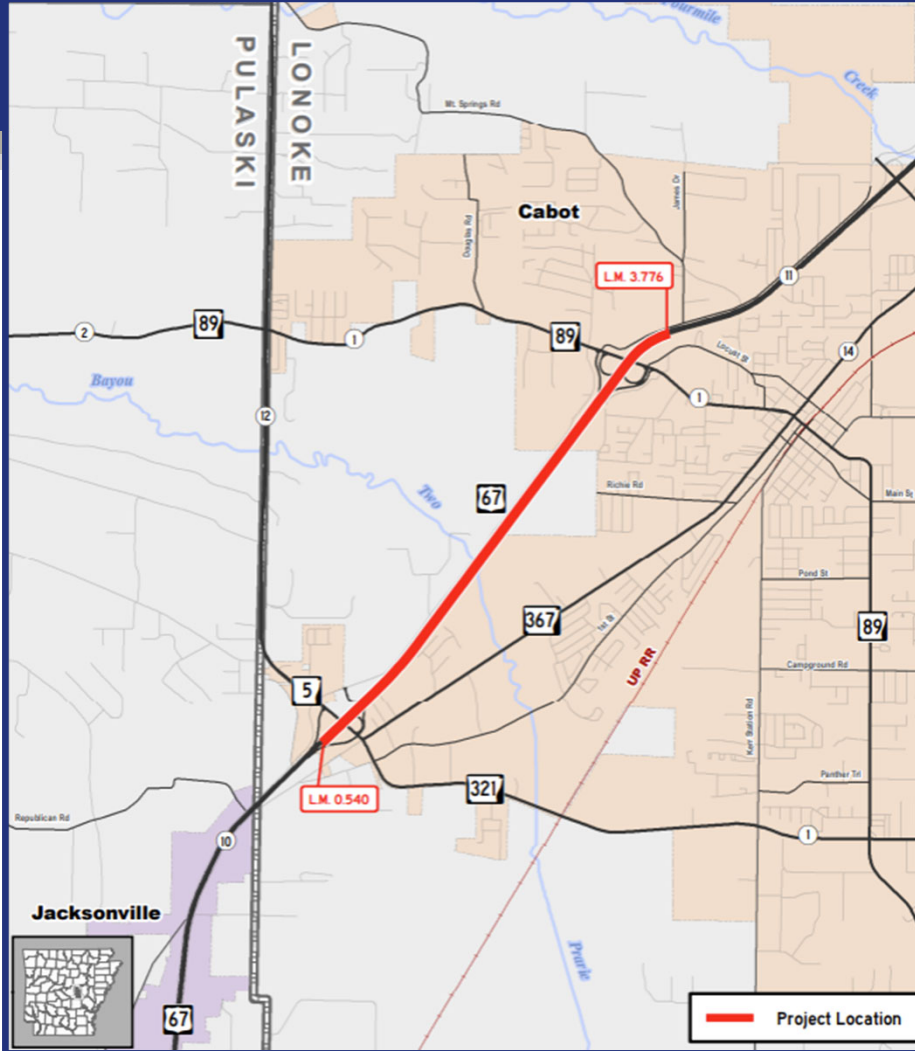
- **Objective:** Widening 2 miles of Interstate 57 to six lanes, replacing 3 bridges, and improving interchanges
- **Awarded:** Weaver-Bailey Contractors, Inc. for \$145 million in September 2022
- **Estimated Completion Date:** Late 2026





# INTERSTATE 57

## LONOKE COUNTY



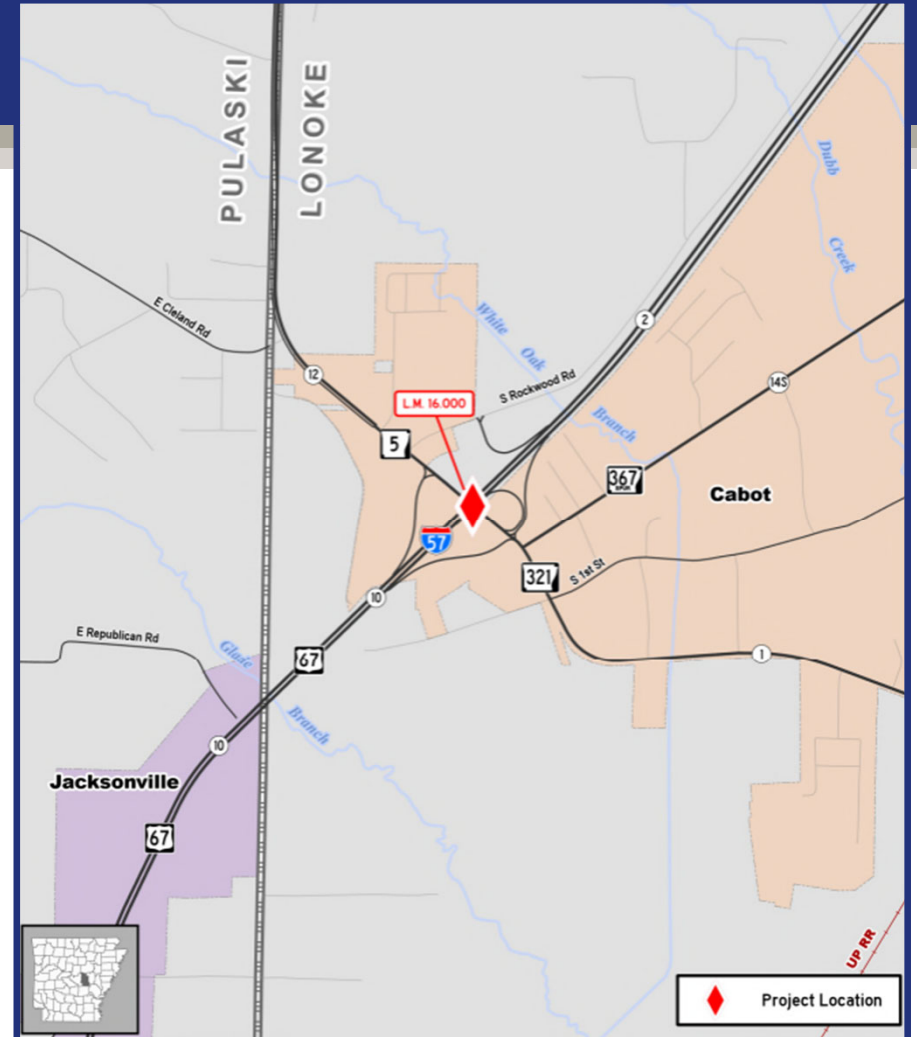
- **Objective:** Widening 4 miles of Interstate 57 to six lanes, replacing 2 bridges, and constructing a noise wall
- **Awarded:** Weaver-Bailey Contractors, Inc. for \$117 million in November 2023
- **Estimated Completion Date:** Mid-2027



# INTERSTATE 57

## LONOKE COUNTY

- **Objective:** Improving the Highway 5 and Interstate 57 interchange in Cabot
- **Awarded:** Weaver-Bailey Contractors, Inc. for \$54 million in January 2026
- **Estimated Completion Date:** Mid-2028



# FUTURE PROJECTS





# INTERSTATE 57

## LONOKE COUNTY



- **Objective:** Will improve the Highway 89 and Interstate 57 interchange in Cabot
- **Estimated Cost:** \$50-75 million
- **Shovel Ready:** Mid-2027



# HIGHWAY 10

## PULASKI COUNTY

- **Objective:** Will widen 2 miles of Highway 10 to six lanes
- **Estimated Cost:** \$40-50 million





# HIGHWAY 10

## PULASKI COUNTY

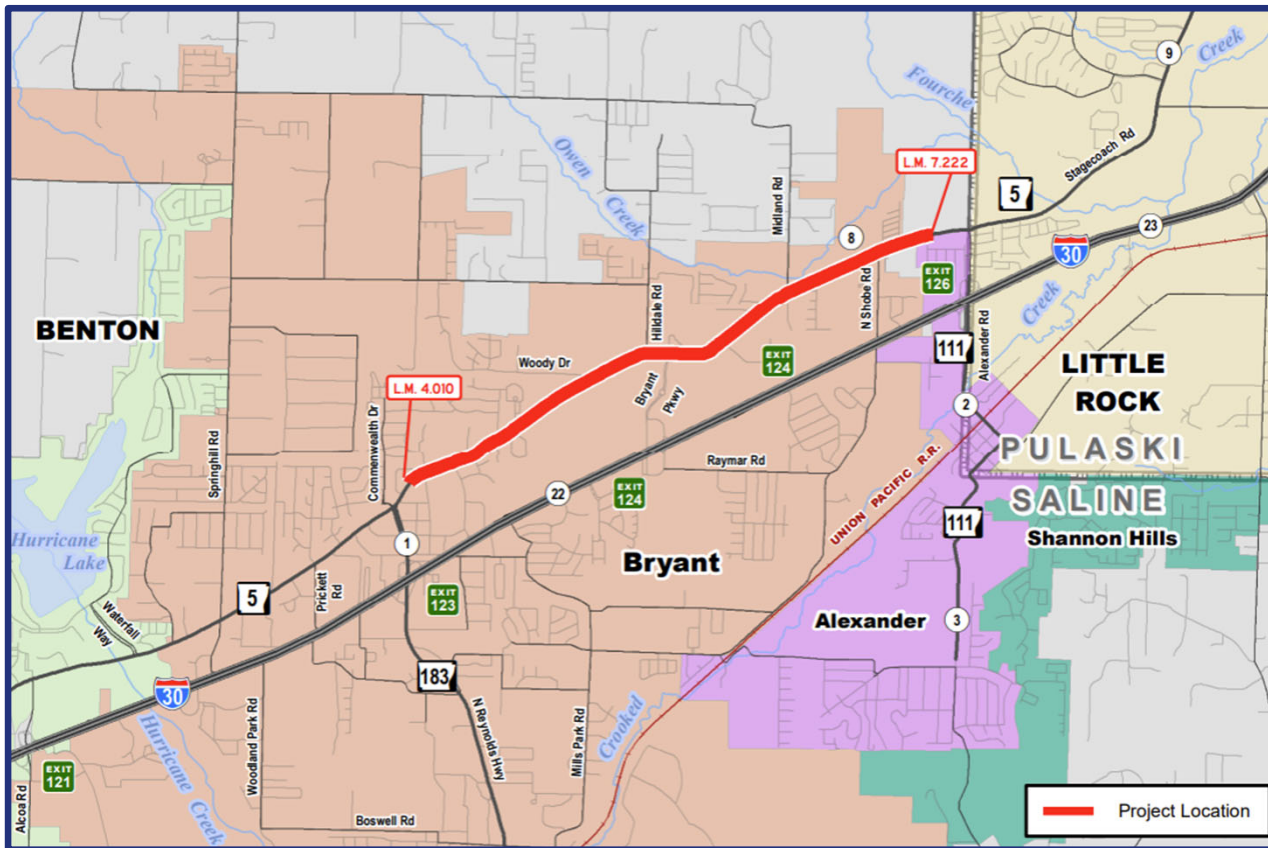
- **Objective:** Will improve intersection at Highway 10 and Taylor Loop Road
- **Estimated Cost:** \$20-30 million
- **Shovel Ready:** Late 2027





# HIGHWAY 5

## SALINE COUNTY



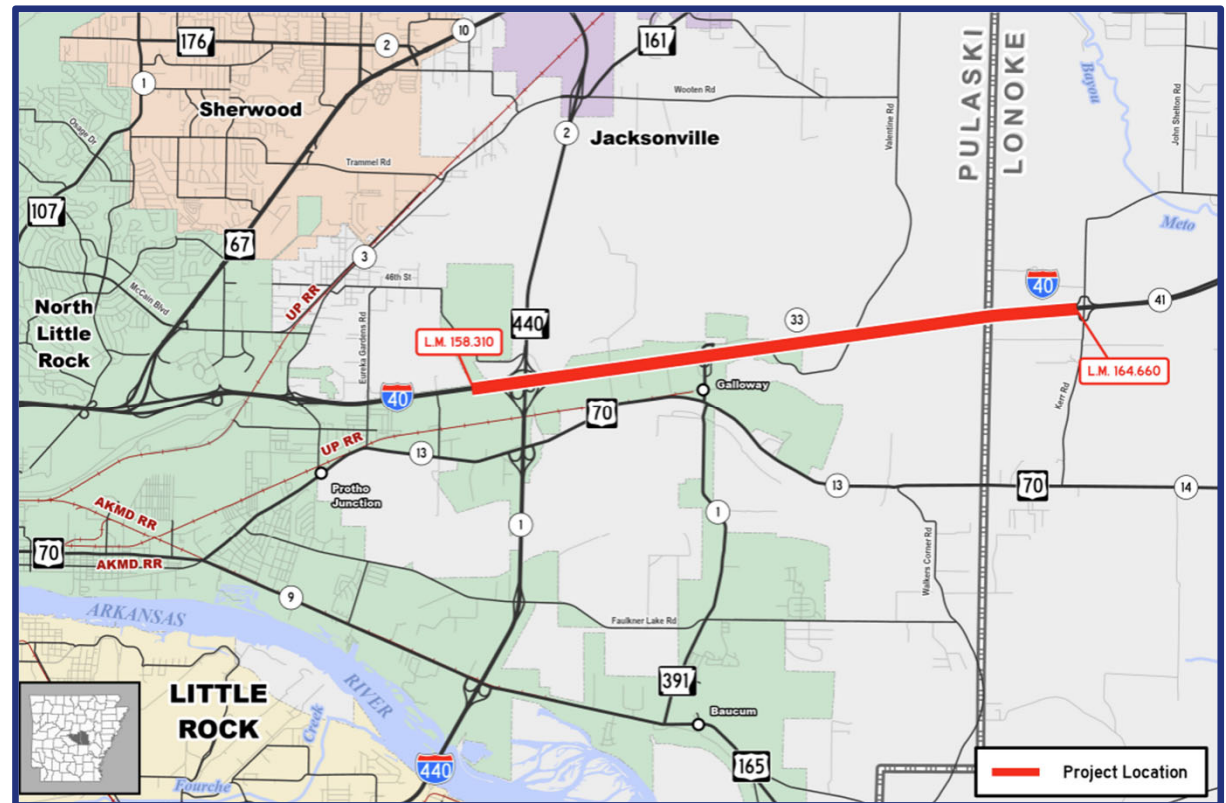
- **Objective:** Will widen 3 miles of Highway 5 to six lanes
- **Estimated Cost:** \$50-75 million
- **Shovel Ready:** Mid-2027



# INTERSTATE 40

## LONOKE & PULASKI COUNTIES

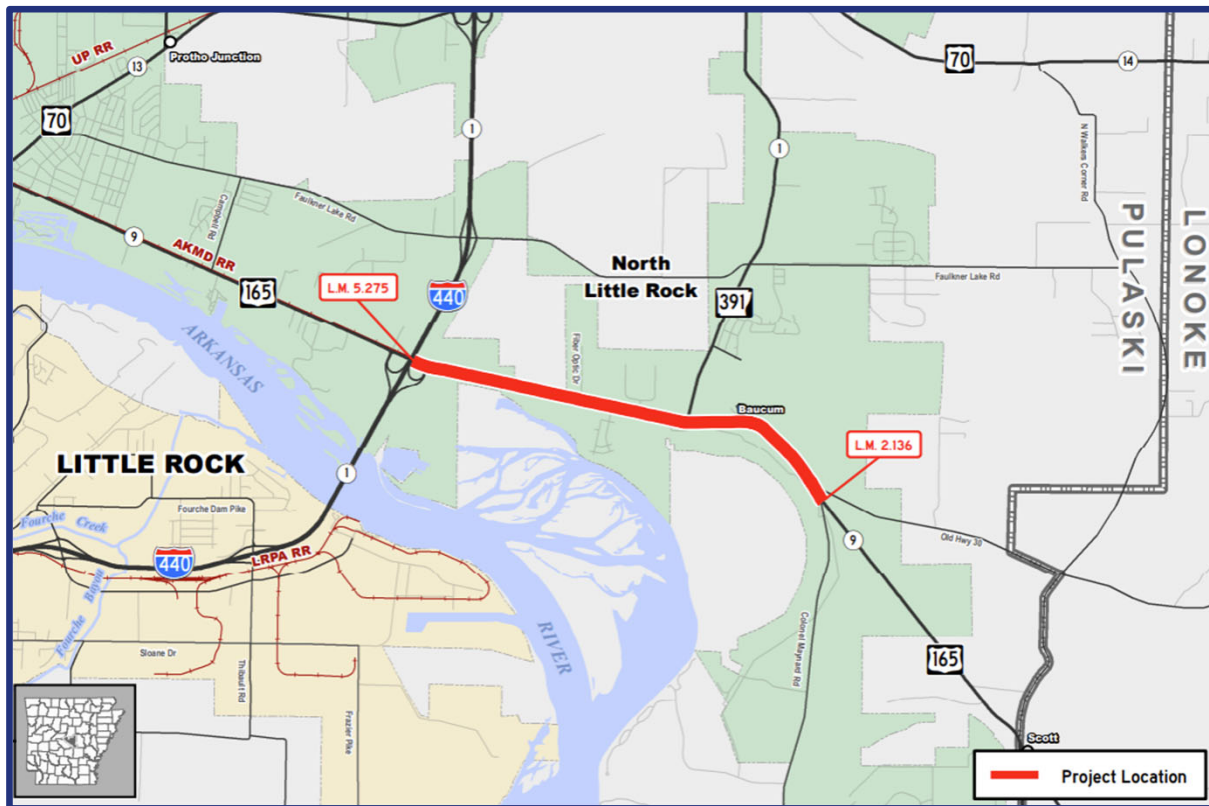
- **Objective:** Will widen more than 6 miles of Interstate 40
- **Estimated Cost:** \$75-100 million
- **Shovel Ready:** Early 2028





# HIGHWAY 165

## PULASKI COUNTY



- **Objective:** Will widen 3 miles of Highway 165 to four lanes
- **Estimated Cost:** \$20-30 million
- **Shovel Ready:** Late 2028

# PERMITS



# DISTRICT 6 PERMIT OFFICERS

## DISTRICT 6 OFFICE

LITTLE ROCK | (501) 569-2266

### **ANGELA BETTIS**

Garland, Saline & Prairie Counties

**CONTACT INFORMATION:**

(501) 569-2171  
Angela.Bettis@ardot.gov

### **KELSEY KUMPE**

Pulaski, Lonoke & Hot Spring Counties

**CONTACT INFORMATION:**

(501) 569-2267  
Kelsey.Kumpe@ardot.gov

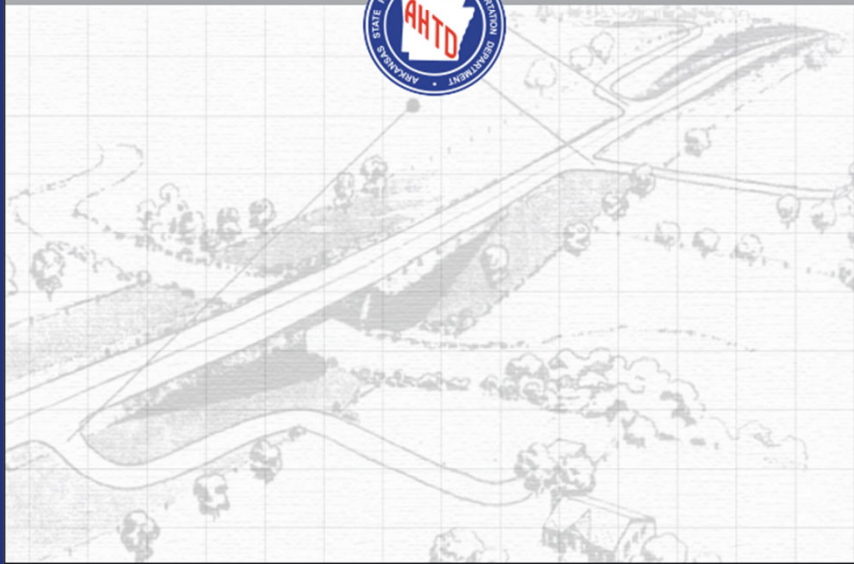
# ACCESS DRIVEWAYS



# ACCESS DRIVEWAYS



RULES FOR ACCESS DRIVEWAYS  
TO STATE HIGHWAYS  
2017



## COMMERCIAL DRIVEWAY ESSENTIALS

- **Permit required**
  - New, modified, or relocated driveways
- **Access points**
  - 1 driveway for small frontages (50ft or less)
  - Maximum of 2 driveways per property

# ACCESS DRIVEWAYS

## COMMERCIAL DRIVEWAY ESSENTIALS

RULES FOR ACCESS DRIVEWAYS  
TO STATE HIGHWAYS  
2017



- **Design standards**
  - Width minimums
    - 15ft (one-way)
    - 24ft (two-way)
    - 40ft maximum
  - Angle: 60-90 degrees
- **Paving required**
- **Uncompromised drainage**

# PROPERTY OWNER RESPONSIBILITIES

## DURING CONSTRUCTION

	Traffic control
	Permits
	Damages, safety, & signage protection

## AFTER CONSTRUCTION

	Surface maintenance
	Drainage maintenance

**FOR FULL  
ACCESS  
DRIVEWAY  
MANUAL**



# WINTER STORM FERN



# WINTER STORM FERN



90% OF HIGHWAY SYSTEM  
PRETREATED



MORE THAN 42,000 TONS OF SALT



3.7 MILLION GALLONS OF BRINE



388,000 GALLONS OF FUEL USED



MORE THAN 203,000 FIELD STAFF  
HOURS





# DEPARTMENT INITIATIVES



# ARKANSAS HIGHWAY POLICE

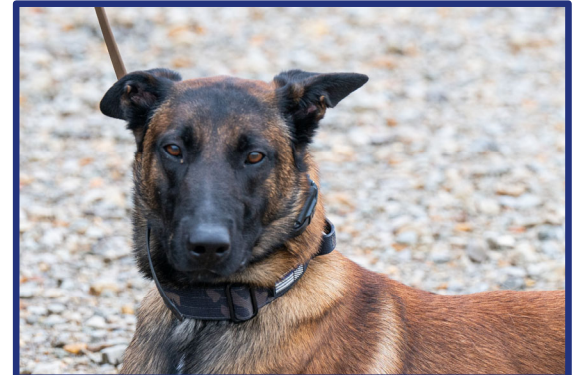
## K-9 PROGRAM



**K-9 Officer Jackie**



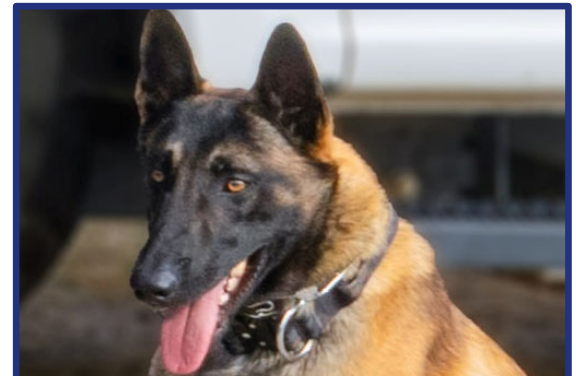
**K-9 Officer Drake**



**K-9 Officer Ace**



**K-9 Officer Mack**



**K-9 Officer YUPP**

# ARKANSAS HIGHWAY POLICE

## ILLEGAL SUBSTANCE SEIZURES

**2025**

**59,000 POUNDS OF ILLEGAL  
DRUGS SEIZED**

**\$139,000 ILLEGAL U.S.  
CURRENCY**

**\$110 MILLION STREET VALUE**



# ARKANSAS HIGHWAY POLICE

## HANDHELD DEVICE ENFORCEMENT



# HUMAN TRAFFICKING PREVENTION

## DEPARTMENTAL EFFORTS



**Training & Education**



**Information & Outreach**



**Partnerships & Collaboration**



# STREET SMART

## SAFETY CAMPAIGN



Scan the QR code  
to view or request  
materials





# *DISTRACTED DRIVING* IS NO GOOD.

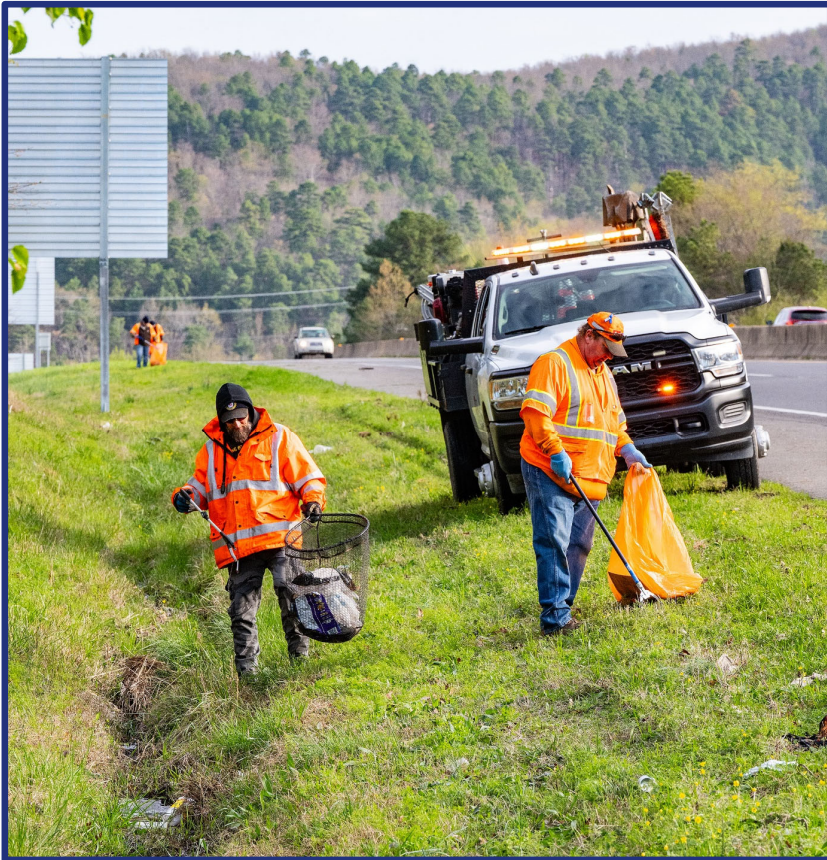
Driver Safety Basics



# LITTER LETTERS



# SPRING CLEAN-UP WEEK



14,000+ bags



2,000+ employees



# ADOPT-A-HIGHWAY PROGRAM



Visit [ardot.gov](https://ardot.gov) or scan here to learn more, sign up as a volunteer, or to request a speaker



## Time to Decompose:



**Bottles:** 450 Years



**Cans:** 200 Years



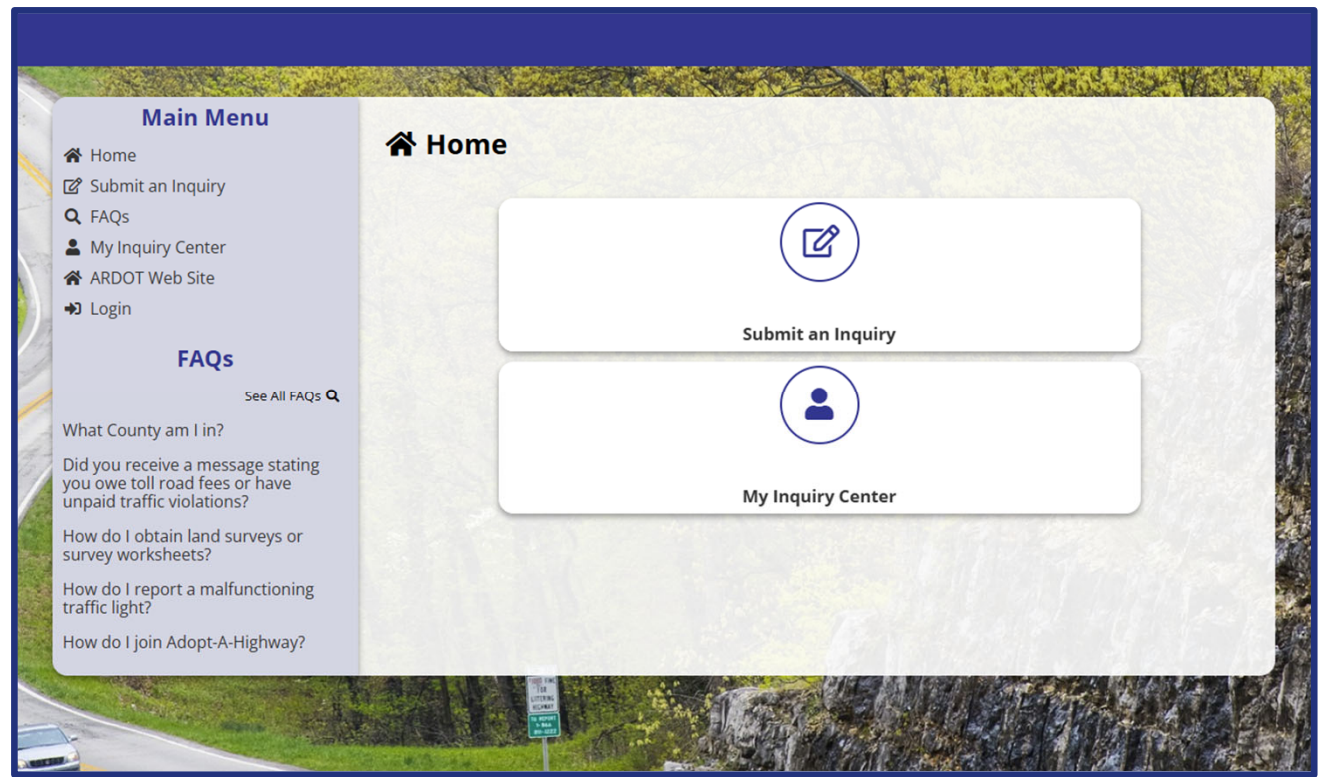


# ARDOT Launches New Adopt-A-Highway Interactive Map

Interested in joining the Adopt-A-Highway program? Click below to get started.

 [Sign Up!](#)

# ASK ARDOT





# PROJECT DASHBOARD

**AR DOT**  
ARKANSAS DEPARTMENT OF TRANSPORTATION

CONSTRUCTION PROJECT MAP

PROJECT MAP | PROJECT DETAILS | METRICS

FILTER BY DISTRICT

CURRENT BOUNDARY LINE: COUNTY LINE

SEARCH BY PROJECT NAME

PROJECTS OVER \$10M

MAP FILTERS

- JOB NUMBER: All
- COUNTY: All
- ARDOT DISTRICT: All
- ROUTE/HIGHWAY: All
- PROJECT TYPE: All
- AWARD YEAR: All
- STATE SENATE DISTRICT: All
- STATE HOUSE DISTRICT: All

CLEAR SELECTIONS

ASK AR DOT

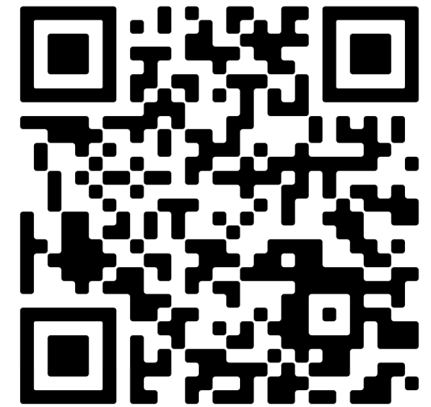
PROJECT DETAILS

SELECT A PROJECT ON THE MAP FOR MORE INFORMATION

ACTIVE  
PENDING  
COMPLETE

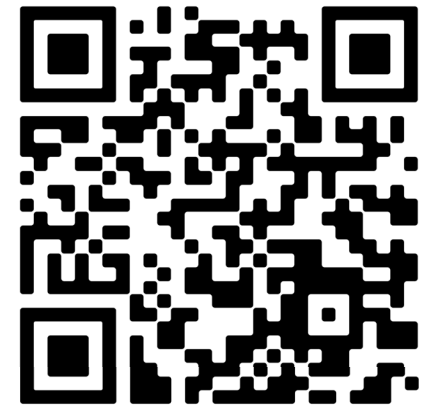
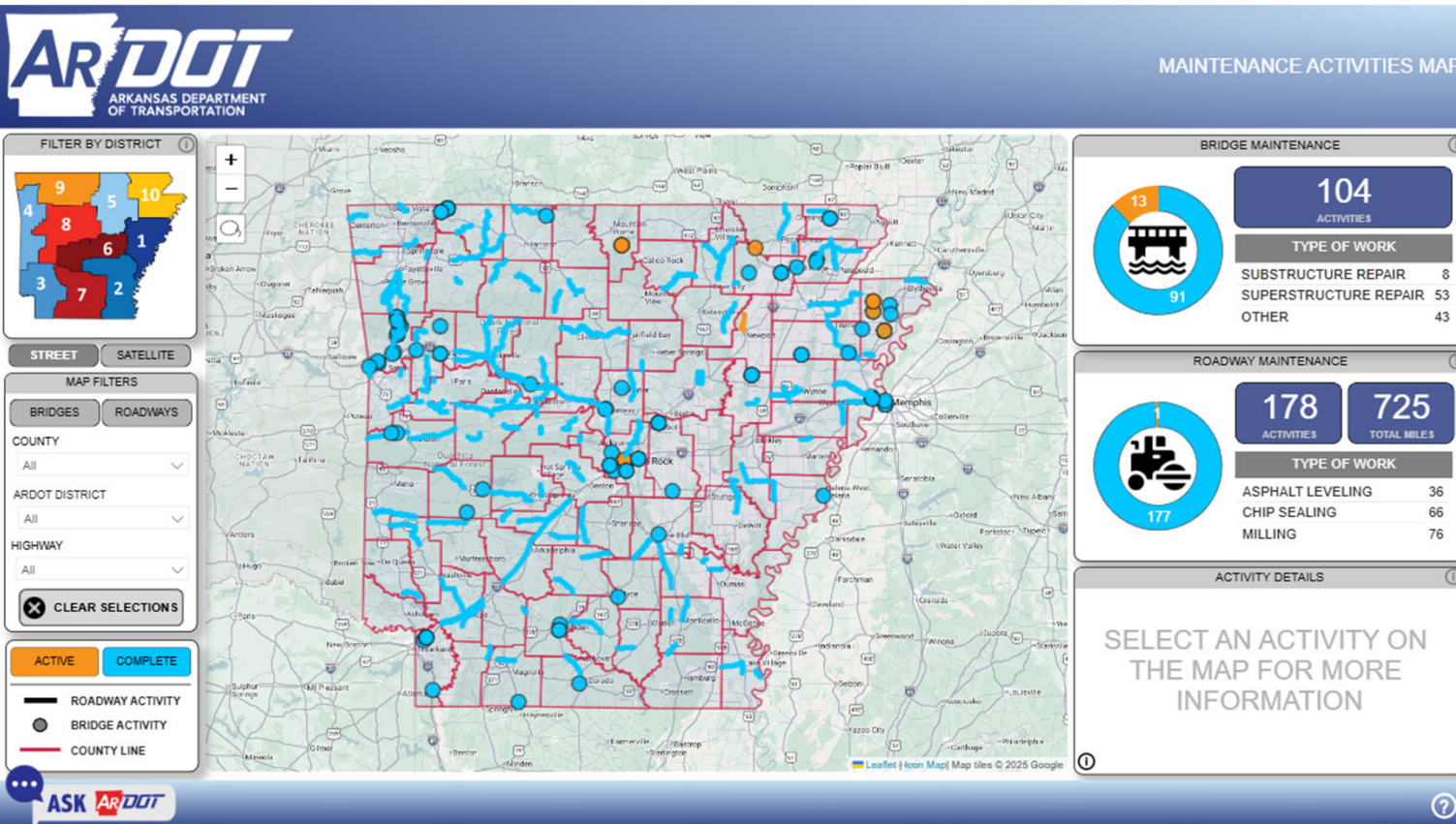
ROADWAY PROJECT  
STRUCTURE, INTERCHANGE, INTERSECTION  
COUNTY LINE

Leaflet | Icon Map | Developed by Garver, LLC | Map tiles © 2025 Google



To access the Project Dashboard, go to [ardot.gov/project-dashboard](https://ardot.gov/project-dashboard) or use this QR code

# MAINTENANCE DASHBOARD



To access the Project Dashboard, go to [ardot.gov/maintenance-dashboard](https://ardot.gov/maintenance-dashboard) or use this QR code



# HUNTER LAKE

**District 6 Engineer**

**Phone:** 501-569-2266

**Email:** [William.Lake@ardot.gov](mailto:William.Lake@ardot.gov)



# BOMA CE & TRADE SHOW

HUNTER LAKE | DISTRICT 6 ENGINEER

APRIL 16, 2026

