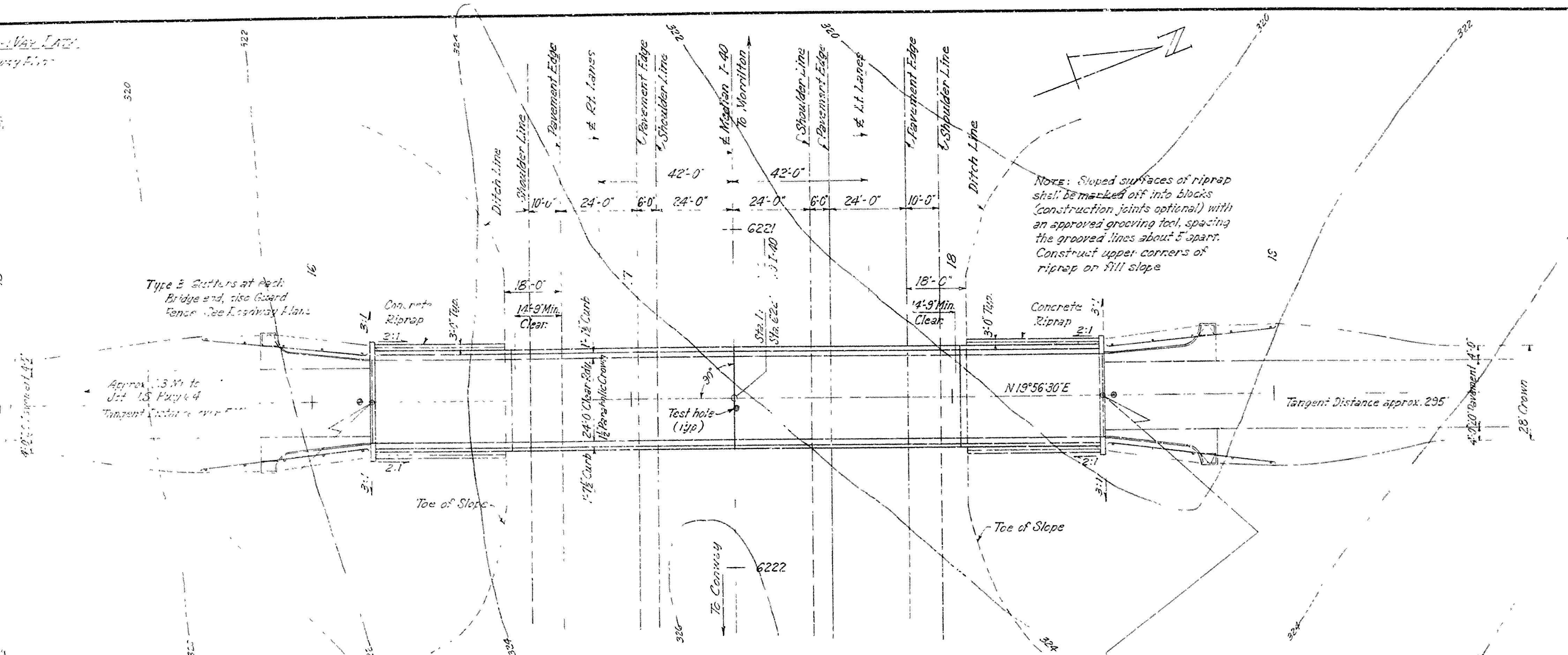
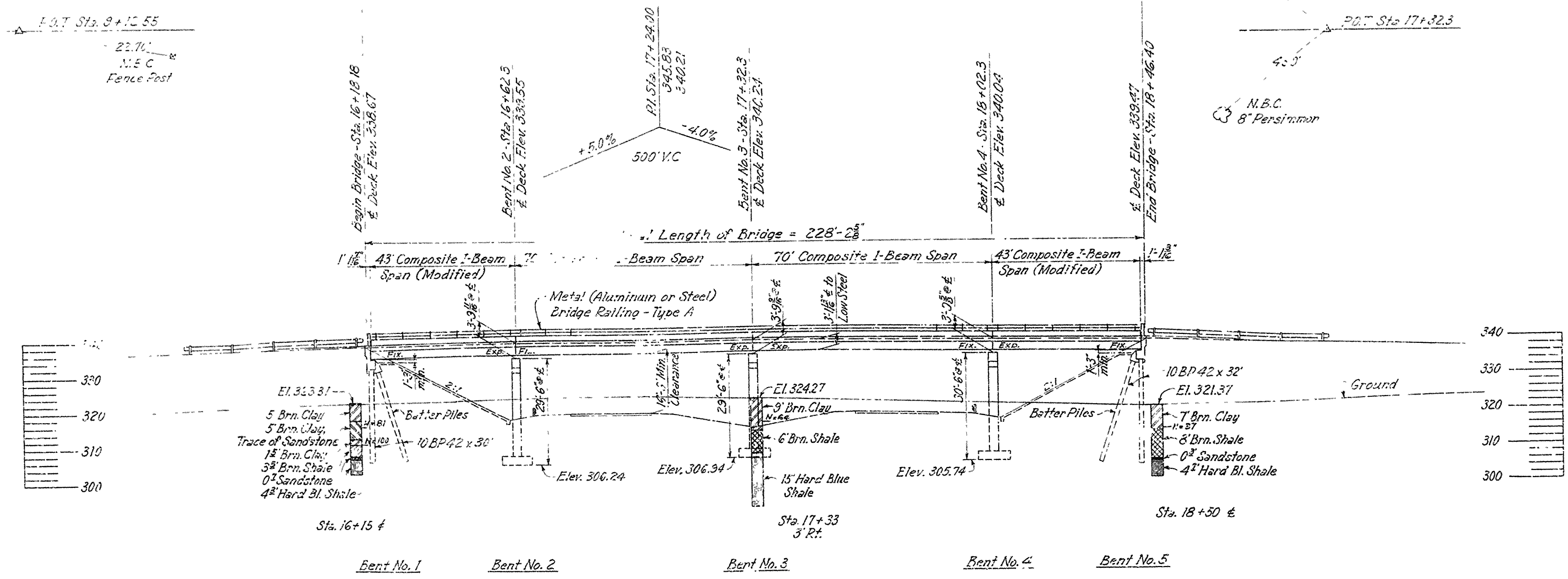


| FED. ROAD NO. | STATE | FED. AID PROJ. NO. | FISCAL YEAR | SHEET NO. | TOTAL SHEETS |
|---------------|-------|--------------------|-------------|-----------|--------------|
| 6             | ARK.  | 1-20-306/118       |             | 53        | 271          |
| JOB NO.       |       | 8464               |             |           |              |

Light-Gravel Lay.  
On Gravel Sub.



PLAN



ELEVATION

Maximum Foundation Pressure (Calculated): 4.0 Tons/sq. ft. (Group III)

B.M. - N.I.R. 12" Elm. 4. Sta. 8+21  
Elev. 205.22

GENERAL NOTES:

All concrete to be poured in the dry. Exposed surfaces to be chamfered 1/4" unless otherwise noted.

Rock excavations shall be made to neat lines of concrete footings, a minimum of 1'-0" into material designated as hard blue shale. Care shall be exercised to avoid scattering of rock faces by excessive blasting. Concrete in footings shall be poured directly against excavated surfaces of rock.

In general, all construction joints in bents shall be horizontal and shall be provided with keys not less than 11" high covering the middle third of width dimensions.

Provide roadway drains on both sides of roadway approximately 12" from bridge ends.

All piling shall be 10" BP 42# and shall be driven with an approved air, steam, or diesel hammer to a minimum capacity of 50 tons per pile and into the material designated as hard shale on the boring logs. Lengths of pile shown are for estimating quantities only. Order lengths shown; cut-off or built-up, if necessary, shall be paid for in accordance with the Standard Specifications.

Piles in End Bents shall be driven after embankment is in place.

For Riprap Details see Dwg. No. 13914

For Details of End Bents see Dwg. No. 13356

For Details of Intermediate Bents, see Dwg. No. 13357

For Details of Composite I-Beam Spans see Dwg. No. 149908 and 13946

SPECIFICATIONS: Arkansas State Highway Commission Standard Specifications for Highway Construction, Edition of 1959, and designated Special Provisions.

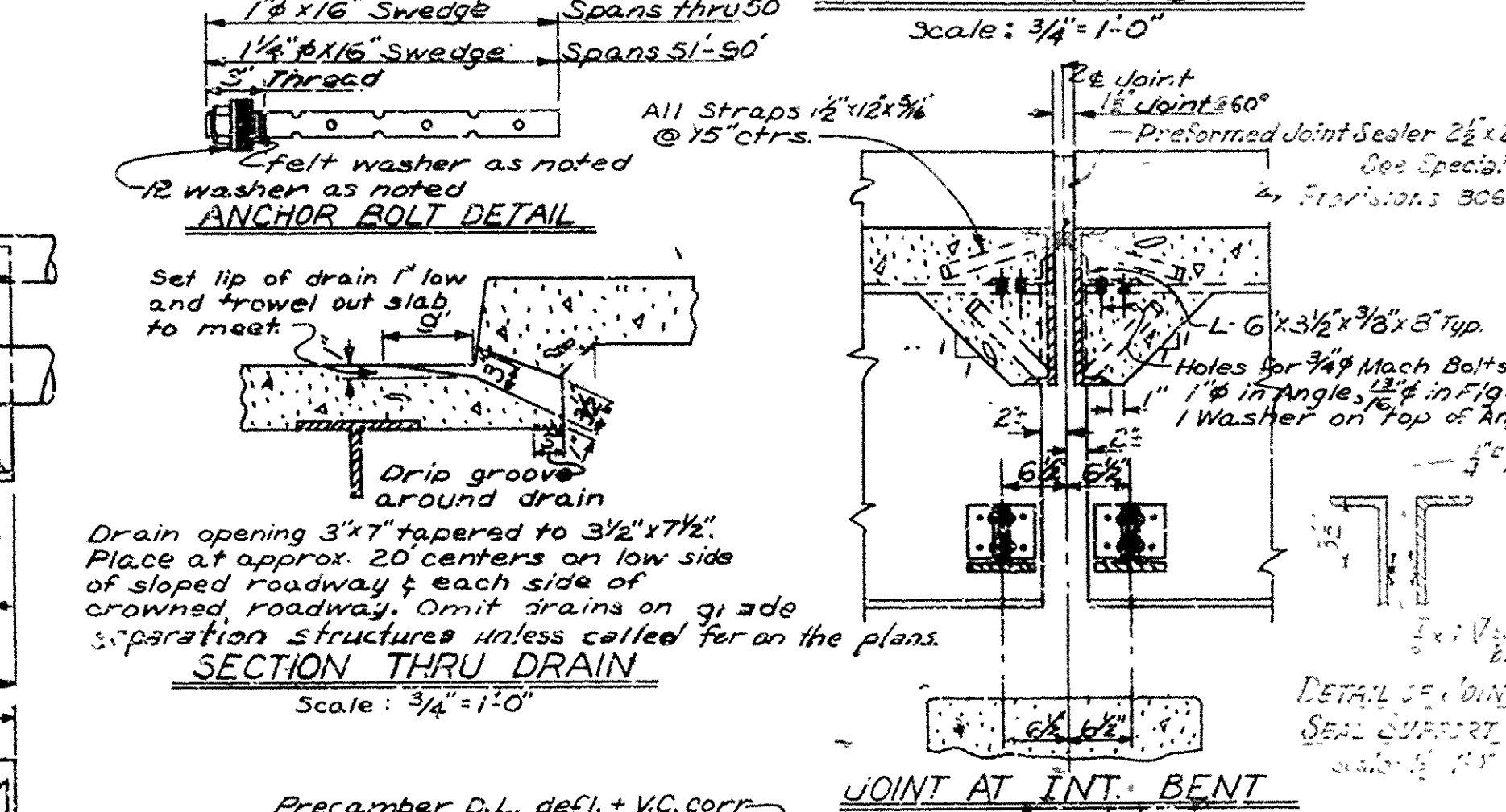
| DESIGN SPECIFICATIONS:  | AASHTO | 1961 |
|-------------------------|--------|------|
| Live Loading:           | H-15   |      |
| Unit Stresses:          |        |      |
| Class A Concrete (n=15) | 840    | psi  |
| Class S Concrete (n=10) | 1,200  | psi  |
| Reinforcing Steel       | 20,000 | psi  |
| Structural Steel (A36)  | 20,000 | psi  |

LAYOUT OF BRIDGE  
MENIFEE INTERCHANGE  
MENIFEE - CONWAY  
CONWAY COUNTY  
INT. ROUTE 40 SEC. 3  
ARKANSAS STATE HIGHWAY COMMISSION  
LITTLE ROCK, ARK.

DRAWN BY: AW DATE: 6-27-57  
TRACED BY: AW DATE: 6-27-57  
CHECKED BY: AW DATE: 6-27-57  
SCALE: 1" = 20'  
BRIDGE NO. 3951 DRAWING NO. 13355

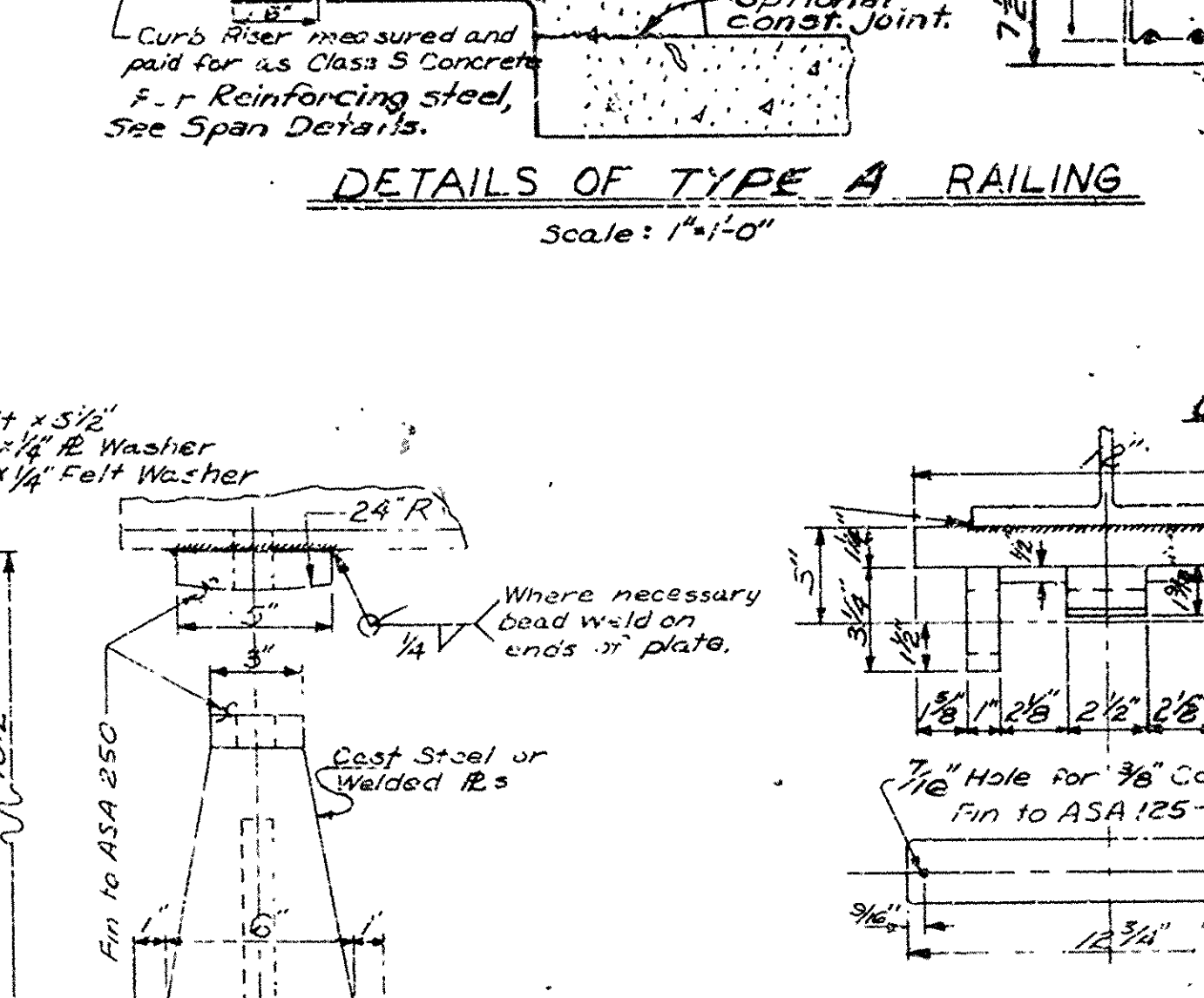


All concrete to be Class S. All exposed corners to be chamfered 3/4" unless otherwise noted.  
Field connections to be riveted or bolted with high strength bolts.  
Rivets: 3/4", Open holes 5/8" except where noted otherwise.  
Structural shapes of equal or greater strength may be substituted for shapes shown, but payment will be made on the basis of shapes shown or those actually used, whichever is less.  
Welding shall conform to the American Welding Society Standard Specifications for Welded Highway and Railway Bridges, current edition.  
Shop Paint: All structural steel except surfaces in contact with concrete shall be given one coat of red lead and raw linseed oil before shipment.  
Field Paint: First coat - red lead tinted with lamp black. Second coat - aluminum paint.  
All metal bending and roadway expansion devices to be paid for as "Structural Steel in Beam Spans." Bearings shall be finally seated in accordance with Sec. 805.56, including alternate of the 3rd step. This work and material are to be considered as subsidiary to the item "Structural Steel in Beam Spans" and will not be paid for directly.  
This work shall be checked and approved by the Engineer of design only. Shop drawings shall be made in accordance with the Specifications, submitted and approved secured before fabrication is begun.  
All Steel shall be ASTM A-36 unless otherwise noted  
Anchor bolts shall be galvanized to conform to ASTM Specification, Designation A 153.

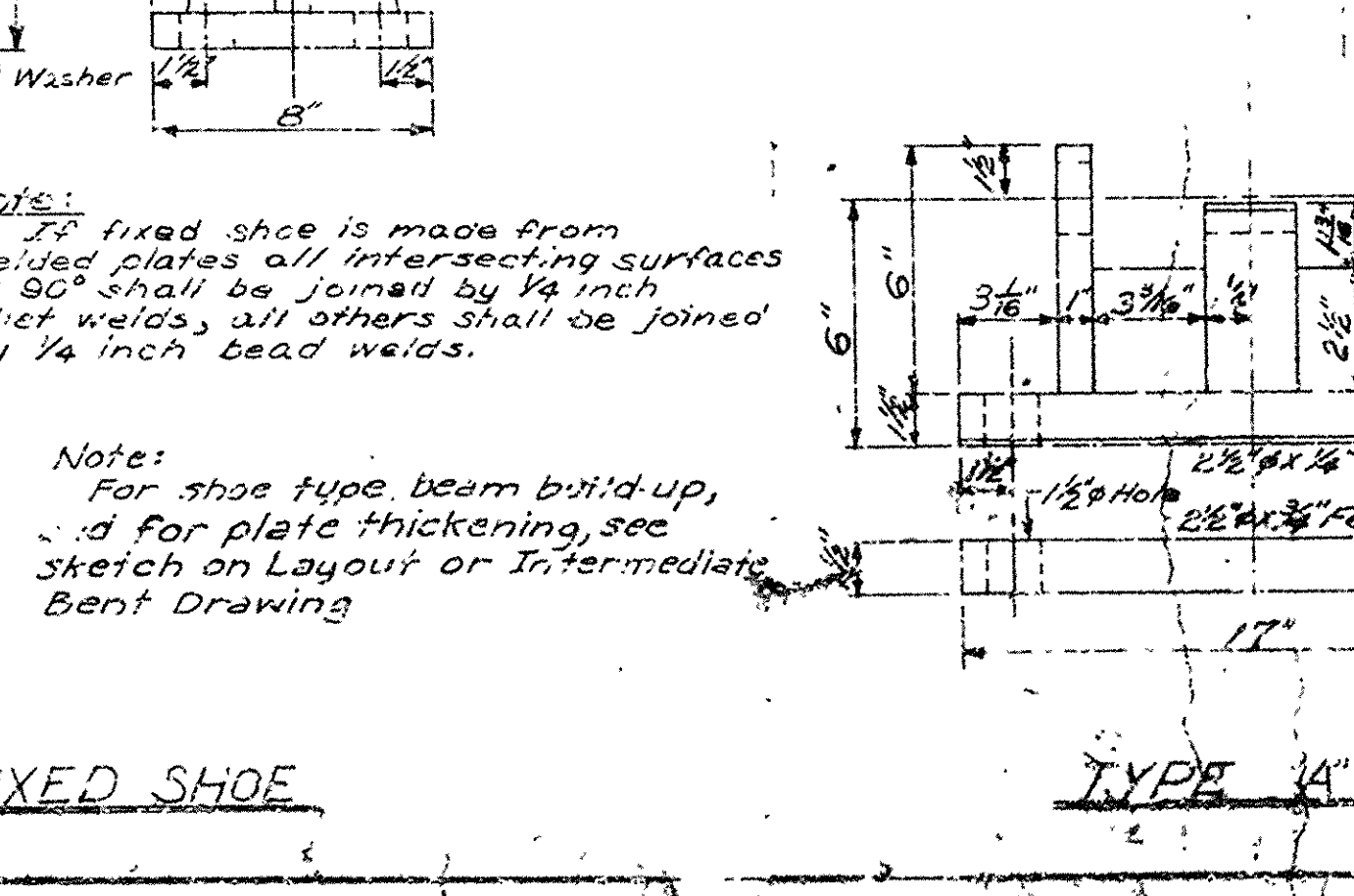


1"  $\phi$  x 16 Swedge Spans thru 50  
1 1/4"  $\phi$  x 16 Swedge Spans 51'-90'

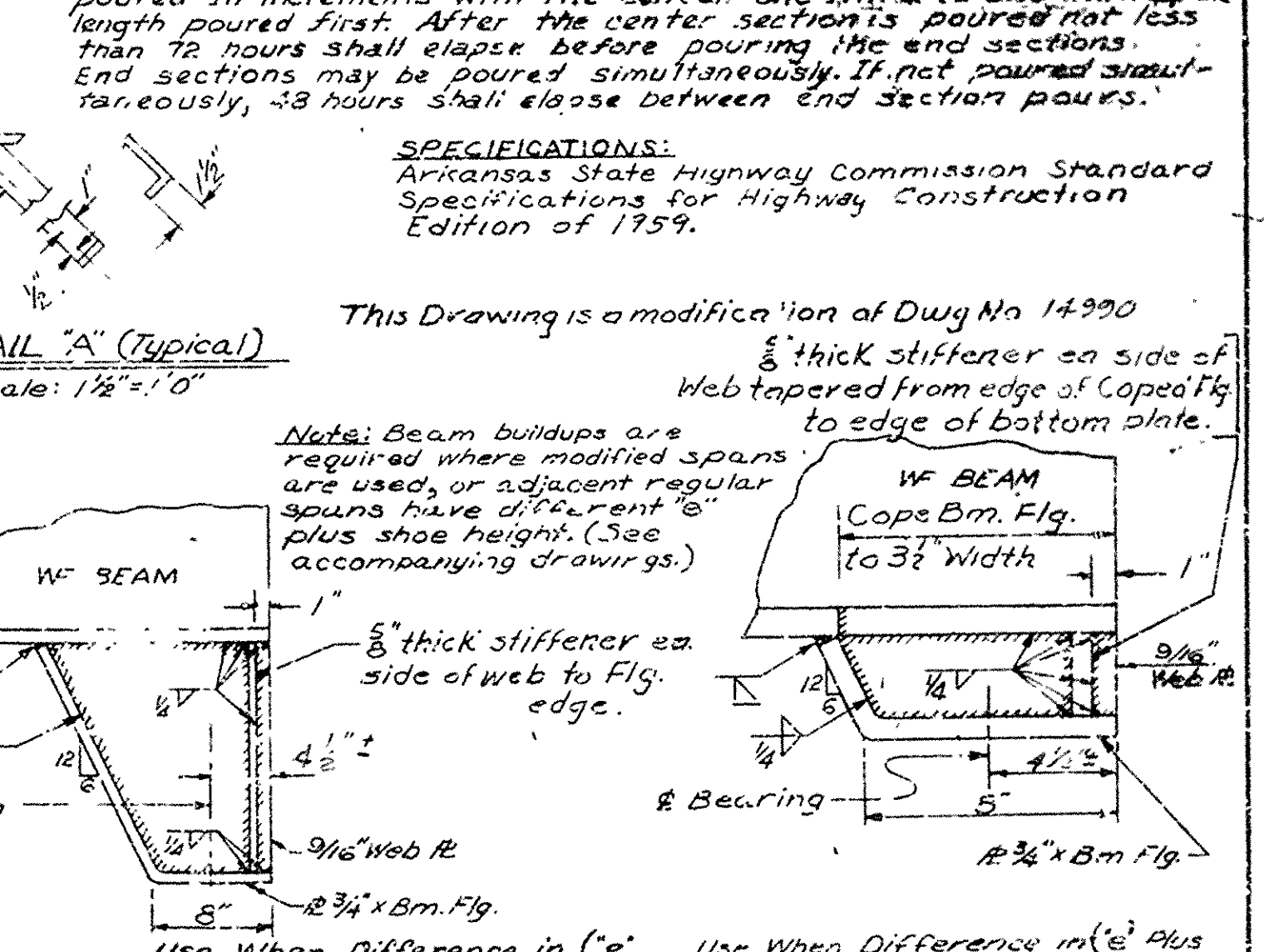
Scale: 3/4" = 1'-0"



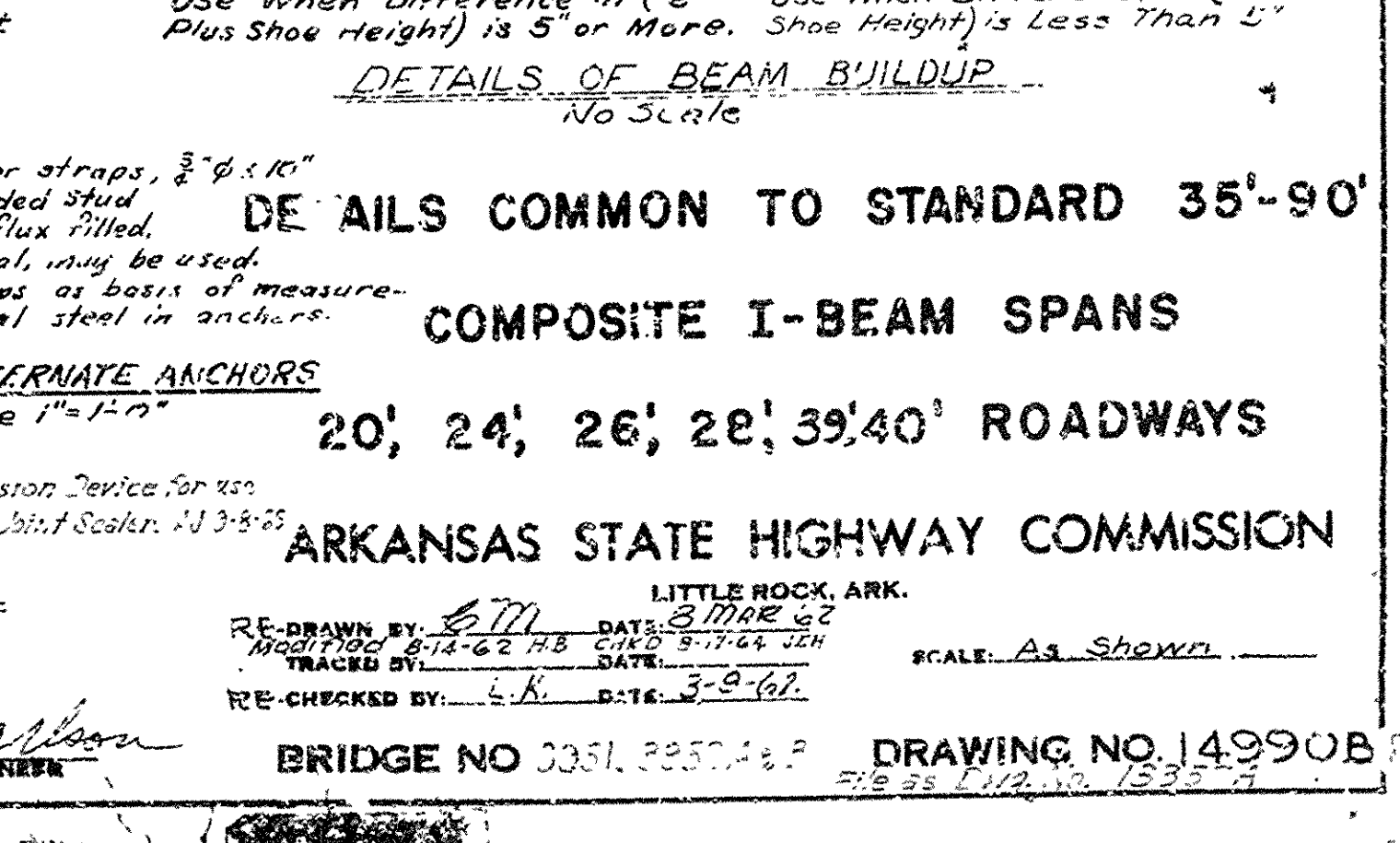
DETAILS OF TYPE A RAILING



TYPE "A" FIXED SHOE



DETAIL "A" (Typical)



DETAILS COMMON TO STANDARD 35°-90°

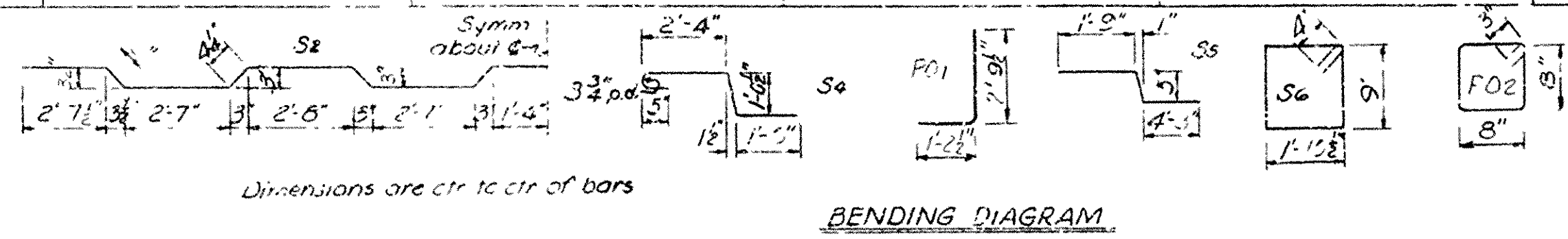
20', 24', 26', 28', 39', 40' ROADWAYS

RE-DRAWN BY: *BTM* DATE: *3 MAR 62* LITTLE ROCK, ARK.

BRIDGE NO 0051, 2250 A.P. DRAWING NO. 14990B  
File as D12, No. 1335-A



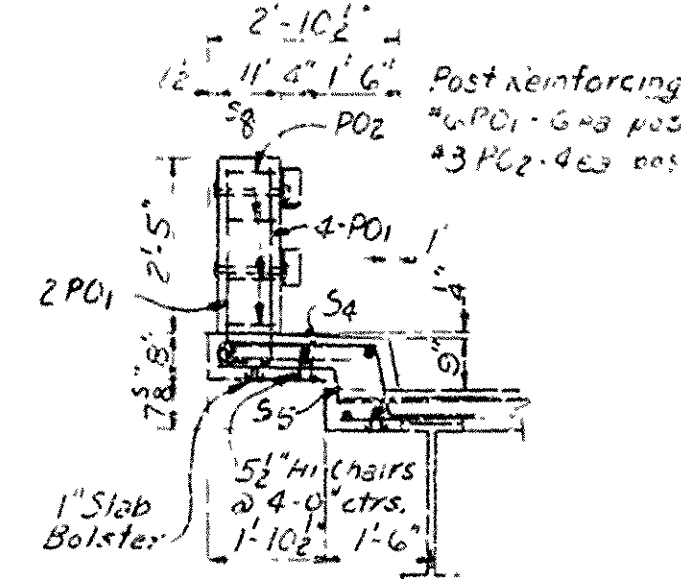
Maximum thickness of part under  $\frac{3}{4}$ " -  $\frac{1}{4}$ "  
 " " " "  $\frac{3}{4}$ " to  $1\frac{1}{2}$ " =  $\frac{5}{16}$ "

[illegible]

BENDING DIAGRAM

‡ For Type B Bridge 20

For details see  
Frige Rail-see Dns 14993



CURB SECTION - Type B Profile

| A      |             | TOP OF BEAM |             |           |                      | INTERIOR BEAM         |           |              |           | POST SPACING         |                       |                     | VARIABLES OF SHEAR CONNECTOR SPACING |           |      |        |                                      |       |       |     |         |     |    |     |     |   |     |   |     |   |
|--------|-------------|-------------|-------------|-----------|----------------------|-----------------------|-----------|--------------|-----------|----------------------|-----------------------|---------------------|--------------------------------------|-----------|------|--------|--------------------------------------|-------|-------|-----|---------|-----|----|-----|-----|---|-----|---|-----|---|
| VOL. % | SIZE        | REIN. SL.   | COVER & SL. | e         | DEAD LOAD DEFLECTION |                       | BEAM SIZE | COVER & SIZE | e         | DEAD LOAD DEFLECTION |                       | (MOD. RLY. SP. IN.) | POST SPACING                         |           |      | f      | VARIABLES OF SHEAR CONNECTOR SPACING |       |       |     |         |     |    |     |     |   |     |   |     |   |
|        |             |             |             |           | WITH CONSTR. JOINT   | WITHOUT CONSTR. JOINT |           |              |           | WITH CONSTR. JOINT   | WITHOUT CONSTR. JOINT |                     | a                                    | b         | c    |        | g                                    | h     | i     | j   | k       | l   | m  | n   | P   |   |     |   |     |   |
| 1      | 3/4" x 1/4" | 3/4" x 1/4" | 3/4" x 1/4" | 2-24"     | 2"                   | 1/8"                  | 30"x48"   | 3/4" x 1/4"  | 2-11 1/2" | 1/8"                 | 1/8"                  | 30"x48"             | 3/4" x 1/4"                          | 2-11 1/2" | 1/8" | 1/8"   | 40"x17-6"                            | 8'-0" | 8'-0" | 3   | 10 1/2" | 8   | 7" | 9   | 10" | 9 | 12" | 4 | 16" | 8 |
| 2      | 3/4" x 1/4" | 3/4" x 1/4" | 3/4" x 1/4" | 2-11 1/2" | 2 1/2"               | 1/8"                  | 30"x48"   | 3/4" x 1/4"  | 2-11 1/2" | 1/8"                 | 1/8"                  | 40"x17-6"           | 7'-3"                                | 7'-6"     | 7    | 1 1/2" | 8                                    | 11"   | 7     | 14" | 6       | 18" | 5  | 21" | 9   |   |     |   |     |   |
|        |             |             |             |           |                      |                       |           |              |           |                      |                       |                     |                                      |           |      |        |                                      |       |       |     |         |     |    |     |     |   |     |   |     |   |
|        |             |             |             |           |                      |                       |           |              |           |                      |                       |                     |                                      |           |      |        |                                      |       |       |     |         |     |    |     |     |   |     |   |     |   |
|        |             |             |             |           |                      |                       |           |              |           |                      |                       |                     |                                      |           |      |        |                                      |       |       |     |         |     |    |     |     |   |     |   |     |   |
|        |             |             |             |           |                      |                       |           |              |           |                      |                       |                     |                                      |           |      |        |                                      |       |       |     |         |     |    |     |     |   |     |   |     |   |
|        |             |             |             |           |                      |                       |           |              |           |                      |                       |                     |                                      |           |      |        |                                      |       |       |     |         |     |    |     |     |   |     |   |     |   |
|        |             |             |             |           |                      |                       |           |              |           |                      |                       |                     |                                      |           |      |        |                                      |       |       |     |         |     |    |     |     |   |     |   |     |   |
|        |             |             |             |           |                      |                       |           |              |           |                      |                       |                     |                                      |           |      |        |                                      |       |       |     |         |     |    |     |     |   |     |   |     |   |
|        |             |             |             |           |                      |                       |           |              |           |                      |                       |                     |                                      |           |      |        |                                      |       |       |     |         |     |    |     |     |   |     |   |     |   |
|        |             |             |             |           |                      |                       |           |              |           |                      |                       |                     |                                      |           |      |        |                                      |       |       |     |         |     |    |     |     |   |     |   |     |   |
|        |             |             |             |           |                      |                       |           |              |           |                      |                       |                     |                                      |           |      |        |                                      |       |       |     |         |     |    |     |     |   |     |   |     |   |
|        |             |             |             |           |                      |                       |           |              |           |                      |                       |                     |                                      |           |      |        |                                      |       |       |     |         |     |    |     |     |   |     |   |     |   |
|        |             |             |             |           |                      |                       |           |              |           |                      |                       |                     |                                      |           |      |        |                                      |       |       |     |         |     |    |     |     |   |     |   |     |   |
|        |             |             |             |           |                      |                       |           |              |           |                      |                       |                     |                                      |           |      |        |                                      |       |       |     |         |     |    |     |     |   |     |   |     |   |
|        |             |             |             |           |                      |                       |           |              |           |                      |                       |                     |                                      |           |      |        |                                      |       |       |     |         |     |    |     |     |   |     |   |     |   |
|        |             |             |             |           |                      |                       |           |              |           |                      |                       |                     |                                      |           |      |        |                                      |       |       |     |         |     |    |     |     |   |     |   |     |   |
|        |             |             |             |           |                      |                       |           |              |           |                      |                       |                     |                                      |           |      |        |                                      |       |       |     |         |     |    |     |     |   |     |   |     |   |
|        |             |             |             |           |                      |                       |           |              |           |                      |                       |                     |                                      |           |      |        |                                      |       |       |     |         |     |    |     |     |   |     |   |     |   |
|        |             |             |             |           |                      |                       |           |              |           |                      |                       |                     |                                      |           |      |        |                                      |       |       |     |         |     |    |     |     |   |     |   |     |   |
|        |             |             |             |           |                      |                       |           |              |           |                      |                       |                     |                                      |           |      |        |                                      |       |       |     |         |     |    |     |     |   |     |   |     |   |
|        |             |             |             |           |                      |                       |           |              |           |                      |                       |                     |                                      |           |      |        |                                      |       |       |     |         |     |    |     |     |   |     |   |     |   |
|        |             |             |             |           |                      |                       |           |              |           |                      |                       |                     |                                      |           |      |        |                                      |       |       |     |         |     |    |     |     |   |     |   |     |   |
|        |             |             |             |           |                      |                       |           |              |           |                      |                       |                     |                                      |           |      |        |                                      |       |       |     |         |     |    |     |     |   |     |   |     |   |
|        |             |             |             |           |                      |                       |           |              |           |                      |                       |                     |                                      |           |      |        |                                      |       |       |     |         |     |    |     |     |   |     |   |     |   |
|        |             |             |             |           |                      |                       |           |              |           |                      |                       |                     |                                      |           |      |        |                                      |       |       |     |         |     |    |     |     |   |     |   |     |   |
|        |             |             |             |           |                      |                       |           |              |           |                      |                       |                     |                                      |           |      |        |                                      |       |       |     |         |     |    |     |     |   |     |   |     |   |
|        |             |             |             |           |                      |                       |           |              |           |                      |                       |                     |                                      |           |      |        |                                      |       |       |     |         |     |    |     |     |   |     |   |     |   |
|        |             |             |             |           |                      |                       |           |              |           |                      |                       |                     |                                      |           |      |        |                                      |       |       |     |         |     |    |     |     |   |     |   |     |   |
|        |             |             |             |           |                      |                       |           |              |           |                      |                       |                     |                                      |           |      |        |                                      |       |       |     |         |     |    |     |     |   |     |   |     |   |
|        |             |             |             |           |                      |                       |           |              |           |                      |                       |                     |                                      |           |      |        |                                      |       |       |     |         |     |    |     |     |   |     |   |     |   |
|        |             |             |             |           |                      |                       |           |              |           |                      |                       |                     |                                      |           |      |        |                                      |       |       |     |         |     |    |     |     |   |     |   |     |   |
|        |             |             |             |           |                      |                       |           |              |           |                      |                       |                     |                                      |           |      |        |                                      |       |       |     |         |     |    |     |     |   |     |   |     |   |
|        |             |             |             |           |                      |                       |           |              |           |                      |                       |                     |                                      |           |      |        |                                      |       |       |     |         |     |    |     |     |   |     |   |     |   |
|        |             |             |             |           |                      |                       |           |              |           |                      |                       |                     |                                      |           |      |        |                                      |       |       |     |         |     |    |     |     |   |     |   |     |   |
|        |             |             |             |           |                      |                       |           |              |           |                      |                       |                     |                                      |           |      |        |                                      |       |       |     |         |     |    |     |     |   |     |   |     |   |
|        |             |             |             |           |                      |                       |           |              |           |                      |                       |                     |                                      |           |      |        |                                      |       |       |     |         |     |    |     |     |   |     |   |     |   |
|        |             |             |             |           |                      |                       |           |              |           |                      |                       |                     |                                      |           |      |        |                                      |       |       |     |         |     |    |     |     |   |     |   |     |   |
|        |             |             |             |           |                      |                       |           |              |           |                      |                       |                     |                                      |           |      |        |                                      |       |       |     |         |     |    |     |     |   |     |   |     |   |
|        |             |             |             |           |                      |                       |           |              |           |                      |                       |                     |                                      |           |      |        |                                      |       |       |     |         |     |    |     |     |   |     |   |     |   |
|        |             |             |             |           |                      |                       |           |              |           |                      |                       |                     |                                      |           |      |        |                                      |       |       |     |         |     |    |     |     |   |     |   |     |   |
|        |             |             |             |           |                      |                       |           |              |           |                      |                       |                     |                                      |           |      |        |                                      |       |       |     |         |     |    |     |     |   |     |   |     |   |
|        |             |             |             |           |                      |                       |           |              |           |                      |                       |                     |                                      |           |      |        |                                      |       |       |     |         |     |    |     |     |   |     |   |     |   |
|        |             |             |             |           |                      |                       |           |              |           |                      |                       |                     |                                      |           |      |        |                                      |       |       |     |         |     |    |     |     |   |     |   |     |   |
|        |             |             |             |           |                      |                       |           |              |           |                      |                       |                     |                                      |           |      |        |                                      |       |       |     |         |     |    |     |     |   |     |   |     |   |
|        |             |             |             |           |                      |                       |           |              |           |                      |                       |                     |                                      |           |      |        |                                      |       |       |     |         |     |    |     |     |   |     |   |     |   |
|        |             |             |             |           |                      |                       |           |              |           |                      |                       |                     |                                      |           |      |        |                                      |       |       |     |         |     |    |     |     |   |     |   |     |   |
|        |             |             |             |           |                      |                       |           |              |           |                      |                       |                     |                                      |           |      |        |                                      |       |       |     |         |     |    |     |     |   |     |   |     |   |
|        |             |             |             |           |                      |                       |           |              |           |                      |                       |                     |                                      |           |      |        |                                      |       |       |     |         |     |    |     |     |   |     |   |     |   |
|        |             |             |             |           |                      |                       |           |              |           |                      |                       |                     |                                      |           |      |        |                                      |       |       |     |         |     |    |     |     |   |     |   |     |   |
|        |             |             |             |           |                      |                       |           |              |           |                      |                       |                     |                                      |           |      |        |                                      |       |       |     |         |     |    |     |     |   |     |   |     |   |
|        |             |             |             |           |                      |                       |           |              |           |                      |                       |                     |                                      |           |      |        |                                      |       |       |     |         |     |    |     |     |   |     |   |     |   |
|        |             |             |             |           |                      |                       |           |              |           |                      |                       |                     |                                      |           |      |        |                                      |       |       |     |         |     |    |     |     |   |     |   |     |   |
|        |             |             |             |           |                      |                       |           |              |           |                      |                       |                     |                                      |           |      |        |                                      |       |       |     |         |     |    |     |     |   |     |   |     |   |
|        |             |             |             |           |                      |                       |           |              |           |                      |                       |                     |                                      |           |      |        |                                      |       |       |     |         |     |    |     |     |   |     |   |     |   |
|        |             |             |             |           |                      |                       |           |              |           |                      |                       |                     |                                      |           |      |        |                                      |       |       |     |         |     |    |     |     |   |     |   |     |   |
|        |             |             |             |           |                      |                       |           |              |           |                      |                       |                     |                                      |           |      |        |                                      |       |       |     |         |     |    |     |     |   |     |   |     |   |
|        |             |             |             |           |                      |                       |           |              |           |                      |                       |                     |                                      |           |      |        |                                      |       |       |     |         |     |    |     |     |   |     |   |     |   |
|        |             |             |             |           |                      |                       |           |              |           |                      |                       |                     |                                      |           |      |        |                                      |       |       |     |         |     |    |     |     |   |     |   |     |   |
|        |             |             |             |           |                      |                       |           |              |           |                      |                       |                     |                                      |           |      |        |                                      |       |       |     |         |     |    |     |     |   |     |   |     |   |
|        |             |             |             |           |                      |                       |           |              |           |                      |                       |                     |                                      |           |      |        |                                      |       |       |     |         |     |    |     |     |   |     |   |     |   |
|        |             |             |             |           |                      |                       |           |              |           |                      |                       |                     |                                      |           |      |        |                                      |       |       |     |         |     |    |     |     |   |     |   |     |   |
|        |             |             |             |           |                      |                       |           |              |           |                      |                       |                     |                                      |           |      |        |                                      |       |       |     |         |     |    |     |     |   |     |   |     |   |
|        |             |             |             |           |                      |                       |           |              |           |                      |                       |                     |                                      |           |      |        |                                      |       |       |     |         |     |    |     |     |   |     |   |     |   |
|        |             |             |             |           |                      |                       |           |              |           |                      |                       |                     |                                      |           |      |        |                                      |       |       |     |         |     |    |     |     |   |     |   |     |   |
|        |             |             |             |           |                      |                       |           |              |           |                      |                       |                     |                                      |           |      |        |                                      |       |       |     |         |     |    |     |     |   |     |   |     |   |
|        |             |             |             |           |                      |                       |           |              |           |                      |                       |                     |                                      |           |      |        |                                      |       |       |     |         |     |    |     |     |   |     |   |     |   |
|        |             |             |             |           |                      |                       |           |              |           |                      |                       |                     |                                      |           |      |        |                                      |       |       |     |         |     |    |     |     |   |     |   |     |   |
|        |             |             |             |           |                      |                       |           |              |           |                      |                       |                     |                                      |           |      |        |                                      |       |       |     |         |     |    |     |     |   |     |   |     |   |
|        |             |             |             |           |                      |                       |           |              |           |                      |                       |                     |                                      |           |      |        |                                      |       |       |     |         |     |    |     |     |   |     |   |     |   |
|        |             |             |             |           |                      |                       |           |              |           |                      |                       |                     |                                      |           |      |        |                                      |       |       |     |         |     |    |     |     |   |     |   |     |   |
|        |             |             |             |           |                      |                       |           |              |           |                      |                       |                     |                                      |           |      |        |                                      |       |       |     |         |     |    |     |     |   |     |   |     |   |
|        |             |             |             |           |                      |                       |           |              |           |                      |                       |                     |                                      |           |      |        |                                      |       |       |     |         |     |    |     |     |   |     |   |     |   |
|        |             |             |             |           |                      |                       |           |              |           |                      |                       |                     |                                      |           |      |        |                                      |       |       |     |         |     |    |     |     |   |     |   |     |   |
|        |             |             |             |           |                      |                       |           |              |           |                      |                       |                     |                                      |           |      |        |                                      |       |       |     |         |     |    |     |     |   |     |   |     |   |
|        |             |             |             |           |                      |                       |           |              |           |                      |                       |                     |                                      |           |      |        |                                      |       |       |     |         |     |    |     |     |   |     |   |     |   |
|        |             |             |             |           |                      |                       |           |              |           |                      |                       |                     |                                      |           |      |        |                                      |       |       |     |         |     |    |     |     |   |     |   |     |   |
|        |             |             |             |           |                      |                       |           |              |           |                      |                       |                     |                                      |           |      |        |                                      |       |       |     |         |     |    |     |     |   |     |   |     |   |
|        |             |             |             |           |                      |                       |           |              |           |                      |                       |                     |                                      |           |      |        |                                      |       |       |     |         |     |    |     |     |   |     |   |     |   |
|        |             |             |             |           |                      |                       |           |              |           |                      |                       |                     |                                      |           |      |        |                                      |       |       |     |         |     |    |     |     |   |     |   |     |   |
|        |             |             |             |           |                      |                       |           |              |           |                      |                       |                     |                                      |           |      |        |                                      |       |       |     |         |     |    |     |     |   |     |   |     |   |
|        |             |             |             |           |                      |                       |           |              |           |                      |                       |                     |                                      |           |      |        |                                      |       |       |     |         |     |    |     |     |   |     |   |     |   |
|        |             |             |             |           |                      |                       |           |              |           |                      |                       |                     |                                      |           |      |        |                                      |       |       |     |         |     |    |     |     |   |     |   |     |   |
|        |             |             |             |           |                      |                       |           |              |           |                      |                       |                     |                                      |           |      |        |                                      |       |       |     |         |     |    |     |     |   |     |   |     |   |
|        |             |             |             |           |                      |                       |           |              |           |                      |                       |                     |                                      |           |      |        |                                      |       |       |     |         |     |    |     |     |   |     |   |     |   |
|        |             |             |             |           |                      |                       |           |              |           |                      |                       |                     |                                      |           |      |        |                                      |       |       |     |         |     |    |     |     |   |     |   |     |   |
|        |             |             |             |           |                      |                       |           |              |           |                      |                       |                     |                                      |           |      |        |                                      |       |       |     |         |     |    |     |     |   |     |   |     |   |
|        |             |             |             |           |                      |                       |           |              |           |                      |                       |                     |                                      |           |      |        |                                      |       |       |     |         |     |    |     |     |   |     |   |     |   |
|        |             |             |             |           |                      |                       |           |              |           |                      |                       |                     |                                      |           |      |        |                                      |       |       |     |         |     |    |     |     |   |     |   |     |   |
|        |             |             |             |           |                      |                       |           |              |           |                      |                       |                     |                                      |           |      |        |                                      |       |       |     |         |     |    |     |     |   |     |   |     |   |
|        |             |             |             |           |                      |                       |           |              |           |                      |                       |                     |                                      |           |      |        |                                      |       |       |     |         |     |    |     |     |   |     |   |     |   |
|        |             |             |             |           |                      |                       |           |              |           |                      |                       |                     |                                      |           |      |        |                                      |       |       |     |         |     |    |     |     |   |     |   |     |   |
|        |             |             |             |           |                      |                       |           |              |           |                      |                       |                     |                                      |           |      |        |                                      |       |       |     |         |     |    |     |     |   |     |   |     |   |
|        |             |             |             |           |                      |                       |           |              |           |                      |                       |                     |                                      |           |      |        |                                      |       |       |     |         |     |    |     |     |   |     |   |     |   |
|        |             |             |             |           |                      |                       |           |              |           |                      |                       |                     |                                      |           |      |        |                                      |       |       |     |         |     |    |     |     |   |     |   |     |   |

← Omit shear connectors on exterior beams.

Checked Entries  
FHS 3-27-65

Revised: To use Preformed  
Joint Sealer, A.J. (9-8-65)

Revised 2-19-65. Added Type B  
Enclaves Rail, FMH.

NOTE: Solid shear connectors, grout-filled, solid fluted, or equal may be used in place of the channels shown at the following ratios: 9/4" diameter stud in place of 1.22 inches of channel, 7/8" diameter stud in place of 2.52 inches of channel. The studs shall be 4" long and automatically end welded to the beam flanges in accordance with recommendations of the manufacturer.

Channel sections will be used as basis for measurement of structural steel in abutment connectors.

This drawing is to be used with Drawing 14997B Rev.

All steel shall be A-36 steel unless otherwise noted.

DESIGN SPECIFICATIONS: AASK 1001 L102

1. Dead Load: (TYDCA Rail) Interior Span  
2. To WF Beam (without const 17) 45/11/11. 13/12/11 or

b. Composite Beam (with const.  $J$ ) 233 %

2. Line Load a. To Casselle from 1.045 wheelst

|              |                     |        |
|--------------|---------------------|--------|
| Red Stripes: | 25 3 Groups (A-30)  | 1,200  |
|              | Stripped 300 (A-30) | 20,000 |

|                             |          |
|-----------------------------|----------|
| Estimated '80:              | 25,000   |
| 1A Dend Land: (Type 8 Bill) | Interior |

|  |            |
|--|------------|
| a. To W <sup>-</sup> Beam (without constr. jt) | 437% + 1.1 |
| (with constr. jt)                              | 437% + 1.1 |

|  |     |
|--|-----|
| b. To Comp. Beam (without constr. jt.) | 81  |
| (with constr. jt.)                     | 200 |

This drawing adapted from Std. Dwg. 15140.

1997, 1998, 1999, 2000, 2001, 2002, 2003, 2004, 2005, 2006, 2007, 2008, 2009, 2010, 2011, 2012, 2013, 2014, 2015, 2016, 2017, 2018, 2019, 2020, 2021, 2022, 2023, 2024, 2025, 2026, 2027, 2028, 2029, 2030, 2031, 2032, 2033, 2034, 2035, 2036, 2037, 2038, 2039, 2040, 2041, 2042, 2043, 2044, 2045, 2046, 2047, 2048, 2049, 2050, 2051, 2052, 2053, 2054, 2055, 2056, 2057, 2058, 2059, 2060, 2061, 2062, 2063, 2064, 2065, 2066, 2067, 2068, 2069, 2070, 2071, 2072, 2073, 2074, 2075, 2076, 2077, 2078, 2079, 2080, 2081, 2082, 2083, 2084, 2085, 2086, 2087, 2088, 2089, 2090, 2091, 2092, 2093, 2094, 2095, 2096, 2097, 2098, 2099, 2100, 2101, 2102, 2103, 2104, 2105, 2106, 2107, 2108, 2109, 2110, 2111, 2112, 2113, 2114, 2115, 2116, 2117, 2118, 2119, 2120, 2121, 2122, 2123, 2124, 2125, 2126, 2127, 2128, 2129, 2130, 2131, 2132, 2133, 2134, 2135, 2136, 2137, 2138, 2139, 2140, 2141, 2142, 2143, 2144, 2145, 2146, 2147, 2148, 2149, 2150, 2151, 2152, 2153, 2154, 2155, 2156, 2157, 2158, 2159, 2160, 2161, 2162, 2163, 2164, 2165, 2166, 2167, 2168, 2169, 2170, 2171, 2172, 2173, 2174, 2175, 2176, 2177, 2178, 2179, 2180, 2181, 2182, 2183, 2184, 2185, 2186, 2187, 2188, 2189, 2190, 2191, 2192, 2193, 2194, 2195, 2196, 2197, 2198, 2199, 2200, 2201, 2202, 2203, 2204, 2205, 2206, 2207, 2208, 2209, 2210, 2211, 2212, 2213, 2214, 2215, 2216, 2217, 2218, 2219, 2220, 2221, 2222, 2223, 2224, 2225, 2226, 2227, 2228, 2229, 2230, 2231, 2232, 2233, 2234, 2235, 2236, 2237, 2238, 2239, 2240, 2241, 2242, 2243, 2244, 2245, 2246, 2247, 2248, 2249, 2250, 2251, 2252, 2253, 2254, 2255, 2256, 2257, 2258, 2259, 2260, 2261, 2262, 2263, 2264, 2265, 2266, 2267, 2268, 2269, 2270, 2271, 2272, 2273, 2274, 2275, 2276, 2277, 2278, 2279, 2280, 2281, 2282, 2283, 2284, 2285, 2286, 2287, 2288, 2289, 2290, 2291, 2292, 2293, 2294, 2295, 2296, 2297, 2298, 2299, 2300, 2301, 2302, 2303, 2304, 2305, 2306, 2307, 2308, 2309, 2310, 2311, 2312, 2313, 2314, 2315, 2316, 2317, 2318, 2319, 2320, 2321, 2322, 2323, 2324, 2325, 2326, 2327, 2328, 2329, 2330, 2331, 2332, 2333, 2334, 2335, 2336, 2337, 2338, 2339, 2340, 2341, 2342, 2343, 2344, 2345, 2346, 2347, 2348, 2349, 2350, 2351, 2352, 2353, 2354, 2355, 2356, 2357, 2358, 2359, 2360, 2361, 2362, 2363, 2364, 2365, 2366, 2367, 2368, 2369, 2370, 2371, 2372, 2373, 2374, 2375, 2376, 2377, 2378, 2379, 2380, 2381, 2382, 2383, 2384, 2385, 2386, 2387, 2388, 2389, 2390, 2391, 2392, 2393, 2394, 2395, 2396, 2397, 2398, 2399, 2400, 2401, 2402, 2403, 2404, 2405, 2406, 2407, 2408, 2409, 2410, 2411, 2412, 2413, 2414, 2415, 2416, 2417, 2418, 2419, 2420, 2421, 2422, 2423, 2424, 2425, 2426, 2427, 2428, 2429, 2430, 2431, 2432, 2433, 2434, 2435, 2436, 2437, 2438, 2439, 2440, 2441, 2442, 2443, 2444, 2445, 2446, 2447, 2448, 2449, 2450, 2451, 2452, 2453, 2454, 2455, 2456, 2457, 2458, 2459, 2460, 2461, 2462, 2463, 2464, 2465, 2466, 2467, 2468, 2469, 2470, 2471, 2472, 2473, 2474, 2475, 2476, 2477, 2478, 2479, 2480, 2481, 2482, 2483, 2484, 2485, 2486, 2487, 2488, 2489, 2490, 2491, 2492, 2493, 2494, 2495, 2496, 2497, 2498, 2499, 2500, 2501, 2502, 2503, 2504, 2505, 2506, 2507, 2508, 2509, 2510, 2511, 2512, 2513, 2514, 2515, 2516, 2517, 2518, 2519, 2520, 2521, 2522, 2523, 2524, 2525, 2526, 2527, 2528, 2529, 2530, 2531, 2532, 2533, 2534, 2535, 2536, 2537, 2538, 2539, 2540, 2541, 2542, 2543, 2544, 2545, 2546, 2547, 2548, 2549, 2550, 2551, 2552, 2553, 2554, 2555, 2556, 2557, 2558, 2559, 2560, 2561, 2562, 2563, 2564, 2565, 2566, 2567, 2568, 2569, 2570, 2571, 2572, 2573, 2574, 2575, 2576, 2577, 2578, 2579, 2580, 2581, 2582, 2583, 2584, 2585, 2586, 2587, 2588, 2589, 2590, 2591, 2592, 2593, 2594, 2595, 2596, 2597, 2598, 2599, 2600, 2601, 2602, 2603, 2604, 2605, 2606, 2607, 2608, 2609, 2610, 2611, 2612, 2613, 2614, 2615, 2616, 2617, 2618, 2619, 2620, 2621, 2622, 2623, 2624, 2625, 2626, 2627, 2628, 2629, 2630, 2631, 2632, 2633, 2634, 2635, 2636, 2637, 2638, 2639, 2640, 2641, 2642, 2643, 2644, 2645, 2646, 2647, 2648, 2649, 2650, 2651, 2652, 2653, 2654, 2655, 2656, 2657, 2658, 2659, 2660, 2661, 2662, 2663, 2664, 2665, 2666, 2667, 2668, 2669, 2670, 2671, 2672, 2673, 2674, 2675, 2676, 2677, 2678, 26

SECTION A-A OF REGULAR SPAN  
(Regular spans have all beams of equal depth)

Expansion Device For Prefabricated Joint Sealer see Special Provisions  
Roadway E-12 @ 20.7 x 24'-0" (Bent to crown)

Detail device 8" high and provide 1/2" of shims  
(2 - 1/2" and one 1/2")

\*  $\frac{1}{2} \times \frac{3}{4} \times 1'-0"$  Anchors welded to  $\frac{1}{2}$ " Machine bolts.  
(see Dwg. 14990B)

SEALING 141V38

Cape L Flange to  
clear beam flange at

all beams Regular Span.

DETAILS OF STANDARD

35'-90' COMPOSITE I-BEAM SP

24-0" CLEAR RDWY. 1-6 OR 1-7  
INT. ROUTE 40 SEC. 3

ARKANSAS STATE HIGHWAY COMM

REURAWN BY: 145 DATE: 10-6-67

TRACED BY: \_\_\_\_\_ DATE: \_\_\_\_\_ SCALE: 8 1/2  
CHECKED BY: WEV DATE: 10-6-64

*D. Carlson* **BRIDGE NO. 395** **DRAWING NO.**  
ERIC S. ENGLISH