

Bridge Inspection Report

B3727
I- 40 EAST BND LNS
over
CREEK



Inspection Date:

Inspected By:

Inspection Type(s):

Inspector:

Structure Number: B3727

Inspection Date:

Facility Carried: I- 40 EAST BND
LNS

Bridge Inspection Report

National Bridge Inventory

IDENTIFICATION		INSPECTIONS	
(1) STATE CODE	056 - Arkansas	(90) INSPECTION DATE	12/07/2016
(8) STRUCTURE NUMBER	B3727	(91) DESIGNATED INSPECTION FREQUENCY	24
(5) INV. ROUTE (ON/UNDER)	1 1 1 40 2	(92) CRITICAL FEATURE INSPECTION	(93) CFI DATE
(2) HIGHWAY AGENCY 01	(3) COUNTY CODE 095	A. FRACTURE CRITICAL DETAIL	N
(4) PLACE CODE	00000	B. UNDERWATER INSPECTION	N
(6) FEATURES INTERSECTED	CREEK	C. OTHER SPECIAL	N
(7) FACILITY CARRIED	I- 40 EAST BND LNS		
(9) LOCATION	4.06 MI W OF SH 17		
(11) MILEPOINT 211.680	(12) BASE HIGHWAY NETWORK 1		
(13A) LRS INVENTORY ROUTE 0000040430	(13B) SUBROUTE NUMBER 00		
(16) LATITUDE 34.885090	(17) LONGITUDE -91.259491		
(98A) BORDER BRIDGE CODE			
PERCENT RESPONSIBILITY	(99) BORDER BRIDGE STRUCT		
STRUCTURE TYPE AND MATERIAL		CONDITION	
(43) STRUCTURE TYPE, MAIN		(58) DECK	7
A) KIND OF MATERIAL/DESIGN: 4 - Steel continuous		(59) SUPERSTRUCTURE 8	(60) SUBSTRUCTURE 8
B) TYPE OF DESIGN/CONSTR: 02 - Stringer/Multi-beam or Girder		(61) CHANNEL & CHANNEL PROTECTION 8	(62) CULVERT N
(44) STRUCTURE TYPE, APPROACH SPANS			
A) KIND OF MATERIAL/DESIGN: 0 - Other			
B) TYPE OF DESIGN/CONSTR: 00 - Other			
(45) NUMBER OF SPANS IN MAIN 3	(46) NUMBER OF APPROACH 0		
(107) DECK STRUCTURE TYPE 1	(108A) WEARING SURFACE 1		
(108B) DECK MEMBRANE 0	(108C) DECK PROTECTION 1		
AGE OF SERVICE		LOAD RATING AND POSTING	
(27) YEAR BUILT 1966	(106) YEAR RECONSTRUCTED 2000	(31) DESIGN LOAD	6
(42) TYPE OF SERVICE ON 1 UNDER 5		(63) METHOD USED TO DETERMINE OPERATING RATING	1
(28) LANES ON 02 UNDER 00		(64) OPERATING RATING	60.0
(29) AVERAGE DAILY TRAFFIC 13000	(19) BYPASS DETOUR LENGTH 5	(65) METHOD USED TO DETERMINE INVENTORY RATING	1
(30) YEAR OF AVERAGE DAILY TRAFFIC 2014		(66) INVENTORY RATING	36.0
(109) AVERAGE DAILY TRUCK TRAFFIC 48		(70) BRIDGE POSTING	5
		(41) STRUCTURE OPEN/POSTED/CLOSED	A
GEOMETRIC DATA		APPRAISAL	
(48) LENGTH OF MAX SPAN (ft.) 44	(49) STRUCTURE LENGTH (ft.) 134	(67) STRUCTURAL EVALUATION	8
(50) CURB/SIDEWALK WIDTHS (ft.) LEFT 0 RIGHT 0		(68) DECK GEOMETRY	7
(51) BRDG RDWY WIDTH CURB-TO-CURB (ft.) 40.0		(69) UNDERCLEARANCES, VERTICAL & HORIZONTAL	N
(52) DECK WIDTH, OUT-TO-OUT (ft.) 43.2		(71) WATERWAY ADEQUACY	8
(32) APPROACH ROADWAY WIDTH (ft.) 40.0		(72) APPROACH ROADWAY ALIGNMENT	8
(33) BRIDGE MEDIAN 0	(34) SKEW (DEG.) 0	(36) TRAFFIC SAFETY FEATURE	
(35) STRUCTURE FLARED 0	(10) INV RTE, MIN VERT CLEAR (ft.) 99.99	36A) BRIDGE RAILINGS:	1
(47) TOTAL HORIZONTAL CLEARANCE (ft.) 40.0		36B) TRANSITIONS:	1
(53) VERTICAL CLEARANCE OVER BRIDGE ROADWAY (ft.) 99.99		36C) APPROACH GUARDRAIL:	1
(54) VERTICAL UNDER CLEARANCE (ft.) N 0		36D) APPROACH GUARDRAIL ENDS:	1
(55) LATERAL UNDER CLEARANCE RIGHT (ft.) N 99.9		(113) SCOUR CRITICAL BRIDGES	5
(56) MIN LATERAL UNDER CLEARANCE (ft.) 0		SUFFICIENCY RATING	0
		STATUS	93.1
PROPOSED IMPROVEMENTS		CLASSIFICATION	
(75A) TYPE OF WORK PROPOSED	(75B) WORK DONE BY	(112) NBIS BRIDGE LENGTH	Y
(76) LENGTH OF STRUCTURE IMPROVEMENT (ft.) 0		(104) HIGHWAY SYSTEM OF THE INVENTORY ROUTE	1
(94) BRIDGE IMPROVEMENT COST (\$)	0	(26) FUNCTIONAL CLASSIFICATION OF INVENTORY ROUTE	01
(95) ROADWAY IMPROVEMENT COST (\$)	0	(100) STRAHNET HIGHWAY DESIGNATION	1
(96) TOTAL PROJECT COST	0	(101) PARALLEL STRUCTURE DESIGNATION	R
(97) YEAR OF IMPROVEMENT COST ESTIMATE		(102) DIRECTION OF TRAFFIC	1
(114) FUTURE ADT 18277	(115) YEAR OF FUTURE ADT 2028	(103) TEMP STRUCTURE	
		(105) FEDERAL LANDS HIGHWAYS	0
		(110) DESIGNATED NATIONAL NETWORK	1
		(20) TOLL	3
		(21) MAINTENANCE RESPONSIBILITY	01
		(22) OWNER	01
		(37) HISTORICAL	5
		NAVIGATION DATA	
		(38) NAVIGATION CONTROL	0
		(111) PIER OR ABUTMENT PROTECTION	1
		(39) NAV VERT CLEARANCE (ft.)	0
		(116) MIN NAVIGATION VERT CLEARANCE, VERT LIFT BRIDGE (ft.)	0
		(40) NAV HORIZONTAL CLEARANCE (ft.)	0

Inspector:

Structure Number: B3727

Inspection Date:

Facility Carried: I- 40 EAST BND
LNS

Bridge Inspection Report

Element Inspection

	Environment	Total Quantity	Units	Condition State 1	Condition State 2	Condition State 3	Condition State 4
12 - Reinforced Concrete Deck	1- Ben.	5762	sq. ft.	5226	536	0	0
	SEVERAL UNSEALED HAIRLINE TRANSVERSE CRACKS. 4 OPEN LONGITUDIONAL CRACKS PER SPAN, FULL LENGTH						
1130 - Cracking (RC and Other)		536			536		
107 - Steel Open Girder/Beam	1- Ben.	804	ft.	804			
515 - Steel Protective Coating		5451	sq. ft.	5451			
205 - Reinforced Concrete Column	1- Ben.	4	each	4			
215 - Reinforced Concrete Abutment	1- Ben.	120	ft.	112	8	0	0
	Both backwalls have hairline vert. cracks with light efflorescence.						
1120 - Efflorescence/Rust Staining		8			8		
234 - Reinforced Concrete Pier Cap	1- Ben.	82	ft.	82			
302 - Compression Joint Seal	1- Ben.	86	ft.	86			
310 - Elastomeric Bearing	1- Ben.	24	each	24			
	Bent #1 girder #1 anchor bolt is backing out.						
321 - Reinforced Concrete Approach Slab	1- Ben.	1757	sq. ft.	1427	330	0	0
	SEVERAL LONGITUDNAL AND TRANSVERSE CRACKS.						
1130 - Cracking (RC and Other)		330			330		
331 - Reinforced Concrete Bridge Railing	1- Ben.	268	ft.	268			

Inspector:

Inspection Date:

Structure Number: B3727

Facility Carried: I- 40 EAST BND
LNS

Bridge Inspection Report

Maintenance Needs

Date Reported: 12/17/2014 12:00:00 AM

Priority: C - Important

Work Code: N/A

Deficiency Description:

VEGETATION

ABUTMENT #1

BRUSH GROWING IN MEDIAN BESIDE BRIDGE AND UP BENT #2&3 COLUMNS.

Work Description:

Date Repairs Completed:

Maintenance Comments:

Stage: Monitor



PHOTO 1 Description

Stage: Monitor



PHOTO 2 Description

Inspector:

Inspection Date:

Structure Number: B3727

Facility Carried: I- 40 EAST BND
LNS

Bridge Inspection Report

Maintenance Needs

Stage: Monitor



PHOTO 3 Description

Stage: Monitor



PHOTO 4 Description

Inspector:

Inspection Date:

Structure Number: B3727

Facility Carried: I- 40 EAST BND
LNS

Bridge Inspection Report

Maintenance Needs

Date Reported: 12/17/2014 12:00:00 AM

Priority: D - Routine

Work Code: N/A

Deficiency Description:

ANCHOR BOLT

BENT #1 GIRDER #1

ANCHOR BOLT BACKING OUT.

Work Description:

Date Repairs Completed:

Maintenance Comments:

Stage: Monitor



PHOTO 1 Description Abutment #1 left anchor bolt backed out.

Inspector:

Inspection Date:

Structure Number: B3727

Facility Carried: I- 40 EAST BND
LNS

Bridge Inspection Report

Maintenance Needs

Date Reported: 12/17/2014 12:00:00 AM

Priority: D - Routine

Work Code: N/A

Deficiency Description:

DECK

ALL SPANS

DECK HAS UNSEALED TRANSVERSE AND LONGITUDINAL CRACKS.

Work Description:

Date Repairs Completed:

Maintenance Comments:

Stage: Monitor



PHOTO 1 Description Typical longitudinal deck crack.

Stage: Monitor

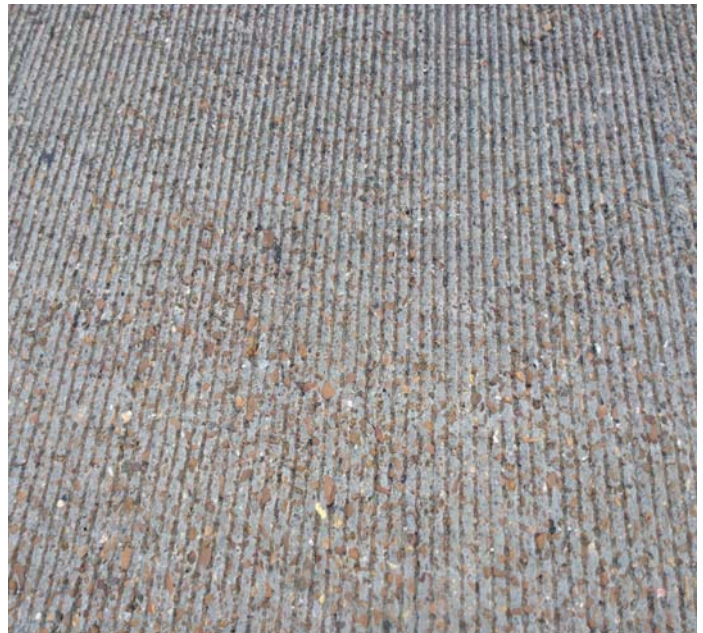


PHOTO 2 Description Typical transverse deck crack.

Inspector:

Inspection Date:

Structure Number: B3727

Facility Carried: I- 40 EAST BND
LNS

Bridge Inspection Report

Maintenance Needs

Date Reported: 12/17/2014 12:00:00 AM

Priority: D - Routine

Work Code: N/A

Deficiency Description:

APPROACH SLABS

ABUTMENT #1 AND #2

APPROACH SLAB CRACKS NEED RESEALED.

Work Description:

Date Repairs Completed:

Maintenance Comments:

Stage: Monitor



PHOTO 1 Description Abutment #1 approach slab typical transverse and longitudinal cracks.