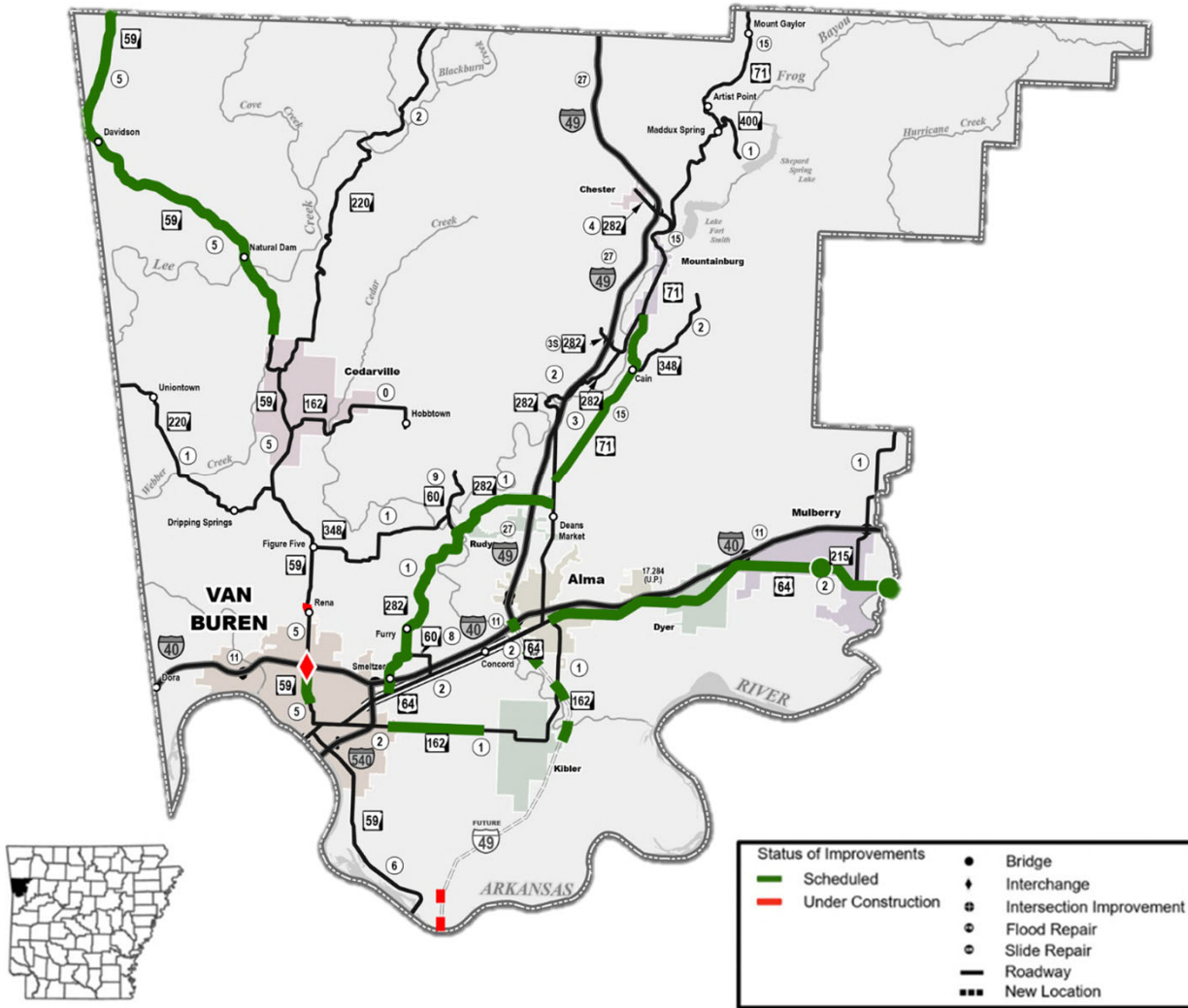




**ALMA AREA CHAMBER OF COMMERCE**  
ANNUAL MEMBERSHIP MEETING

**VICE CHAIRMAN KEITH GIBSON**  
ARKANSAS HIGHWAY COMMISSION  
MARCH 17, 2026





# COUNTY PROJECT SUMMARY

## CRAWFORD COUNTY







# STATUS OF IMPROVEMENTS

## INTERSTATE 49



# PRELIMINARY CONSTRUCTION PHASES



Segment	Major Work Scope Items
<b>Phase 1</b> 	<b>River Bridge and Approach Grading/Paving</b> (Highway 22 to Gun Club Road)
<b>Phase 2</b> 	<b>Grading and Six Structures and Approaches</b> (Clear Creek Road to I-40)
<b>Phase 3</b> 	<b>Grading, Paving, Grade Separations and Cross Drainage Structures</b> (Gun Club Road to Clear Creek Road)
<b>Phase 4</b> 	<b>Base, Surfacing, and Six Structures and Approaches</b> (Clear Creek Road to I-40)

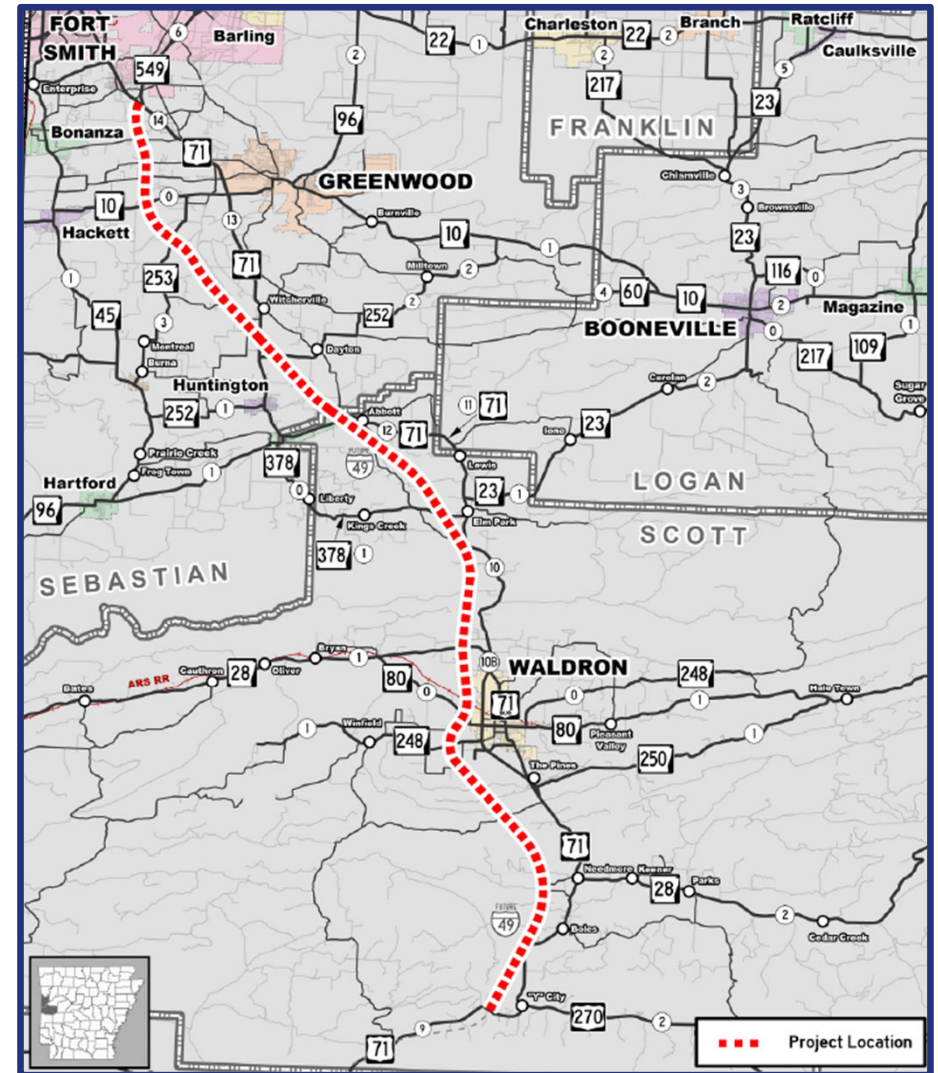






# INTERSTATE 49

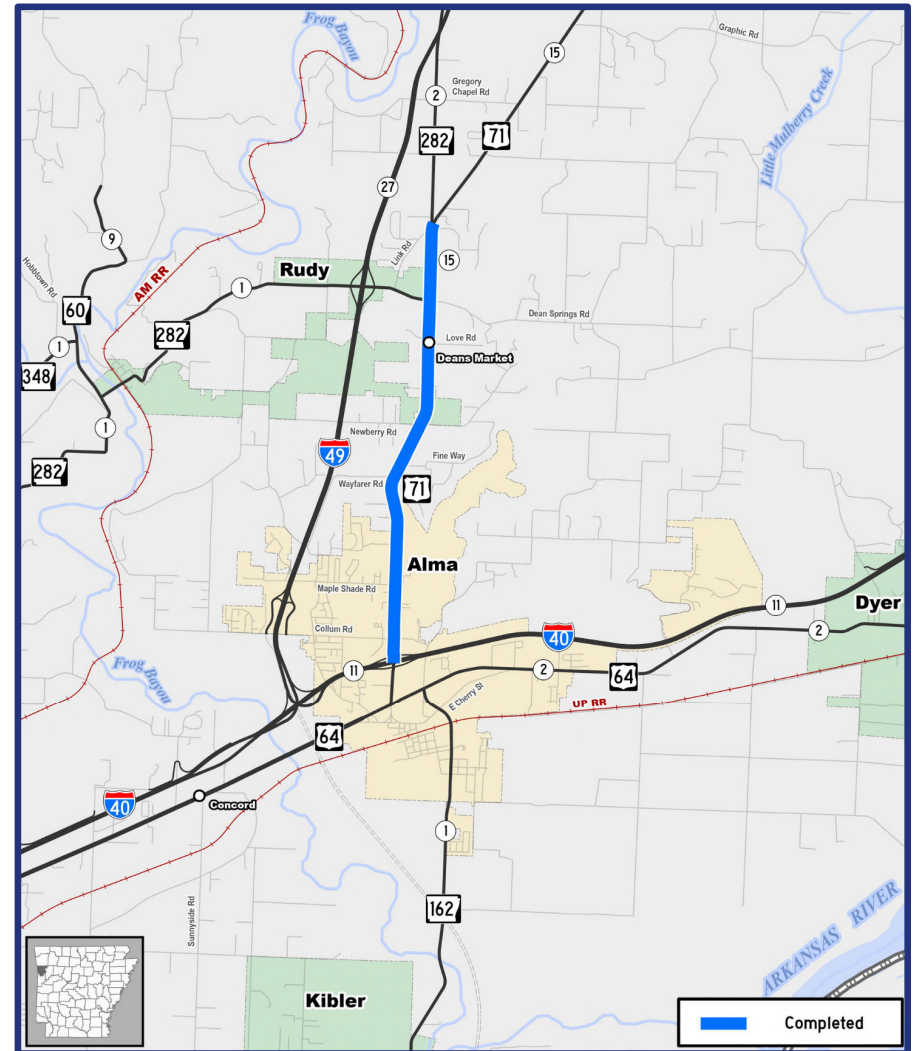
BARLING TO "Y" CITY





# HIGHWAY 71

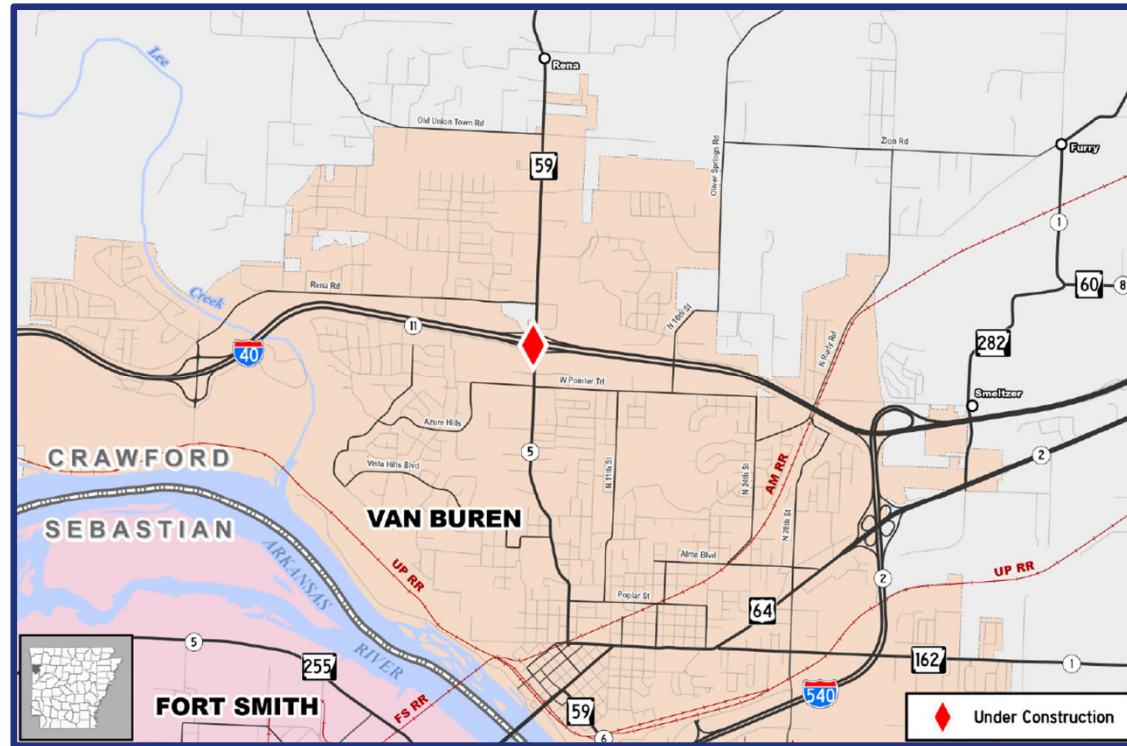
## CRAWFORD COUNTY







# INTERSTATE 40/ HIGHWAY 59 CRAWFORD COUNTY

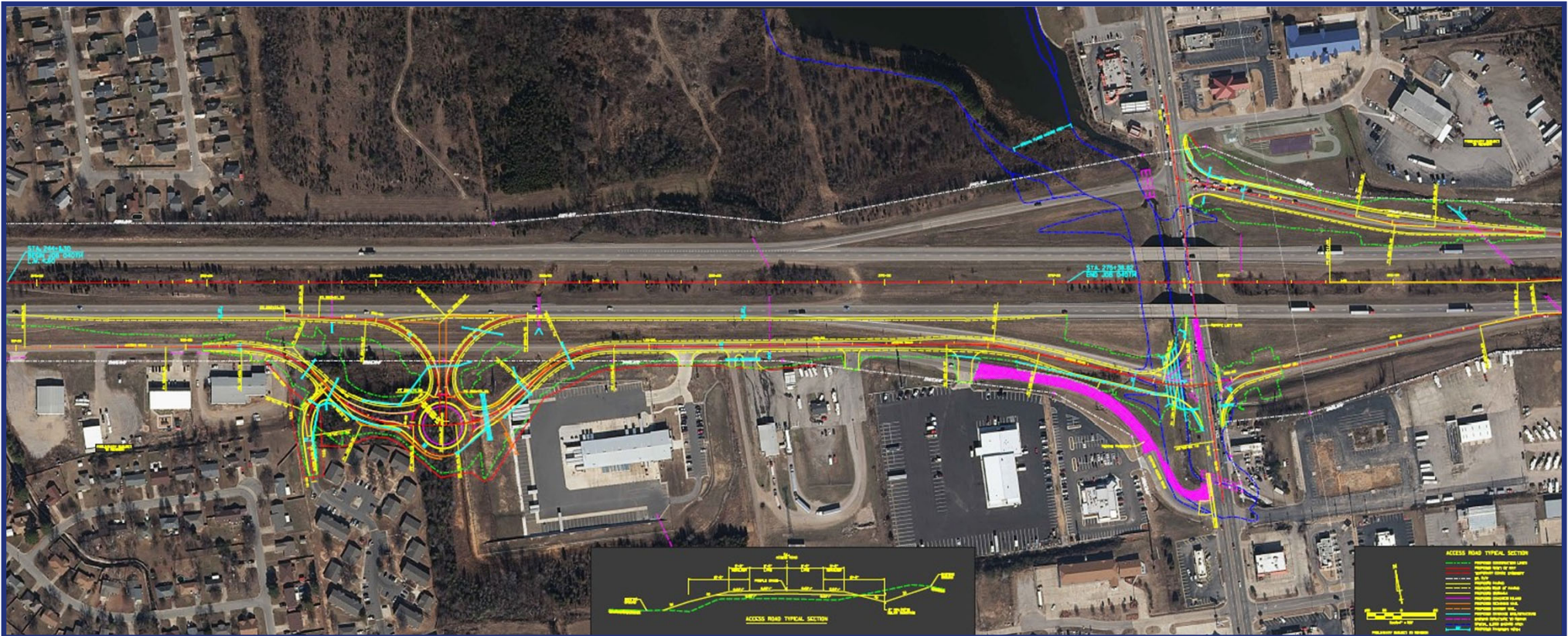






# INTERSTATE 40/HIGHWAY 59

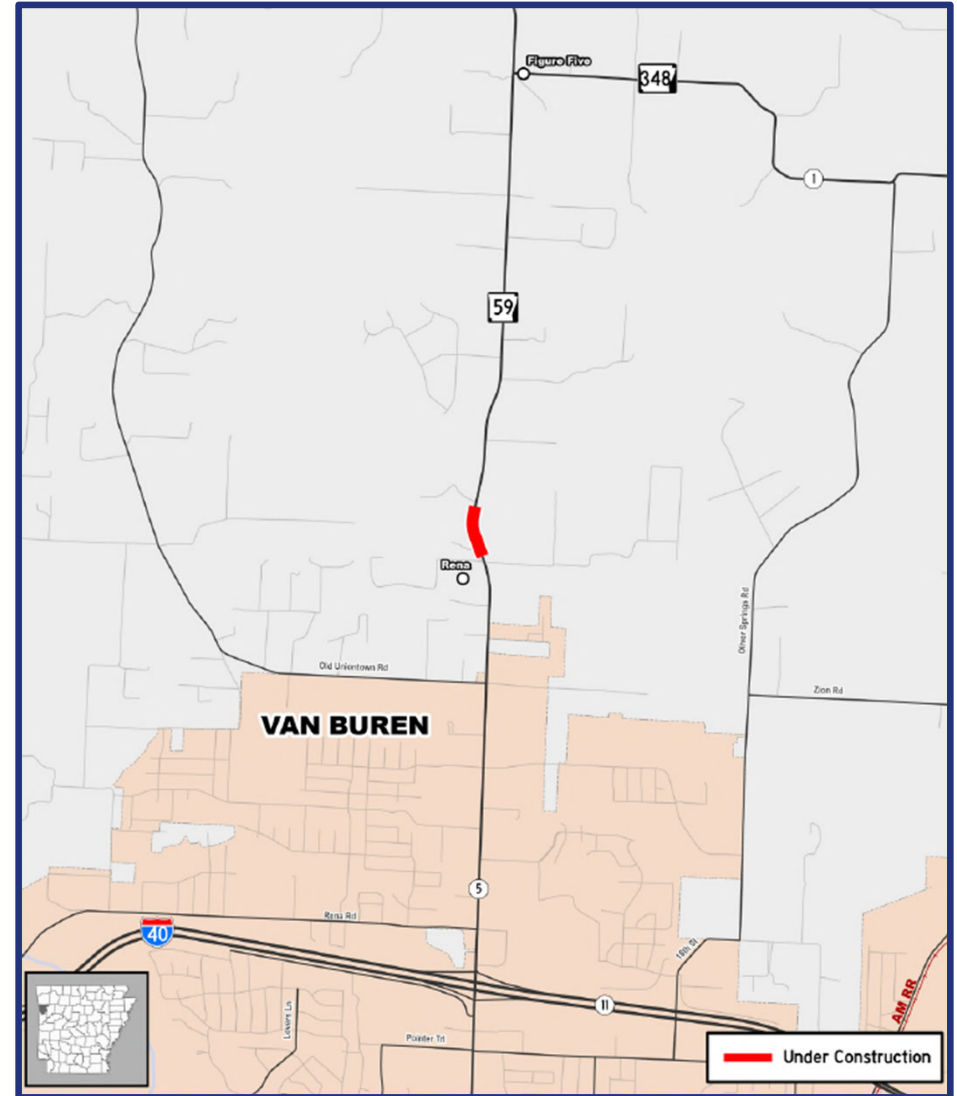
## CRAWFORD COUNTY





# HIGHWAY 59

## CRAWFORD COUNTY

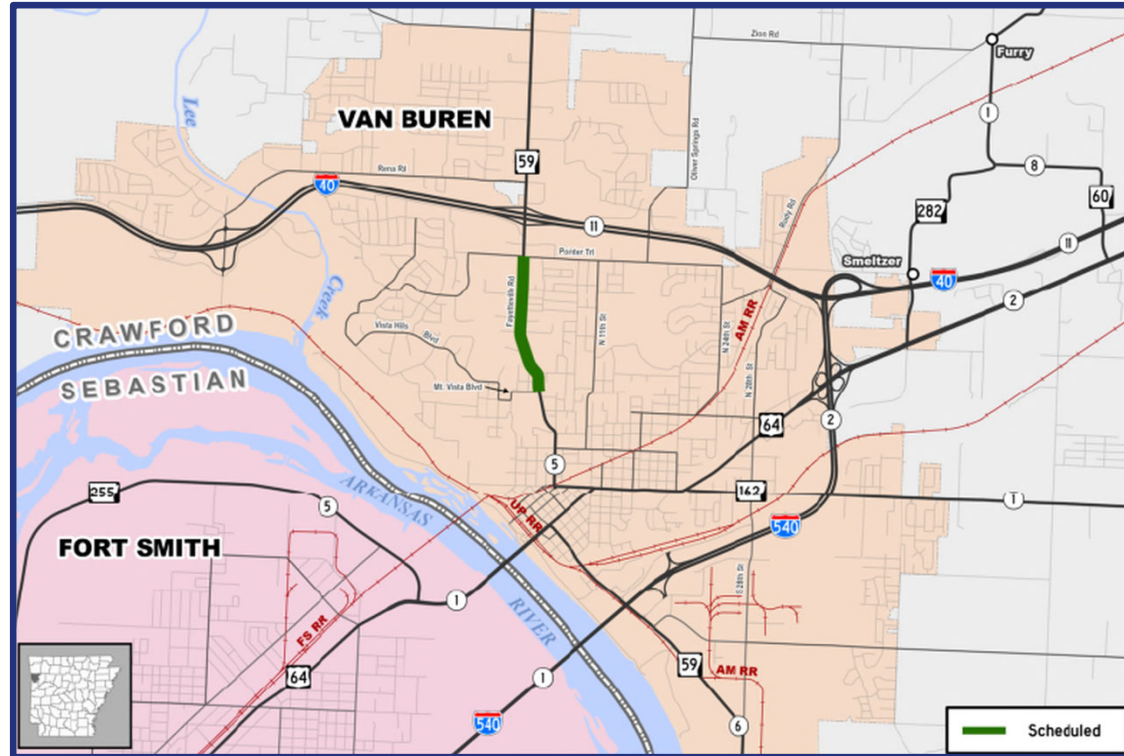






# HIGHWAY 59

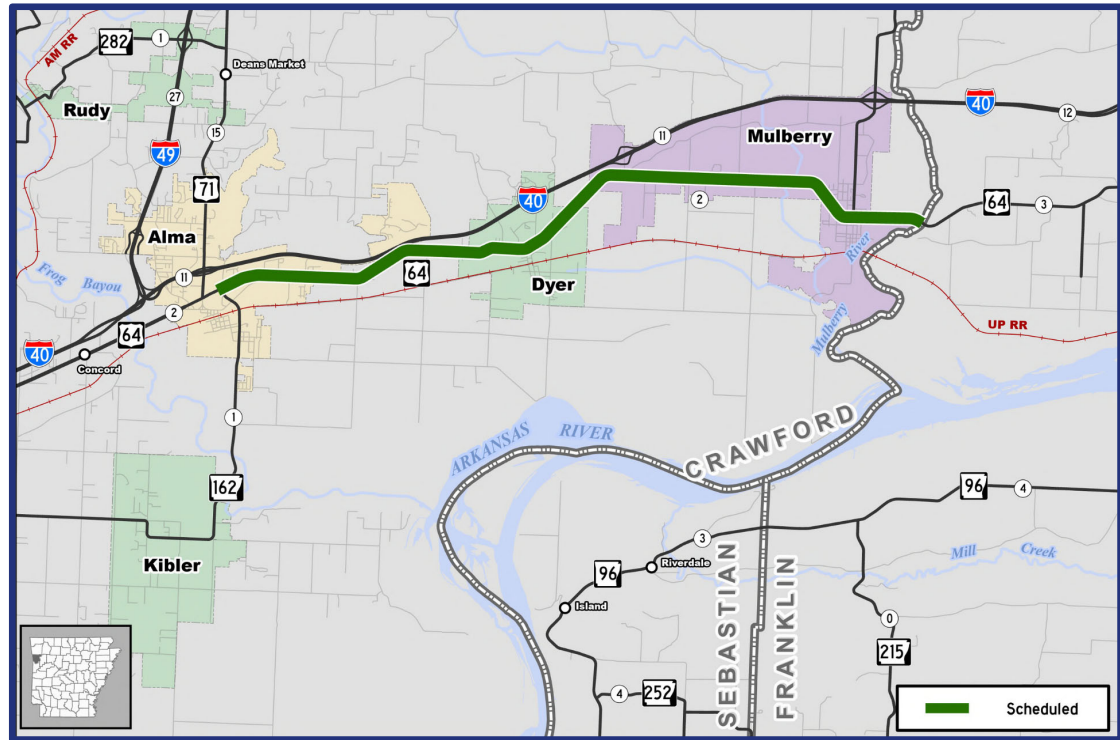
## CRAWFORD COUNTY





# HIGHWAY 64

## CRAWFORD COUNTY

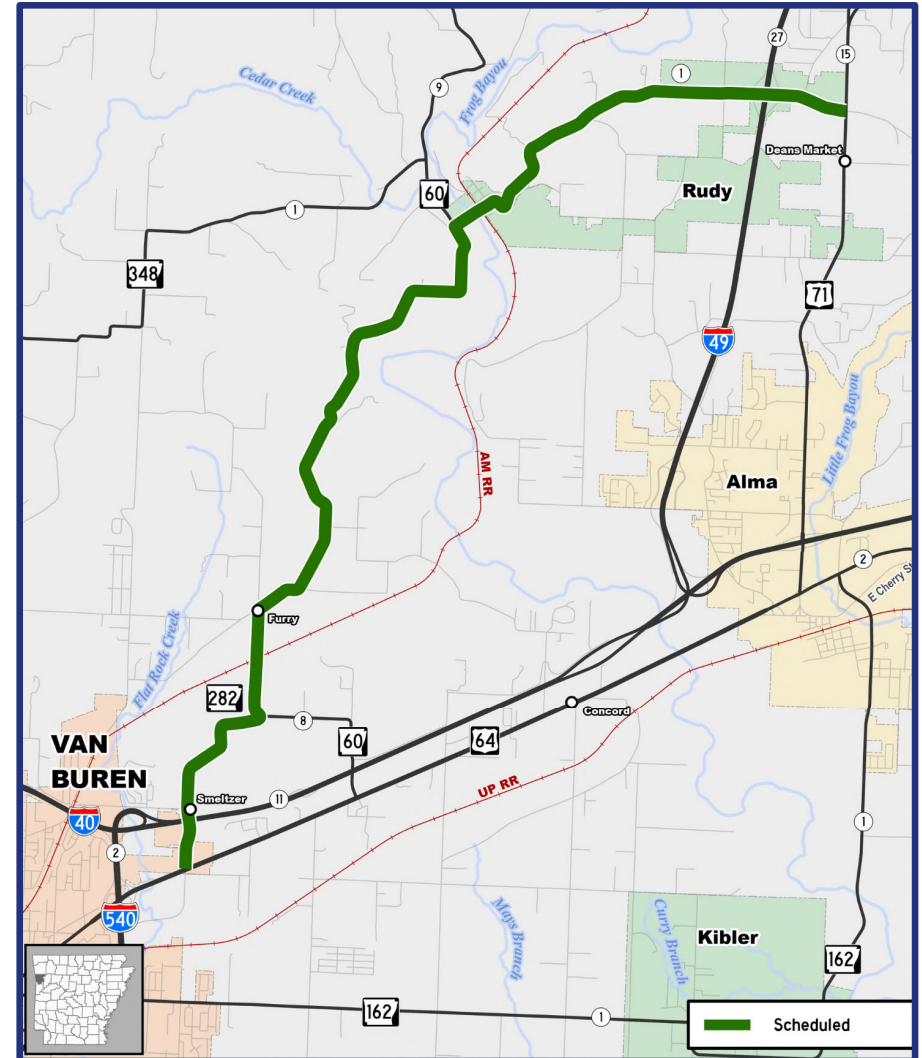






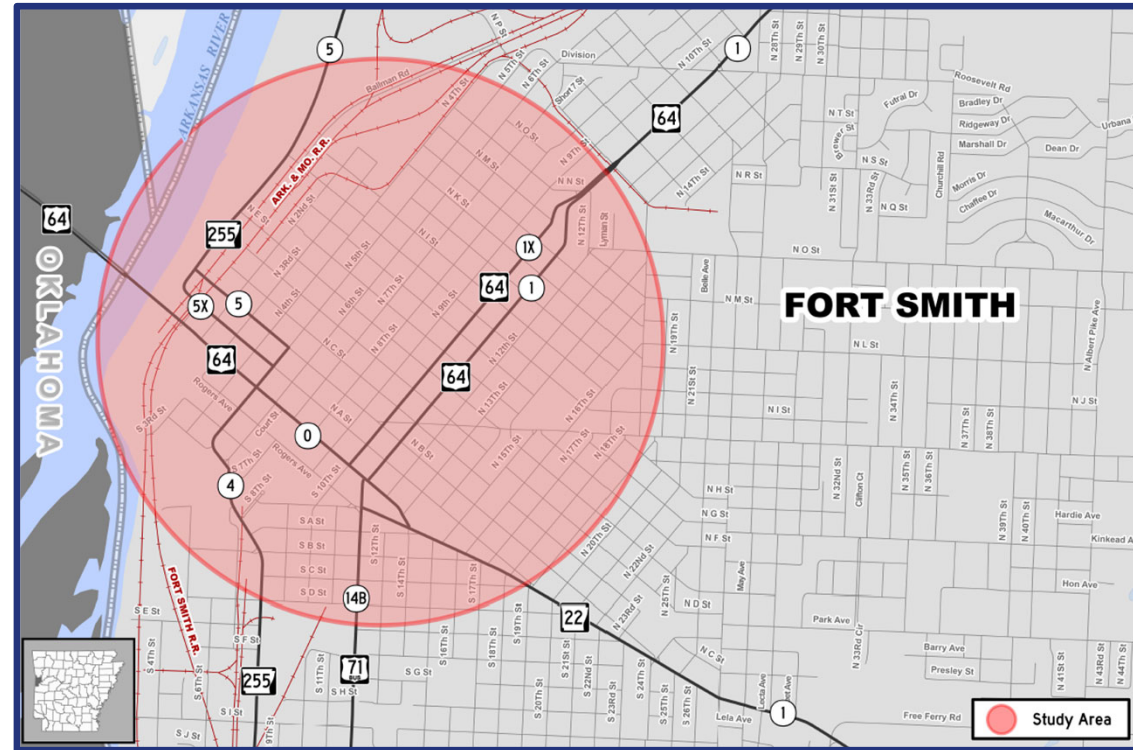
# HIGHWAY 282

## CRAWFORD COUNTY





# HIGHWAY 64 PLANNING STUDY SEBASTIAN COUNTY







**ALMA AREA CHAMBER OF COMMERCE**  
ANNUAL MEMBERSHIP MEETING

**VICE CHAIRMAN KEITH GIBSON**  
ARKANSAS HIGHWAY COMMISSION  
MARCH 17, 2026