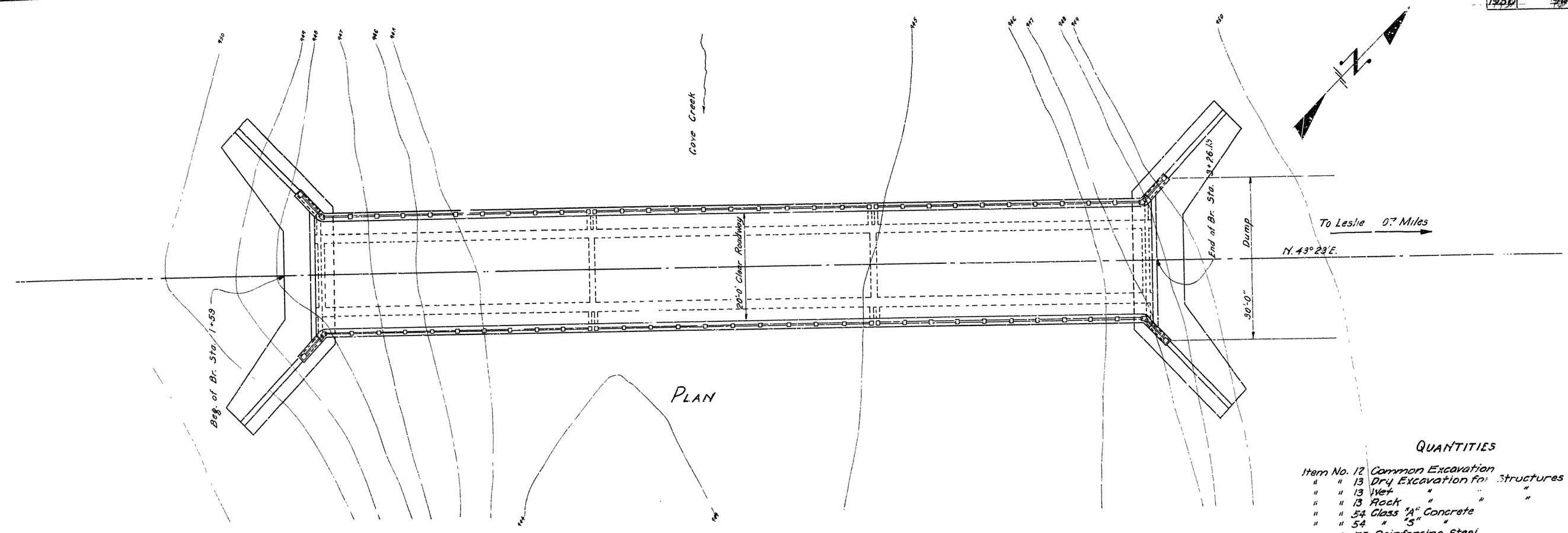


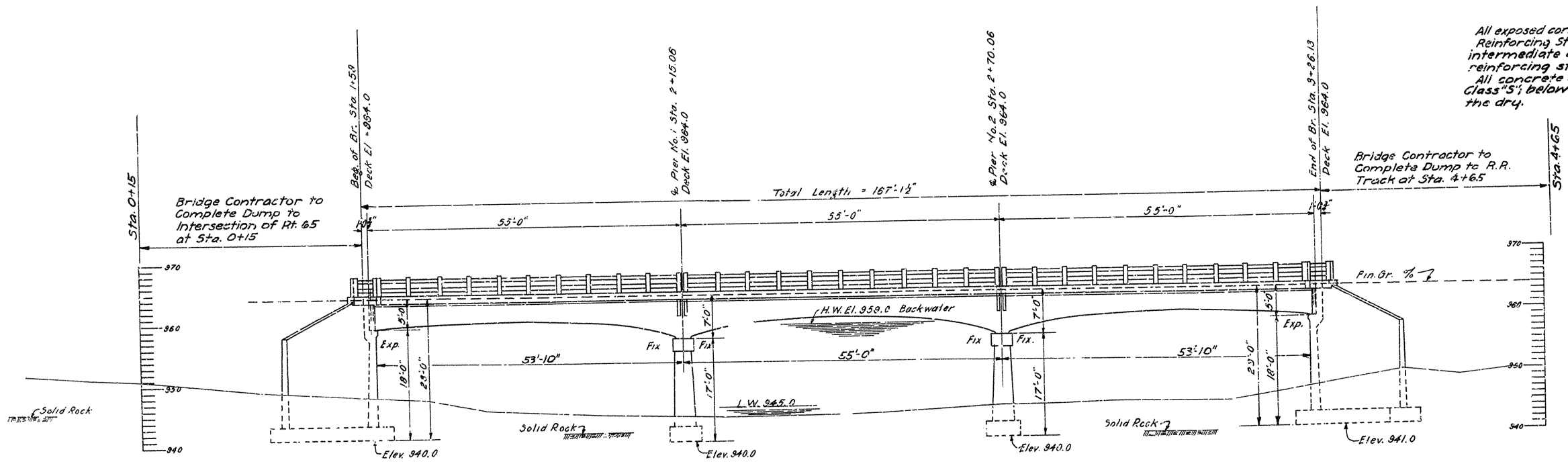
FISCAL YEAR	JOB NO.	SHEET NO.	TOTAL SHEETS
1930	263	9	10



PLAN

QUANTITIES		
Item No.	Description	Quantity
12	Common Excavation	3,400 Cu. Yds.
13	Dry Excavation for Structures	152 "
13	Wet " "	283 "
13	Rock " "	84 "
54	Glass "A" Concrete	285.71 "
54	"S" " "	134.20 "
55	Reinforcing Steel	83,400 Lbs.
74	Concrete Railing for Structures	347 Lin. Ft.

General Notes
All exposed corners to have 3" chamfer unless otherwise noted.
Reinforcing Steel to be deformed bars of structural or intermediate grade. Shop List & Bending Diagrams of reinforcing steel to be submitted before fabrication is begun.
All concrete above top of Column Caps, except Handrail, to be Class "S"; below to be Class "A". All concrete to be poured in the dry.



ELEVATION

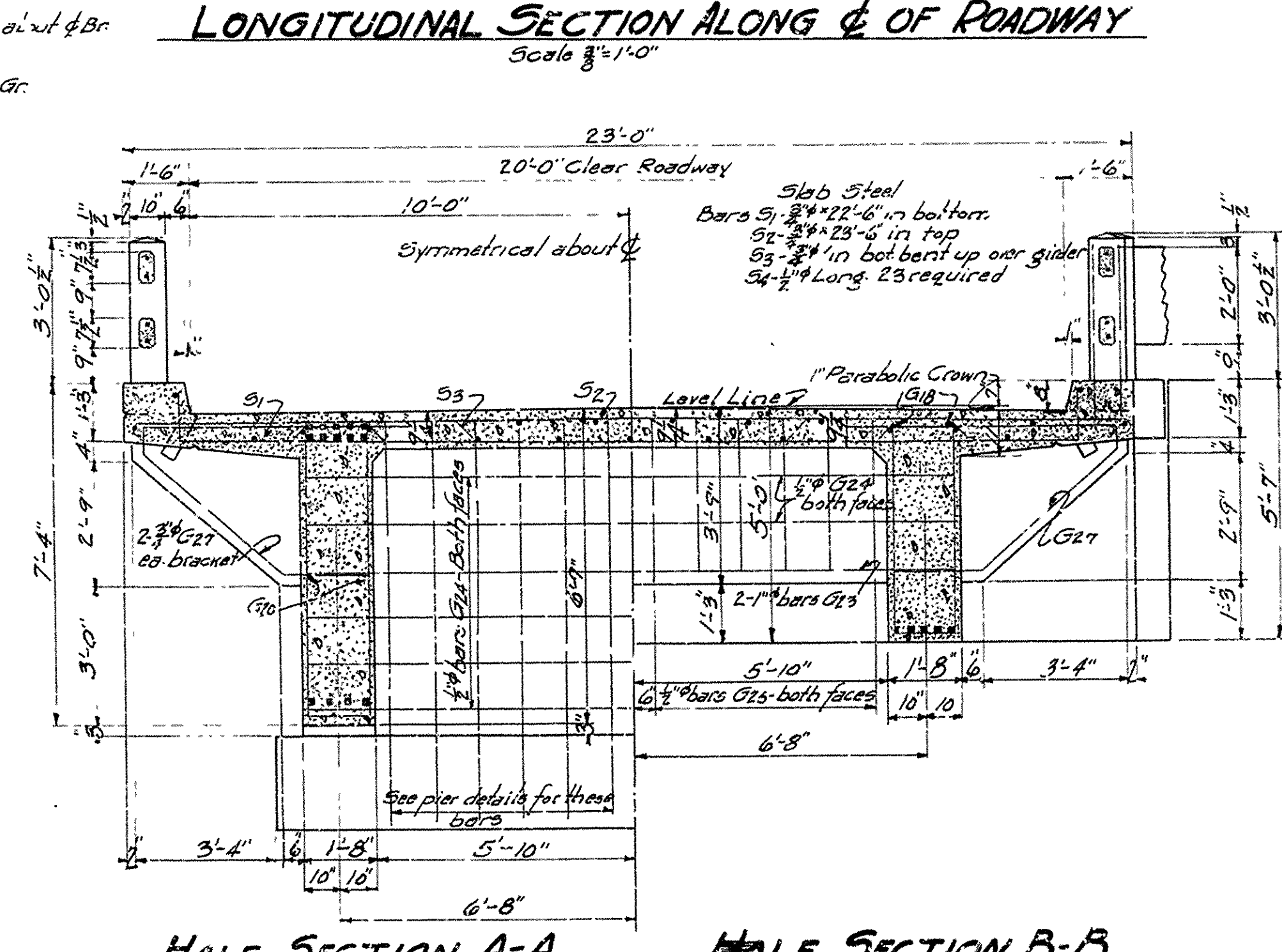
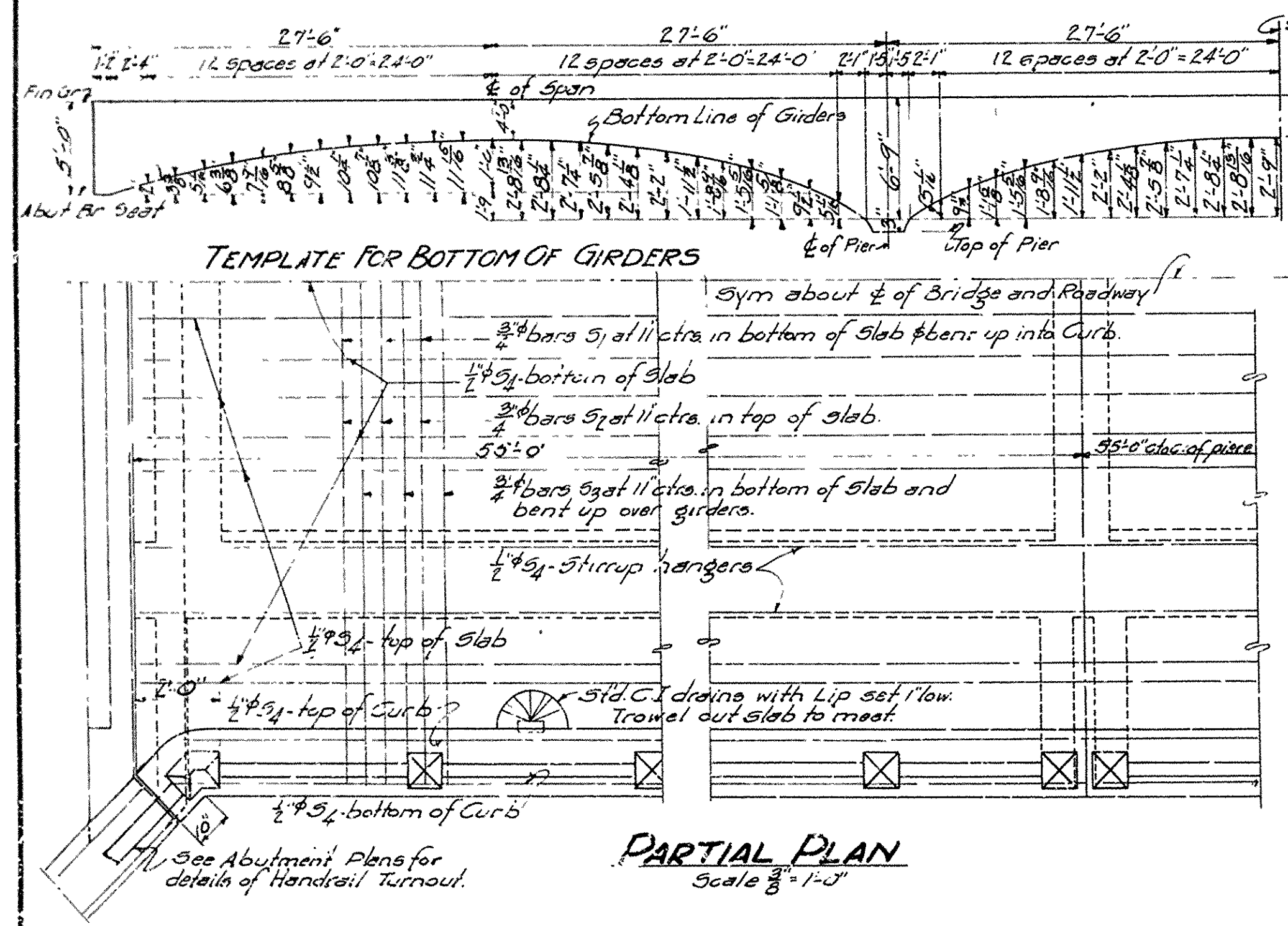
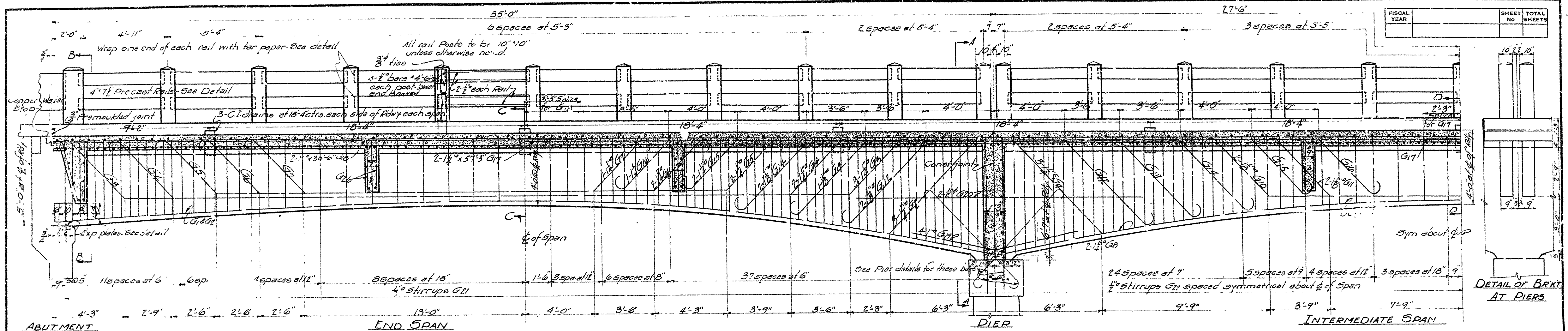
For Details of Superstructure See Dwg. No. 2201
For Details of Abutments See Dwg. No. 2570
For Details of Piers See Dwg. No. 2571

Drainage Area:
35 Sq. Miles Mtns. 50 % Wooded.

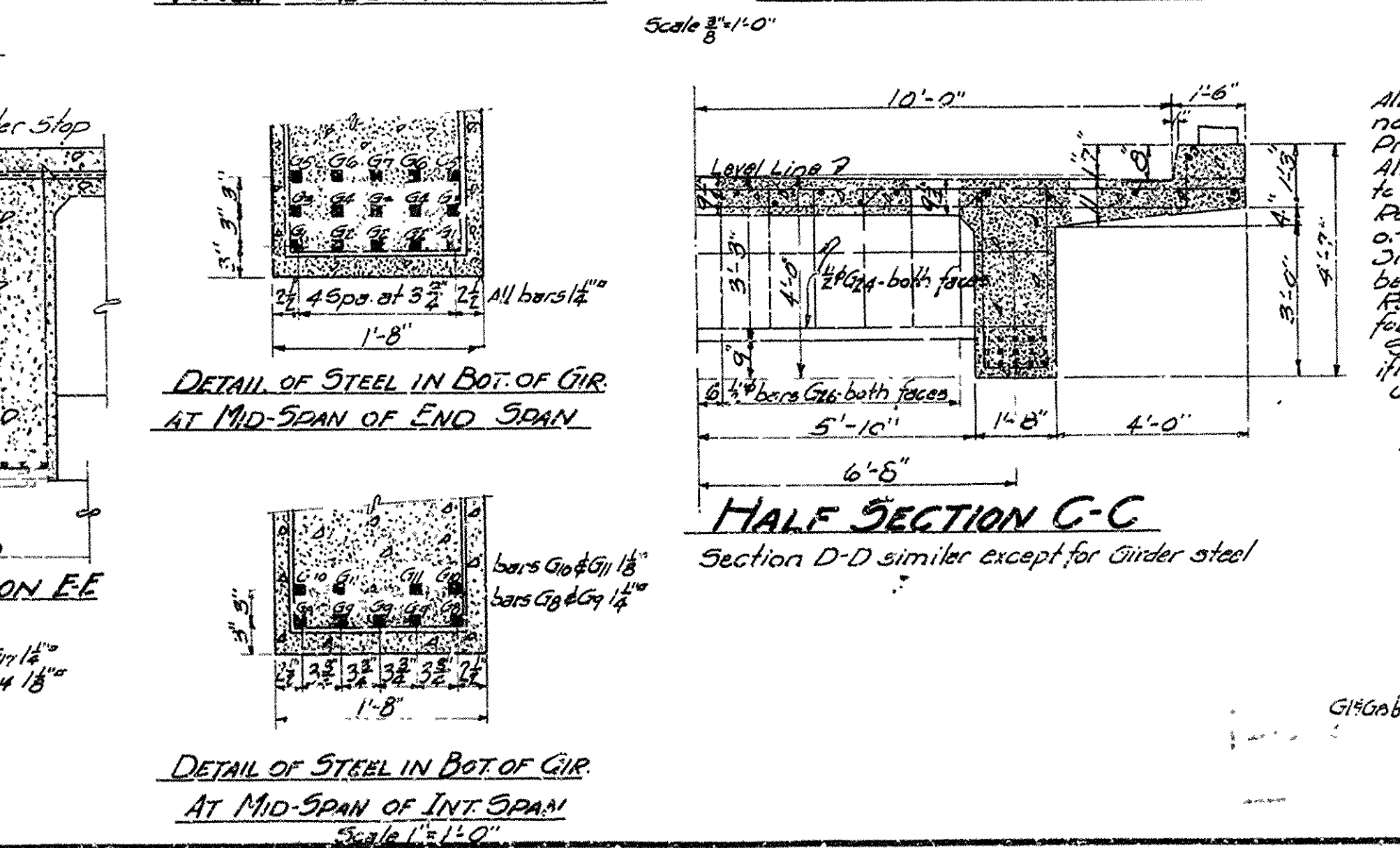
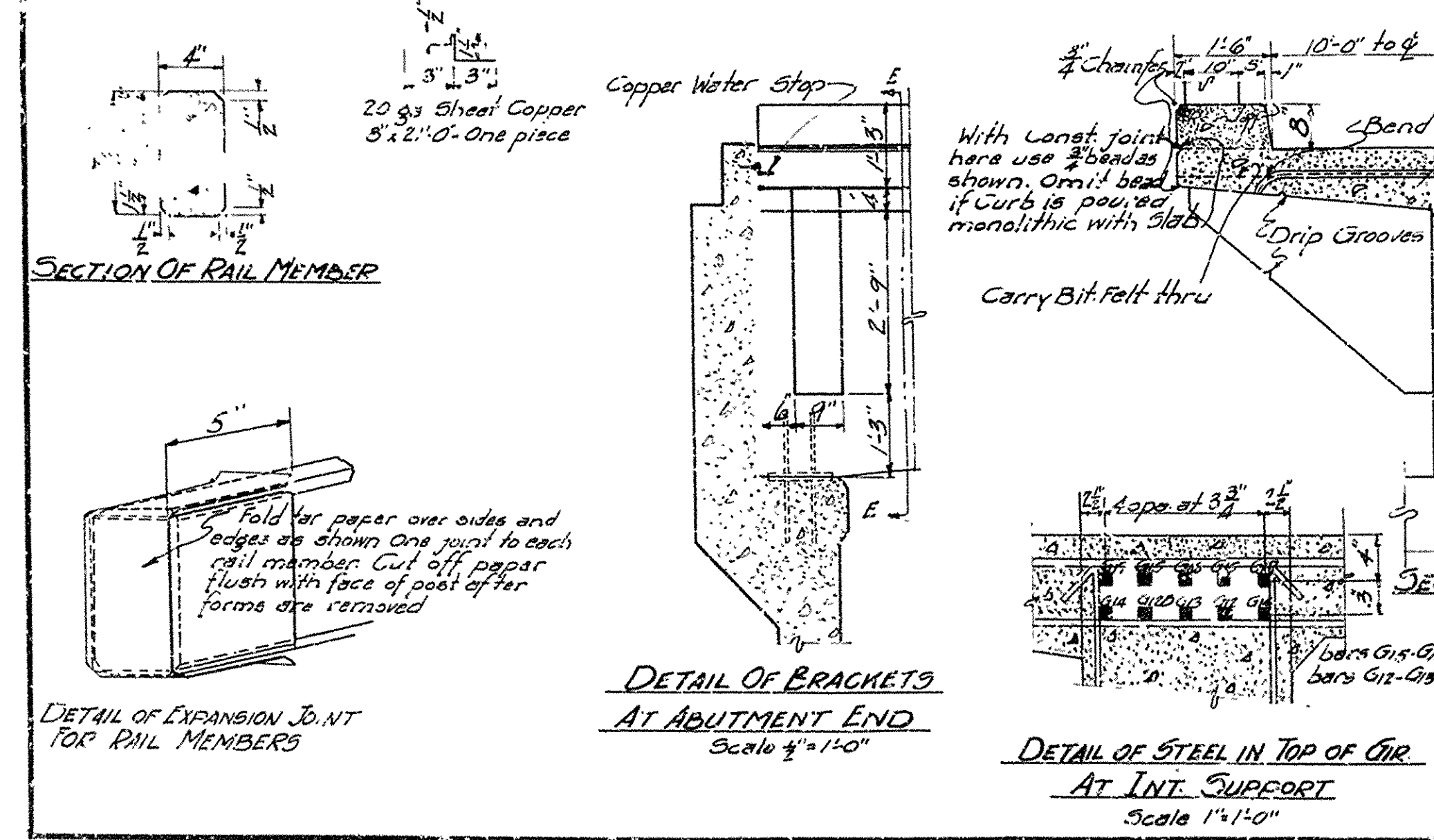
B.M. Elev. 977.92
X on sidewalk Lt.
Sta. 2+20

**LAYOUT OF BRIDGE
OVER COVE CREEK
AT LESLIE ARK.
SEARCY COUNTY**
ROUTE 66 SEC. 18
ARKANSAS STATE HIGHWAY COMMISSION
LITTLE ROCK, ARK.
Drawn By: *Bastin* Date: 2-24-30
Traced By: *Clark* Date: 2-26-30
Checked By: _____ Date: _____
BRIDGE NO. 680 DRAWING NO. 2569
1 in. = 10 ft.

M.B. Bastin
BRIDGE ENGINEER



Mark	Size	Length	Bending Diagram
G1	3/4"	22'-6"	
G2	3/4"	23'-6"	
G3	3/4"	23'-11"	
G4	1 1/4"	50'-5"	
G5	1 1/4"	59'-3"	
G6	1 1/4"	53'-11"	
G7	1 1/4"	47'-5"	
G8	1 1/4"	40'-5"	
G9	1 1/4"	33'-5"	
G10	1 1/4"	27'-8"	
G11	1 1/4"	23'-0"	
G12	1 1/4"	18'-0"	
G13	1 1/4"	13'-0"	
G14	1 1/4"	10'-0"	
G15	1 1/4"	7'-0"	
G16	1 1/4"	4'-0"	
G17	1 1/4"	1'-0"	



GENERAL NOTES

All exposed corners to have 1/2" chamfer unless otherwise noted.
Precast Concrete Handrail to be 1:1.2 mix. Max. agg. 3/4".
All concrete above top of Pier Caps, except handrails to be Class C.
Reinforcing Steel to be deformed bars of structural steel.
Intermediate Girders, Slabs, Lateral and Bending Diagrams must be submitted by the Bridge Contractor before fabrication is begun.
Roadway Drains and Expansion Devices to be paid for at Unit Price bid for Reinforcing Steel.
Specifications: Arkansas Road and Bridge Specifications adopted May 30, 1925 and revised.
Unit stresses: $f_s = 16,000 \text{ psi}$; $f_c = 1500 \text{ psi}$; $n = 15$; H_s loading.
All dimensions shown are center to center of bars.

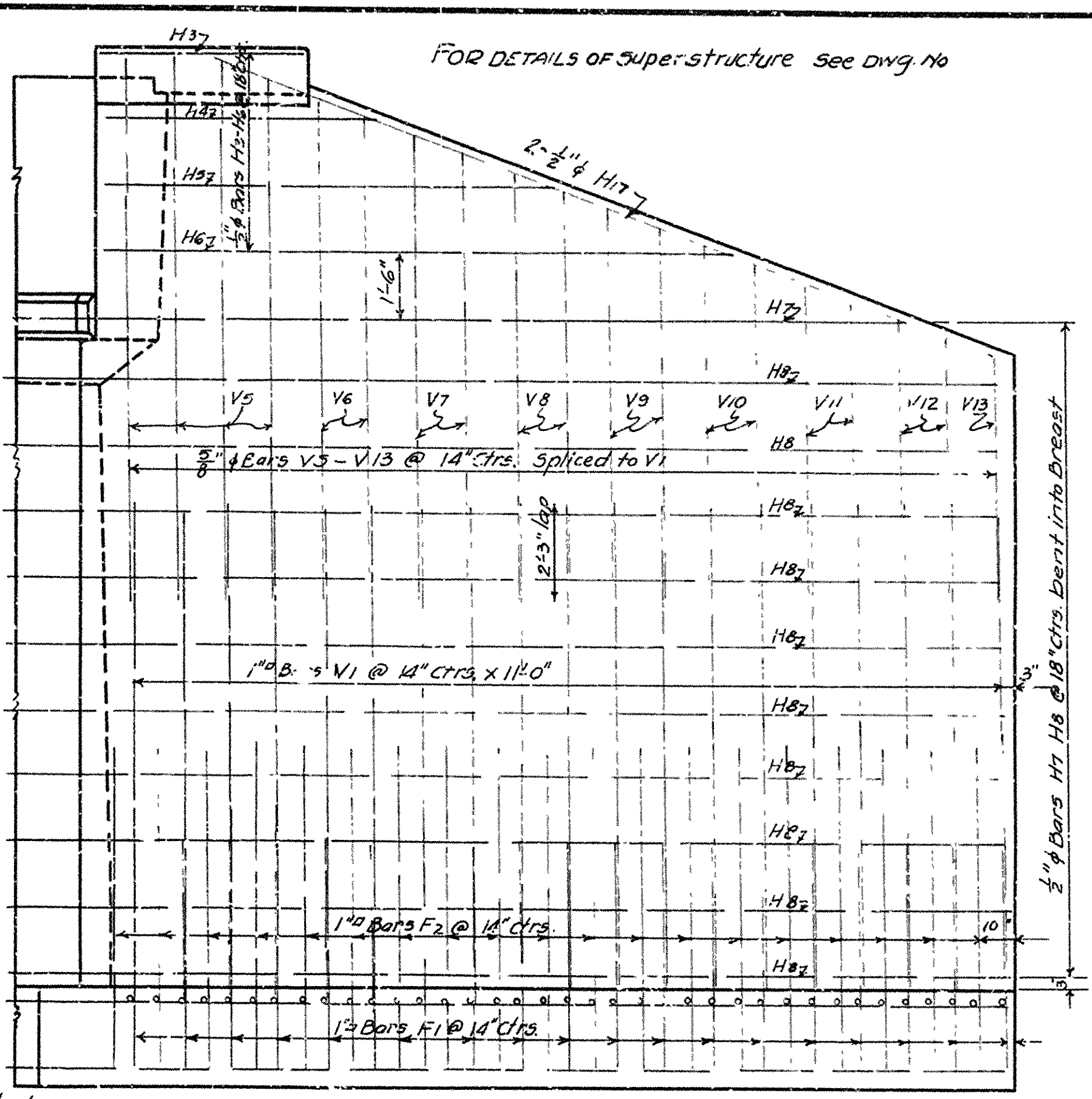
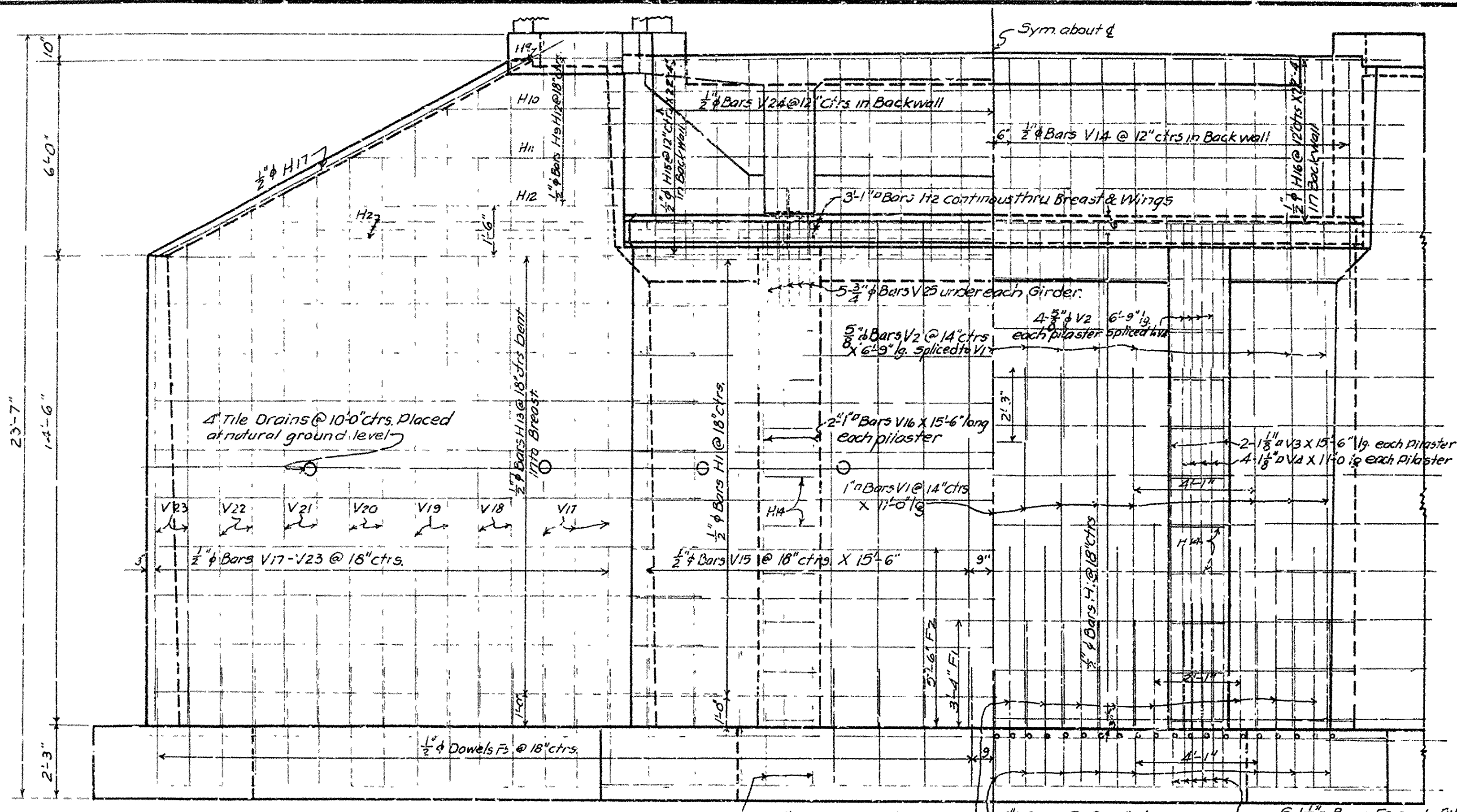
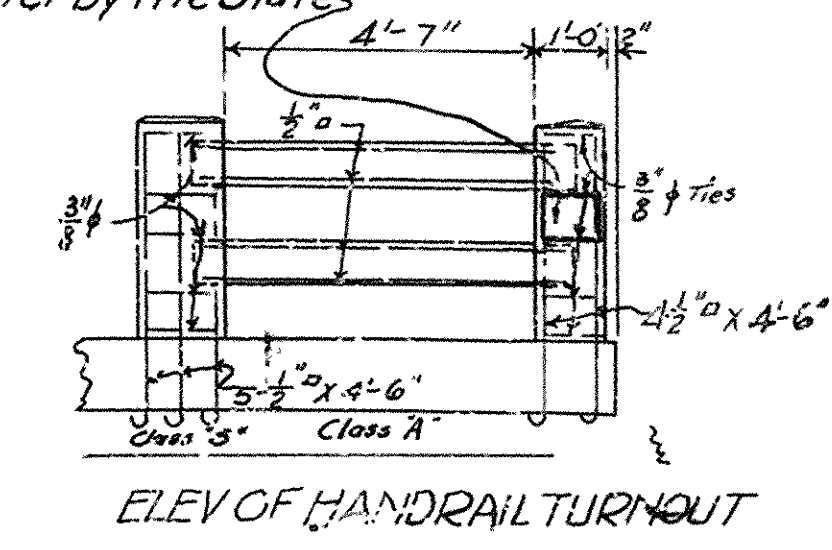
DETAILS OF 3-55'-0" CONTINUOUS R.C.D. GIRDER SPANS
2 GIRDER TYPE
20'-0" CLEAR ROADWAY
ARKANSAS STATE HIGHWAY COMMISSION
LITTLE ROCK, ARK.

Drawn By: *LB* Date: 2-12-30
Traced By: *General* Date: 3-5-30
Checked By: _____ Date: _____
BRIDGE ENGINEER

BRIDGE NO. _____
DRAWING NO. 2101

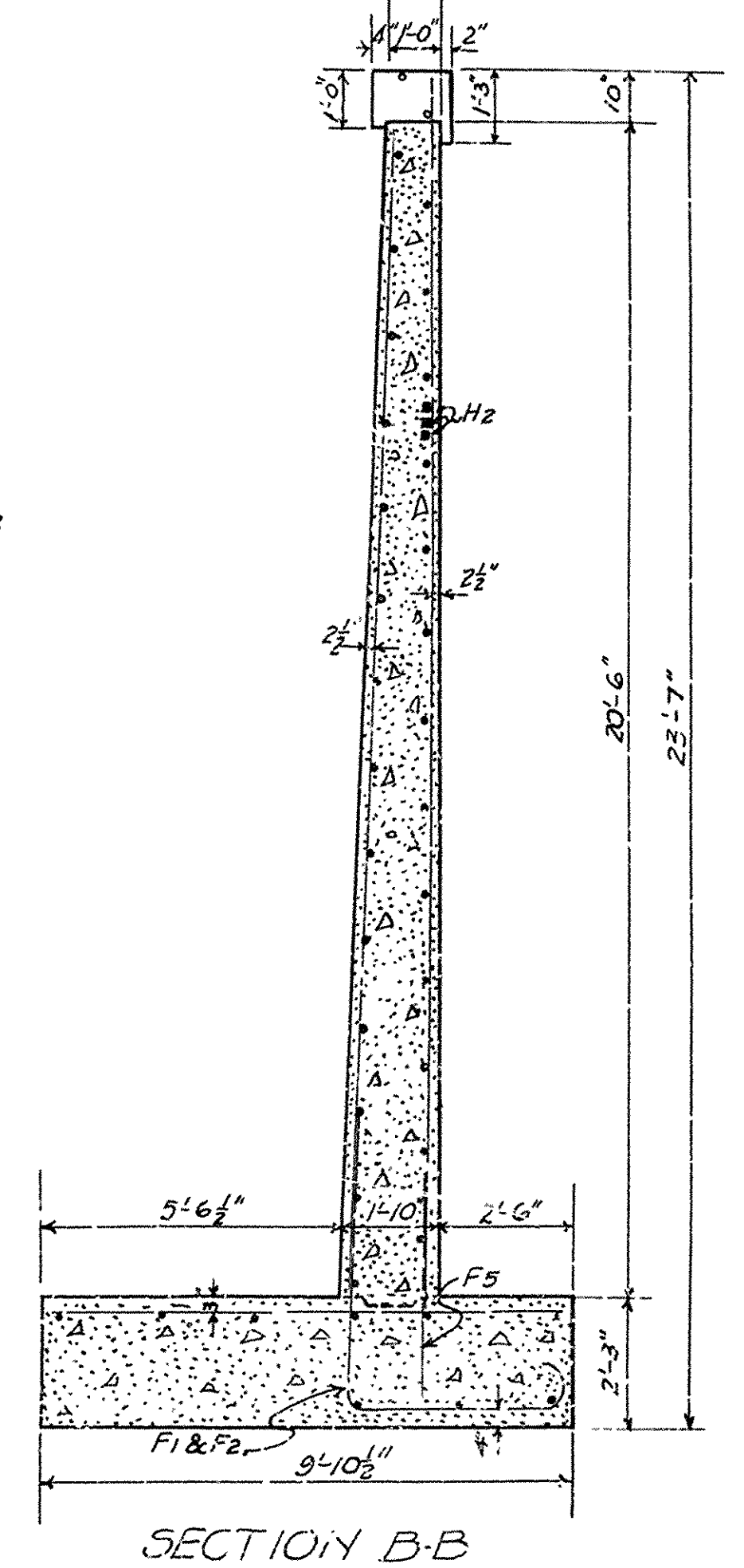
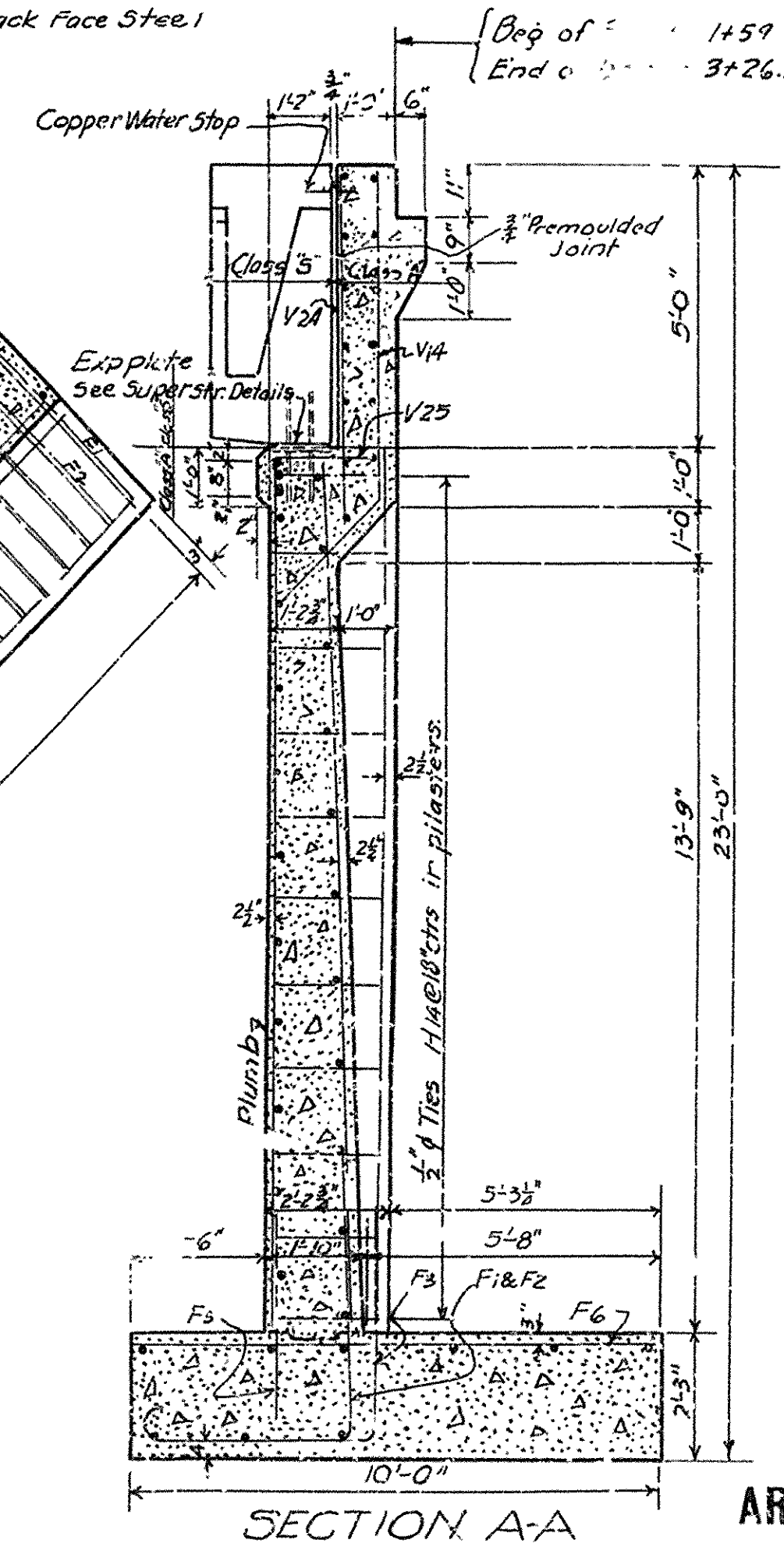
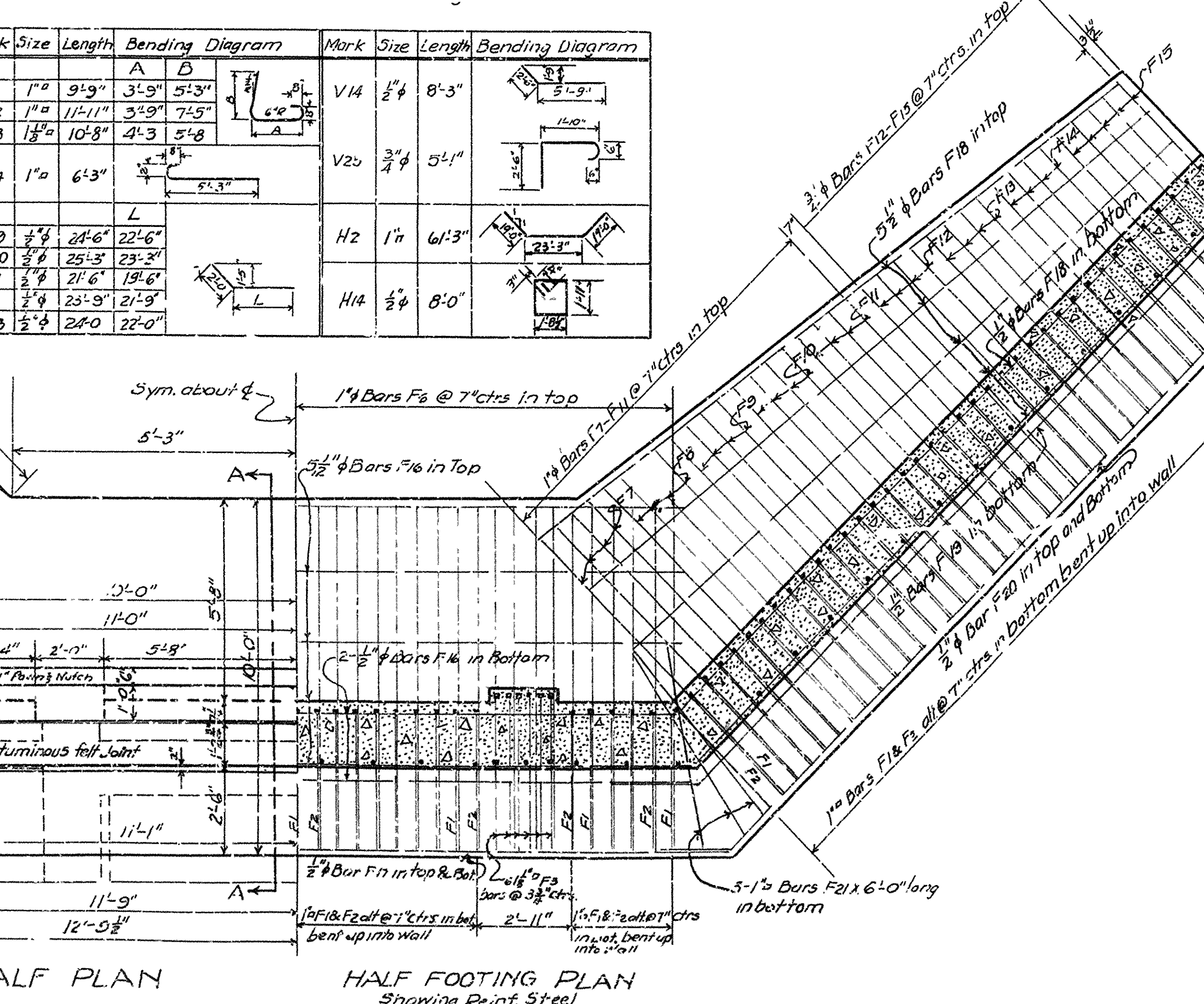
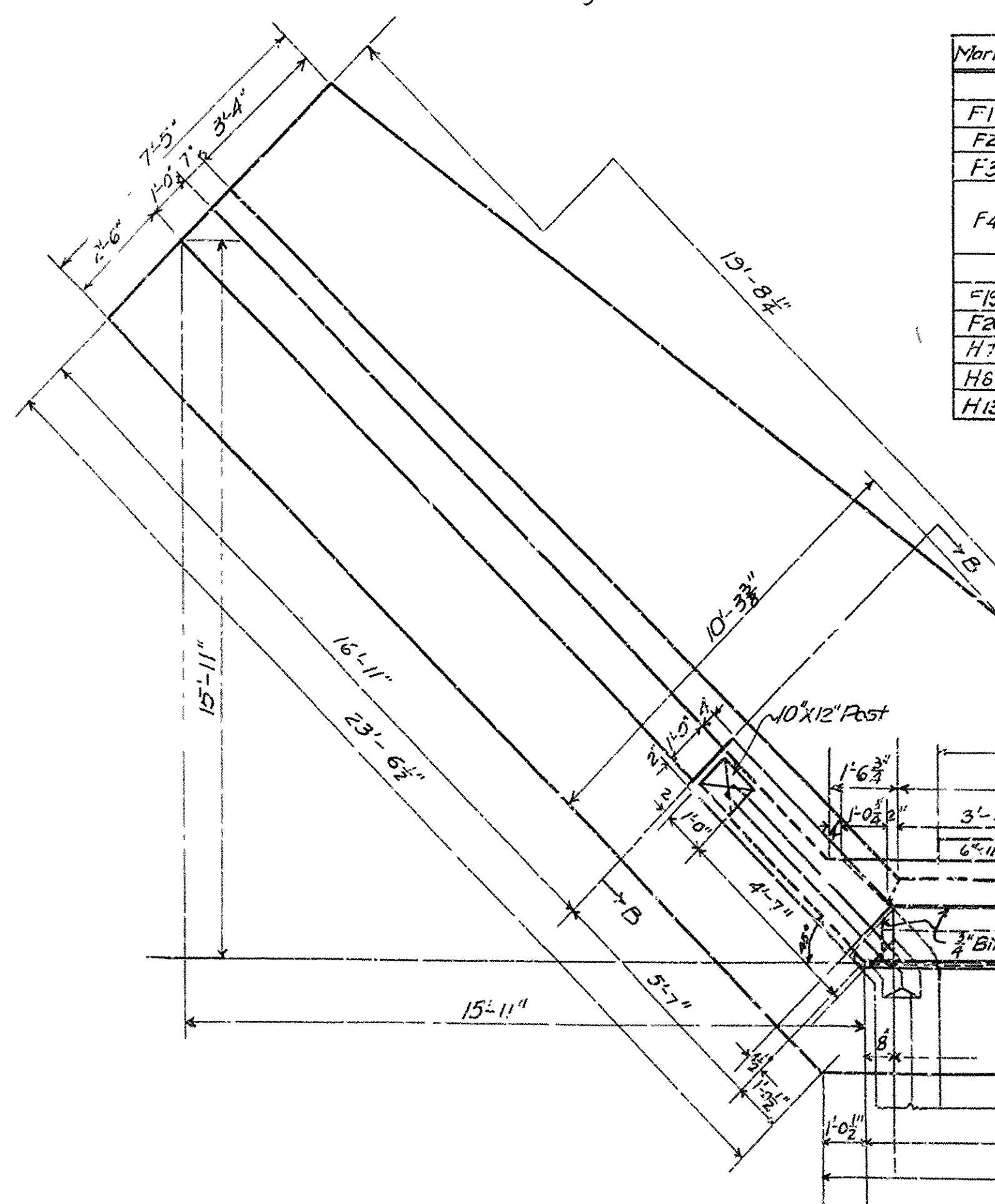
FISCAL YEAR	Job No.	SHEET TOTAL
1930	963	7 9

Name Plates on Right Hand Turnouts only to be furnished to the Contractor by the State.



ELEV. OF WING
Showing Back Face Steel

Mark	Size	Length	Bending Diagram	Mark	Size	Length	Bending Diagram
F1	1"φ	9'-9"		V14	1/2"	8'-3"	
F2	1"φ	11'-11"		V20	3/4"	5'-11"	
F3	1 1/2"	10'-8"		H2	1"	6'-3"	
F4	1"φ	6'-3"		H14	1/2"	8'-0"	
F19	1/2"	24'-6"					
F20	1/2"	25'-3"					
H7	1/2"	21'-6"					
H8	1/2"	23'-9"					
H13	1/2"	24'-0"					

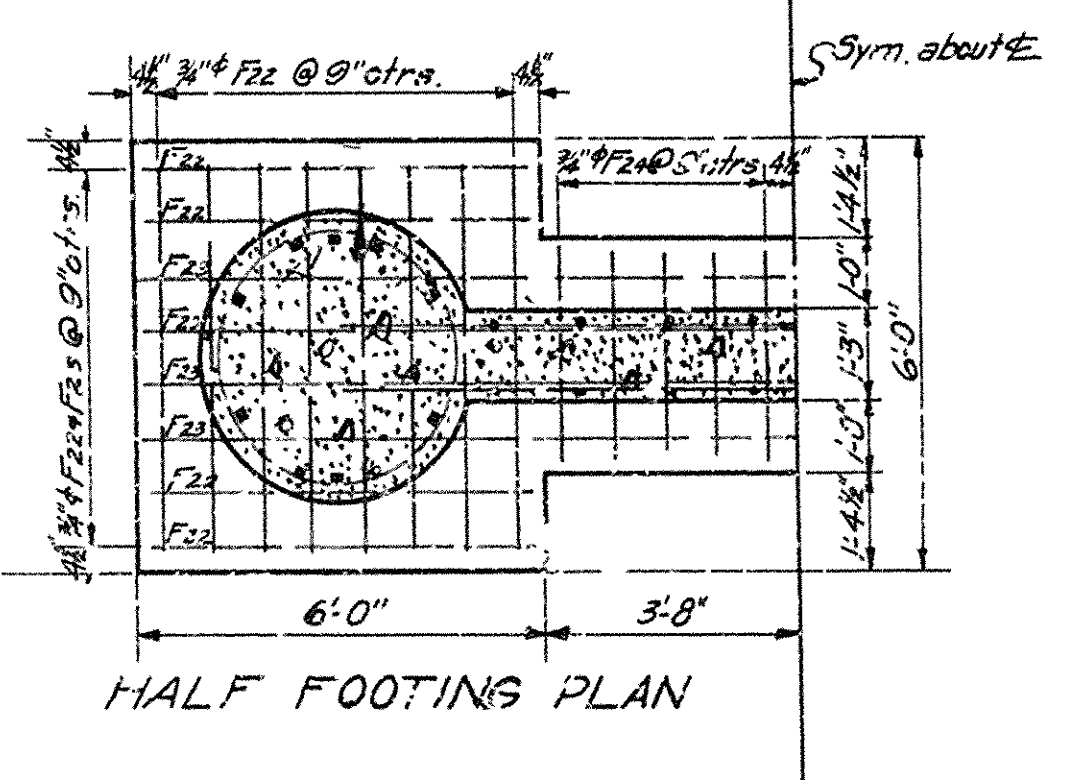
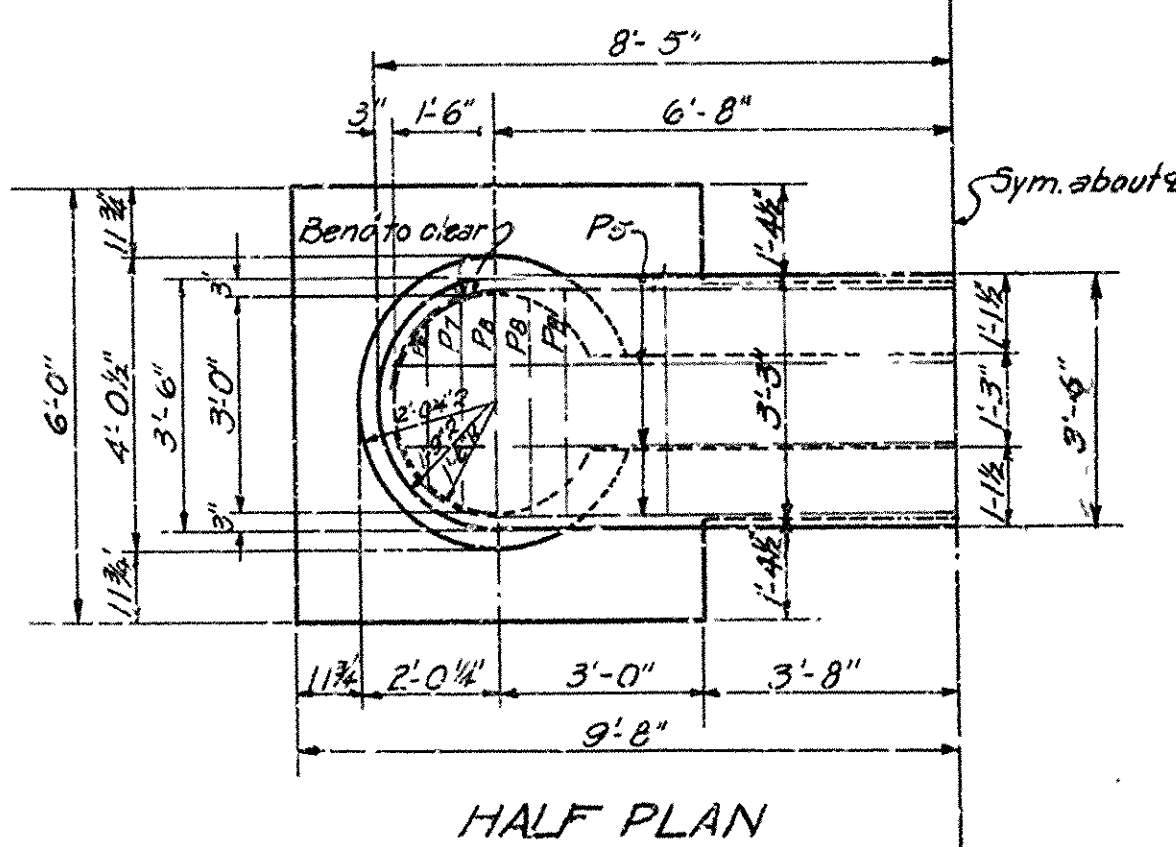
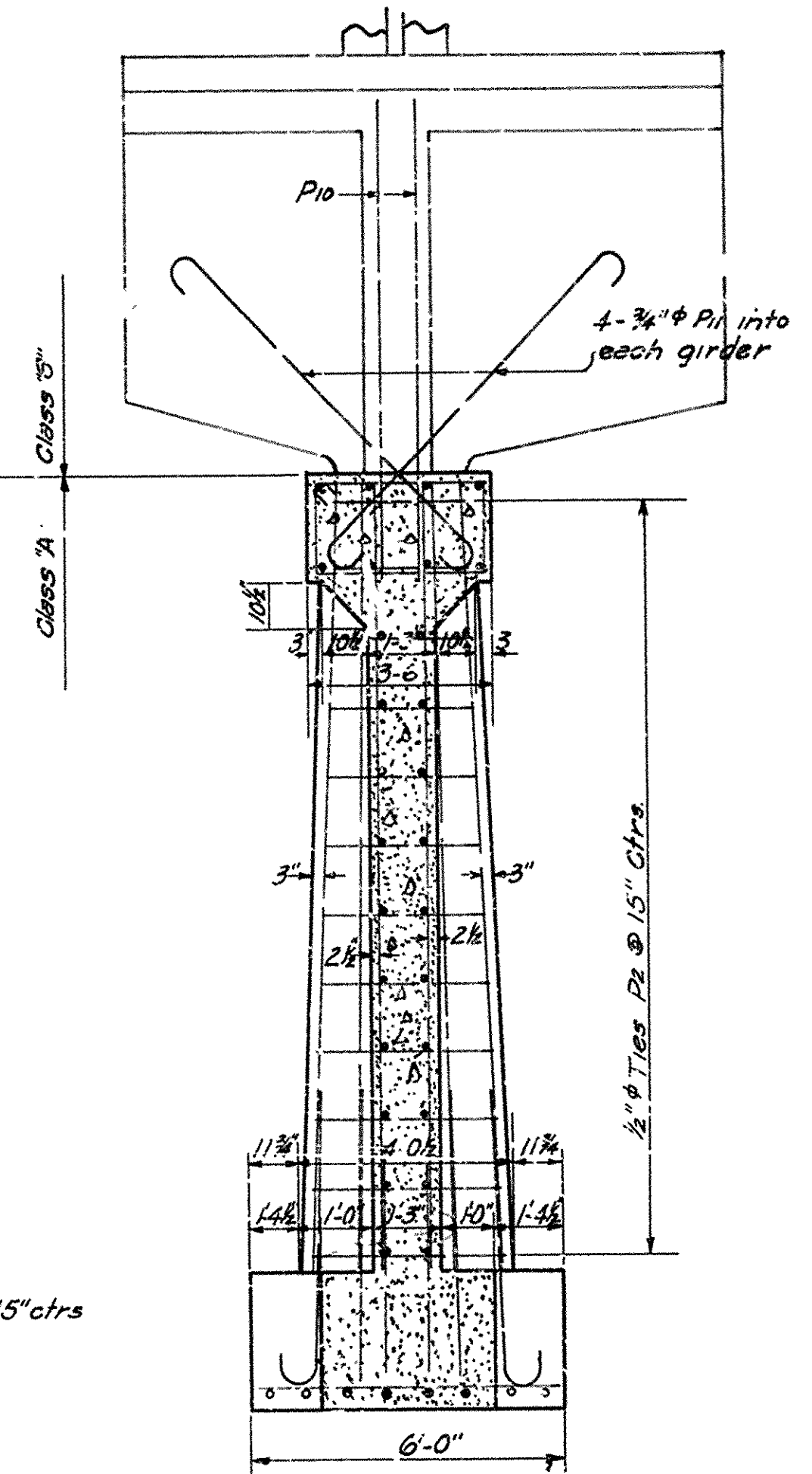
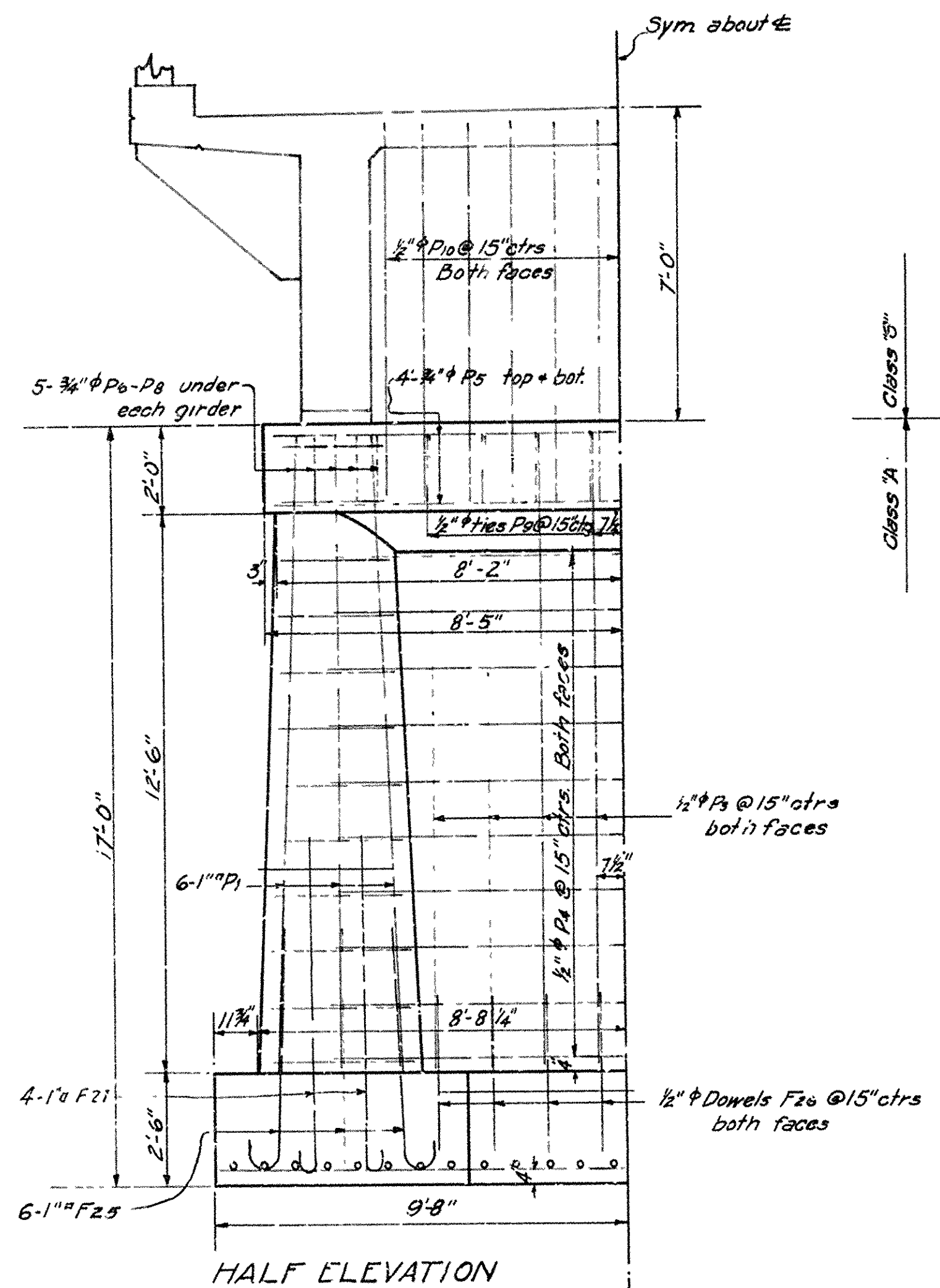


DETAILS OF ABUTMENTS
FOR BRIDGE OVER COVE CREEK
AT LESLIE, ARKANSAS
SEARCY CO.
ROUTE SEC.
ARKANSAS STATE HIGHWAY DEPARTMENT
LITTLE ROCK, ARK.
Drawn By: *HB* Date: 2-21-30
Traced By: *MKN* Date: 2-27-30
Checked By: _____ Date: _____
Scale: 3/8" = 1'-0" ft.
BRIDGE NO. _____ DRAWING NO. 2570

M.B. Sawyer
BRIDGE ENGINEER

FISCAL YEAR	Job No.	SHEET No.	TOTAL SHEETS
1930	963	8	9

For Details of Superstructure see Dwg No.



MARK	SIZE	LENGTH	BENDING DIAGRAM
F ₂₅	1" ϕ	6'-6"	
P ₂	1/2" ϕ	Varies by 1/4" from 1'-0" to 3'-7 1/2"	
P ₀	3/4" ϕ	9'-1"	
P ₇	3/4" ϕ	10'-1"	
P ₈	3/4" ϕ	10'-5"	
P ₉	1/2" ϕ	10'-5"	
P ₁₁	3/4" ϕ	3'-6"	
F ₂₇	1" ϕ	8'-6"	

DETAILS OF PIERS
FOR BRIDGE OVER COVE CREEK
AT LESLIE, ARKANSAS
SEARCY CO.

ROUTE 66 SEC. 18
ARKANSAS STATE HIGHWAY COMMISSION
LITTLE ROCK, ARK.
Drawn By: *W.B. Hanner* Date: 2-24-30
Traced By: *E.L. Hanner* Date: 2-25-30
Checked By: _____ Date: _____
BRIDGE NO. 680 DRAWING NO. 2571
Scale: 3/8 in. = 1 ft.