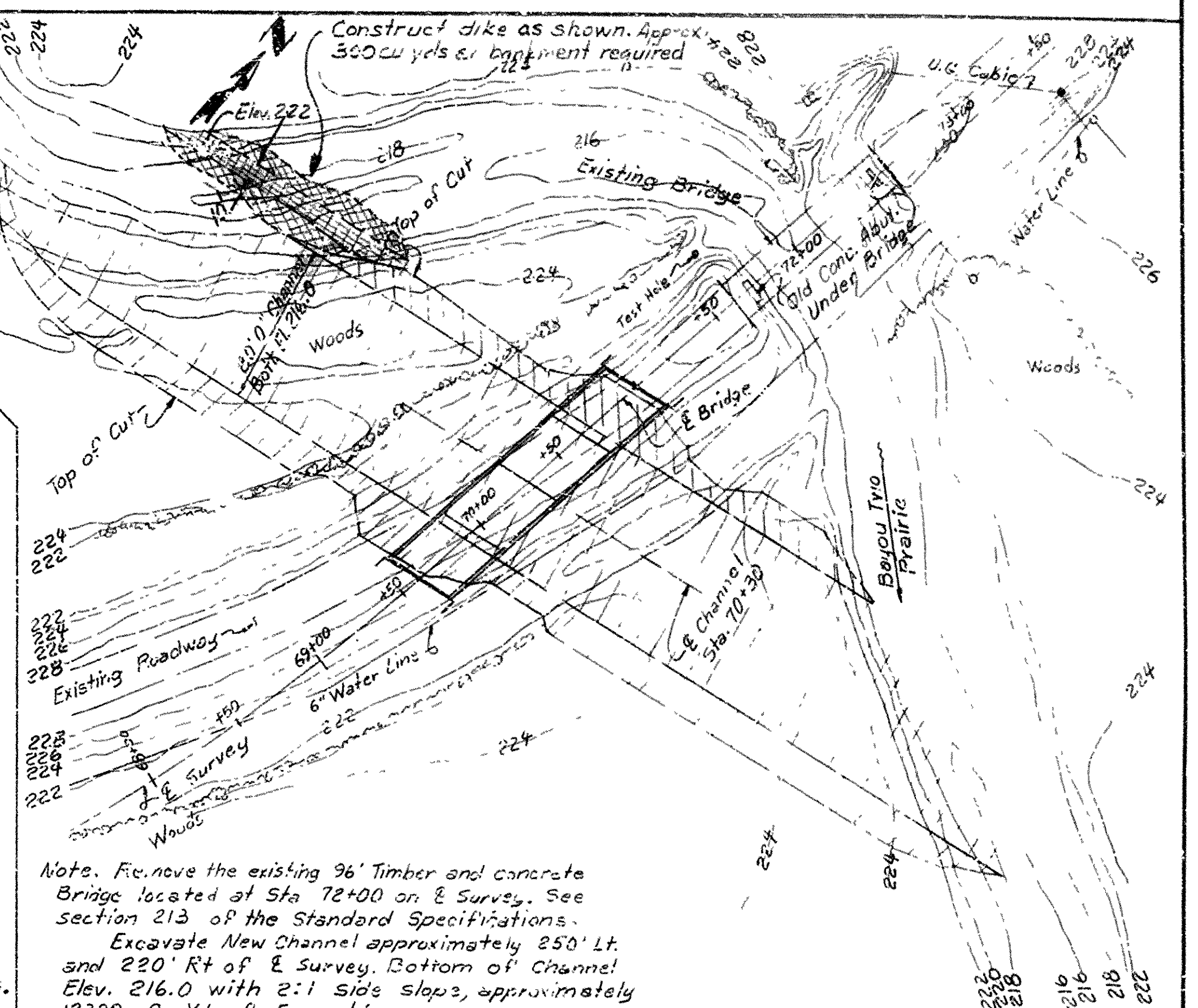
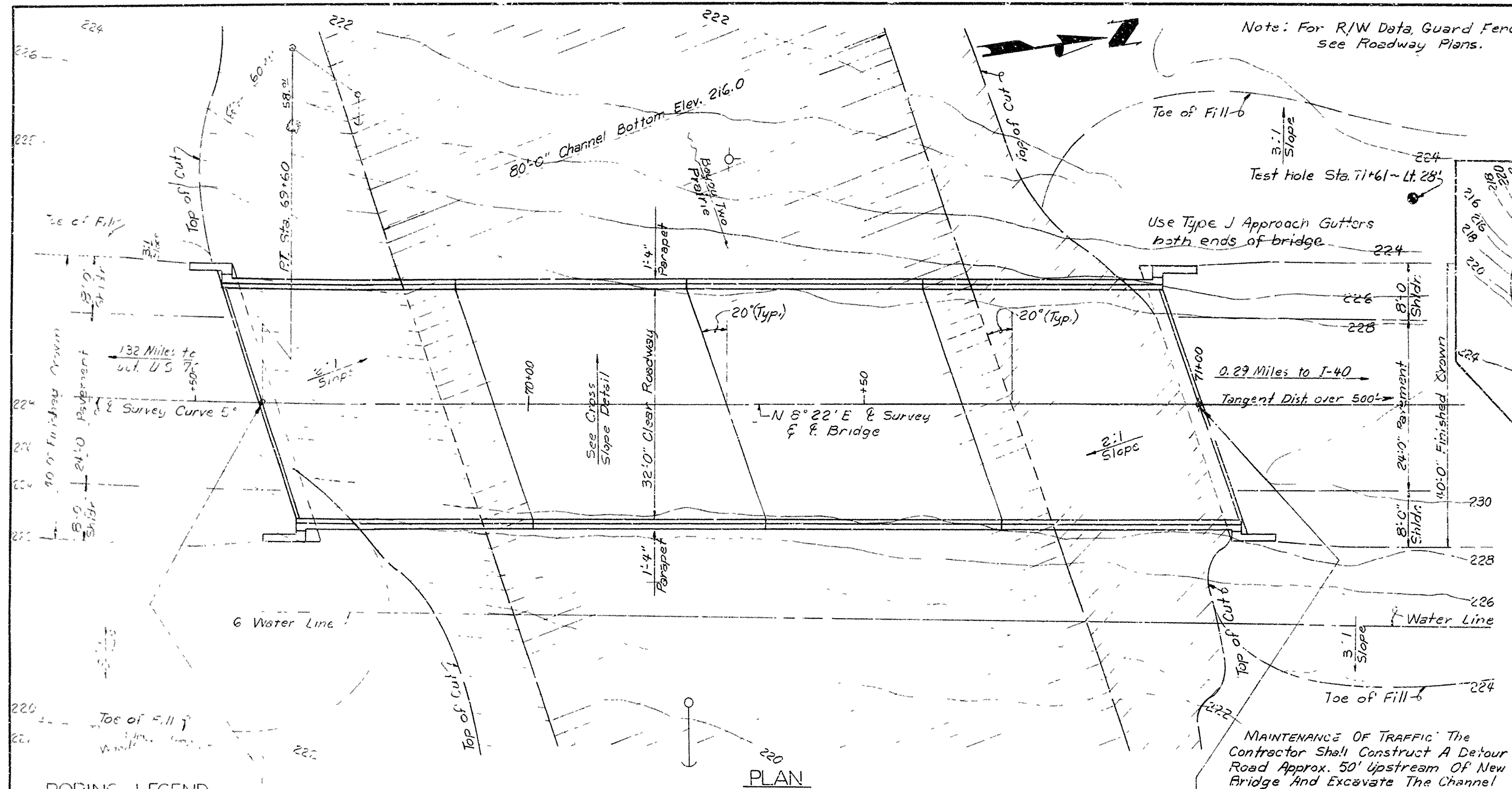







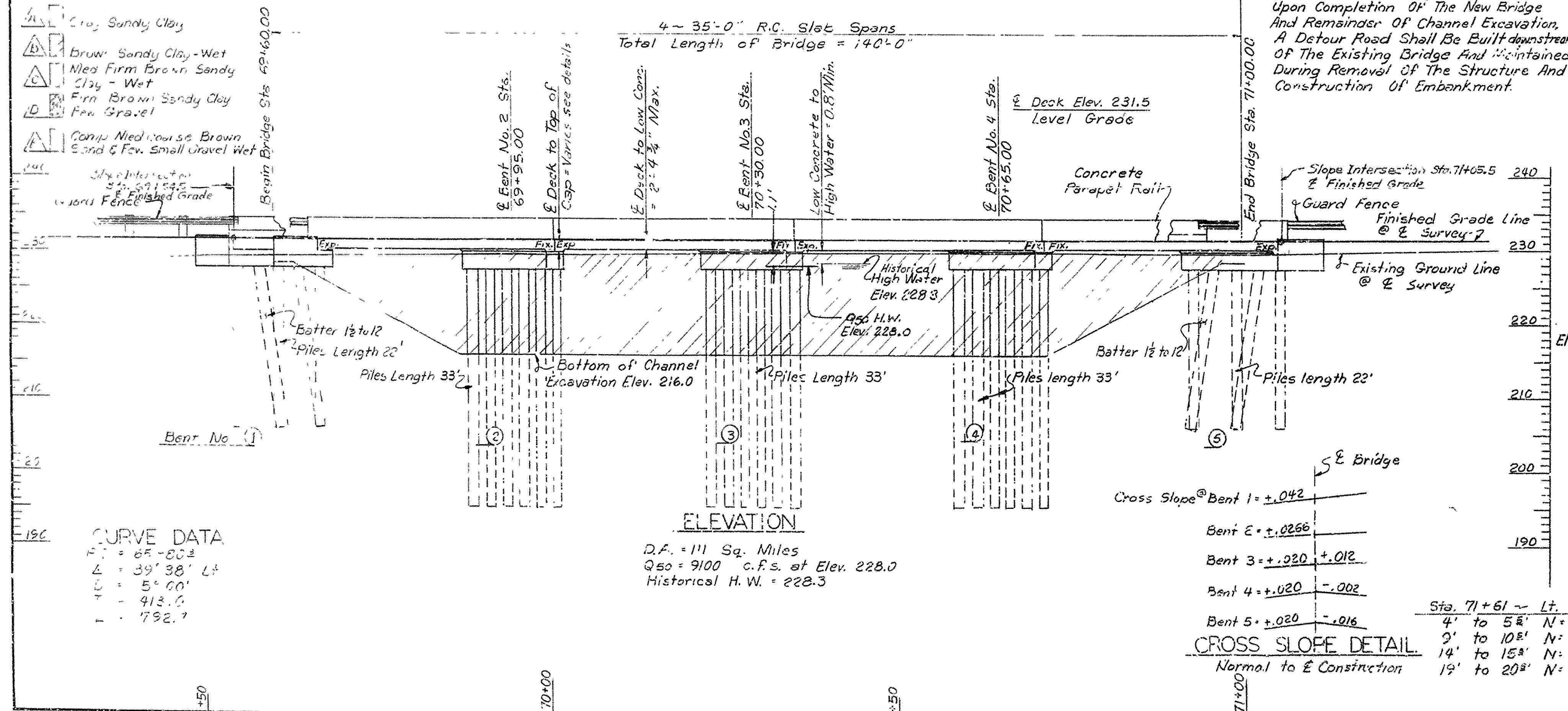
DATE REVISED	DATE FILMED	DATE REVISED	DATE FILMED	FED. ACID NO.	STATE	FED. AID NO.	FISCAL YEAR	SHEET NO.	TOTAL SHEETS
				6	ARK.				
				JOB NO.		6952	14	42	

S ① 5537 Layout 19062



BORING LEGEND

- A  Clay, Sandy Clay
 B  Brown Sandy Clay - Wet
 C  Mixed Firm Brown Sandy Clay - Wet
 D  Firm Brown Sandy Clay
 E  Fine Gravel



LOCATION SKETCH

Scale 1" = 50'

GENERAL NOTES

BENCH MARK - N.I.S. COMB. POLE 42' LT. STA. 72+49, ELEV. 224.65.

ALL PILING SHALL BE 16" PRECAST CONCRETE AND SHALL BE DRIVEN WITH AN APPROVED AIR, STEAM, OR DIESEL HAMMER TO A MINIMUM CAPACITY OF 44 TONS PER PILE AND TO A MINIMUM PENETRATION OF 20 FEET BELOW THE GROUND LINE. LENGTHS OF PILING SHOWN ARE ASSUMED FOR ESTIMATING QUANTITIES ONLY. ACTUAL LENGTHS ARE TO BE DETERMINED IN THE FIELD. DRIVE ONE 36" TEST PILE IN BENT NO. 2. PILES IN END BENTS SHALL BE DRIVEN AFTER EMBANKMENT TO SUBGRADE IS IN PLACE

ALL CONCRETE IN THE SUPERSTRUCTURE SHALL BE CLASS S(AE). ALL CONCRETE IN THE SUBSTRUCTURE SHALL BE CLASS S AND SHALL BE POURED IN THE DRY. ALL EXPOSED CORNERS SHALL BE CHAMFERED 3/4" UNLESS OTHERWISE NOTED.

FOR DETAILS OF END BENTS, SEE DWG. NO. 18063
FOR DETAILS OF INTERMEDIATE BENTS, SEE DWG. NO. 18063
FOR DETAILS OF SUPERSTRUCTURE, SEE DWG. NO. 18064
FOR DETAILS OF PRECAST CONCRETE PILING, SEE DWG. NO. 2382.

SPECIFICATIONS: ARKANSAS STATE HIGHWAY COMMISSION STANDARD SPECIFICATIONS FOR HIGHWAY CONSTRUCTION, EDITION OF 1972.

DESIGN SPECIFICATIONS: AASHTO 1969

LIVE LOADING: HS26

UNIT STRESSES: CLASS S AND S(AE) CONCRETE (N-HC) 1,200 PSI
REINFORCING STEEL 20,000 PSI

0,000 PSI LAYOUT OF BRIDGE
OVER BAYOU TWO PRAIRIE
LONOKE -- 1-40 BRIDGES & APPRS.
LONOKE COUNTY
ROUTE 31 SEC. 3

ARKANSAS STATE HIGHWAY COMMISSION

LITTLE ROCK, ARK

DRAWN BY: D.P.H. DATE: 8 DEC 72

TRACED BY: _____ DATE: _____

CHECKED BY: JCD DATE: 12 Dec 72

BRIDGE NO. 5508

DRAWING NO. 18062

DATE REVISED	DATE FILMED	DATE REVISED	DATE FILMED	FED. ROAD NO.	STATE	FED. AID PROJ. NO.	FISCAL YEAR	SHEET NO.	TOTAL SHEETS
				6	ARK.			15	42
				JCS NO.	6952			15	42
				5508	BENT DTL'S			18063	

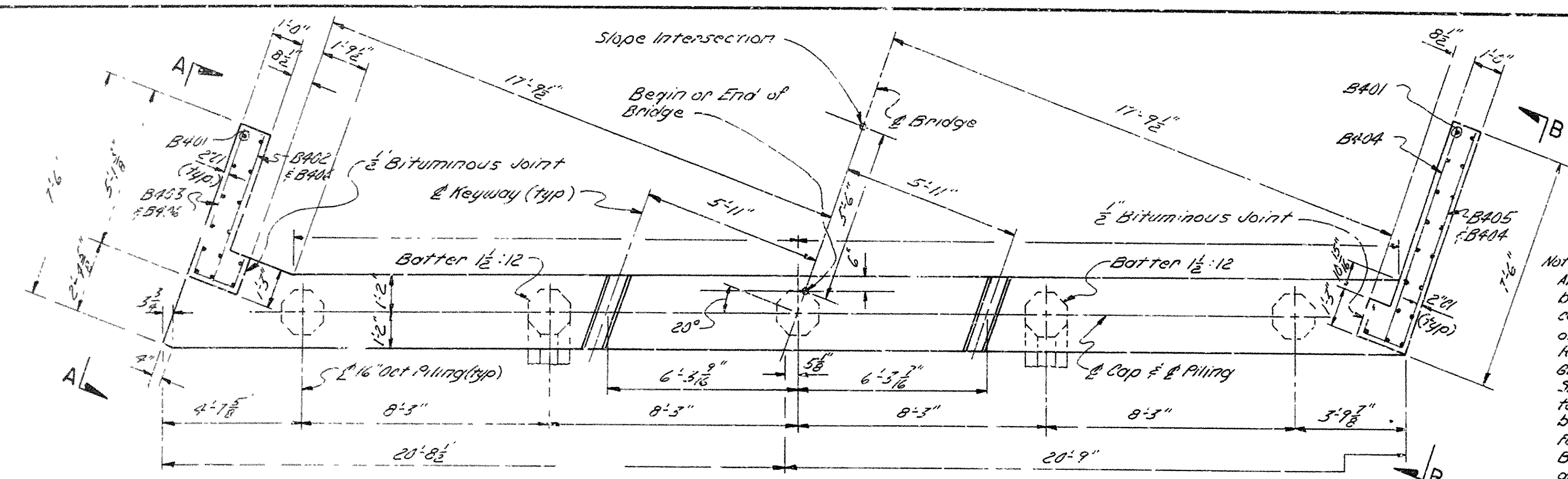
BAR LIST PER BENT

MK	No. Req'd	Length	A	B	P. 4 Dia	Bending Diagrams
B401	32	5'-9"			5/16"	
B402	2	4'-9"			5/16"	
B403	2	6'-10"	4'-9"	11"	2"	
B404	8	7'-2"			5/16"	
B405	2	4'-5"	7'-2"	11"	2"	
B406	6	6'-5"			5/16"	
B407	45	8'-10"	2'-0"	2'-2"	2"	
B408	15	18	6'-5"	2'-0"	2'-2"	
B409	4	21'-5"			5/16"	
B410	*	2'-6"			5/16"	
B411	4	19'-8"			5/16"	
B601	6	42'-5"	41'-1"	6"	4 1/2"	
B602	6	41'-1"			5/16"	
B603	6	39'-0"	37'-8"	6"	4 1/2"	
B604	6	37'-9"			5/16"	

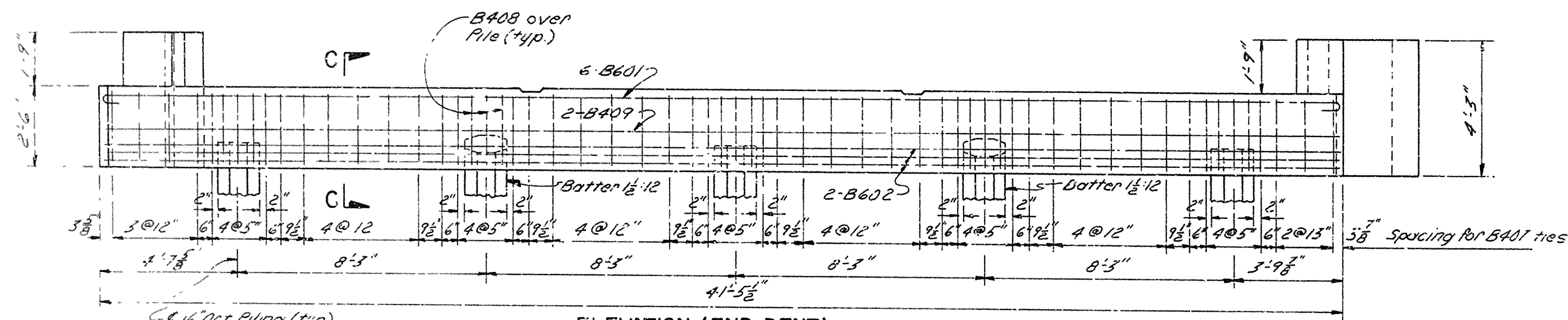
* 26 Fix-Exp Bent
52 Fix-Fix Bent

Dimensions are out to out of bars

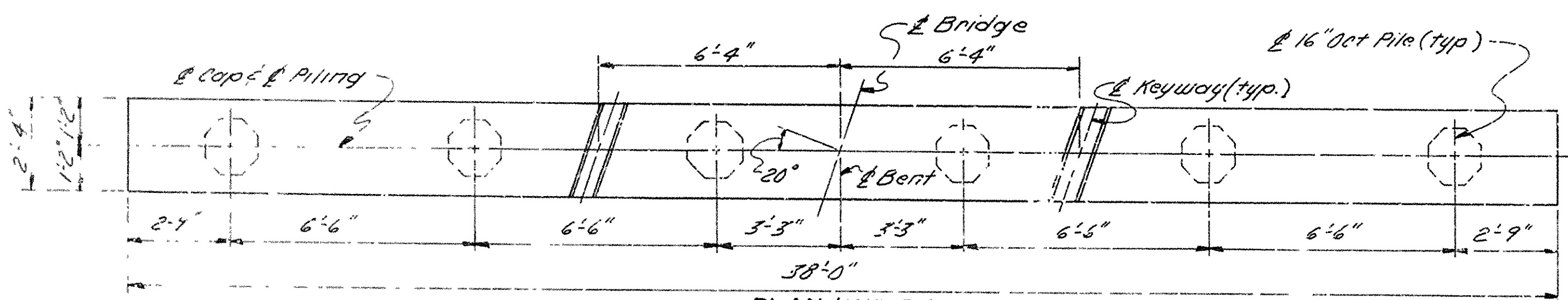
Note:
All concrete to be Class 5 and shall be poured in the dry. All exposed corners to be chamfered $\frac{3}{8}$ " unless otherwise noted.
Reinforcing Steel take ASTM A615, Grade 40.
Slope List and Bending Diagrams are to be submitted and approval secured before fabrication is begun.
For Piling, see Layout of Bridge.
Bituminous Joints shall be measured and paid for as Class 5 concrete.



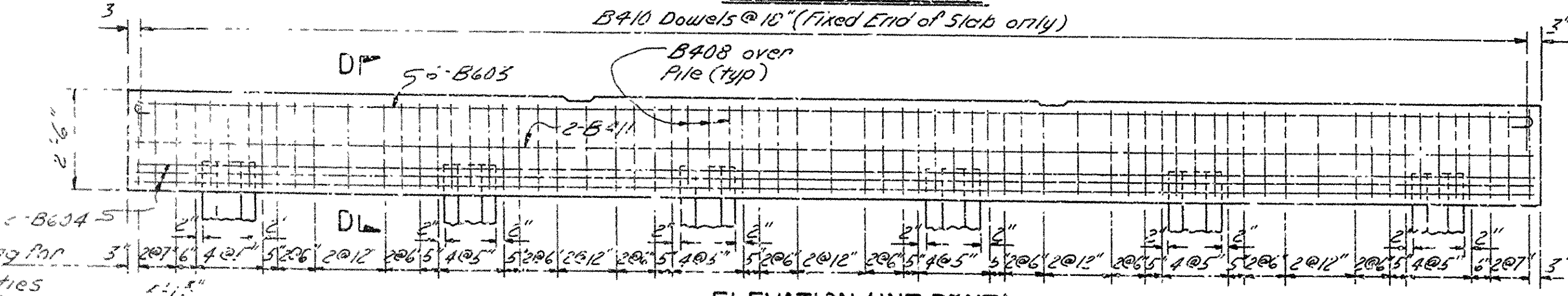
PLAN (END BENT)



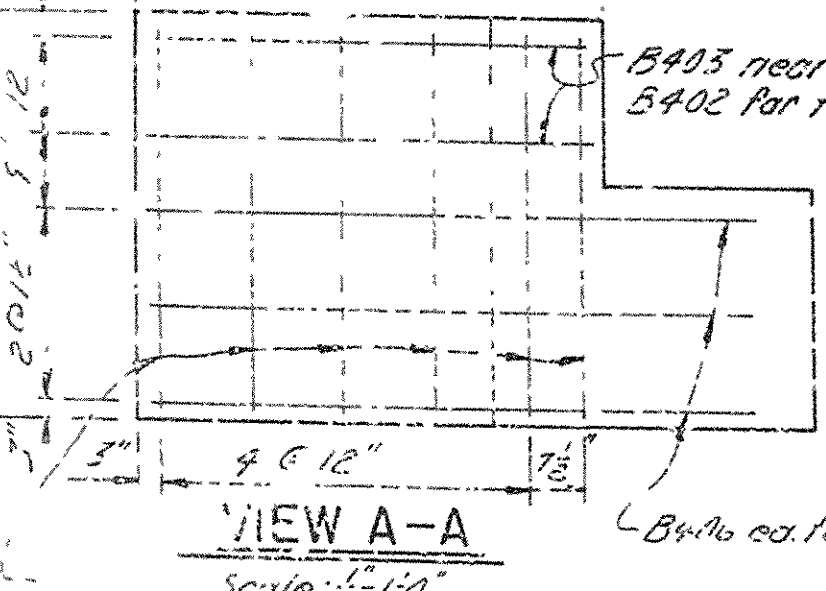
ELEVATION (END BENT)



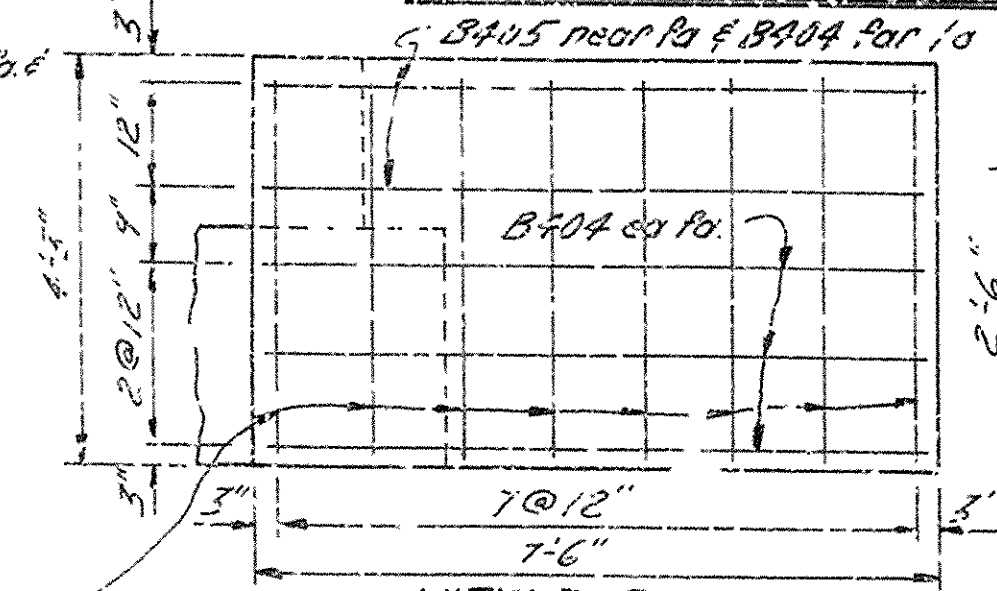
PLAN (INT. BENT)



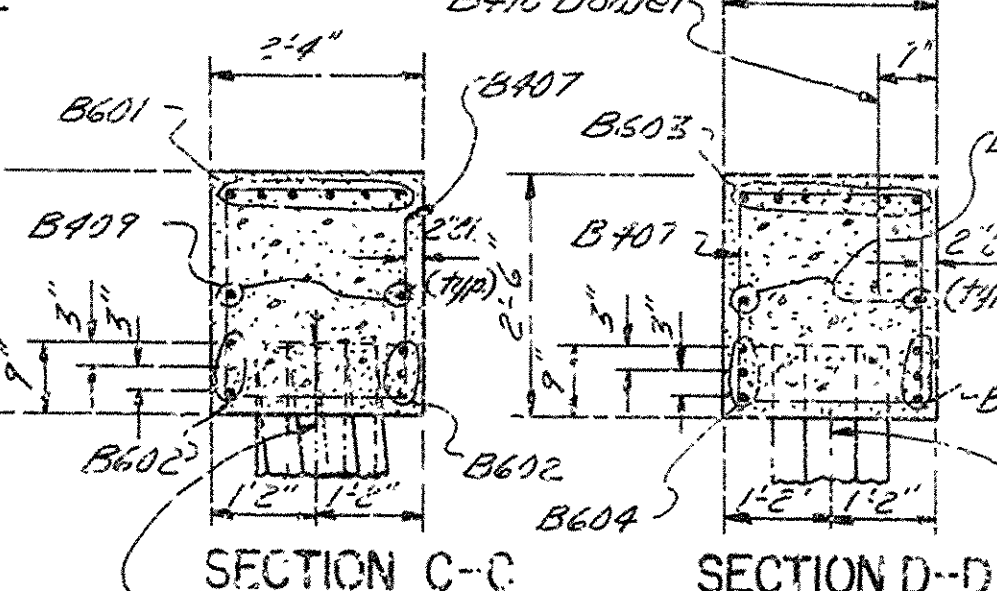
ELEVATION (INT. BENT)



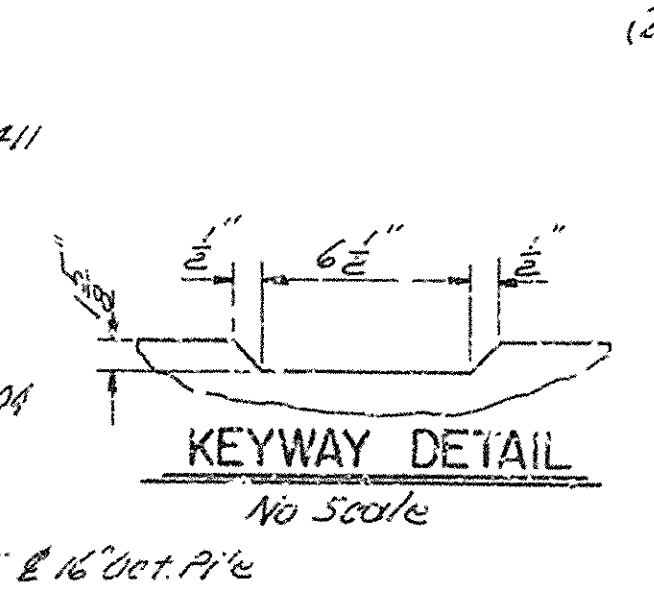
VIEW A-A
Scale: 1/2"=1'-0"



VIEW B-B
Scale: 1/2"=1'-0"

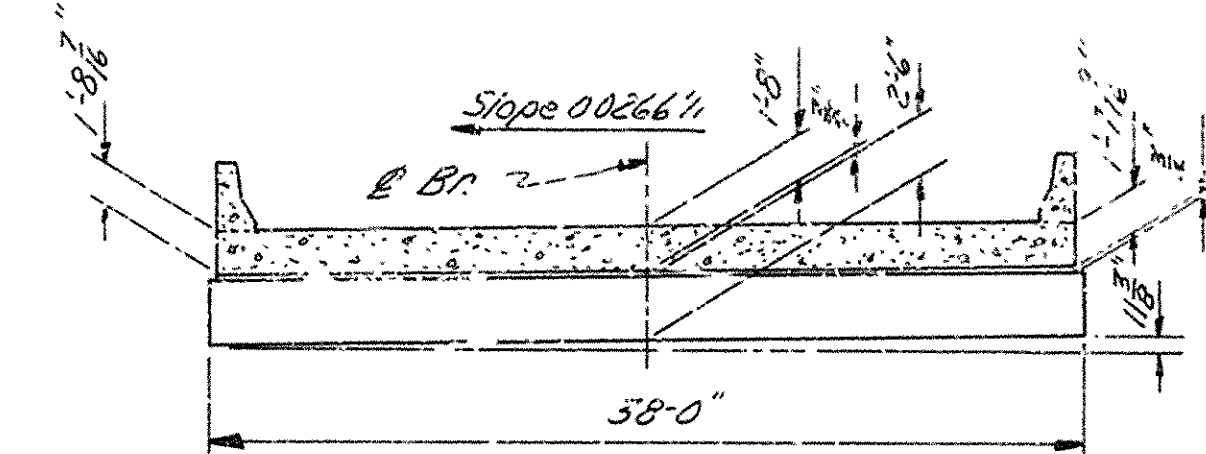


SECTION C-C
Scale: 1/2"=1'-0"

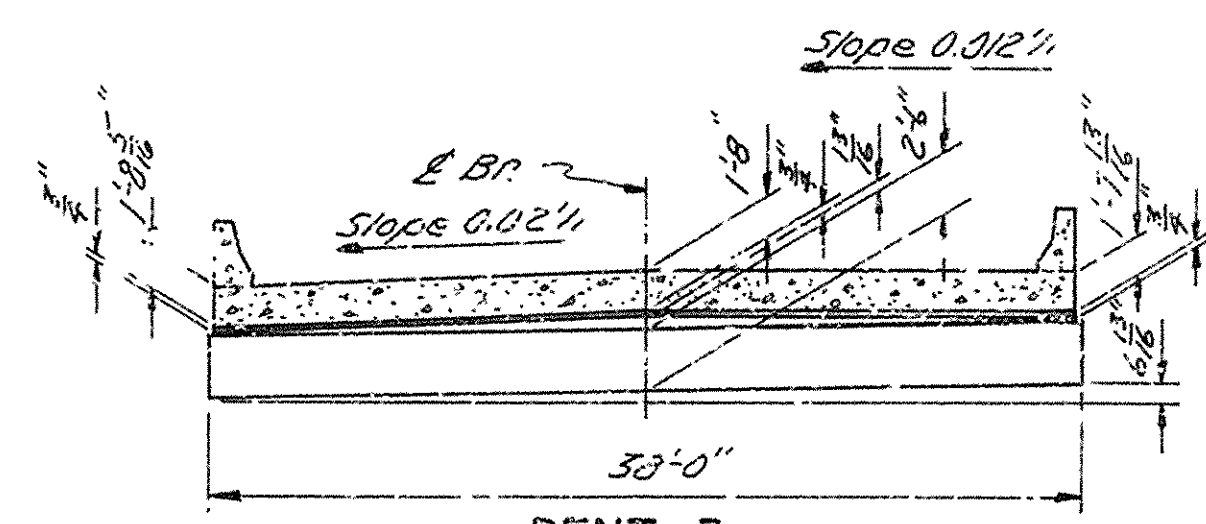


SECTION D-D
Scale: 1/2"=1'-0"

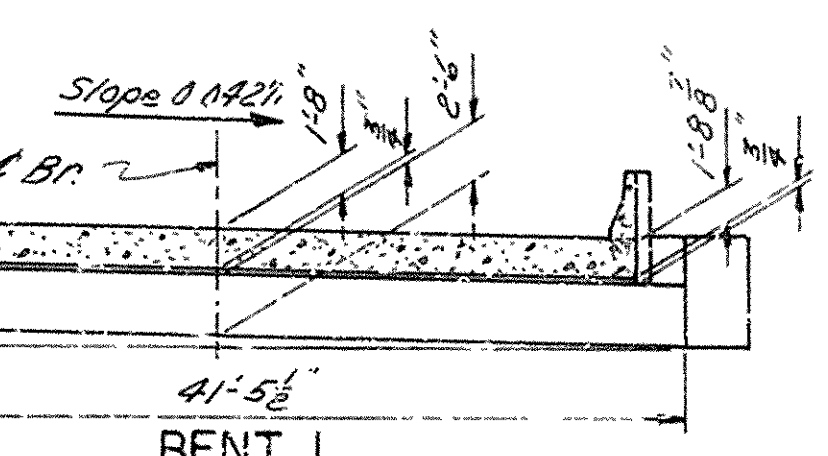
KEYWAY DETAIL
No Scale



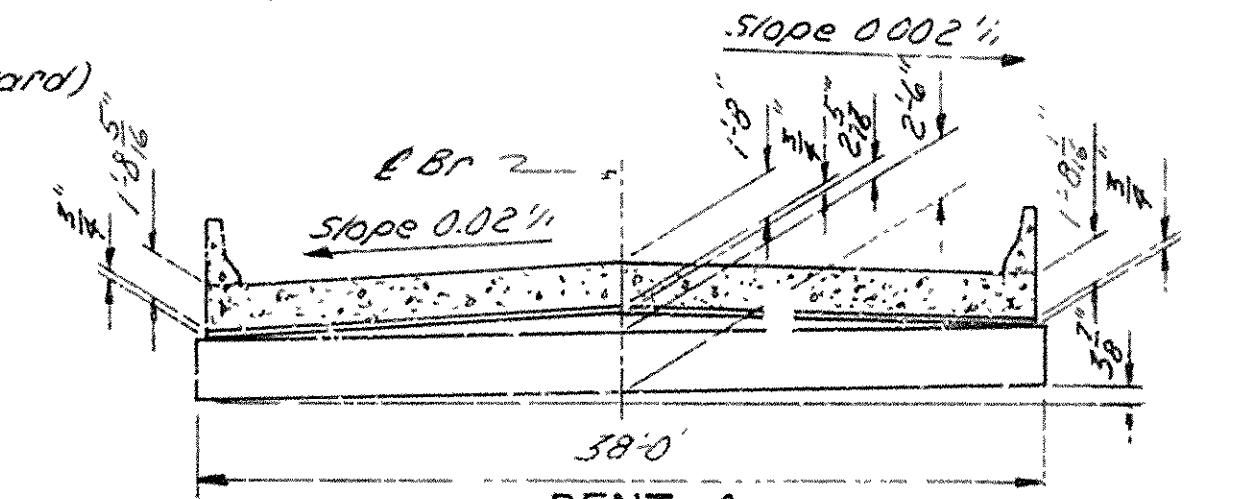
BENT 2
(Looking Forward)



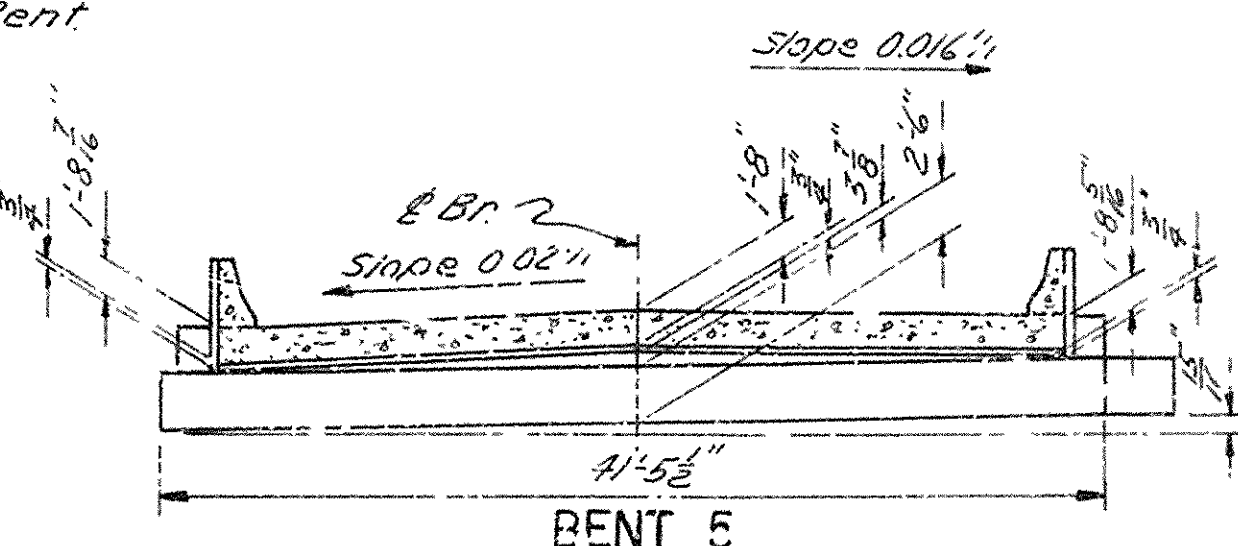
BENT 3
(Looking Forward)



BENT 1
(Looking Backward)



BENT 4
(Looking Forward)



BENT 5
(Looking Forward)

CROSS SLOPE DETAILS

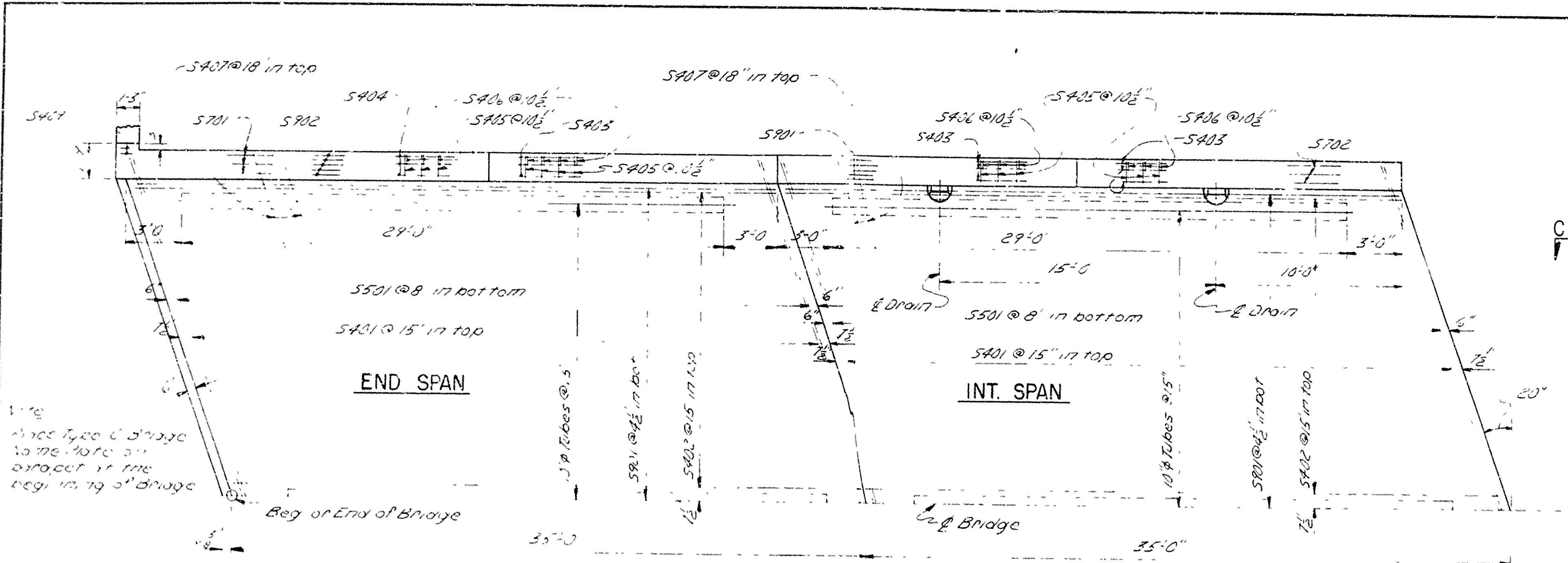
Scale: 1/8"=1'-0"

DETAILS OF BENTS
BAYOU TWO PRAIRIE
LONOKI--I-40 BRIDGE & APPRS.
LONKE COUNTY
ROUTE 31 SEC. 3
ARKANSAS STATE HIGHWAY COMMISSION
LITTLE ROCK, ARK.
DRAWN BY: JPS DATE: 12-17-72
CHECKED BY: DV DATE: 1-3-73
BRIDGE NO. 5508 DRAWING NO. 18063

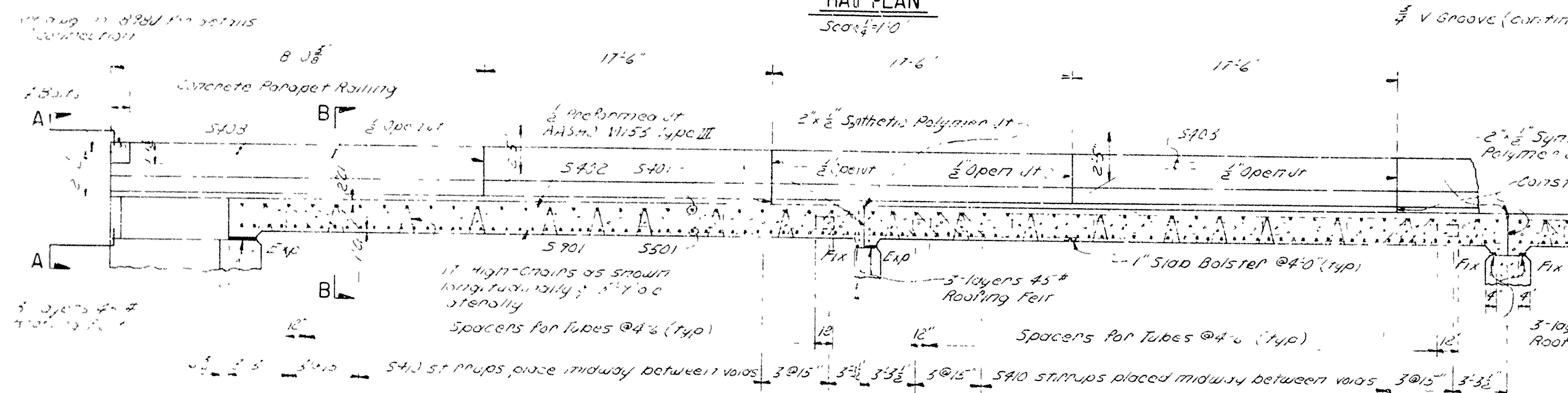
DATE REVISED	DATE FILLED	DATE REVISED	DATE FILLED	FED. ROAD NO.	STATE	FED. AID PROJ. NO.	FISCAL YEAR	SHEET NO.	TOTAL SHEETS
				6	ARK	STATE		16	42
				JOB NO.	5508 SPAN 10.5 18064				

BAR LIST PER SPAN

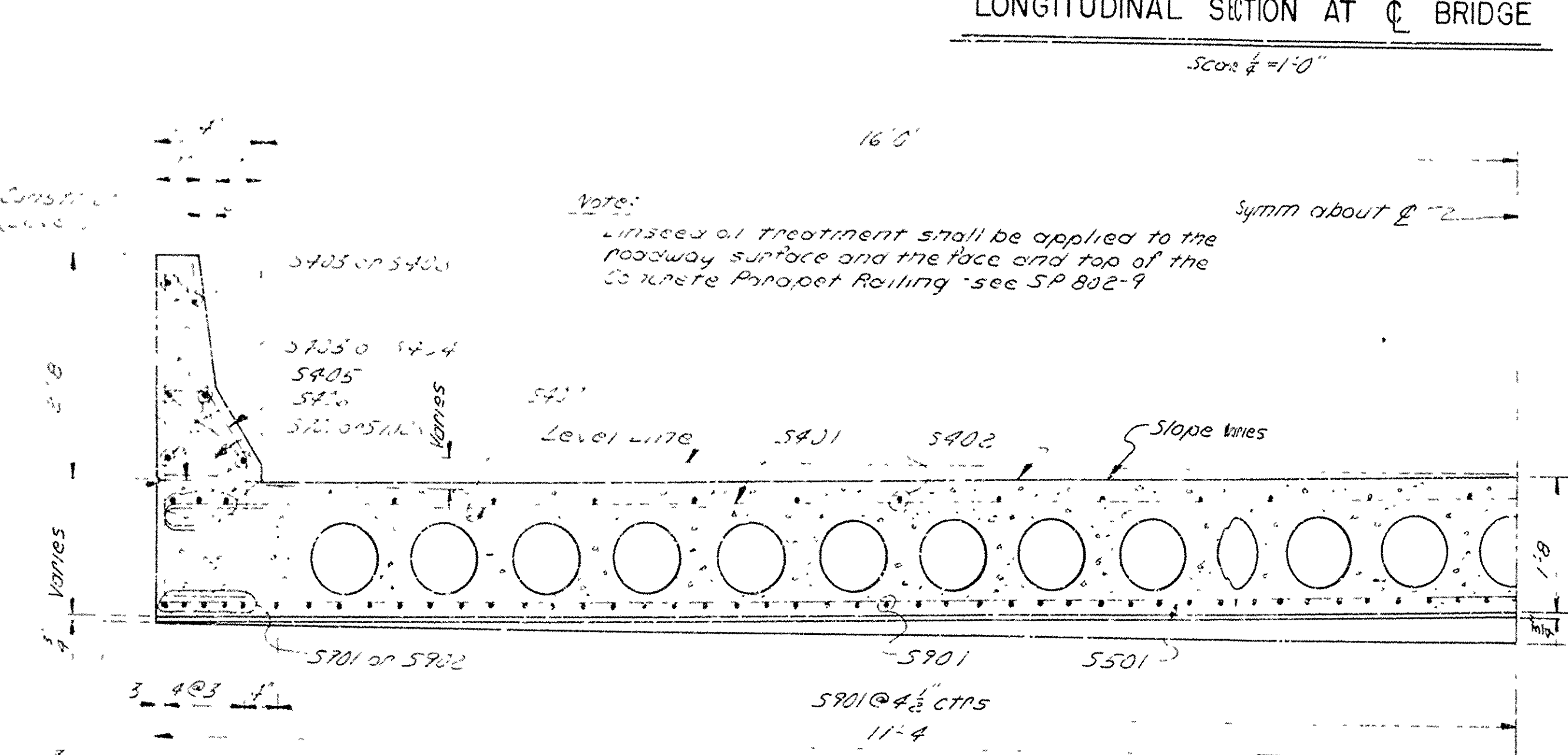
BAR	No.	Length	Qty	Bending Diagrams
S401	28	31'-6"	5	
S402	26	34'-7"	5	
S403	12	24'-11"	5	
S404	8	17'-7"	5	
S405	78	7'-5"	2	
S406	78	6'-5"	2	
S407	46	6'-10"	3	
S408	4	16'-8"	5	
S409	12	0'-11"	5	
S410	192	3'-4"	2	
S501	52	36'-6"	5	
S502	4	8'-1"	3	
S503	6	3'-11"	3	
S504	6	3'-11"	3	
S505	85	34'-7"	5	
S506	10	35'-2"	5	
S507	85	34'-7"	5	
S508	10	35'-2"	5	
S509	85	34'-7"	5	
S510	10	35'-2"	5	



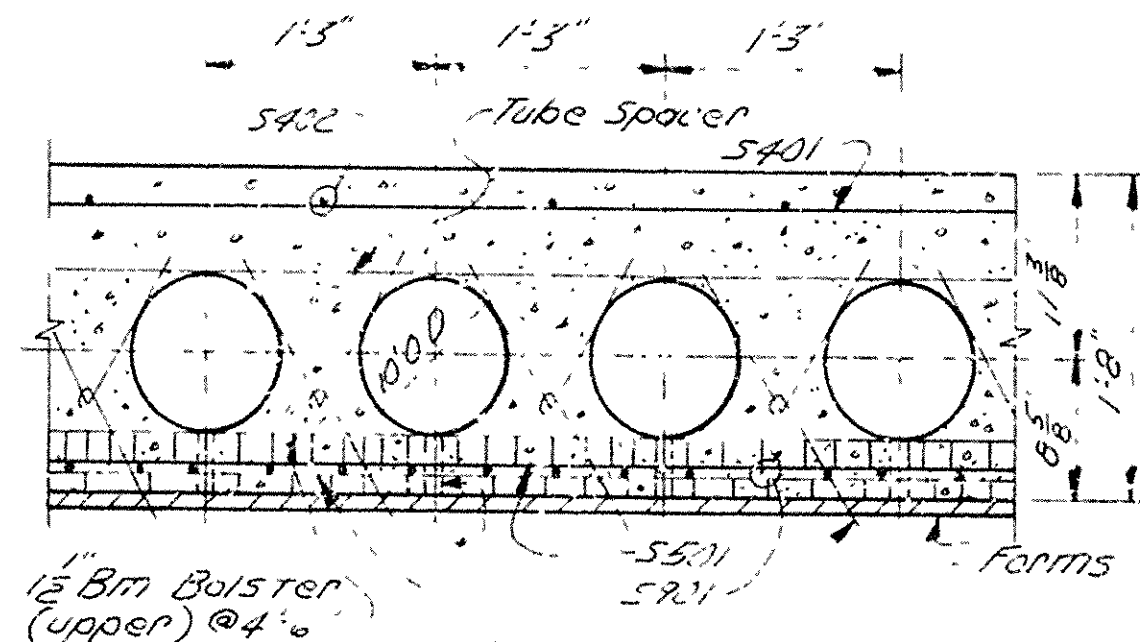
HALF PLAN
Scale: 1/4" = 1'-0"



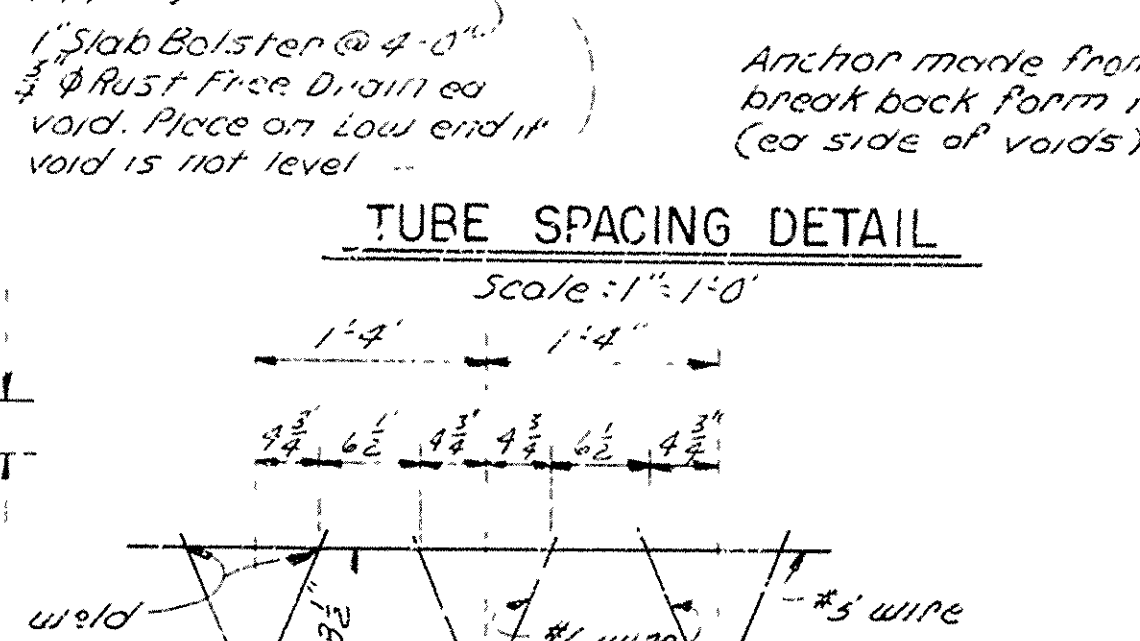
LONGITUDINAL SECTION AT C BRIDGE
Scale: 1/4" = 1'-0"



HALF SECTION THRU ROADWAY
Scale: 1/4" = 1'-0"



TUBE SPACING DETAIL
Scale: 1/4" = 1'-0"



SPACER DETAIL
Scale: 1/4" = 1'-0"

SECTION B-B
Scale: 1/4" = 1'-0"

SECTION C-C
Scale: 1/4" = 1'-0"

DRAIN DETAIL
Scale: 1/4" = 1'-0"

INT. BENT
No Scale

DETAILS OF STANDARD
35'-0" R.C. SLAB SPAN
20° RT. FWD. SKEW 32' CL. RDWY.
CONC. PARAPET RAILING
ROUTE 31 SEC. 3
ARKANSAS STATE HIGHWAY COMMISSION
LITTLE ROCK, ARK.

BRIDGE NO. 5508 DRAWING NO. 18064
DATE 12-22-72
SCALE 1/4" = 1'-0"

Neal Pinkerton
BRIDGE ENGINEER

17

DATE REVISED	DATE FILMED	DATE REVISED	DATE FILMED	FED. ROAD NO.	STATE	FED. AID PROJ.	FISCAL YEAR	SHEET NO.	TOTAL SHEETS
7-21-73	7-31-73			6	ARK.	STATE			
				JOB NO.		6952		6	42

S 5507-5508 QUANT. SHT. 18058

SCHEDULE OF BRIDGE QUANTITIES

BRIDGE NO.	CODE NO.	NAME PLATE TITLE	ITEM NO.	PCI	SP1802	SP1802	803	804	SP & 805	812	713	
			ITEM	COMMON EXCAVATION FOR STRUCTURES-BRIDGE	CLASS "S" CONCRETE	CLASS "S(AE)" CONCRETE	BOILED LINED OIL	REINFORCING STEEL	PRECAST CONCRETE PILING (16" OCT)	BRIDGE NAME PLATES (TV-E "C")	REMOVAL OF EXISTING BRIDGE STRUCTURES	
			UNIT OF STRUCTURE	UNIT	CU. YD.	CU. YD.	CU. YD.	GAL.	LB.	LIN. FT.	EACH	LUMP SUM
5507	X020	BAYOU TWO PRAIRIE RELIEF	END BENTS 144		28	19.44			2490	280		
			INTERMEDIATE BENTS 243			14.71			2200	235		
			THREE 25'-0" R.C. SLAB SPANS				142.30	6.5	26790			
			TOTALS FOR BRIDGE NO. 5507	28	34.15	142.30	6.5	31480	565	1	0.27	
5508	X020	BAYOU TWO PRAIRIE	END BENTS 145		32	21.47			2620	220		
			INTERMEDIATE BENTS 2344			23.88			3564	599		
			FOUR 35'-0" R.C. SLAB SPANS				266.60	12.1	66106			
			TOTALS FOR BRIDGE NO. 5508	32	45.35	266.60	12.1	72290	819	1	0.45	
			TOTALS FOR JOB NO. 6952	60	79.50	408.90	18.6	103770	1384	2	0.72 *	

* Remaining 0.28 is Roadway Item

SCHEDULE OF BRIDGE QUANTITIES
LONOKE ~ I-40 BRIDGES & APPRS.
LONOKE COUNTY
ROUTE 31 SE. 3
ARKANSAS STATE HIGHWAY COMMISSION
LITTLE ROCK, ARK.
DRAWN BY: K.M.G. DATE: 12 January 73
TRACED BY: DATE: SCALE: None
CHECKED BY: DATE:
BRIDGE ENGINEER
BRIDGE NO. 5507 & 5508 DRAWING NO. 18058