

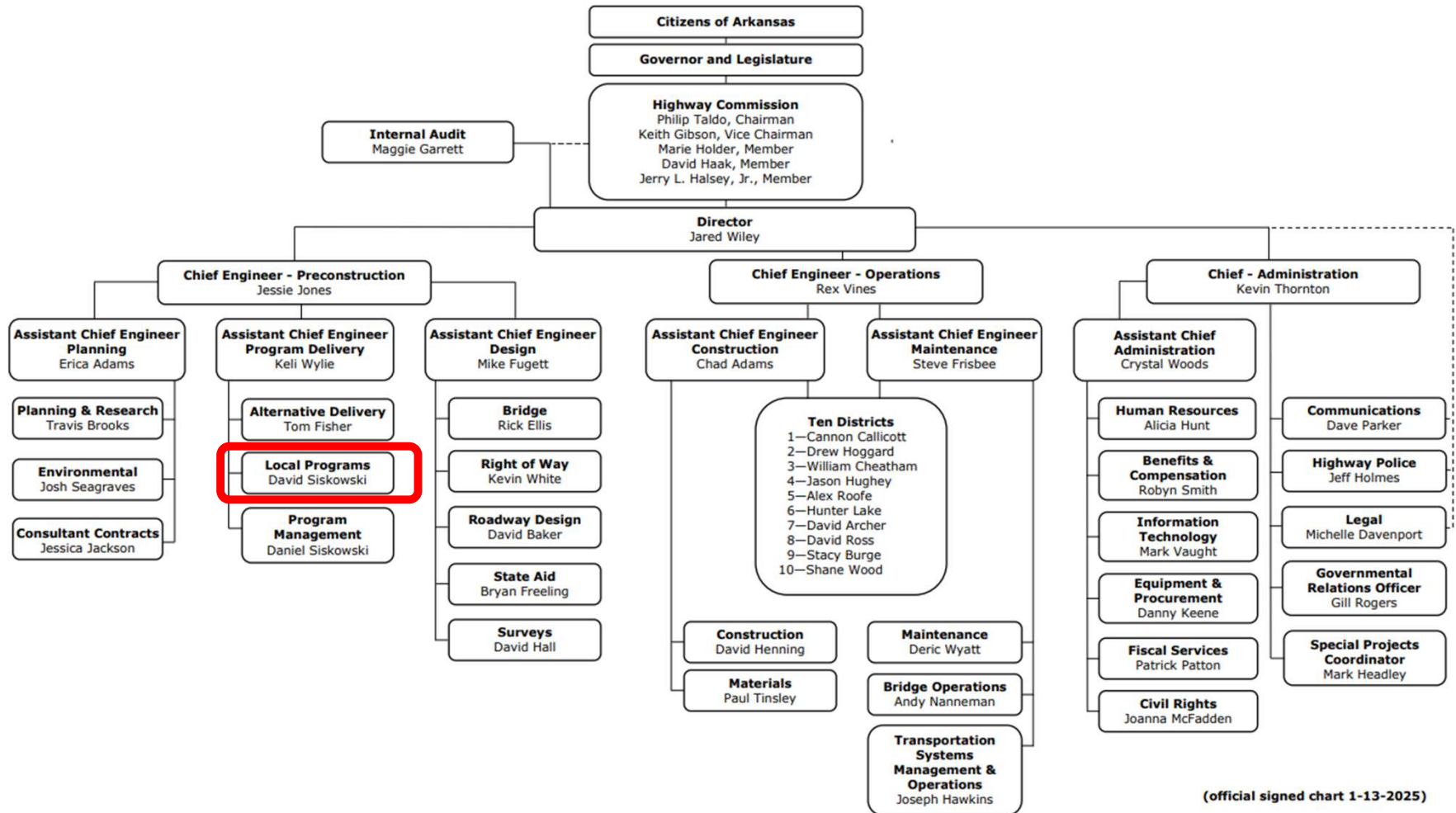


# Federal Programs that Power Public Projects

LOCAL PROGRAMS DIVISION

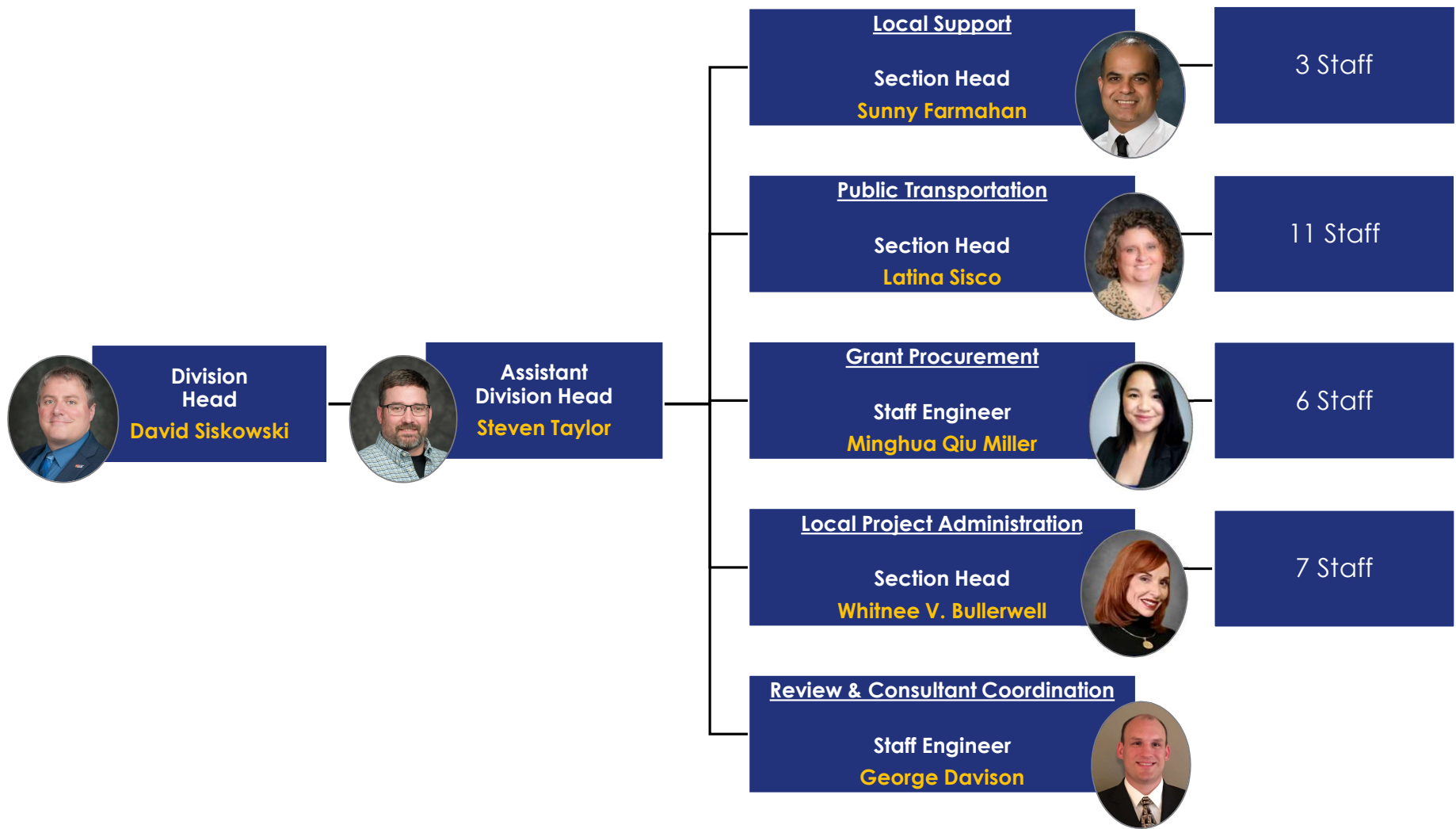


## ARKANSAS DEPARTMENT OF TRANSPORTATION ORGANIZATION CHART



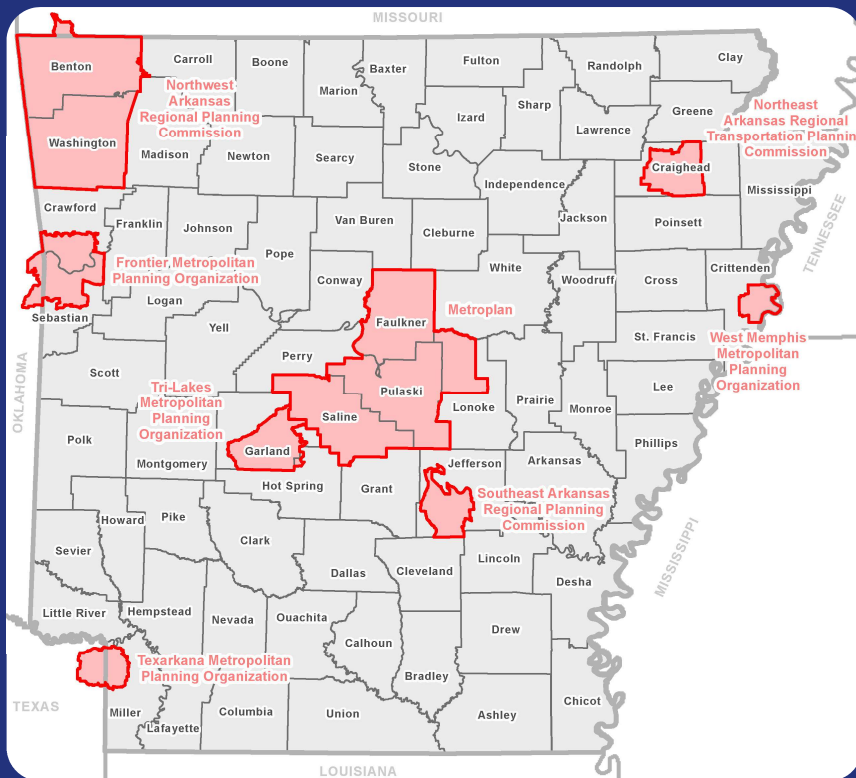
(official signed chart 1-13-2025)

# LOCAL PROGRAMS DIVISION



# LOCAL SUPPORT

## Metropolitan Planning Organization (MPO) Coordination



- 8 MPO's in Arkansas
- Transportation Improvement Plan Coordination
- Metropolitan Transportation Planning

# LOCAL SUPPORT

## Bicycle and Pedestrian Coordination



- Project Development/Corridor Planning
- Policy Development
- USBR 80 – Tennessee to North Little Rock
- USBR 51 – Missouri to Alma
- USBR 251 – Missouri to Bella Vista



# LOCAL SUPPORT

Local Technology Assistance Program



- Technical assistance for cities & counties
- Assists in implementing transportation-related technology
- Previously Technology Transfer or T<sup>2</sup>

[www.ardot.gov/LTAP](http://www.ardot.gov/LTAP)

# LOCAL SUPPORT

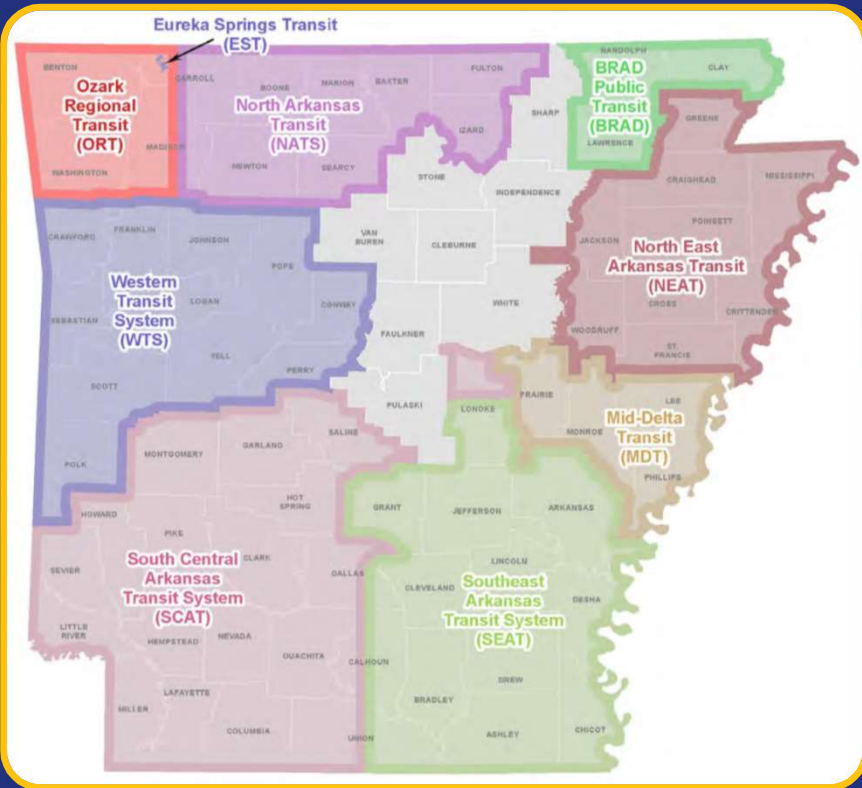
## Partnering Program



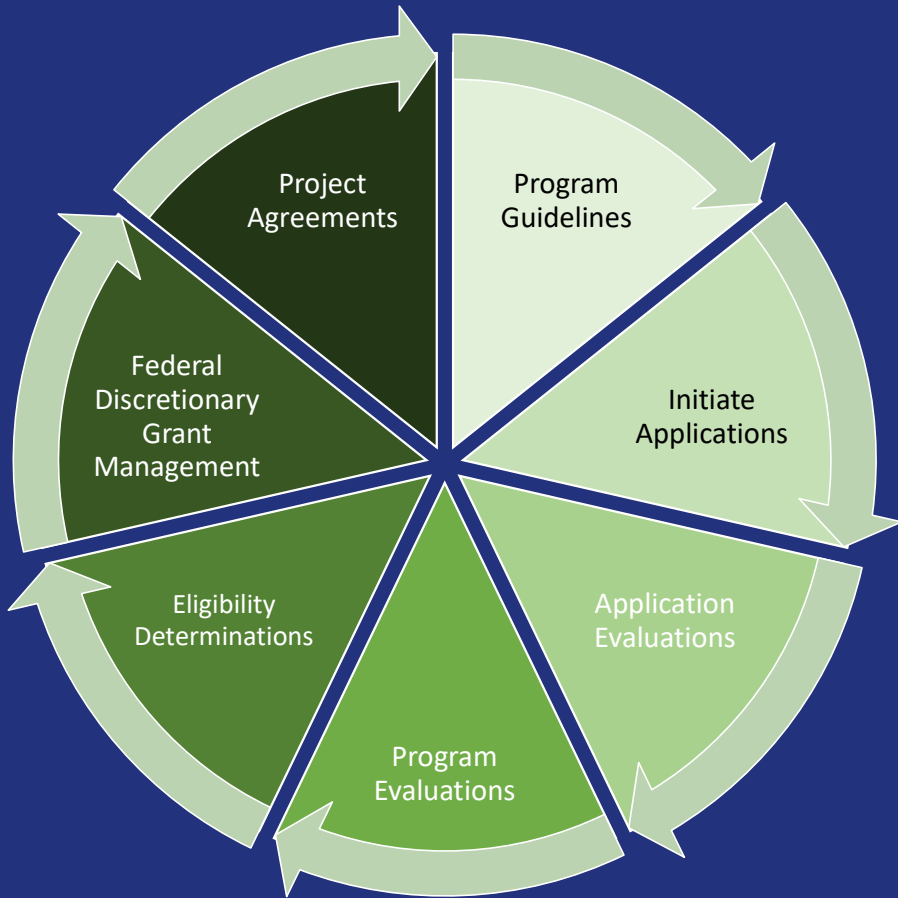
Mayflower

- Allows ARDOT expedite project development on local priority projects
- Partnering commitments come in all forms
  - Cash Contribution/Grant Funding
  - Route Drops
  - Handling phases of project development
  - Right of way Donation

# PUBLIC TRANSPORTATION

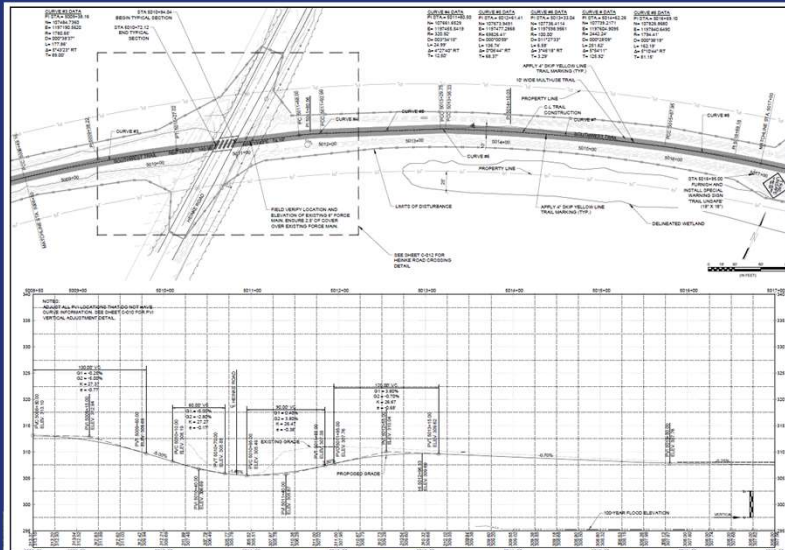


# GRANT PROCUREMENT



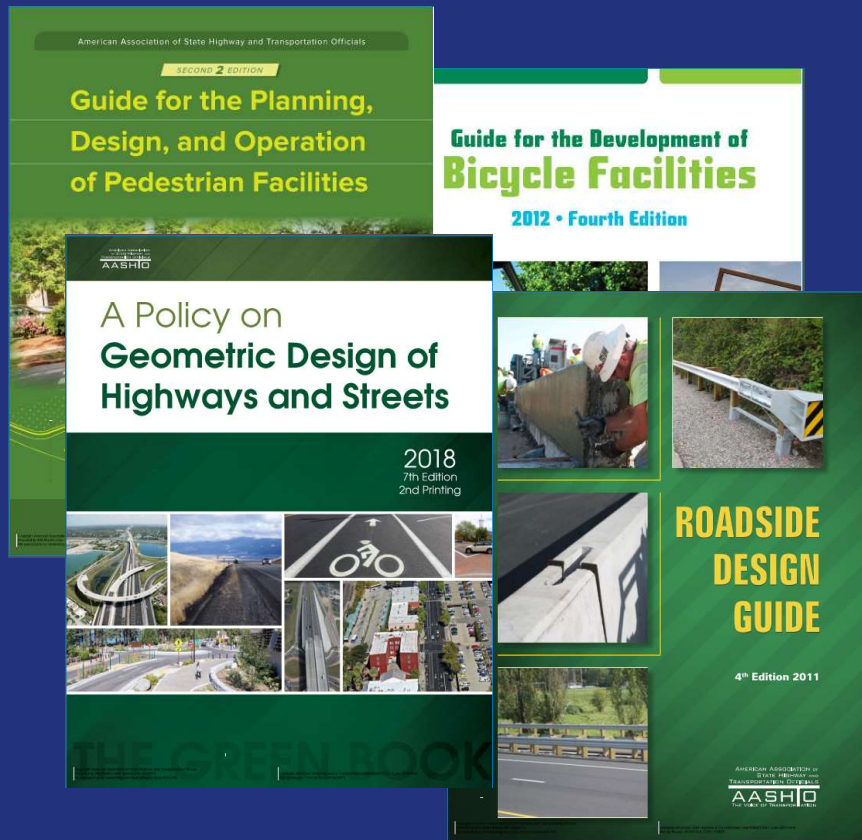
- Program Development
- Managing Application Cycles
- Project Request Evaluations
- Discretionary Grant Management

# LOCAL PROJECT ADMINISTRATION



- Guidance on Federal Requirements
- Plan/Environmental Reviews
- Obligation of Federal Funding
- Construction Oversight
- Project Closeout

# PLAN REVIEW & CONSULTANT COORDINATION



- AASHTO Standards
- ADA Compliance
- ARDOT Bicycle & Pedestrian Accommodation Plan

# PLAN REVIEW & CONSULTANT COORDINATION

## SELECTED CONSULTANTS ON-CALL SERVICES - LOCAL FEDERAL AID PROJECTS (2025-2028)

Alliance Transportation Group, LLC  
Bacon Farmer Workman Engineering & Testing, Inc.  
BGE Consultants, Inc.  
Bridgefarmer & Associates, Inc.  
Burns & McDonnell Engineering Company, Inc.  
CEI Engineering Associates, INC.  
Crafton, Tull & Associates, Inc.  
Garver, LLC  
Great River Associates, Inc. (Great River Engineering)  
GTS, Inc.  
Halff Associates, Inc.  
Harbor Environmental, Inc. (Harbor, a Terracon Company)  
Hardesty & Hanover, LLC  
HDR Engineering, Inc.  
HNTB Corporation  
Horner & Shifrin, Inc.  
ICONIC Consulting Group, Inc.  
Jacobs Engineering Group Inc.  
Kimley-Horn and Associates, Inc.  
McClelland Consulting Engineers, Inc.  
Michael Baker International, Inc.  
Modjeski and Masters, Inc.  
Neel-Schaffer Inc.  
NTB Associates, Inc.  
O. R. Colan Associates, LLC  
Olsson, Inc. (a Nebraska Corporation)  
OWN, Inc.  
Pickering Firm, Inc.  
Pinnacle Consulting Management Group, Inc.  
Professional Service Industries, Inc.  
Rummel, Klepper & Kahl, LLP D/B/A RK&K, LLP  
Smith Seckman Reid, Inc.  
Terracon Consultants, Inc.  
Toole Design Group, LLC  
Traffic Engineering Consultants, Inc.  
Traffic Engineering Solutions, PLLC  
UES Professional Solutions 25, LLC  
Universal Field Services, Inc.  
Volkert, Inc.  
WSB, LLC

- 40 Consultants
- All Phases: Planning through Construction Inspection
- Most Project Types



## Public Transportation Section

\*Photo courtesy of Rock Region Metro



We Give Away Buses & Make People Happy !

# PUBLIC TRANSPORTATION SECTION

## 3 Teams

- Grant Management
- Program Management
- Safety & Asset Management

# FEDERAL TRANSIT ADMINISTRATION PROGRAMS

**STIP**  
STATEWIDE  
TRANSPORTATION  
IMPROVEMENT  
PROGRAM

FEDERAL FISCAL YEARS  
2025-2028

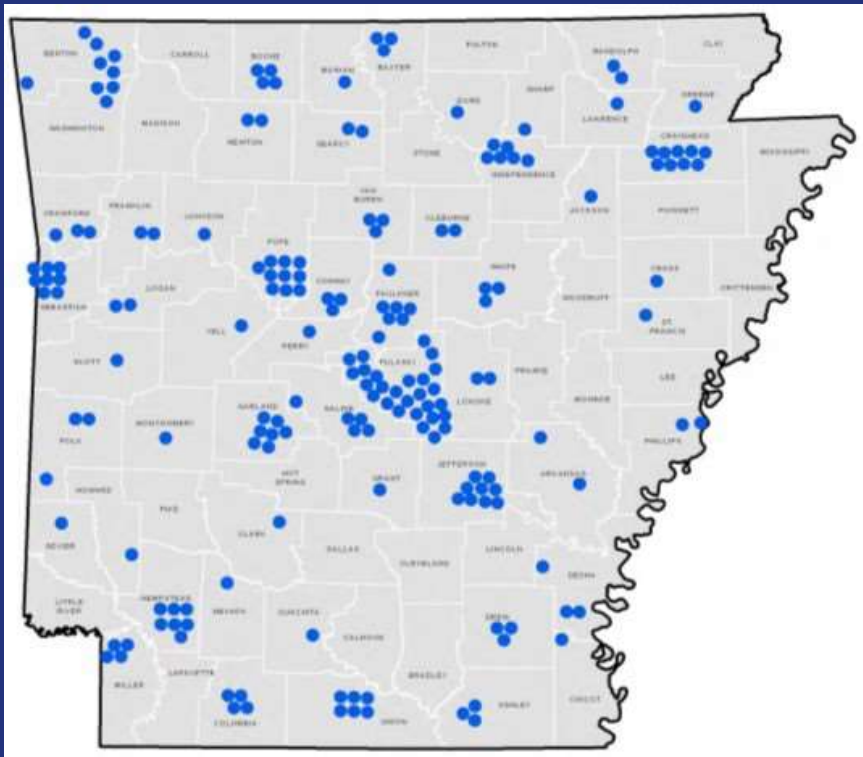
**ARDOT**  
ARKANSAS DEPARTMENT  
OF TRANSPORTATION

Presented by:  
Arkansas State Highway Commission  
In compliance with Title 23 U.S.C. § 135  
October 2, 2024

## Section 5305 – Consolidated Planning Program

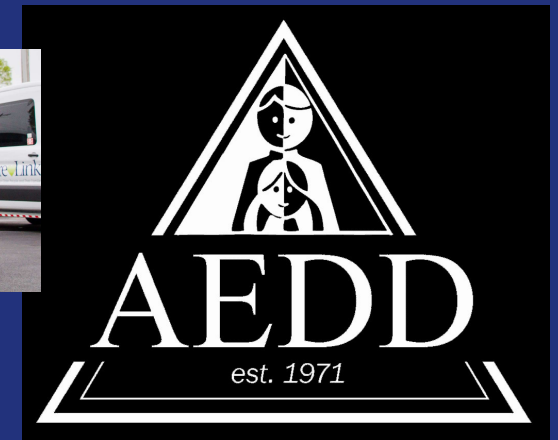
Annual Apportionment: \$3.2M

# FEDERAL TRANSIT ADMINISTRATION PROGRAMS



## Section 5310 – Enhanced Mobility for Seniors and Individuals with Disabilities Program

Annual Apportionment: \$4M





# FEDERAL TRANSIT ADMINISTRATION PROGRAMS

---



## Section 5311 – Rural Areas Program continued

- Arkansas Transit Association

## Section 5311(f) – Intercity Providers

- Greyhound
- Jefferson Lines



# FEDERAL TRANSIT ADMINISTRATION PROGRAMS



## Section 5339 – Bus and Bus Facilities Program

Annual Apportionment: \$6.6M



\* Photo courtesy of Eureka Springs Transit

# FEDERAL TRANSIT ADMINISTRATION PROGRAMS

## Section 5339 – Bus and Bus Facilities Program continued



\* Photo courtesy of Eureka Springs Transit

# FEDERAL TRANSIT ADMINISTRATION PROGRAMS

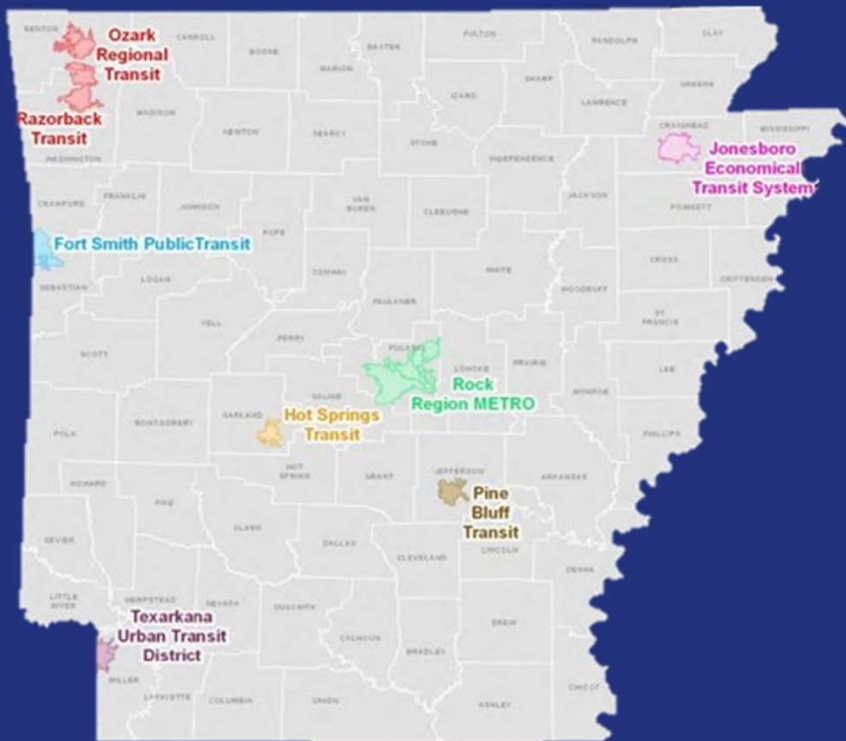


\*Photo courtesy of Rock Region Metro

## Section 5329 – State Safety Oversight Program

Annual Apportionment: \$493K

# FEDERAL TRANSIT ADMINISTRATION PROGRAMS



## Section 5307 – Urbanized Area Program

Annual Apportionment: \$7M



Rock Region  
METRO



# FEDERAL TRANSIT ADMINISTRATION PROGRAMS



Trolley bus rides to and from Downtown Jonesboro

# STATE PROGRAMS

## **Public Transit Trust Fund**

- These funds help provide local match for all agencies.

Annual Apportionment: \$7M

## **Corporate Franchise Tax**

- Supplemental funding for rural and urban transit agencies

Annual Apportionment: \$346K

# VEHICLE FUNDING PROGRAM

## **TransLease Program**

- This state program provides state funding for public and non-profit agencies to lease vehicles at 100% up to four years with no interest.
- Applications are accepted continually throughout the year
- Vehicle availability is contingent upon DFA state contract and dealer availability

Funding: \$6M

# POSITIVE IMPACTS OF PUBLIC TRANSIT

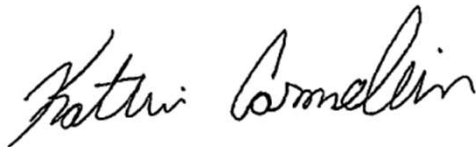
## To Whom It May Concern:

Public transportation means something different to everyone but for my family, SCAT was truly a blessing. When my dad began riding the bus to his dialysis appointments, life was hectic for my mom and me. We were both working part-time and going to school full-time and between chemo treatments, doctor visits and daily responsibilities, we could barely keep up—especially after I had my first child.

That's when SCAT stepped in and made a difference we'll never forget. My dad looked forward to those rides. He enjoyed talking with the drivers, catching up on stories and sometimes even asking to take the scenic route home. On the tough days after dialysis, he'd still tell me how much he enjoyed his ride.

Those rides gave him independence and gave my mom and me peace of mind. We'll always be grateful for the kindness, patience and care the drivers showed him. SCAT wasn't just transportation for us—it was support, friendship and comfort during one of the hardest times in our lives.

With heartfelt thanks,



*Those rides gave him independence and gave my mom and me peace of mind. We'll always be grateful for the kindness, patience and care the drivers showed him. SCAT wasn't just transportation for us – it was support, friendship and comfort during one of the hardest times in our lives.*

*- Katlin Cornelius*

# POSITIVE IMPACTS OF PUBLIC TRANSIT



*As someone who has the privilege of helping lead this program, I'm humbled. Public transportation is more than routes and schedules. It's about connection, independence and opportunity. And when I see those values reflected in my own family's experience, it reminds me why this work matters so deeply. It reminds me exactly why I do what I do. This is my WHY!*

*- Dana Bates*

# LOCAL FUNDING OPPORTUNITIES



Federal Lands Access Program (FLAP)



National Electric Vehicle Infrastructure Program (NEVI)



Transportation Alternatives Program (TAP)



Recreational Trails Program (RTP)



Intersection Improvement Program (IIP)



Local Bridge Program (LBP)



# FEDERAL LAND ACCESS PROGRAM (FLAP)



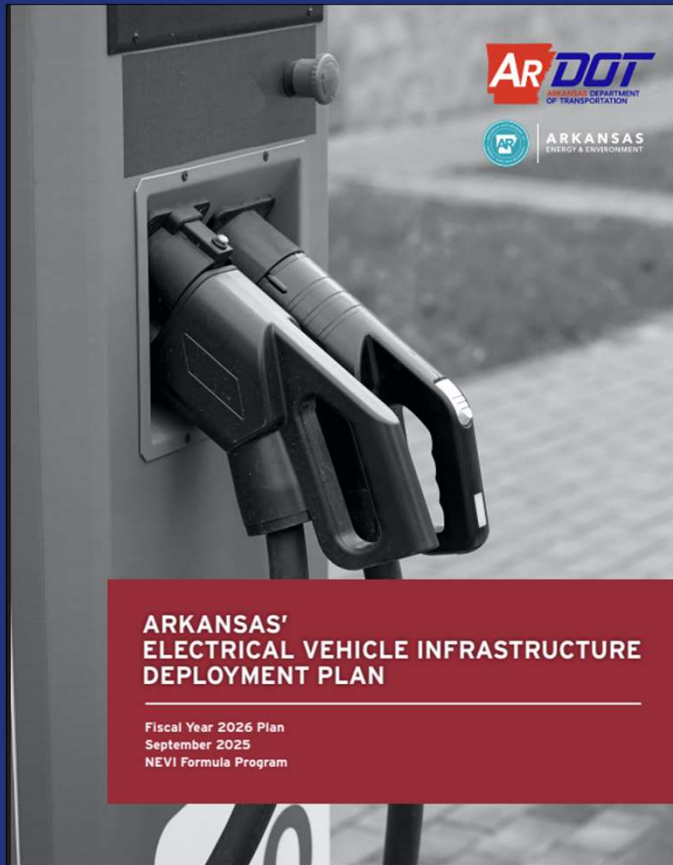
Southwest Trail



- Through Eastern Federal Lands Highway Division
- Provides Federal-Aid funding to local public agencies and state agencies
- Constructs projects that provide access to Federal Lands



# NATIONAL ELECTRIC VEHICLE INFRASTRUCTURE (NEVI) PROGRAM



- Reimbursable grant program
- Plan to build a national network of 500,000 electric vehicle charging stations by 2030
- Priority given to federally designated alternative fuel corridors



# TRANSPORTATION ALTERNATIVES PROGRAM & RECREATIONAL TRAILS PROGRAM



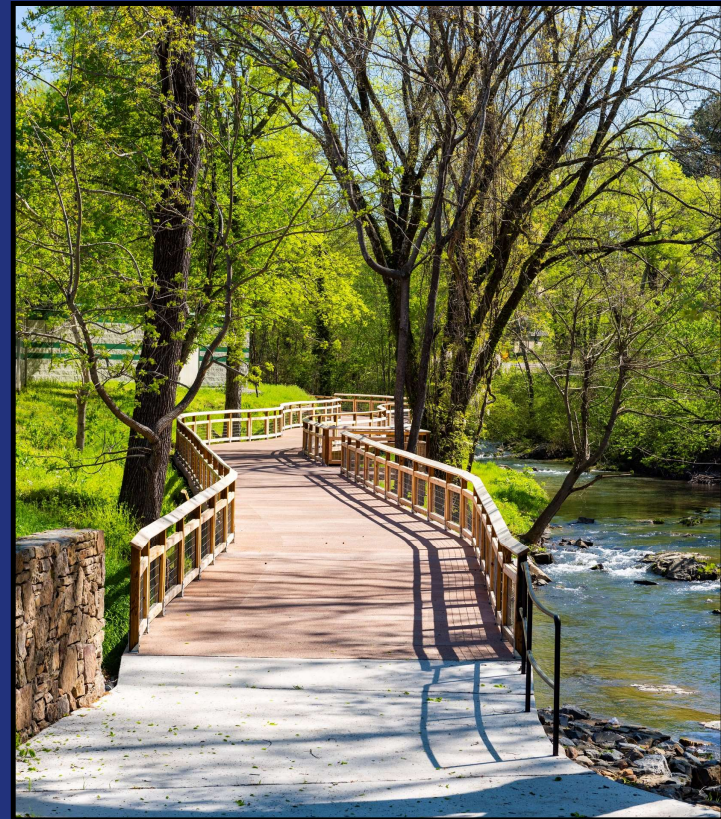
- Competitive Application Process
- Reimbursable grant program
- Non-motorized forms of transportation



# TRANSPORTATION ALTERNATIVES PROGRAM & RECREATIONAL TRAILS PROGRAM



- All Phases Eligible
- \$500,000 maximum Federal-aid funding request for all TAP & RTP projects
- \$20,000 minimum Federal-aid funding request for infrastructure projects



Hot Springs Creek Greenway

# Old River Bridge

- Saline County
- 3 phases
- FLAP, Transportation Alternatives Program, Economic Development Administration, & Attributable funding
- Federal Funding: \$2,237,393.91
  - 3 application cycles
- Substantially Complete



Benton

# Boyle Park Bike Trails



- City of Little Rock
- Recreational Trails Program
- Federal Funding: \$200,000
- Construction Cost: \$287,375
- Substantially Complete

# Bobcat Trail

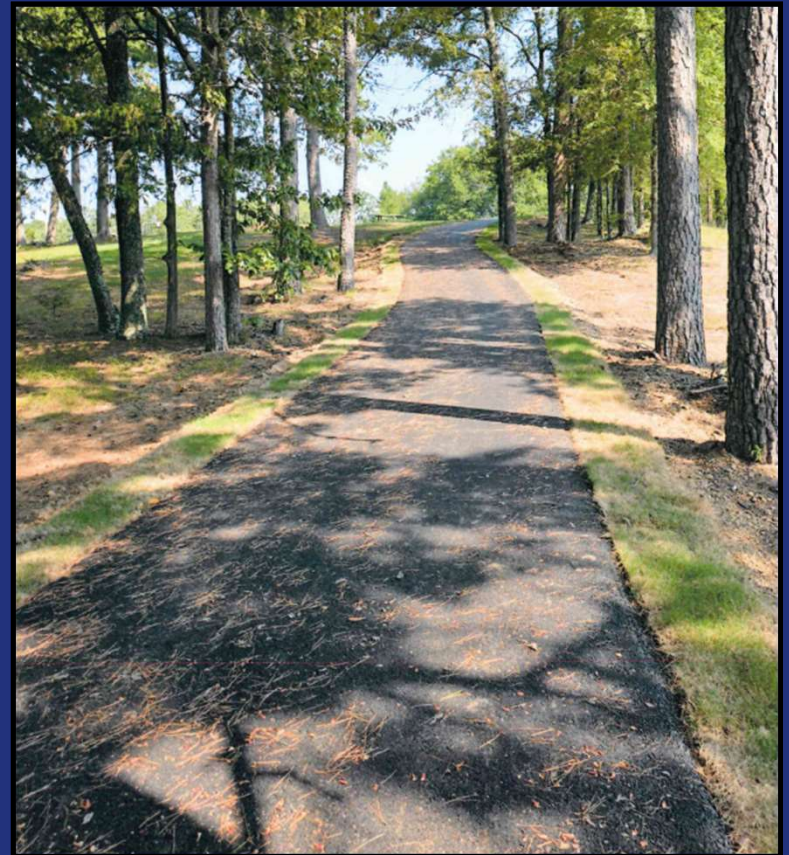
- Buffalo River Community Development Corp.
- Recreational Trails Program
- Federal Funding: \$100,000
- Construction Cost: \$109,862.50
- Substantially Complete



Marshall

# Forest Jones Park Trail Improvements

- City of Mount Ida
- Recreational Trails Program
- Federal Funding: \$48,000
- Construction Cost: \$83,800
- Substantially Complete



Mount Ida



## INTERSECTION IMPROVEMENT PROGRAM

- Promotes Connectivity & Access to Local Development
- Program Initiated in 2005
- 50+ Intersections Improved
- 80% Federal (\$1,000,000 Maximum)
- 10% State (\$125,000 Maximum)



Harrison

# Highway 64 and Hogan Lane



Conway

- Requested in 2019
- Concern: Traffic volumes and crashes

# INTERSECTION IMPROVEMENT PROGRAM

- Job 080634, Hwy. 64/Hogan Ln. Roundabout (Conway) (S)
- Total Project Cost: \$4,686,000
- Contractor: Mobley Contractors, Inc.
- Estimated Completion: Late 2025



Conway



## LOCAL BRIDGE PROGRAM



Provides Federal-aid funding to improve or replace bridges on public roadways that are off the Federal-aid Highway System.

Heber Springs

# LOCAL BRIDGE PROGRAM



City of Pea Ridge



Fulton County

# LOCAL BRIDGE PROGRAM



Poinsett County

# LOCAL BRIDGE PROGRAM



Izard County

# LOCAL BRIDGE PROGRAM



City of Ola



# LOCAL BRIDGE PROGRAM

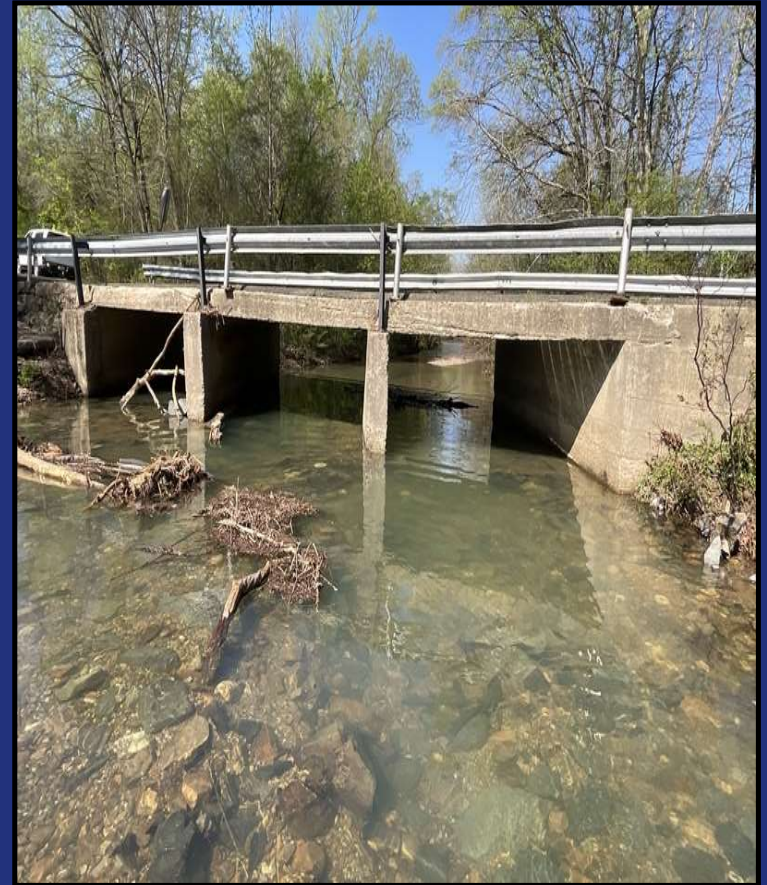
## Feasibility Study Explanation

- Eligibility is determined
- 90% federal maximum
- Sponsor provides \$5,000 toward feasibility study
- Prior to work, a meeting is held to discuss concerns and goals
- The consultant provides feasibility study
- Sponsor and ARDOT meet about feasibility study results
- Sponsor selects option and provides 10% of preconstruction costs

## LOCAL BRIDGE PROGRAM

“The local bridge program has enabled me as Judge to focus on a single lane, functionally obsolete bridge in a high traffic area with many residents depending on that bridge. I am responsible for over 120 bridges in my county. This bridge would have never made it to the top of my priority list because I have to focus on the more immediate, structurally deficient bridges. Now my residents driving over this bridge will experience improved safety and that makes me feel good.”

-- Judge Darryl Mahoney, Garland County

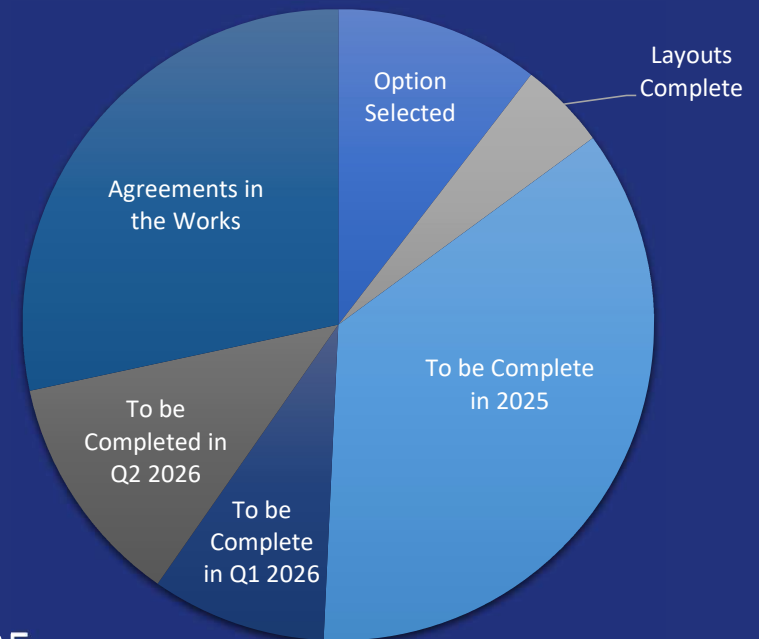


Walnut Valley Road

# LOCAL BRIDGE PROGRAM

## Status of Local Bridge Program

- 164 Bridges Evaluated
- 67 Projects
  - 7 Feasibility Studies Complete & Option Selected
  - 3 Feasibility Study Layouts Complete
- 24 Feasibility Studies to be completed by end of 2025
  - 6 Feasibility Studies to be completed the first quarter of 2026
  - 8 Feasibility Studies to be completed the second quarter of 2026
- 19 Agreements in development



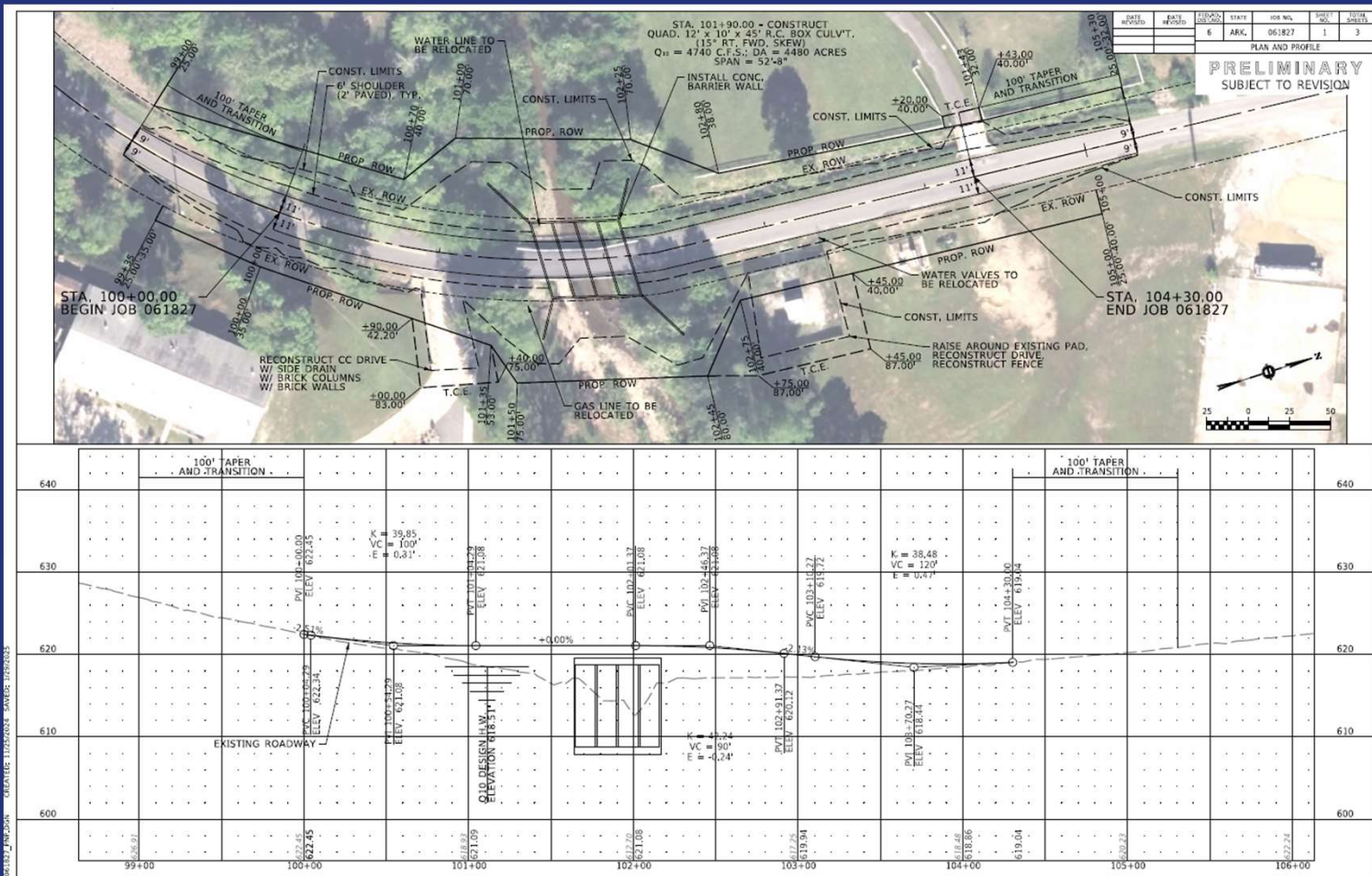
# LOCAL BRIDGE PROGRAM

- Job 061827, S. Fork Saline River Str. & Apprs. (Garland Co.) (S)
- ARDOT's Survey Division has begun work on this project and a Design task order has been sent for review
- Sponsor: Garland County
- Total Project Cost Estimate: \$2,380,000
- Replace the South Fork Saline River Bridge (Structure No. 20061) and approaches with 4 - 11'x11'x30' reinforced concrete boxes



Walnut Valley Road

# LOCAL BRIDGE PROGRAM



# LOCAL BRIDGE PROGRAM

- Job 050496, Sulphur Creek Str. & Apprs. (Heber Springs) (S)
- Design task order has been sent for review
- Sponsor: City of Heber Springs
- Total Project Cost Estimate: \$562,000
- Rehabilitate the deck of the Sulphur Creek Bridge (Structure No. 21444) and improve approaches



South 8<sup>th</sup> Street

# LOCAL BRIDGE PROGRAM

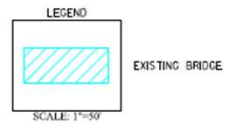


JOB 050496

SULPHUR CREEK STR. & APPRS. (HEBER SPRINGS) (S)  
CLEBURNE COUNTY



DECK REPLACEMENT



# LOCAL BRIDGE PROGRAM

- Job 050503, Spring River Str. & Apprs. (Fulton Co.) (S)
- Post feasibility study meeting complete, option chosen
- Sponsor: Fulton County
- 224 feet in length, 10.2 feet in width
- Total Project Cost Estimate: \$4,079,600
- Replace the Spring River Bridge (Structure No. 13139) and approaches with a six-span concrete slab bridge

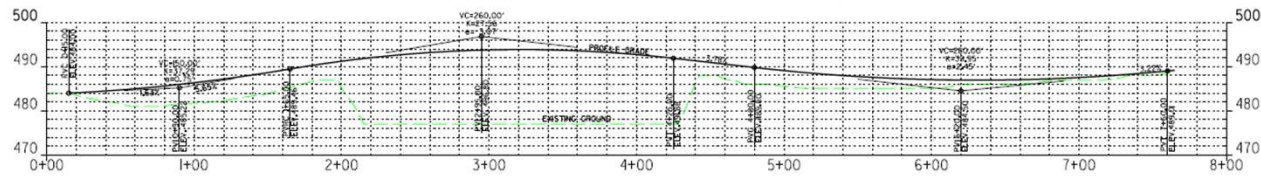
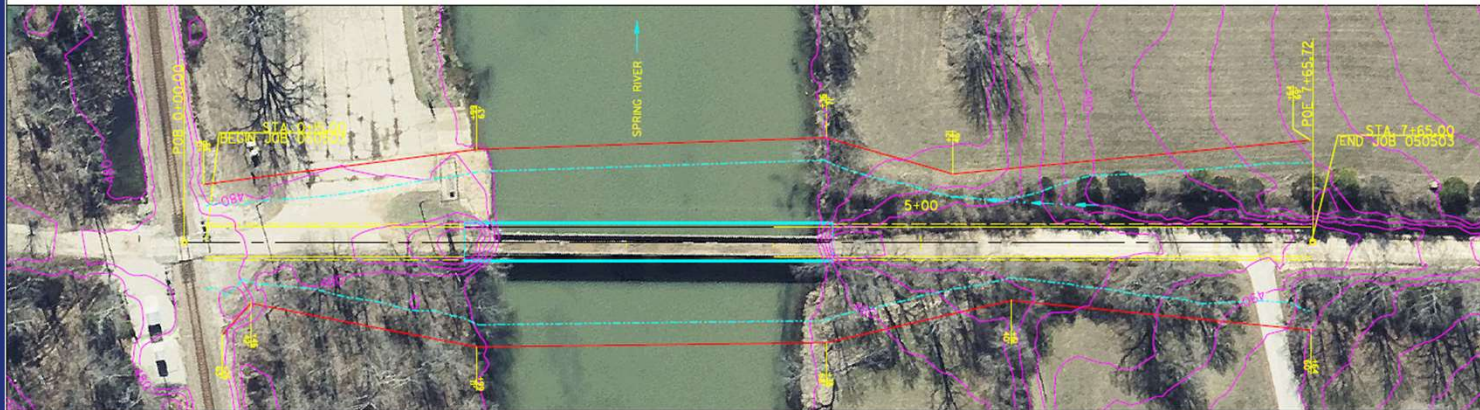


River Bend Drive

# LOCAL BRIDGE PROGRAM



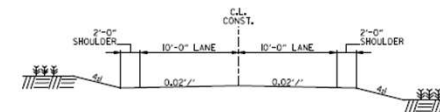
JOB 050503  
 SPRING RIVER STR. & APPRS. (FULTON CO) (S)  
 CONCEPT NO. 1  
 CONCRETE 6-SPAN (25'-50'-50'-50'-50'-25') STRUCTURE



LEGEND

	PROPOSED CENTERLINE
	PROPOSED CONST. LIMITS
	PROPOSED R.O.W.
	PROPOSED ROAD
	PROPOSED SHOULDER
	PROPOSED SPECIAL DITCH

SCALE: 1"=60'



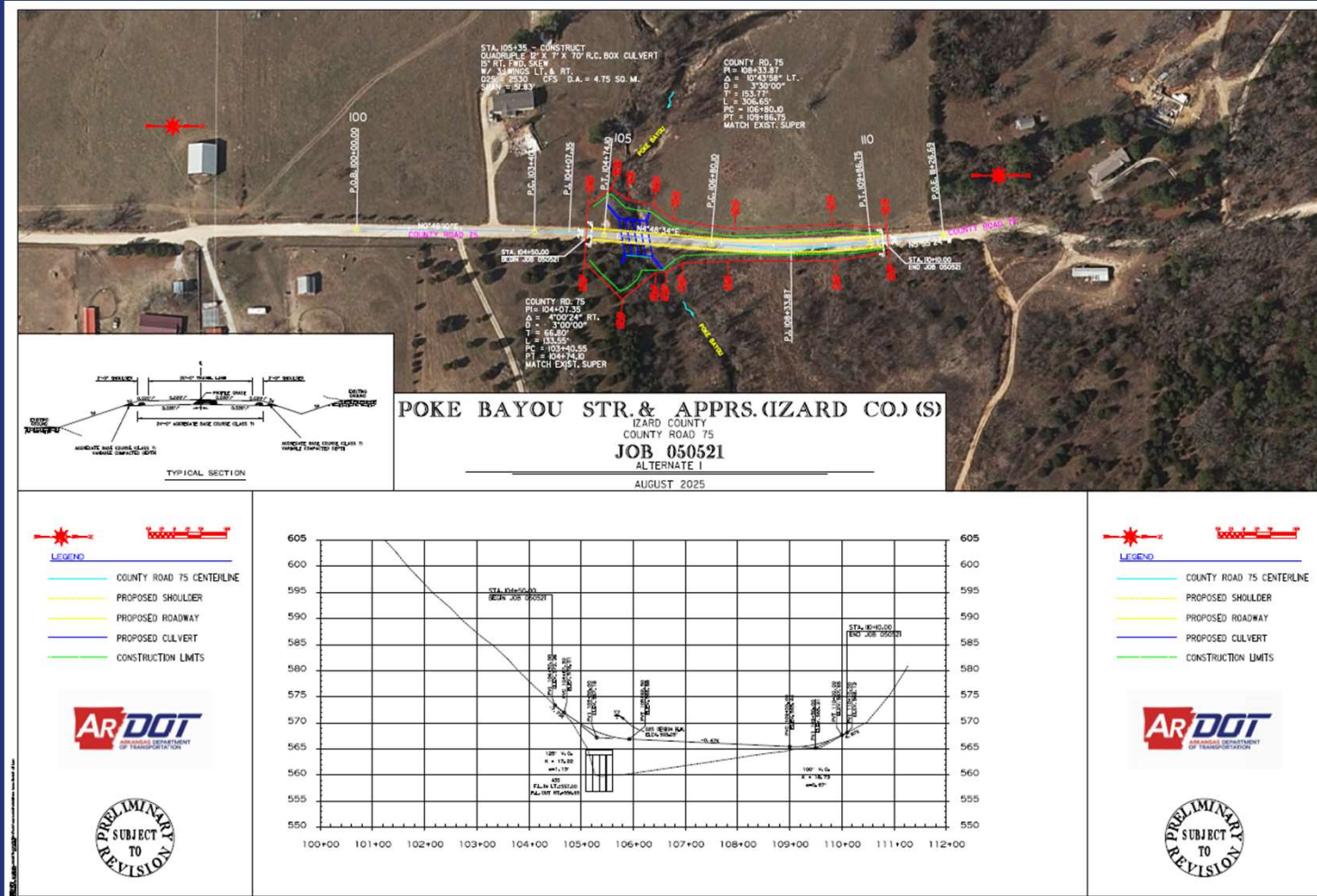
# LOCAL BRIDGE PROGRAM

- Job 050521, Poke Bayou Str. & Apprs. (Izard Co.) (S)
- Post feasibility study meeting complete, option chosen
- Sponsor: Izard County
- Total Project Cost Estimate: \$1,850,500
- Replace the Poke Bayou Bridge (Structure No. 21071) and approaches with 4 - 12'x7'x70' reinforced concrete boxes



Barren Fork Road

# LOCAL BRIDGE PROGRAM



# LOCAL BRIDGE PROGRAM

- Job 090739, Little Sugar Creek Str. & Apprs. (Pea Ridge) (S)
- Pre-feasibility study meeting complete
- Sponsor: Pea Ridge
- The only access for residents



Peck Road



QUESTIONS?

