

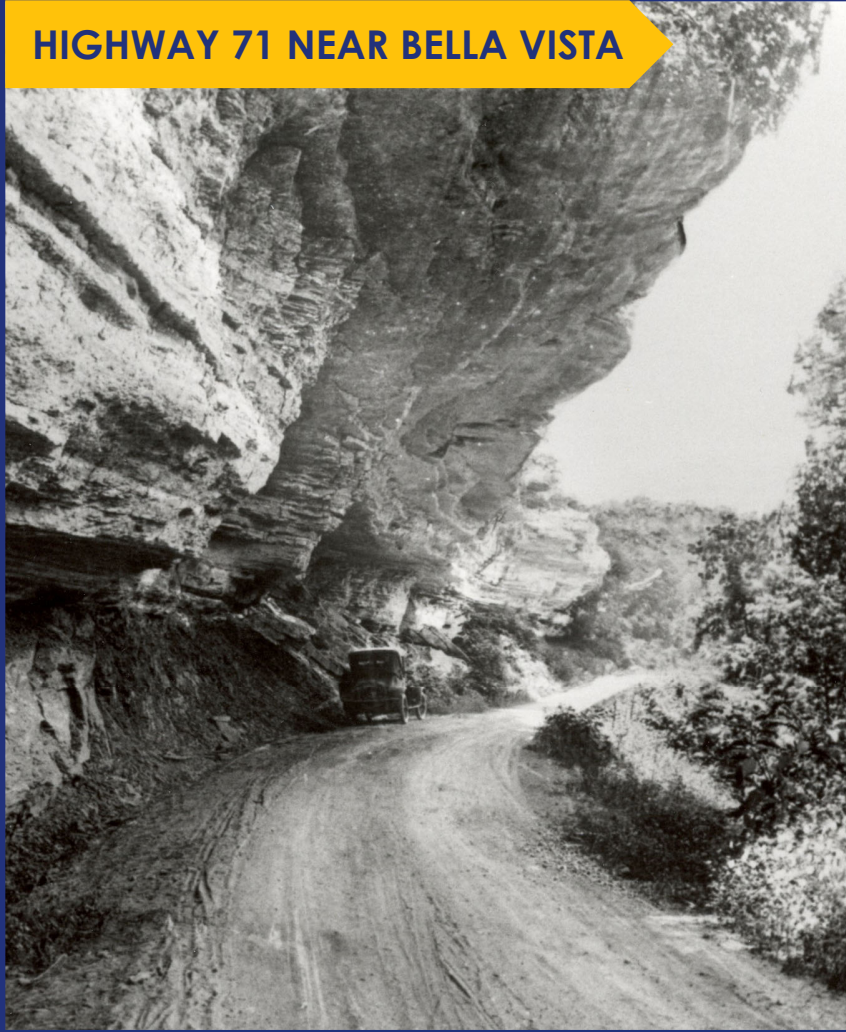
An aerial photograph showing a wide river with a concrete bridge crossing it. Two semi-trucks are visible on the bridge: a white one on the left and an orange one on the right. The surrounding landscape is lush with green trees and vegetation. A dark blue rectangular box is overlaid on the center of the image, containing white and yellow text.

ARKANSAS TRUCKING ASSOCIATION
**SAFETY MANAGEMENT
COUNCIL**

DIRECTOR JARED D. WILEY



HIGHWAY 71 NEAR BELLA VISTA



HISTORY

STATE HIGHWAY COMMISSION

- **1913** – First Commission Created
 - No Highway Department
 - No Highway System
- **3,600** – Vehicles
- **\$72,000** – Total Budget
- **36,000** – Miles of Public Roads

WIDENING OF HIGHWAY 67 NEAR MALVERN



“The advice, counsel and expert know-how, which is available from the Department’s own technical and administrative staffs, bear scant weight indeed when they are in conflict with the political pressures and political promises of the moment.” — Highway Audit Commission Report, 1951



ARKANSAS STATE HIGHWAY COMMISSION



**Chairman
Philip Taldo**



**Vice Chairman
Keith Gibson**



**Commissioner
Marie Holder**



**Commissioner
David Haak**



**Commissioner
Jerry L. Halsey, Jr.**

DECADES OF PROGRESS

1975

First State to Complete its Interstate System

1991

Highway Improvement Program

2011

Second Interstate Rehabilitation Program

2020

Renew Arkansas Highways Program

1985

Rural Road Program

1999

Interstate Rehabilitation Program

2012

Connecting Arkansas Program



ARDOT QUICK FACTS

**3RD LARGEST
STATE AGENCY**

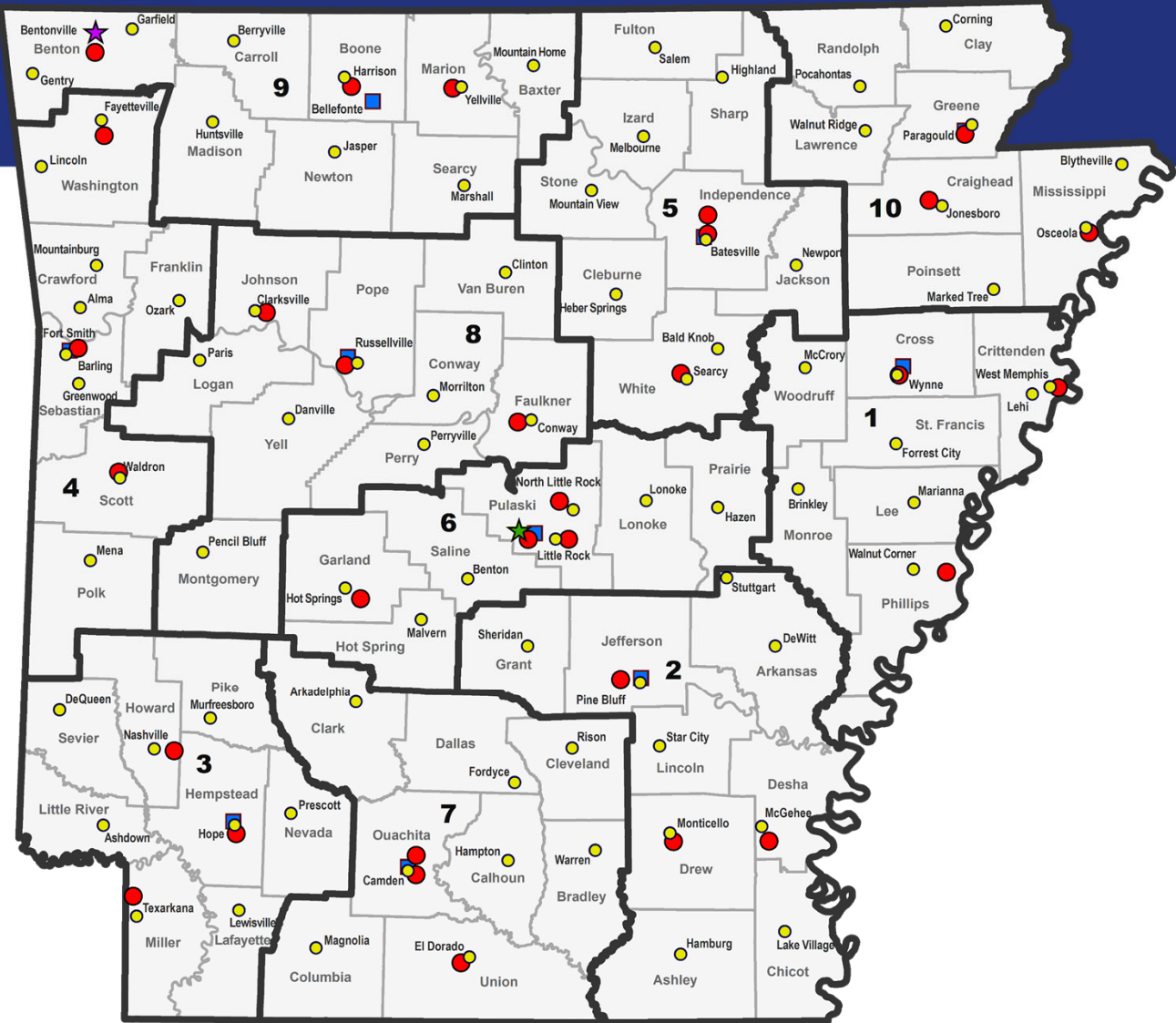
**MAINTAIN OVER
16,000 MILES OF
HIGHWAY & MORE
THAN 7,000 BRIDGES**

**CENTRAL
OFFICES
LOCATED IN
LITTLE ROCK**

**HIGHWAY SYSTEM
VALUED AT \$140
BILLION**

**HOME TO OLDEST LAW ENFORCEMENT
AGENCY IN ARKASNAS**

ARDOT OFFICES



-  **Central Offices**
-  **Northwest Office**
-  **District Headquarters**
-  **Resident Engineer Offices**
-  **Area Headquarters**

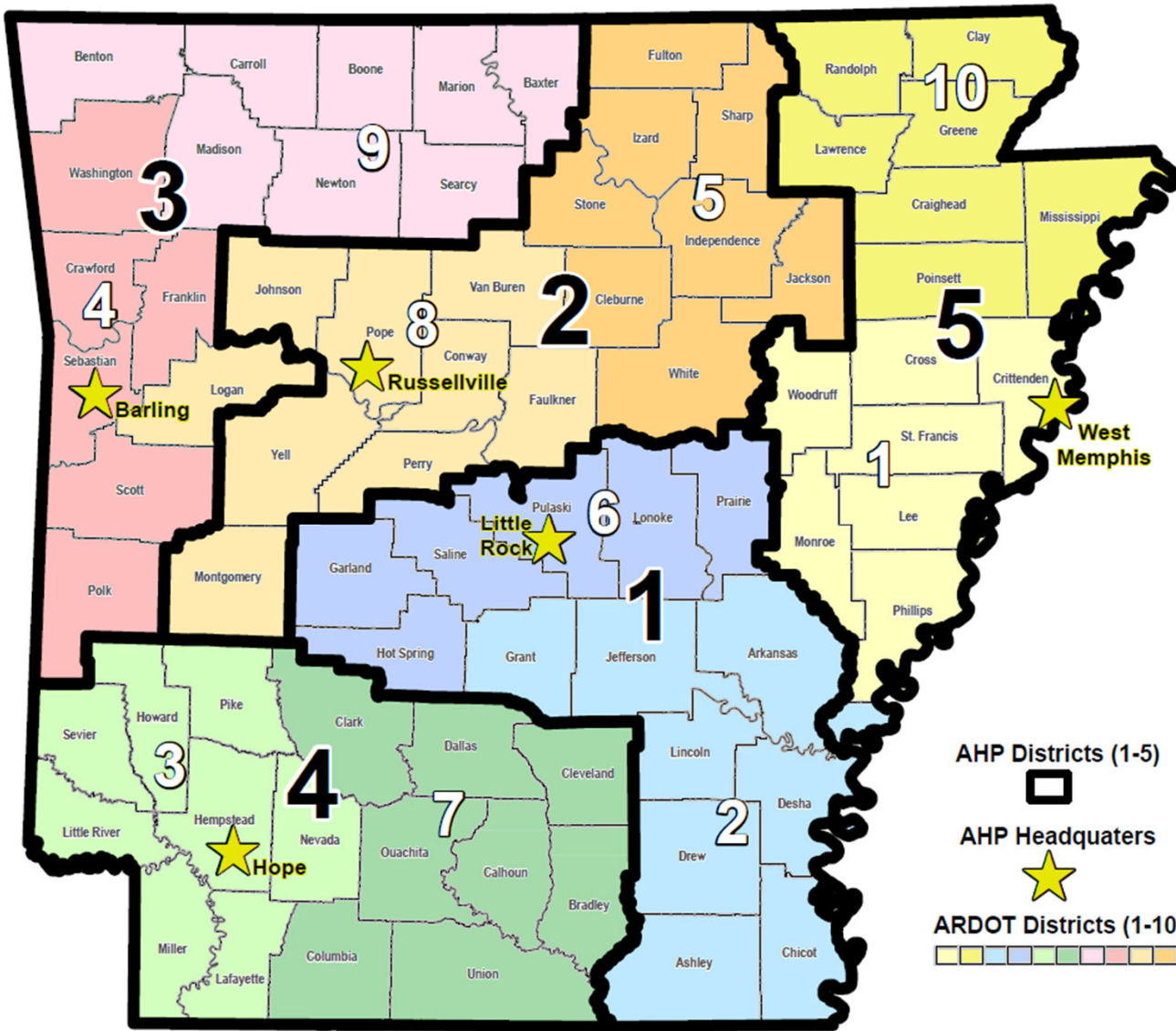
PUBLIC SERVICE





ARKANSAS HIGHWAY POLICE





ARKANSAS HIGHWAY POLICE

AHP Districts (1-5)



AHP Headquarters

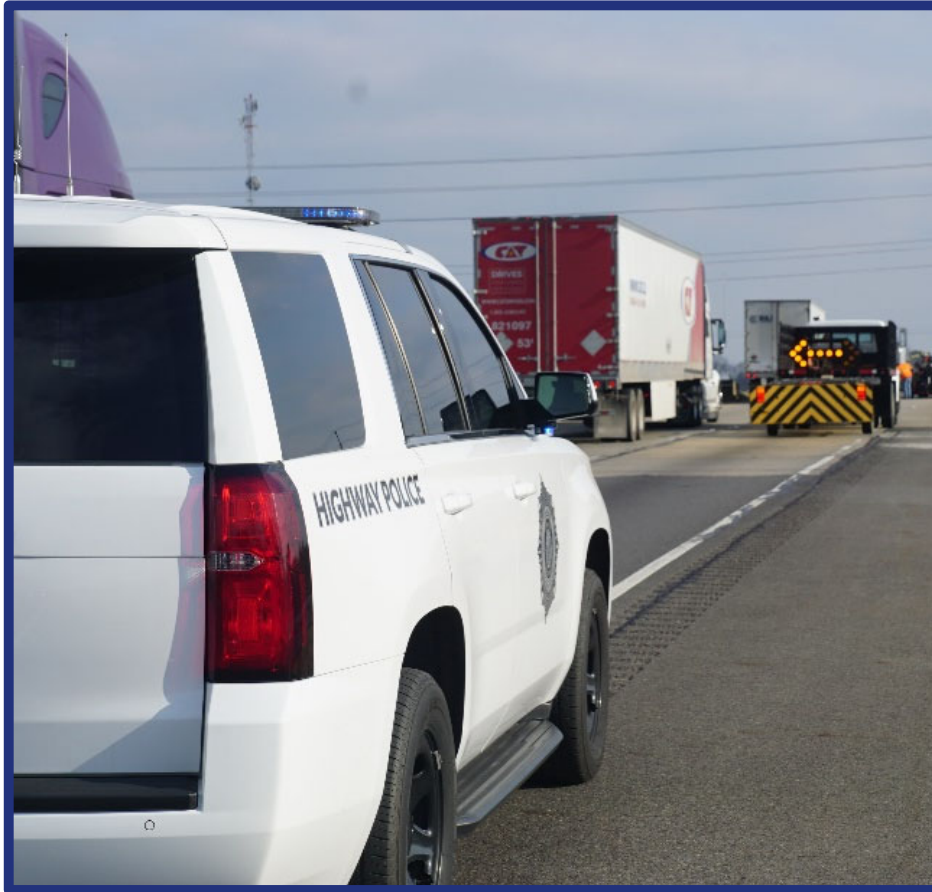


ARDOT Districts (1-10)





ASSISTING ARDOT & WORK ZONE SAFETY





INSPECTIONS & PERMITS





K9 PROGRAM



- **Began in the 1990s**
- **Program Ended After Retirement of Dogs**
- **Started Inspections Again in February 2025**





K9 PROGRAM



K9 Officer Jackie



K9 Officer Mack

2025

21,000 POUNDS OF ILLEGAL
DRUGS SEIZED

\$64 MILLION STREET VALUE

ARKANSAS COMMERCIAL TRUCK SAFETY & EDUCATION PROGRAM (ACTSEP)



- Created by Act 1176 of 2013
- Provides Funding for the Advancement of Roadway Safety Programs
- Ensures Safe Movement of Goods by Commercial Trucks on Arkansas Highways

ACTSEP ELIGIBLE PROJECTS

- **Industry Training and Education**
- **Research**
- **Capital Improvements**
- **Safety Enhancements**
- **Operational Improvements**
- **Increased Enforcement**
- **Regulatory Compliance**





Interstate 40 Truck Parking Lot



ATA Share the Road/Road Team



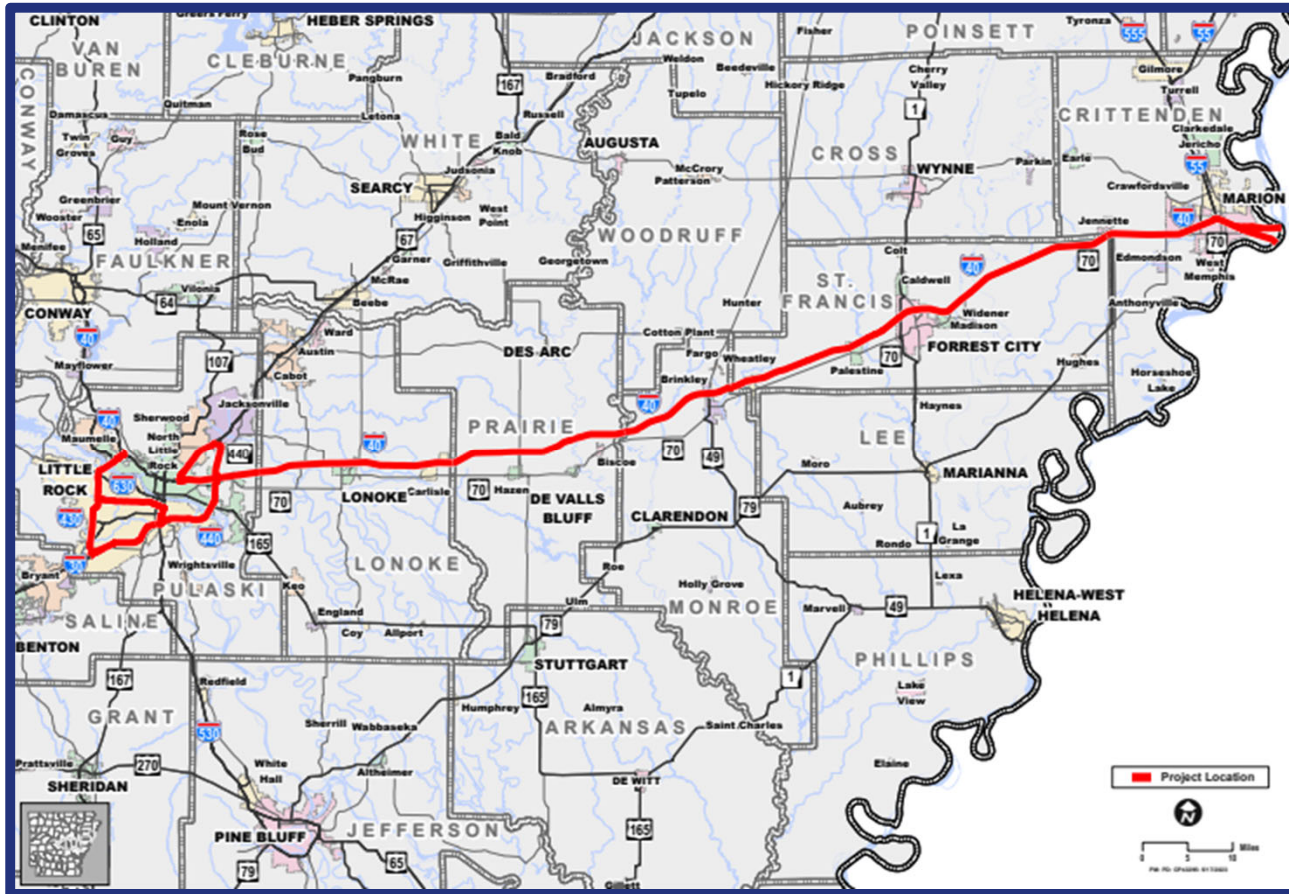
Highway Police Training Facility



Drivewyze



WRONG WAY DETECTION SYSTEM



IDRIVE ARKANSAS

Map Key

Live Traffic

- Normal
- Slow
- Very Slow
- Stopped
- Google Maps Indicated

Highway Closures

- ⊗ Closed Highway
- ⊗ Flooded Highway
- ⚠ Incident

Work Zones

- ⚠ Construction
- ⚠ Current Lane Closure
- ⚠ Future Lane Closure

Traffic Cameras

- 📹 Traffic Camera
- 📹 Work Zone Camera
- 📹 Truck Parking

Cluster Markers

- 📍 Cameras
- 📍 Exit Numbers

Traffic Camera ✕

INTERSTATE

40

Galloway (Exit 161)

WESTBOUND

Camera View: 📹

Temperature: 88°

Elevation: 6008

ARDOT does not record or store traffic camera footage.

Highway Closure ✕

65

Boone County

Closure Reason: Construction

Travel Direction: Both

Lane(s) Closed: All

Total Distance: 0.09 mile

Detour: Available

Reported By: ARDOT

Date / Time: March 26, 2025 at 11:02 AM CDT

Last Update: March 26, 2025 at 11:02 AM CDT

Note: All information is the latest available and presented in real-time.

Description

The purpose of this project is to replace the bridge and improve approximately 0.097 miles of roadway on Highway 65B in Boone County.

Detour

The suggested detour uses Hwy. 65 and Hwy. 7.

2025 LEGISLATIVE SESSION

Green Lights

Act 209

Amendment to Driver's
Manual

Act 117

Safety for Mobile Operations

Act 327

School & Office Trailer
Deregulation

Act 256

Changes to Bonding
Authority

Act 217

CM-GC Changes

Act 328

Surplus Property

Act 210

Utility Relocation

Act 699

Denatured Ethanol

- - -



SLOW DOWN, PHONE DOWN CAMPAIGN

Year 4

- **Focus:**
Distracted Driving
- **Target Demographic:**
18-24 Year-olds







STREET SMART EDUCATIONAL CAMPAIGN



- **2025-2026 School Year**
- **6th – 8th Graders Statewide**
- **Focus: Bicycle, Passenger, & Pedestrian Safety**

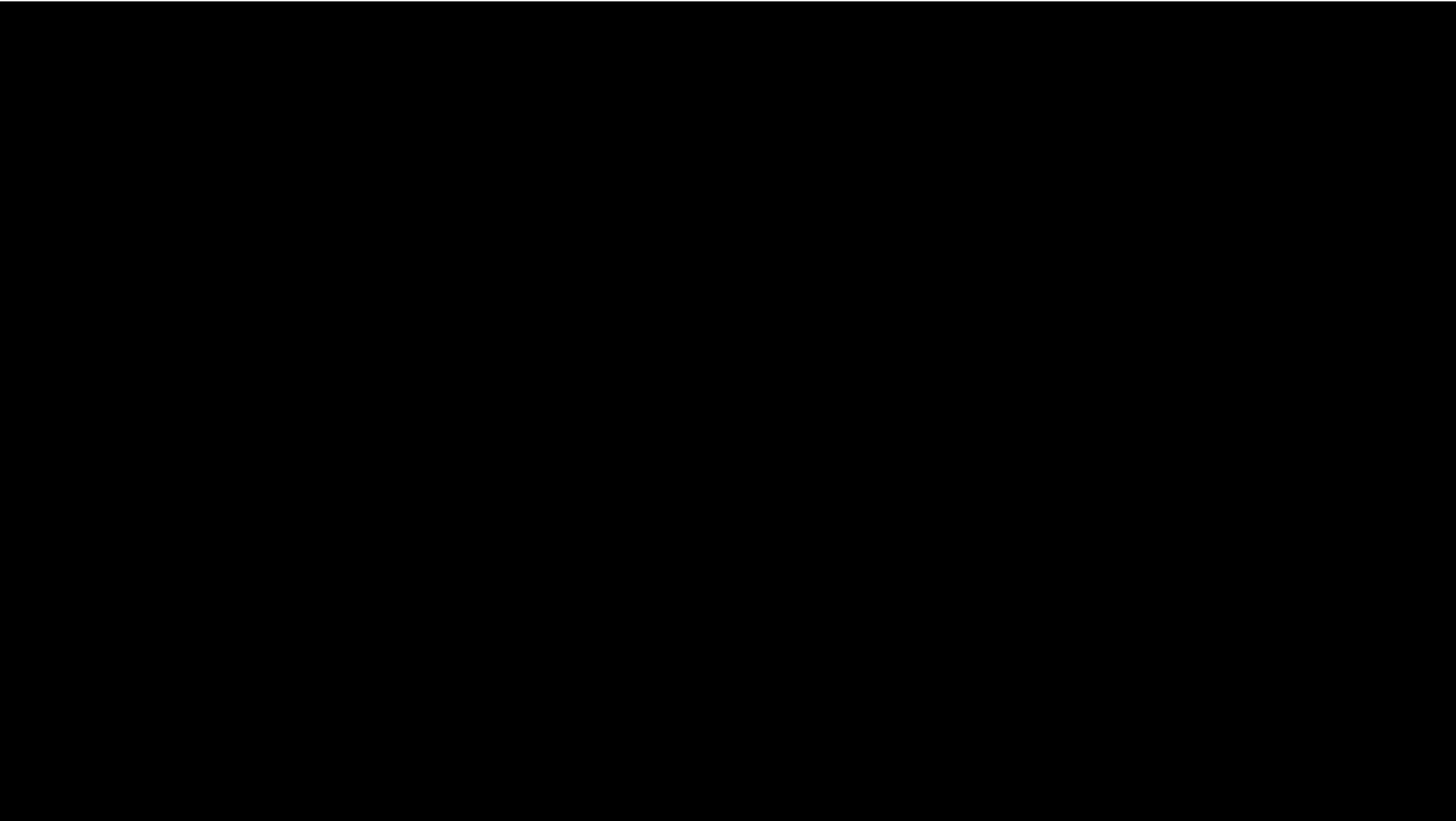


STREET SMART EDUCATIONAL CAMPAIGN



Scan the QR code to view or request materials





TOOLS TO IMPROVE SAFETY

Gator Getter



Sweeper



Lane Blade



MEMORIAL UPDATE



An aerial photograph showing a wide river with a concrete bridge crossing it. Two semi-trucks are visible on the bridge: a white one on the left and an orange one on the right. The surrounding landscape is lush with green trees and vegetation. A dark blue rectangular box is overlaid in the center of the image, containing white and yellow text.

ARKANSAS TRUCKING ASSOCIATION
**SAFETY MANAGEMENT
COUNCIL**

DIRECTOR JARED D. WILEY

