



# **2024 ARKANSAS CONCRETE PAVEMENT CONFERENCE**

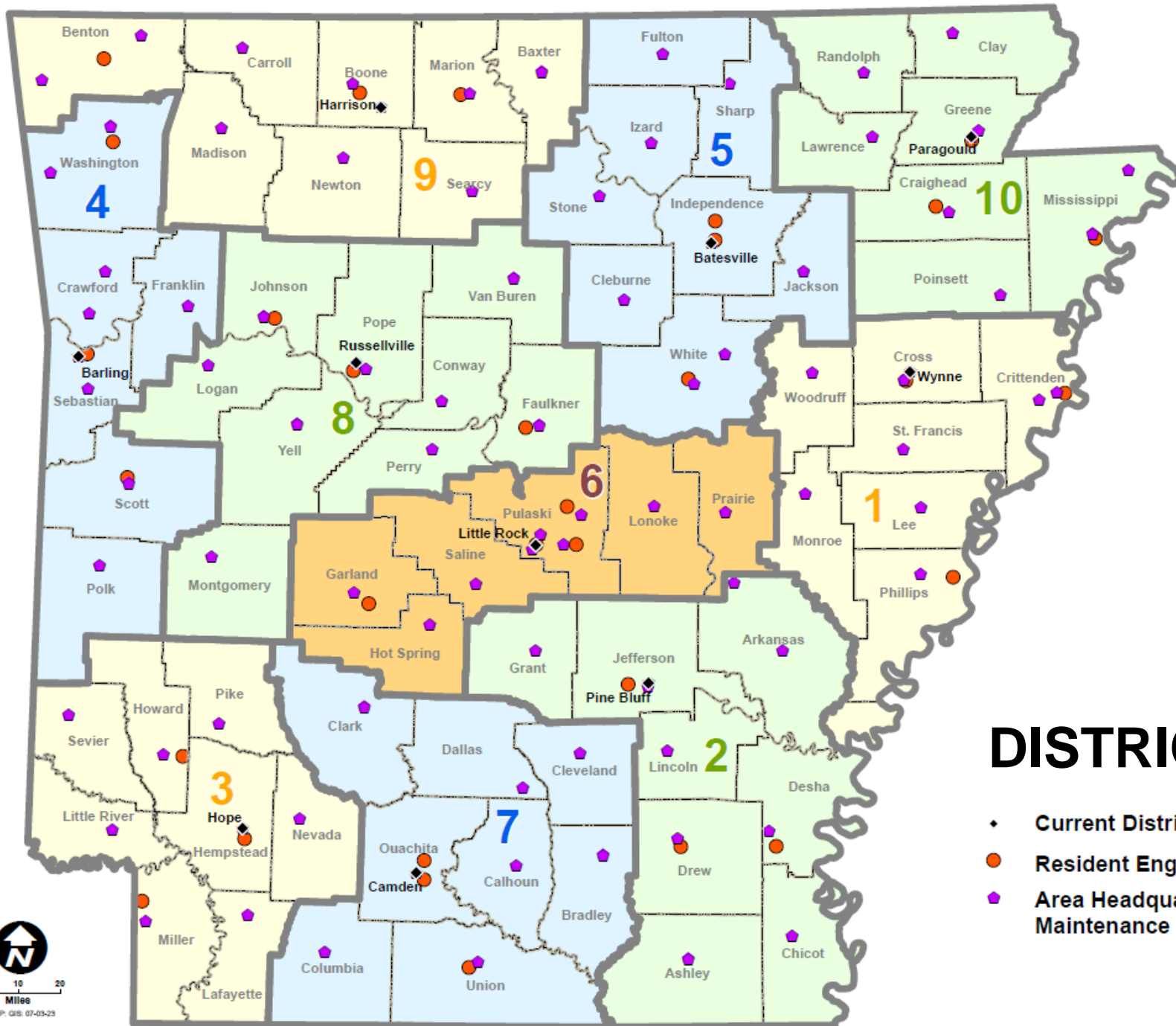
**LORIE H. TUDOR | ARDOT DIRECTOR  
AUGUST 14, 2024**





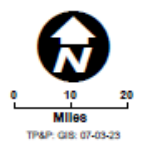
# ARDOT QUICK FACTS

- 3<sup>rd</sup> Largest State Agency
- Approximately 3,700 Employees
- Constitutionally Independent
- 16,450 Highway Miles
- More Than 7,000 Bridges
- 10 Districts Statewide



# DISTRICT MAP

- ◆ Current District Headquarters
- Resident Engineer Offices
- ◆ Area Headquarters/ Maintenance Facility



# ARKANSAS STATE HIGHWAY COMMISSION





# ANNUAL FUNDING

**01**

½-cent Sales Tax  
Funds

\$275 Million

**02**

Regular State  
Funds

\$600 Million

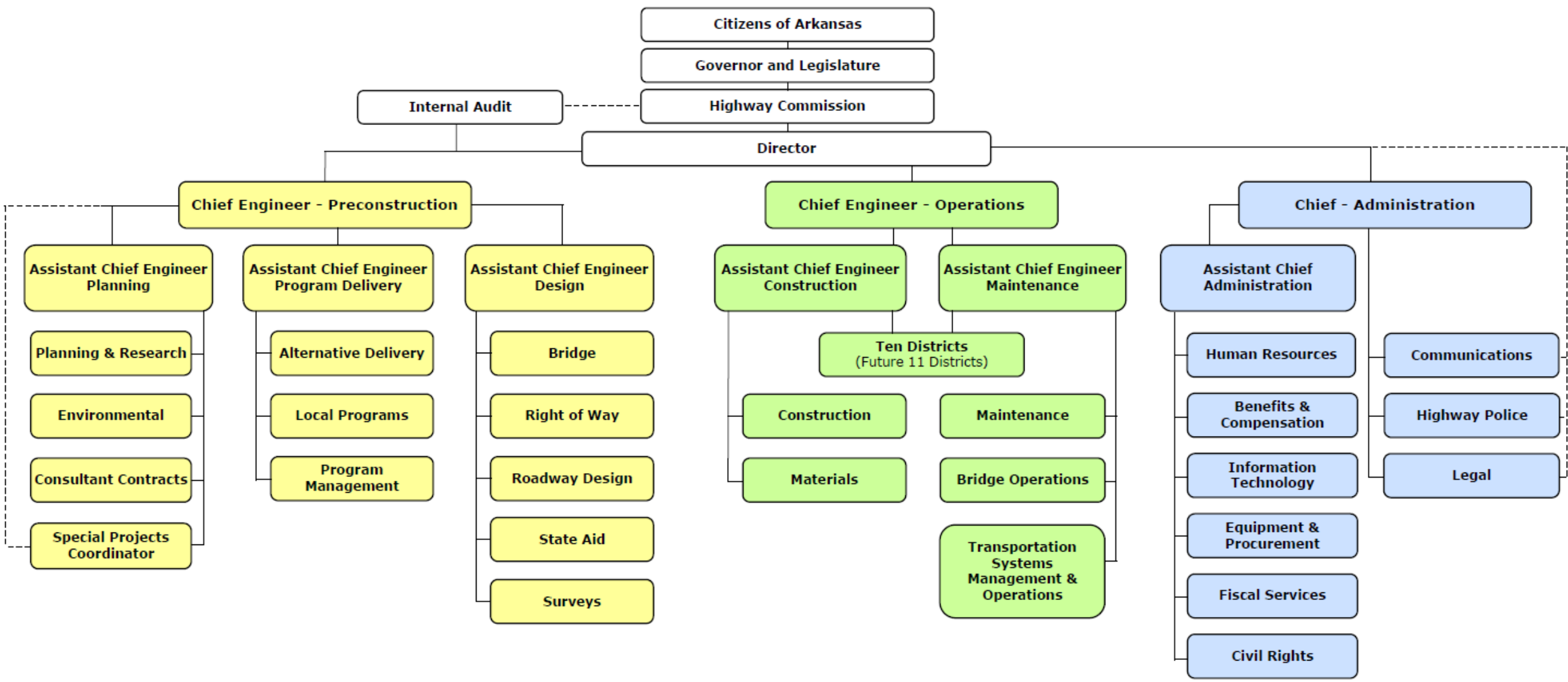
**03**

Federal Funds

\$800 Million



# ARKANSAS DEPARTMENT OF TRANSPORTATION ORGANIZATION CHART





# NEW ROLES



**JARED WILEY**

Chief Engineer  
Preconstruction



**REX VINES**

Chief Engineer  
Operations



**KEVIN THORNTON**

Chief Administration



# NEW ROLES



**MIKE FUGETT**

ACE  
Design



**JESSIE JONES**

ACE  
Planning



**KELI WYLIE**

ACE  
Program Delivery



**CHAD ADAMS**

ACE  
Construction



**STEVE FRISBEE**

ACE  
Maintenance



**CRYSTAL WOODS**

Assistant Chief  
Administration



# STRATEGIC PLAN

## 2023-2028






### 2023-2028 STRATEGIC PLAN

#### PURPOSE

To deliver a modern transportation system to enhance safety and quality of life in Arkansas

#### CORE VALUES

 <p><b>Safety</b> Committed to Arkansans' wellbeing</p>	 <p><b>Trust</b> Dependable public service</p>	 <p><b>Excellence</b> Quality in everything we do</p>	 <p><b>Accountability</b> Responsible and transparent</p>	 <p><b>Modern</b> Innovating for the future</p>
--	---	--	--	--

*Safety first, working as a TEAM*

#### GOALS & STRATEGIC OBJECTIVES

<h5>SYSTEM</h5> <p>Provide innovative transportation solutions to improve safety and mobility</p> <ul style="list-style-type: none"><li>Plan, develop, operate, and maintain an efficient, reliable, and resilient highway system</li><li>Focus on all aspects of safety</li><li>Continue to emphasize system preservation</li><li>Excel at project delivery</li><li>Manage assets in a transparent, data-driven, and cost-effective manner</li><li>Ensure environmental stewardship</li></ul>	<h5>EMPLOYEES</h5> <p>Ensure ArDOT is a great place to work</p> <ul style="list-style-type: none"><li>Recruit and retain quality employees</li><li>Encourage and empower decision making at all levels</li><li>Invest in employee career development</li><li>Promote teamwork and accountability</li><li>Encourage innovation and risk-based decision making</li><li>Strengthen knowledge management</li></ul>
<h5>SERVICE</h5> <p>Deliver reliable and efficient customer service</p> <ul style="list-style-type: none"><li>Strive to exceed customer expectations</li><li>Provide timely and courteous customer service in all communications</li><li>Be transparent</li><li>Ensure compliance with all relevant regulations</li></ul>	<h5>PARTNERS</h5> <p>Collaborate and strengthen partnerships</p> <ul style="list-style-type: none"><li>Listen to Arkansas residents and community leaders</li><li>Engage with federal, state, and local governments</li><li>Partner with industry to improve efficiency</li><li>Learn from peer states' best practices</li></ul>






# SAFETY INITIATIVES

## PROGRAMS & POLICIES



### 10-POINT BEST PRACTICE PLAN FOR RESPONDING TO DEBRIS REMOVAL

-  **1** Turn on warning lights as you approach debris.
-  **2** Park in advance of debris on shoulder closest to debris, as far from traffic as possible.
-  **3** **Always use a spotter** on roadways that are High-Speed (65MPH) or Moderate to High-Volume.
-  **4** Consider whether the hazard warrants the danger involved in removing the hazard.
-  **5** Keep an eye on and face on-coming traffic, **NEVER** turn your back on traffic.
-  **6** If the hazard in the travel lane can be removed from the shoulder with a tool, use tool during an adequate gap in traffic.
-  **7** When High-Speed (65 MPH) and High-Volume Traffic exists, **NEVER** enter or cross a live lane of traffic for any reason.
-  **8** If conditions warrant entering the live lane, **WAIT** until certain you have time to walk to get object, not run, and walk back to safety.
-  **9** Avoid crossing more than one lane of traffic.
-  **10** **If in doubt, DON'T GO.** Use a mobile lane closure or truck mounted device to remove debris from live lanes, especially on multi-lane freeways.



# REPORT SAFETY CONCERNS

We want your voice to be heard. Employees should report concerns to the Safety Section.



SCAN THE QR CODE\* TO REPORT!

\* <https://cvent.me/o9DLIZ>



**SAFETY  
INITIATIVES  
GREEN LIGHTS**



# WORK ZONE SAFETY

## SPEED ENFORCEMENT CAMERAS

- Began August 1, 2023
- Present in Interstate work zones
- Officer must be present to issue citation
- Increases safety for drivers, officers, and road crews



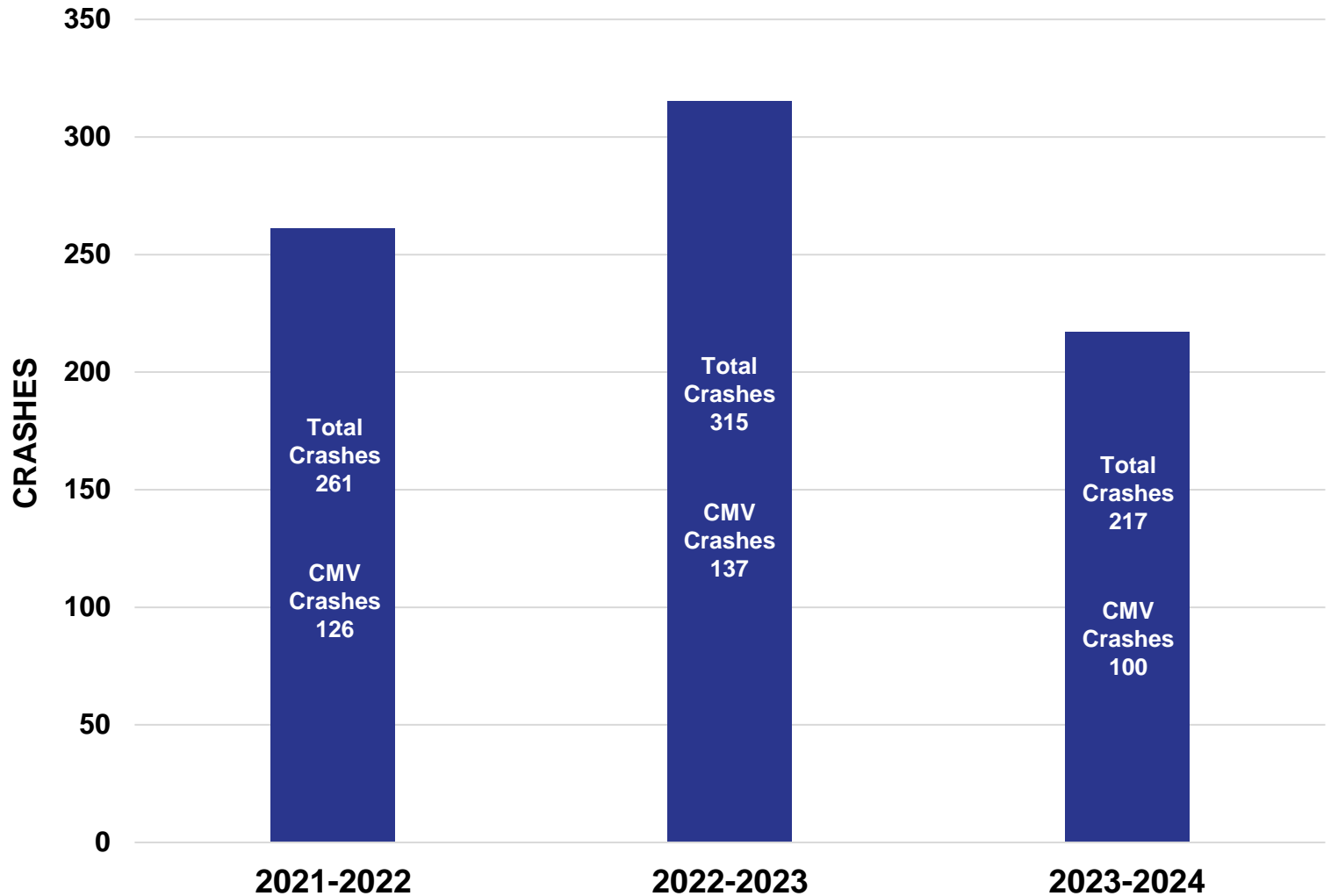


# WORK ZONE SAFETY

## SPEED ENFORCEMENT CAMERAS

25% Decrease - Total  
24% Decrease – CMV  
6,126 Warnings  
1,299 Citations  
*\*since August 2023*

### Saline County (Benton) Work Zone Before and After Crash Statistics | Speed Enforcement Camera



■ Total Per Fiscal Year



WARNING  
DO NOT DISTURB THE AIR BAGS

WARNING  
DO NOT DISTURB THE AIR BAGS

PHONE  
DOWN

ROAD  
WORK  
AHEAD

aight is the right  
it's good!  
Someone bring their  
Speaker  
can't stay for long  
can't hear you

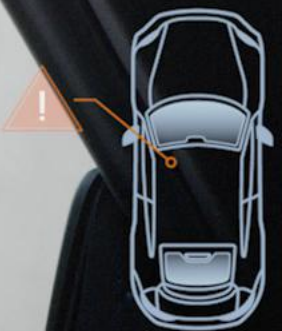
11:12

75

STREETS REAR LOCK

TIME IN WORK ZONE

0:09







# Keeping Georgians Safe

One classroom at a time



# Road Safety Videos



Seatbelts



Distracted Brain



Bike Lanes



3 Seconds



# My Road to Safety

This journal and activity book is perfect for grades 3-5.



Download a PDF of the Book

# Interactive Games



## Virtual Field Trip Across Georgia

See great destinations and complete road safety challenges

For Grades 3-6

Start



## Virtual Road Safety Game

Remove driving distractions and customize your car

For Grades 6-12

Play Now



# FREE Classroom Posters

Get PDFs of our road safety classroom posters



Road Safety: 5 Ways We Can Make an Impact

For Grades K-5

Download



Say No to Driving Distractions

For Grades 6-12

Download



Don't Be a Statistic

For Grades 6-12

Download

# FREE Lesson Plans

Please click on the appropriate image below to download the lesson plan.

## K-5 Lessons and Worksheets

### DESIGN YOUR OWN ROUNDABOUT

Students will put their engineering skills to the test while improving safety on the road.

**Time Required:** 15-30 minutes

**Materials:**

- Pipe cleaner
- Toy cars
- Safe intersections handout

**Prep:** Gather pipe cleaners, cutting safety scissors, and toy cars. Have students work in pairs to build and test their own roundabouts to better understand how they work.

**Objectives:** Students will learn why roundabouts are safer compared to traditional intersections. They will also have the chance to build and test their own roundabouts to better understand how they work.

**Elevate Your Lesson:**

- Discuss roundabouts and the value of engineering.
- Have students build their own roundabouts.

**Instructions for the Lesson:**

- 1 TALK ABOUT ROUNDABOUTS:** Research online how effective roundabouts can be when reducing the number of accidents. Have students or have them research the value of roundabouts. Give students a safe intersection handout to fill out.
- 2 BUILD A ROUNDABOUT:** Ask them to build out the pipe cleaners and let students create their own.

Design Your Own Roundabout

### SAFE INTERSECTIONS

Learn how roundabouts can make a big difference in road safety.

Name: \_\_\_\_\_ Date: \_\_\_\_\_

**Traditional Intersection**  
Traditional intersections have 32 potential conflict points.

**Roundabout**  
With a roundabout design, there are only 8 conflict points.

**3 More Roundabout Facts**  
Research and write facts you learn.

**DID YOU KNOW?**  
Roundabouts can decrease fatal crashes by 90%.

Safe Intersections

### CREATE YOUR OWN SAFETY SIGN

Students will put their creativity to the test while also helping their communities.

Students can have a powerful impact on the way people drive around their communities. They can help make the roads safer by creating a sign that can be used to warn drivers of a danger or to encourage them to drive more safely.

**Instructions for the Lesson:**

- 1 TALK ABOUT CAR SAFETY:** Read students research facts and statistics about car safety, and write down what they think is the most important fact for the car when it comes to car and road safety. Have students research and write a message for their sign.
- 2 TALK ABOUT ROAD SAFETY:** Have students research facts and statistics about road safety. Some of the facts should be from the sign they will be making to help them understand why it is important to have a sign that can be used to warn drivers of a danger or to encourage them to drive more safely.
- 3 CREATE SIGNS:** After they've researched, have students create a sign for their community.

**Time Required:** 30-45 minutes

**Materials:**

- Paper
- Sign templates

**Prep:** Print copies of the safety sign templates, and make sure you have all supplies for everyone.

**Objective:** Students will learn about common road and car safety challenges and they will use their own creativity to come up with solutions through a sign.

**Elevate Your Lesson:**

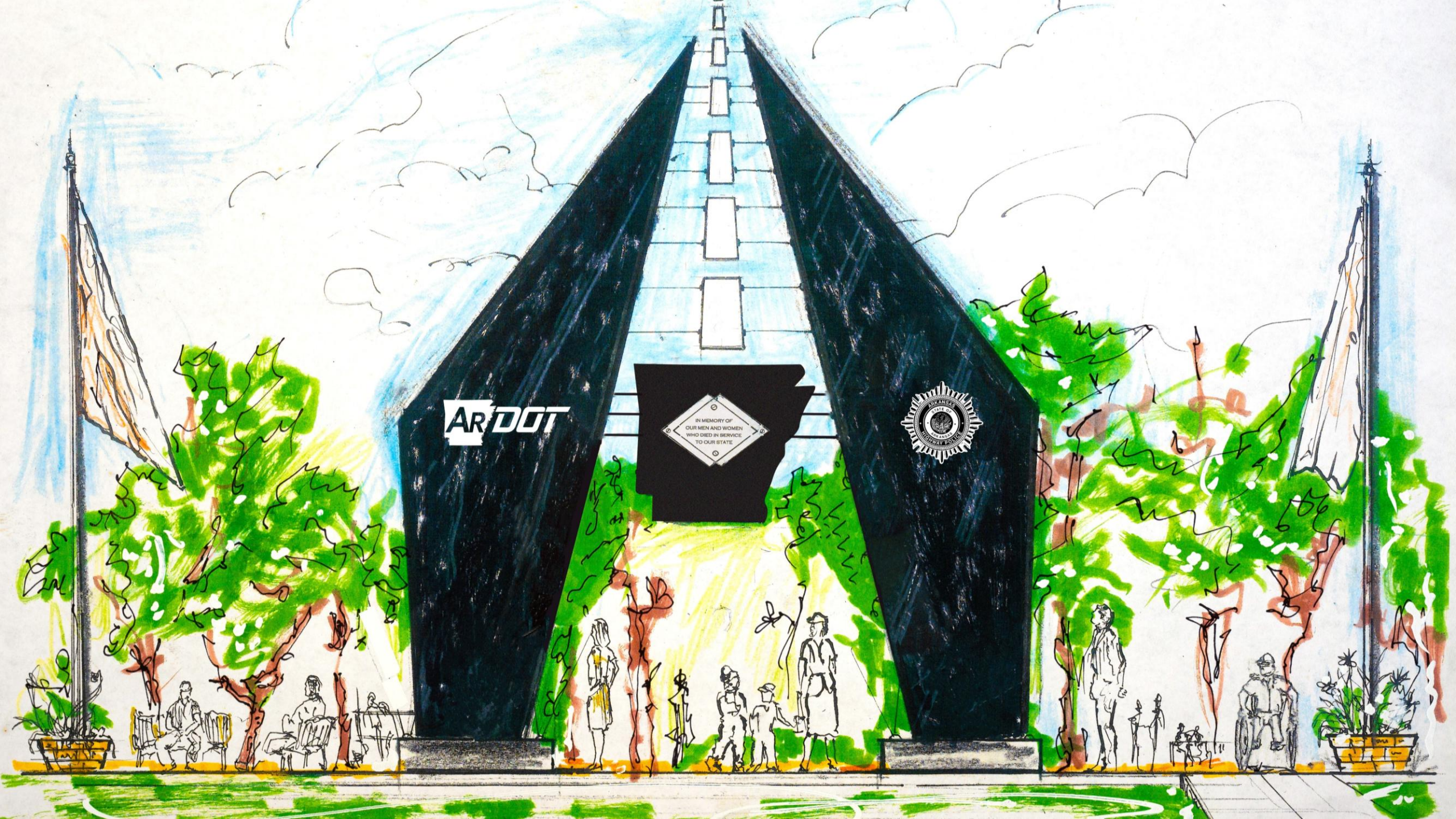
Create Your Own Safety Sign & Template



# Keeping Georgians Safe

One classroom at a time





**AR DOT**

IN MEMORY OF  
OUR MEN AND WOMEN  
WHO DIED IN SERVICE  
TO OUR STATE



# STRATEGIC PLAN

## 2023-2028



## 2023-2028 STRATEGIC PLAN

### PURPOSE

To deliver a modern transportation system to enhance safety and quality of life in Arkansas

### CORE VALUES



**Safety**  
Committed to  
Arkansans' wellbeing



**Trust**  
Dependable  
public service



**Excellence**  
Quality in everything  
we do



**Accountability**  
Responsible and  
transparent



**Modern**  
Innovating for  
the future

*Safety first, working as a TEAM*

### GOALS & STRATEGIC OBJECTIVES

#### SYSTEM

Provide innovative transportation solutions to improve safety and mobility

- Plan, develop, operate, and maintain an efficient, reliable, and resilient highway system
- Focus on all aspects of safety
- Continue to emphasize system preservation
- Excel at project delivery
- Manage assets in a transparent, data-driven, and cost-effective manner
- Ensure environmental stewardship

#### EMPLOYEES

Ensure ArDOT is a great place to work

- Recruit and retain quality employees
- Encourage and empower decision making at all levels
- Invest in employee career development
- Promote teamwork and accountability
- Encourage innovation and risk-based decision making
- Strengthen knowledge management

#### SERVICE

Deliver reliable and efficient customer service

- Strive to exceed customer expectations
- Provide timely and courteous customer service in all communications
- Be transparent
- Ensure compliance with all relevant regulations

#### PARTNERS

Collaborate and strengthen partnerships

- Listen to Arkansas residents and community leaders
- Engage with federal, state, and local governments
- Partner with industry to improve efficiency
- Learn from peer states' best practices





# **2024 ARKANSAS CONCRETE PAVEMENT CONFERENCE**

**LORIE H. TUDOR | ARDOT DIRECTOR  
AUGUST 14, 2024**

