



**AMERICAN COUNCIL OF
ENGINEERING COMPANIES OF AR
ANNUAL AWARDS LUNCHEON**

KELI WYLIE, P.E.
APRIL 22, 2025





ARDOT QUICK FACTS

- **3rd Largest State Agency**
- **Approximately 3,900 Employees**
- **Maintain 16,371 miles of Highway and 7,335 Bridges**
- **Highway System valued at \$140 billion**
- **Central Offices in Little Rock**



FULL

STEAM

AHEAD

Safety • Trust • Excellence • Accountability • Modern



I-430 Bridge



SAFETY



YEAR ONE



2025-2026 school year



6-8th graders statewide



Seatbelts, bicycle and pedestrian safety & distracted brains



SLOW DOWN
PHONE DOWN
in work zones

YEAR FOUR



2025-2026



18 to 24-year-olds statewide



Distracted driving



SAFETY INITIATIVES



Green Lights



Gator Getter

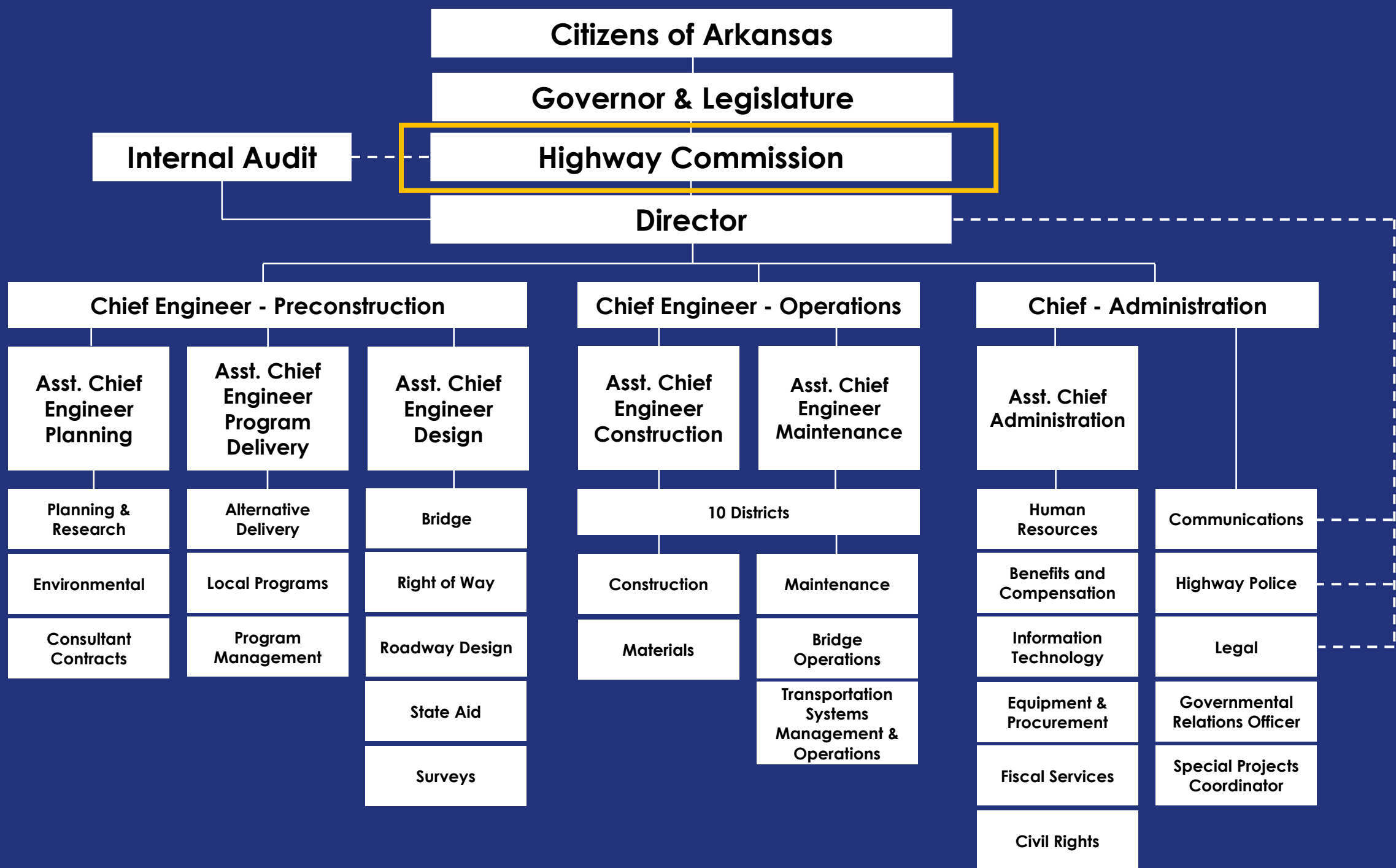


Lane Blade

I-55 Bridge



TRUST



ARKANSAS STATE HIGHWAY COMMISSION



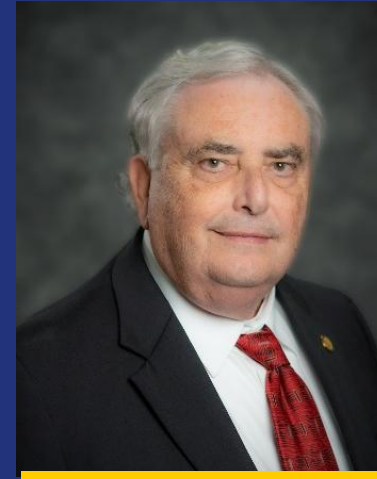
**Chairman
Philip Taldo**



**Vice Chairman
Keith Gibson**



**Commissioner
Marie Holder**



**Commissioner
David Haak**



**Commissioner
Jerry Halsey**

Citizens of Arkansas

Governor & Legislature

Internal Audit

Highway Commission

Director

Chief Engineer - Preconstruction

Chief Engineer - Operations

Chief - Administration

Asst. Chief Engineer Planning

Asst. Chief Engineer Program Delivery

Asst. Chief Engineer Design

Asst. Chief Engineer Construction

Asst. Chief Engineer Maintenance

Asst. Chief Administration

Planning & Research

Alternative Delivery

Bridge

10 Districts

Human Resources

Communications

Environmental

Local Programs

Right of Way

Construction

Maintenance

Benefits and Compensation

Highway Police

Consultant Contracts

Program Management

Roadway Design

Materials

Bridge Operations

Information Technology

Legal

State Aid

Transportation Systems Management & Operations

Equipment & Procurement

Governmental Relations Officer

Surveys

Fiscal Services

Special Projects Coordinator

Civil Rights



DIRECTOR JARED D. WILEY

Citizens of Arkansas

Governor & Legislature

Internal Audit

Highway Commission

Director

Chief Engineer - Preconstruction

Asst. Chief Engineer Planning

Planning & Research

Environmental

Consultant Contracts

Asst. Chief Engineer Program Delivery

Alternative Delivery

Local Programs

Program Management

Asst. Chief Engineer Design

Bridge

Right of Way

Roadway Design

State Aid

Surveys

Chief Engineer - Operations

Asst. Chief Engineer Construction

Construction

Materials

Asst. Chief Engineer Maintenance

Maintenance

Bridge Operations

Transportation Systems Management & Operations

10 Districts

Chief - Administration

Asst. Chief Administration

Human Resources

Benefits and Compensation

Information Technology

Equipment & Procurement

Fiscal Services

Civil Rights

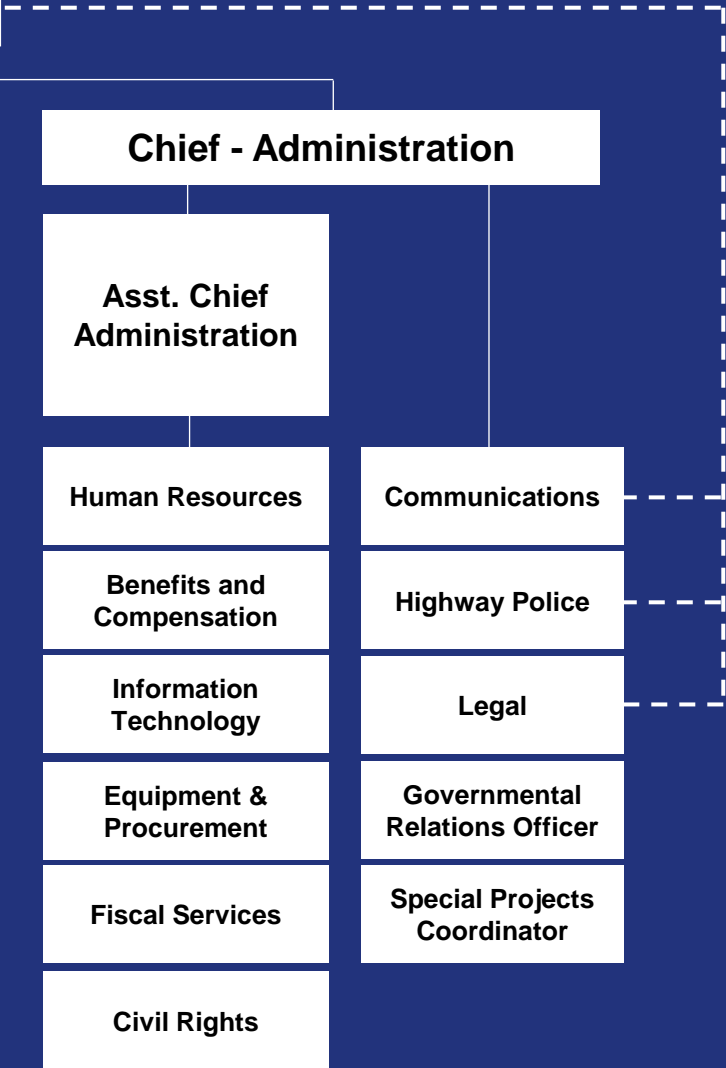
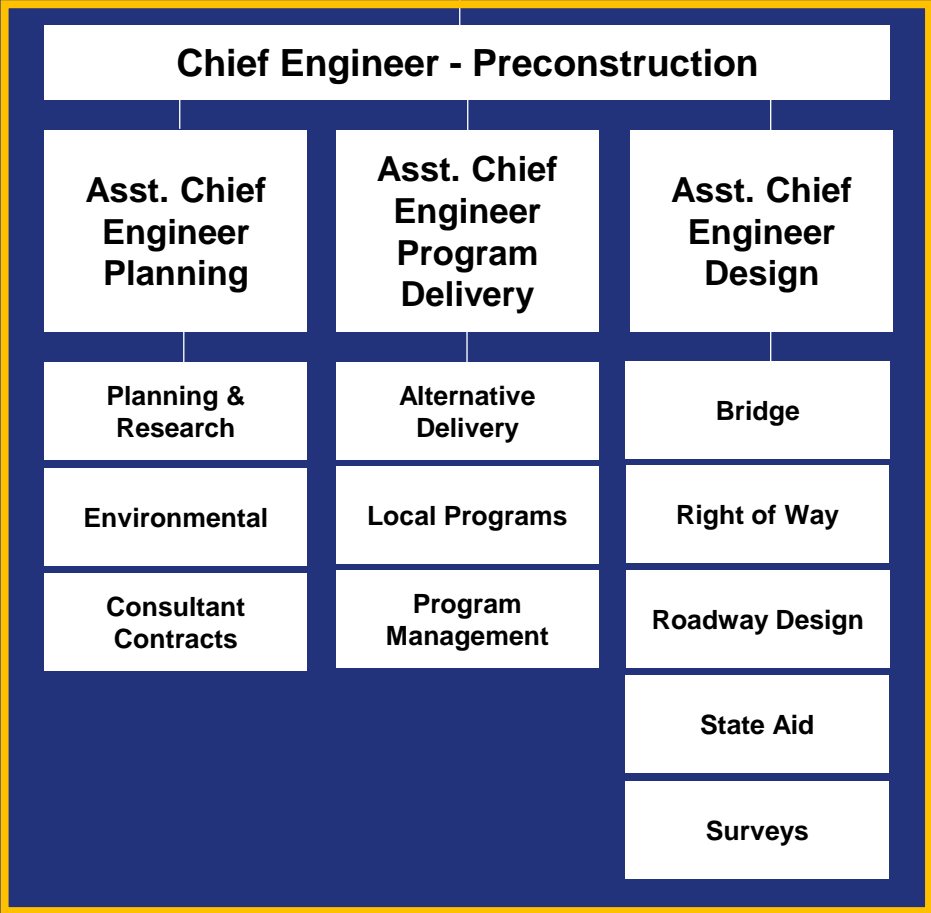
Communications

Highway Police

Legal

Governmental Relations Officer

Special Projects Coordinator





**ACE
Planning**



**Planning and
Research**



Environmental



**Consultant
Contracts**



**Chief Engineer
Preconstruction**



**ACE
Program Delivery**



**Alternative
Delivery**



Local Programs



**Program
Management**



ACE Design



Bridge



Right of Way



Roadway Design



State Aid



Surveys

Citizens of Arkansas

Governor & Legislature

Internal Audit

Highway Commission

Director

Chief Engineer - Preconstruction

Asst. Chief Engineer Planning

Planning & Research

Environmental

Consultant Contracts

Asst. Chief Engineer Program Delivery

Alternative Delivery

Local Programs

Program Management

Asst. Chief Engineer Design

Bridge

Right of Way

Roadway Design

State Aid

Surveys

Chief Engineer - Operations

Asst. Chief Engineer Construction

10 Districts

Construction

Materials

Asst. Chief Engineer Maintenance

Maintenance

Bridge Operations

Transportation Systems Management & Operations

Chief - Administration

Asst. Chief Administration

Human Resources

Benefits and Compensation

Information Technology

Equipment & Procurement

Fiscal Services

Civil Rights

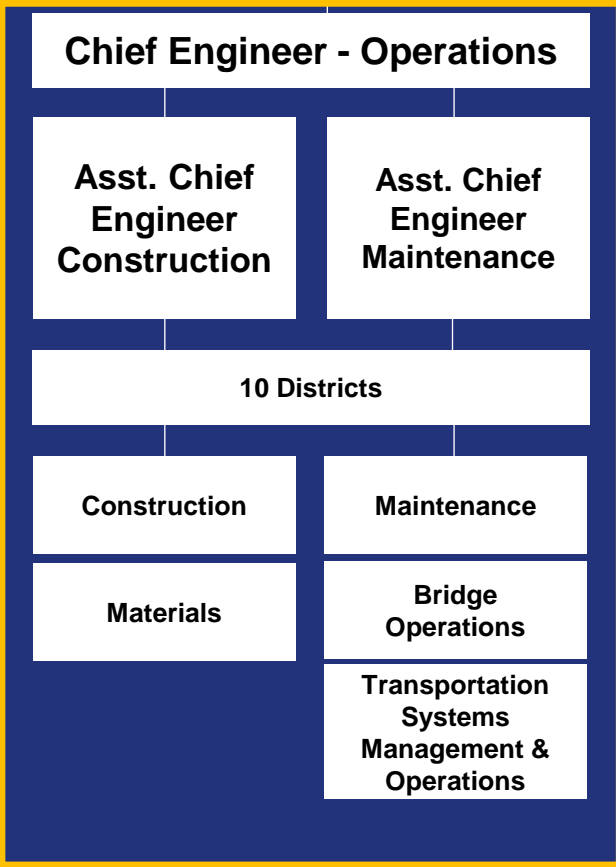
Communications

Highway Police

Legal

Governmental Relations Officer

Special Projects Coordinator





**Chief Engineer
Operations**



**ACE
Construction**



**ACE
Maintenance**



Bridge Ops



Maintenance



TSMO



Construction



Materials



District 1

District 2

District 3

District 4

District 5

District 6

District 7

District 8

District 9

District 10

Citizens of Arkansas

Governor & Legislature

Internal Audit

Highway Commission

Director

Chief Engineer - Preconstruction

Chief Engineer - Operations

Chief - Administration

Asst. Chief Engineer Planning

Asst. Chief Engineer Program Delivery

Asst. Chief Engineer Design

Asst. Chief Engineer Construction

Asst. Chief Engineer Maintenance

Asst. Chief Administration

Planning & Research

Alternative Delivery

Bridge

10 Districts

Human Resources

Communications

Environmental

Local Programs

Right of Way

Construction

Maintenance

Benefits and Compensation

Highway Police

Consultant Contracts

Program Management

Roadway Design

Materials

Bridge Operations

Information Technology

Legal

State Aid

Transportation Systems Management & Operations

Equipment & Procurement

Governmental Relations Officer

Surveys

Fiscal Services

Special Projects Coordinator

Civil Rights





**Chief
Administration**



**Asst. Chief
Administration**



**Human
Resources**



**Benefits &
Compensation**



**Information
Technology**



**Equipment &
Procurement**



Fiscal Services



Civil Rights



Communications



Highway Police



Legal



**Governmental
Relations Officer**



**Special Projects
Coordinator**



BOOTS ON THE GROUND

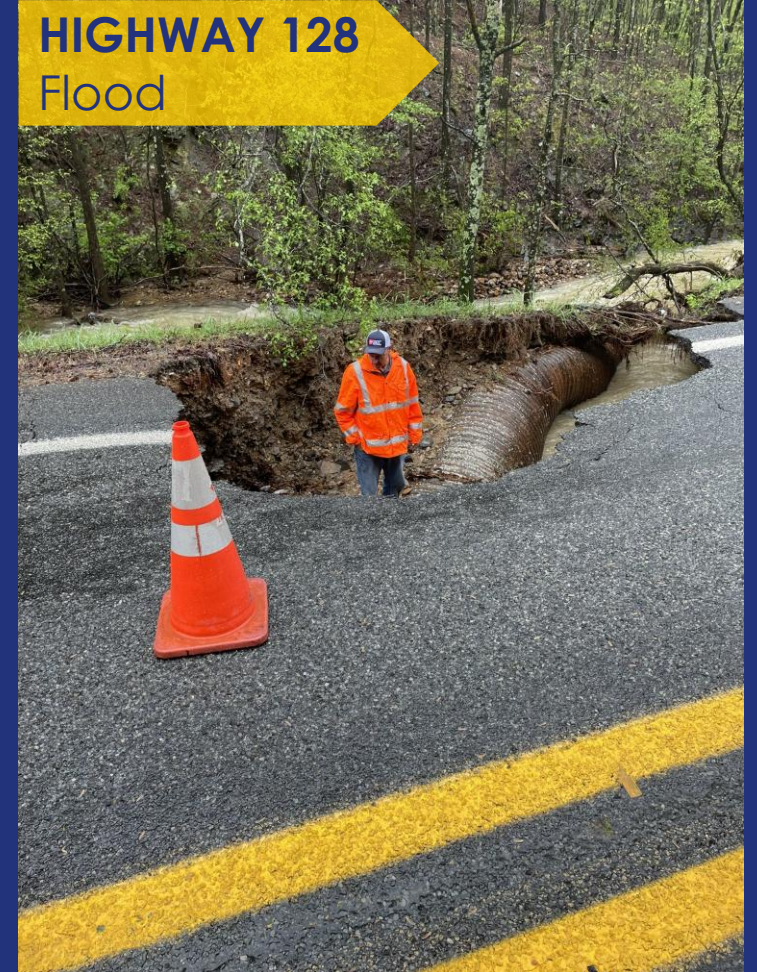
SEBASTIAN CO.
Snow



LAKE CITY
Tornado



HIGHWAY 128
Flood





ARKANSAS HIGHWAY POLICE



30 Crossing



EXCELLENCE



30 CROSSING

LITTLE ROCK & NORTH LITTLE ROCK



HIGHWAY 89

MAYFLOWER BYPASS



HIGHWAY 5

HOT SPRINGS BYPASS



INTERSTATE 40

WEST MEMPHIS TRUCK LOT

Public Meeting



ACCOUNTABILITY



TRAFFIC MANAGEMENT CENTER (TMC)



Managed Lanes



MODERN

MANAGED LANES



- Operational during peak travel times
- Monitored 24/7 by our Traffic Management Center
- Eases congestion and increases safety

ALTERNATIVE DELIVERY METHODS

Design-Build/Progressive Design-Build

Construction Manager-General Contractor

Act 460 of 2003

- Authorized use to D-B and required ARDOT to establish procedures and regulations for qualifications-based selection
- Up to 2 projects, each with a value of \$50M or higher

ALTERNATIVE DELIVERY METHODS

Design-Build/Progressive Design-Build

Construction Manager-General Contractor

Act 460 of 2003

Act 541 of 2013

- Allowed unlimited use of D-B projects when state highway revenues are not required
- Allowed D-B contracts under the Connecting Arkansas Program only (sunset of July 1, 2023)

ALTERNATIVE DELIVERY METHODS

Design-Build/Progressive Design-Build

Act 460 of 2003

Act 541 of 2013

Act 704 of 2015

- Allowed for Design-Build-Finance
- Removed all restriction regarding time and funding; unlimited use

Construction Manager-General Contractor

ALTERNATIVE DELIVERY

METHODS

Design-Build/Progressive Design-Build

Act 460 of 2003

Act 541 of 2013

Act 704 of 2015

Construction Manager-General Contractor

Act 809 of 2017

- 3 projects; sum of construction cost estimates not to exceed \$200M total
- First project construction cost estimate not to exceed \$70M
- Pilot program expires no later than June 30, 2022

ALTERNATIVE DELIVERY

METHODS

Design-Build/Progressive Design-Build

Act 460 of 2003

Act 541 of 2013

Act 704 of 2015

Construction Manager-General Contractor

Act 809 of 2017

Act 1019 of 2019

- 5 projects; sum of construction cost estimates not to exceed \$200M total
- Single project construction cost estimate not to exceed \$100M
- Extends pilot program through June 30, 2024

ALTERNATIVE DELIVERY

METHODS

Design-Build/Progressive Design-Build

Act 460 of 2003

Act 541 of 2013

Act 704 of 2015

Construction Manager-General Contractor

Act 809 of 2017

Act 1019 of 2019

Act 823 of 2023

- Up to 5 additional projects; sum of construction cost estimates not to exceed \$500M
- Single project construction cost estimate not to exceed \$150M
- Extends pilot program through June 30, 2026

ALTERNATIVE DELIVERY METHODS

Design-Build/Progressive Design-Build

Act 460 of 2003

Act 541 of 2013

Act 704 of 2015

Construction Manager-General Contractor

Act 809 of 2017

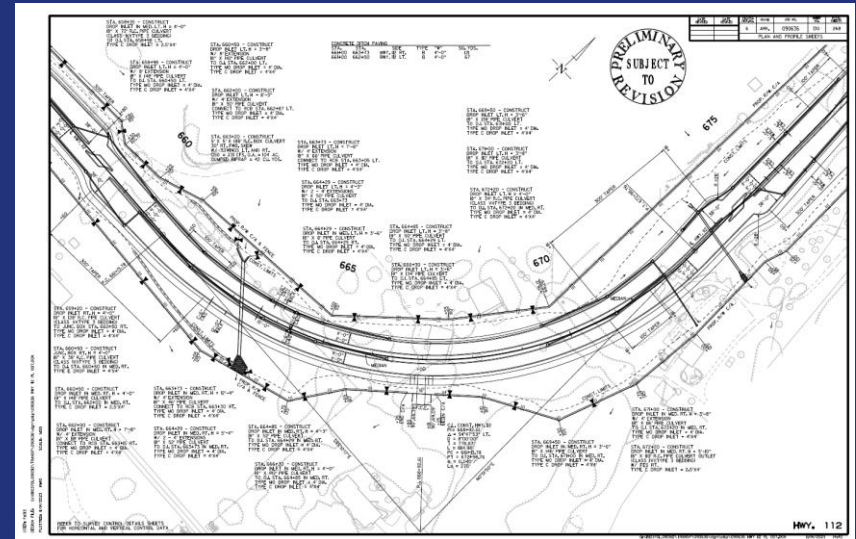
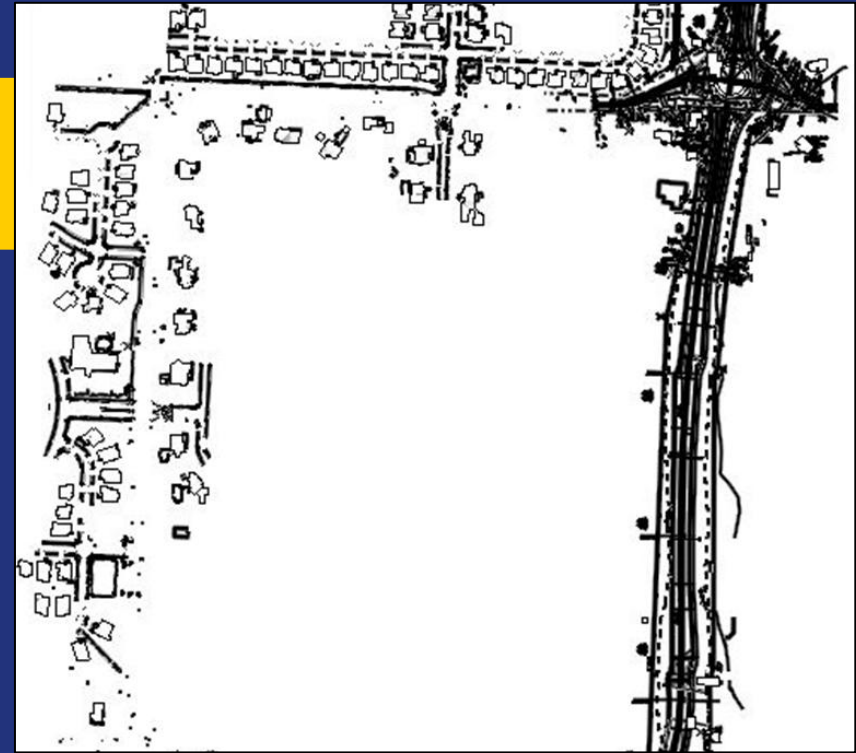
Act 1019 of 2019

Act 823 of 2023

Act 328 of 2025

- Any transportation project; up to \$300 million
- Repeals the previous pilot program limitations and study requirements

3D RENDERING





**AMERICAN COUNCIL OF
ENGINEERING COMPANIES OF AR
ANNUAL AWARDS LUNCHEON**

KELI WYLIE, P.E.
APRIL 22, 2025

