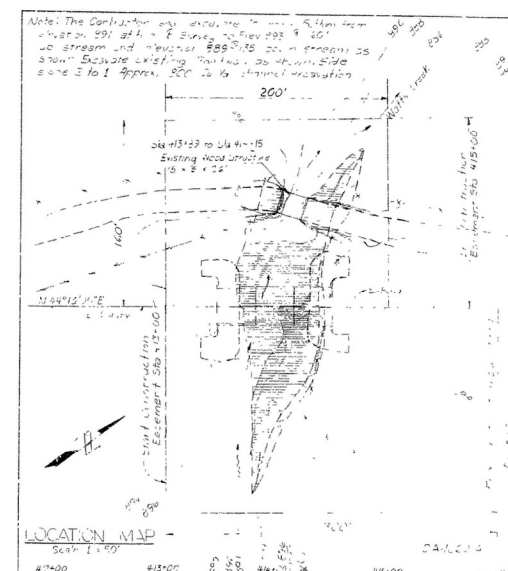
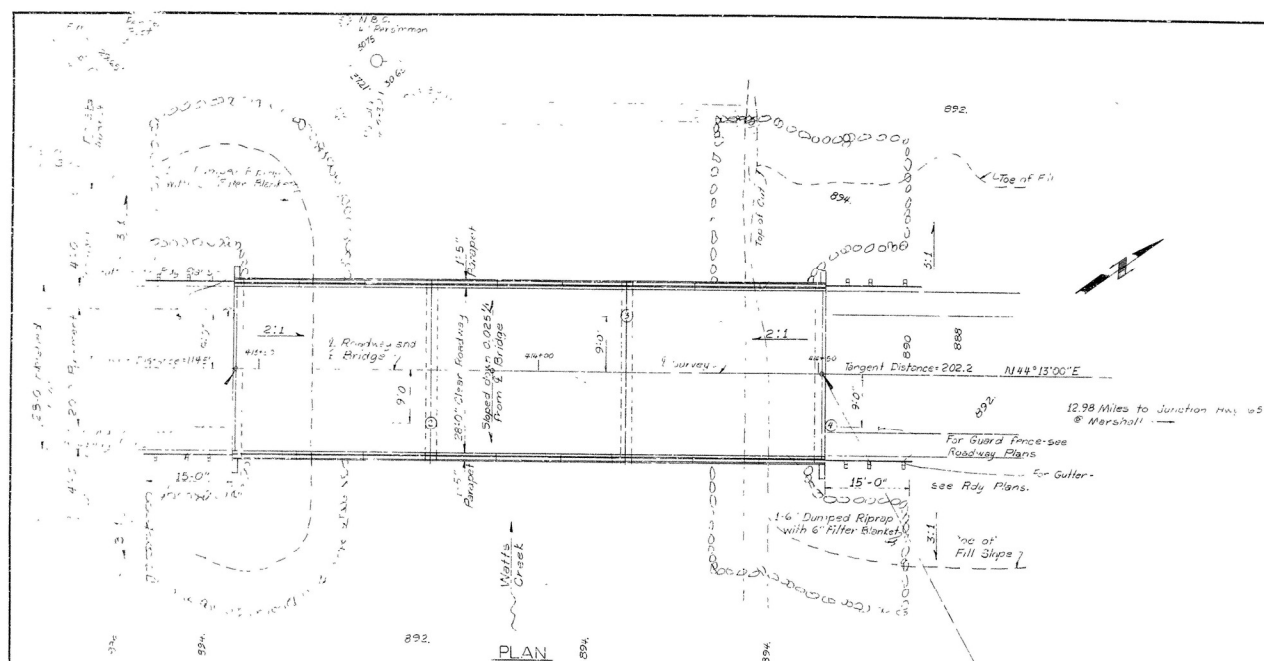


DATE REVISED	DATE FILMED	DATE REVISED	DATE FILMED	FED. ROAD NO.	STATE	FED. AID PRG.	FISCAL YEAR	SHEET NO.	TOTAL SHEETS
8-21-70	NOV			6	ARK.	S			
8-26-70	NOV 8-27-70			JOB NO.	9-20		02	11	



GENERAL NOTES
ALL CONCRETE TO BE CLASS 5 POURED IN THE DRY. EXPOSED CORNERS TO BE CHAMFERED 3/4" UNLESS OTHERWISE NOTED.

ROCK EXCAVATIONS SHALL BE MADE A MINIMUM OF ONE FOOT INTO MATERIAL DESIGNATED AS VERY HARD BLUE SHALE TO NEAT LINES OF CONCRETE FOOTINGS. CARE SHALL BE EXERCISED TO AVOID SPATTERING OF ROCK FRACES BY EXCESSIVE BLASTING. CONCRETE IN FOOTING SHALL BE POURED DIRECTLY AGAINST EXCAVATED SURFACES OF ROCK.

IN GENERAL, ALL CONSTRUCTION JOINTS IN BENTS OR PIERS SHALL BE HORIZONTAL AND SHALL BE PROVIDED WITH KEYS NOT LESS THAN 1 1/2" HIGH COVERING THE MIDDLE THIRD OF BOTH DIMENSIONS.

7 THE CONTRACTOR SHALL USE THE EXISTING WOOD STRUCTURE FOR A DETOUR BRIDGE. AFTER CONSTRUCTION OF NEW BRIDGE THE STATE SHALL REMOVE THE EX-SISTING BRIDGE NO. M-363 BEGINNING AT STATION 412 + 99 AND ENDING AT STATION 414 + 15 ACCORDING TO SECTION 1006 OF THE SPECIFICATIONS. THE EXISTING BRIDGE IS 26' LONG, 18' CLEAR ROADWAY WOOD DECK, ROCK ABUTMENTS, AND 1 CENTER BENT.

FOR DETAILS OF END BENTS SEE DRAWING NO. 1627.
FOR DETAILS OF INTERMEDIATE BENTS SEE DRAWING NO. 16279.
FOR DETAILS OF 35' R.C. SLAB SPANS SEE DRAWING NO. 14940 AND 14941.

SPECIFICATIONS: ARKANSAS STATE HIGHWAY COMMISSION STANDARD SPECIFICATIONS FOR HIGHWAY CONSTRUCTION, EDITION OF 1959, THE 1966 SUPPLEMENTAL SPECIFICATIONS, AND DESIGNATED SPECIAL PROVISIONS.

DESIGN SPECIFICATIONS: AASHTO 1969
LIVE LOADING: H20
UNIT STRESSES: CLASS 5 CONCRETE (N=10) 1,200 PSI
REINFORCING STEEL 20,000 PSI

20,600 PSI

LAYOUT OF
BRIDGE OVER WATTS CREEK
IMO - NORTH
SEARCY COUNTY
ROUTE 27 SEC. 16
ARKANSAS STATE HIGHWAY COMMISSION
LITTLE ROCK, ARK.

DRAWN BY: D.H. DATE: 3-24-70
 TRACED BY: D.H. DATE: 3-24-70 SCALE: 1" = 10'-0"
 CHECKED BY: P.H.S. DATE: 4-28-70

BRIDGE NO. 5367 DRAWING NO. 16876

