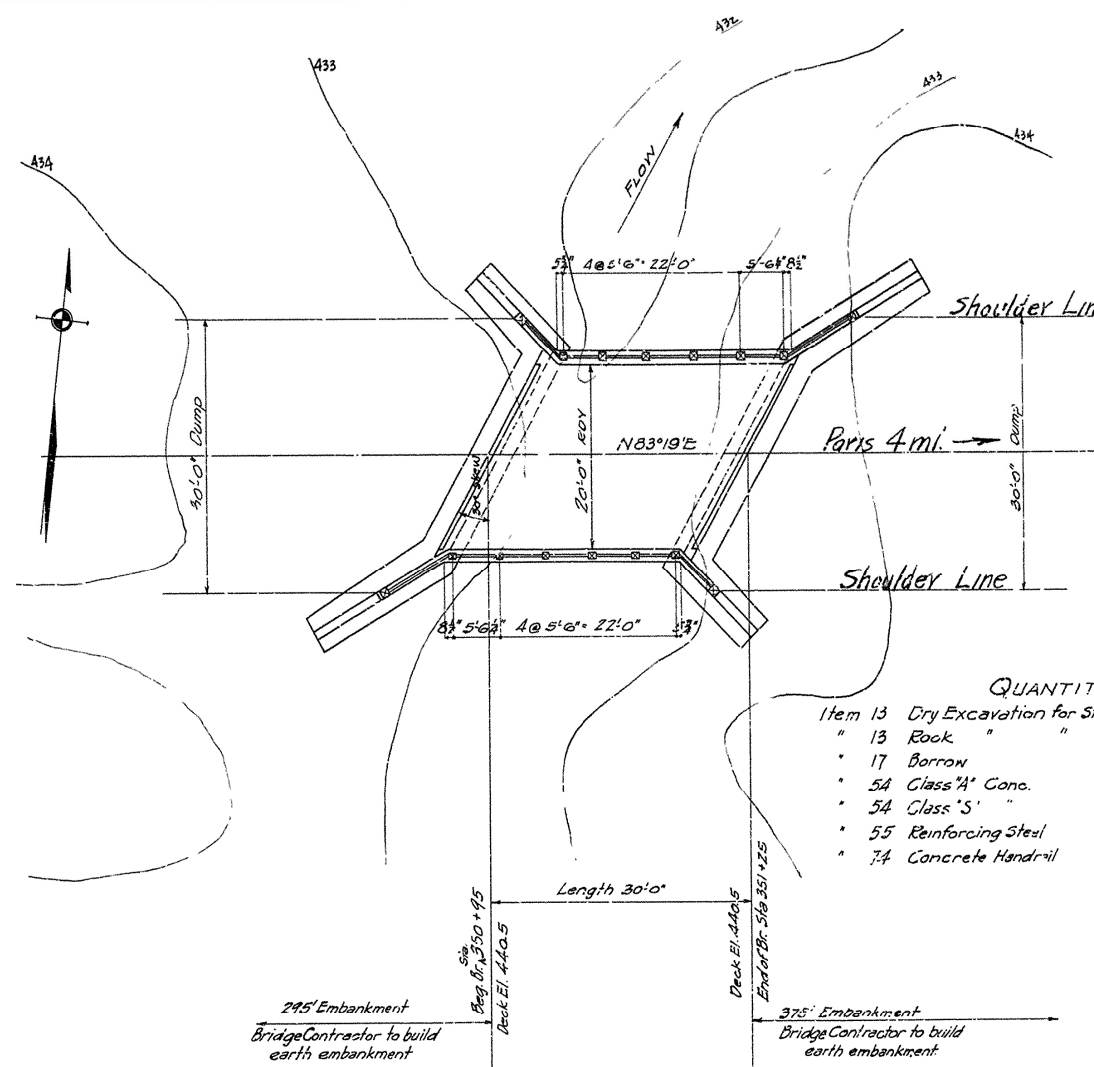
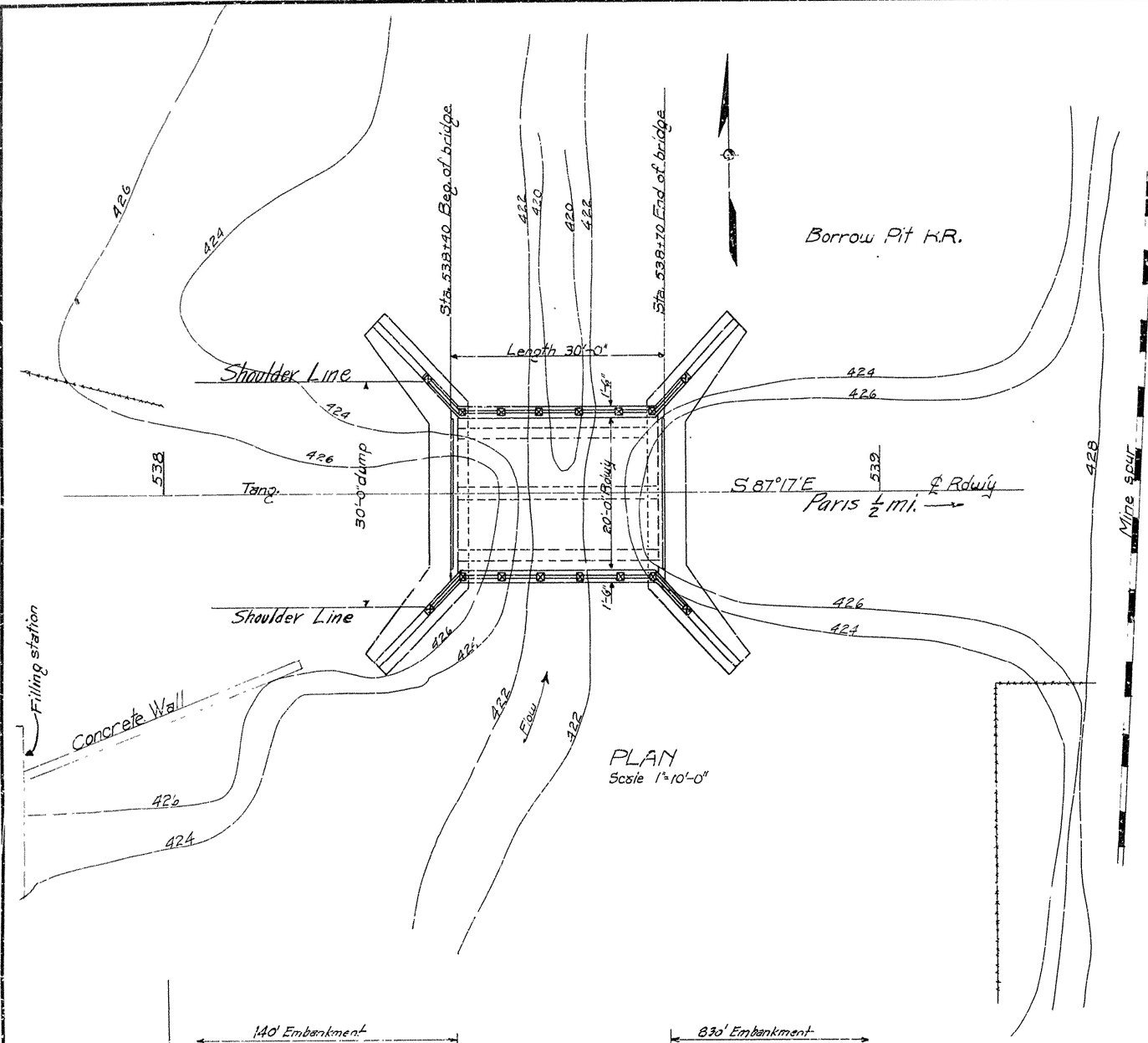
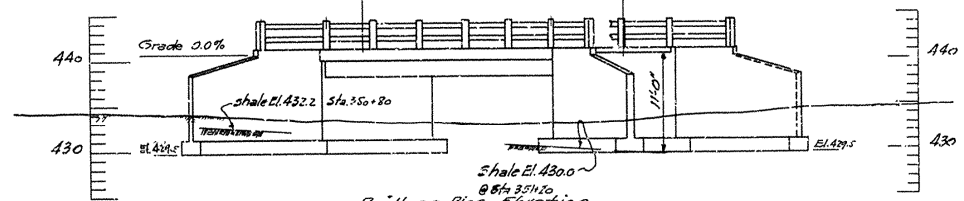
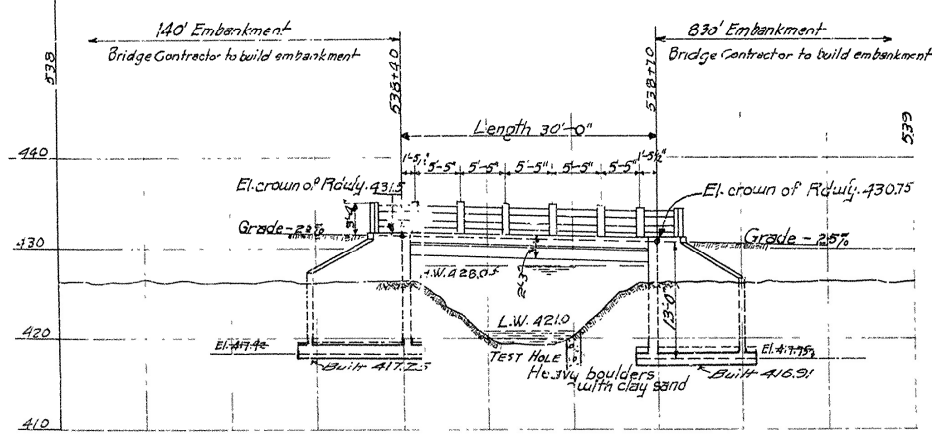


FISCAL YEAR	Job No.	SHEET No.	TOTAL SHEETS
1928	865	2	21



QUANTITIES

Item 13	Dry Excavation for Structures	63	Cu. Yds.
" 13	Rock "	27	" "
" 17	Borrow	4800	" "
" 54	Class "A" Conc.	60.1	" "
" 54	Class "S" "	77.2	" "
" 55	Reinforcing Steel	11306	lbs.
" 74	Concrete Handrail	80	lin. ft.



QUANTITIES

Item 13	Dry Excavation for Struct	104	cu. yds.
" 13	Wet "	157	" "
" 13	Rock "	10	" "
" 17	Borrow	10900	" "
" 54	Class "A" Conc.	69.4	" "
" 54	Class "S" "	26.9	" "
" 55	Reinforcing Steel	12050	lbs.
" 74	Concrete Railing	81	lin. ft.

B.M. 427.30 On concrete curb marked (x) at filling station 53+85
D.A. 2 59. mi.

ELEVATION
scale 1"=10'-0"
Dr. No. 381

For Details see Drwg. No. 1002 & 983

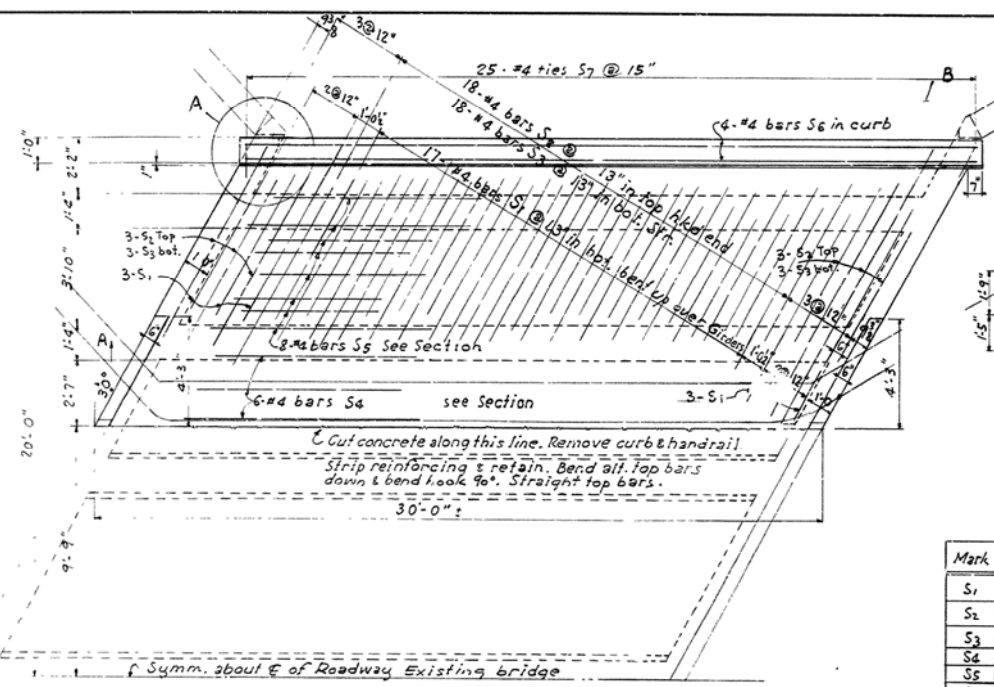
Br. No. 378
Scale 1"=10'
For Details see Drwg. Nos. 1021 & 982

LAYOUT OF BRIDGES
AT STA. 350+95 AND 538+10
LOGAN COUNTY

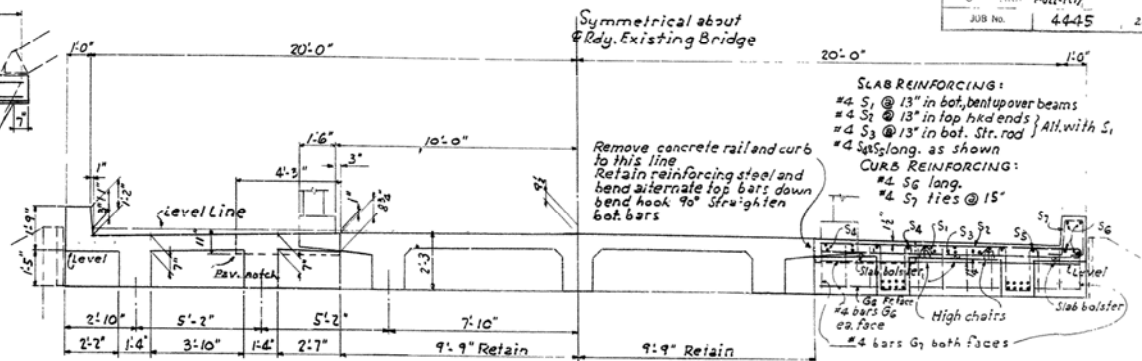
ROUTE 22 SEC. 3
ARKANSAS STATE HIGHWAY DEPARTMENT
LITTLE ROCK, ARK.

Drawn By: L.A.H. Date: _____
Traced By: F.R.B. Date: _____
Checked By: _____ Date: _____
Scale: 1 in. = 10 ft.
BRIDGE NO. 378-381 DRAWING NO. 981

BRIDGE ENGINEER



HALF PLAN SHOWING WIDENING



HALF SECTION SHOWING DIMENSIONS

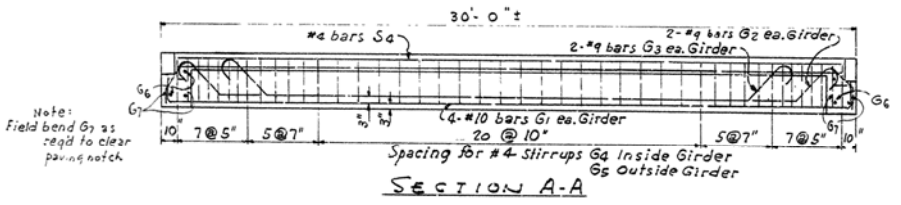
HALF SECTION SHOWING REINFORCING

LIST OF REINFORCING STEEL

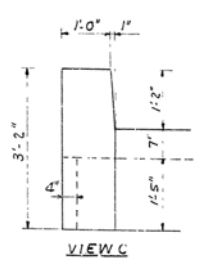
Mark	Size	No.	Length	Bending	Diagram
S1	#4	46	13-5	See Diagram	
S2	#4	48	13-2	Diagram	
S3	#4	48	12-8	STR.	
S4	#4	12	28-3	STR.	
S5	#4	16	29-6	STR.	
S6	#4	8	30-0	STR.	
S7	#4	50	5-9	STR.	
G1	#10	16	32-7	See Diagram	
G2	#9	8	31-7	Diagram	
G3	#9	8	27-8	Diagram	
G4	#4	90	5-8	STR.	
G5	#4	90	5-6	STR.	
G6	#4	12	12-8	STR.	
G7	#4	40	1-9	STR.	

Dimensions are to centers of bars.

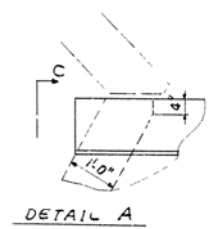
GENERAL NOTES:
All concrete to be Class 'S'. All exposed corners to have 3/4" chamfer unless otherwise noted.
Reinforcing steel to be deformed bars of intermediate grade unless modified by special provision. Shop lists and bending diagrams must be submitted and approved before fabrication is begun. All reinforcing steel to be accurately located in the forms and firmly held in place by means of steel wire supports sufficient in size and number to prevent displacement during the course of construction. Wire supports will not be paid for directly but will be considered subsidiary to the item of "Reinforcing Steel". Shop lists must be submitted for approval.
Removal of concrete railing, curbs and portions of slab of existing structure preparatory to widening shall be paid for under the item "Remodeling Existing Bridges". Care shall be exercised to prevent damage to the portions of the structure to remain in place.
SPECIFICATIONS: Arkansas State Highway Commission Standard Specifications for Road and Bridge Construction adopted March 1 1940.



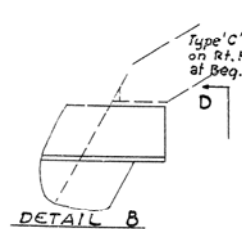
SECTION A-A



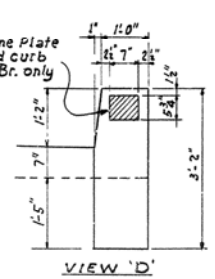
VIEW C



DETAIL A



DETAIL B



VIEW D

Scale = 3/4" = 1'-0"

DETAILS OF
30'-0" RCDG SPAN, 30° SKEW LT. FWD.
BRIDGE OVER GACK CREEK
FRANKLIN & LOGAN COUNTIES BRIDGE WIDENING
LOGAN COUNTY
ROUTE 22 SEC. 3

ARKANSAS STATE HIGHWAY COMMISSION
LITTLE ROCK, ARK.

DRAWN BY: E.A.W. DATE: 11-20-56
TRACED BY: E.P.F. DATE: 1-7-57
BRIDGE NO. 378-A
DRAWING NO. 9321

L.D. Carlson
BRIDGE DESIGN ENGINEER