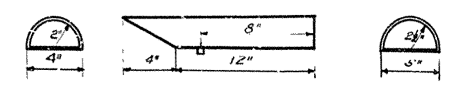


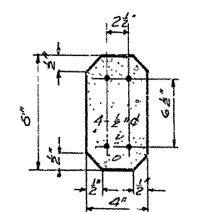
| | | | |
|-------------|--|-----------|--------------|
| FISCAL YEAR | | SHEET NO. | TOTAL SHEETS |
| | | | |

NOTES

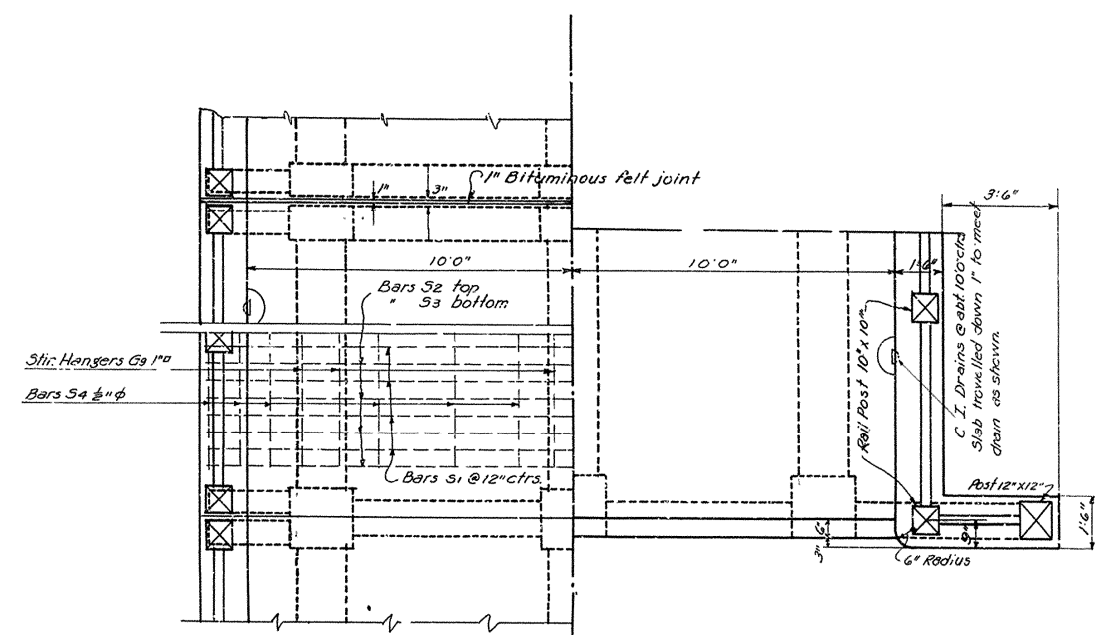
All exposed corners to have 3/4" chamfer unless otherwise noted.
Handrail to be 1-3 m's, max. egg. 4" Rails precast. Posts to be class 3.
Supports up to construction joint shown, class 4. Concrete above this point to be class 5.
All concrete to be poured in dry.
Reinforcing steel to be deformed bars of Structural or Intermediate grade. Shop lists and bending diagrams to be submitted by contractor before fabrication is begun. C.I. drains to be paid for as reinforcing steel.
Specification, Arkansas Standard Road and Bridge Specifications, adopted May 30th, 1921.



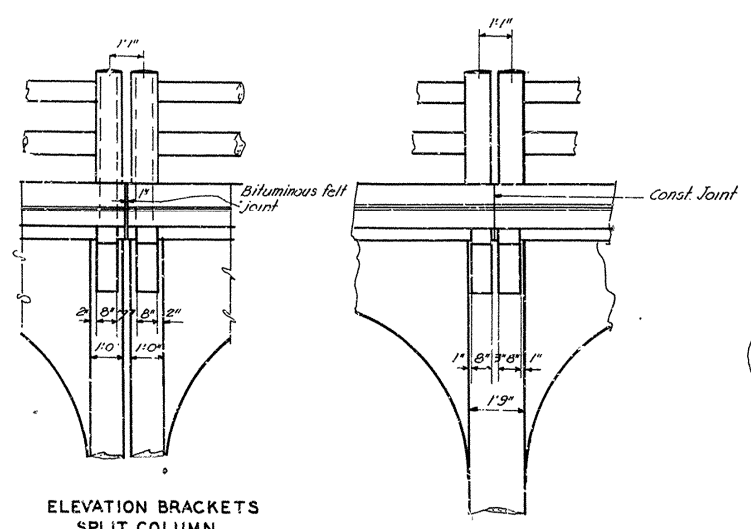
DETAILS CAST IRON DRAIN



SECTION THRU RAIL

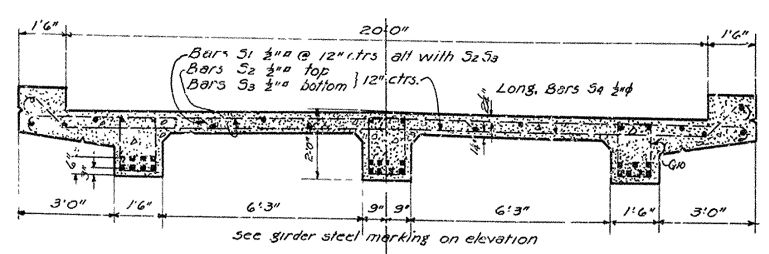


TYPICAL PLAN DETAILS



ELEVATION BRACKETS SPLIT COLUMN

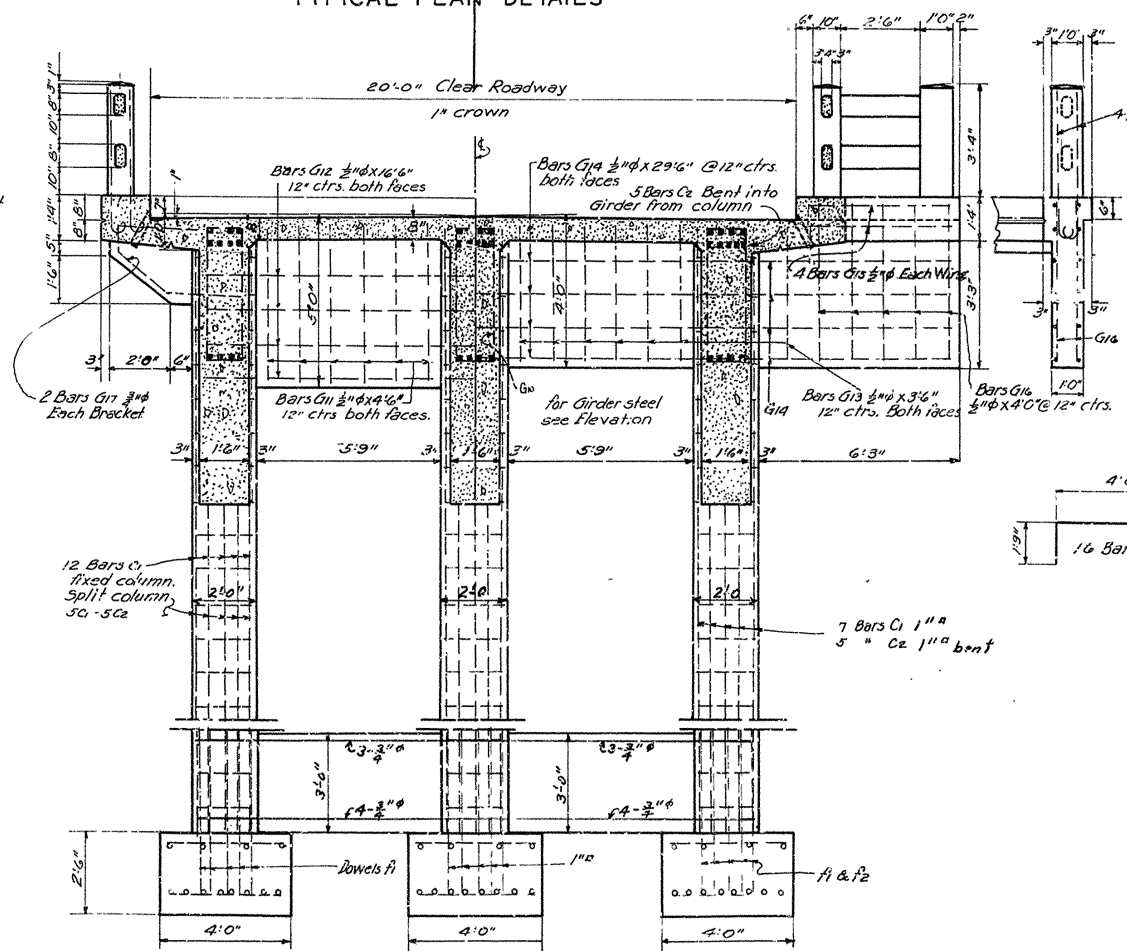
ELEVATION BRACKETS INTERMEDIATE COL.



HALF SECTIONS

END SPAN

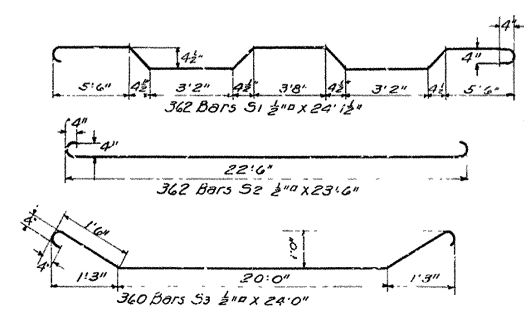
INTERMEDIATE SPAN



HALF ELEVATIONS

INTERMEDIATE BENT

END BENT



BENDING DETAILS

DETAILS

RELIEF OPENING

SIX MILE CREEK - LOGAN COUNTY

ROUTE 22 SEC.

ARKANSAS STATE HIGHWAY DEPARTMENT
LITTLE ROCK, ARK.

Drawn By: *ACK* Date: *5-2-22*
Traced By: *ACK* Date: *5-2-22*
Checked By: _____ Date: _____

Scale: 3/8" = 1'

BRIDGE NO. 355

DRAWING NO. 823

N.B. Lawler
BRIDGE ENGINEER

QUANTITIES

NOTES:

30'0" Dump

20'-0"

20'-0" R/W

Rip Rap 1'-0" Thick Carried 1'-0" above high water.

400
395
335

SIX MILE CREEK

N

405
400
400
405
405

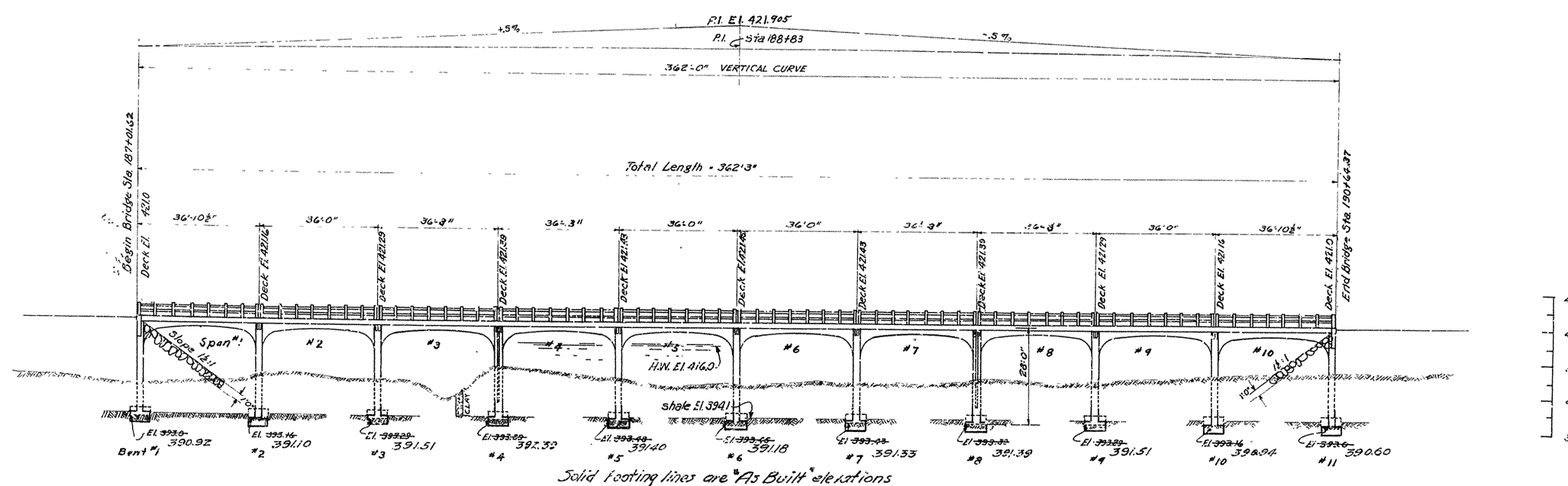
No 80'25 E

20'-0"

Paris to Mi

PLAN

PLAN



ELEVATION

ROUTE 22-SECTION 3
ARKANSAS STATE HIGHWAY DEPARTMENT
LITTLE ROCK, ARK.

Drawn By Beck - May 1
Traced By Beck "
Checked By
BRIDGE NO. 355

SCALE 1" = 20' 0"

DRAWING NO. 8.

N.B. Garner
Bridge Eng.