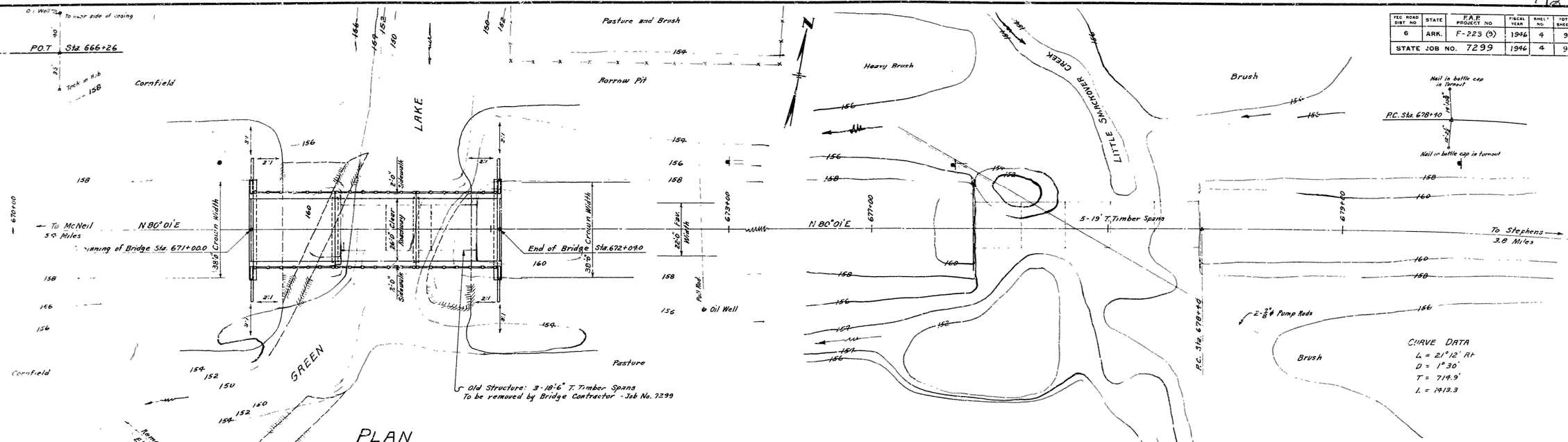


FEED NO.	STATE	PROJECT NO.	FISCAL YEAR	DATE	TOTAL SHEETS
6	ARK.	F-223 (5)	1946	4	9
STATE JOB NO. 7299					
1946 4 9					



PLAN

PLAN

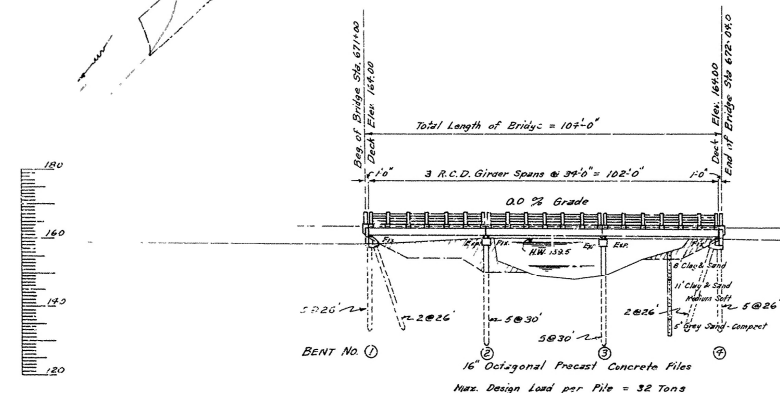
Channel to be improved as shown to 600 Cu.Yds. with 2:1 side slopes.  
220 Cu.Yds. embankment to be removed under new bridge to Elev. 155.0  
Channel improvement to be made by Road Contractor under Job No. 7266.

GENERAL NOTES

All concrete to be Class "C". All exposed corners to be chamfered  $\frac{3}{8}$ " unless otherwise noted.  
Expansion joints to be constructed as shown on layout.  
Lengths of piling shown are for estimating quantities only. Actual lengths to be determined in the field.  
Volume occupied by embedded pile heads will not be included in pay quantity of concrete caps.  
Precast concrete piling to be Class "S" Concrete and shall be driven to a minimum capacity of 32 tons each and to a minimum penetration of 20 feet.  
For details of superstructure see Drawing No. 5705.  
For details of Bents see Drawing No. 5406-A.  
SPECIFICATIONS: Arkansas State Highway Commission Standard Specifications for Road and Bridge Construction, adopted March 1, 1940

QUANTITIES

ITEM NO.	ITEM	QUANTITY	UNIT
103	Dry Excavation for Structures	40	Cu.Yd.
S.R. 4-1	Class "S" Concrete for Bridges	174.9	Cu.Yd.
S.R. 1-1	Reinforcing Steel	40930	Lb.
804	16" Octagonal Concrete Piling	668	Lin.Ft.
805	Concrete Nailing	222	Lin.Ft.
S.R. 607	Metal Bearing and Roadway Expansion Devices	7440	Lb.
929	Bridge Name Plates (Type "B")	1	Each
S.M.	Removal of Existing Bridge Structures and Maintaining Traffic	4.0%	Complete Item

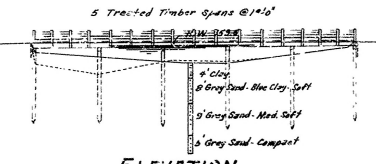
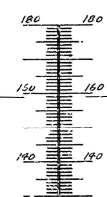


ELEVATION  
BRIDGE NO. 826-A

Drainage Area 9.0 Square Miles  
C=67 960 Sq.Ft. Opening Req'd.  
B.M. Elev. 160.86  
Top of Salt on S.W. End of Bridge. Sta. 671+36

DESIGN LIVE LOAD = H-20 A.R.S.H.O. 1941  
STRESSES: Concrete (C-10) 1000 %  
Reinforcing Steel 18000 %  
Structural Steel 18000 %

PILING NOTE: Cast one pile 30' long and drive in Bent No. 1 as a test pile.



ELEVATION  
BRIDGE NO. 827

NOTE: The old bridge is to be removed and a culvert built in this location by the Road Contractor under Job No. 7266.

LAYOUT OF BRIDGES OVER  
GREEN LAKE & LITTLE SMACKOVER CREEK  
MCNEIL - STEPHENS ROAD  
OUACHITA COUNTY  
ROUTE 79 SEC. 3

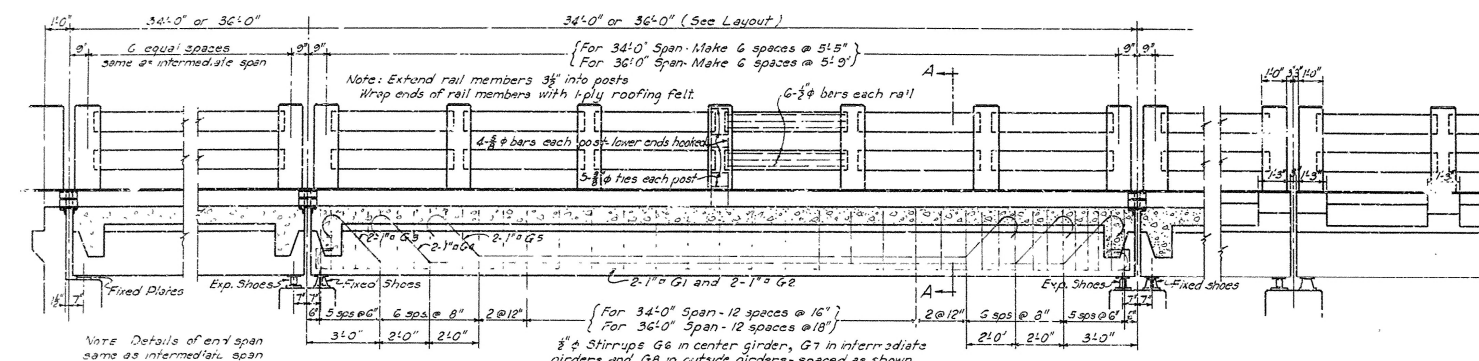
ARKANSAS STATE HIGHWAY COMMISSION  
LITTLE ROCK, ARK.

Drawn By: W.C.H. Date: 2-22-45  
Traced By: W.C.H. Date: 11-16-49  
Checked By: \_\_\_\_\_ Date: \_\_\_\_\_  
Scale: 1 in. = 20 ft.  
BRIDGES NO. 826-A & 827 DRAWING NO. 6527-A

Principal Highway Engineer (Bridges)

ROAD NO.	STATE	PROJECT NO.	FISCAL YEAR	SHEET NO.	TOTAL SHEETS
6	ARK.				
STATE JOB NO. 7299					

Reinforcing Steel Note: All reinforcing steel shall be accurately located in the forms and firmly held in place during construction by means of steel wire supports. Wire supports will not be paid for directly but will be considered subsidiary to the item of Reinforcing Steel.



RAIL SECTION  
Scale: 1/2" = 1'-0"

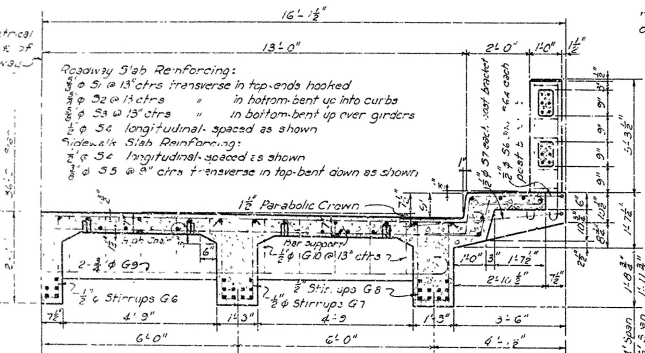
END SPAN

INTERMEDIATE SPAN

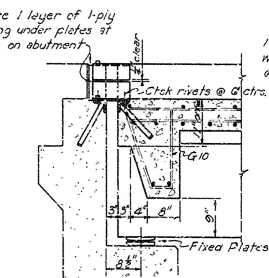
LONGITUDINAL SECTION

PART SIDE ELEVATION

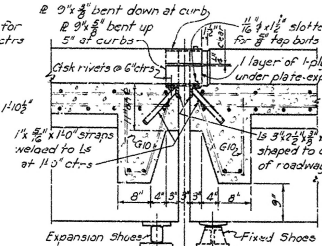
BAR LIST PER SPAN									
Mark	Size	Length	No. Required	A	B	C	D	Bending Diagram	
G1	1 1/2"	36'-6"	10	33'-5"					
G2	1 1/2"	36'-6"	10	33'-5"					
G3	1 1/2"	35'-8"	10	33'-3"	8"				
G4	1 1/2"	35'-8"	10	33'-3"	8"				
G5	1 1/2"	35'-8"	10	33'-3"	8"				
G6	1 1/2"	35'-8"	10	33'-3"	8"				
G7	1 1/2"	35'-8"	10	33'-3"	8"				
G8	1 1/2"	35'-8"	10	33'-3"	8"				
G9	1 1/2"	35'-8"	10	33'-3"	8"				
G10	1 1/2"	35'-8"	10	33'-3"	8"				



HALF CROSS SECTION A-A  
Scale: 3/4" = 1'-0"



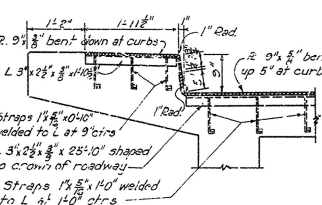
SECTION THRU SIDEWALK  
AT EXPANSION JOINTS  
Scale: 3/4" = 1'-0"



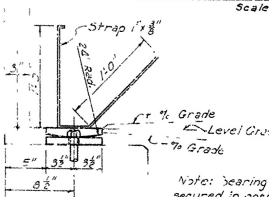
EXPANSION DETAILS AT PIERS  
Scale: 3/4" = 1'-0"

EXP DETAILS AT ABUTS.  
Scale: 3/4" = 1'-0"

DETAILS OF GIRDER STEEL  
AT MIDSPAN  
Scale: 1/4" = 1'-0"

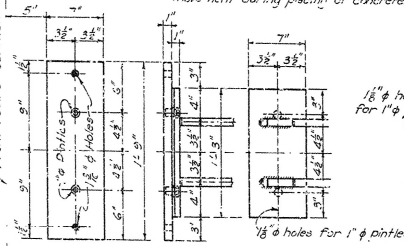


SECTION THRU  
RDY & SIDEWALK EXP DEVICES  
Scale: 3/4" = 1'-0"

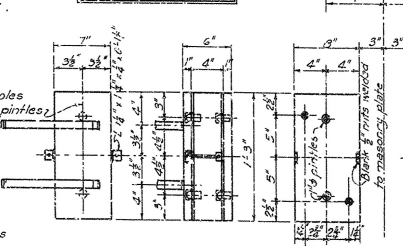


DETAIL OF PINTLE  
Scale: 3/4" = 1'-0"

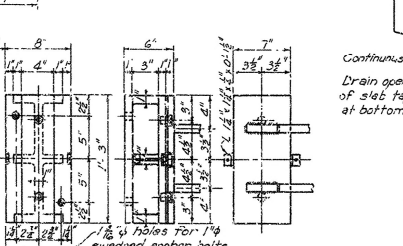
DETAIL OF ANCHOR BOLT  
Scale: 3/4" = 1'-0"



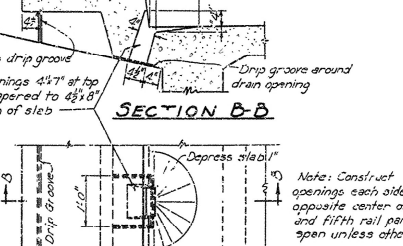
TOP VIEW OF MASONRY PLATE  
Scale: 1/2" = 1'-0"



SIDE VIEW OF TOP PLATE  
Scale: 1/2" = 1'-0"



TOP VIEW OF MASONRY PLATE  
Scale: 1/2" = 1'-0"



DETAILS OF EXPANSION SHOES  
Scale: 1/2" = 1'-0"

GENERAL NOTES  
All concrete to be Class "S". All exposed corners to be chamfered 3/8" unless otherwise noted. Reinforcing steel to be deformed bars of structural or intermediate grade. All dimensions relative to reinforcing steel are to centers of bars. Shop lists and bending diagrams must be submitted by the Contractor and approved before fabrication is begun. Roadway expansion and bearing devices will be paid for at the unit price bid for Metal Bearing and Roadway Expansion Devices. Shop drawings of shoes and expansion devices shall be made in compliance with specifications and shall be submitted and approved before fabrication is begun. All weld connections to be 3/4" fillet welds, unless otherwise noted. Masonry plates shall be finally seated on three layers of burlap saturated with red lead. This work and material to be included in the price bid for Metal Bearing and Roadway Expansion Devices. Base of fixed shoes and rockers of expansion shoes to be cast of structural steel. All other parts of shoes, bearing plates and expansion devices to be structural steel. Paint: All exposed parts of cast or structural steel shall be given one shop coat of red lead and two coats of white lead. Field paint: First coat, white lead tinted with lamp black; second coat, aluminum paint. Specifications: Arkansas State Highway Commission Standard Specifications for Road and Bridge Construction adopted March 6, 1940. Design Live Load - H-20 Loading - AASHTO 1941. Load Distribution to Girders: Dead Load 915' x 1025' / 111.11 ft. Live Load 1335' x 1425' / 111.11 ft. L-83. Unit Stresses: Class "S" Concrete (n=10) 1000 lbs./sq. in. Reinforcing and Structural Steel 18000 lbs./sq. in.

DETAILS OF STANDARD  
34'-0" & 36'-0" R.C.D. GIRDER SPANS  
26'-0" CLEAR ROADWAY- 2'-0" SIDEWALKS  
5 GIRDER TYPE  
ROUTE SEC.

ARKANSAS STATE HIGHWAY COMMISSION  
LITTLE ROCK, ARK.

Drawn By: H.B. Date: 1-28-44  
Traced By: H.B. Date: 1-28-44  
Checked By: Date:  
BRIDGE NO. 925-A, 26'-0". DRAWING NO. 5405