

| DATE | REVISION | DATE | REVISION | DATE | REVISION | DATE | REVISION | FED. ROAD NO. | STATE | FED. AID PROJ. NO. | SHEET NO. | TOTAL SHEETS |
|------|----------|------|----------|------|----------|------|----------|---------------|--------|--------------------|-----------|--------------|
| | | | | | | | | 3 | ARK. | F-015-1(31) | | |
| | | | | | | | | JOB NO. | | 7892 | 21 | 98 |
| | | | | | | | | 5944 | LAYOUT | 24956 | | |

GENERAL NOTES

BENCH MARK: "X" CUT HUBRAIL, 6' RT. STA. 701+92, ELEV. 280.87.

CONSTRUCTION SPECIFICATIONS: ARKANSAS STATE HIGHWAY COMMISSION STANDARD SPECIFICATIONS FOR HIGHWAY CONSTRUCTION, EDITION OF 1978 AND APPLICABLE SPECIAL PROVISIONS.

DESIGN SPECIFICATIONS: AASHTO STANDARD SPECIFICATIONS FOR HIGHWAY BRIDGES 1977 WITH CURRENT INTERIM SPECIFICATIONS.

LIVE LOADING: HS20

METHOD OF DESIGN: LOAD FACTOR

DETAIL DRAWINGS:

| DETAIL DRAWINGS: | DRAWING NO. |
|---------------------------|-------------|
| BENTS | 24956 |
| SPANS | 24957 |
| EMBANKMENT CONSTRUCTION | 1888A |
| PRECAST CONCRETE PILING | 2383 |
| SOIL BORINGS | 11573 |
| GUARD RAIL CONNECTION | GR-8A |
| TYPE C BRIDGE NAME PLATES | 2389A |
| APPROACH SLABS & GUTTERS | 1898J |
| DUMPED RIPRAP | 1891F |

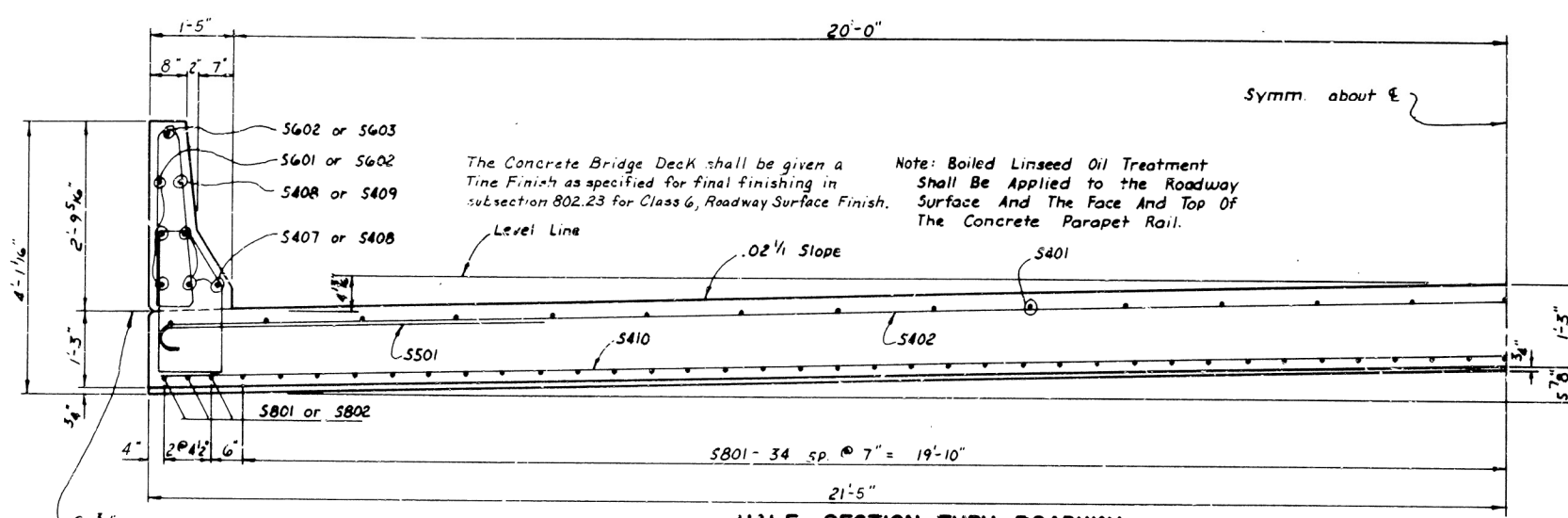
CONCRETE PILING: PILING FOR BENTS 1-7 SHALL BE 16" OCT. GR 16" SQ. PRECAST CONCRETE AND SHALL BE DRIVEN WITH AN APPROVED AIR, STEAM, OR DIESEL HAMMER TO A MINIMUM BEARING CAPACITY OF 44 TONS PER PILE, AND TO A MINIMUM PENETRATION OF 20' BELOW NATURAL GROUND. LENGTHS OF PILING SHOWN ARE ASSUMED FOR ESTIMATING QUANTITIES ONLY. ACTUAL LENGTHS TO BE DETERMINED IN THE FIELD. DRIVE ONE 35" TEST PILE IN BENTS 2 AND 6. PILES IN END BENTS TO BE DRIVEN AFTER EMBANKMENT TO BOTTOM OF CAP IS IN PLACE. PILE SHAPES SHALL NOT BE MIXED ON ANY BRIDGE.

LAYOUT OF BRIDGE OVER
CHAMPAGNOLLE CREEK
OUACHITA CO. LINE - HWY 167
CALHOUN CO.
ROUTE 79 SEC. 5
ARKANSAS STATE HIGHWAY COMMISSION
LITTLE ROCK, ARK.
DRAWN BY: L.M. DATE: 2-24-81
CHECKED BY: D.H.P. DATE: 11-3-81
DESIGNED BY: DATE: 11-3-81
SCALE: 1"=20'
BRIDGE NO. 5944 DRAWING NO. 24956

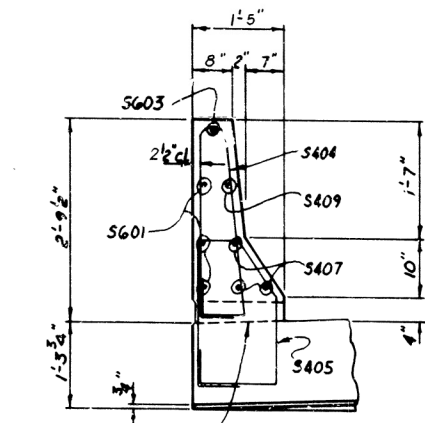
| DATE REVISED | DATE FILED | DATE REVISED | DATE FILED | FED. B.O.B. NO. | STATE | FED. AID PROJ. NO. | SHEET NO. | TOTAL SHEETS |
|-----------------|---------------|-----------------|---------------|--------------------|-------|--------------------|--------------|-----------------|
| | | | | 6 | ARK. | F-015-1(31) | | |
| | | | | JOB NO. | | 7842 | 23 | 98 |

5944

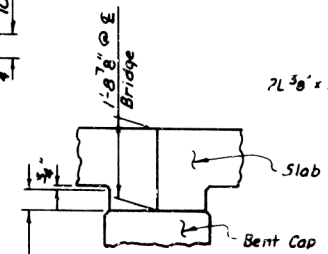
SCAN 24.05.9



HALF - SECTION THRU ROADWAY



SECTION B-B

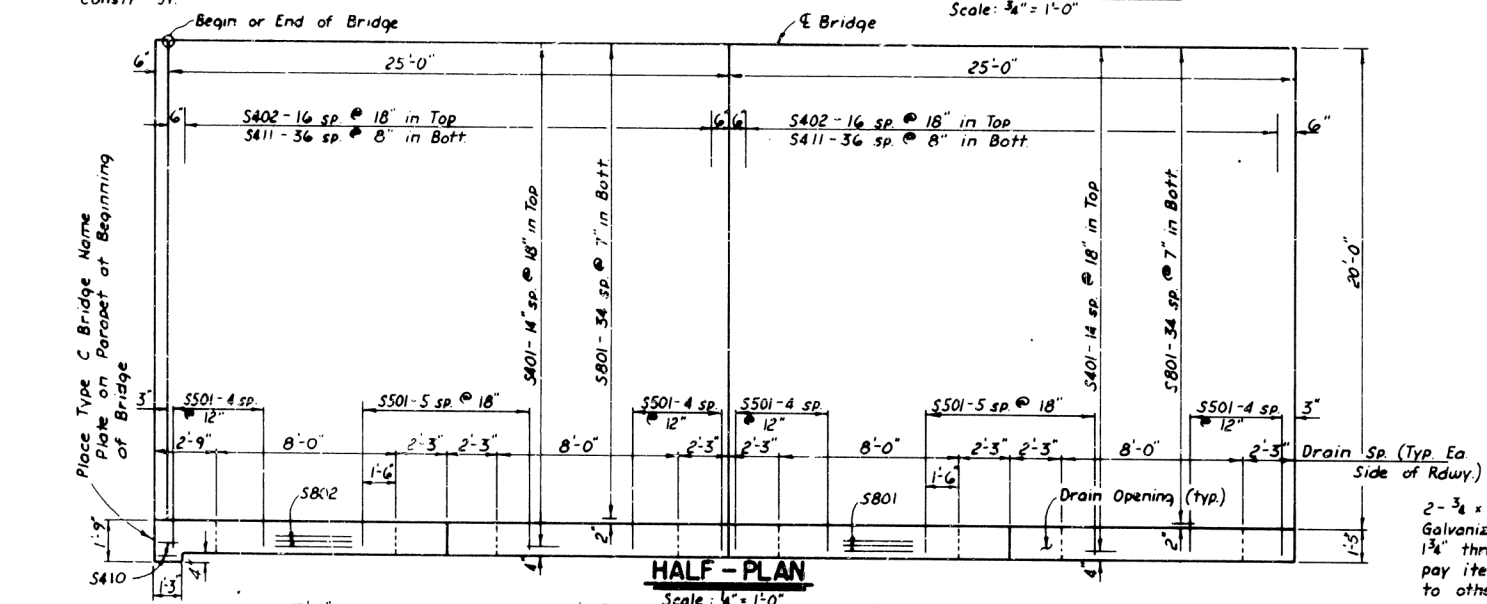


RISER DETAIL

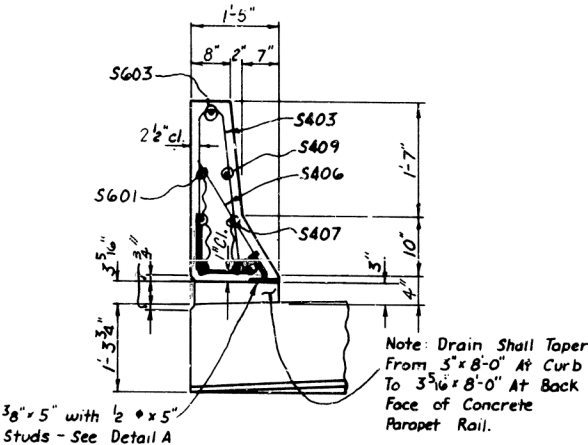
| QUANTITY | END SPAN | INTERIOR SPAN |
|-------------------|----------------|----------------|
| CONCRETE | 55.56 cu. yds. | 55.00 cu. yds. |
| REINFORCING STEEL | 8245 LBS. | 8157 LBS. |
| STRUCTURAL STEEL | 215 LBS. | 215 LBS. |

BAR LIST (EACH SPAN)

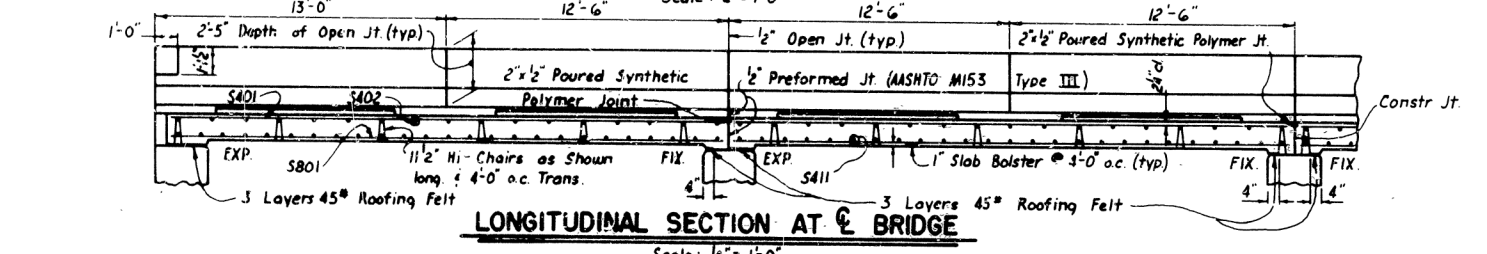
| MARK | REQ'D | | LENGTH | PIN DIA. | | BENDING DIAGRAMS |
|------|-------|------|--------|----------|--|------------------|
| | END | INT. | | | | |
| S401 | 29 | 29 | 24'-8" | Str. | | |
| S402 | 34 | 34 | 22'-6" | 3" | | |
| S403 | 32 | 32 | 6'-4" | 2" | | |
| S404 | 30 | 32 | 6'-10" | 2" | | |
| S405 | 30 | 32 | 7'-0" | 2" | | |
| S406 | 32 | 32 | 3'-2" | 2" | | |
| S407 | 6 | - | 12'-8" | Str. | | |
| S408 | 8 | 16 | 12'-2" | Str. | | |
| S409 | 2 | - | 12'-8" | Str. | | |
| S410 | 10 | - | 11" | Str. | | |
| S411 | 74 | 74 | 22'-0" | Str. | | |
| S501 | 32 | 32 | 6'-7" | 3 3/4" | | |
| S601 | 6 | - | 12'-8" | Str. | | |
| S602 | 8 | 16 | 12'-2" | Str. | | |
| S603 | 2 | - | 11'-8" | Str. | | |
| S604 | 4 | - | 7'-9" | 3 3/4" | | |
| S605 | 6 | - | 4'-5" | 3 3/4" | | |
| S801 | 69 | 75 | 24'-8" | Str. | | |
| S802 | 6 | - | 25'-2" | Str. | | |



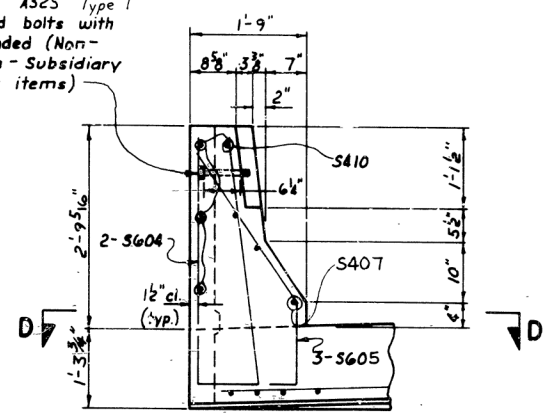
HALF - PLAN



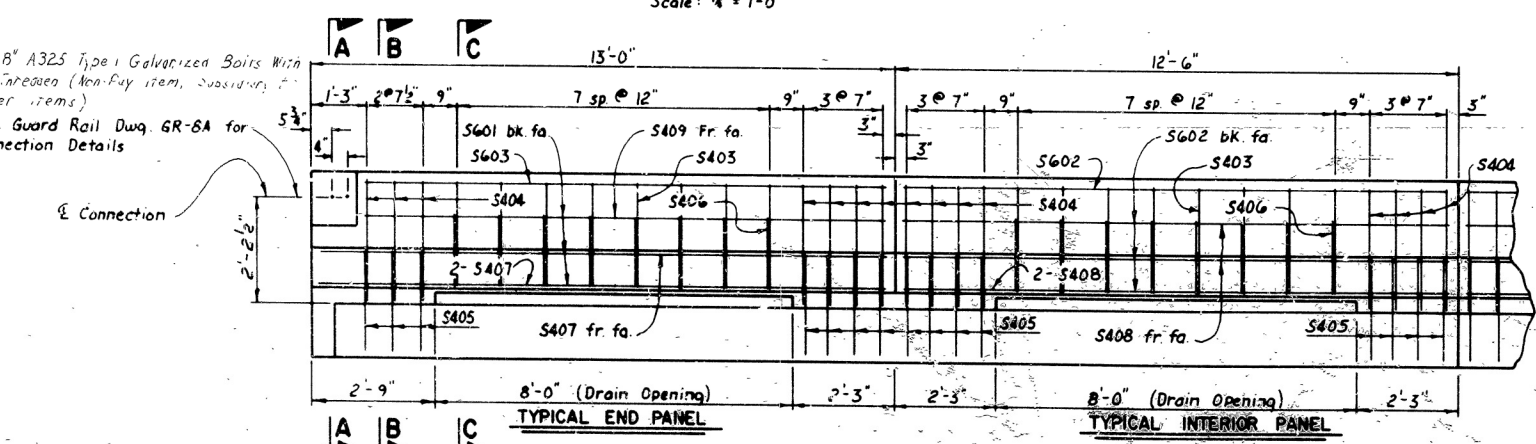
SECTION C-C



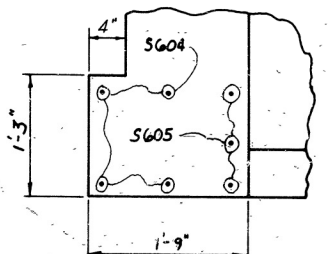
LONGITUDINAL SECTION AT $\frac{1}{2}$ BRIDGE ^{3 Layers}



SECTION A-A



LONGITUDINAL SECTION AT CURB



SECTION D-D

GENERAL NOTES

ALL EXPOSED CORNERS TO BE CHAMFERED 3/4" UNLESS OTHERWISE NOTED.

BAR SUPPORTS FOR REINFORCING BARS WILL NOT BE PAID FOR DIRECTLY, BUT WILL BE CONSIDERED SUBSIDIARY TO THE ITEM "REINFORCING STEEL."

ROOFING FELT, BITUMINOUS FELT, PREFORMED JOINT, AND SYNTHETIC POLYMER SHALL BE MEASURED AND PAID FOR AS CLASS (SAE) CONCRETE.

SPECIFICATIONS: ARKANSAS STATE HIGHWAY COMMISSION STANDARD SPECIFICATIONS FOR HIGHWAY CONSTRUCTION, EDITION OF 1978, AND APPLICABLE SPECIAL PROVISIONS.

DESIGN SPECIFICATIONS: AASHTO STANDARD SPECIFICATIONS FOR HIGHWAY BRIDGES, 1977 EDITION WITH 1978 INTERIM SPECIFICATIONS.

LIVE LOAD: HS20

METHOD OF DESIGN: LOAD FACTOR

LOAD DISTRIBUTION TO SLAB: DEAD LOAD: 227 PSF
LIVE LOAD: 0.184 WHEELS/FT. OF WIDTH PLUS 30% IMPACT

CONCRETE: ALL CONCRETE SHALL BE CLASS (SAE) WITH A MINIMUM 28 DAY COMPRESSIVE STRENGTH $f_c = 3500$ PSI.

REINFORCING STEEL: REINFORCING STEEL SHALL CONFORM TO ASTM A615 OR A617, GRADE 60 (YIELD STRENGTH = 60,000 PSI). SHOP LISTS AND BENDING DIAGRAMS MAY BE SUBMITTED FOR APPROVAL BEFORE FABRICATION IS BEGUN.

DETAILS OF STANDARD

BEGUN.
 DETAILS OF STANDARD
 25'-0" R.C. SLAB SPANS
 CONC. PARAPET RAIL - 40'-0" CL. ROWY.
 ROUTE 79 SEC. 5
 ARKANSAS STATE HIGHWAY COMMISSION