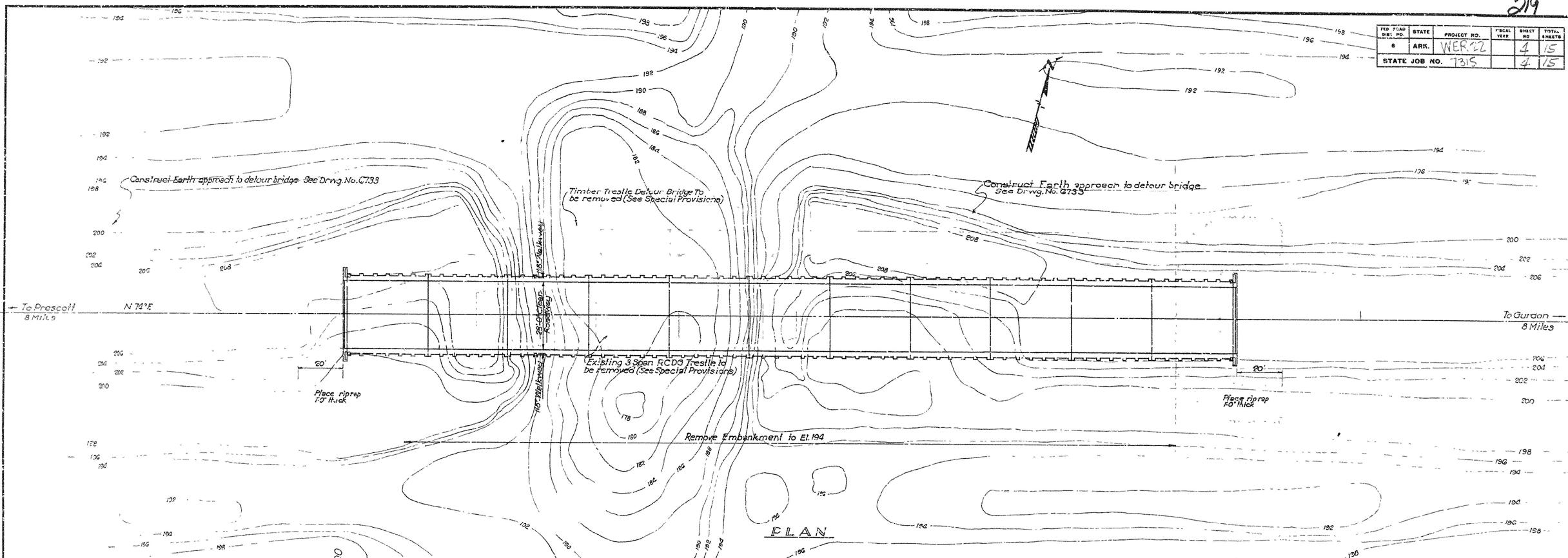
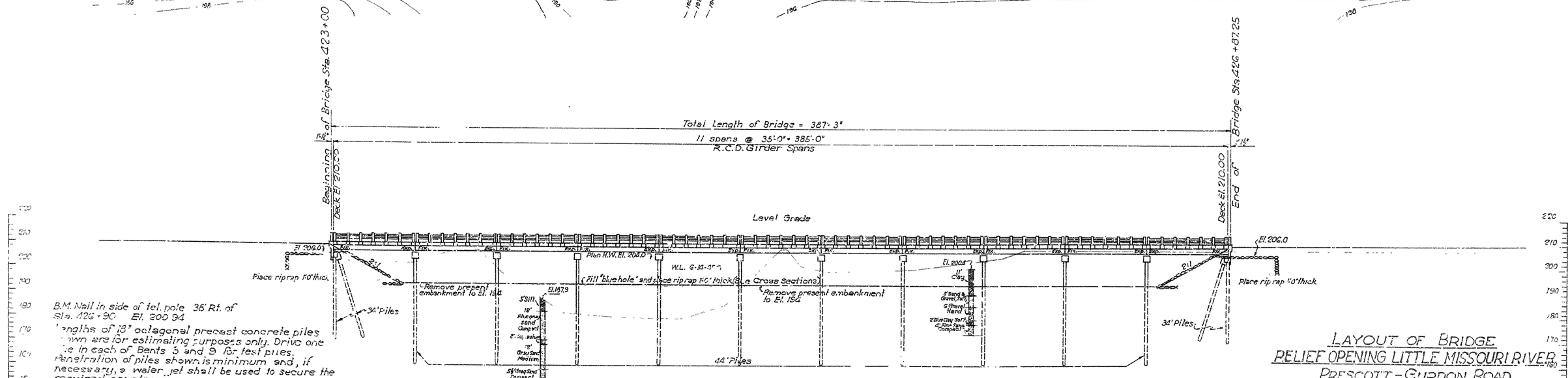


FED. ROAD DIST. NO.	STATE	PROJECT NO.	FISCAL YEAR	SHEET NO.	TOTAL SHEETS
8	ARK.	WER 22		4	15
STATE JOB NO. 7315				4	15



PLAN



ELEVATION

B.M. Nail in side of tel. pole 36' Rt. of Sta. 426+90 El. 200.94  
Lengths of 18" octagonal precast concrete piles shown are for estimating purposes only. Drive one pile in each of Bents 3 and 9 for test piles. Penetration of piles shown is minimum and, if necessary, a water jet shall be used to secure the required penetration.  
For details See Drawings No. 2... & 236GA  
Loading: H20S16  
Stresses: Reinforcing Steel 18000 #/sq in.  
Concrete 1000 #/sq in.

REVISED Aug. 23, 1945 Grade raised 2'

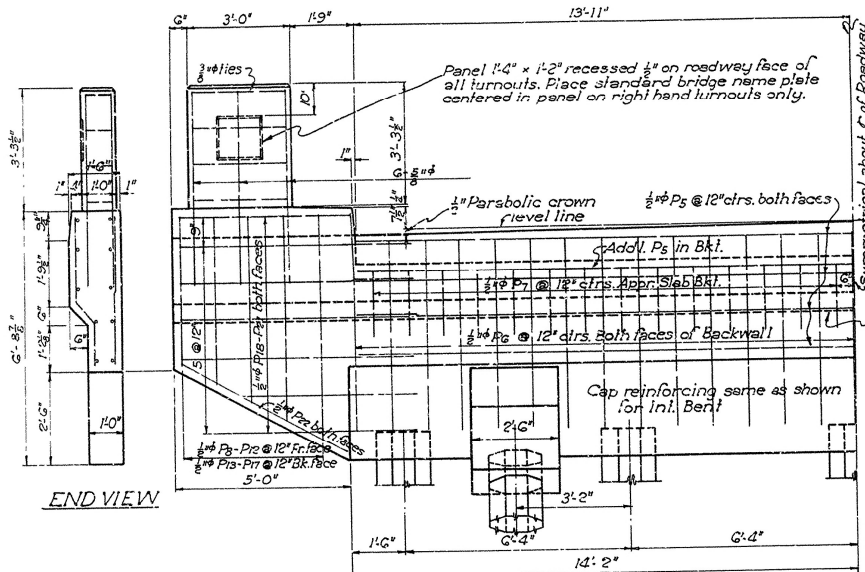
LAYOUT OF BRIDGE  
RELIEF OPENING LITTLE MISSOURI RIVER  
PRESCOTT - GURDON ROAD  
CLARK COUNTY  
ROUTE 67 SEC. 4

ARKANSAS STATE HIGHWAY COMMISSION  
LITTLE ROCK, ARK.

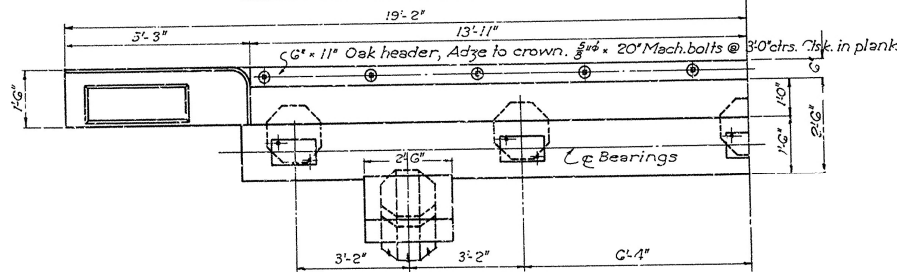
Drawn By: L.P.C. Date: 6-20-45  
Traced By: E.A.V. Date: 6-25-45  
Checked By: Date:  
Scale: 1 in. = 20 ft.  
BRIDGE No. 1384 DRAWING No. 6734

*N.B. Larver*

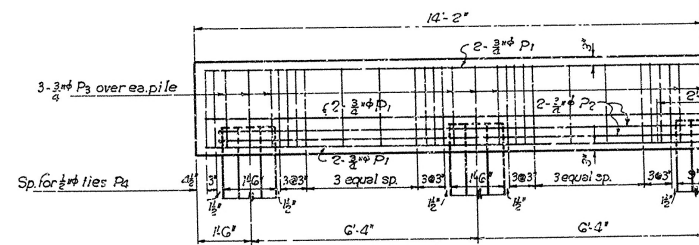
No.4 Wire



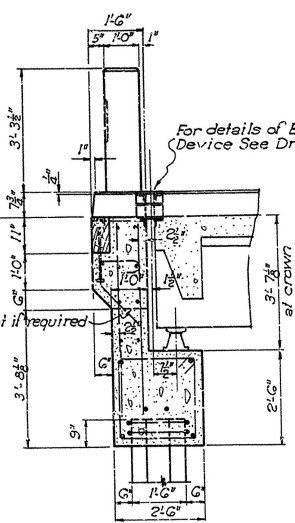
HALF FRONT ELEVATION END BENT



HALF PLAN END BENT

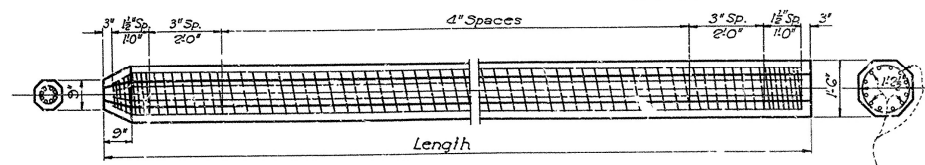


HALF ELEVATION INTERMEDIATE BENT

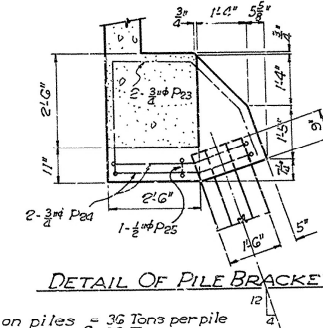


SECTION BETWEEN PILE BRACKETS

Maximum Bearing on piles = 36 Tons per pile  
Drive to minimum capacity of 38 Tons



DETAILS OF 18" PRECAST CONCRETE PILE

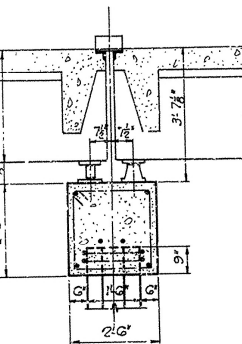


DETAIL OF PILE BRACKET

GENERAL NOTES:  
All concrete to be Class 'S'.  
Volume occupied by oak header plank is included in quantity of Class 'S' Concrete. Bolts for header are included in weight of Reinforcing Steel.  
For additional general notes See Drwg. No. 2366.

LIST OF BENT BARS

Mark	Size	Length	A	B	C	D	Diagram
P <sub>2</sub>	3/4"	31'-0"	1'-7"	14'-8 1/2"			
P <sub>3</sub>	3/4"	6'-3"	2'-1"	2'-1"			
P <sub>4</sub>	1/2"	9'-1"	2'-1"	2'-1"			
P <sub>25</sub>	1/2"	5'-9"	5"	2'-1"			
P <sub>7</sub>	1/2"	31'-9"	1'-0"	9"	1'-6"		
P <sub>23</sub>	3/4"	8'-3"	3'-0"	2'-1"	1'-11"	1'-3"	
P <sub>24</sub>	3/4"	12'-3"	2'-2"	1'-7"	3'-9"	2'-0"	
P <sub>13</sub>	1/2"	4'-2"	1'-2"				
P <sub>14</sub>	1/2"	4'-10"	1'-8"				
P <sub>15</sub>	1/2"	5'-4"	2'-2"				
P <sub>16</sub>	1/2"	5'-10"	2'-8"				
P <sub>17</sub>	1/2"	6'-4"	3'-2"				



SECTION ONE OF ROADWAY

DETAILS OF  
STANDARD R.C. PILE BENTS  
35'-0" R.C.D. GIRDER SPANS  
28'-0" CLEAR ROADWAY 1'-8" WALKWAYS

ARKANSAS STATE HIGHWAY COMMISSION  
LITTLE ROCK, ARK.  
Drawn By: E.A.W. Date: 8-17-45  
Traced By: E.A.W. Date: 8-22-45  
Checked By: \_\_\_\_\_ Date: \_\_\_\_\_  
Scale: 1/2" = 1' ft.  
BRIDGE NO. \_\_\_\_\_ DRAWING NO. 2366A

N.B. Sawyer  
INCORPORATED ENGINEER (BRIDGE)