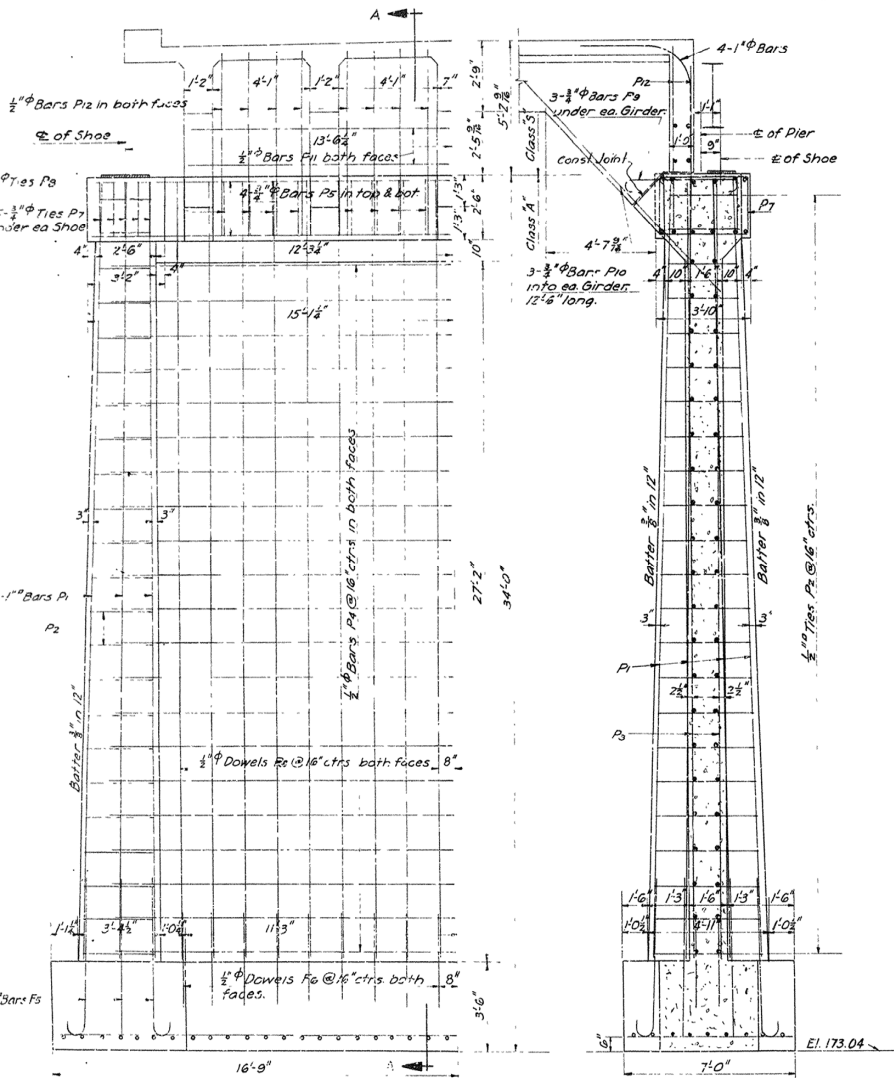


For Details of 36' R.C.D. Girder Span, See Drwg. No. 2329  
 " " 90' Low Truss, See Drwg. No. 2447

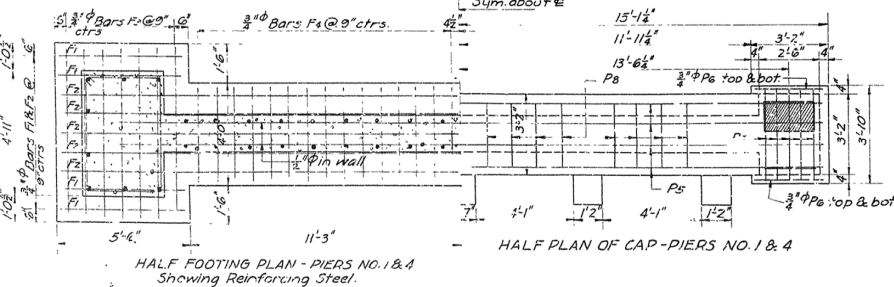
For Details of 110' Low Truss  
 See Drwg. No. 2450

FISCAL YEAR	Job No	SHEET NO
1930	3125	7

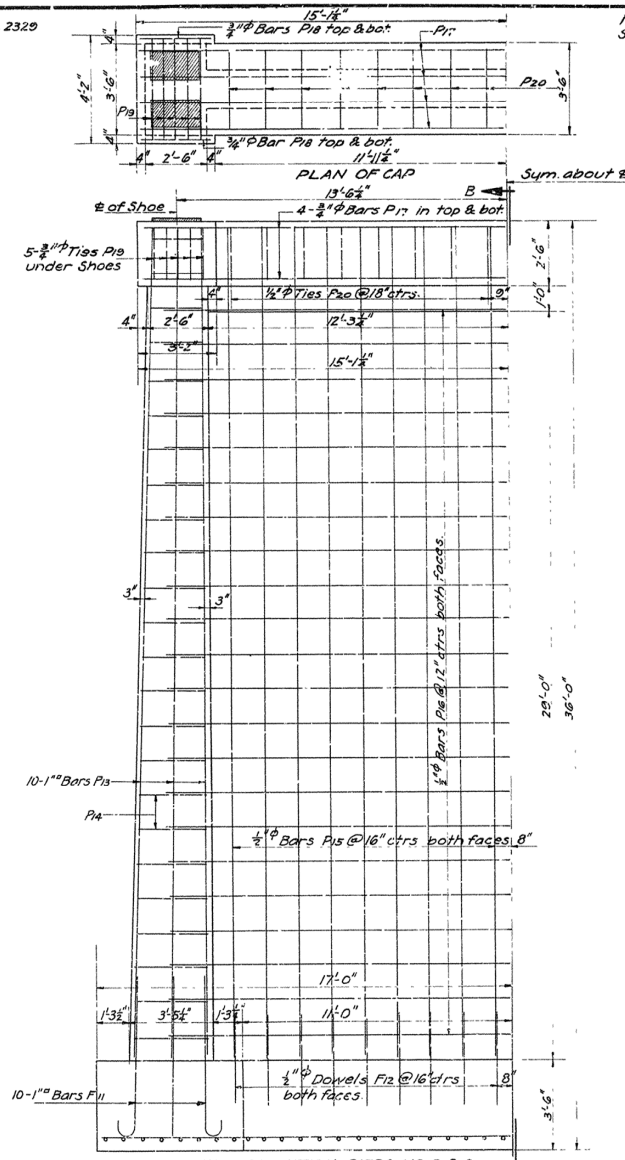
200-B 1930



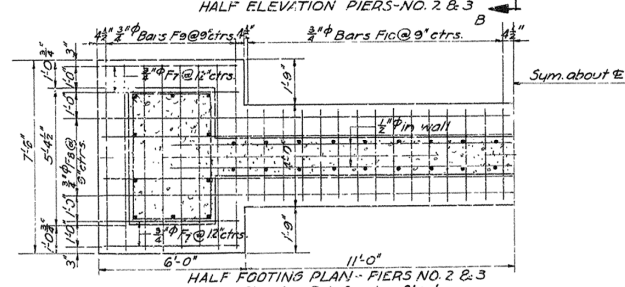
SECTION A-A



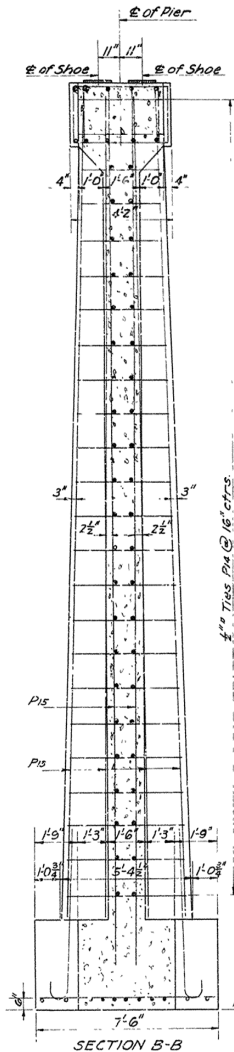
HALF FOOTING PLAN - PIERS NO. 1 & 4  
 Showing Reinforcing Steel.



SECTION B-B



HALF FOOTING PLAN - PIERS NO. 2 & 3  
 Showing Reinforcing Steel.



Mark	Size	Length	Bending Diagram
F5 & F11	1"	7'-3"	
P2	1/2"	Varies by 1" from 13'-0" to 4'-6"	
P7	3/4"	12'-5"	
P8	1/2"	10'-8"	
P14	1/2"	Varies by 1" from 13'-10" to 3'-0"	
P19	3/4"	12'-8"	
P20	1/2"	11'-4"	
P9	3/4"	6'-0"	

DETAILS OF PIERS  
 BRIDGE OVER LITTLE MISSOURI RIVER  
 PRESCOTT-LITTLE MO. RIVER R.  
 CLARK COUNTY  
 ROUTE 67 SEC. 4

ARKANSAS STATE HIGHWAY COMM.  
 LITTLE ROCK, ARK.

Drawn By: *H.B. Garrow* Date: 3-21-30  
 Traced By: *H.B. Garrow* Date: 3-24-30  
 Check'd By: *H.B. Garrow* Date: 3-24-30

*H.B. Garrow*  
 BRIDGE ENGINEER

BRIDGE NO. 1381 DRAWING NO.