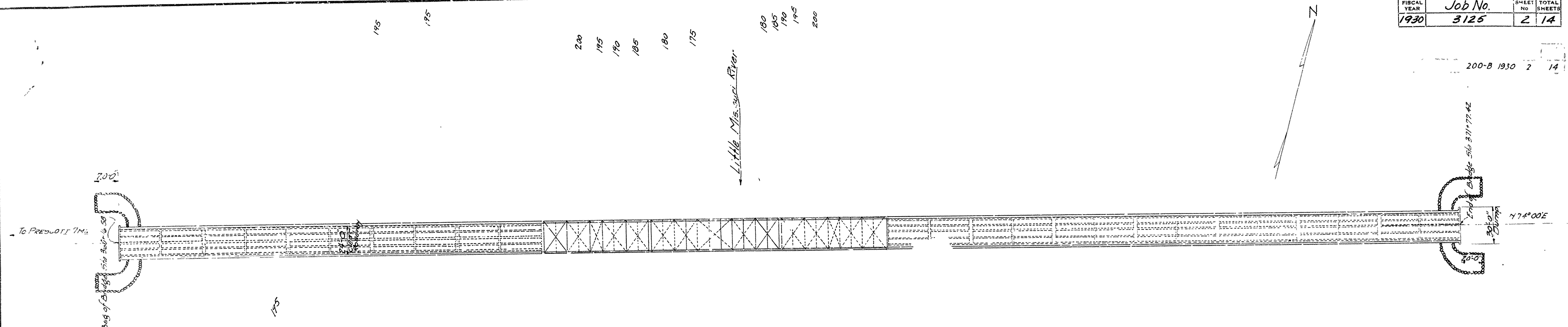


| FISCAL YEAR | Job No. | SHEET NO. | TOTAL SHEETS |
|-------------|---------|-----------|--------------|
| 1930 | 3125 | 2 | 14 |

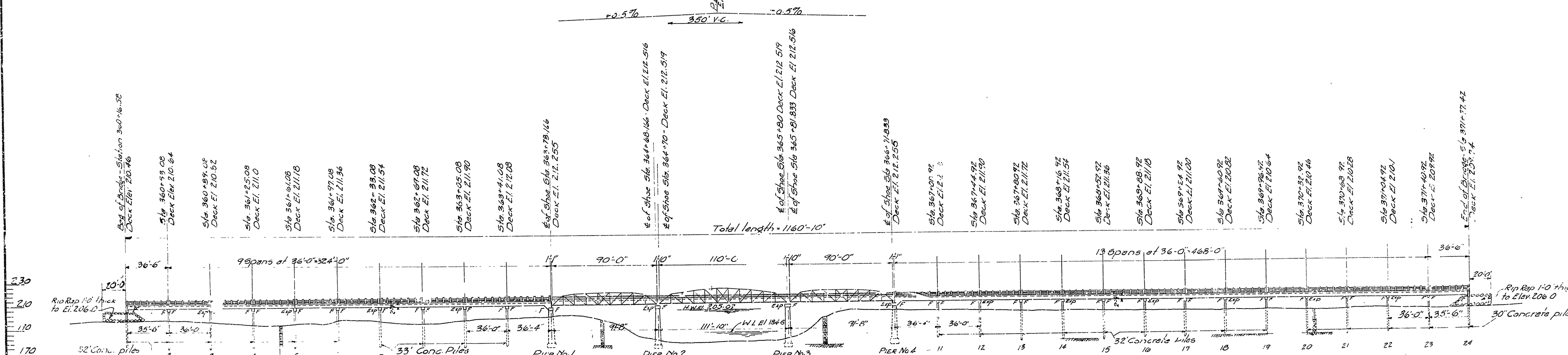
200-B 1930 2 14



PLAN

General Notes
All exposed corners to have 1/4" Chamfer unless otherwise noted.
All Concrete in Substructure to be Class "A", in Superstructure and Pile Bents Class "B".
Reinforcing Steel to be deformed bars of Structural or Intermediate Grade. Shop Lists and Bending Diagrams must be submitted by the Contractor before fabrication is begun.
Concrete in Substructure to be poured in the dry.
Specifications Arkansas Standard Road & Bridge Specifications adopted May 30, 1925 and revised.
Lengths of Piling shown are assumed for Estimating Quantities only. Actual lengths to be determined in the field.
For Details of 36"-0" RCD Girder and Pile Bents see Dwg. No. 1381.
For Details of 90"-0" Low Truss Span see Dwg. No. 1382.
Piers see Dwg. No. 1383.

| QUANTITIES | | | | |
|------------|---------------------------------|----------|----------|---------|
| Item No. | Description | Quantity | Unit | Remarks |
| 13 | Dry Excavation for Structures | 307 | Cu. Yds. | |
| 13 | Wet " " " " | 432 | " " | |
| 13 | Rock " " " " | 39 | " " | |
| 54 | Class "B" Concrete | 398.40 | " " | |
| 54 | " " " " | 1315.54 | " " | |
| 55 | Reinforcing Steel | 375.68 | Lbs. | |
| 56 | 5" Natural Steel (Trusses) | 310.07 | " " | |
| 68 | Precast Concrete Piling | 381.0 | Lin. ft. | |
| 69 | Rip Rap | 155 | Cu. Yds. | |
| 74 | Concrete Railing for Structures | 1736 | Lin. ft. | |

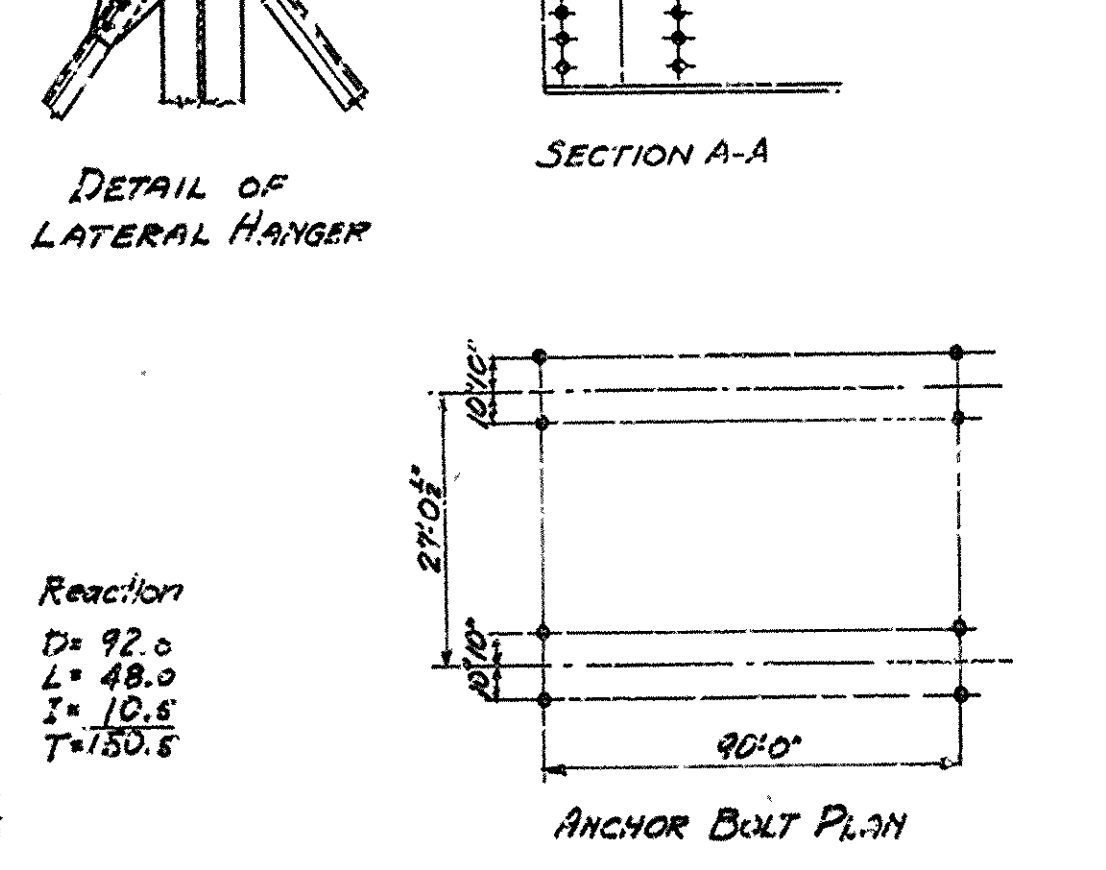
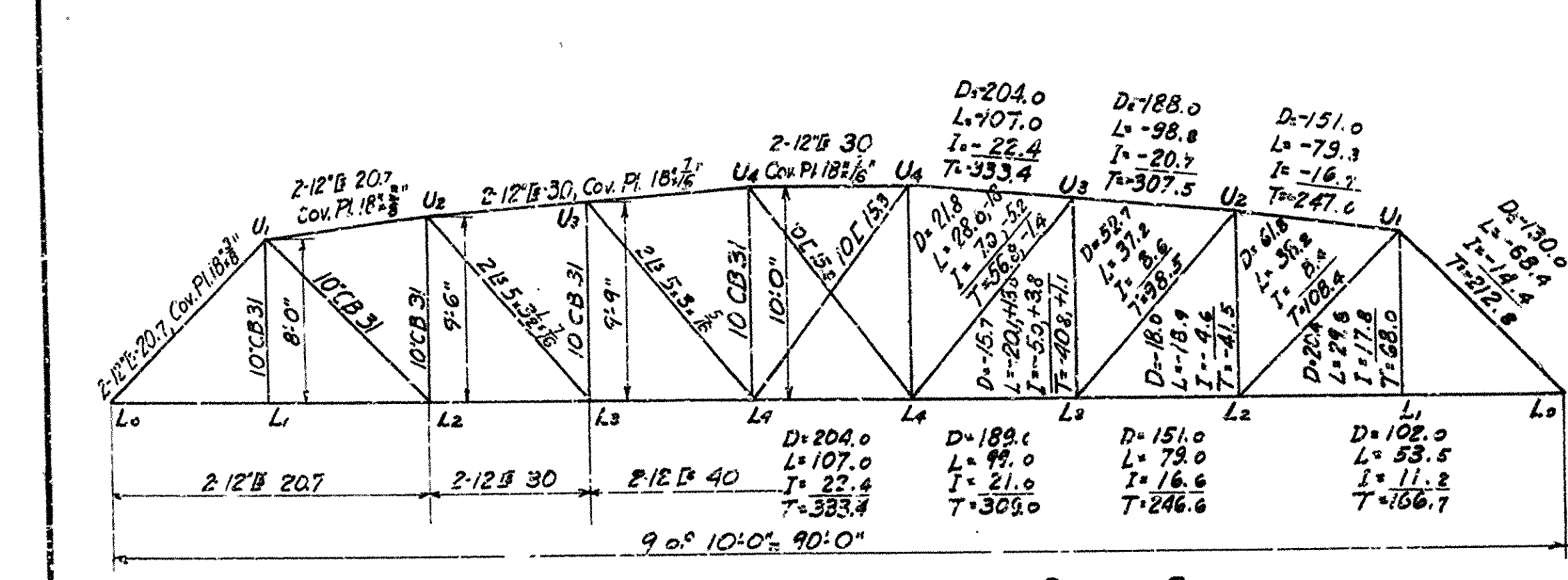
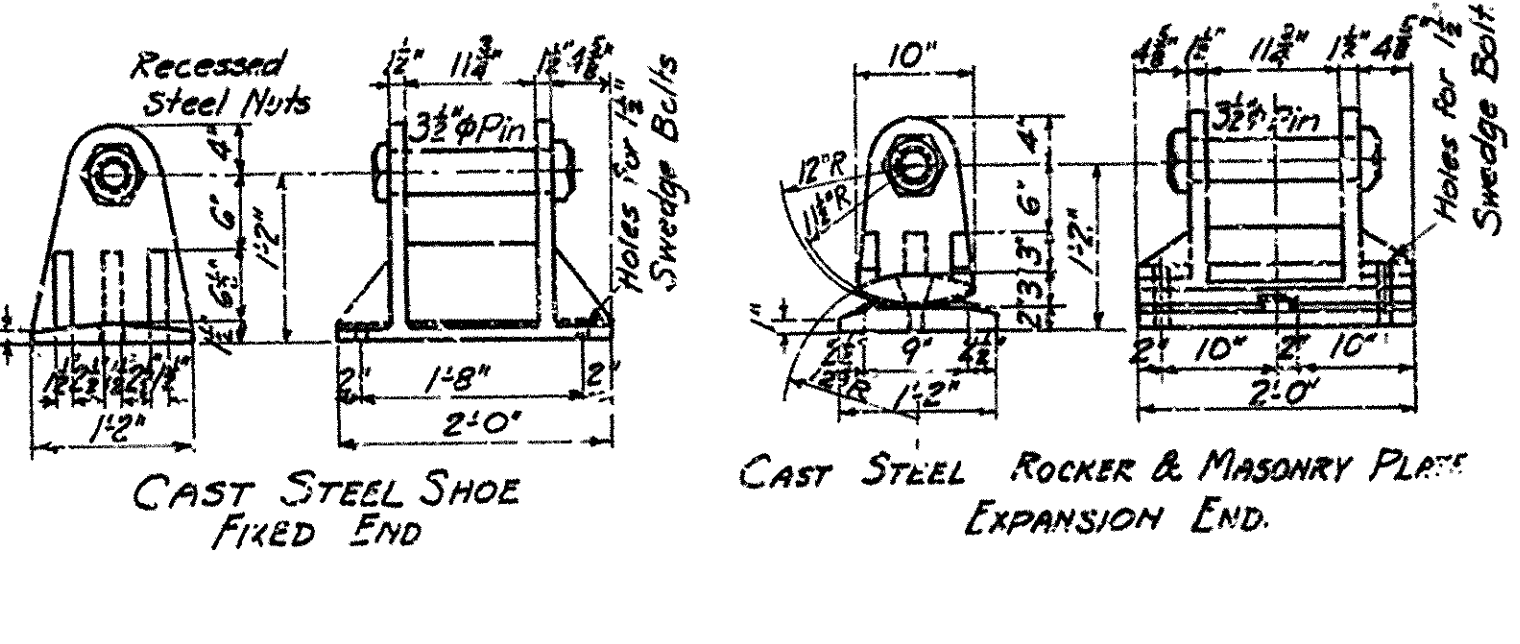
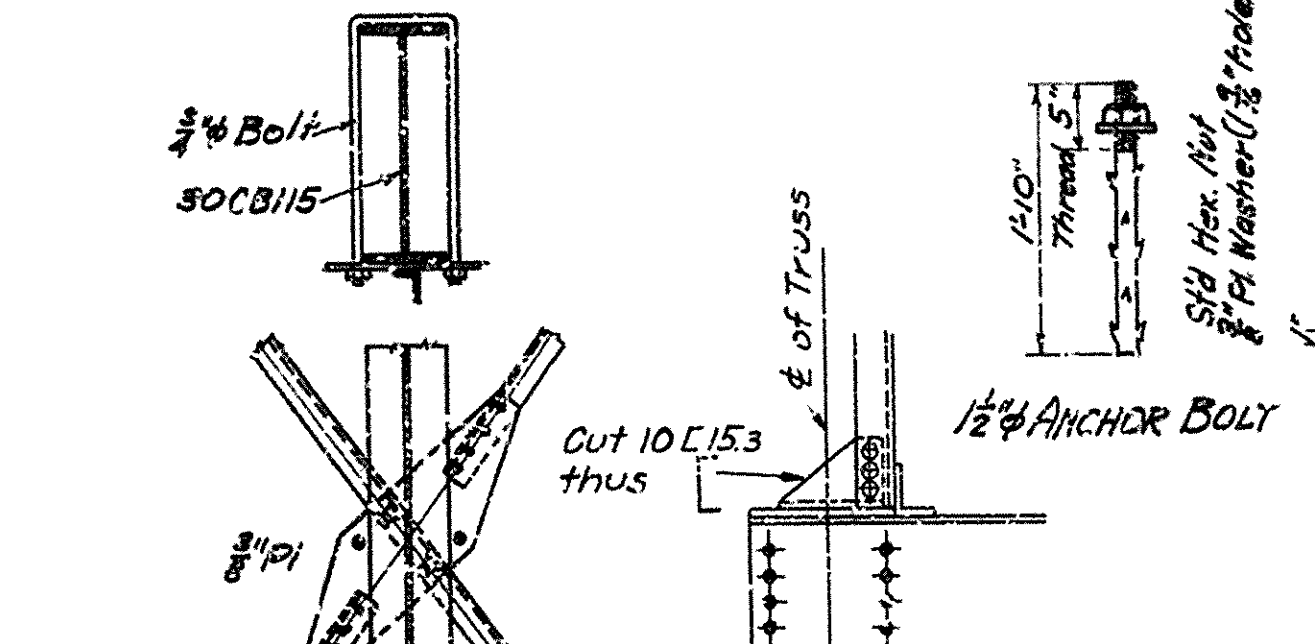
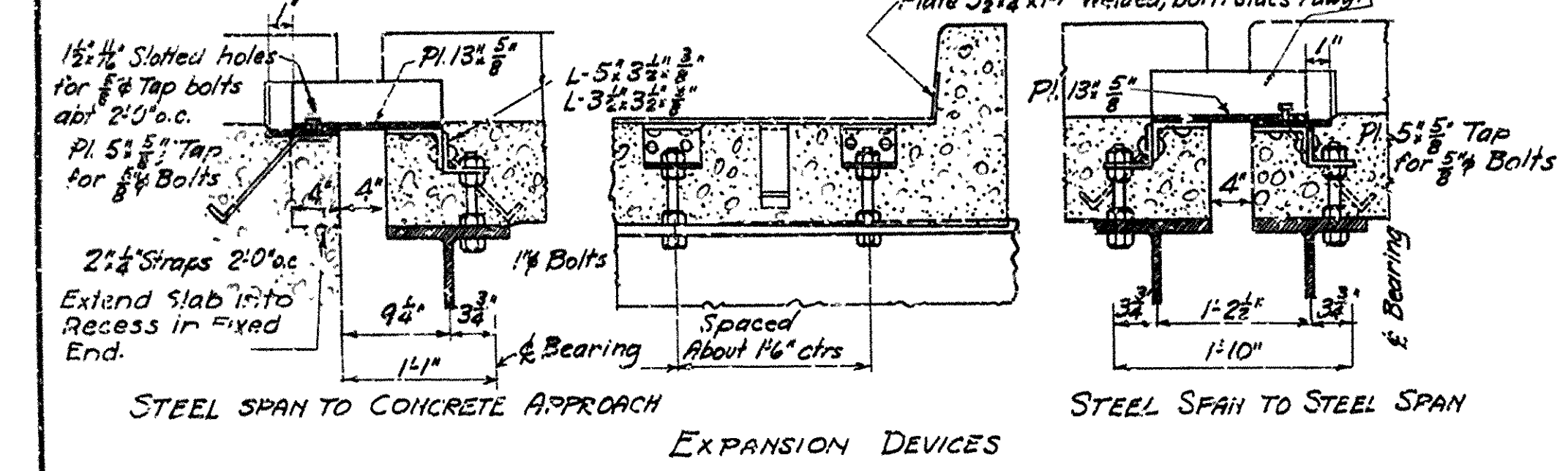
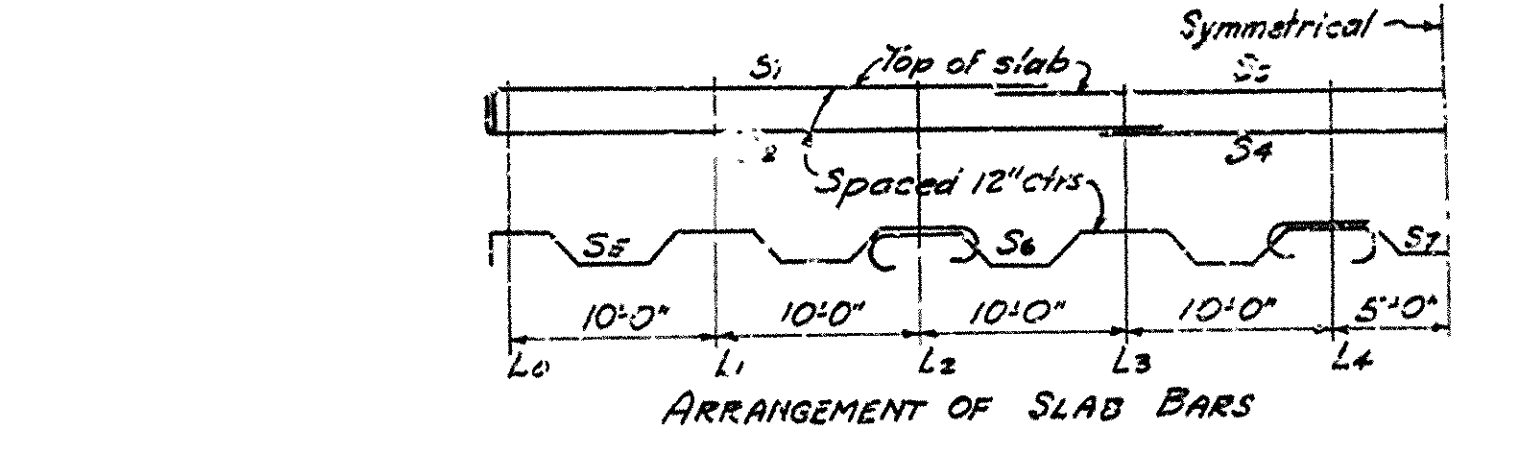
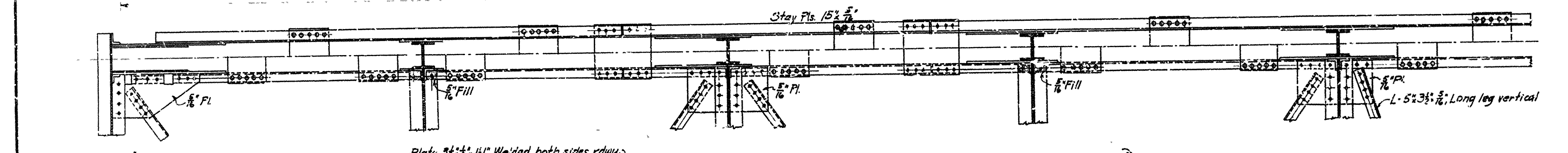
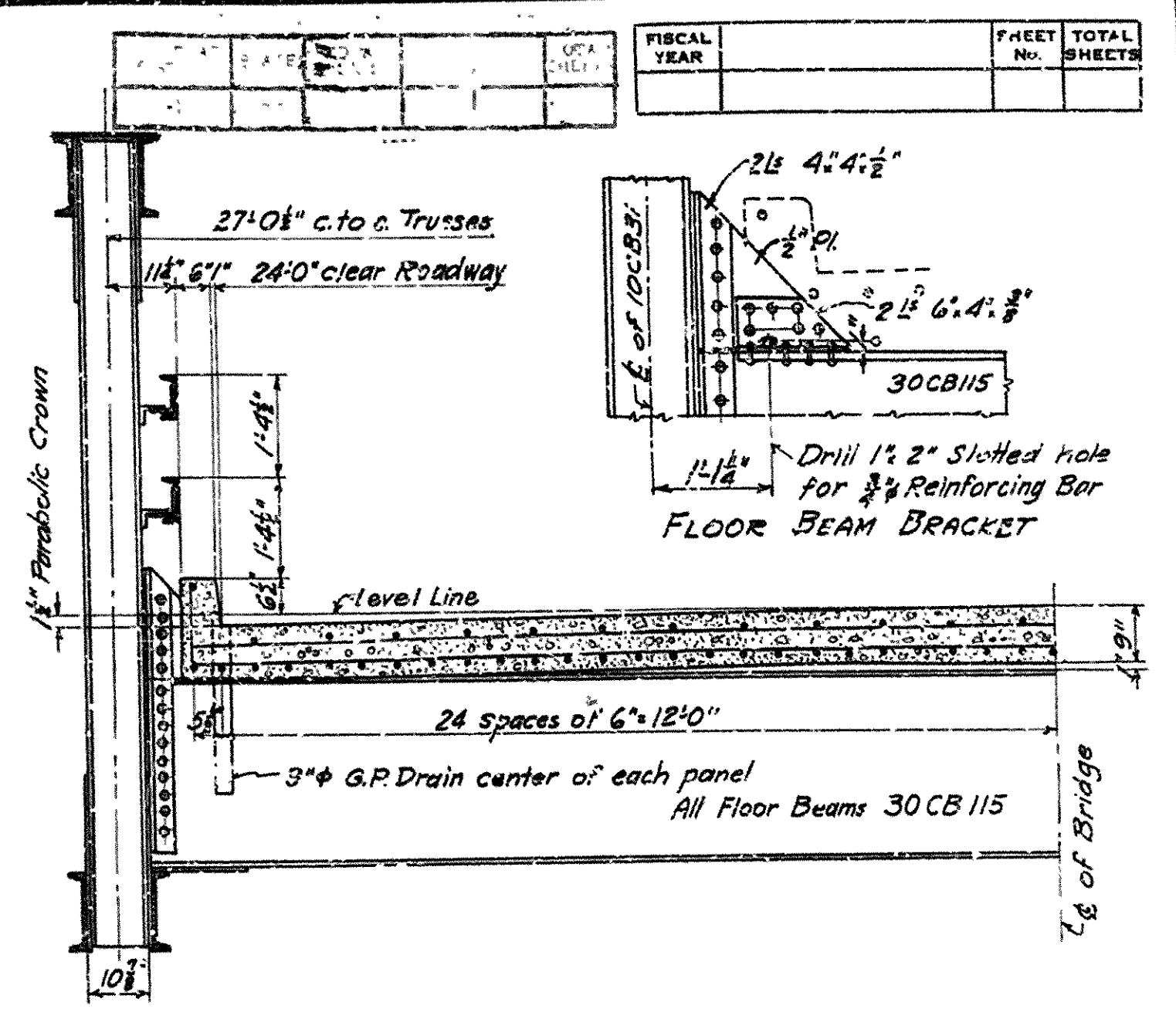
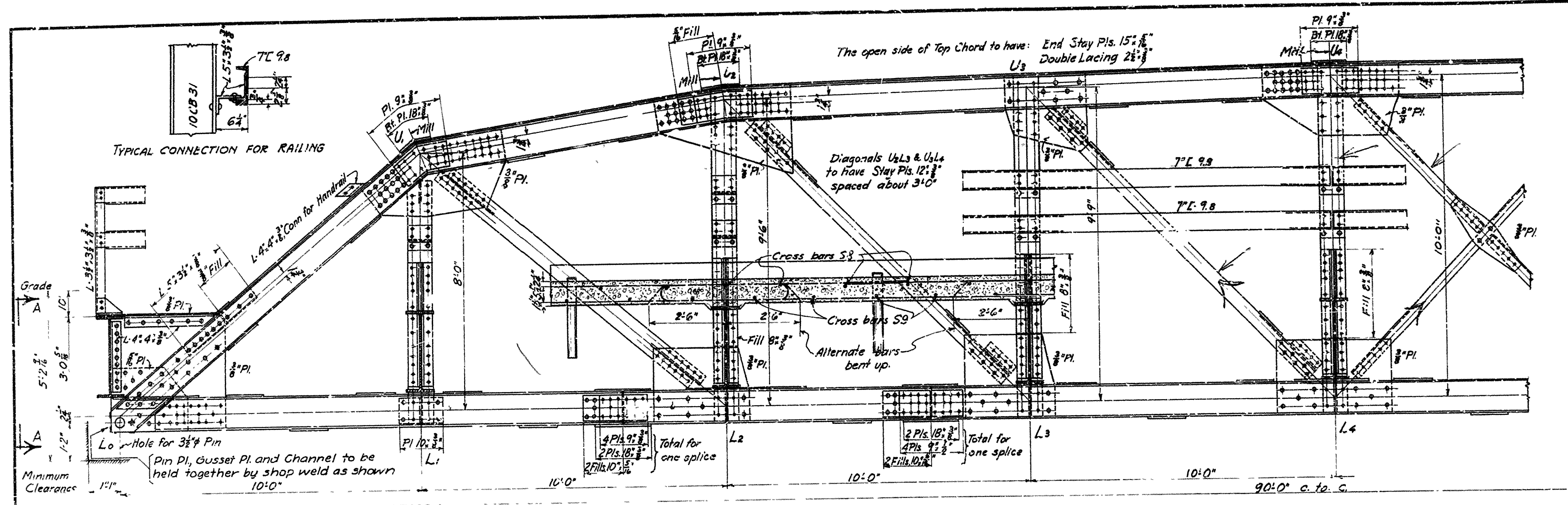


ELEVATION

LOG OF BORINGS
Station 361+50, Sur. El. 196.35
7' Soft Clay
6' Clay & Sand
2' Packed Sand - stopped in Black Sand
Station 364+21.75, Sur. El. 196.14
10' Sand and Silt
10' Fine Sand with small percentage of Clay
2' River Gravel
Rock at El. 174.06
Station 366+13, Sur. El. 196.35
8'0" Sandy Loam
5'4" Sandy Clay
7'9" River Gravel
2'0" Soft Sandy Shale
Rock at El. 173.02
Station 370+42, Sur. El. 196.32
8'5" Packed Clay
11'2" Packed Sand & Gravel
Rock at El. 176.4"

**GENERAL LAYOUT OF
BRIDGE OVER LITTLE MISSOURI RIVER**
PRESCOTT - LITTLE MISSOURI RIVER ROAD
CLARK COUNTY
ROUTE 67 SEC. 4 & 3
ARKANSAS STATE HIGHWAY COMMISSION
LITTLE ROCK, ARK.
Drawn By: *HB* Date: 3-15-30
Traced By: *HB* Date: 3-28-30
Checked By: _____ Date: _____
BRIDGE NO. 1381
DRAWING NO. 2600
Scale: 1 in. = 40 ft.

N.B. Lamm
BRIDGE ENGINEER



NOTES

Rivets $\frac{3}{4}$ " Oper. holes $\frac{13}{16}$ "

All holes in truss connections to be sub-punched $\frac{3}{8}$ " and reamed to size while truss is assembled; this applies to field as well as shop rivets.

Floor beam connections to be sub-punched $\frac{3}{8}$ " and reamed to a metal template.

All field connections shall be riveted.

Shop paint: After being completely assembled and shop work finished, all pieces shall be given one coat of red lead and raw linseed oil before shipment.

Field paint: Apply two coats of different colors as specified by the engineer.

Floor slab: Concrete to be Class "S". One inch has been added for wear.

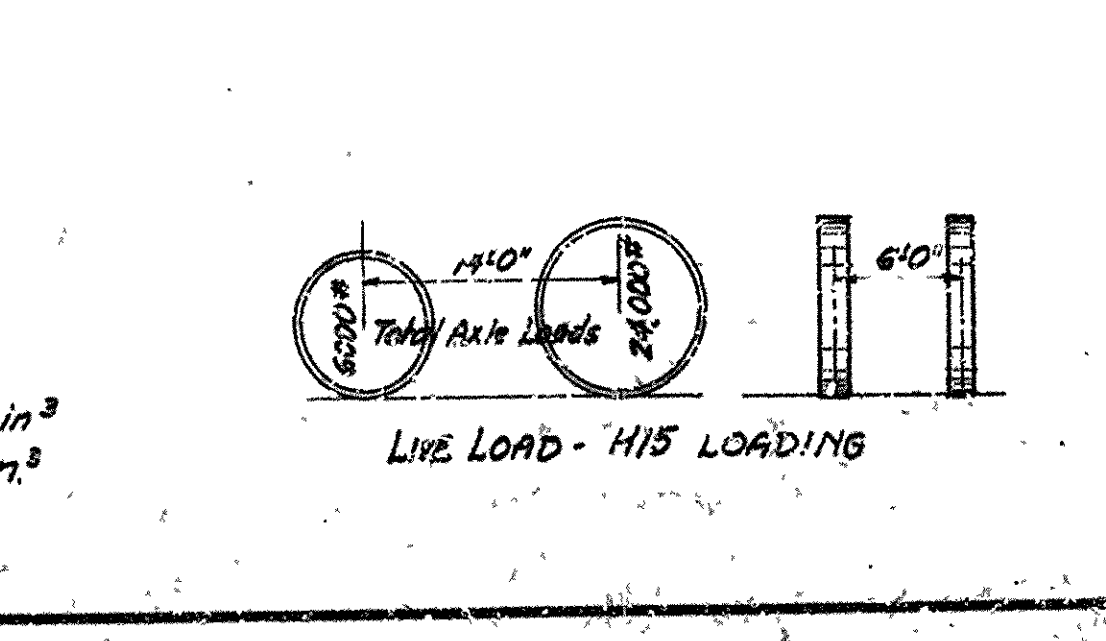
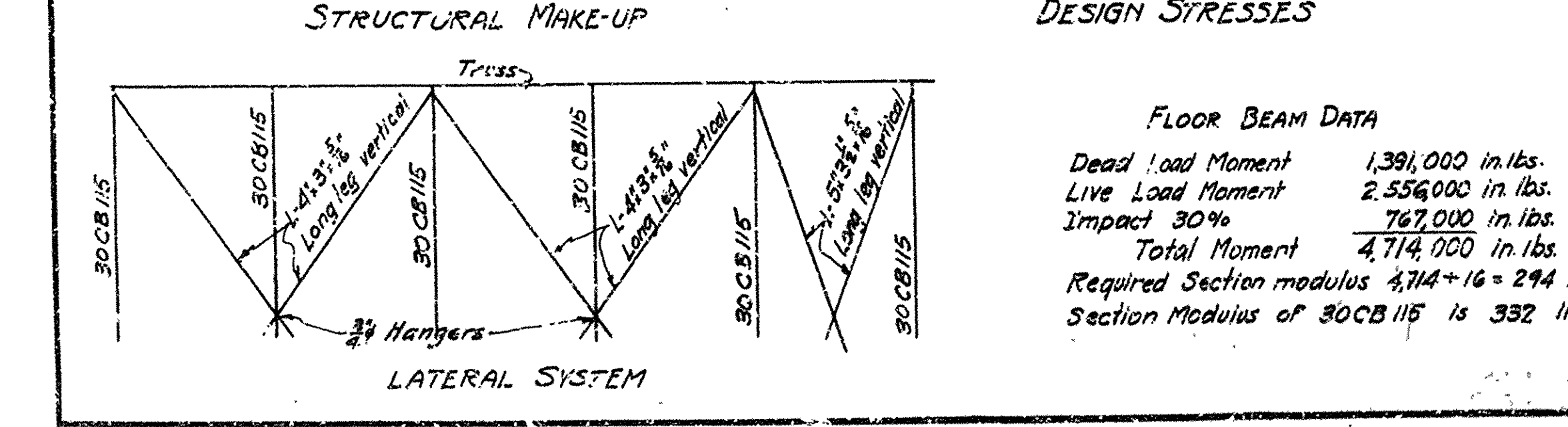
All floor beams to be milled to exact length after framing angles have been riveted.

Shapes of equal or greater strength may be substituted for the shapes shown, but payment will be made in accordance with sizes given on this plan.

This drawing shows general features of design only.

Shop drawings shall be made in compliance with specifications, submitted and approved before fabrication is begun.

Specifications: Arkansas Standard Road & Bridge Specifications, adopted May 30, 1925 & Revised



UNIT STRESSES

Concrete 750# per sq. in.

Reinforcing steel 16,000# per sq. in.

Structural steel 16,000# per sq. in.

| SLAB REINFORCING (ONE SPAN) | | | | |
|-----------------------------|----|-----------------|---------|-------------------------------------|
| MARK | NO | SIZE | LENGTH | BENDING |
| S1 | 52 | $\frac{3}{4}$ " | 27'-4" | 26'-11" |
| S2 | 52 | $\frac{3}{4}$ " | 32'-4" | 31'-11" |
| S3 | 26 | $\frac{3}{4}$ " | 42'-6" | STRAIGHT |
| S4 | 26 | $\frac{3}{4}$ " | 32'-6" | STRAIGHT |
| S5 | 50 | $\frac{3}{4}$ " | 24'-7" | 2'-8" 5'-0" 3'-4" 5'-0" 4'-1" |
| S6 | 50 | $\frac{3}{4}$ " | 26'-4" | 4'-1" 5'-0" 3'-4" 5'-0" 5'-4" 4'-1" |
| S7 | 25 | $\frac{3}{4}$ " | 16'-0" | 4'-1" 5'-0" 3'-4" 4'-1" |
| S8 | 46 | $\frac{3}{4}$ " | 24'-11" | STRAIGHT |
| S9 | 47 | $\frac{3}{4}$ " | 27'-3" | 24'-11" |

ESTIMATED QUANTITIES

Structural Steel 87500 lbs. Note: Structural Steel tonnage does not include weight of expansion device.

Reinforcing Steel 13,625 "

Class "S" Concrete 664 cu yd.

Cast Steel 1670 lbs.

Reinforced Concrete Quantities are figured for Slab between outside edges of floor beams.

STANDARD 90'-0" LOW TRUSS SPAN

24'-0" CLEAR RDWY

ARKANSAS STATE HIGHWAY COMMISSION

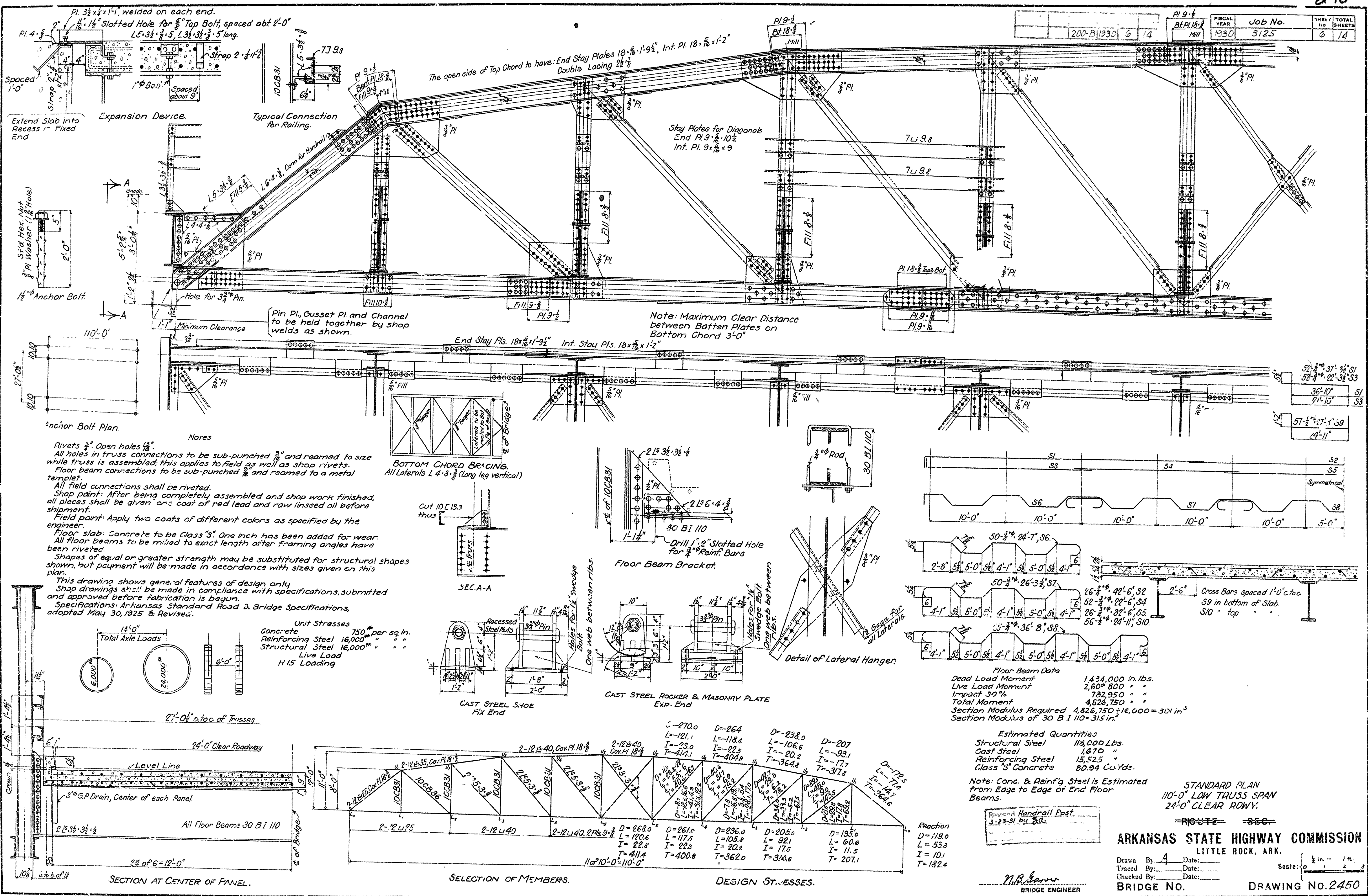
LITTLE ROCK, ARK.

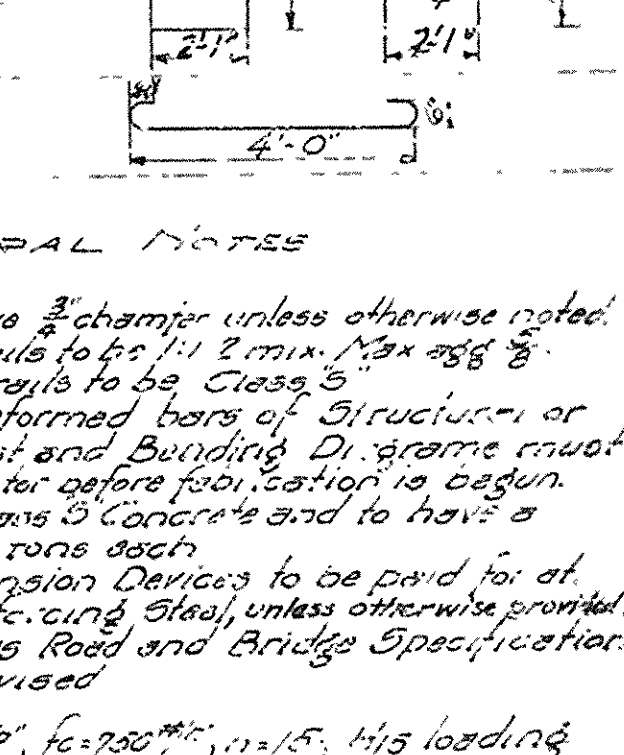
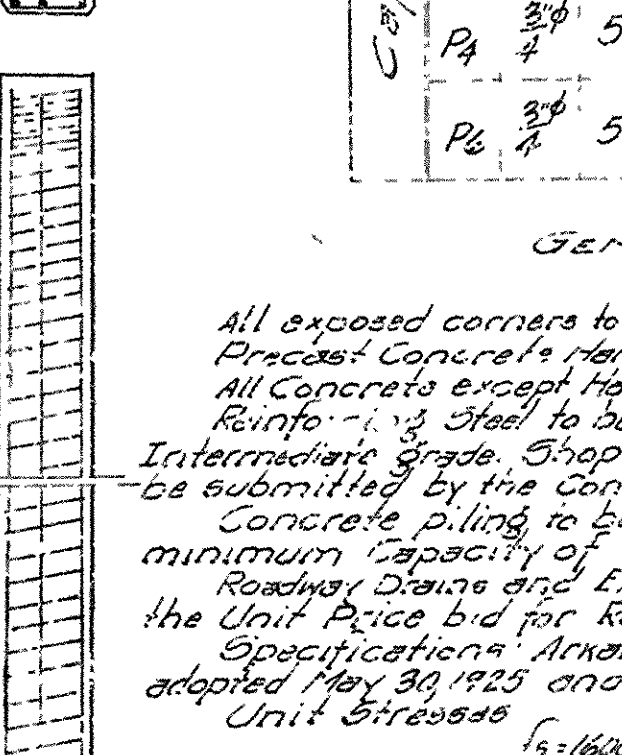
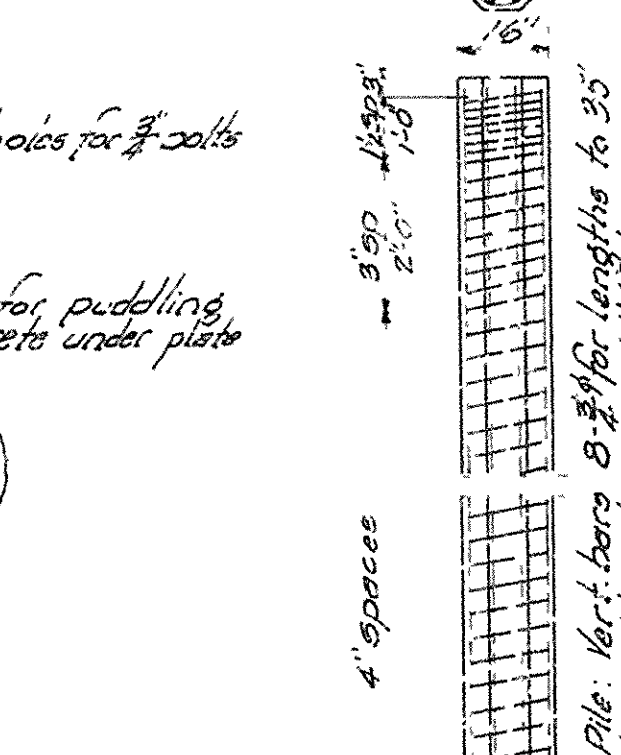
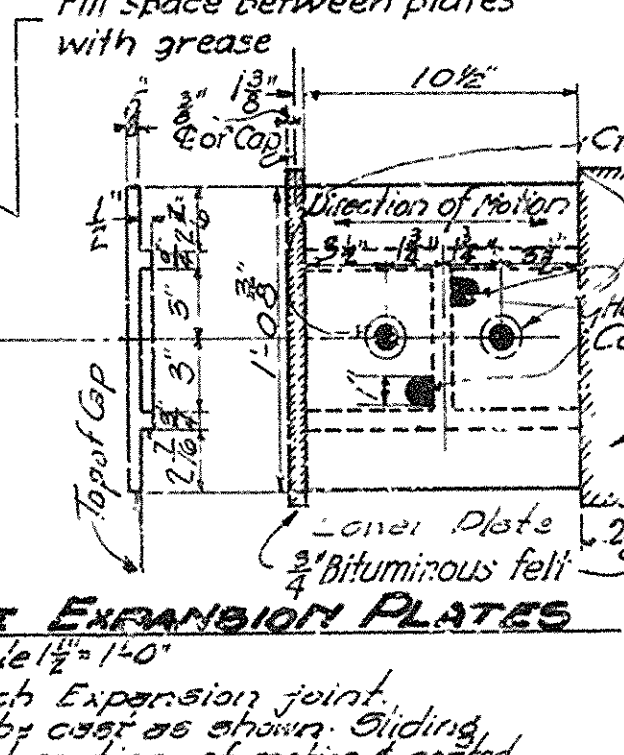
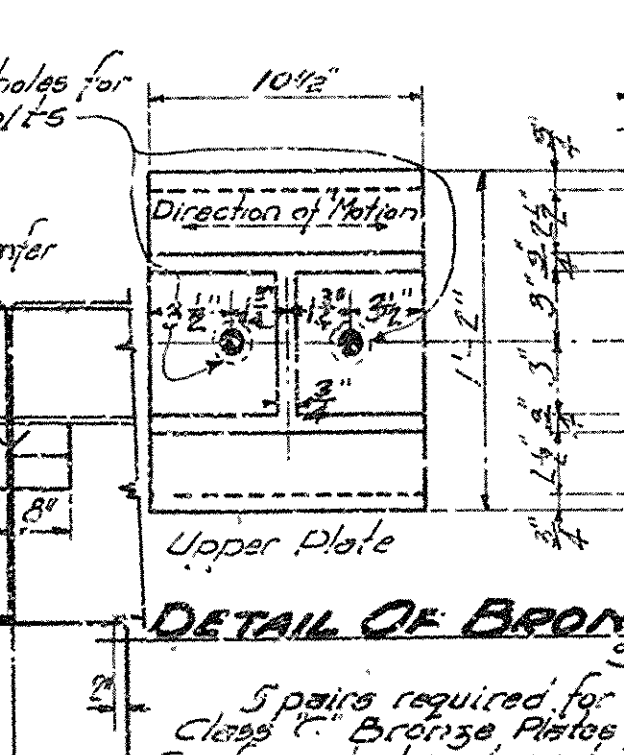
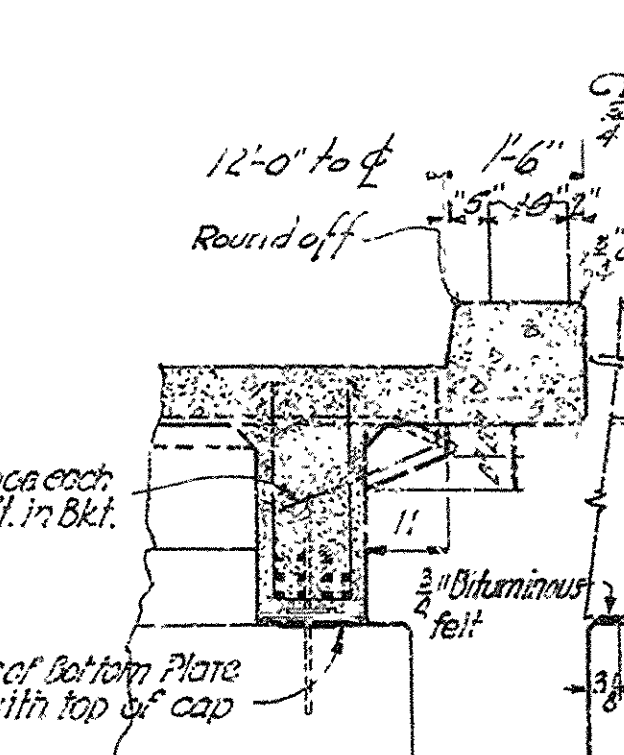
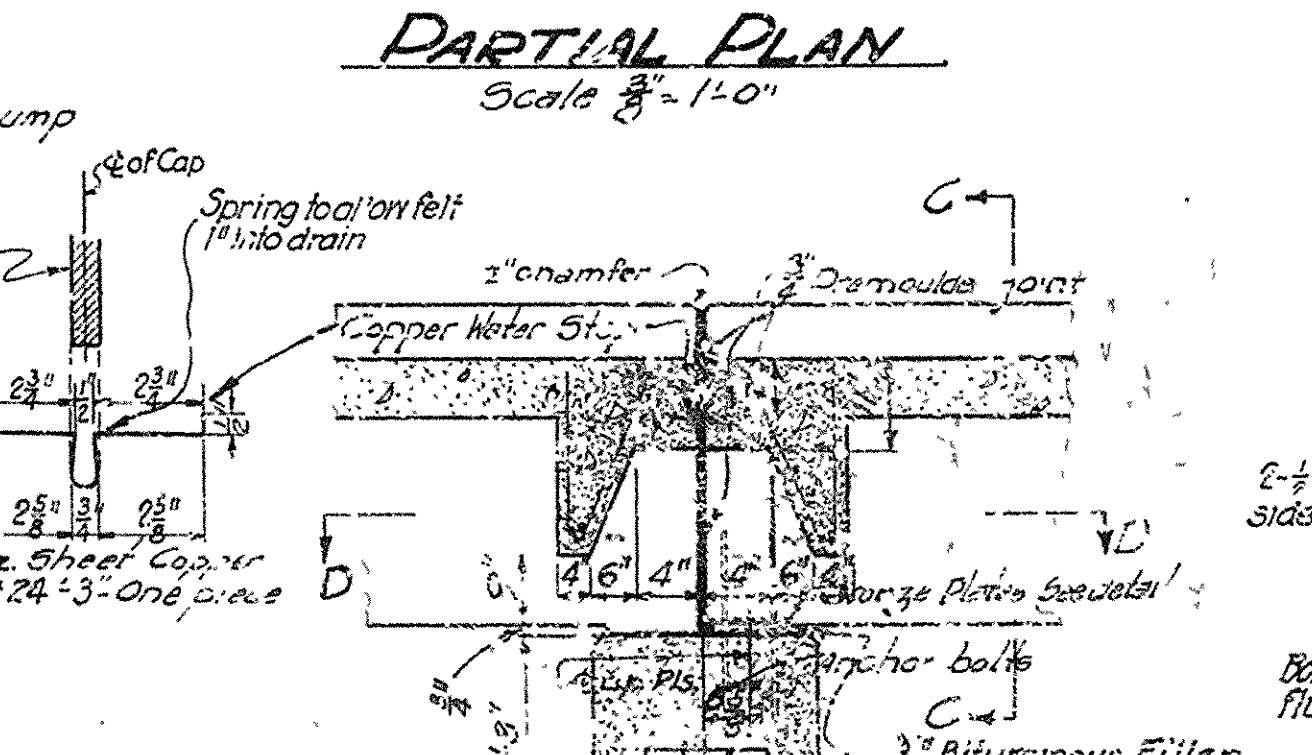
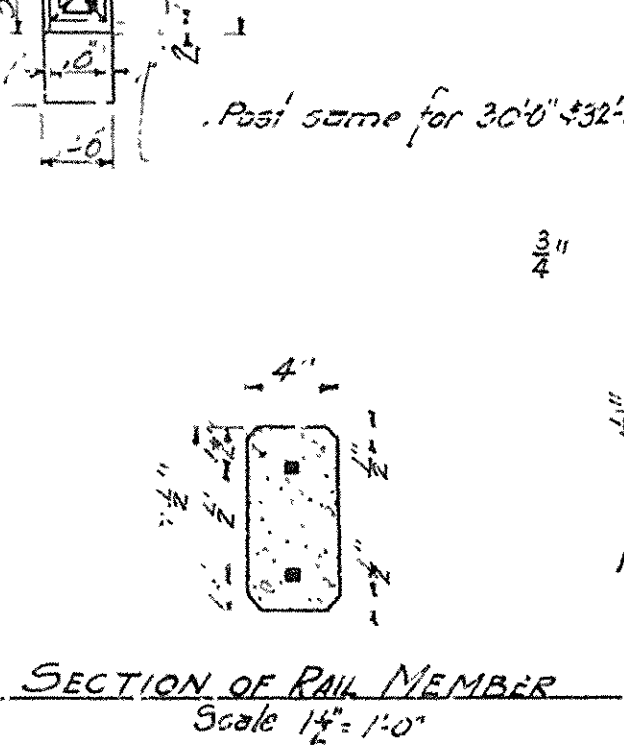
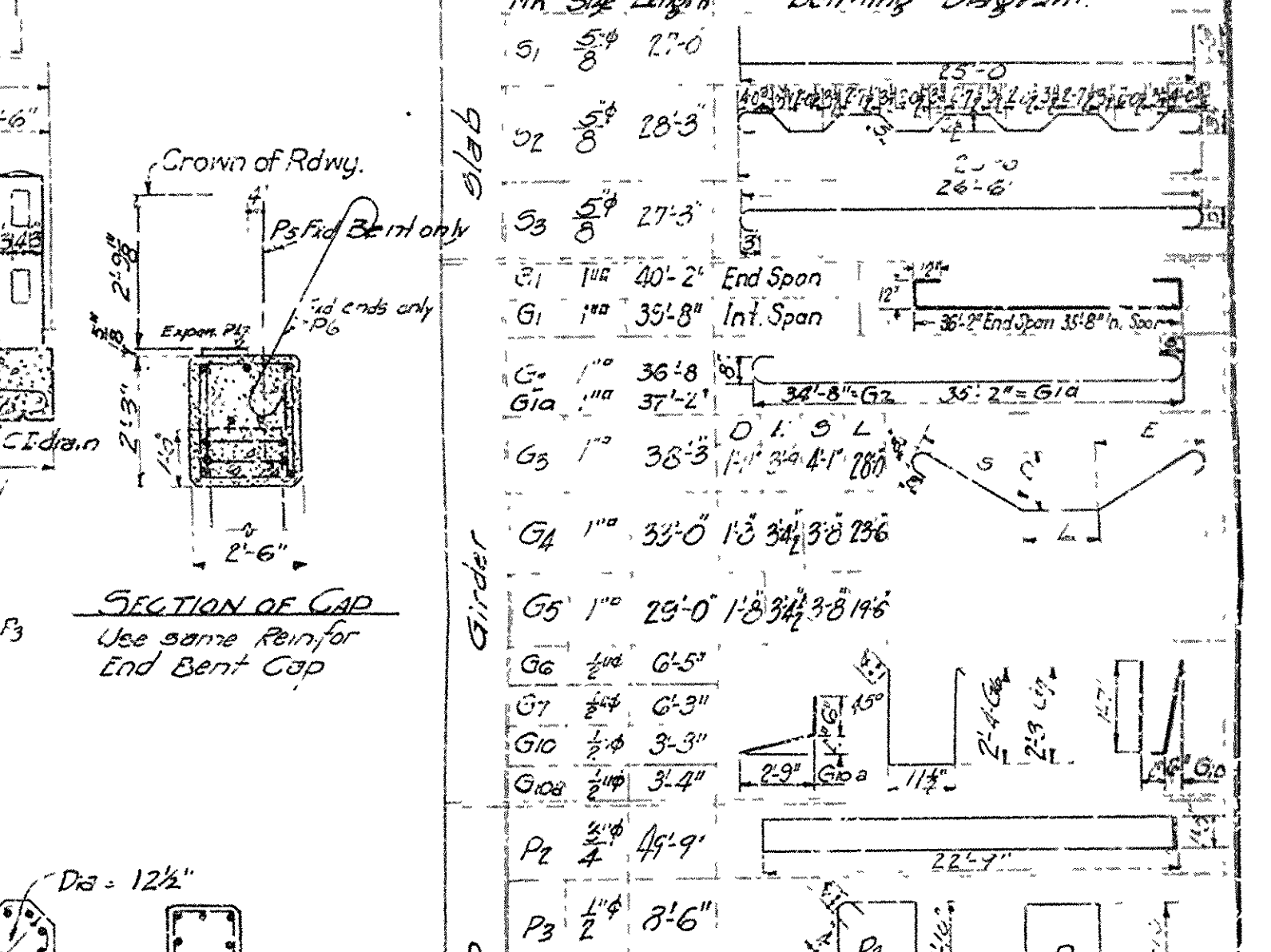
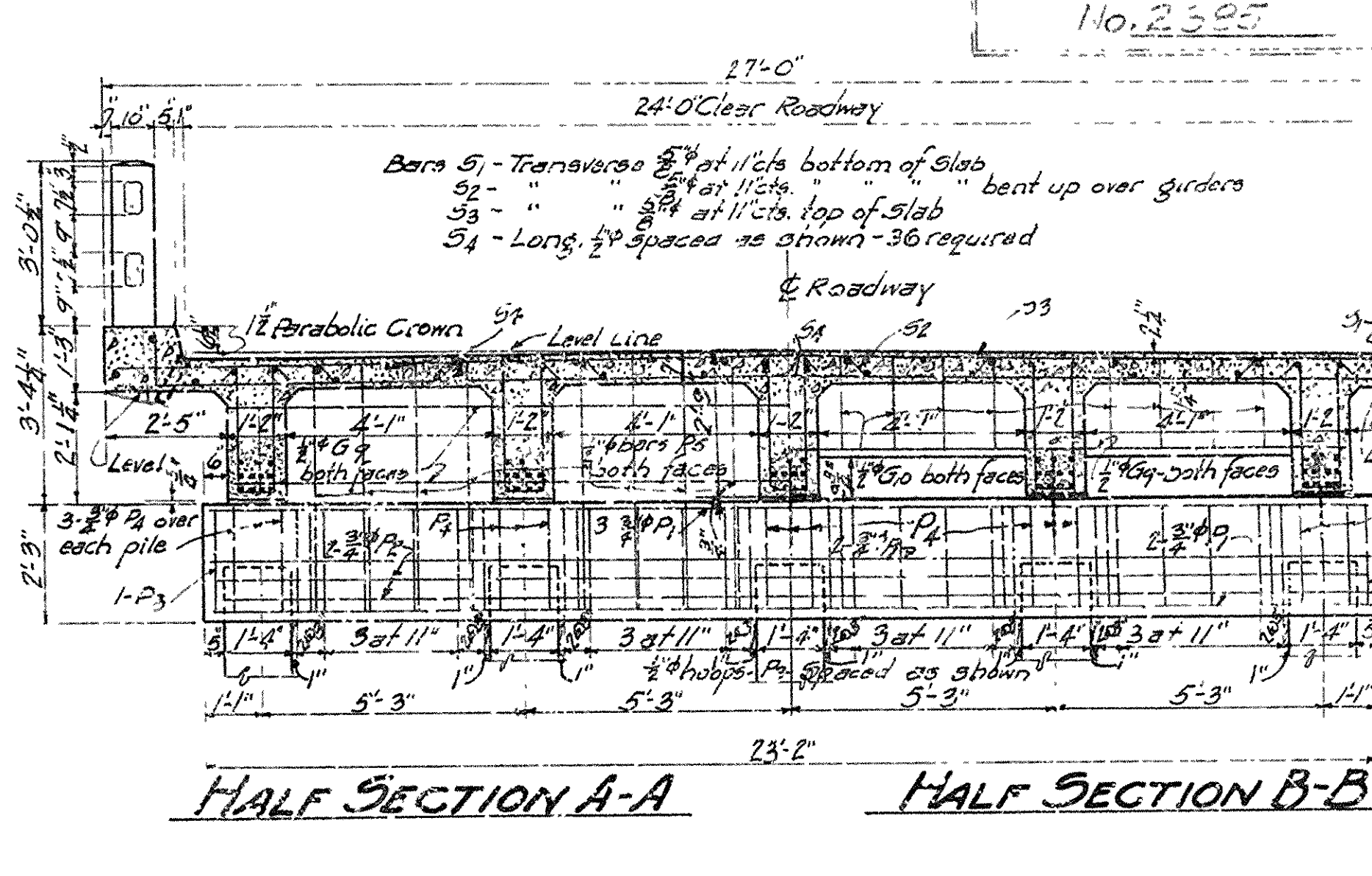
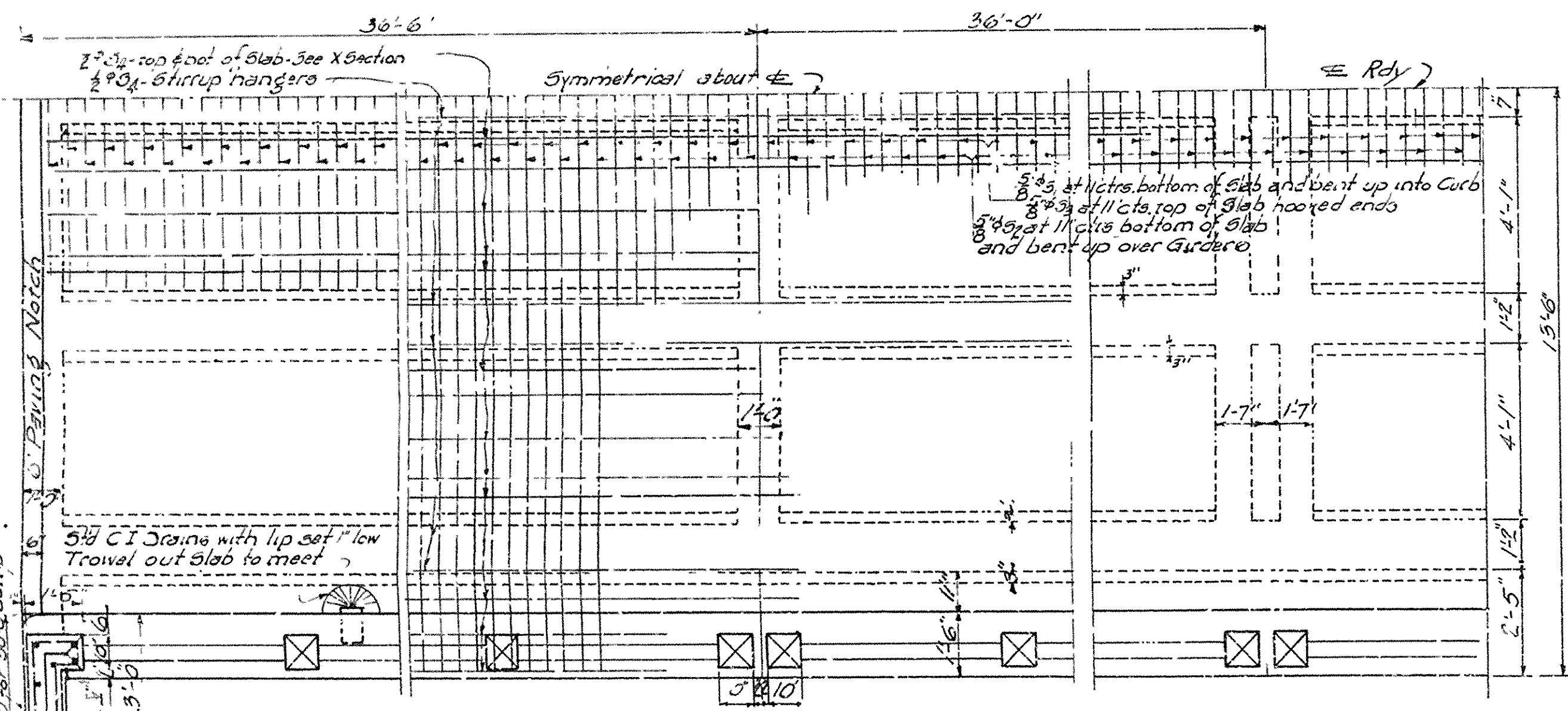
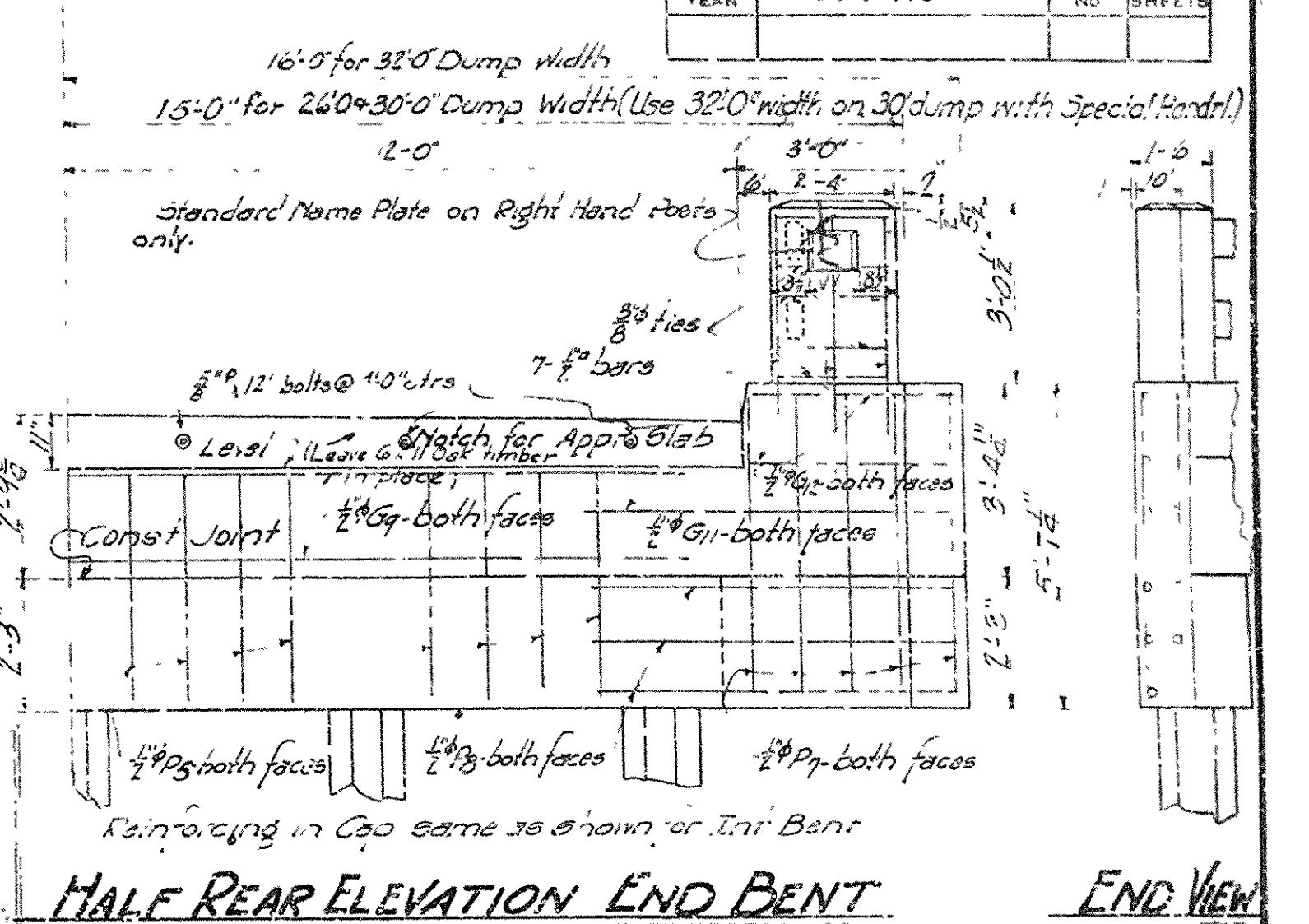
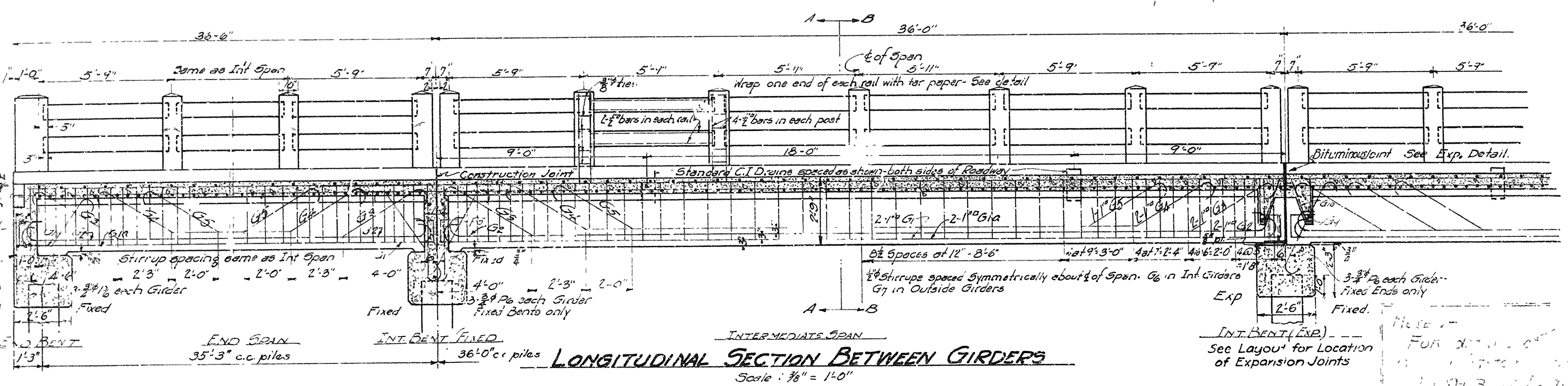
Drawn By: A Date: 1/2 in. = 1 ft.

Traced By: Date: Scale: 0 1 2 3

Checked By: Date: BRIDGE NO. DRAWING NO. 2447

BRIDGE ENGINEER





DETAILS OF STANDARD 36'-0" R.C. DECK GIRDER AND PILE BENTS

5 GIRDER TYPE - 5 PILE BENT
24'-0" CLEAR ROADWAY

ARKANSAS STATE HIGHWAY COMMISSION
LITTLE ROCK, ARK.

Drawn By: E.A.W. Date: 2/1/30
Traced By: J.E.W. Date: 2/1/30
Checked By: J.E.W. Date: 2/1/30
BRIDGE NO. DRAWING NO. 2329

BRIDGE ENGINEER