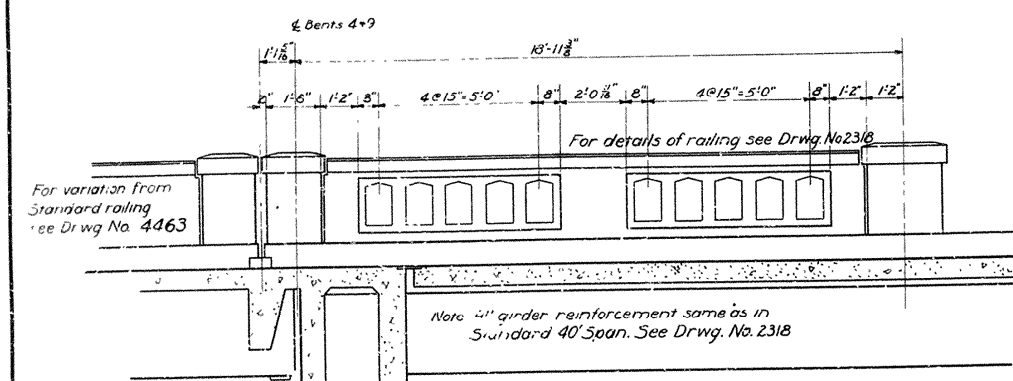
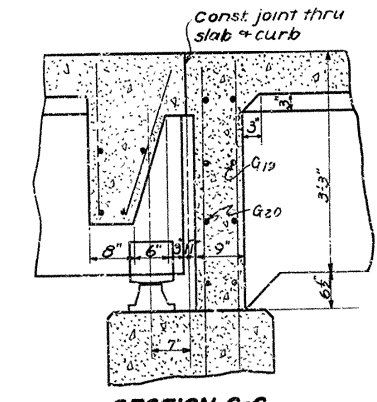
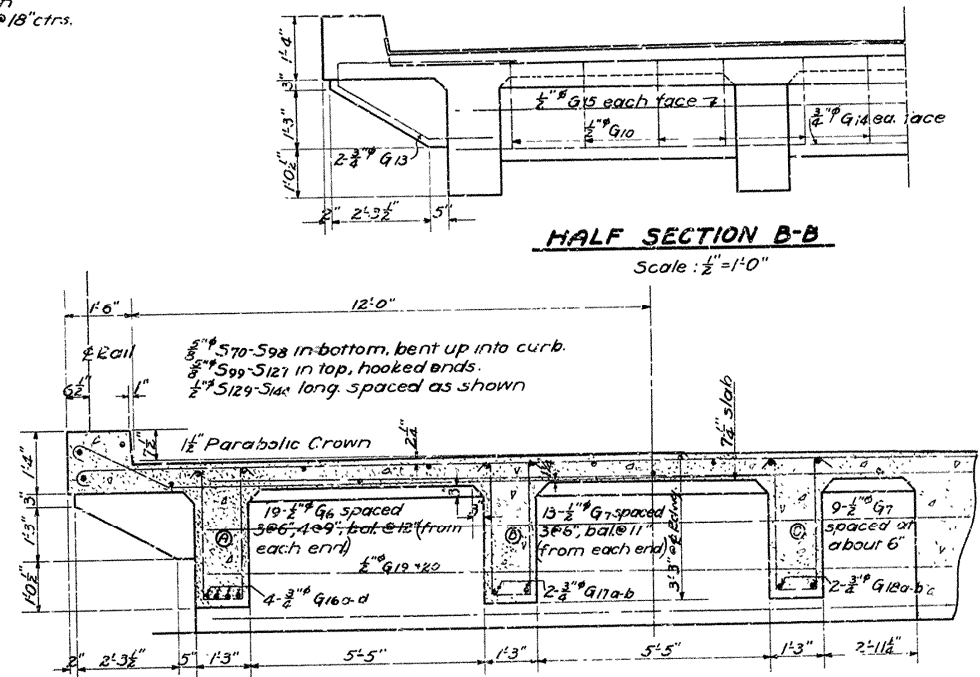
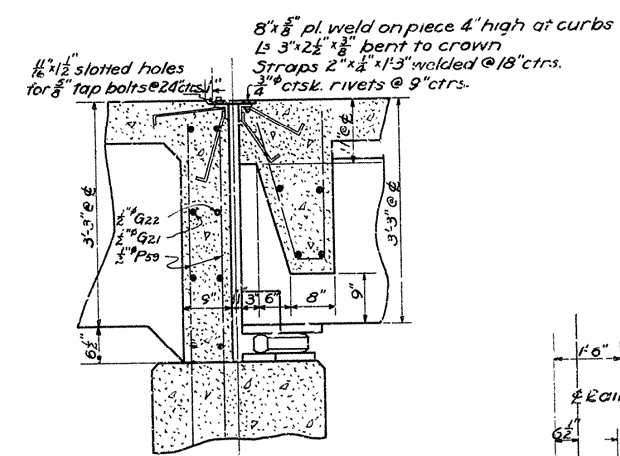
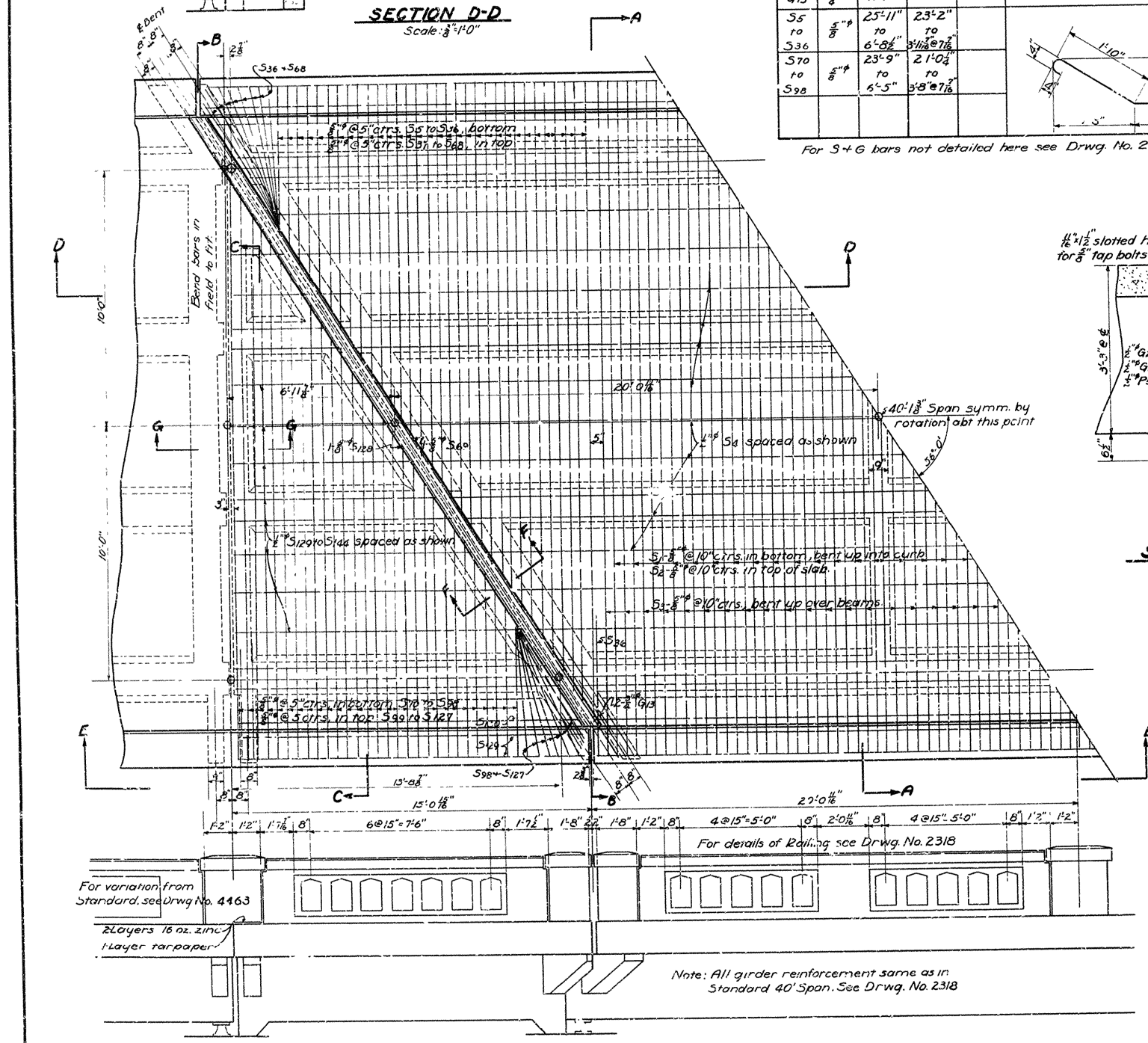
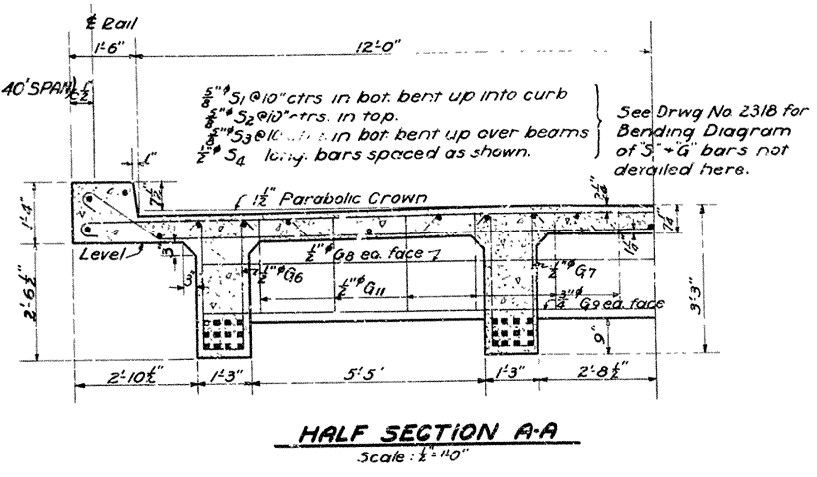
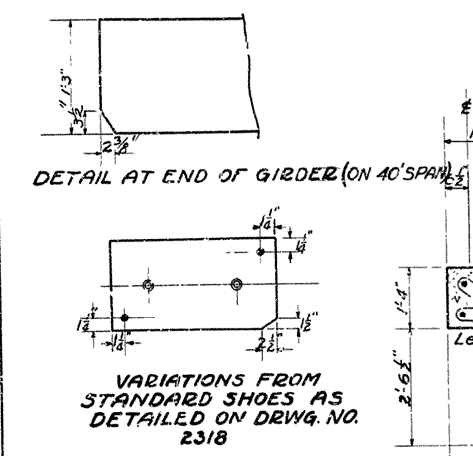


FED. ROAD DIST. NO.	STATE	U.S.V.P.G.C. PROJECT NO.	FISCAL YEAR	SHEET NO.	TOTAL SHEETS
8	ARK.	WPGM 127		13	41
STATE JOB NO. 7-204				11	30



MARK	SIZE	LENGTH	A	B	BENDING DIAGRAM
G16 a-d	3/4"	14'-7" av.	13'-1" av.	6"	
G17 a-b	3/4"	10'-1" av.	8'-7" av.	6"	
G18 a-b	3/4"	5'-7" av.	4'-1" av.	6"	
S37 to S68	5/8"	25'-8" to 6'-6"	24'-9 1/2" to 5'-6 1/2" @ 7 1/2"	3 1/2"	
S99 to S127	5/8"	23'-6" to 6'-2"	22'-7 3/4" to 5'-3 3/4" @ 7 1/2"	3 1/2"	
G13 a-b	3/4"	11'-1" to 25'-11"	23'-2" to 6'-8 1/2"	6"	
S5 to S36	5/8"	7'-0" to 6'-8 1/2"	7'-0" to 5'-1 1/2" @ 7 1/2"	3 1/2"	
S70 to S98	5/8"	23'-9" to 6'-5"	21'-0 1/4" to 5'-8" @ 7 1/2"	3 1/2"	

For S+G bars not detailed here see Drwg. No. 2318

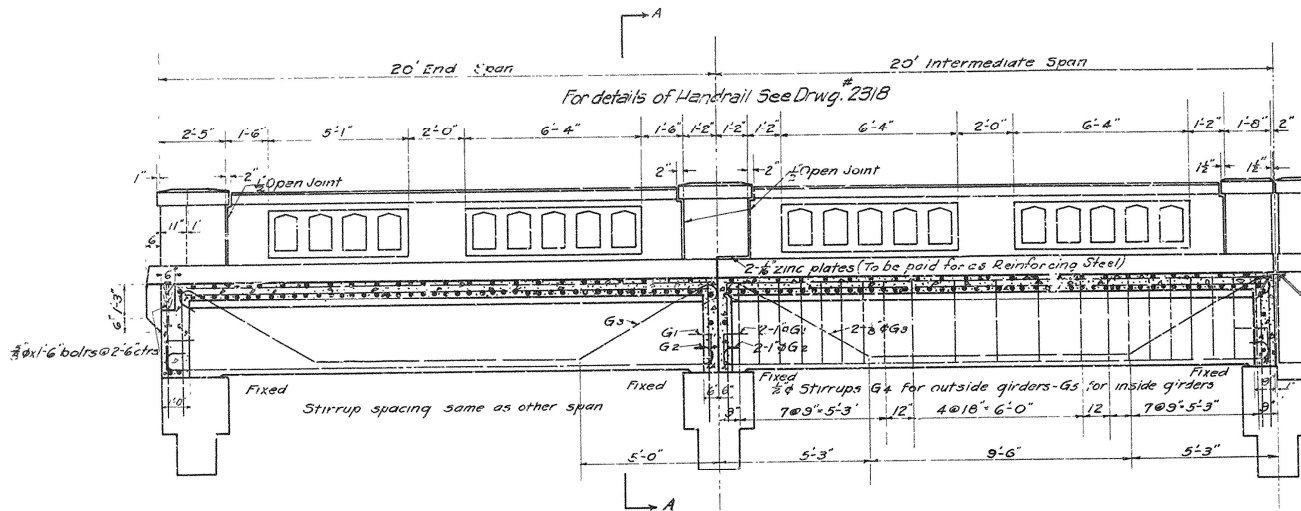


NOTE: For GENERAL NOTES see Drwg. No. 2318. Zinc plating to be paid for as reinforcing steel.

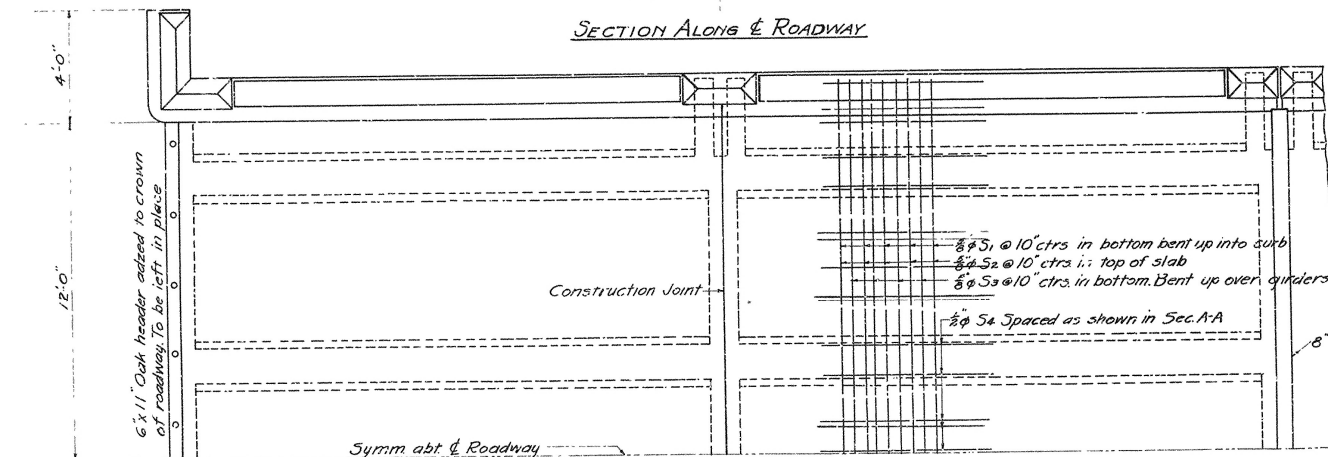
Revised for Checker's changes, 6-6-36. Rev. Detail at End of Girder (on 40' Span) L.P.C. 9-5-36.

DETAILS OF 6'-11 3/8" TRANSITION & 40'-1 3/8" R.C.D.G. SPANS OVERPASS OVER ST. L.S.W. RY.
M'NEIL-STEPHENS ROAD
COLUMBIA COUNTY
ROUTE 79 SEC. 2
ARKANSAS STATE HIGHWAY COMMISSION
LITTLE ROCK, ARK.
 Drawn By: H.N.D. Date: 5-5-36
 Traced By: C.W.B. Date: 5-8-36
 Checked By: E.A.W. Date: 5-22-36
 Bridge No. 1978 DRAWING NO. 4126

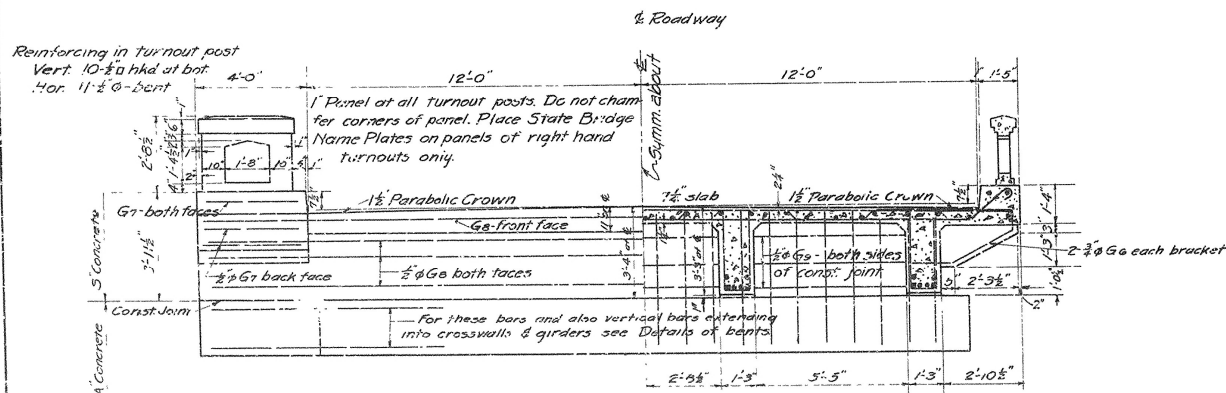
N.B. Lanner
 BRIDGE ENGINEER



SECTION ALONG & ROADWAY

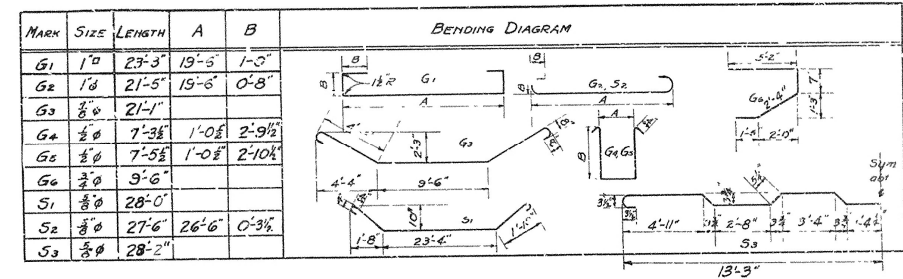


PARTIAL PLAN



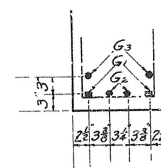
HALF REAR ELEVATION END BENT

HALF SECTION A-A



GENERAL NOTES:

All concrete to be Class "C".
All exposed corners to have 1/4" chamfer unless noted.
All dimensions of reinforcing steel are to centers of bars.
Oak header to be paid for as Class "C" concrete.
Oak header bolts to be paid for as reinforcing steel.
For general Notes see Drwg. No. 231B.



STEEL IN GIRDERS
AT MID-SPAN

To be used with Std. 40'-0" R.C.D. Girder
Drwg. No. 231B

Rev. 3-3-39 Add 11 S4 Bars
Rev. 4-29-39 G1 & G2 Bars - Lengths

DETAILS OF
STANDARD 20'-0" TOWER SPANS
4 GIRDER TYPE
24'-0" CLEAR ROADWAY

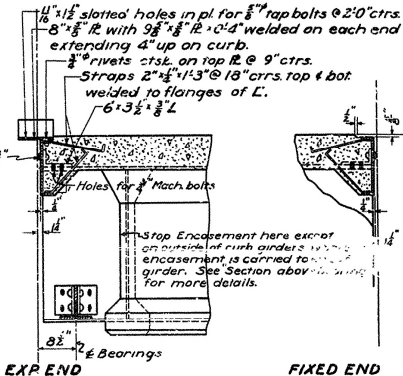
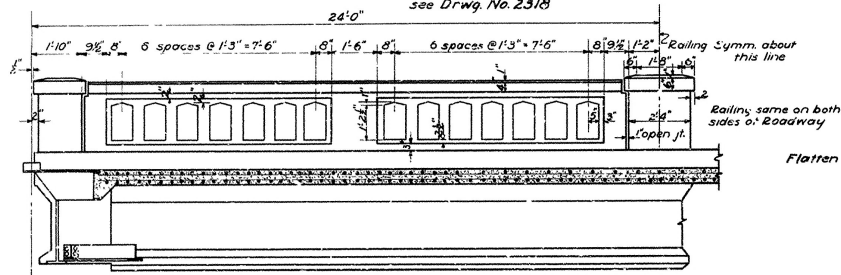
ARKANSAS STATE HIGHWAY COMMISSION
LITTLE ROCK, ARK.

Drawn by HND.
Traced by MWL.
Checked by E.A.W.
Date 10-5-39
Date 10-7-39
Date 10-23-39

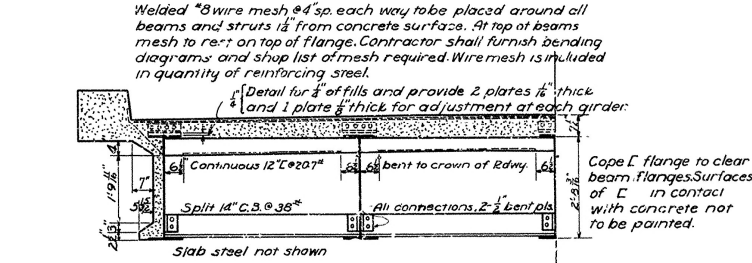
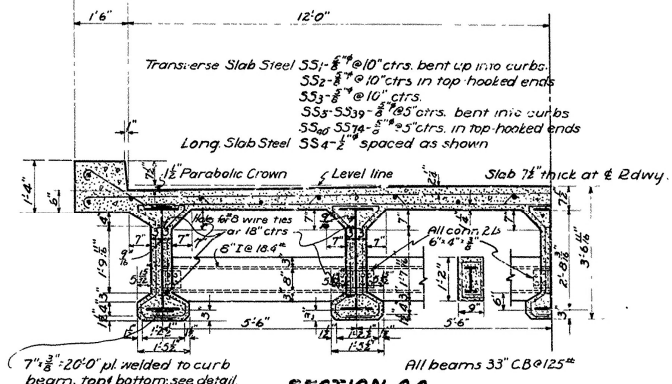
BRIDGE NO. DRWG. NO. 2322

N.B. Lamm
Bridge Engineer

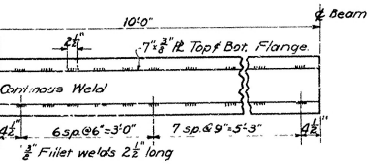
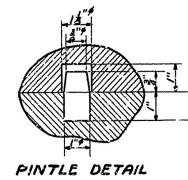
For details of railing
see Drwg. No. 2318



For details of railing
see Drwg. No. 2318



NOTE: Weight of shoes and rollers (both cast and structural steel) and weight of channels, cover plates, and fittings which make up roadway expansion devices is to be paid for at unit price bid for "Metal Bearing and Roadway Expansion Devices".
For other GENERAL NOTES see Drwg. No. 2318



Revised for Checker's changes, 6-6-36
Revised- Location Anchor Bolt Holes 8-29-36 L.H.C.

DETAILS OF
48'-0" ENCASED I-BEAM SPAN
OVERPASS OVER S.E. S.W. RY.
MCNEIL, ARK.
COLUMBIA, COUNTY
ROUTE 79 SEC. 2

ARKANSAS STATE HIGHWAY COMMISSION
LITTLE ROCK, ARK.

Drawn By: M.W.B. Date: 5-2-36
Traced By: C.W.B. Date: 5-6-36
Checked By: E.B.H. Date: 5-26-36
BRIDGE No. 1978 DRAWING No. 4464

TABLE SIZE LENGTH	BENDING DIAGRAMS
SS1 8" 28'-0"	
SS2 8" 27'-5"	
SS3 8" 28'-5"	
SS4 8" 28'-5"	
SS5 8" 28'-5"	
SS6 8" 28'-5"	
SS7 8" 28'-5"	

