



Bridge: M0161

Location: SH7 over Palmer  
Bayou

## **NSTM Procedure**

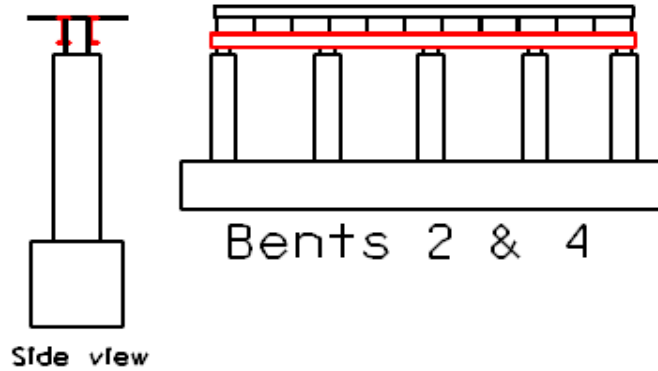
### **Bridge #M0161**

This bridge is a four span bridge with three interior bents, which are steel columns and steel caps. The Steel Caps are constructed of C-channel and I-Beam members being bolted and welded to the back and ahead sides of H-beam columns.

The NSTM components of this structure consist of the bottom flange and webs of the Steel Caps between the columns and the top flange and webs of the Steel Caps over the columns. Tension members are inspected hands on and visually. Tools required may include extension ladder, ultrasound, die penetrate, wire brush, chipping hammer and rubber boots. Traffic control is not required. Tension members are accessed from the stream bed below the surface.

## Br. #M016INSTM Member Steel Caps

Beams are  
Continuous



Beams are  
Noncontinuous

