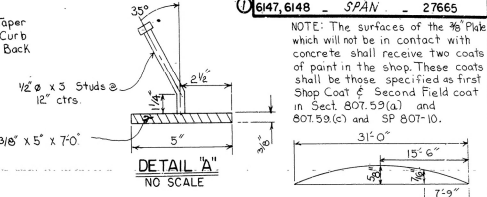


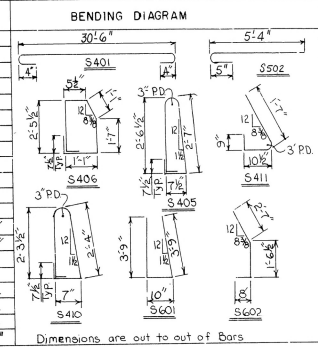
SECTION A-A  
SCALE: 1" = 1'-0"

SECTION B-B  
SCALE: 1" = 1'-0"

BAR LIST\_EA.SPAN

| MARK | NO. REQ'D |      | LENGTH | PIN DIA. |
|------|-----------|------|--------|----------|
|      | END       | INT. |        |          |
| S401 | 25        | 25   | 3'-6"  | 3"       |
| S402 | 23        | 23   | 3'-0"  | 5"       |
| S403 | 16        | 24   | 9'-10" | Str.     |
| S404 | 24        | 24   | 10'-0" | Str.     |
| S405 | 44        | 48   | 6'-10" | 2"       |
| S406 | 44        | 48   | 7'-6"  | 2"       |
| S407 | 28        | 28   | 3'-3"  | 3"       |
| S501 | 31        | 31   | 30'-6" | Str.     |
| S409 | 2         | —    | 9'-5"  | Str.     |
| S410 | 42        | 42   | 6'-4"  | 2"       |
| S411 | 42        | 42   | 3'-2"  | 2"       |
| S412 | 10        | —    | 0'-11" | —        |
| S601 | 4         | —    | 8'-1"  | 3 3/4"   |
| S602 | 4         | —    | 4'-7"  | 3 3/4"   |
| S603 | 20        | 30   | 9'-10" | Str.     |
| S604 | 2         | —    | 9'-5"  | Str.     |
| S605 | 8         | —    | 10'-4" | Str.     |
| S901 | 48        | 56   | 30'-8" | Str.     |
| S902 | 8         | —    | 31'-2" | Str.     |
| S502 | 20        | 20   | 51'-1" | 3 3/4"   |

D.L. CAMBER DIAGRAM



GENERAL NOTES

ALL CONCRETE TO BE CLASS S(AE). ALL EXPOSED CORNERS TO BE CHAMFERED 3/4" UNLESS OTHERWISE NOTED  
REINFORCING STEEL TO BE ASTM A615 OR A617, GR. 60.

BAR SUPPORTS FOR REINFORCING BARS WILL NOT BE PAID FOR DIRECTLY, BUT WILL BE CONSIDERED SUBSIDIARY TO THE ITEM "REINFORCING STEEL." SHOP LISTS AND BENDING DIAGRAMS OF REINFORCING STEEL, INCLUDING WIRE SUPPORTS, MAY BE SUBMITTED FOR APPROVAL BEFORE FABRICATION IS BEGUN.

ROOFING FELT, BITUMINOUS FELT, PREFORMED JOINT, STRUCTURAL STEEL, AND POURED SYNTHETIC POLYMER JOINTS SHALL BE MEASURED AND PAID FOR AS CLASS (IAC) CONCRETE.

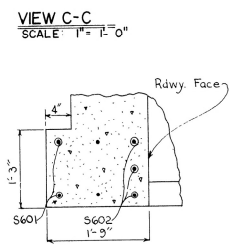
SPECIFICATIONS: ARKANSAS STATE HIGHWAY COMMISSION STANDARD SPECIFICATIONS FOR HIGHWAY CONSTRUCTION, EDITION OF 1978 AND APPLICABLE SPECIAL PROVISIONS.

DESIGN SPECIFICATIONS: AASHTO 1983 WITH CURRENT INTERIM SPECIFICATIONS.

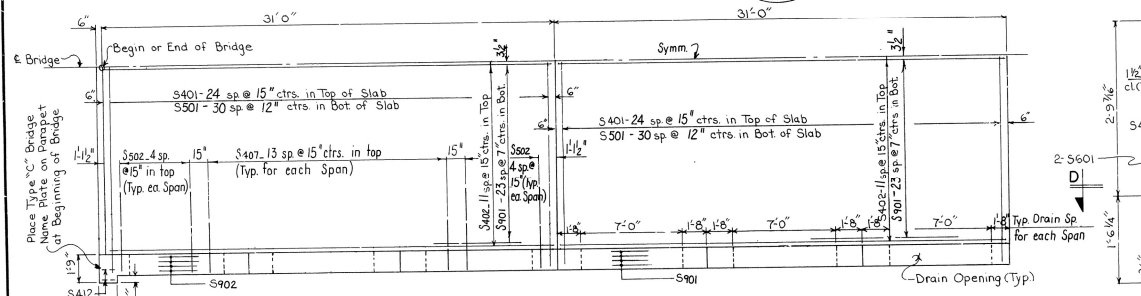
LOAD DISTRIBUTION TO SLAB: DEAD LOAD - 265 PSF; LIVE LOAD - 0.172 WHEELS/FT. OF WIDTH PLUS 30% IMPACT.

COMPRESSIVE STRENGTH OF CLASS S(AE) CONCRETE,  $f'_c = 3,500$  PSI  
YIELD STRENGTH OF REINFORCEMENT = 60,000 PSI

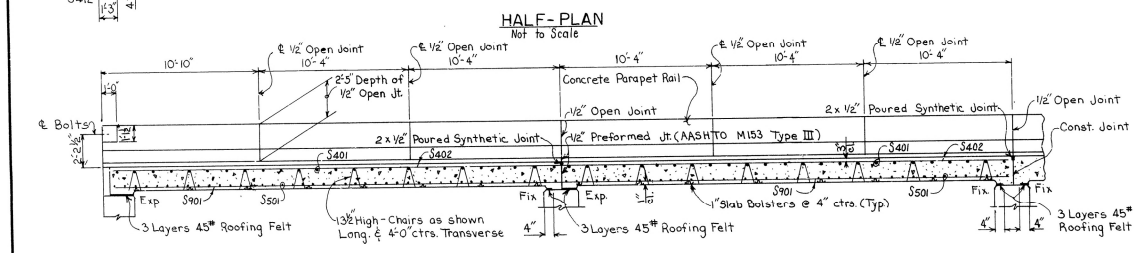
YIELD STRENGTH OF REINFORCEMENT = 60,000 PSI  
LOAD FACTOR USED FOR DESIGN OF SLAB.



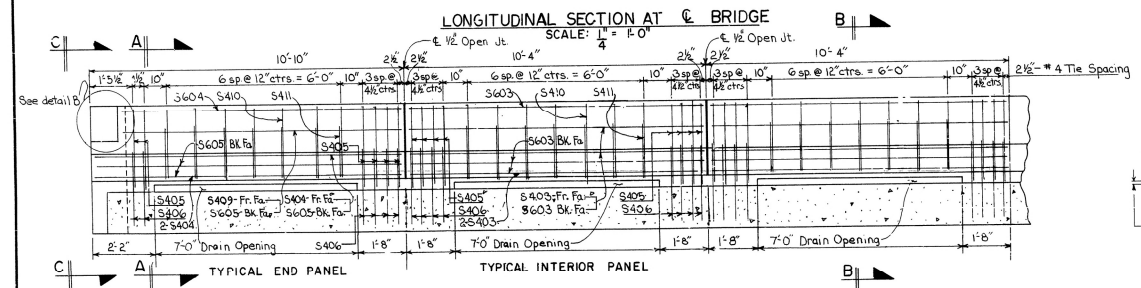
SECTION D-D  
SCALE: 1" = 1'-0"



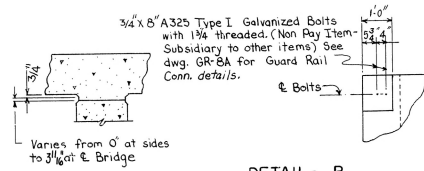
HALF-PLAN  
Not to Scale



LONGITUDINAL SECTION AT C BRIDGE  
SCALE: 1" = 1'-0"



LONGITUDINAL SECTION AT CURB  
SCALE: 1/2" = 1'-0"



RISER DETAIL  
NO SCALE

DETAIL - B

| SPAN | REINFORCING | CLASS 5<br>CONCRETE | STRUCTURAL<br>STEEL |
|------|-------------|---------------------|---------------------|
| End  | 9411 lbs.   | 58.05 Cu yds        | 282 lbs             |
| Int. | 9333 lb     | 57.60 Cu yds        | 282 lbs             |

ALTERNATE NO. 1

DETAILS OF STANDARD  
31'-0" R.C. SLAB SPAN  
28 1/2' 0" CL. RDWY.-CONC. PARAPET RAIL

ROUTE 273 SEC. 1  
ARKANSAS STATE HIGHWAY COMMISSION

DRAWN BY: MRJ DATE: 4 JUNE 84  
MJC 6-25-84 SCALE: AS SHOWN

DRAWN BY: MRJ DATE: 4 JUNE 84  
CHECKED BY: MJC DATE: 6-25-84 SCALE: AS SHOWN  
DESIGNED BY: Std. DATE: \_\_\_\_\_

BRIDGE NO. 6147, 6148      DRAWING NO. 27665