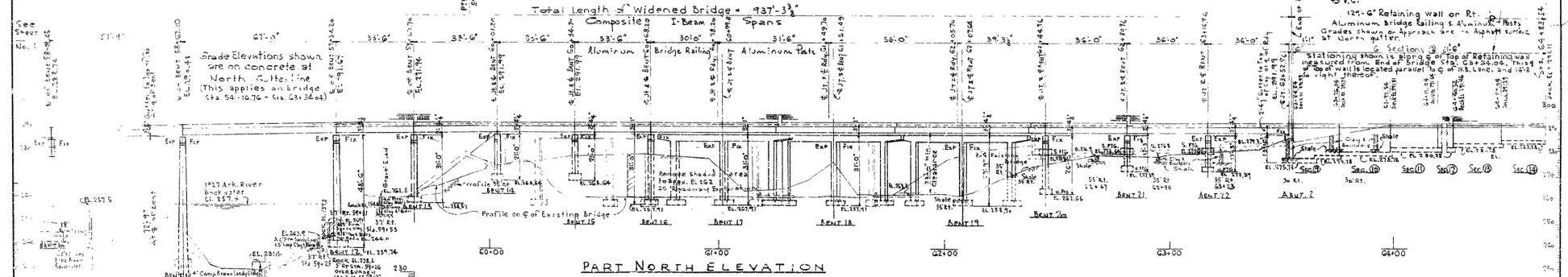
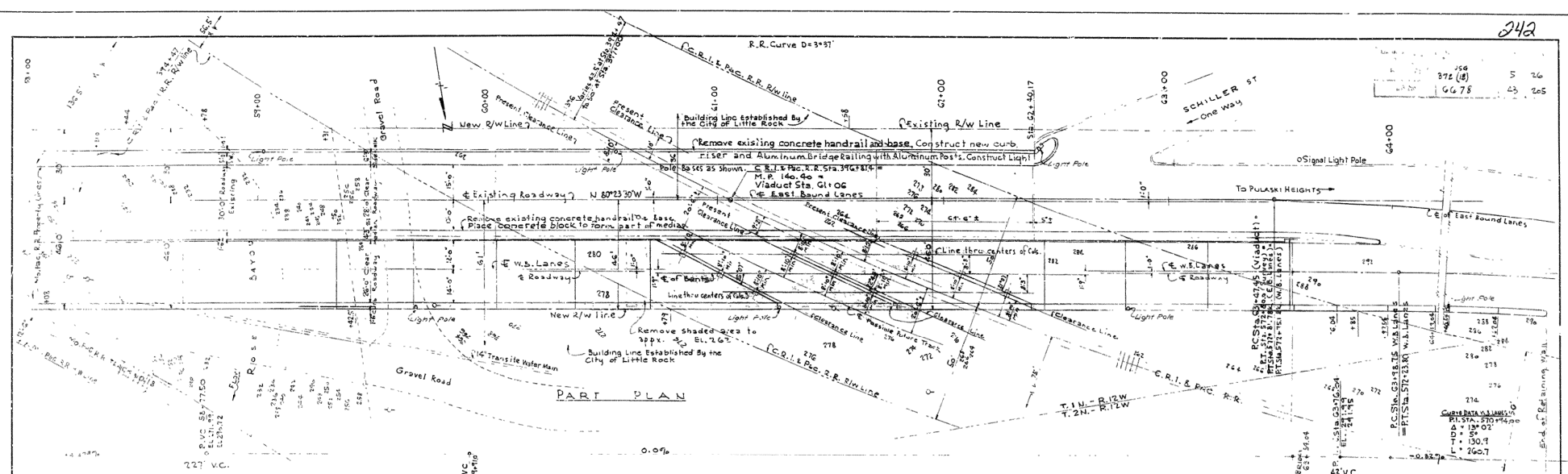


LINCOLN AVENUE VIADUCT WIDENING
LA HARPE BLVD.-LITTLE ROCK WEST CITY LIMITS
IN LITTLE ROCK, ARK.
PULASKI COUNTY
ROUTE 10 SEC. 8
ARKANSAS STATE HIGHWAY COMMISSION
LITTLE ROCK, ARK.

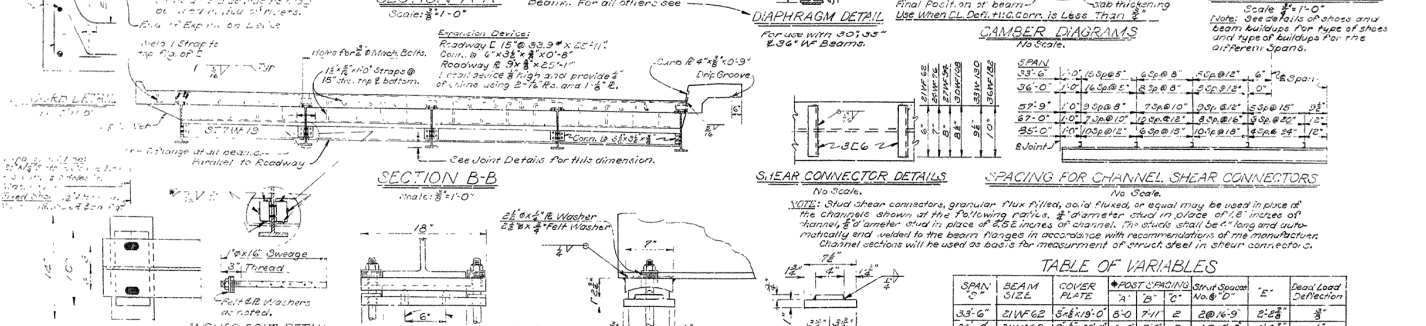
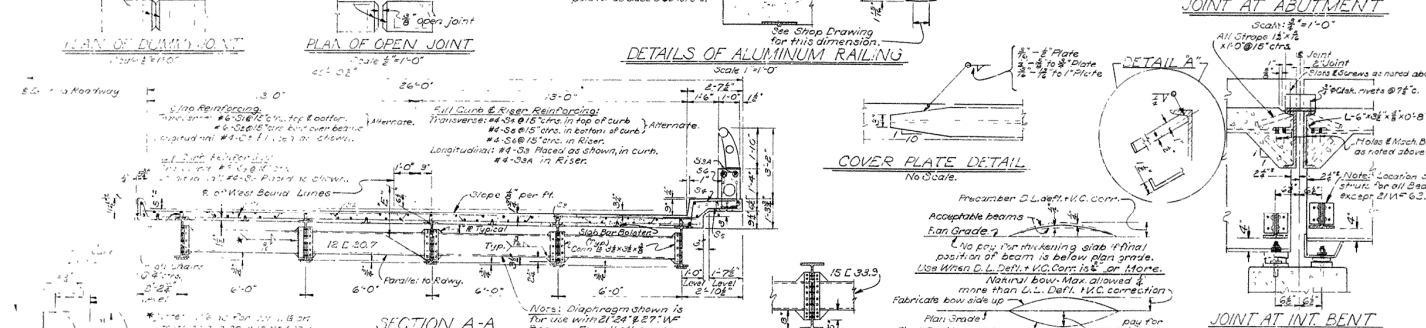
DRAWN BY: W.C.N. DATE: 7-3-59
 TRACED BY: E.A.W. DATE: 3-30-60 SCALE: 1" = 20'-0"
 CHECKED BY: J.N.H. DATE: 8-9-60
 BRIDGE NO. 1538-A DRAWING NO 11099



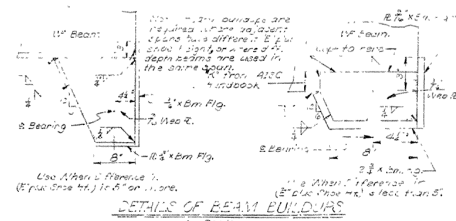
- For details of East Approach (Wall Sections ①, ② incl) See Drwg. 11101, 11103, 11110
- " of Abutment No. 1 See Drwg. 11102
- " of Bents 1 thru 6, 13, 15, 16, 20, 21, 22 See Drwg. 11104
- " of Bents No. 6, 10, 14 See Drwg. 11105
- " of Bents No. 11 & 12 See Drwg. 11106
- " of Bent No. 17, 18, 19 See Drwg. 11107
- " of Abutment No. 2 See Drwg. 11108
- " of West Approach (Wall Sections ③, ④, ⑤, ⑥, ⑦, ⑧) See Drwg. 11101, 11109, 11110
- General details of T-Beam Spans See Drwg. 11111
- Supplemental details of 3rd of Span See Drwg. 11112
- " " of 5th " See Drwg. 11113
- " " of 6th " See Drwg. 11114
- " " of 3rd " See Drwg. 11115
- details of Remediating Existing Structures See Drwg. 11116 & 11117
- " of Type C Bridge Nade Piers See Drwg. 2389A
- Embankment Construction at Bridge Ends and Backfill At Structures See Drwg. 1888
- Basis for Computing Excavation for Structures See Drwg. 1291
- Standard Barricade, Warning & Signs See Drwg. 1896

B.M.	El. 292.62
Top of Curb	15' 4" of
Sta. 62 + 39.4	

SHEET 2 of 2
LAYOUT OF
LINCOLN AVENUE VIADUCT WIDENING
LA HARPE BLVD. LITTLE ROCK WEST CITY LIMITS
IN LITTLE ROCK, ARK.
PULASKI COUNTY
ROUTE 10 SEC. 8
ARKANSAS STATE HIGHWAY COMMISSION
LITTLE ROCK, ARK.
DRAWN BY: WCH DATE: 7-10-51
BY: EAW C. E. 4-1-60 SCALE: 1" = 20'-0"
CHECKED BY: WCH DATE: 3-3-60
BRIDGE NO. 1538-A DRAWING NO. 11100

[illegible]

SPAN "C"	BEAM SIZE	COVER PLATE	POST SPACING "S"	STIFF SPACING "S"	"E"	Dead Load Deflection
33'-6"	21W65	5/8x18.0	6'-0"	7'-0"	2-10/16"	3"
36'-0"	21W65	5/8x18.0	6'-0"	7'-0"	2-10/16"	4"
57'-9"	30W105	5/8x27.0	8'-0"	8'-0"	3-10/16"	1"
67'-0"	36W130	5/8x32.0	8'-0"	8'-0"	4-10/16"	2-1/8"
65'-0"	36W132	1/2x32.0	8'-0"	8'-0"	5-17/16"	1 1/8" Δ



PULASKI COUNTY
ROUTE 10 SEC. 8
ARKANSAS STATE HIGHWAY COMMISSION

TYPE A FIXED OR EXP. SHOE		TYPE B (LUBRICATING) FIXED OR EXP. SHOE		SELECTED MOUNTING PLATE					
Size: 18" x 10" Use on all spans except 57'-9" 6'-0" and 65'-6"		Size: 18" x 10" Use on 67'-9", 67'-0" and 85'-0" spans.		NOTE: To adjust for grooves, increase the thickness of fixed bearing plate plates on the groove side of the intermediate bearing to the following: Bents 1-3, 11, 2; Bent 10, 14, 18; Bent 12, 1, 2.					
S ₁	#4	27	29	17	35	65	5'-1"	18"	
S ₂	#6	65	68	64	54	68	4'-2"	18"	
S ₃	#6	27	29	67	53	65	5'-0"	18"	
S ₄	#3	27	29	17	35	69	2'-4"	18"	

LITTLE ROCK, ARK.

DRAWN BY: EP DATE: 5-12-60

TRACED BY: _____ DATE: _____

CHECKED BY: JEM DATE: 6-6-60

SCALE: As Shown

L. P. Hixson
BRIDGE ENGINEER

BRIDGE NO. 1538-A

DRAWING NO. 1111.