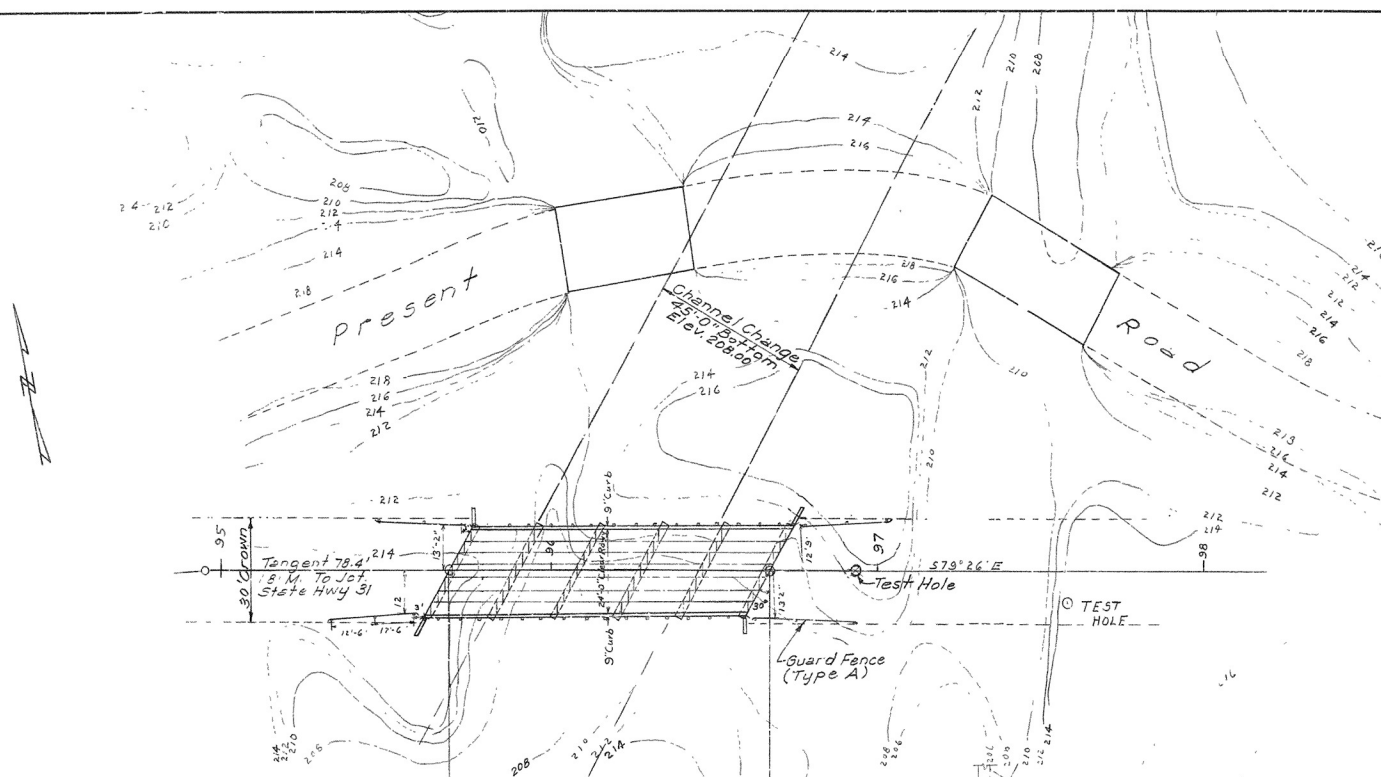


R/W DATA:
20' RT OF E
20' LT OF E

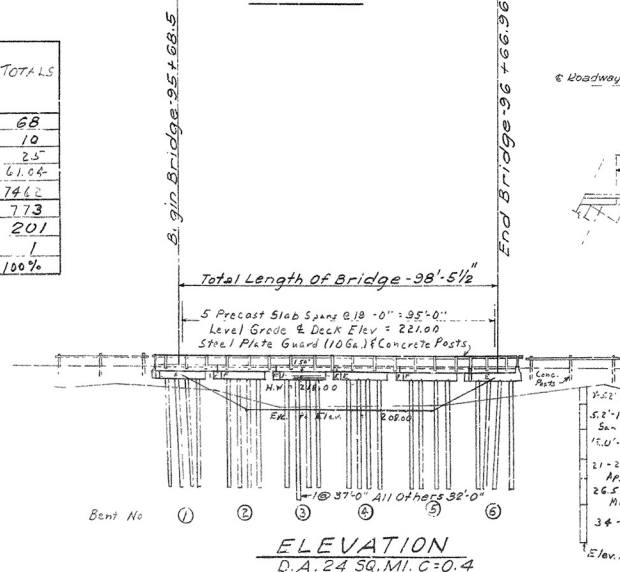


PLAN

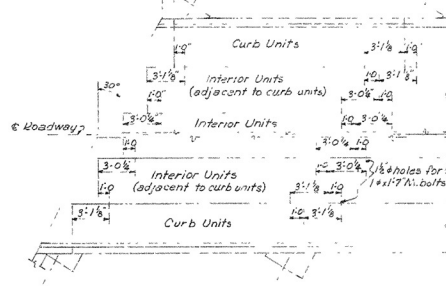
CODE 10 X020
C-ELU-E OF BRIDGE QUANTITIES

UNIT	UNIT OF BRIDGE			TOTALS
	2	4	5-18'0"	
END INT PRECAST BENTS	68			68
INT PRECAST BENTS		10		10
INT PRECAST BENTS		25		25
INT PRECAST BENTS	24.81	34.23		61.04
INT PRECAST BENTS	22.64	46.58		146.2
INT PRECAST BENTS	22.6	51.7		77.3
INT PRECAST BENTS		201		201
INT PRECAST BENTS	1			1
INT PRECAST BENTS				100%

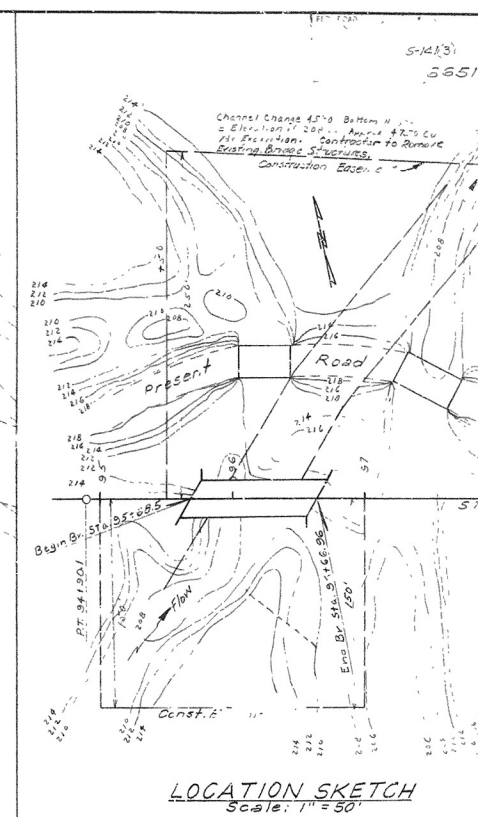
Note: All piles to be 16" dia.
Precast Concrete Piles
Batter Piles to be 24" dia. at Bent 1 & 5
All piles in End Bents to be driven
at 1" embedment in 12" pile cap.



ELEVATION
D.A. 24 SQ. MI. C=0.4



30° SKEW
DIAGRAM SHOWING LOCATION
OF BOLTS JOINING UNITS
FOR SKEWED SPANS



LOCATION SKETCH
Scale: 1" = 50'

GENERAL NOTES
B.M. in foot of 24" dia. 110' left of Sta. 34+0.0
For Details of Superstructure see Dwg. 10-530.0
For Details of Substructure see Dwg. 10-530.0
Lengths of piling shown are assumed for estimating quantities and
lengths to be determined in the field. Drive and test piles in bent 1 & 5
All piling to be 16" dia. minimum bearing of 32 tons per pile
Loading 145' A.H.S. H-10 1958
Stresses: Class 5 Concrete (4-10)
Reinforcing Steel
16" dia. H-10

LAYOUT OF BRIDGE
OVER RIGGON ROOST
HICKORY PLAINS - JCT. 4
LONGKE COUNTY
ROUTE 33 SEC.

ARKANSAS STATE HIGHWAY COM.
LITTLE ROCK, ARK.

DRAWN BY: DATE: 11/1/58
TRACED BY: DATE:
CHECKED BY: DATE:
BRIDGE NO. 3170 DRAWING