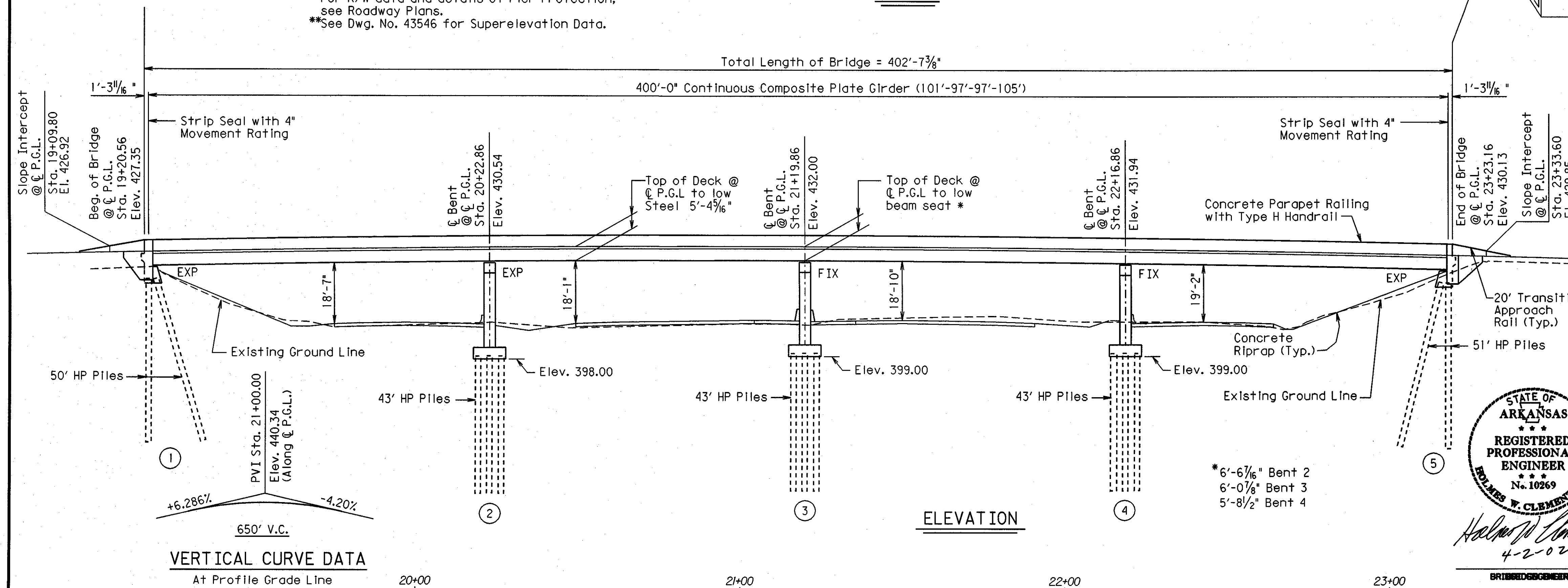
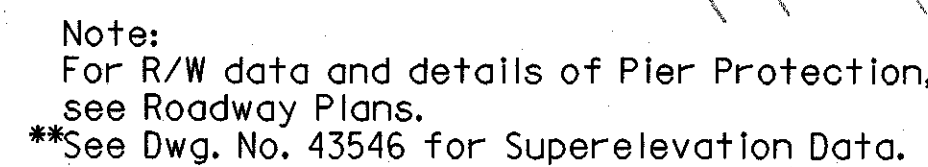


GENERAL NOTES

METHOD OF DESIGN: Load Factor

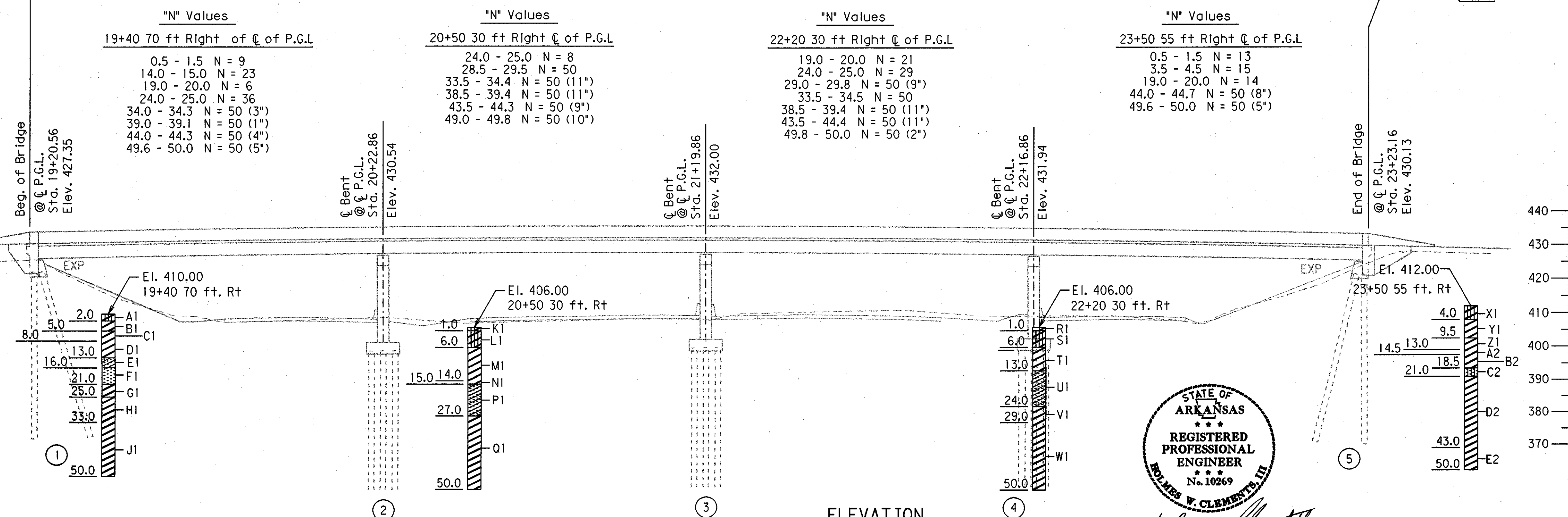
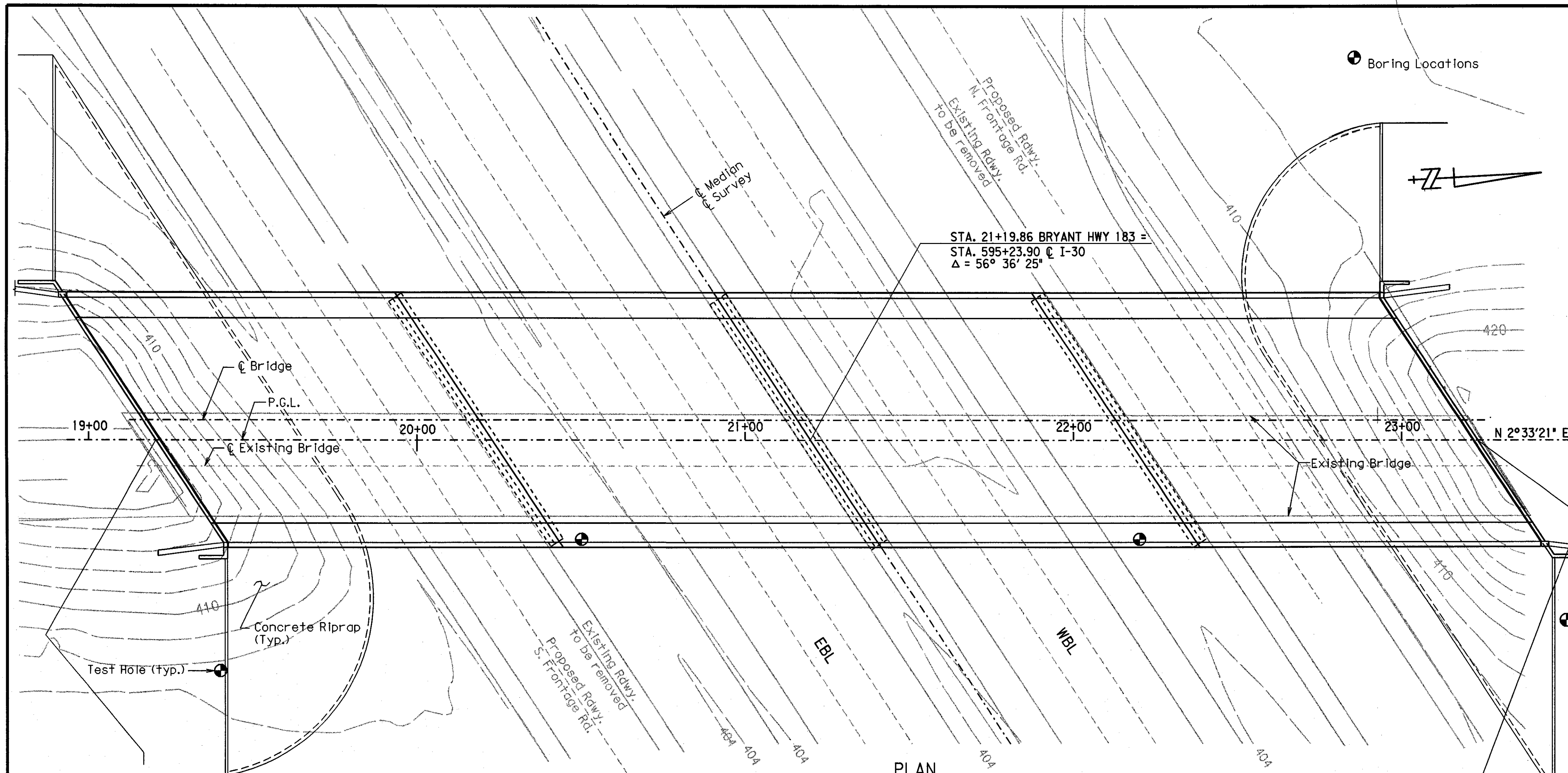
DRAWN BY: CAB DATE: 4-1-02 FILENAME: BB60121X1.L1
 CHECKED BY: AS/HWC DATE: 4-1-02 SCALE: 1"=20'
 DESIGNED BY: RTP DATE: 9-10-01
 BRIDGE NO. 06910 DRAWING NO. 43544



DATE REVISED	DATE FILMED	DATE REVISED	DATE FILMED	FED. ROAD DIST. NO.	STATE	FED. AID PROJ. NO.	SHEET NO.	TOTAL SHEETS
				6	ARK.			
				JOB NO.		B60121	186	406
						06910 Boring Layout	43545	

BORING LEGEND

- A1 - Stiff gray and tan silty clay, slightly sandy
- B1 - Stiff gray and red clay w/occasional fine to coarse gravel
- C1 - Stiff tan and olive gray clay w/ferrous nodules and trace fine gravel
- D1 - Cl, blocky below 8 ft
- E1 - Medium dense tan and yellowish brown clayey fine sand w/numerous ferrous nodules and trace fine gravel
- F1 - Loose tan and brown fine sand w/ferrous staining
- G1 - Very stiff tan and gray fine sandy clay w/shell fragments
- H1 - Very stiff dark gray fine sandy clay w/occasional clayey fine sand pockets and shell fragments
- J1 - H1, hard below 33 ft
- K1 - Stiff dark brown silty clay w/some organics and rootlets
- L1 - Stiff tan and gray silty clay w/rootlets, ferrous staining and occasional red fine sand layers
- M1 - Stiff to very stiff olive gray and yellowish brown clay w/ferrous stains, blocky
- N1 - M1, less blocky below 14 ft
- P1 - Loose brown and yellowish brown clayey fine sand w/ferrous nodules and some fine sandy clay seams and layers
- Q1 - Very stiff to hard dark gray fine sandy clay w/numerous fine sand partings, calcareous
- R1 - Soft brown fine sandy clay w/gravel
- S1 - Stiff gray and tan silty clay w/ferrous stains, slightly blocky
- T1 - Very stiff brownish gray clay w/ferrous stains, slightly blocky
- U1 - Medium dense dark brown and yellowish brown clayey fine sand and some fine sandy clay seams and layers w/numerous ferrous nodules
- V1 - Very stiff dark gray fine sandy clay w/numerous fine sand seams and partings and numerous shell fragments
- W1 - V1, hard below 29 ft
- X1 - Stiff brown and gray silty clay w/some fine sand and fine gravel (fill)
- Y1 - Firm to stiff light gray and red clay w/some fine sand and occasional gravel
- Z1 - Stiff gray clay w/numerous ferrous nodules, blocky
- A2 - Z1, calcareous layer at 13 to 14 ft
- B2 - Z1, w/ferrous nodules below 14.5 ft
- C2 - Medium dense dark brown and dark gray silty fine sand
- D2 - Very stiff dark gray and gray fine sandy clay w/numerous fine sand pockets, calcareous nodules and shell fragments
- E2 - D2, hard below 43 ft



BORING INFORMATION

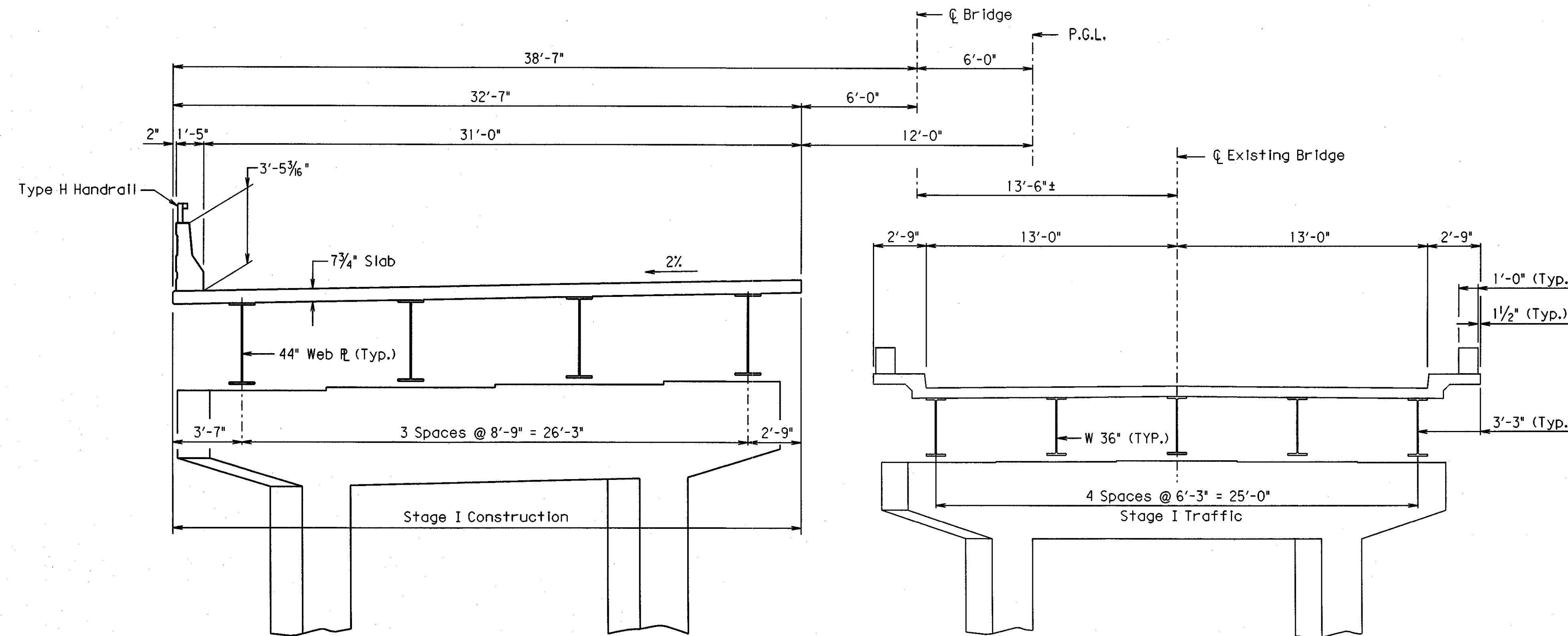
STATE HWY 183 OVER I-30
WEST OF ALCOA RD-
WEST OF PULASKI CO. LINE
SALINE COUNTY

ROUTE 30 SEC. 22
ARKANSAS STATE HIGHWAY COMMISSION
LITTLE ROCK, ARK.

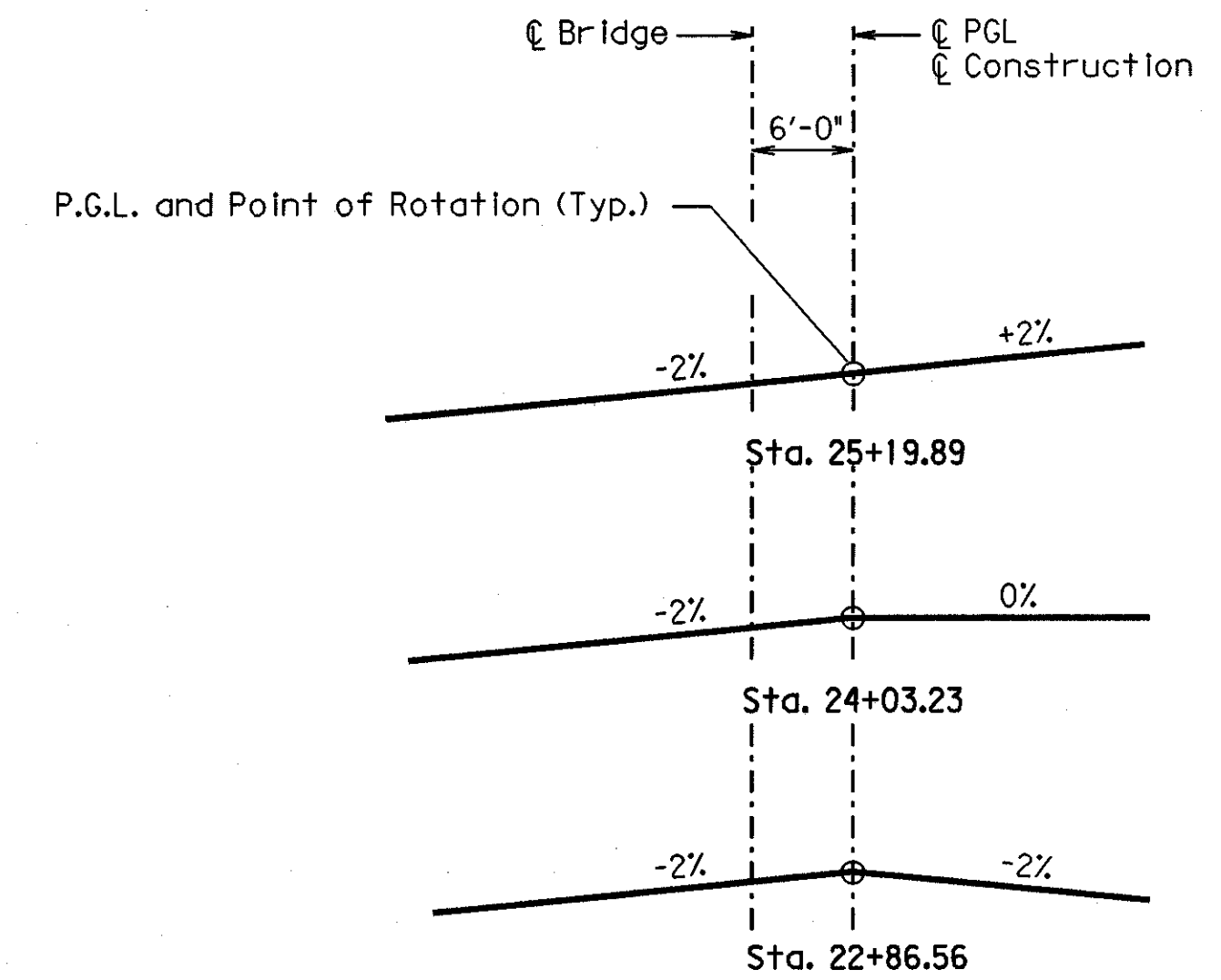
DRAWN BY: CAB DATE: 4-1-02 FILENAME: BB60121X1.bor
CHECKED BY: AS/HWC DATE: 4-1-02 SCALE: 1"=20'
DESIGNED BY: RTP DATE: 9-29-01
BRIDGE NO. 06910 DRAWING NO. 43545



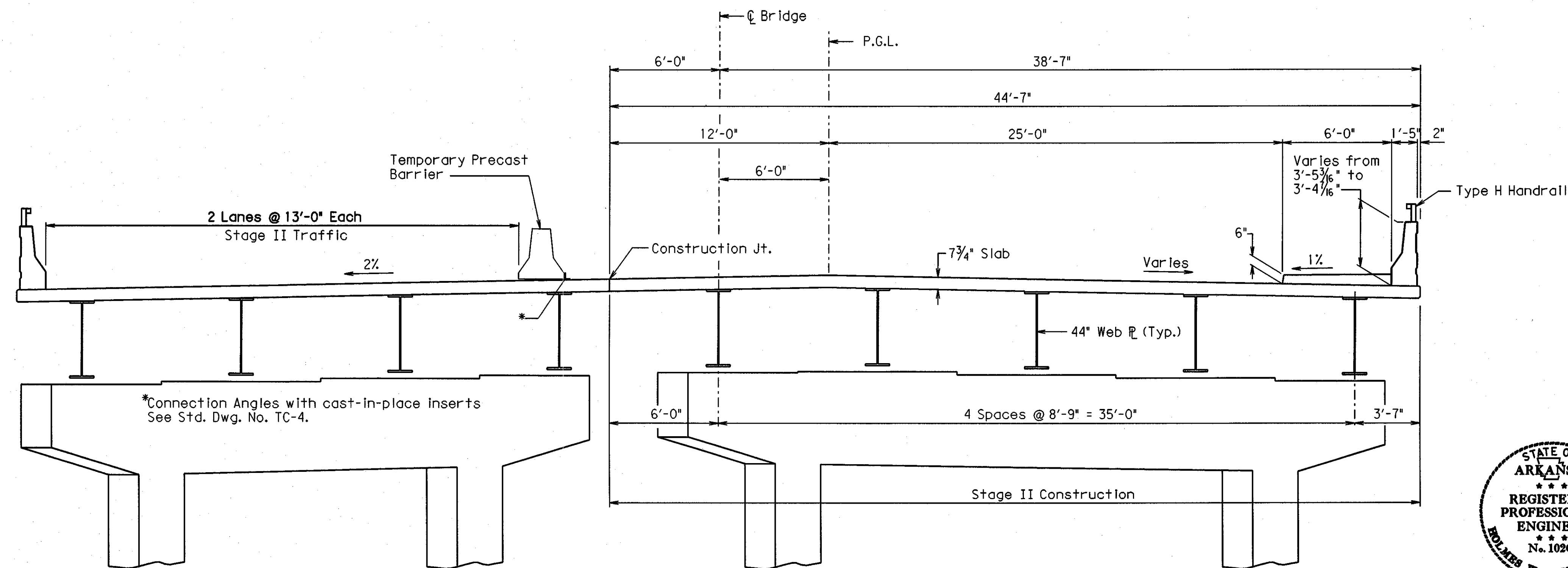
DATE REVISED	DATE FILMED	DATE REVISED	DATE FILMED	FED. ROAD DIST. NO.	STATE	FED. AID PROJ. NO.	SHEET NO.	TOTAL SHEETS
				6	ARK.			
				JOB NO.		B60121	181	406
06910 Stage Construction 43546								



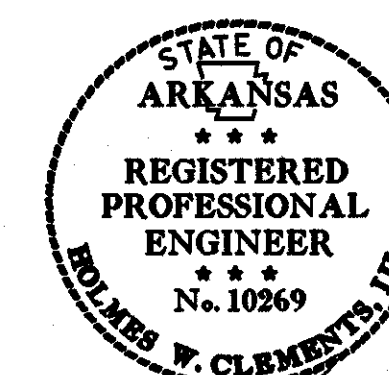
STAGE I



SUPERELEVATION TRANSITION DATA
NTS



STAGE II

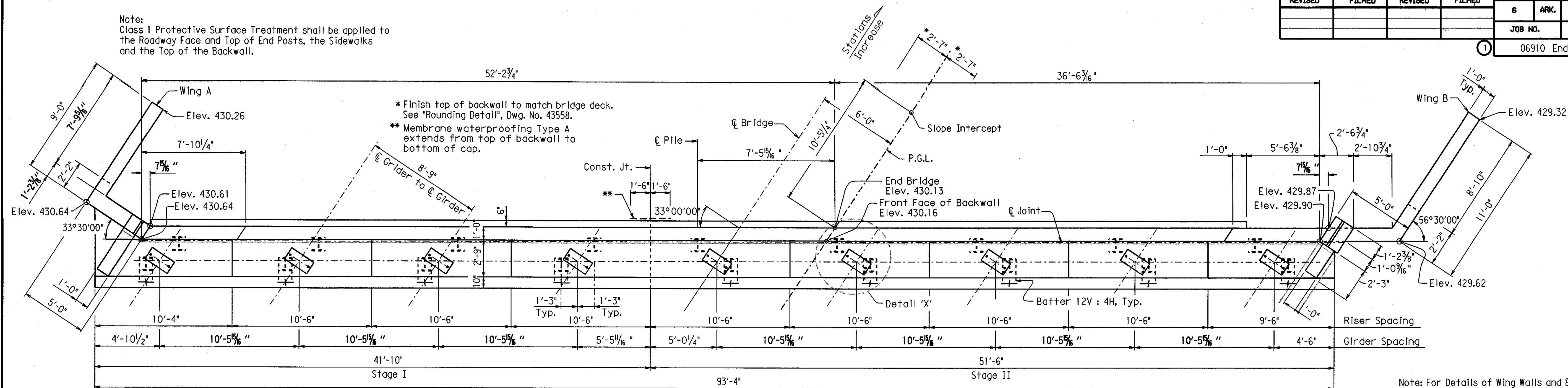


BRIDGE ENGINEER
3-19-02

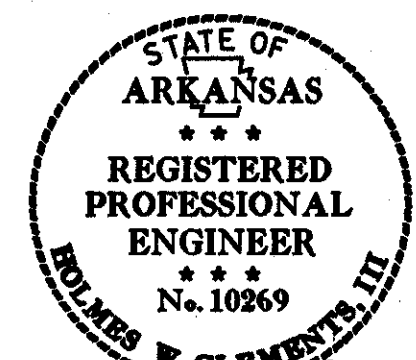
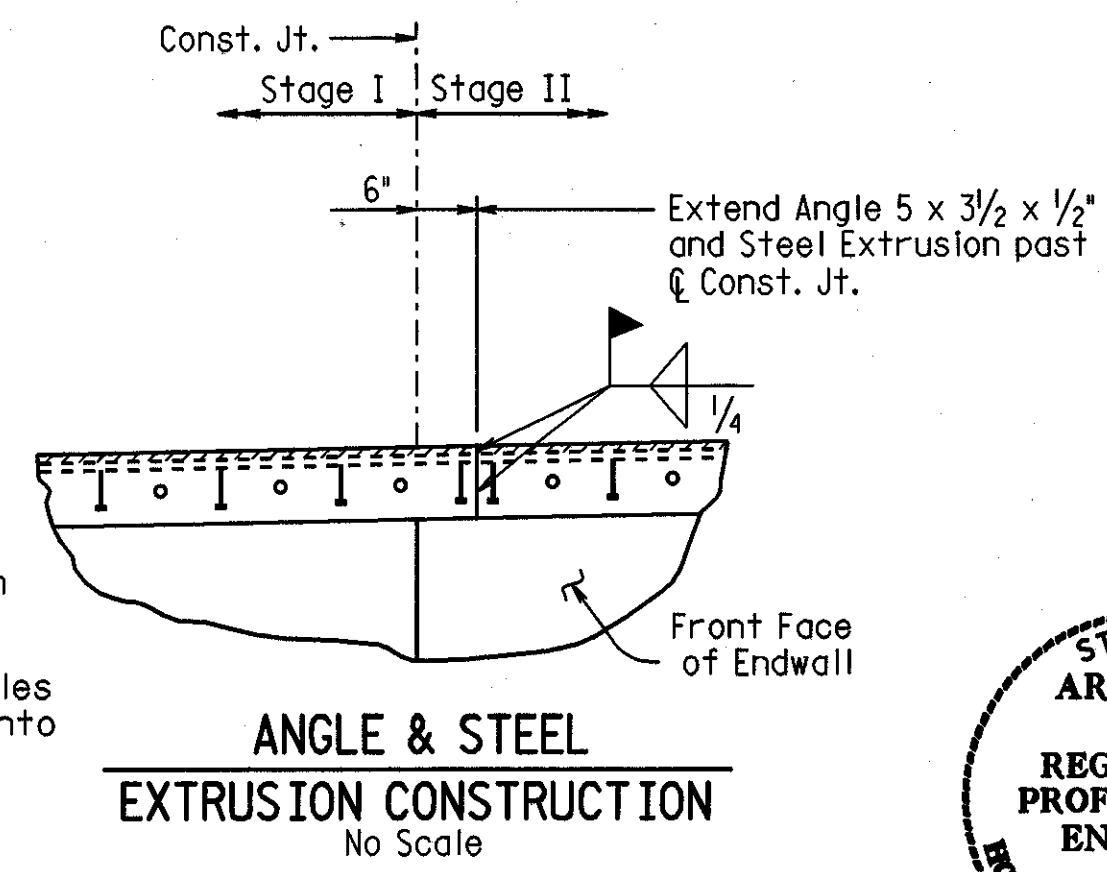
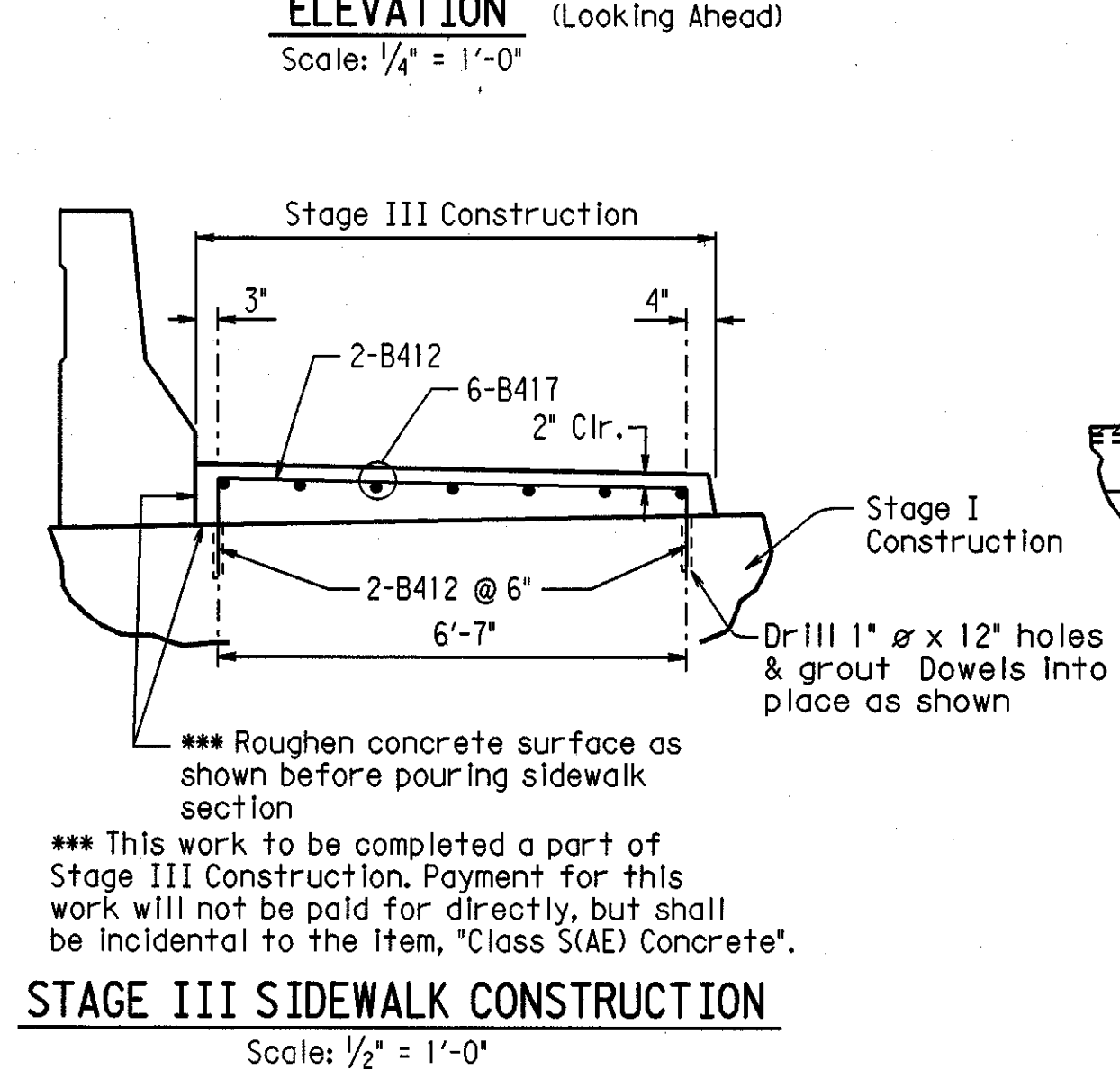
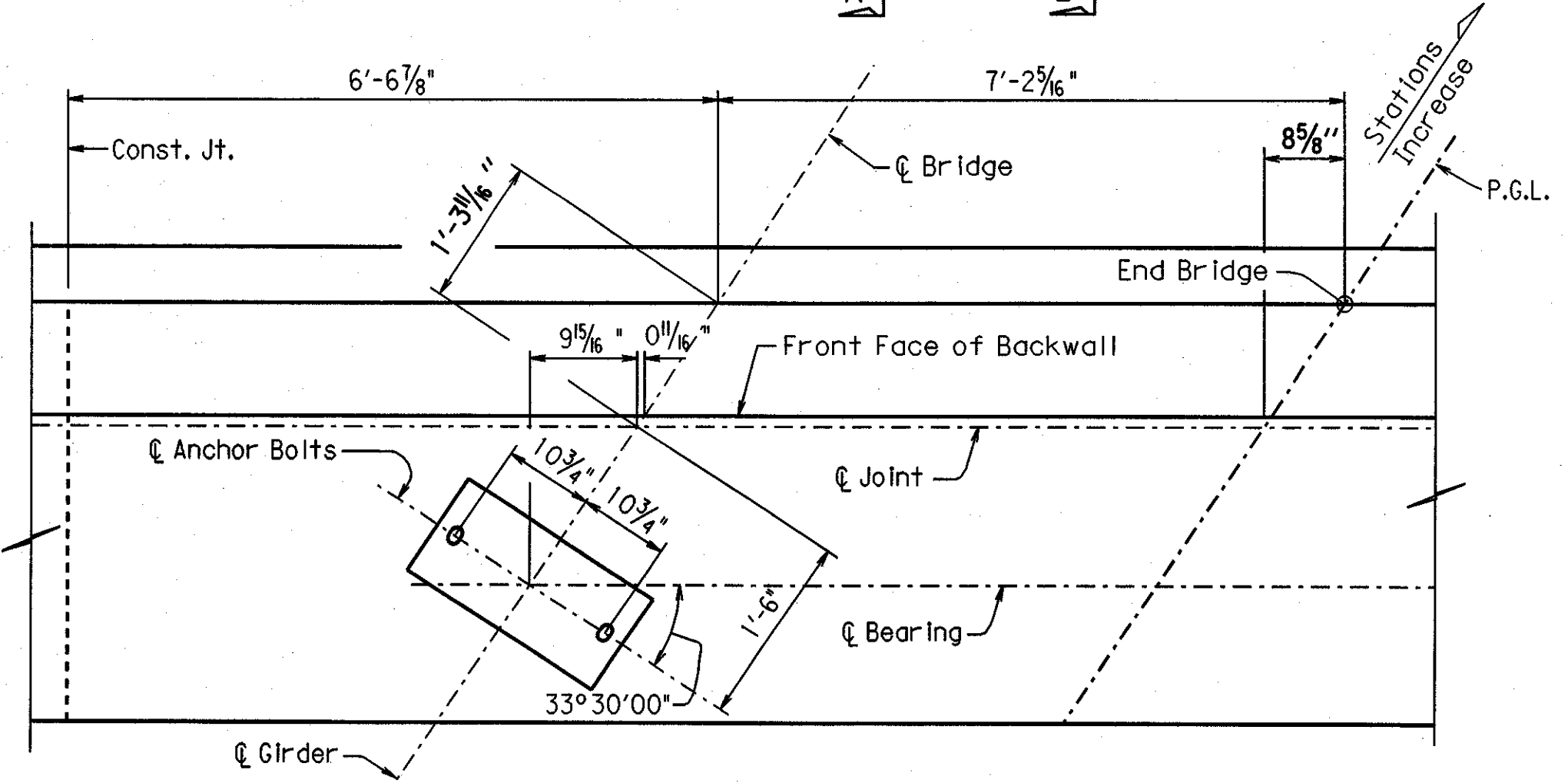
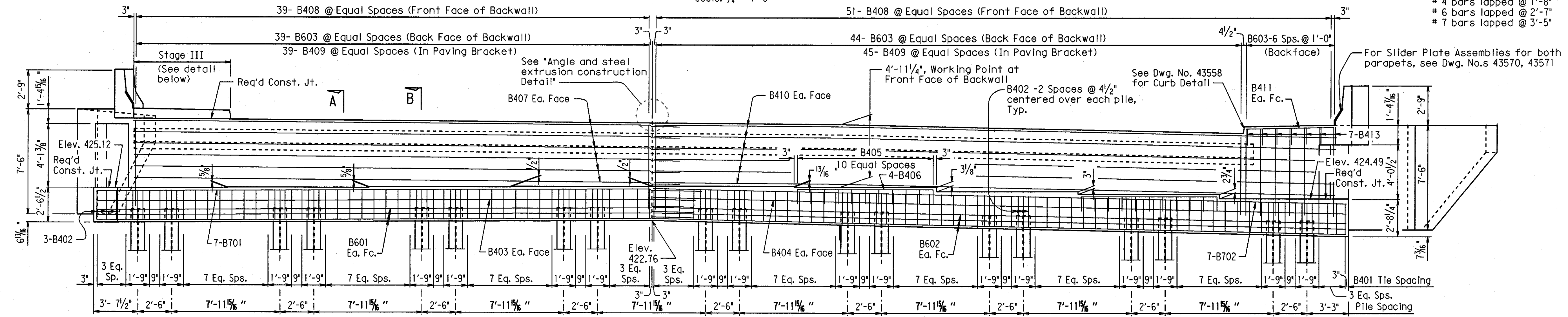
SHEET 1 OF 2
SEQUENCE OF CONSTRUCTION
STATE HWY. 183 OVER I-30
WEST OF ALCOA RD-
WEST OF PULASKI CO. LINE
SALINE COUNTY
ROUTE 30 SEC. 22
ARKANSAS STATE HIGHWAY COMMISSION
LITTLE ROCK, ARK.
DRAWN BY: CMF DATE: 1-14-02 FILENAME: BB60121X1.s+1
CHECKED BY: HWC DATE: 1-15-02 SCALE: 1/4" = 1'-0"
DESIGNED BY: RTP DATE: 10-01-01
BRIDGE NO. 06910 DRAWING NO. 43546

DATE REVISED	DATE FILMED	DATE REVISED	DATE FILMED	FED. ROAD DIST. NO.	STATE	FED. AID PROJ. NO.	SHEET NO.	TOTAL SHEETS
				6	ARK.			
				JOB NO.		B60121	190	406
						06910 End Bent Details 43549		

Note:
Class I Protective Surface Treatment shall be applied to the Roadway Face and Top of End Posts, the Sidewalks and the Top of the Backwall.

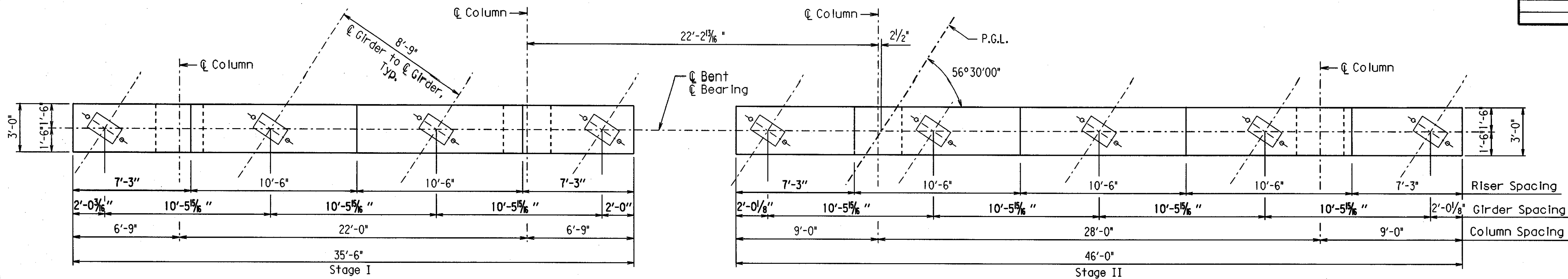


Note: For Details of Wing Walls and End Posts, Sections A-A, and B-B, and General Notes, See Dwg. No. 43550.
For Bar List, See Dwg. No. 43551.
4 bars lapped @ 1'-8"
6 bars lapped @ 2'-7"
7 bars lapped @ 3'-5"

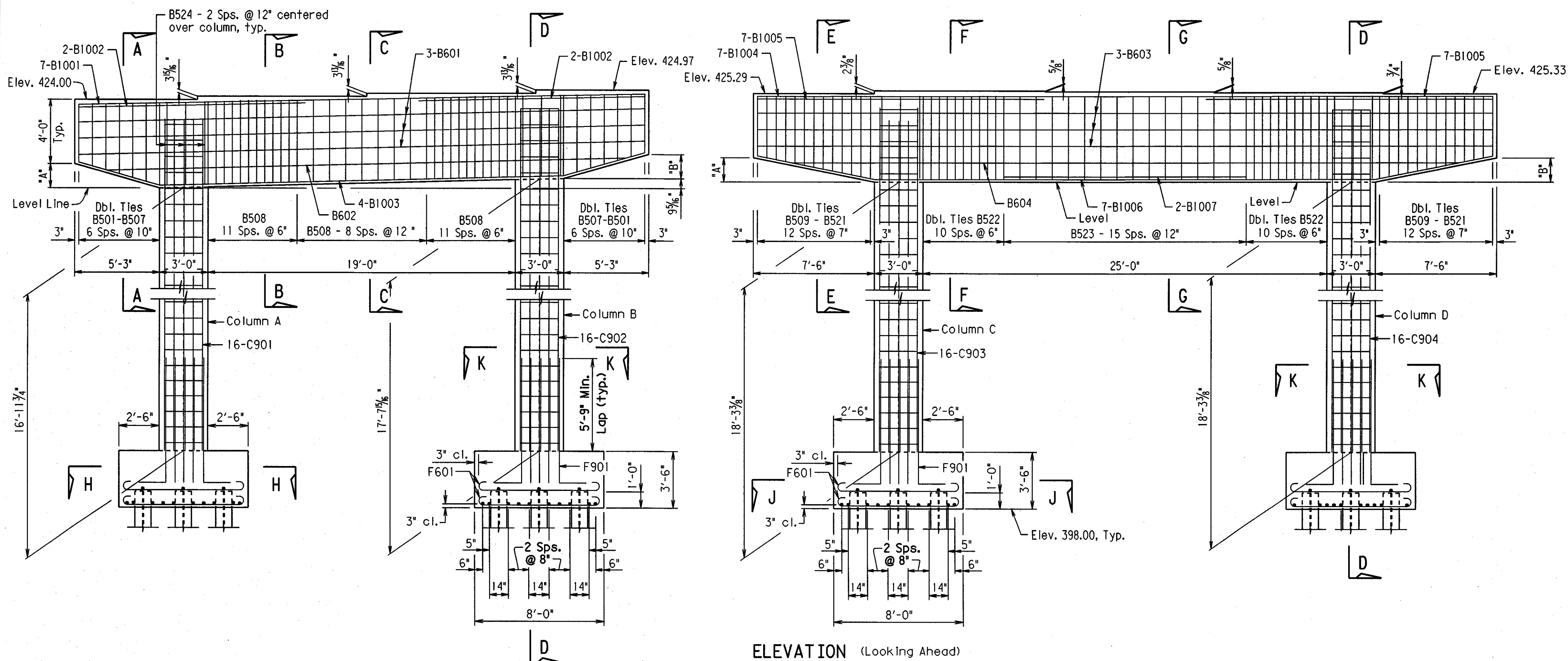


SHEET 2 OF 4
DETAILS OF END BENT 5
STATE HWY 183 OVER I-30
WEST OF ALCOA RD -
WEST OF PULASKI CO. LINE
SALINE COUNTY
ROUTE 30 SEC. 22
ARKANSAS STATE HIGHWAY COMMISSION
LITTLE ROCK, ARK.
DRAWN BY: CAB DATE: 4-1-02 FILENAME: BB60121X1.B5
CHECKED BY: RTP DATE: 4-1-02 SCALE: 1/4" = 1'-0"
DESIGNED BY: AS DATE: 9-14-01
BRIDGE NO. 06910 DRAWING NO. 43549

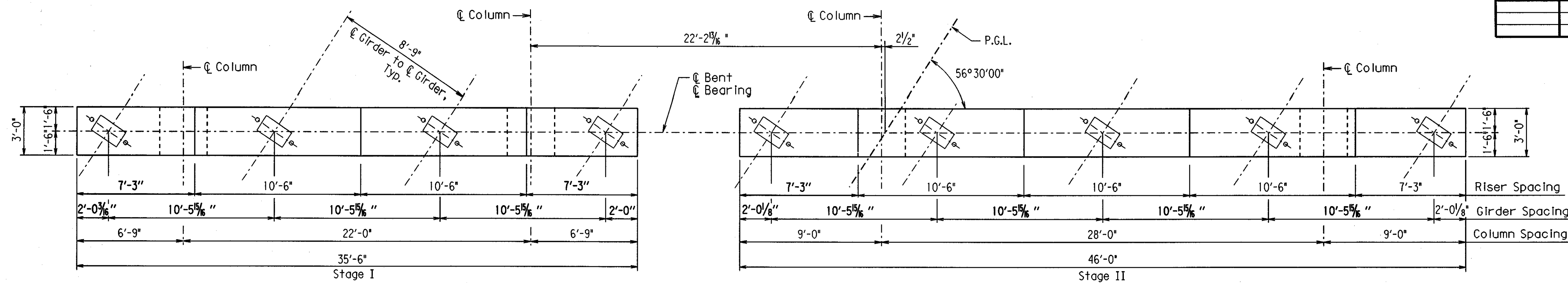
DATE REVISED	DATE FILMED	DATE REVISED	DATE FILMED	FED. ROAD DIST. NO.	STATE	FED. AID PROJ. NO.	SHEET NO.	TOTAL SHEETS
				6	ARK.			
				JOB NO.		B60121	193	406
						06910 Intermediate Bent Details	43552	



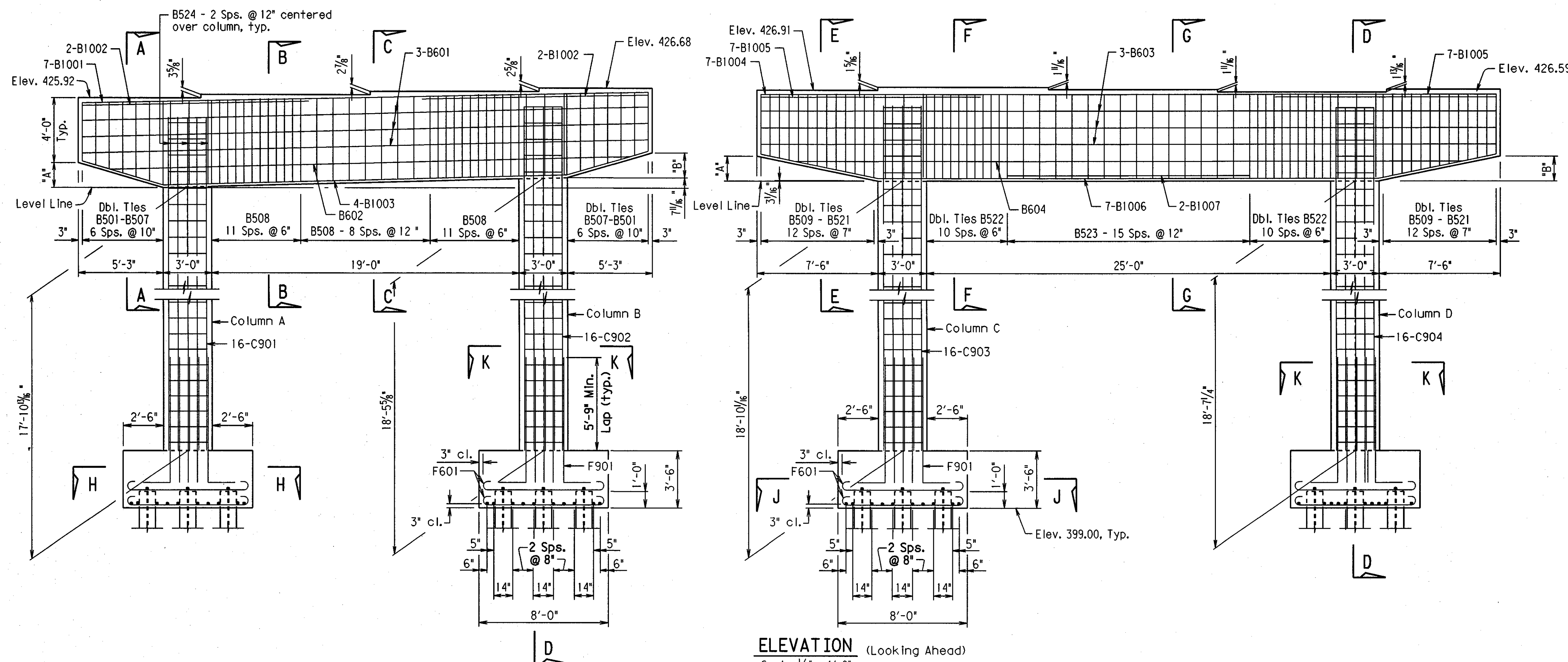
PLAN
Scale: 1/4" = 1'-0"



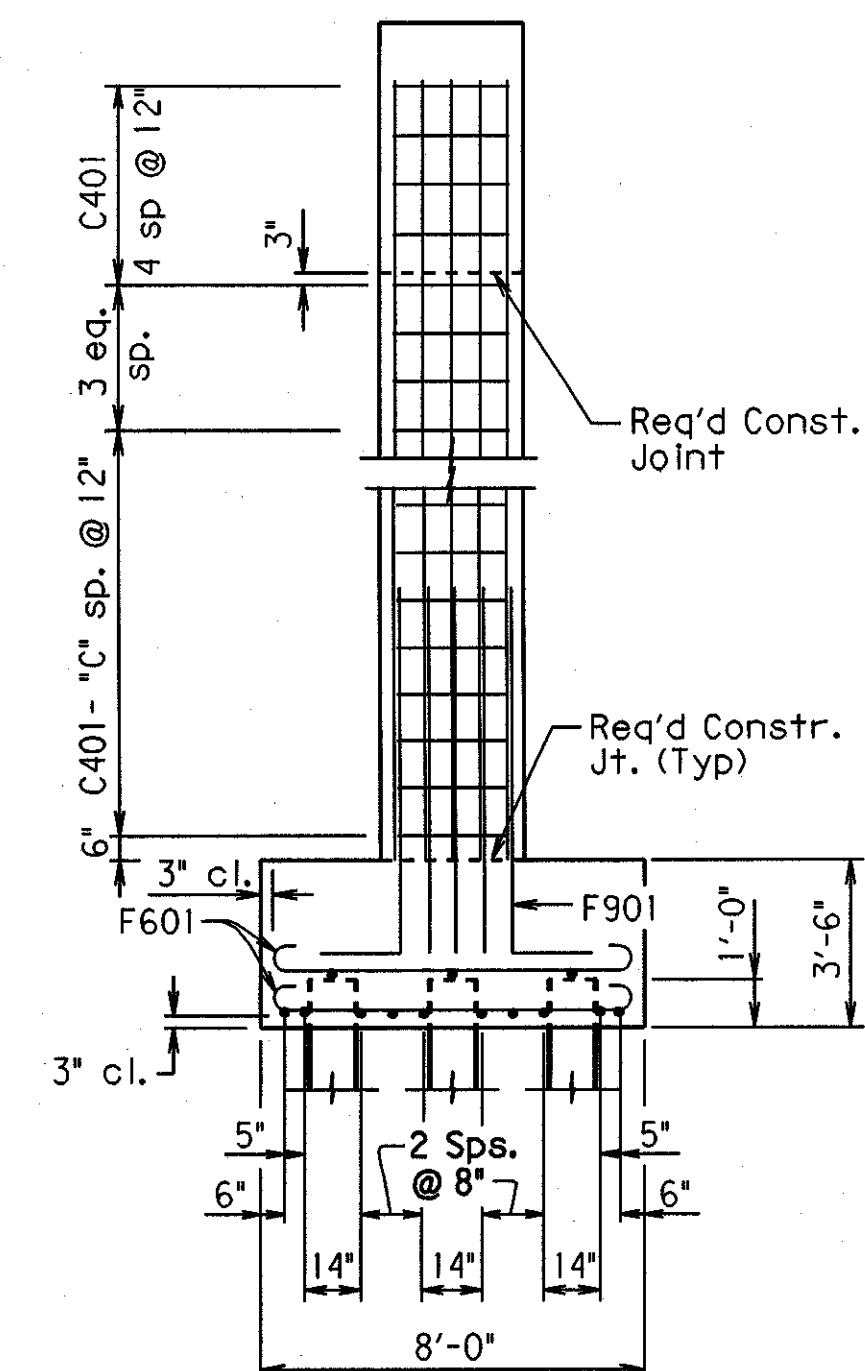
DATE REVISED	DATE FILMED	DATE REVISED	DATE FILMED	FED. ROAD DIST. NO.	STATE	FED. AID PROJ. NO.	SHEET NO.	TOTAL SHEETS
				6	ARK.			
				JOB NO.		B60121	194	406
06910 Intermediate Bent Details 43553								



PLAN
Scale: 1/4" = 1'-0"

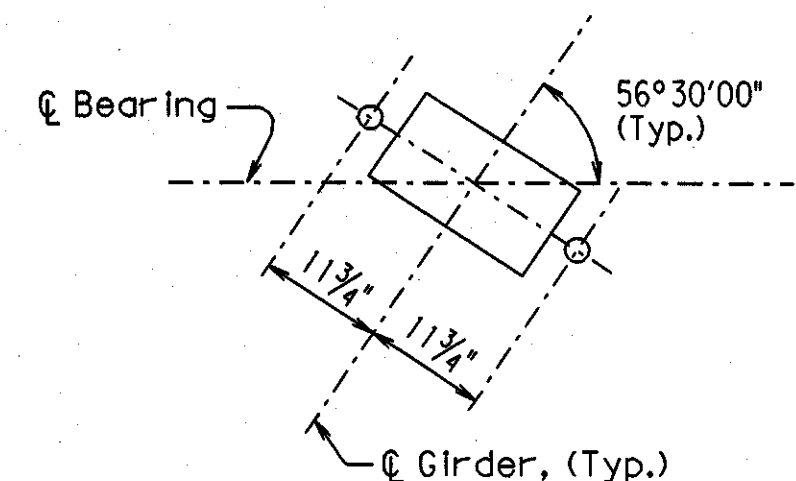


ELEVATION (Looking Ahead)
Scale: 1/4" = 1'-0"



SECTION D-D
Scale: 1/4" = 1'-0"

Note: For Details of Elastomeric Bearings, see Dwg. No. 43569.



TYPICAL ANCHOR BOLT LAYOUT
N.T.S.

GENERAL NOTES

All Concrete shall be Class "S" with a minimum 28-day compressive strength $f'_c = 3500$ psi. Concrete shall be poured in the dry and all exposed corners to be chamfered $\frac{3}{4}$ " unless otherwise noted.

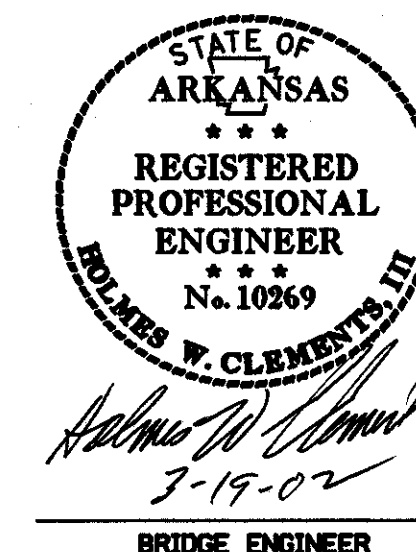
All reinforcing steel shall conform to AASHTO M31 or M53, Grade 60 (yield strength = 60,000 psi).

Reinforcing bars in top of cap shall be properly placed to avoid interference with anchor bolts or sheet metal sleeves.

For additional information, see layout.

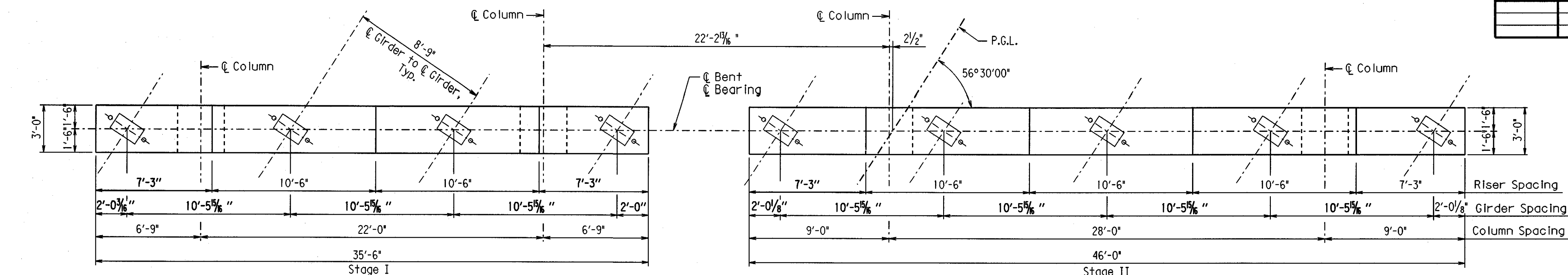
For Sections A-A, B-B, C-C, E-E, F-F, G-G, H-H, J-J, and K-K see Dwg. No. 43555 and for the Bar List, see Dwg. No. 43556.

TABLE OF CAP DIMENSIONS			
Bent	"A"	"B"	"C"
3 Left	1'-6 1/16"	1'-8 1/8"	15
3 Right	1'-6 3/4"	1'-6"	16

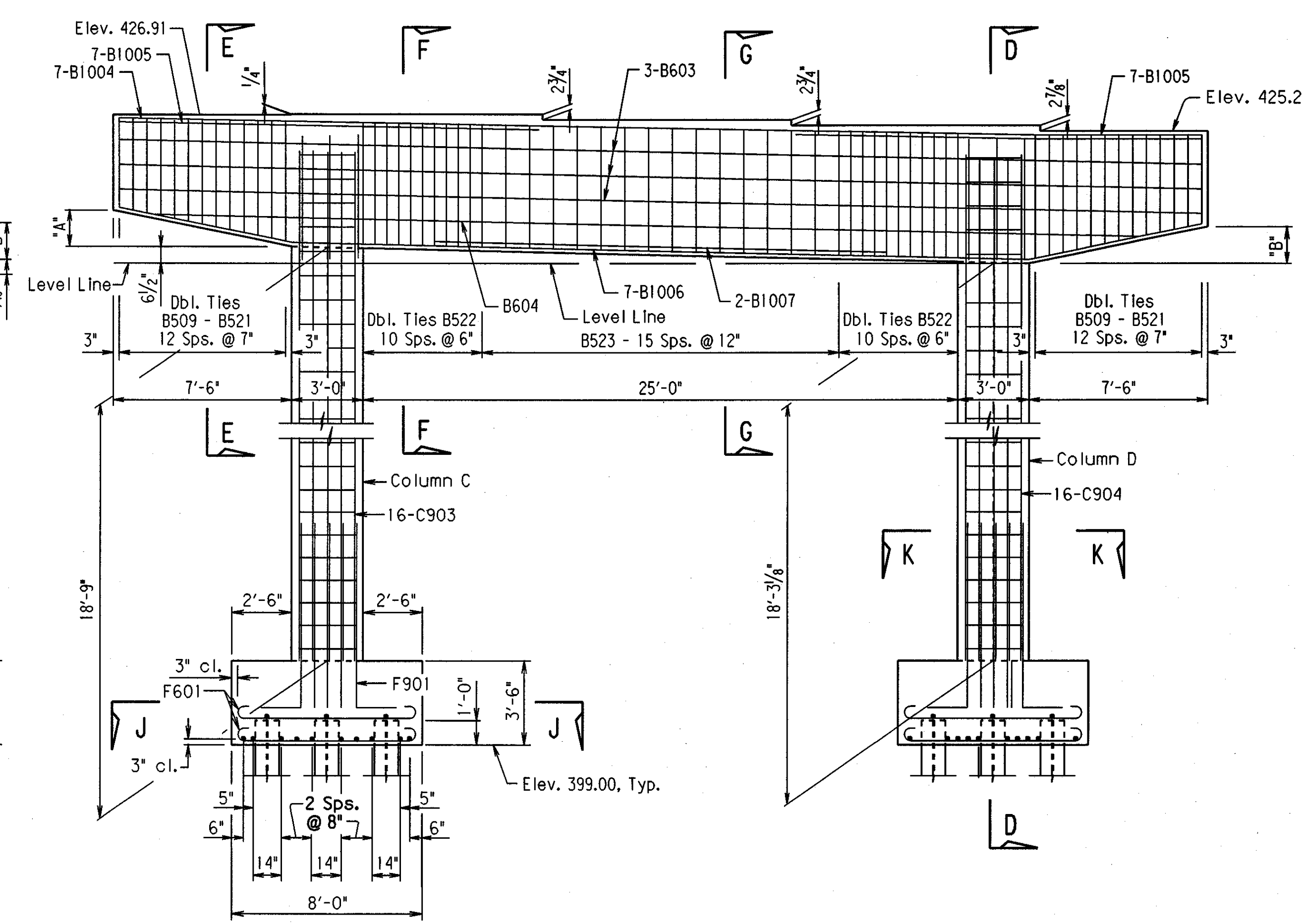
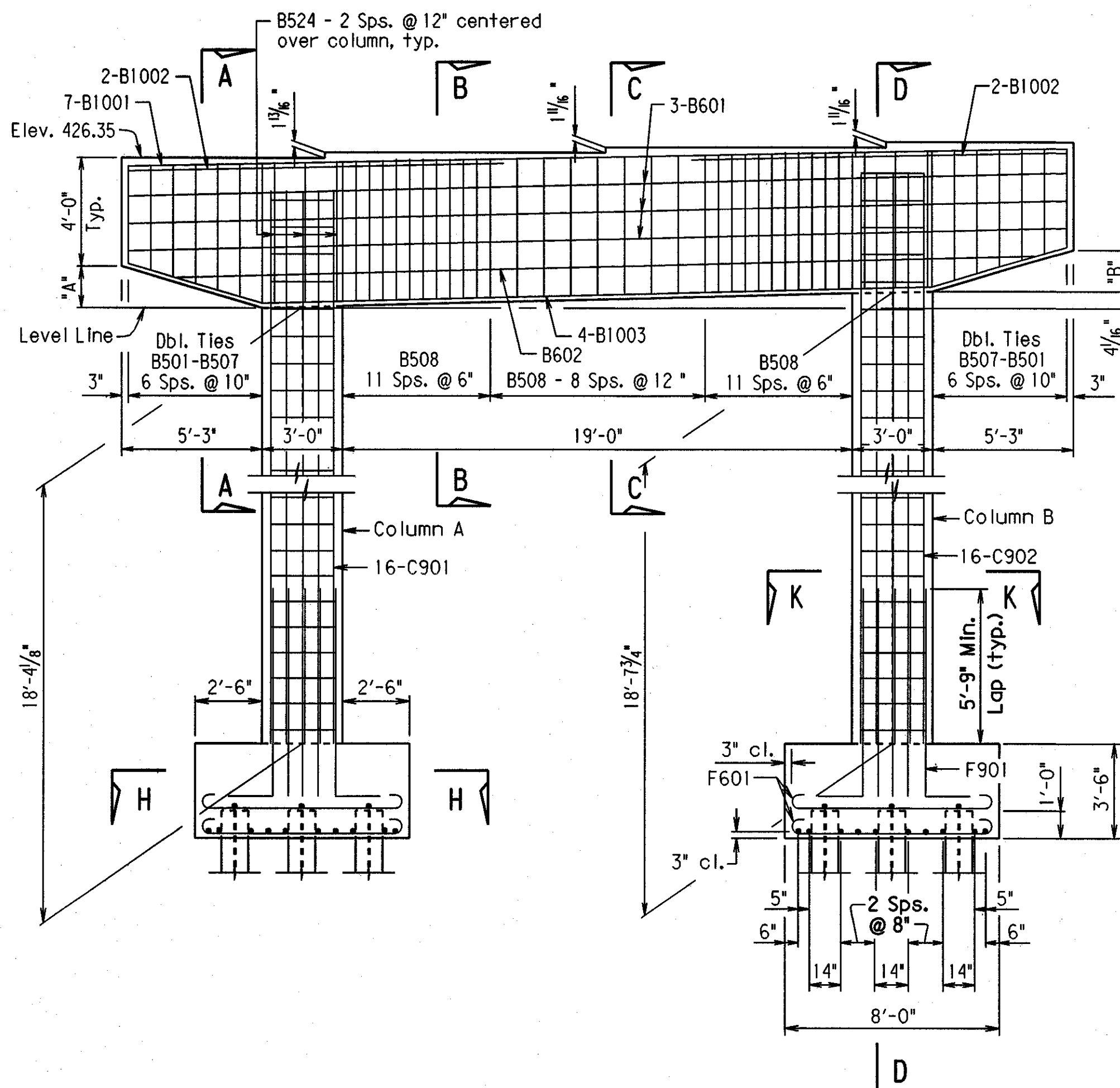


SHEET 2 OF 5
DETAILS INTERMEDIATE BENT 3
STATE HWY 183 OVER I-30
WEST OF ALCOA RD -
WEST OF PULASKI CO. LINE
SALINE COUNTY
ROUTE 30 SEC. 22
ARKANSAS STATE HIGHWAY COMMISSION
LITTLE ROCK, ARK.
DRAWN BY: CAB DATE: 12-14-01 FILENAME: BB60121X1.B3
CHECKED BY: DPD DATE: 12-14-01 SCALE: As Shown
DESIGNED BY: RTP DATE: 8-24-01
BRIDGE NO. 06910 DRAWING NO. 43553

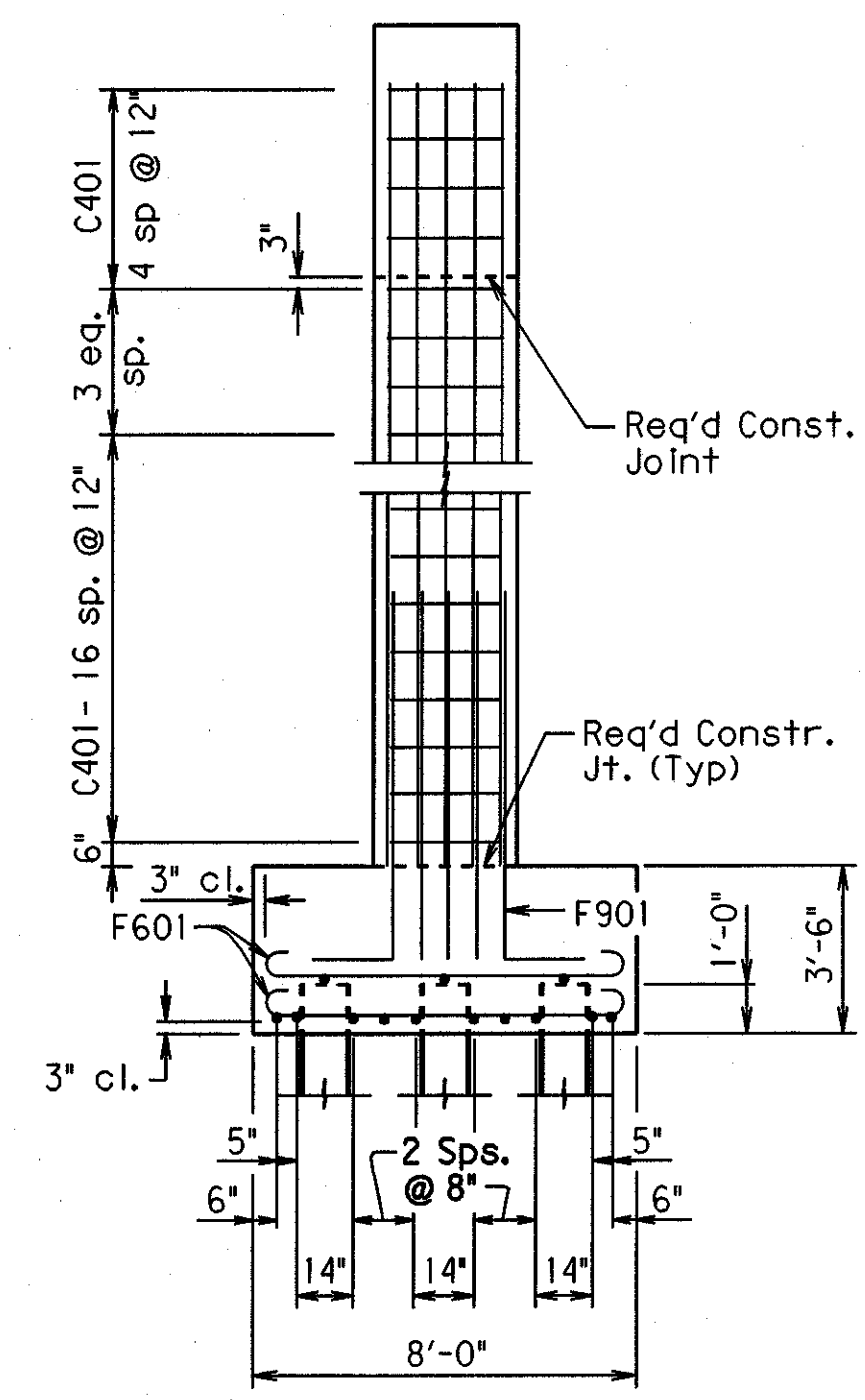
DATE REVISED	DATE FILMED	DATE REVISED	DATE FILMED	FED. ROAD DIST. NO.	STATE	FED. AID PROJ. NO.	SHEET NO.	TOTAL SHEETS
				6	ARK.			
				JOB NO.		B60121	195	406
						06910 Intermediate Bent Details	43554	



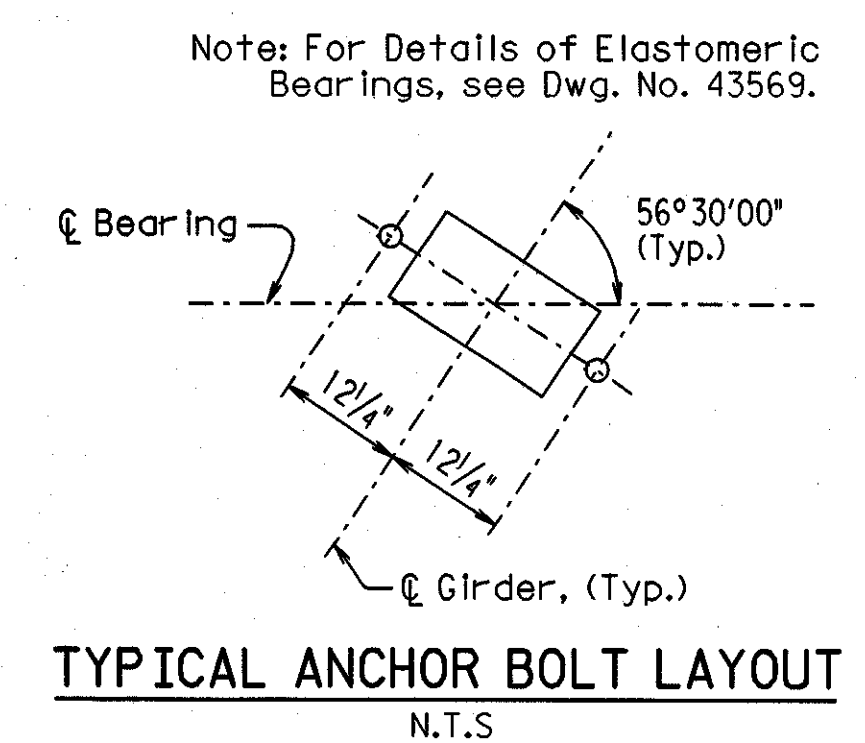
PLAN
Scale: 1/4" = 1'-0"



ELEVATION (Looking Ahead)
Scale: 1/4" = 1'-0"



SECTION D-D
Scale: 1/4" = 1'-0"



GENERAL NOTES

All Concrete shall be Class "S" with a minimum 28-day compressive strength $f'_c = 3500$ psi. Concrete shall be poured in the dry and all exposed corners to be chamfered 3/4" unless otherwise noted.

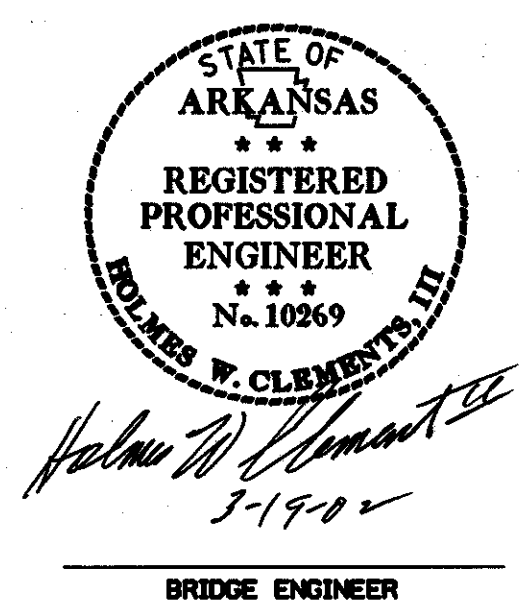
All reinforcing steel shall conform to AASHTO M31 or M53, Grade 60 (yield strength = 60,000 psi).

Reinforcing bars in top of cap shall be properly placed to avoid interference with anchor bolts or sheet metal sleeves.

For additional information, see layout.

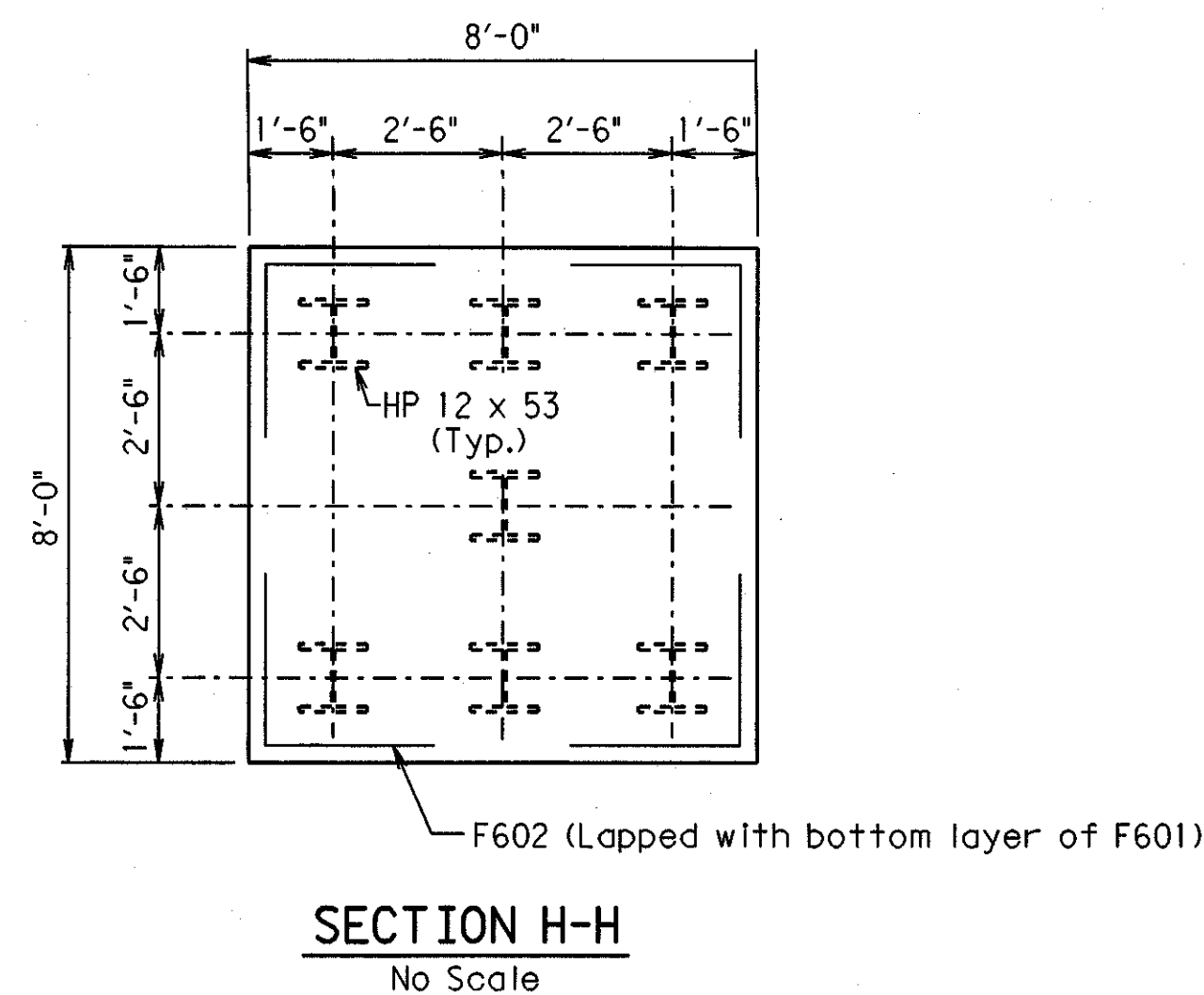
For Sections A-A, B-B, C-C, E-E, F-F, G-G, H-H, J-J, and K-K see Dwg. No. 43555 and for the Bar list, see Dwg. No. 43556.

TABLE OF CAP DIMENSIONS		
Bent	"A"	"B"
3 Left	1'-6 3/8"	1'-7 3/8"
3 Right	1'-7 1/8"	1'-6"

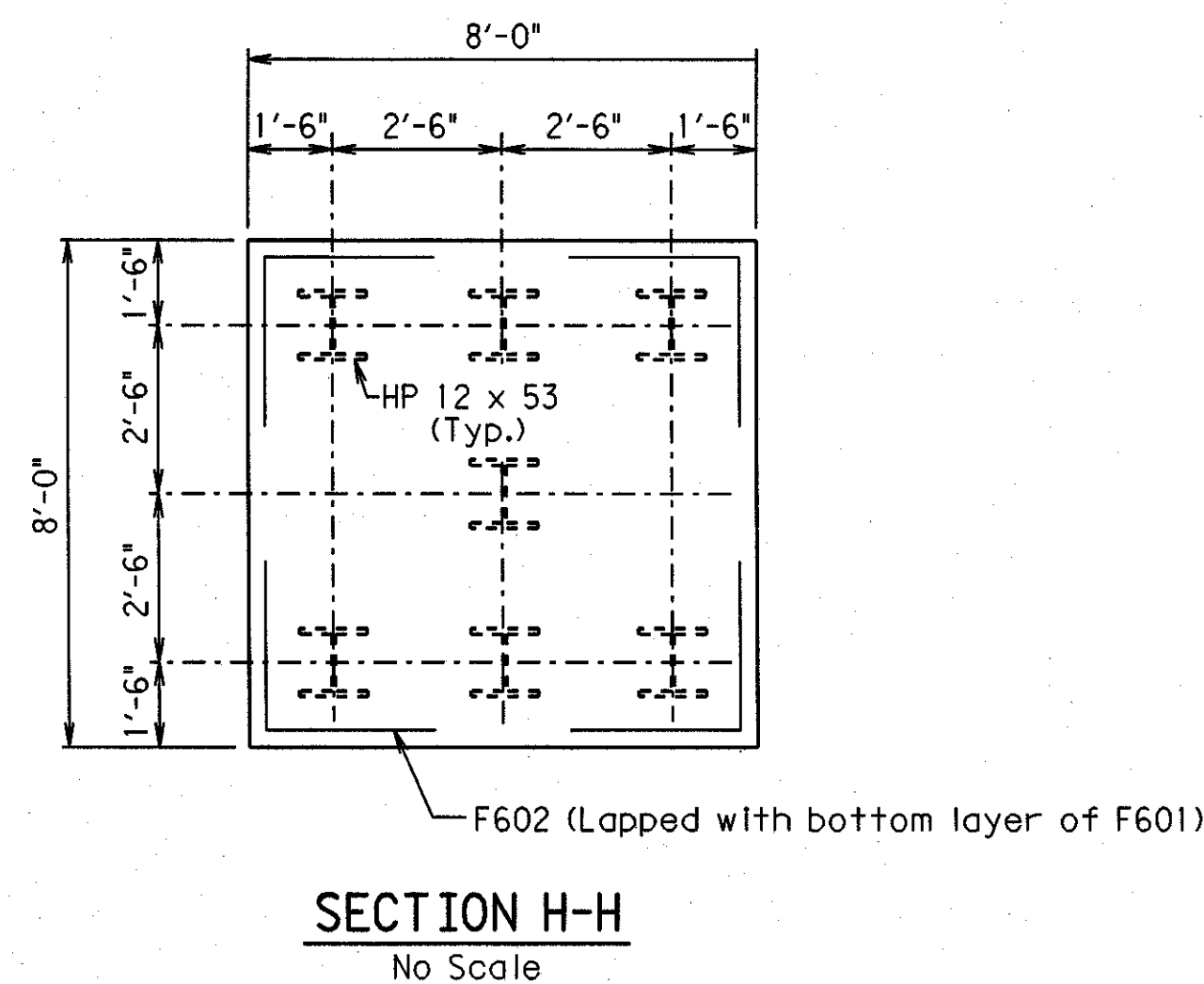
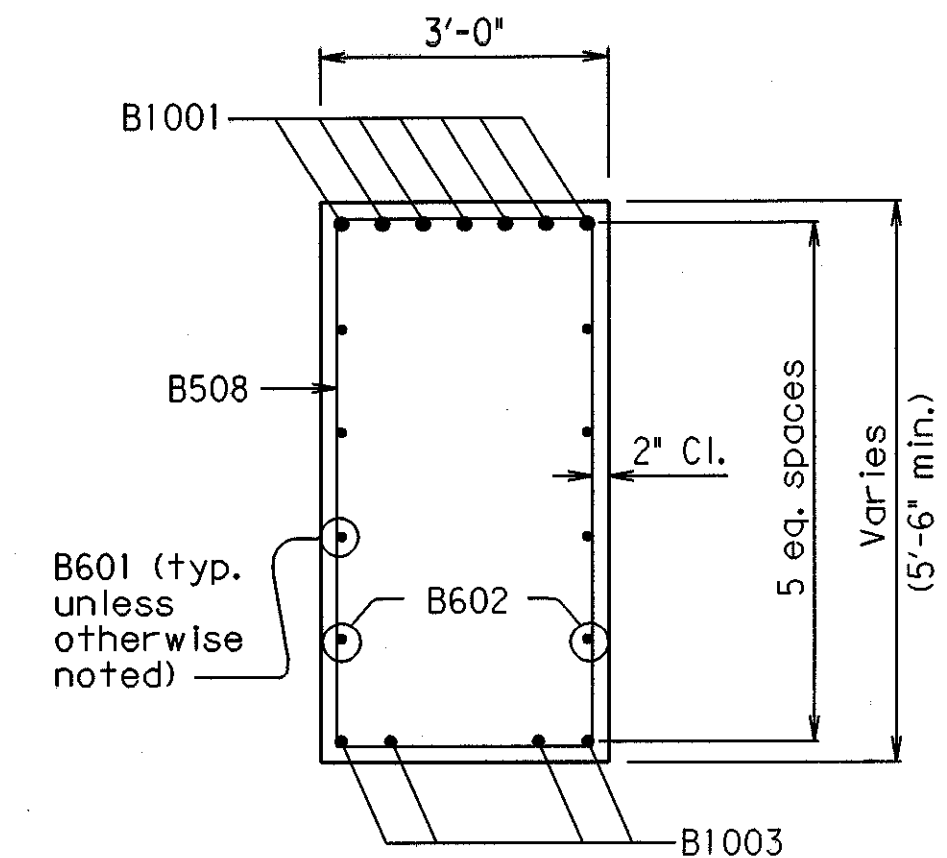
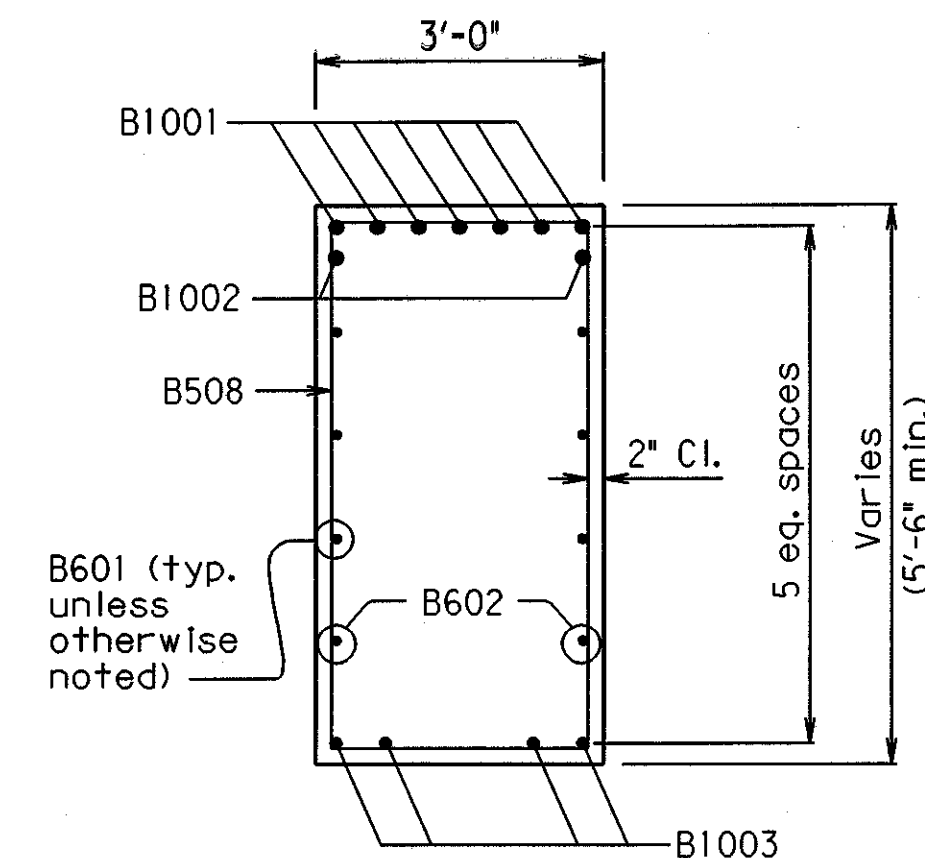
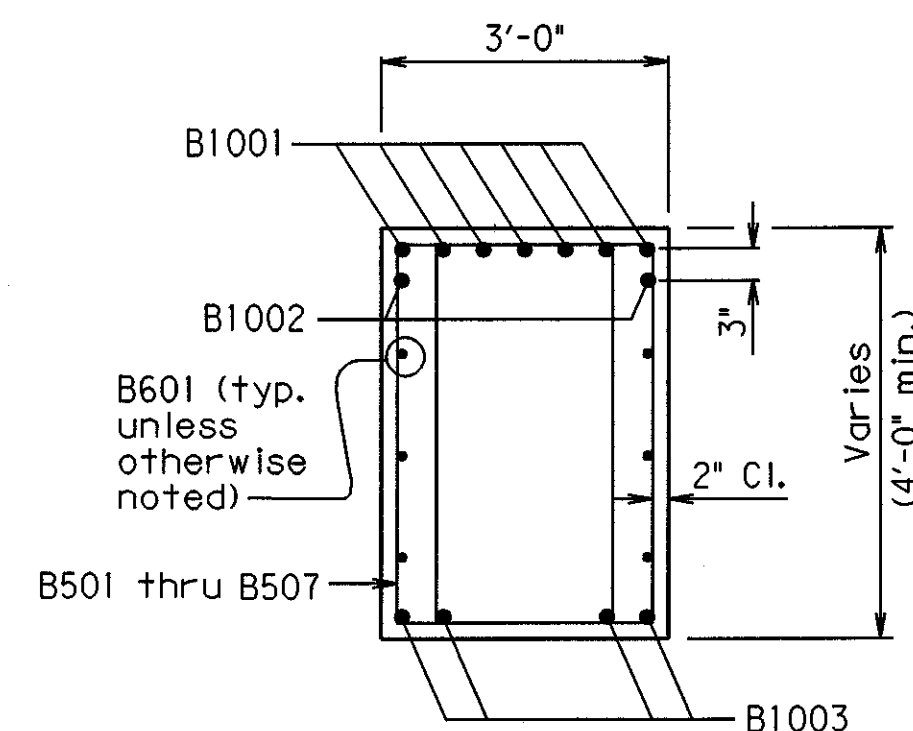
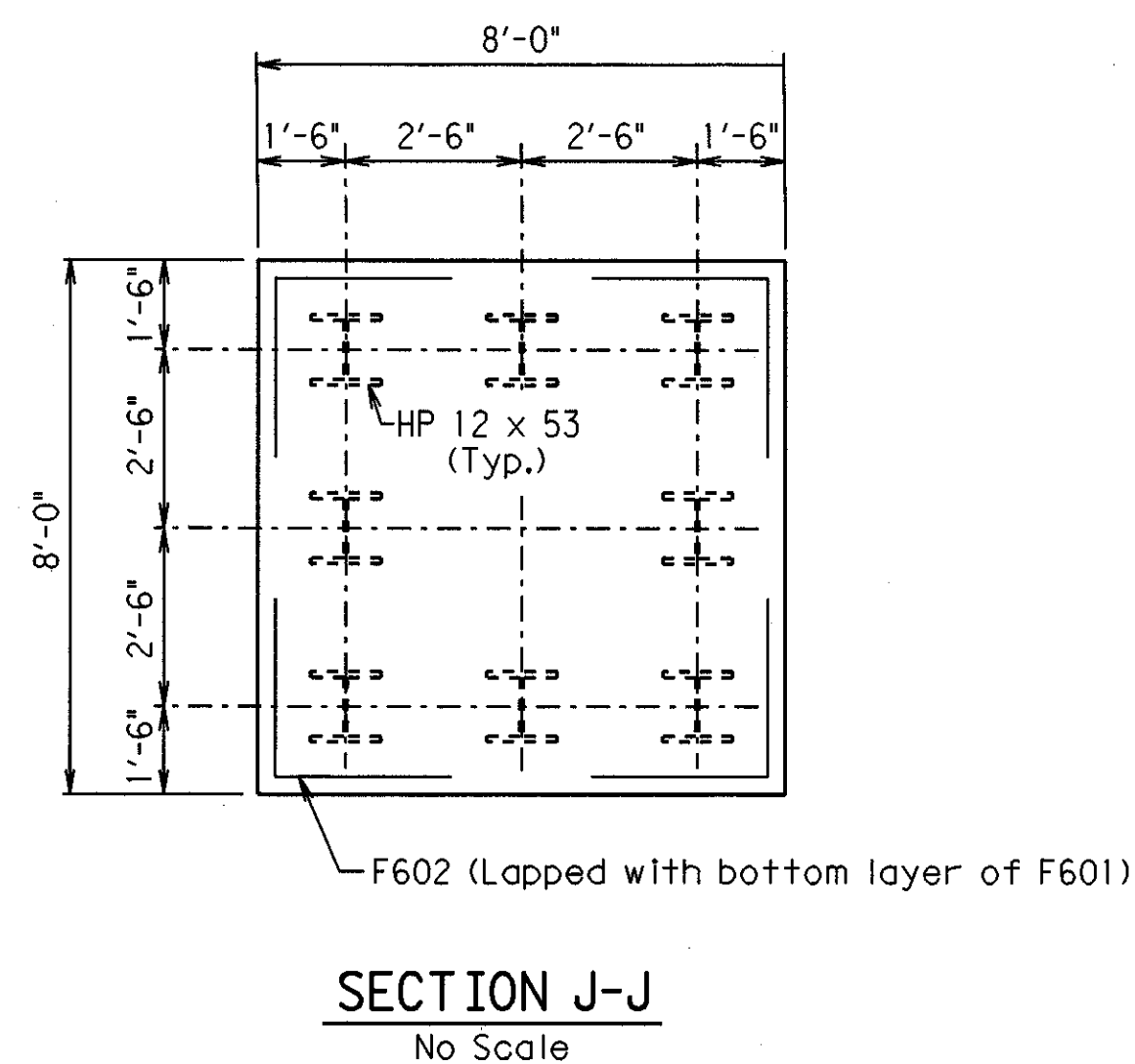


SHEET 3 OF 5
DETAILS INTERMEDIATE BENT 4
STATE HWY 183 OVER I-30
WEST OF ALCOA RD -
WEST OF PULASKI CO. LINE
SALINE COUNTY
ROUTE 30 SEC. 22
ARKANSAS STATE HIGHWAY COMMISSION
LITTLE ROCK, ARK.
DRAWN BY: CAB DATE: 12-14-01 FILENAME: BB60121X1.B4
CHECKED BY: DPD DATE: 12-14-01 SCALE: As Shown
DESIGNED BY: RTP DATE: 8-24-01
BRIDGE NO. 06910 DRAWING NO. 43554

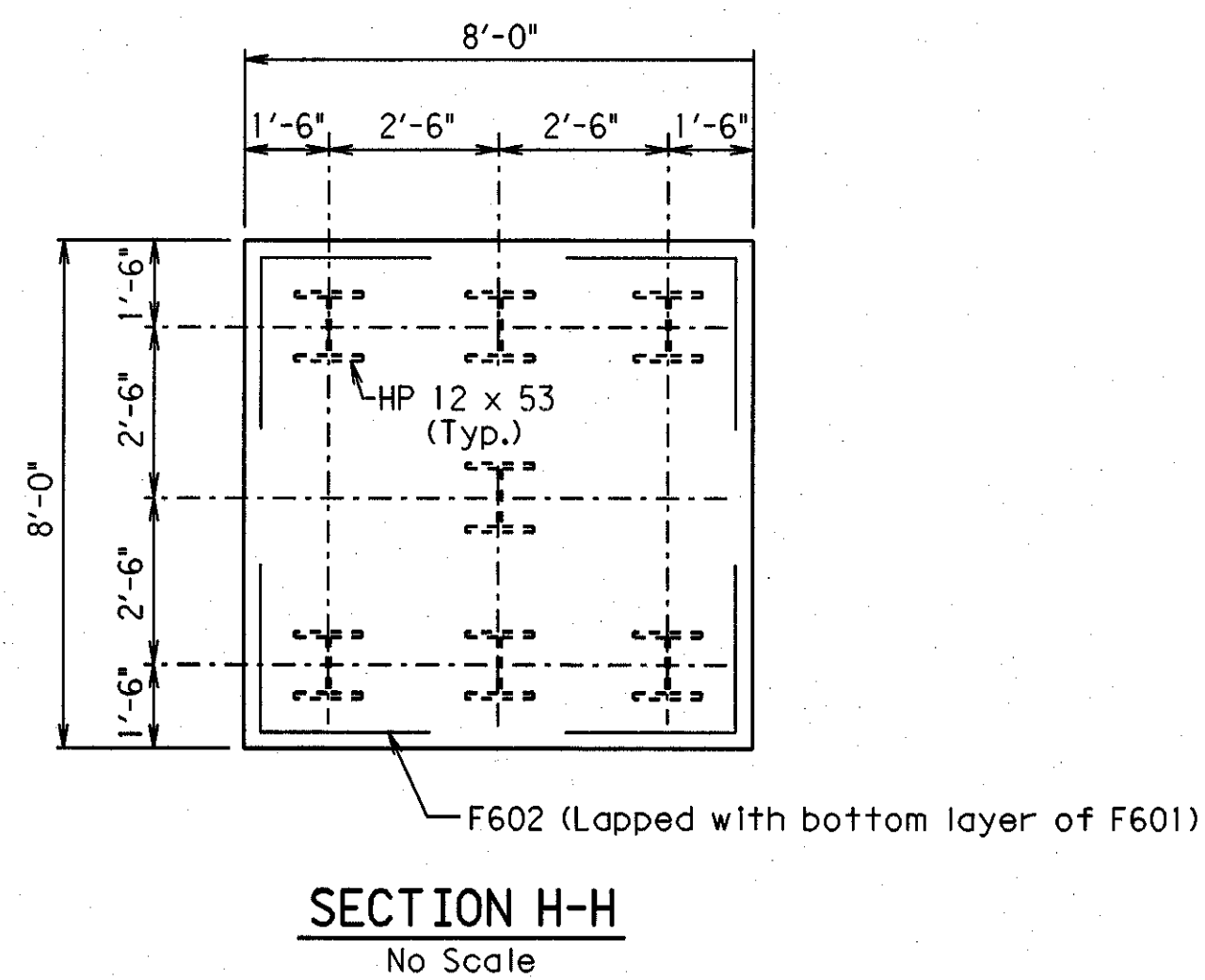
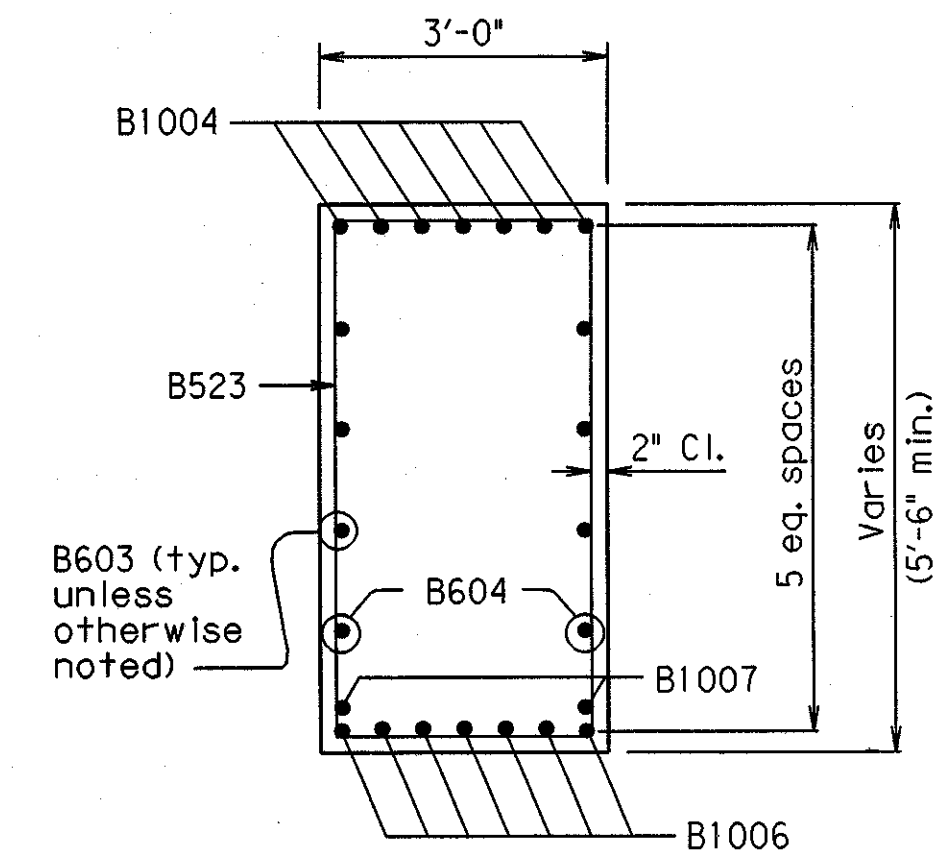
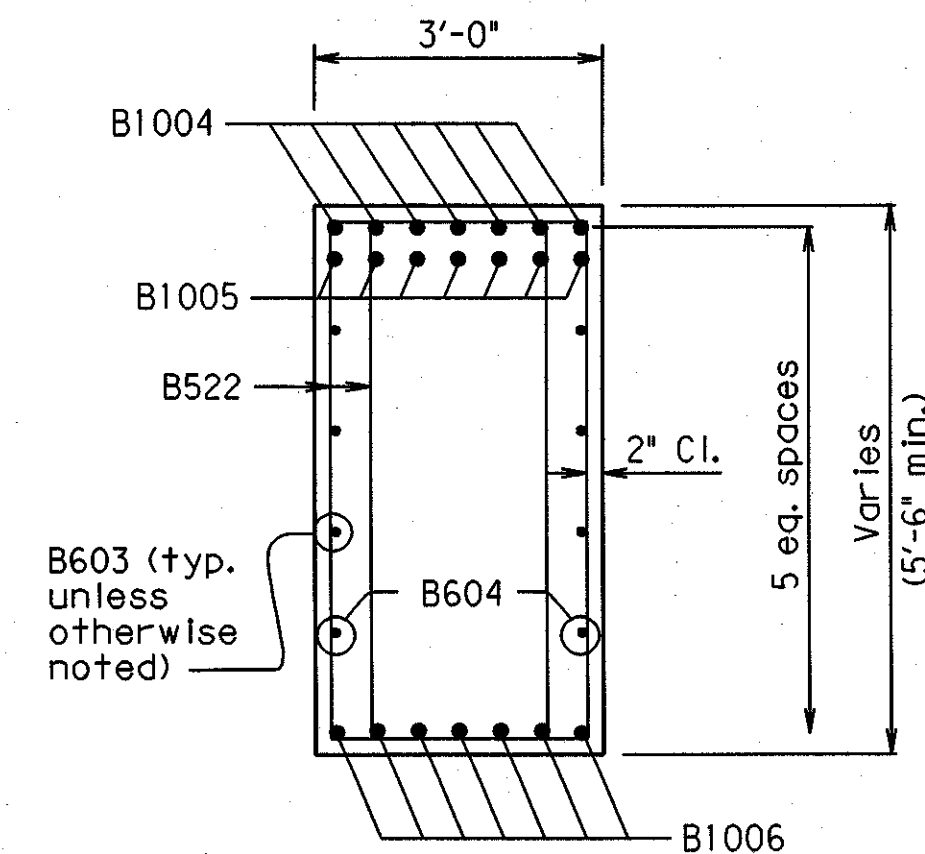
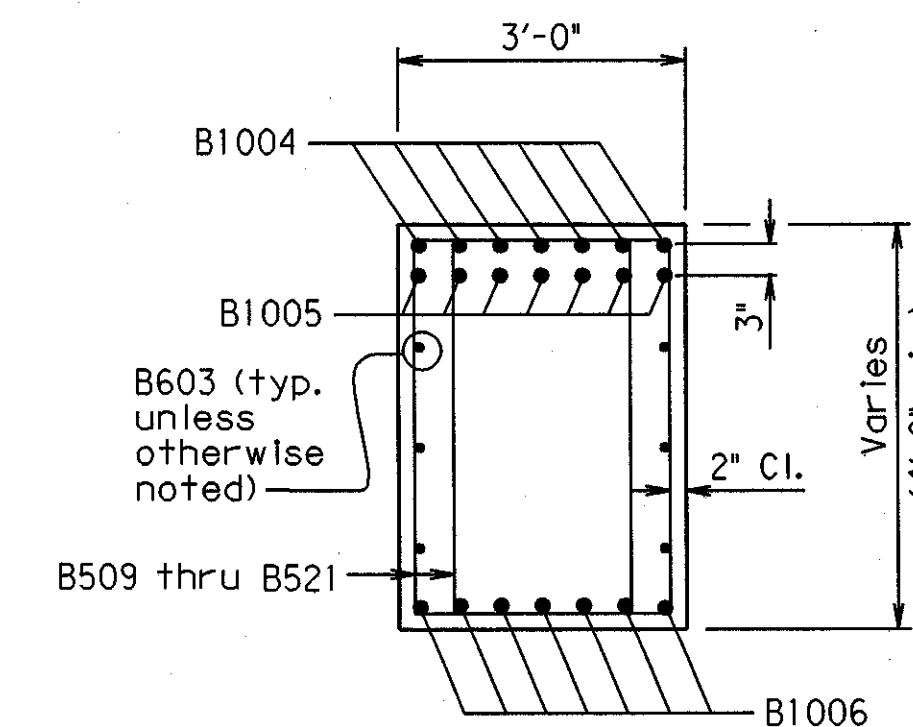
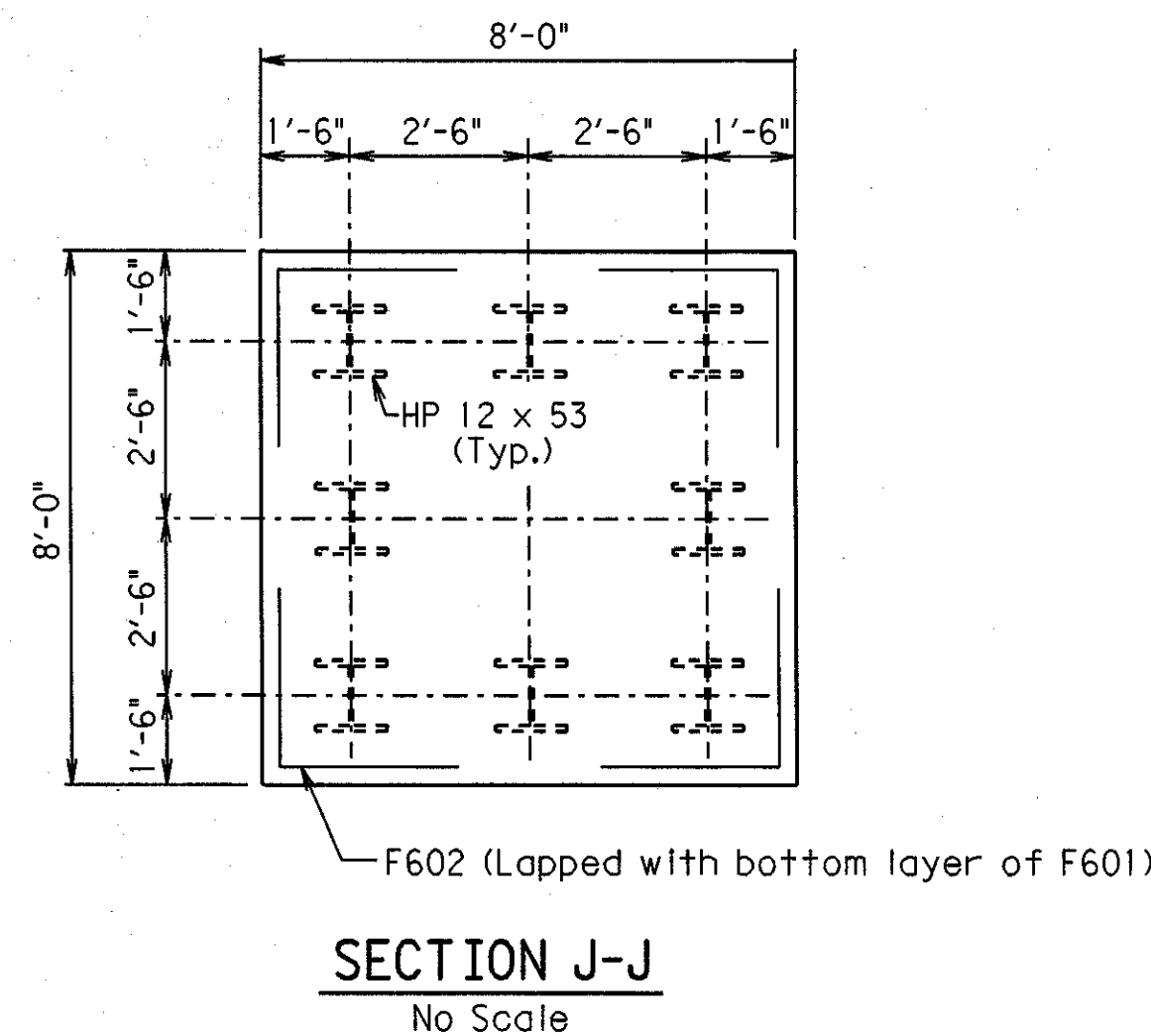
DATE REVISED	DATE FILMED	DATE REVISED	DATE FILMED	FED. ROAD DIST. NO.	STATE	FED. AID PROJ. NO.	SHEET NO.	TOTAL SHEETS
				6	ARK.			
				JOB NO.		B60121	196	406
06910 Intermediate Bent Detail 43555								



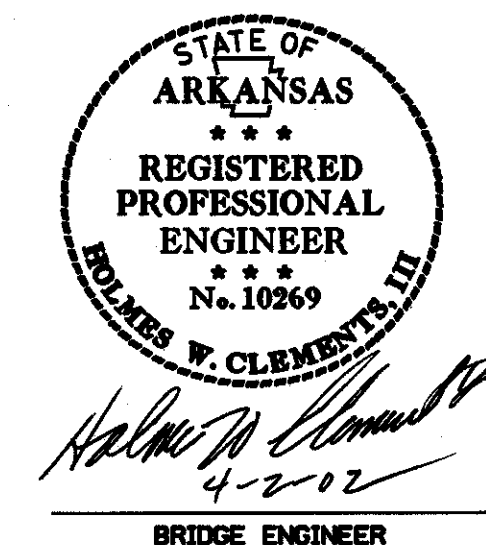
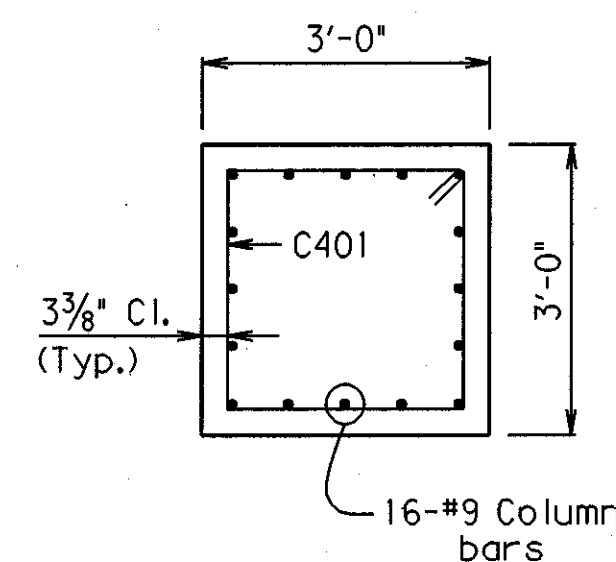
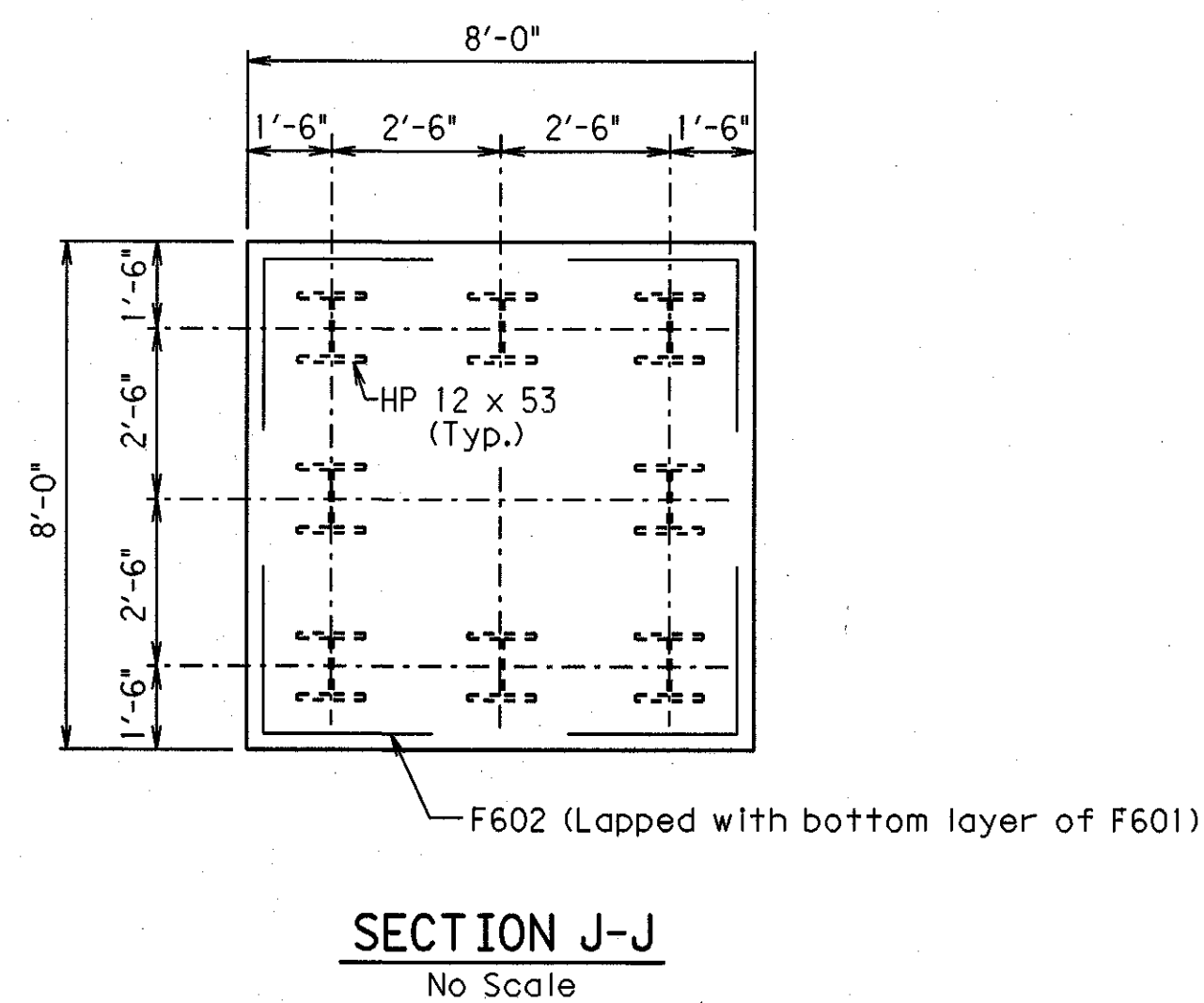
BENT NO. 2
(See Dwg. No. 43552)



BENT NO. 3
(See Dwg. No. 43553)



BENT NO. 4
(See Dwg. No. 43554)

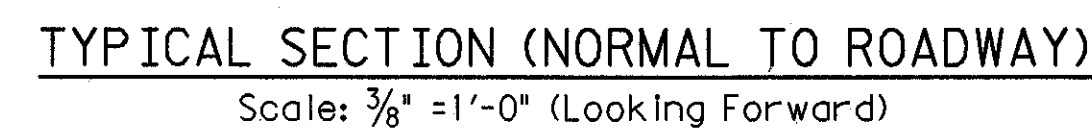


SHEET 4 OF 5
DETAILS OF INTERMEDIATE BENTS
STATE HWY 183 OVER I-30
WEST OF ALCOA RD -
WEST OF PULASKI CO. LINE
SALINE COUNTIES

ROUTE 30 SEC. 22
ARKANSAS STATE HIGHWAY COMMISSION
LITTLE ROCK, ARK.
DRAWN BY: CAB DATE: 4-1-02 FILENAME: BB60121X1.Bdt1
CHECKED BY: DPD DATE: 4-1-02 SCALE: As Shown
DESIGNED BY: RTP DATE: 9-23-01
BRIDGE NO. 06910 DRAWING NO. 43555

One Epoxy Coated #5 bar in the top and one Epoxy Coated #5 bar in the bottom may be substituted for each bar S501E and S502E. Payment will be based on weight of bar S501E and S502E.

DATE REVISED	DATE FILMED	DATE REVISED	DATE FILMED	FED. ROAD DIST. NO.	STATE	FED. AID PROJ. NO.	SHEET NO.	TOTAL SHEETS
				6	ARK.			
				JOB NO.		B60121	198	406
				06910 Typical Section 43557				



- ① Minus = $\frac{1}{4}$ "
Plus = Equal to the amount of slab thickness used to meet slab thickness tolerance - see "ADJUSTMENT FOR SLAB THICKNESS TOLERANCE WHEN REMOVABLE DECK FORMING IS USED".
- ② See "ADJUSTMENT FOR SLAB THICKNESS TOLERANCE WHEN REMOVABLE DECK FORMING IS USED" on Dwg. No. 43558.

"B" equals $8\frac{3}{8}$ " for Lt. side of Bridge
 "B" equals $8\frac{3}{8}$ " from Begin Bridge
 Sta. 19+43.54 to Sta. 22+86.56 and
 varies from $8\frac{3}{8}$ " at Sta. 22+86.56 to
 $8\frac{13}{16}$ " at End Bridge Sta. 23+43.53

Rdwy. C15 X 33.9
Conn. L's Split C15 X 33.9
Detail Device $\frac{1}{8}$ " high and provide $\frac{1}{4}$ " shims
using 2 - $\frac{1}{16}$ " and 1 - $\frac{1}{8}$ " PL's

Transverse:
S402E & S403E @ 14" in top of sidewalk
S404E @ 4"-0" Max. spacing in bottom of
sidewalk (Stage III only)
S606E @ 14" in top of sidewalk

Longitudinal:
S401E In top of sidewalk (place as shown)



Scale: $\frac{3}{8}" = 1'-0"$ (Looking Forward)

1'-8" Lap on #4 bars
2'-2" Lap on #5 bars
2'-7" Lap on #6 bars

*** Bolts for Cross-Frame between Beams 4 & 5 are not to be tightened until the bridge deck on Stage II is poured.



Scale: $\frac{3}{4}" = 1'-0"$



Scale: $\frac{3}{4}" = 1'-0"$

STATE OF
ARKANSAS

REGISTERED
PROFESSIONAL
ENGINEER

No. 10269
EOLANES W. CLEMENTS, IV

Halmon W. Clements
4-2-02

BRIDGE ENGINEER

SHEET 1 OF 12
DETAILS OF 400'-0" CONTINUOUS PLATE GIRDER UNIT
STATE HWY 183 OVER I-30
WEST OF ALCOA RD -
WEST OF PULASKI CO.
SALINE COUNTY

ROUTE 30 SEC. 22
ARKANSAS STATE HIGHWAY COMMISSION

LITTLE ROCK, ARK.

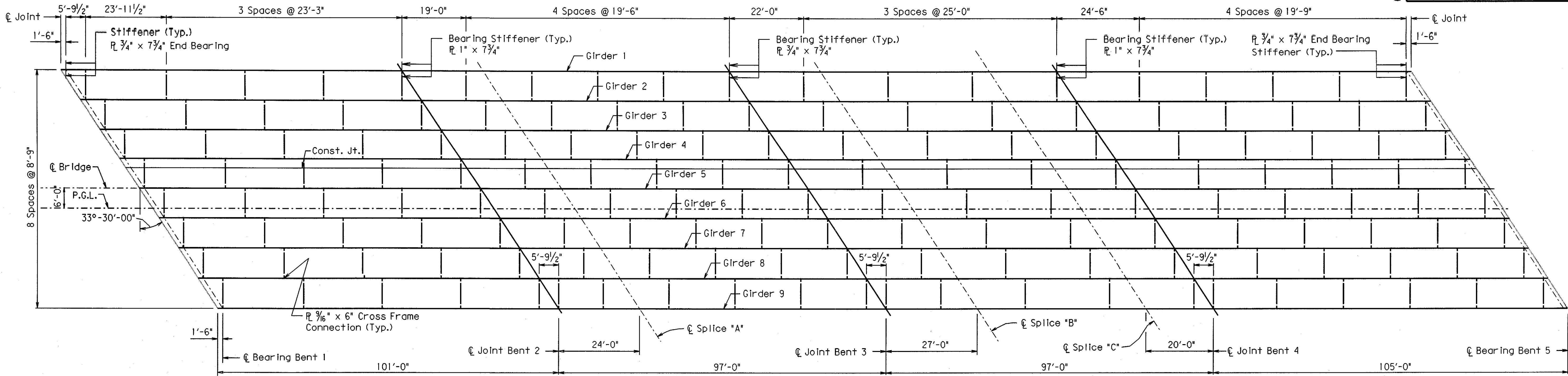
DRAWN BY: CAB/CCK **DATE:** 4-1-02 **FILENAME:** B60121X1.SI
CHECKED BY: HWC **DATE:** 4-1-02 **SCALE:** As Shown

BRIDGE NO. 06910

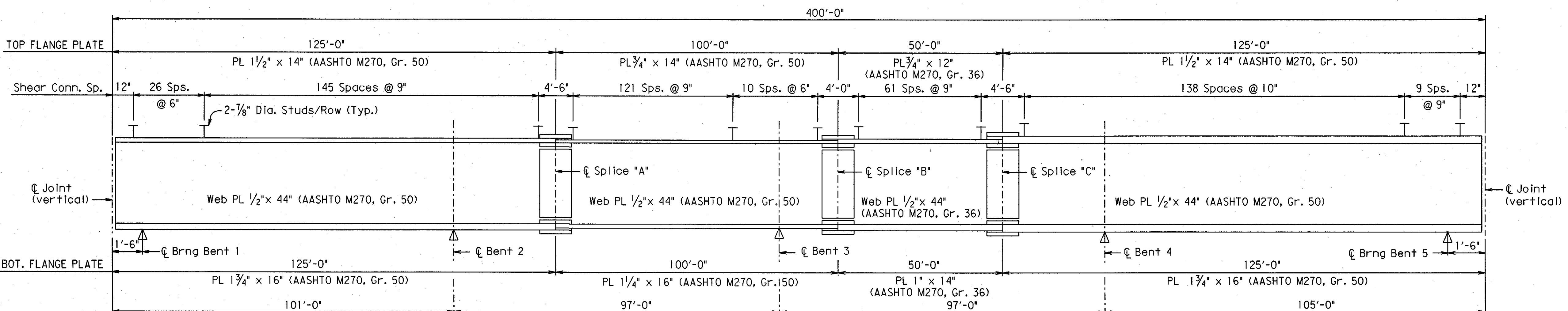
DRAWING NO. 43557

DATE REVISED	DATE FILMED	DATE REVISED	DATE FILMED	FED. ROAD DIST. NO.	STATE	FED. AID PROJ. NO.	SHEET NO.	TOTAL SHEETS
				6	ARK.			
				JOB NO.		B60121	20	406

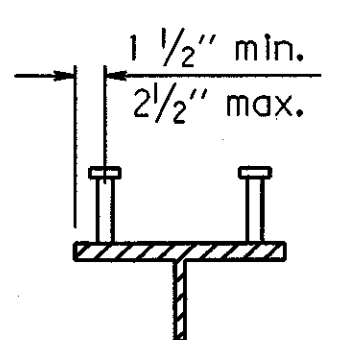
06910 Framing Plan 43560



FRAMING PLAN
No Scale



TYPICAL CONTINUOUS PLATE GIRDER ELEVATION
No Scale

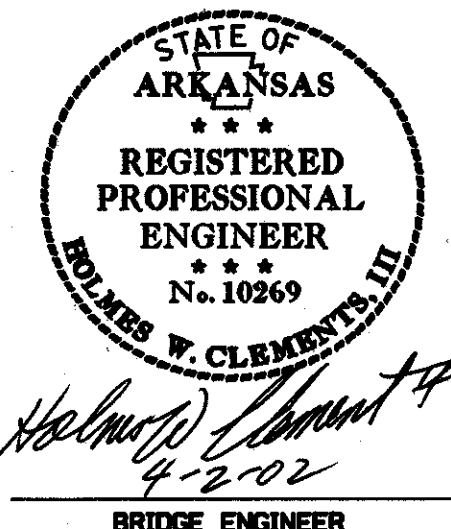


Stud Shear Connectors shown shall be 7/8" x 4" long, granular flux filled, solid fluxed or equal, and automatically end welded to the beam flange in accordance with the recommendations of the Manufacturer. 3/4" studs may be used in place of the 7/8" studs shown, at the ratio of 1,361 - 3/4" studs in place of one 7/8" stud. 7/8" studs will be used as basis for measurement of structural steel in shear connectors. Maximum stud spacing = 24".

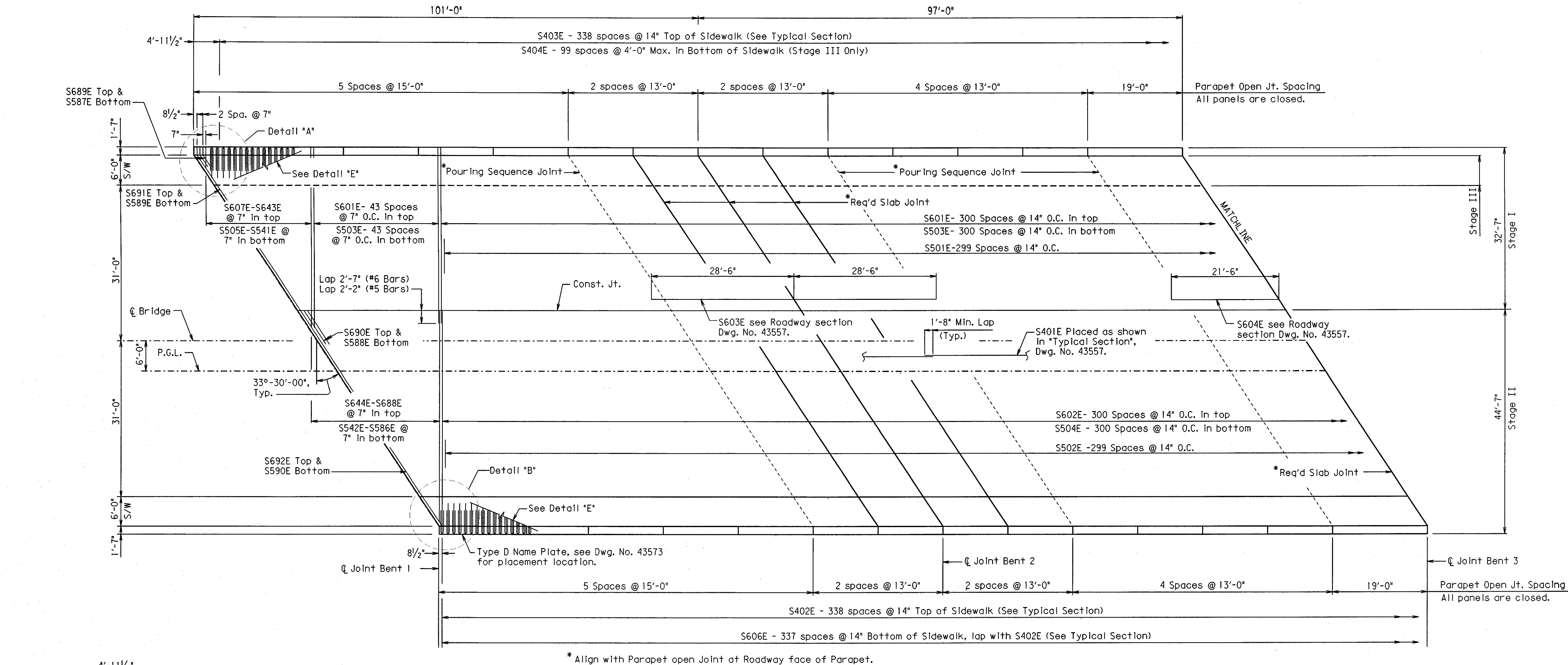
SHEAR CONNECTOR DETAIL

Note:
All Bents are Parallel.
Crossframes & connection plates shall be AASHTO M270, Gr. 36 steel.

SHEET 4 OF 12
DETAILS OF 400'-0" CONTINUOUS PLATE GIRDER UNIT
STATE HWY 183 OVER I-30
WEST OF ALCOA RD -
WEST OF PULASKI CO. LINE
SALINE COUNTY
ROUTE 30 SEC. 22
ARKANSAS STATE HIGHWAY COMMISSION
LITTLE ROCK, ARK.
DRAWN BY: CAB DATE: 4-1-02 FILENAME: BB60121X1.S4
CHECKED BY: HWC DATE: 4-1-02 SCALE: None
DESIGNED BY: DPD DATE: 5-30-01
BRIDGE NO. 06910 DRAWING NO. 43560

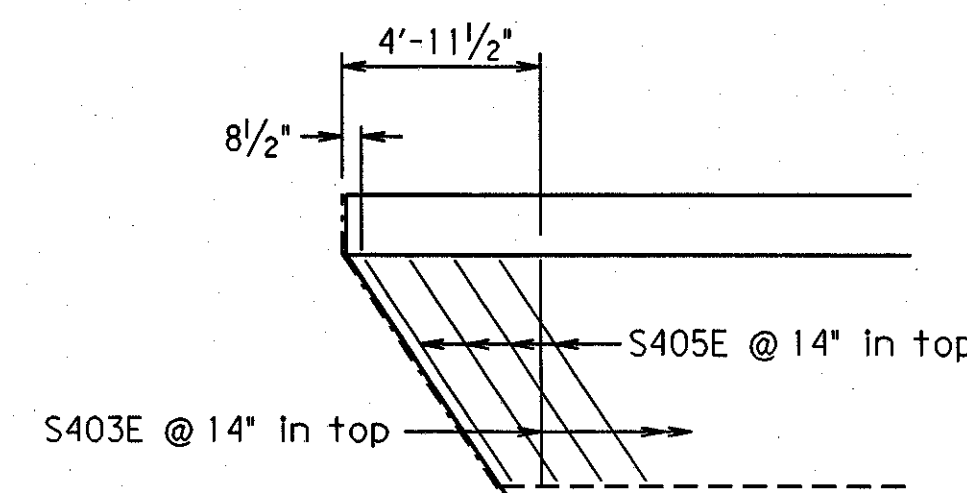


DATE REVISED	DATE FILMED	DATE REVISED	DATE FILMED	FED. ROAD DIST. NO.	STATE	FED. AID PROJ. NO.	SHEET NO.	TOTAL SHEETS
				6	ARK.			
				JOB NO.		B60121	206	406
06910 DECK PLAN 43565								

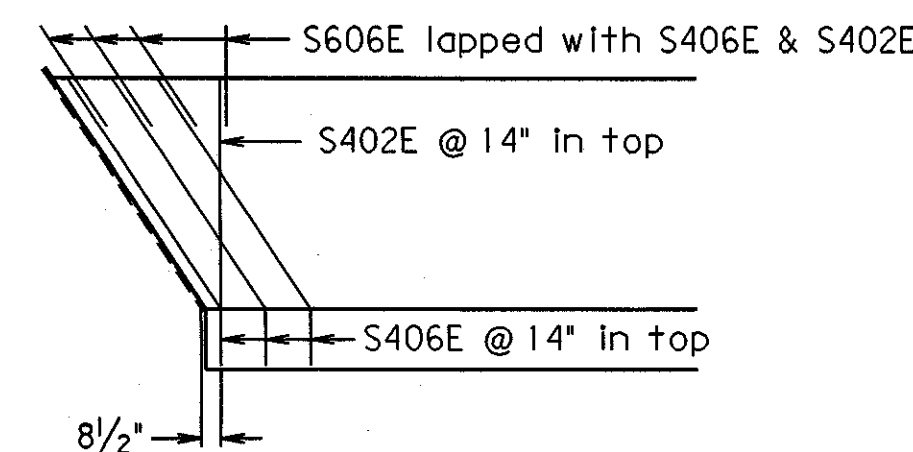


* Align with Parapet open Joint at Roadway face of Parapet.

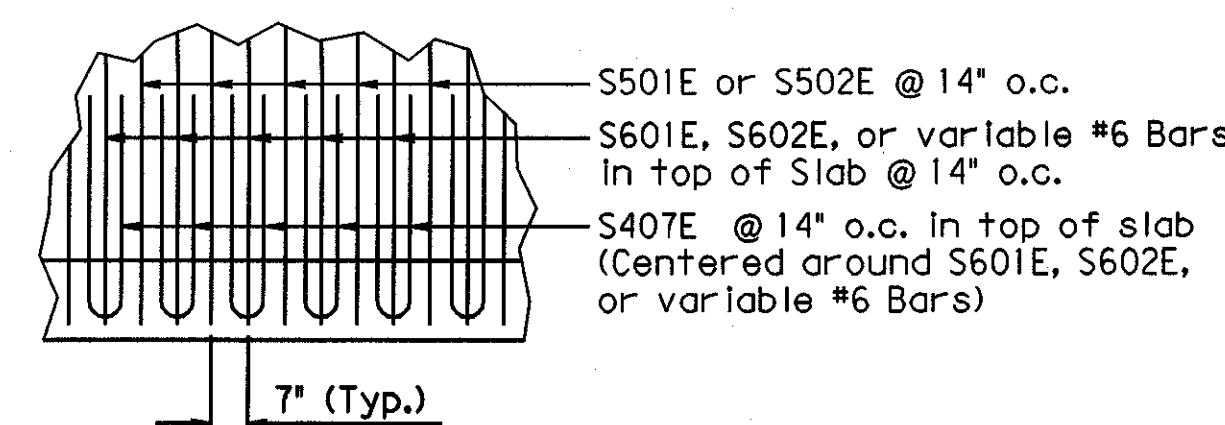
REINFORCING PLAN



DETAIL "A"
No Scale



DETAIL "B"
No Scale



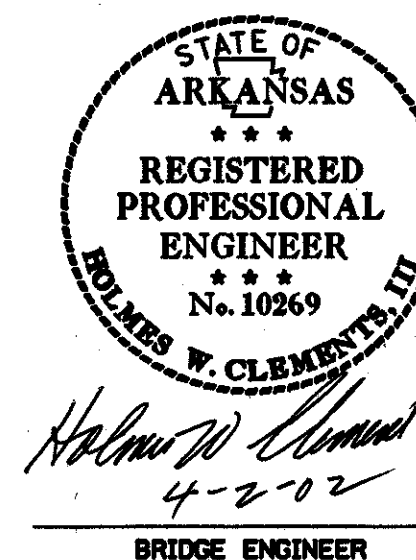
DETAIL "E"
No Scale

SIDEWALK REINFORCING DETAILS

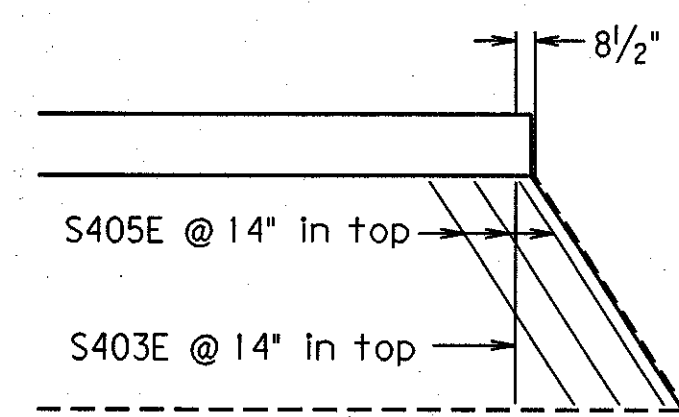
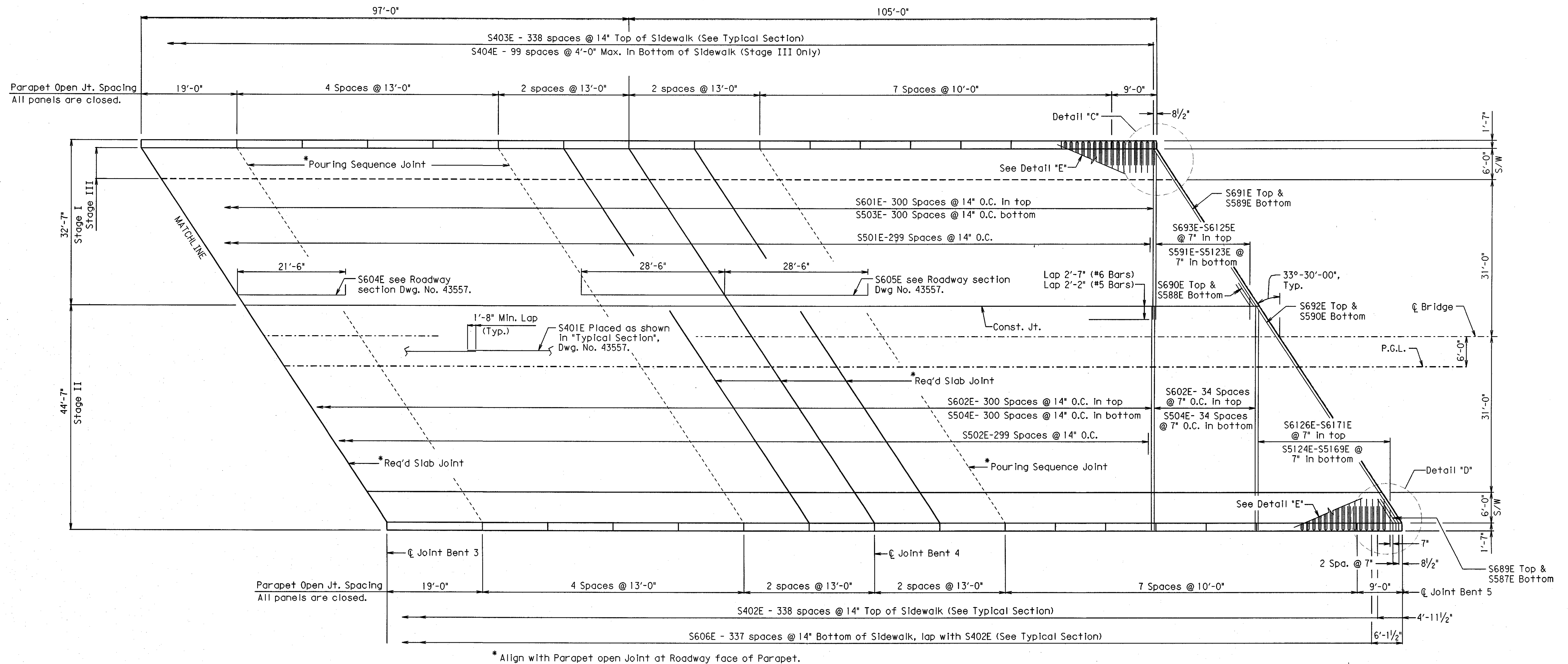
SHEET 9 OF 12
DETAILS OF 400'-0" CONTINUOUS PLATE GIRDER
STATE HWY 183 OVER I-30
WEST OF ALCOA RD -
WEST OF PULASKI CO. LINE
SALINE COUNTY

ROUTE 30 SEC. 22
ARKANSAS STATE HIGHWAY COMMISSION
LITTLE ROCK, ARK.

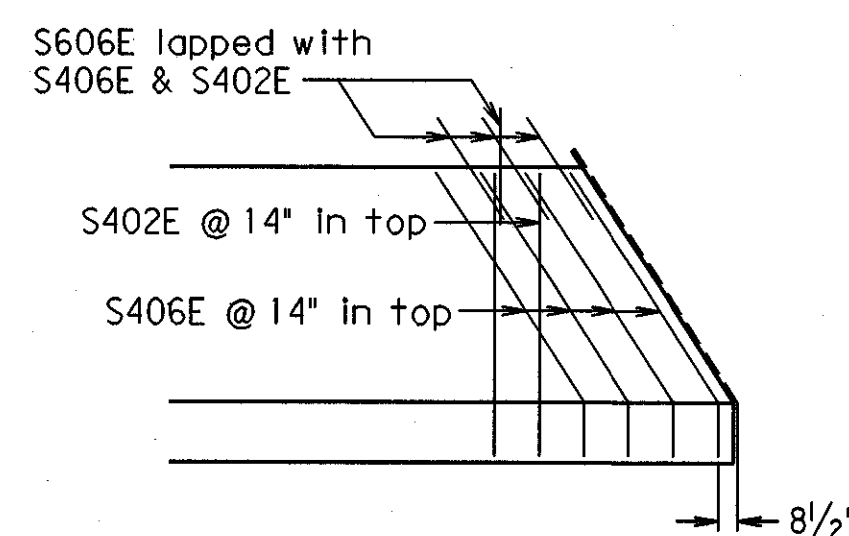
DRAWN BY: CAB DATE: 4-1-02 FILENAME: BB60121X1.S9
CHECKED BY: HWC DATE: 4-1-02 SCALE: 1"-10'
DESIGNED BY: DPD DATE: 7-26-01
BRIDGE NO. 06910 DRAWING NO. 43565



DATE REVISED	DATE FILMED	DATE REVISED	DATE FILMED	FED. ROAD DIST. NO.	STATE	FED. AID PROJ. NO.	SHEET NO.	TOTAL SHEETS
				6	ARK.			
				JOB NO.		B60121	207	406
06910 DECK PLAN 43566								

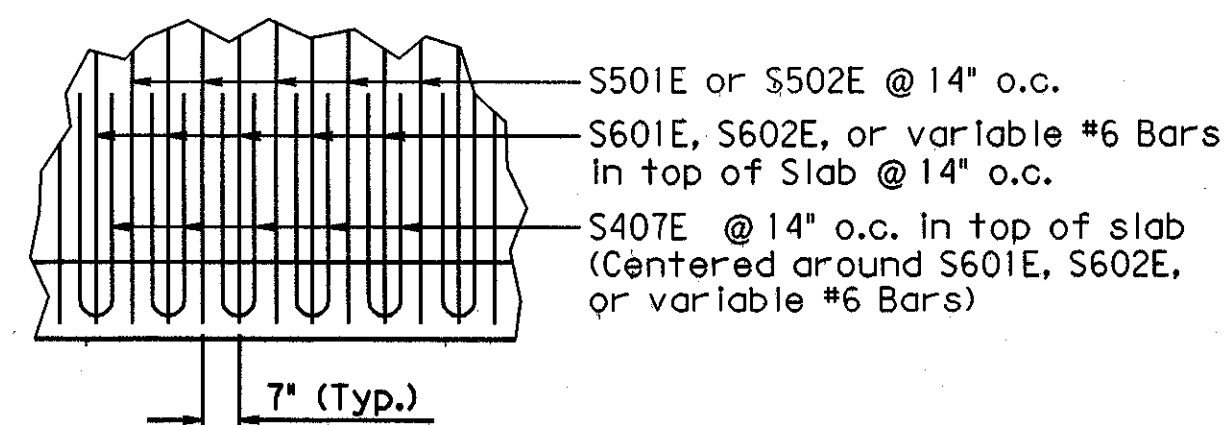


DETAIL "C"
No Scale



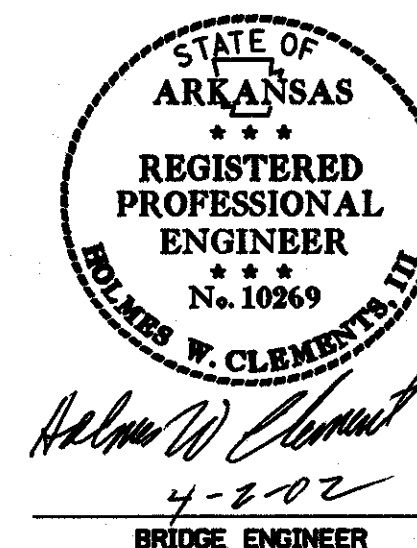
DETAIL "D"
No Scale

SIDEWALK REINFORCING DETAILS



DETAIL "E"
No Scale

REINFORCING PLAN



SHEET 10 OF 12
DETAILS OF 400'-0" CONTINUOUS PLATE GIRDER UNIT
STATE HWY 183 OVER I-30
WEST OF ALCOA RD -
WEST OF PULASKI CO. LINE
SALINE COUNTY
ROUTE 30 SEC. 22
ARKANSAS STATE HIGHWAY COMMISSION
LITTLE ROCK, ARK.
DRAWN BY: CAB DATE: 4-1-02 FILENAME: BB60121X1.S10
CHECKED BY: HWC DATE: 4-1-02 SCALE: 1"-10'
DESIGNED BY: DPD DATE: 7-27-01
BRIDGE NO. 06910 DRAWING NO. 43566