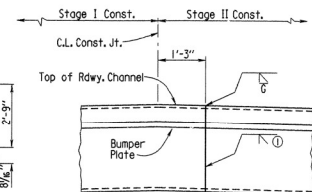




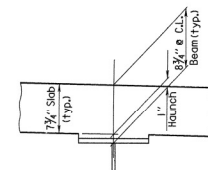
①	6464	SPAN DTLS.	32847
---	------	------------	-------



EXPANSION DEVICE AT STAGE CONST. JOINT

No Scale

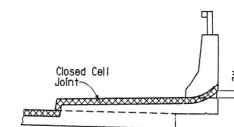
① Grind flush from top of deck to top of bumper plate



DETAIL A

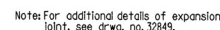
No Scale

Note: Haunch is required. Slab may be thickened and/or the haunch thickened to maintain slab tolerance. Tolerance is minus  $\frac{1}{4}$ " and plus 1". No adjustment for increase in concrete and structural steel quantities will be made for haunches or any thickness of slab to meet tolerances.



JOINT SEAL PLACEMENT AT CURB

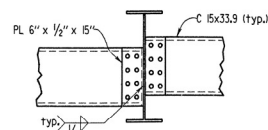
No Scale



RDWY. SECTION AT EXPANSION DEVICE

Scale:  $\frac{3}{8}'' = 1'-0''$

Note: Section is taken at end of unit

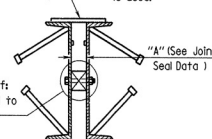
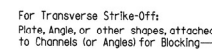


DIAPHRAGM CONNECTION A

ACM COL

DIAPHRAGM CONNECTION B

No Scale



For Longitudinal Strike-Off:  
Bolt and spacer attached to  
channel for blocking.

Note: One of two different blocking systems is required depending on the type of span finishing machine that is used.

Note: Blocking Detail shown for joint at Int. Bent. Joint at End Bent is similar.

### DETAILS FOR BLOCKING EXPANSION JOINT DEVICE

$$1\frac{1}{2}'' = 1'-0''$$

Note: Each expansion joint device shall be blocked in the shop by the fabricator to the dimension "A", and the blocking details shall be shown on the Shop Drawings. The blocking shall not be removed until the slab on one side is complete. Blocking shall be placed within 2 feet of each end of the device and with a maximum spacing of 8 feet. Removal shall be just before or after pouring the second side of the joint, as directed by the Engineer.

Note: Bolts in Diaphragm Connections shall be properly installed and tightened in accordance with Subsection 807.22 of the Standard Specifications.

SHEET 1 OF 6  
DETAILS OF 296'-0"  
CONTINUOUS COMPOSITE W-BEAM UNIT

ROUTE 183 SEC. 1  
ARKANSAS STATE HIGHWAY COMMISSION  
LITTLE ROCK, ARK.

DRAWN BY: KMG DATE: 21 Jan 92  
 CHECKED BY: WBM DATE: 10-7-92 SCALE: As Shown  
 DESIGNED BY: CSL DATE: Oct. 91  
 BRIDGE NO. 6464 DRAWING NO. 32847

(1,550,300|,60375)KMGE510

B60575.S11