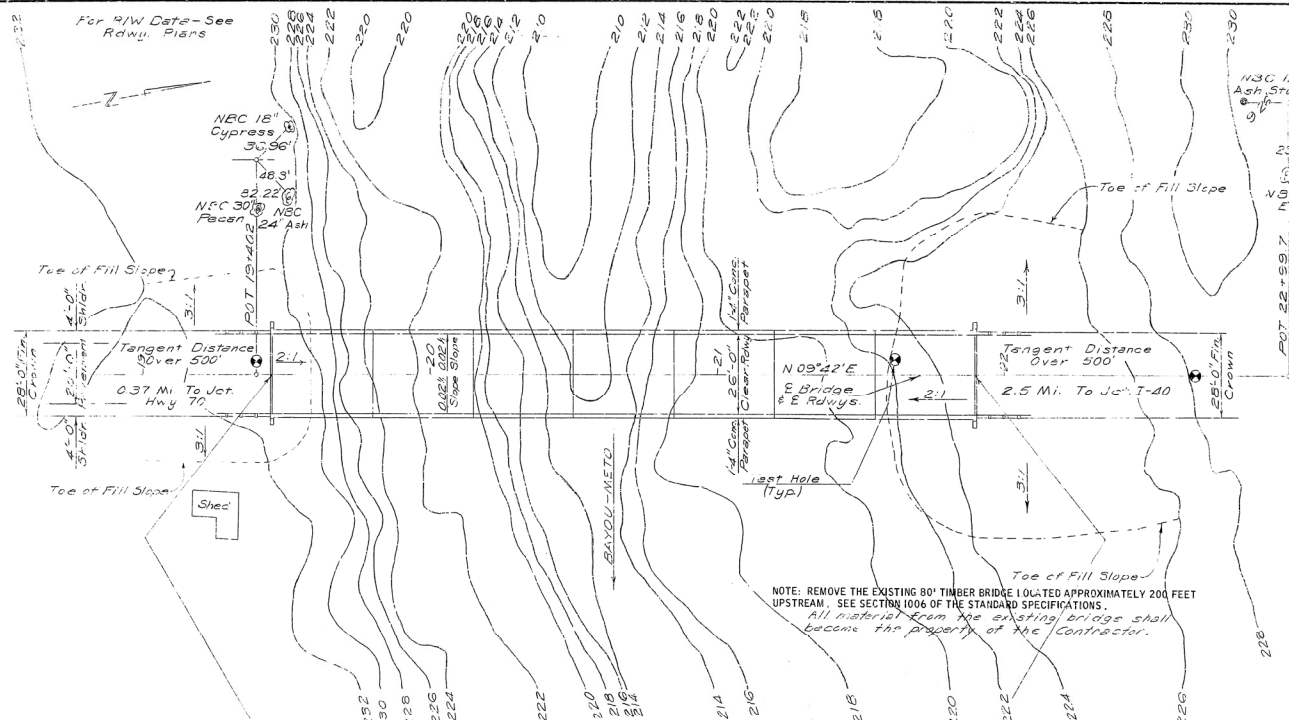


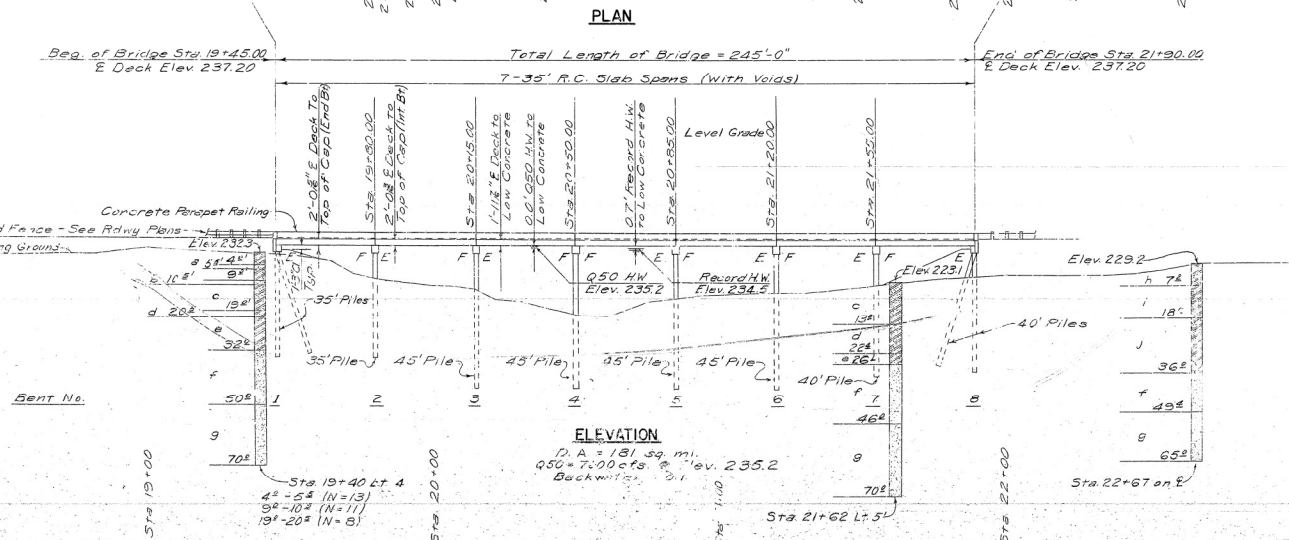
DATE REVISED	DATE FILMED	DATE REVISED	DATE FILMED	FED. ROAD NO.	STATE	FED. AID PROJ. NO.	FISCAL YEAR	SHEET NO.	TOTAL SHEETS
				6	ARK.			6353	1456
				JOB NO. 5481 31 Layout 1-018					



Use Type J Approach Gutter
At Both Ends of Bridge. See Dwg. 5481

GENERAL NOTES

BENCH MARK - RAILROAD SPIKE IN ROOT OF 30\"/>



ALL CONCRETE SHALL BE POURED IN THE DRY.

PILING IN BENTS 1, 2, 7 & 8 SHALL BE 16\"/>

- BORING LOG
- a. BROWN SANDY CLAY
 - b. BROWN SAND
 - c. SOFT BROWN SANDY CLAY - WET
 - d. GRAY SANDY CLAY
 - e. MED. FIRM GRAY SANDY CLAY
 - f. FIRM FINE GRAY WATER BEARING SAND
 - g. COMP. MED. COARSE GRAY WATER BEARING SAND
 - h. SOFT BROWN SANDY CLAY
 - i. MED. FIRM BROWN SANDY CLAY
 - j. MED. FIRM GRAY SANDY CLAY - WET

LAYOUT OF BRIDGE
OVER BAYOU-METO
HWY. 70-I-40
LONOKE COUNTY
ROUTE 15 SEC. 11
ARKANSAS STATE HIGHWAY COMMISSION
LITTLE ROCK, ARK.

BRIDGE NO. 5481 DRAWING NO. 17815