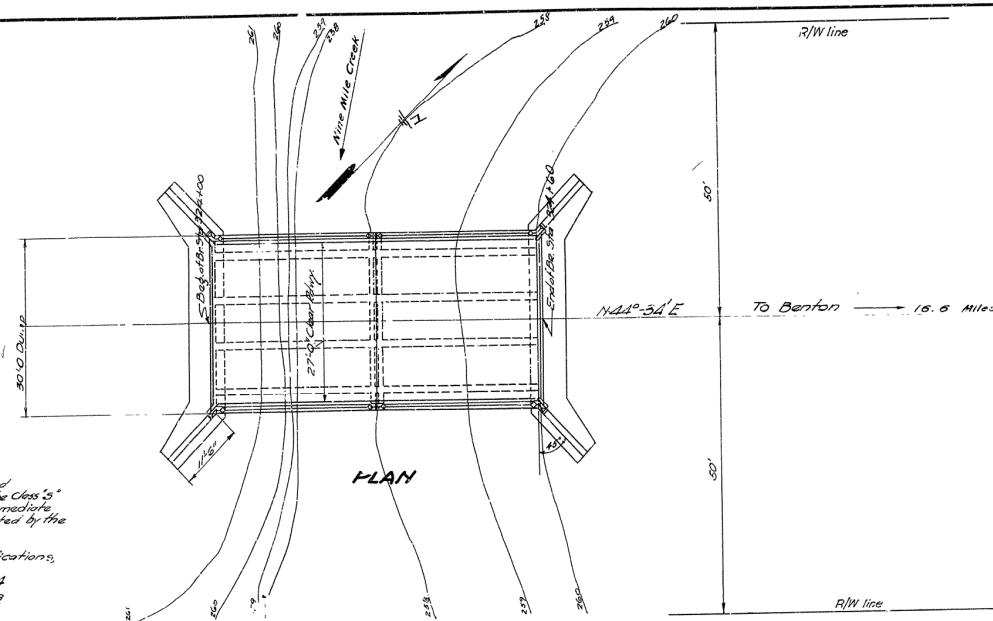


FISCAL YEAR	JOB NO.	SHEET NO.	TOTAL SHEETS
1930	692	10	27

P.C. ROAD	P.C. STA.	P.T. STA.	TOTAL
2826	190	10	27

Sta. 322+85.6 P.O.T.

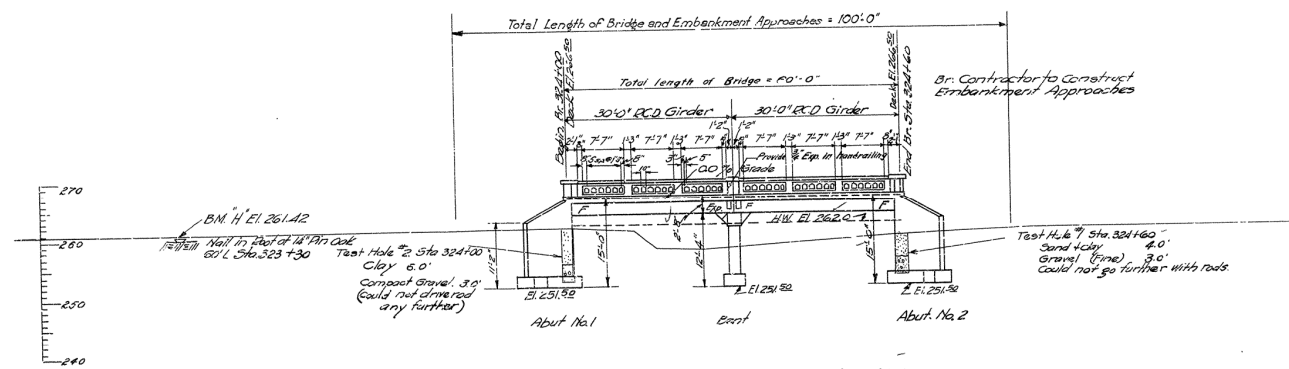
62 Miles to Malvern



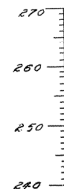
GENERAL NOTES
 All exposed corners to have $\frac{3}{4}$ " chamfer unless otherwise noted.
 All concrete in substructure to be Class B Superstructure to be Class C.
 Reinforcing Steel to be deformed bars of structure or intermediate grade. Shop List and Bending Diagrams must be submitted by the Contractor before fabrication is begun.
 Concrete in substructure to be poured in the dry.
 Specifications: Arkansas Standard Road & Bridge Specifications, adopted May 30, 1928 and revised.
 For Details of Superstructure See Drawing No. 2554.
 For " " Substructure " " " 2859.
 For " " Handrails " " " 2861.

QUANTITIES:

Item No.	Description	Quantity
12	Common Excavation	373 Cu Yds
13	Dry Excavation	62 "
14	Wet " "	260 "
15	Rock " "	55 "
34	Class "C" Concrete	107.12 "
35	" " " "	90.08 "
55	Reinforcing Steel	29,819 Lbs
74	Concrete Paving	122.8 "

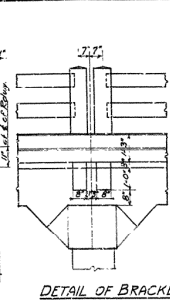
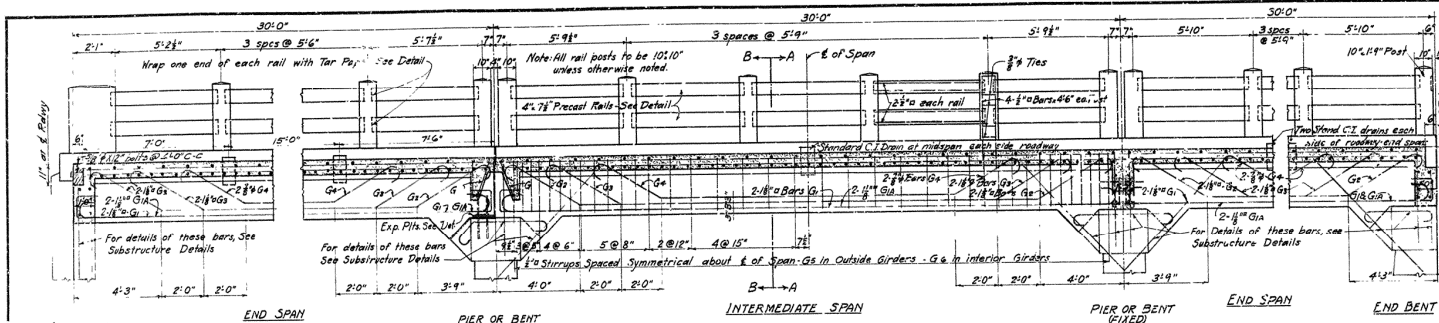


ELEVATION BR. NO. 1434

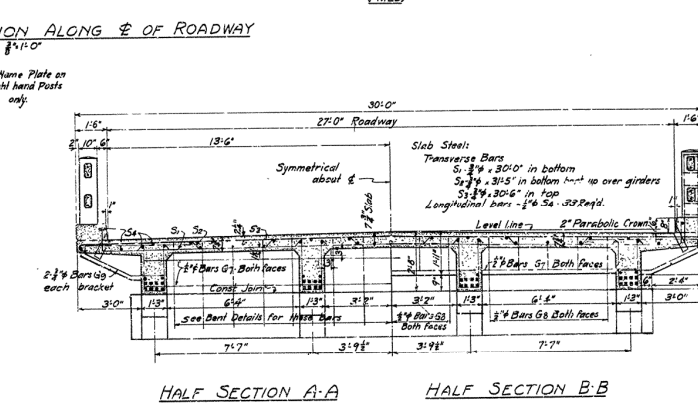
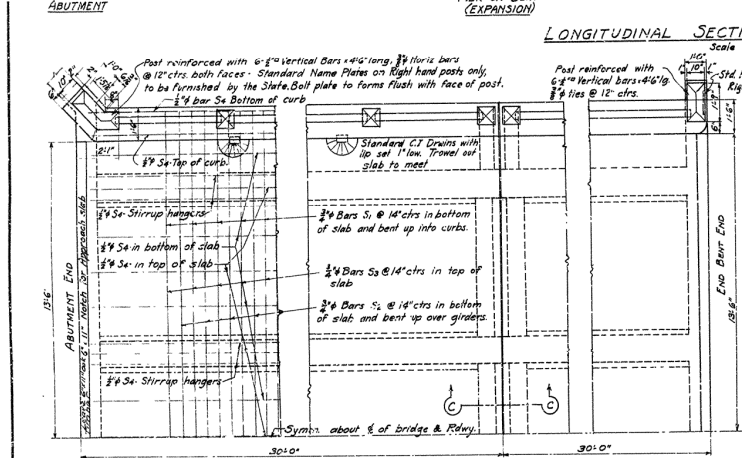


**LAYOUT
 BRIDGE OVER
 NINE MILE CREEK
 BENTON-MALVERN ROAD
 HOT SPRING CO.
 ROUTE 67 SEC. 8
 ARKANSAS STATE HIGHWAY COMMISSION
 LITTLE ROCK, ARK.
 Drawn By: L. J. ... Date: 2/28/30
 Traced By: M. J. ... Date: 2-21-30
 Checked By: J. B. ... Date: 1/23/30
 Bridge No. 1434 DRAWING No. 2857**

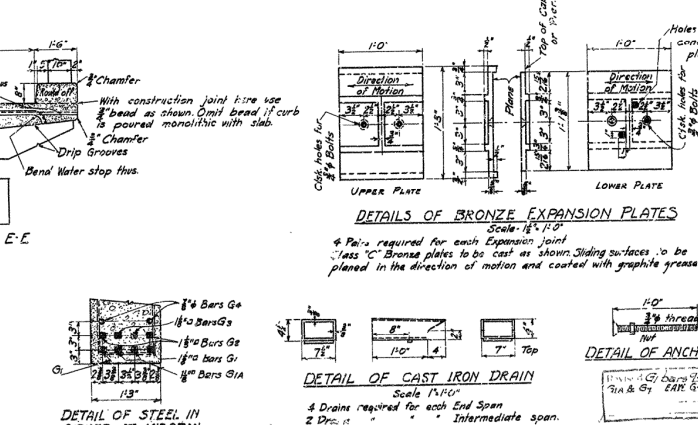
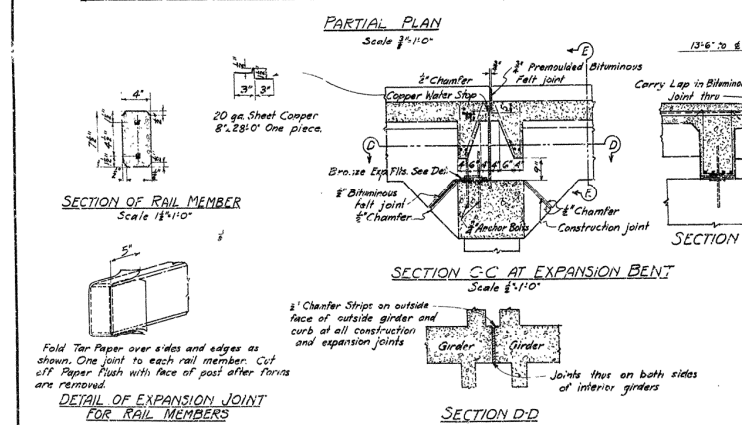
N.B. ...
 BRIDGE ENGINEER



FISCAL YEAR		SHEET TOTAL	
1960-61		201	
PC	STATE	DES.	AS
6	Ark.	7	Ark.



MARK	SIZE	LENGTH	BENDING DIAGRAM
S	1/4"	30'-0"	
S ₂	3/4"	31'-5"	
S ₃	3/4"	30'-0"	
G ₁	1 1/2"	33'-8"	
G ₂	1 1/2"	31'-0"	
G ₃	1 1/2"	31'-8"	
G ₄	1 1/2"	27'-8"	
G ₅	1 1/2"	27'-8"	
G ₆	1 1/2"	31'-2"	
G ₇	1 1/2"	27'-2"	
G ₈	1 1/2"	27'-2"	
G ₉	1 1/2"	31'-2"	
G ₁₀	1 1/2"	31'-2"	
G ₁₁	1 1/2"	31'-2"	
G ₁₂	1 1/2"	31'-2"	
G ₁₃	1 1/2"	31'-2"	
G ₁₄	1 1/2"	31'-2"	
G ₁₅	1 1/2"	31'-2"	
G ₁₆	1 1/2"	31'-2"	
G ₁₇	1 1/2"	31'-2"	
G ₁₈	1 1/2"	31'-2"	
G ₁₉	1 1/2"	31'-2"	
G ₂₀	1 1/2"	31'-2"	



GENERAL NOTES
 All exposed corners to have 3" chamfer unless otherwise noted.
 Precast concrete hand rails to be 1:2 Max. Maximum aggregate 3/4".
 All concrete above top of Bent Caps, except handrails, to be Class S.
 Reinforcing steel to be deformed bars of Structural or Intermediate grade. Shop List and Bending Diagrams must be submitted by the Contractor before fabrication is begun.
 Roadway Drains and expansion devices to be paid for at Unit price bid for Reinforcing steel.
 Specifications: Arkansas Road and Bridge Specifications adopted May 30, 1955, and revised.
 Unit Stresses: 5,000 #/sq. in. for concrete; 18,000 #/sq. in. for steel.
 Loading: H-15.
 All dimensions shown are center to center of bars.

DETAILS OF STANDARD 30'-0" RC DECK GIRDER
 4 GIRDER TYPE
 27'-0" CLEAR ROADWAY
 ROUTE 262 SEC. 10

ARKANSAS STATE HIGHWAY DEPARTMENT
 LITTLE ROCK, ARK.

Drawn By: _____ Date: _____ Scale: in. = ft.
 Traced By: _____ Date: _____
 Checked By: _____ Date: _____
 Bridge No. 235-4 DRAWING NO. 235-4