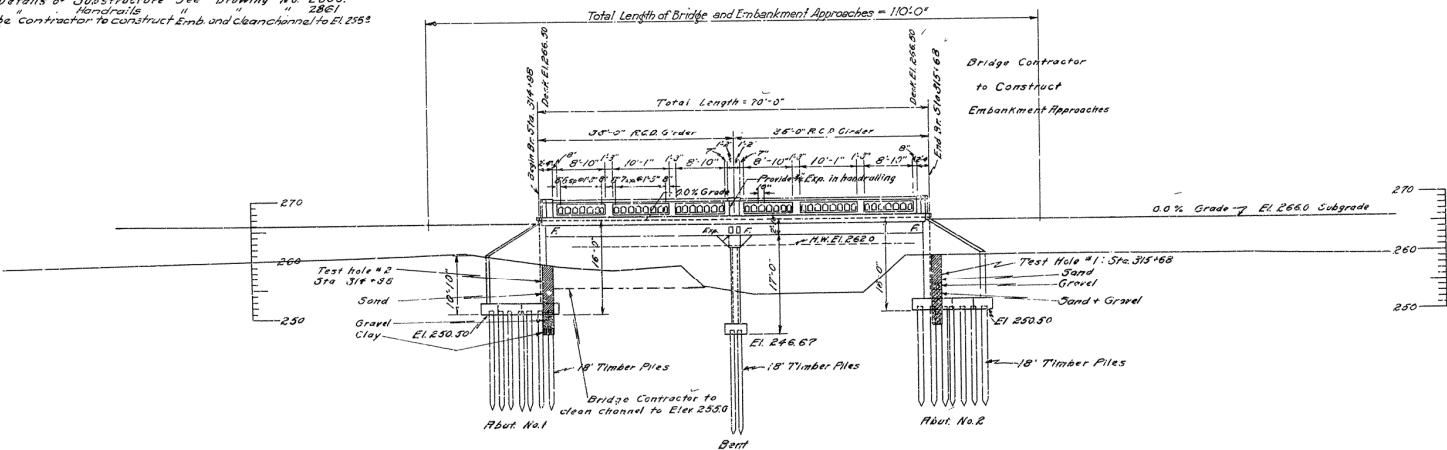


QUANTITIES:

Item No	Description	550 Cu Yds.
13	Dry Excavation	242
13	Wet	212
54	Class "A" Concrete	143.28
54	" " " " " "	89.02
54	Reinforcing Steel	89.31 Lbs
54	Concrete Paving	143.28
#	SP-192 6" treated sand	3.68

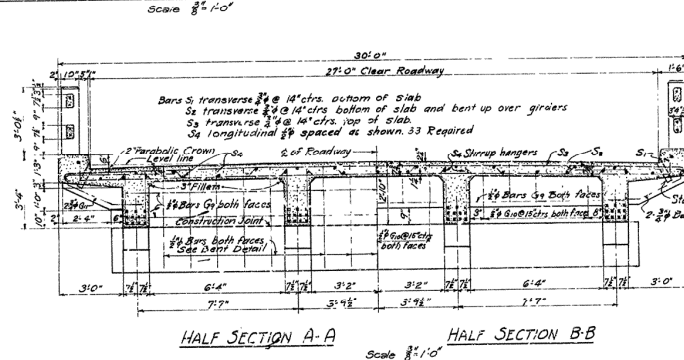
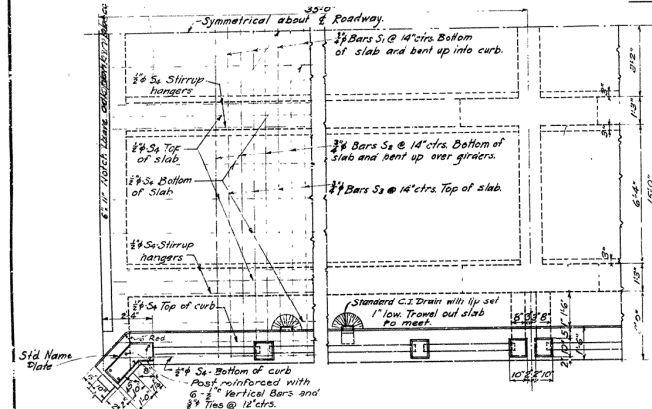
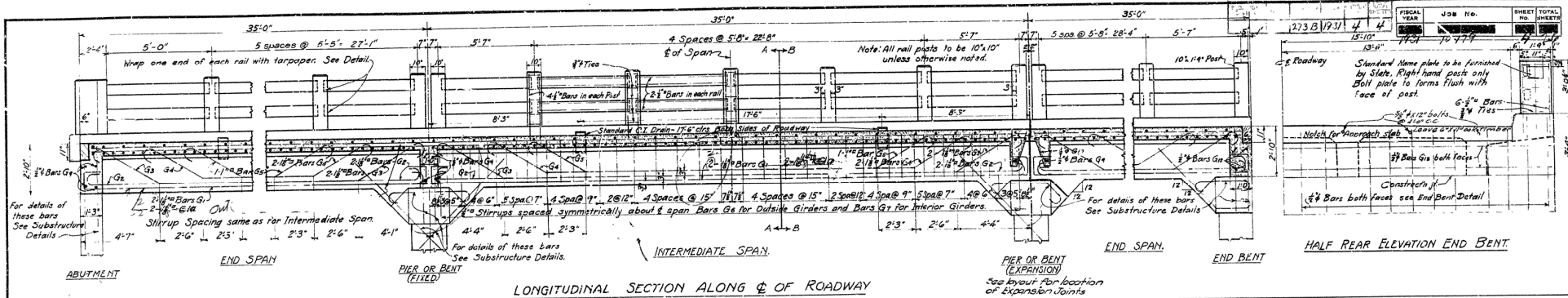
GENERAL NOTES:

All concrete criteria to be changed *if* unless otherwise noted.
All concrete in Substructure to be Class "B". Superstructure to be Class "S".
 Reinforcing Steel to be deformed bars of Structural or Intermediate
 grade. Shop list and Bending Diagrams must be submitted by the
 Contractor before fabrication is begun.
 Concrete in Substructure to be poured in the dry.
 Specifications: - Arkansas Standard Road and Bridge
 Specifications, adopted May 30, 1925 and revised.
 For Details of Superstructure see Drawing No. 2355.
 For Details of Substructure see Drawing No. 2356.
 Bridge Contractor to construct Emb. and Clear Channel to EL 2353

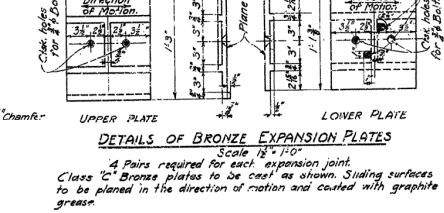
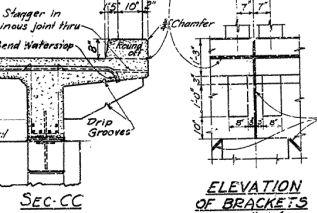
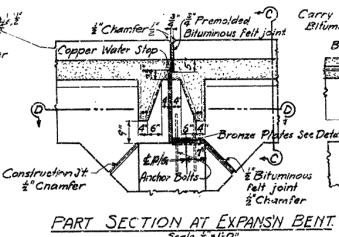
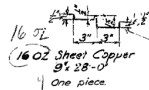
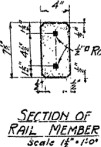


ELEVATION BRIDGE No. 1433

LAYOUT
BRIDGE OVER REYNOLD CREEK
BENTON-MAKVEN ROAD
HO-11-TRING CO.
ROUTE 67 SEC. 8
ARKANSAS STATE HIGHWAY COMMISSION
LITTLE ROCK, ARK.
Drawn By: Geo. Ziegler
Traced By: Geo. Ziegler
Checked By: JD Date: 12-28-50
BRIDGE NO. 1433 DRAWING NO. 2865



MARK	SIZE	LENGTH	BENDING DIAGRAM
S1	3/8"	30'-0"	
S2	3/8"	31'-5"	
S3	3/8"	30'-6"	
G1	1/2"	28'-0"	
G2	1/2"	36'-2"	
G3	1/2"	36'-2"	
G4	1/2"	36'-2"	
G5	1/2"	36'-2"	
G6	1/2"	36'-2"	
G7	1/2"	36'-2"	
G8	1/2"	36'-2"	
G9	1/2"	36'-2"	
G10	1/2"	36'-2"	
G11	1/2"	36'-2"	
G12	1/2"	36'-2"	
G13	1/2"	36'-2"	
G14	1/2"	36'-2"	
G15	1/2"	36'-2"	
G16	1/2"	36'-2"	
G17	1/2"	36'-2"	
G18	1/2"	36'-2"	
G19	1/2"	36'-2"	
G20	1/2"	36'-2"	



GENERAL NOTES
All exposed corners to have 3/4" chamfer unless otherwise noted.
Precast concrete hand rails to be 14" x 24" x 12" Min. Use aggregate 3/4" max.
All concrete above top of Bent Caps, except handrails to be Class "S".
Reinforcing steel to be deformed bars of Structural or Intermediate grade.
Shop List and Bending Diagrams must be submitted by the Contractor before fabrication is begun.
Roadway Drains & Expansion Devices to be paid for at Unit price bid for Reinforcing steel.
Specifications: Arkansas Road & Bridge Specifications adopted May 30, 1925 and revised.
Unit Stresses: $f_c = 10,000 \text{ psi}$, $f_s = 75,000 \text{ psi}$, $n = 15$.
Live Loading: HS 20-44.
All dimensions shown are center to center of bars.

DETAILS OF STANDARD 35'-0" R.C. DECK GIRDER
4 GIRDER TYPE
27'-0" CLEAR ROADWAY
ROUTE 100 SEC. 10

ARKANSAS STATE HIGHWAY DEPARTMENT
LITTLE ROCK, ARK.
Drawn By: J. D. D. Date: 12-30-29
Traced By: _____
Checked By: _____
Scale: in. = ft.
NO. 2355
DRAWING No. 2355

M.B. Sawyer
BRIDGE ENGINEER