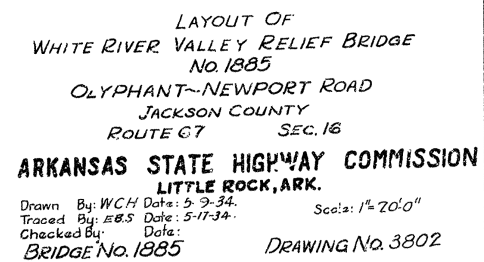
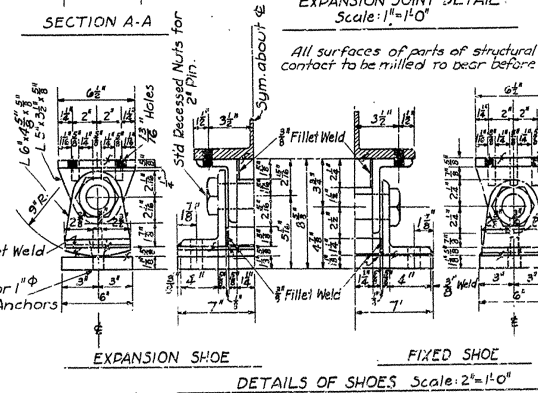
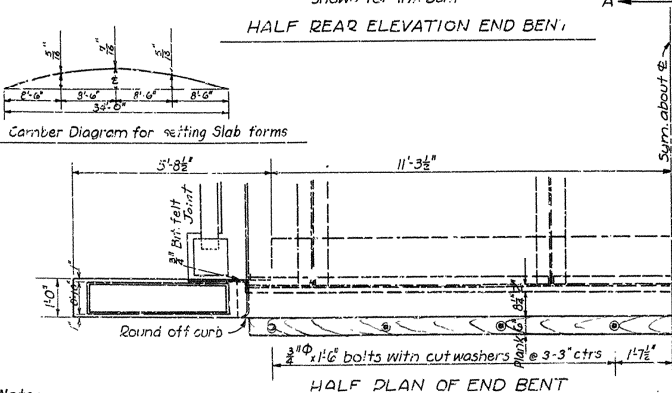
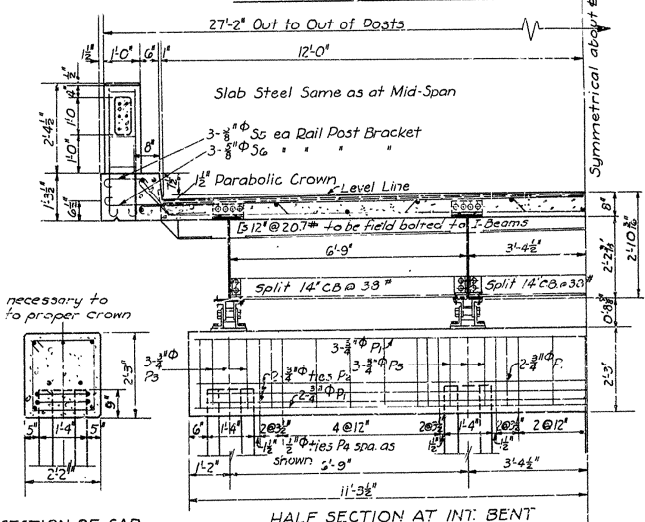
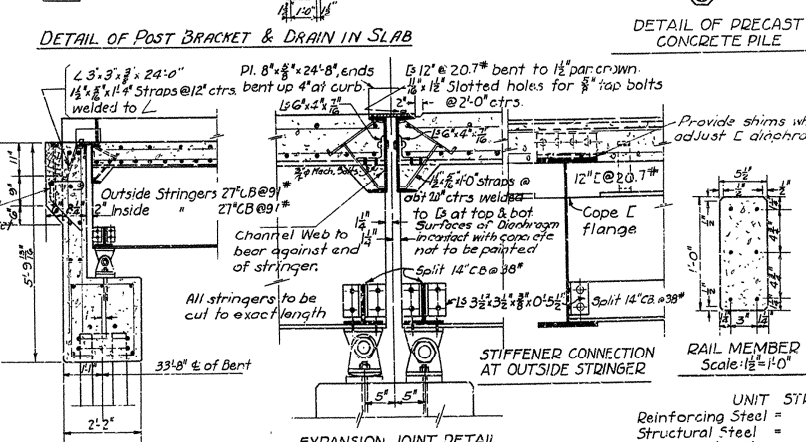
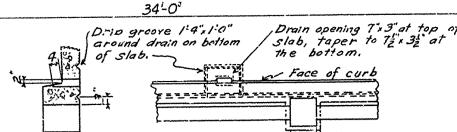
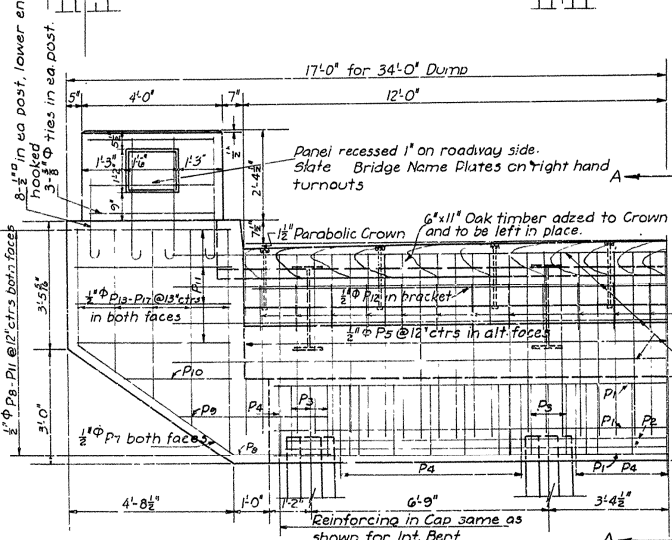
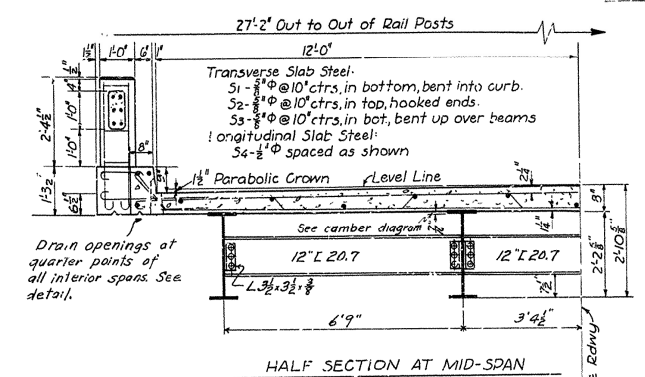
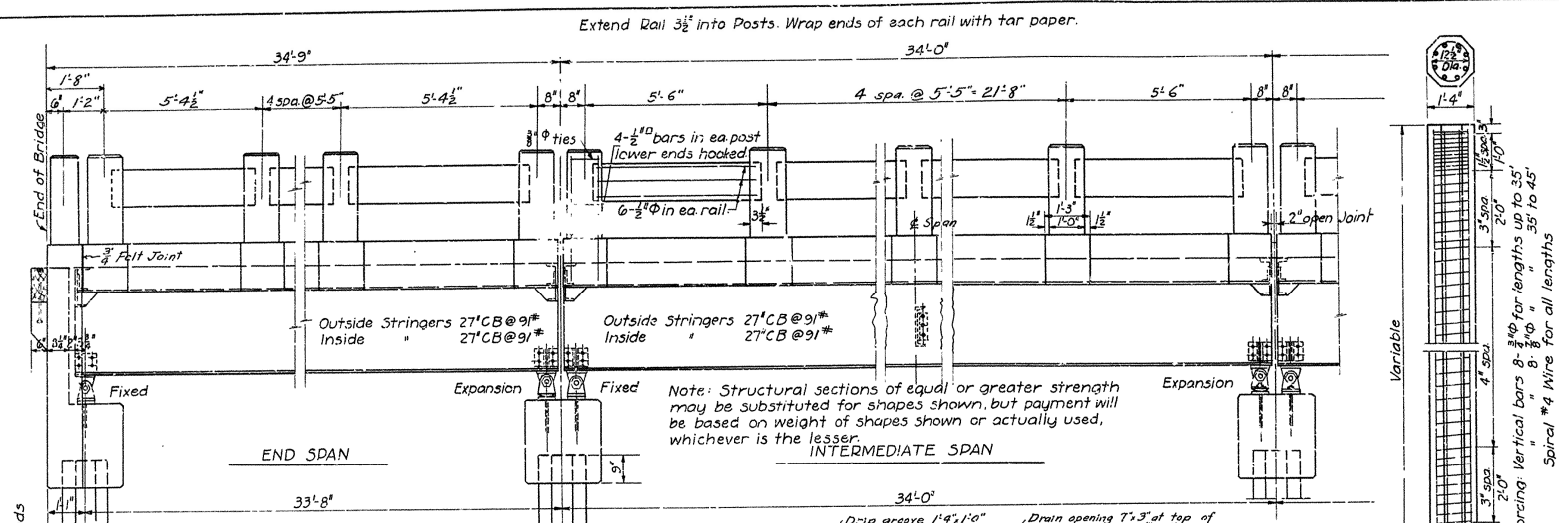


State Job No. 5163



FED. ROAD DIST. NO.	STATE	F.E.D. A.D. PROJECT NO.	FISCAL YEAR	SHEET NO.	TOTAL SHEETS
6	ARK.	134 R00	1937	33.8	76
JOB NO.					



UNIT STRESSES

Reinforcing Steel =	16,000 lbs per sq. in.
Structural Steel =	18,000 " " "
Concrete (n=12) =	800 " " "

LIVE LOAD - H15 LOADING

LIST OF BENT BARS

Mark	Size	Length	BENDING DIAGRAM
P2	3/8"	47'-7"	
P3	3/8"	5'-5"	
P4	3/8"	7'-11"	
S1	3/8"	26'-9"	
S2	3/8"	25'-10"	
S3	3/8"	26'-8"	
S5	3/8"	4'-2"	
S6	3/8"	3'-0"	
P10	1/2"	3'-0"	

DETAILS OF STANDARD 34'-0" I-BEAM SPAN CONCRETE DECK, 24'-0" CLEAR ROADWAY FOUR I-BEAM GIRDERS, CONCRETE PILE BENTS

ARKANSAS STATE HIGHWAY COMMISSION
LITTLE ROCK, ARK.

Drawn by: WCH Date: 5-2-34
Traced by: A. Date: 5-10-34 Scale: 1/2" = 1'-0" (Exceptions noted)
Checked by: Date:
BRIDGE NO. DRWG NO. 2159

Note: In order to insure a good riding surface, it will be required that the floor slab be struck off from curb to curb with a full span length longitudinal screed. The screed shall be sufficiently stiff as to have no appreciable vertical deflection.

Note: Masonry Plates shall finally be seated on 3 layers of Burlap saturated with Red Lead. This work and material to be included in the price bid for Structural Steel.