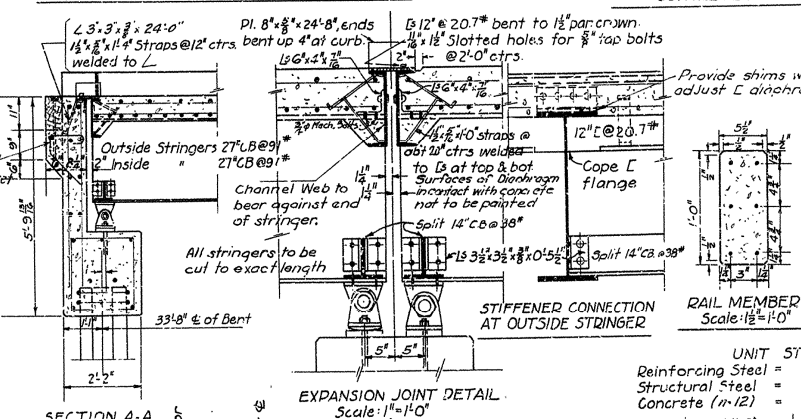
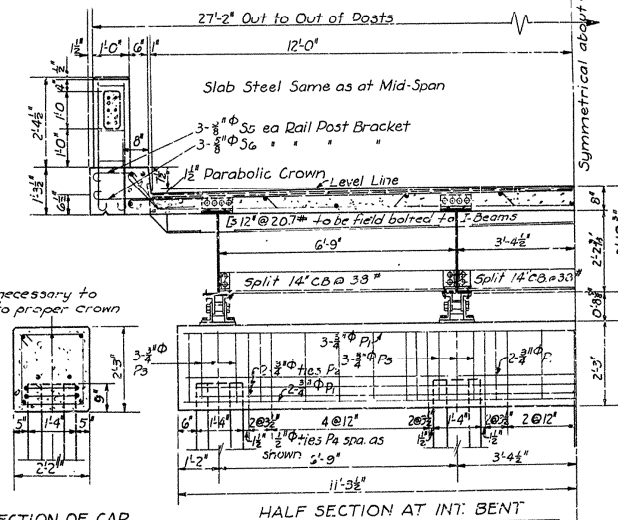
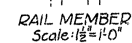


DETAIL OF POST BRACKET & DRAIN IN SLAB

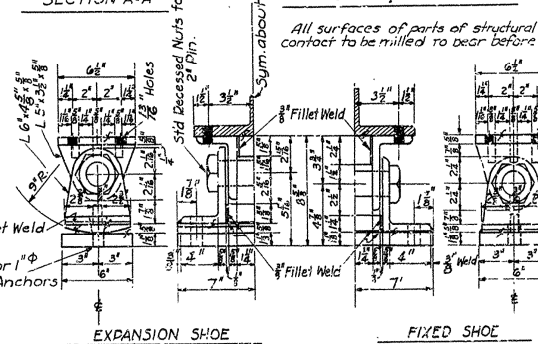


SECTION A-A

EXPANSION JOINT DETAIL
Scale: 1"=1'-0"



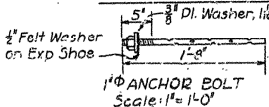
SECTION OF CAP



EXPANSION SHOE

FIXED SHOE

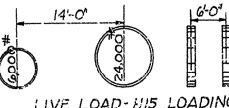
DETAILS OF SHOES Scale: $2'' = 1'-0''$



Scale: 1" = 1'-0"

UNIT STRESSES

Reinforcing Steel =	16,000 lbs per sq.in
Structural Steel =	18,000 " " " "
Concrete (11/12) =	800 " " " "



LIVE LOAD-HIS LOADING

LIST OF BENT BARS

Mark	Size	Length
P ₂	$\frac{3}{8}" \Phi$	47'-7"
P ₃	$\frac{3}{8}" \Phi$	5'-5"
P ₄	$\frac{1}{2}" \Phi$	7'-11"
S ₁	$\frac{3}{8}" \Phi$	26'-9"
S ₂	$\frac{3}{8}" \Phi$	25'-10"
S ₃	$\frac{3}{8}" \Phi$	26'-8"
S ₅	$\frac{3}{8}" \Phi$	4'-2"
S ₆	$\frac{3}{8}" \Phi$	3'-6"
P ₁₀	$\frac{1}{2}" \Phi$	3'-0"

BENDING DIAGRAM

DETAILS OF STANDARD
34'-0" I-BEAM SPAN
CONCRETE DECK, 24'-0" CLEAR ROADWAY
FOUR I-BEAM GIRDERS,
CONCRETE PILE BENTS

ARKANSAS STATE HIGHWAY COMMISSION
LITTLE ROCK, ARK.

Drawn by: W.C.H Date: 5-2-34
Traced by: A. Date: 5-10-34 Scale: $\frac{1}{2}'' = 1'-0''$ (Exceptions noted)
Checked by: Date:

HALF PLAN

Note:

In order to insure a good riding surface, it will be required that the floor slab be struck off from curb to curb with a full span length longitudinal screed. The screed shall be sufficiently stiff as to have no appreciable vertical deflection.

Note.
Masonry Plates shall finally be coated
on 3 layers of burlap saturated with
Red Lead. This work and material to be
included in the price bid for Structural
Steel

General Notes

All wire-rope to be Class "S". All exposed corners to have chamfers unless otherwise shown.

Show lists and bending diagrams of reinforcing steel must be submitted and approved before fabrication is begun.

Oak header bolts, and bituminous felt joints are to be paid for at unit prices bid for reinforcing steel.

Volume 1, ruled by Oak header plank is included in volume of Class "S" concrete.

$\frac{3}{4}$ " rivets, $\frac{3}{4}$ " open holes. All field connectors shall be riveted, except as noted.

Shop paint: All structural steel shall be given one coat of Red Lead and Raw Linseed Oil before shipment; except Field paint. 1st Coat, White Lead tinted with Lump Black. 2nd Coat, Aluminum Paint.

This drawing shows general features of design only. Shop drawings shall be made in compliance with specifications and be approved before fabrication is begun.

Specifications, Arkansas State Highway Commission Standard Specifications for Road & Bridge Construction June 30th, 1936.

7784