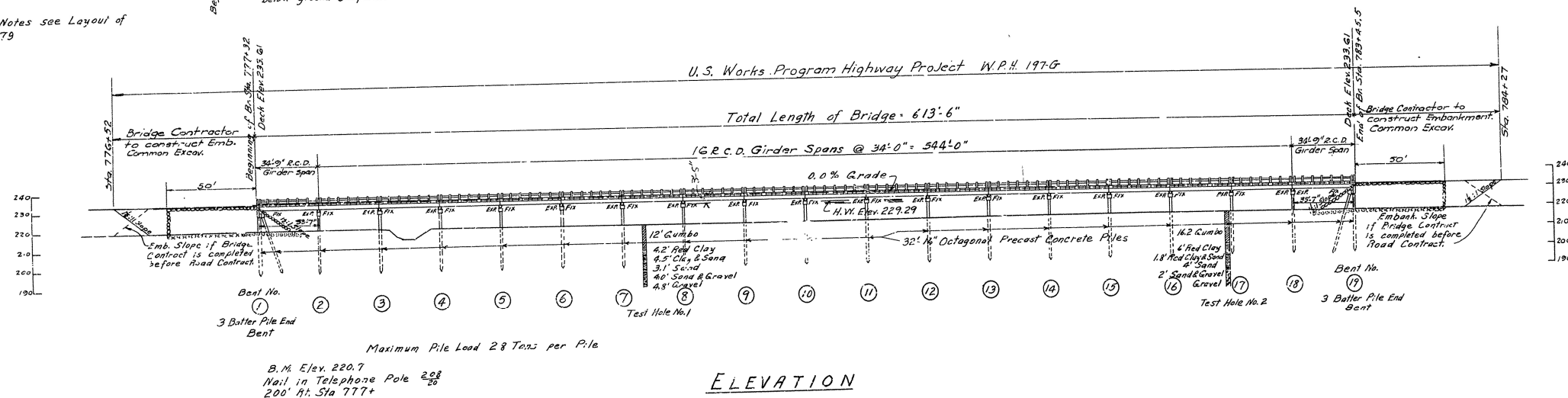
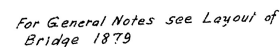


State Job No. 1159

From Sta	To Sta.	Rt. of $\angle$	Lt. of $\angle$	Total Width
760+00	792+00	100'	250'	350'

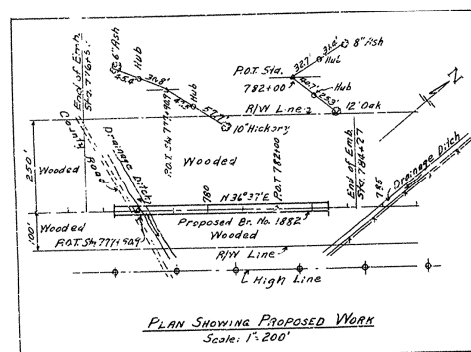
From Beginning of Bridge - Over 500  
From End of Bridge - Over 500



ELEVATION

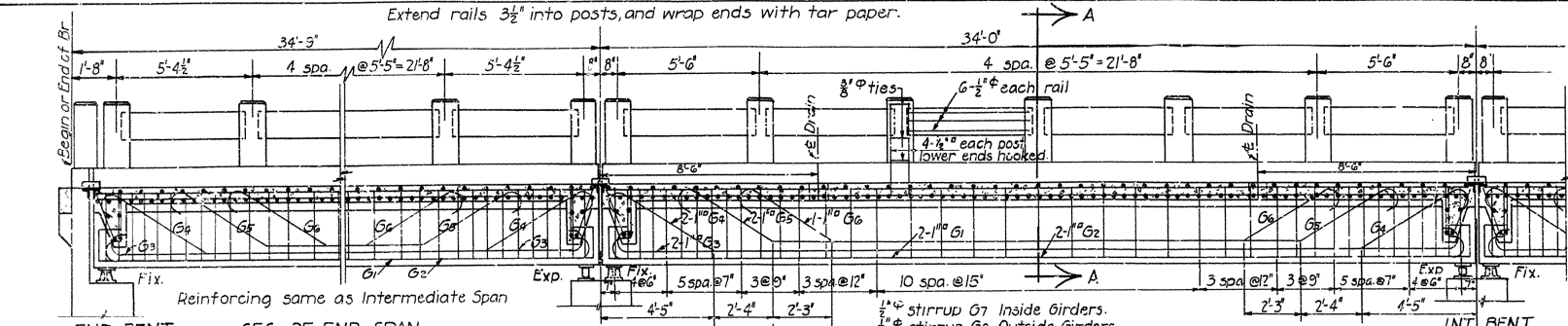
## QUANTITIES

Item No.	Item	Quantity	Unit
11	Clearing	6.2	Acres
11	Grubbing	6.2	"
12	Common Excavation	6538	Cu. Yds.
13	Dry Excav. for Structures	78	"
54	Class "A" Conc. (Prej. Marks)	0.26	"
55	Reinf. Steel ( " " )	30	Lbs.
91	Class "S" Conc. for Bridges	7753	Cu. Yds.
92	Reinf. Steel for Bridges	202,301	Lbs.
93	Concrete Piling	32/0	Lin. Ft.
93	Loading Test Pile	1	Each
94	Concrete Railing for Bridges	1240	Lin. Ft.
95	Rip Rap	624	Cu. Yds.
SP	Bronze State Br. Name Pls.	2	Each
SP	Bronze Project Marker Pls.	2	Each
Q & SP	Metal Bearing & Roadway Expansion Devices	32,750	Lbs.

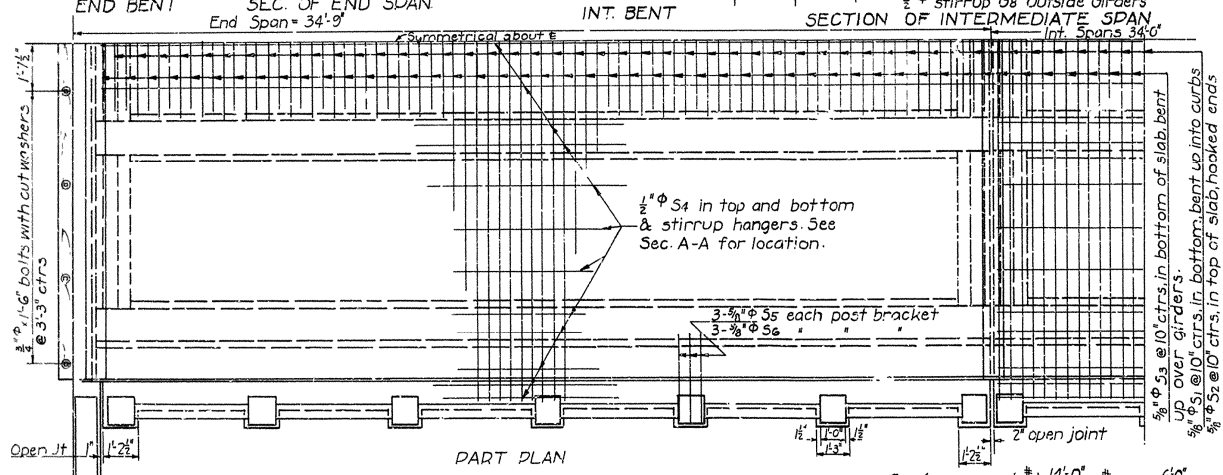
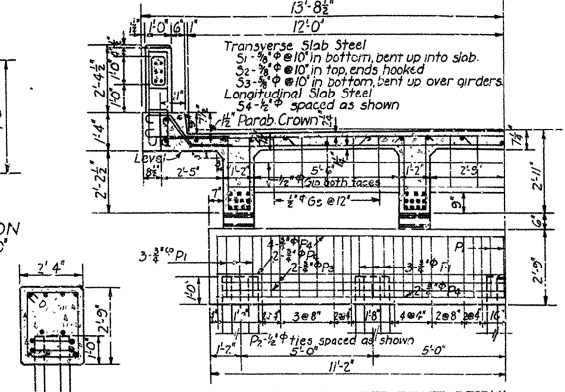


LAYOUT OF  
WHITE RIVER VALLEY RELIEF BRIDGE No. 1882  
BRADFORD-NEWPORT ROAD  
JACKSON Co.  
ROUTE 67 SECTION 16  
ARKANSAS STATE HIGHWAY COMMISSION  
LITTLE ROCK-ARK.  
Drawn by: H.B. Date: 5-3-35  
Traced by: A.G. Date: 5-17-35  
Checked by: ~~W.B.~~ Date: 8-8-35  
BRIDGE No. 1882  
Scale 1"=30' 0"  
DRWG. No. 3996

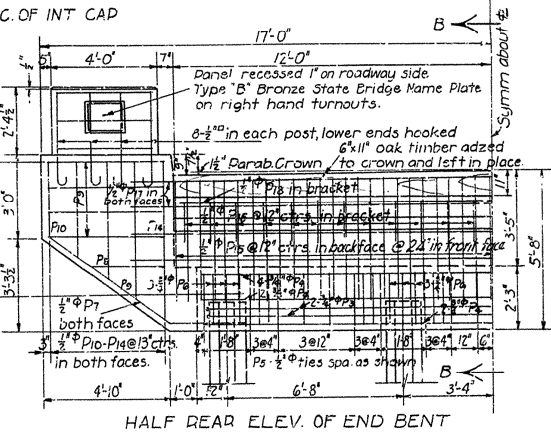
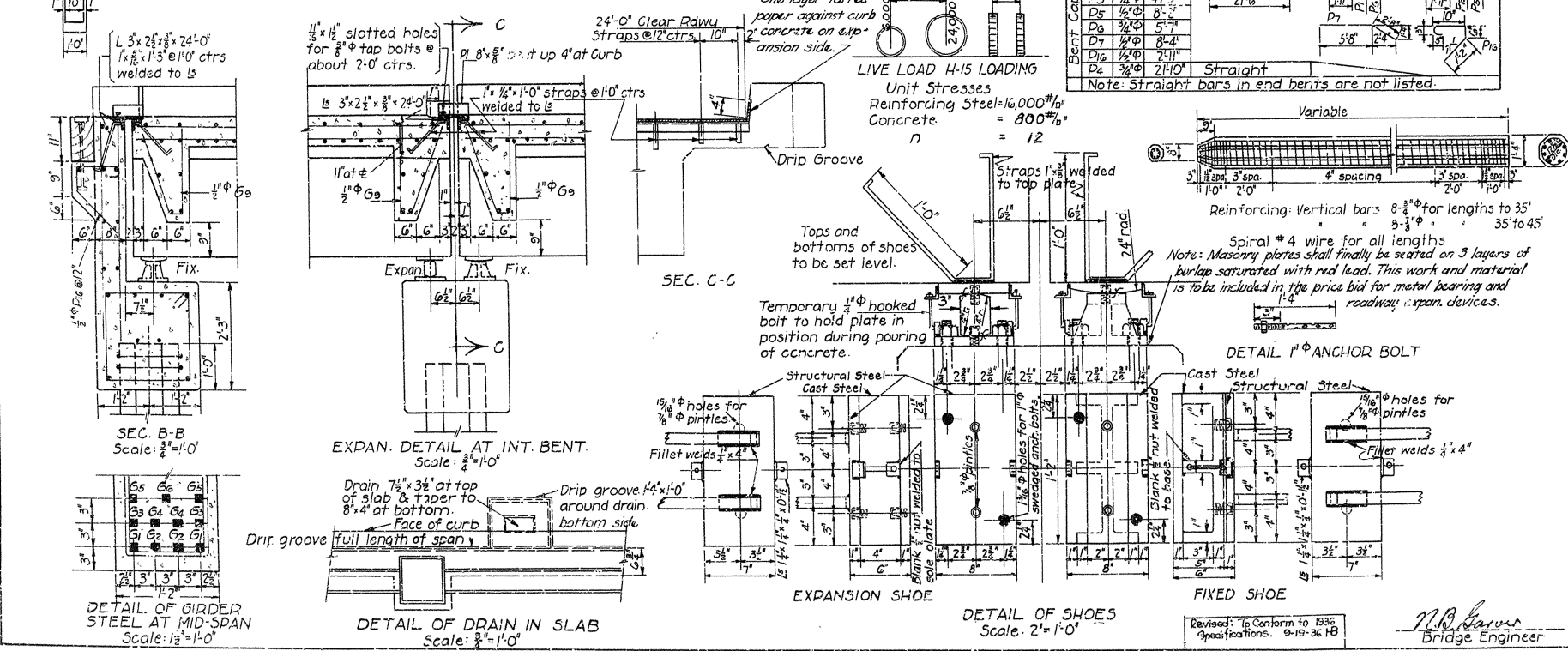
*N.B. Garner*  
Bridge Engineer



RAIL SECTION Scale: 1/2" = 1'-0"



BAR LIST		
Mark	Size	Length
S1	5/8"	27'-5"
S2	do	26'-4"
S3	do	27'-1"
S4	do	4'-1"
S5	3/8"	3'-6"
S6	1/2"	33'-4"
G1	1"	37'-2"
G2	do	35'-0"
G3	do	34'-8"
G4	do	36'-0"
G5	do	30'-4"
G6	1"	25'-10"
G7	1/2"	6'-7"
G8	do	6'-5"
G9	do	3'-10"
G10	1/4"	20'-9"
P1	3/4"	8'-7"
P2	1/2"	9'-2"
P3	3/4"	47'-3"
P4	1/2"	8'-1"
P5	3/4"	5'-7"
P6	1/2"	8'-4"
P7	1/2"	21'-11"
P8	1/2"	21'-0"



General Notes  
All exposed corners to have 1/4" chamfers unless otherwise noted.  
All concrete to be Class 'S'.  
Reinforcing steel to be deformed bars of structural or intermediate grade. Shop lists and bending diagrams must be submitted by the Contractor and approval secured before fabrication is begun.  
Oak headers to be included in volume of Class 'S' Concrete.  
Oak header bolts to be paid for at the unit price bid for reinforcing steel.  
Expansion devices and shoes are to be paid for at the unit price bid for metal bearing & roadway expansion devices, unless otherwise noted.  
Field Paint: All exposed parts of structural steel shall be given one priming coat of red lead and raw linseed oil. First top coat shall be white lead tinted with lamp black. Second top coat shall be aluminum paint.  
Concrete piling to be Class 'S', and to have a minimum capacity of 30 tons each.  
Specifications: Arkansas State Highway Commission, Standard Specifications for Road and Bridge Construction, adopted June 30, 1936.

DETAILS OF  
STANDARD 34'-0" R.C. DECK GIRDER  
AND CONCRETE PILE BENTS  
4 GIRDER TYPE, 4-5 PILE BENTS  
24'-0" CLEAR ROADWAY  
**ARKANSAS STATE HIGHWAY COMMISSION**  
**LITTLE ROCK, ARK.**  
Drawn by: W.C.H. Date: 7-26-35  
Traced by: A Date: 8-13-35 Scale: 3/8" = 1'-0" (except as noted)  
Checked by: Date: \_\_\_\_\_  
BRIDGE NO. 10341-17 DRWG NO. 2330  
W.B. Farmer  
Bridge Engineer