

13

VERTICAL CURVE DATA

Pl. Sta. 21+50
Elev. 290.5

Total Length of Bridge = 452'-2"

430'-0" Cont. Comp. Girder Unit (95', 120', 120' 95')

2" Sliding Plate Jt.

* Dimension of Deck & Bent to Low Seat of Cap

2" Sliding Plate Jt.

End Bridge Sta. 19+01.08
Elev. 315.44

Note: Use Type U Approach Gullies at both ends of Bridge. See Dwg. 189801

Beg. Bridge Sta. 14+60.92
Elev. 344.99

Concrete Parapet Rail

For Guard Rail - See Rwy. Plans

Existing Ground

Station 14+60, 2' R.R. E

For Elev. - See Abutment Details

Station 15+35, E

Station 16+20, 4' L.I. E

Station 17+05, E

Station 18+08, E

Station 19+01.08, E

ABT.1

BT.1

BT.2

BT.3

ABT.2

Q50 = 12500 c.f.s.
Normal W.S. Elev. 271.1
W.S. with Backwater Elev. 271.8

ELEVATION

Q100 = 13900 cfs.
Normal W.S. Elev. 271.7
W.S. with Backwater Elev. 272.4

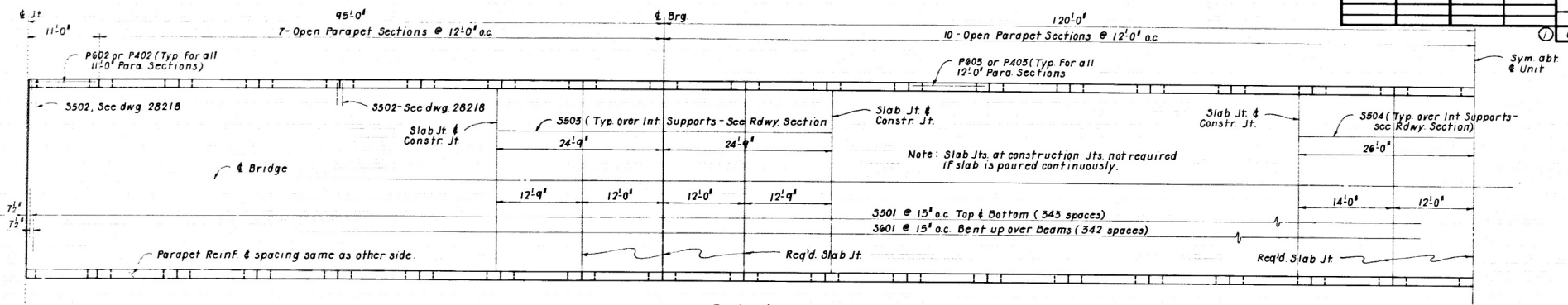
LAYOUT OF BRIDGE OVER
SPRING CREEK
SPRING CREEK BR. & APPRS.
INDEPENDENCE COUNTY

LITTLE ROCK, ARK.

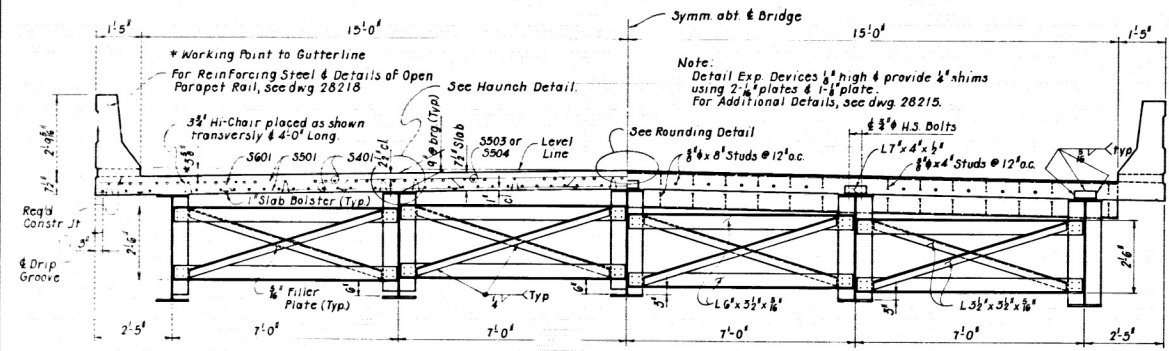
DRAWN BY: MRJ DATE: 5-28-85
CHECKED BY: DEL DATE: 10-24-85 SCALE: 1"=30'-0"
DESIGNED BY: DEL DATE: 5-28-85

BRIDGE NO. 6180 DRAWING NO. 28203

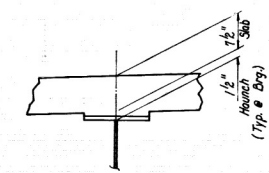
DATE REVISED	DATE FILMED	DATE REVISED	DATE FILMED	FED. ROAD DIST. NO.	STATE	FED. AID PROJ. NO.	SHEET NO.	TOTAL SHEETS
				6	ARK.			
						5886	23	52
				JOB NO.		SP4N	28213	



PLAN
1/8" = 1'-0"



ROADWAY SECTION
1/2" = 1'-0"

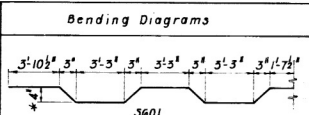


TYP. HAUNCH DETAIL
1" = 1'-0"

NOTE: TOLERANCES FOR SLAB THICKNESS IS MINUS 1/4" AND PLUS 1". PROVIDE HAUNCH AS REQUIRED TO MEET SLAB TOLERANCES. NO ADJUSTMENT FOR INCREASE IN CONCRETE AND STRUCTURAL STEEL QUANTITIES WILL BE MADE FOR HAUNCHES OR ANY THICKNESS OF SLAB TO MEET TOLERANCES.

BAR LIST

Mark	No. Req'd	Length	P/n Dia
S601	345	35'-2"	3/8"
P602	20	10'-6"	Str.
P603	340	11'-6"	Str.
S501	600	32'-6"	Str.
S502	518	4'-9"	Str.
S503	42	49'-6"	Str.
S504	46	52'-0"	Str.
S401	960	37'-4"	Str.
P402	16	10'-6"	Str.
P403	272	11'-6"	Str.
P404	576	6'-10"	2"
P405	576	6'-10"	2"
P406	576	6'-4"	2"
P407	576	3'-2"	2"



* 1/2" Overtolerance; No Undertolerance.

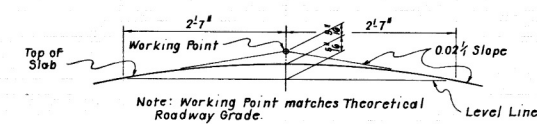
For bending diagrams of bars not shown, see dwg. 28218.

Dimensions are out to out of bars.

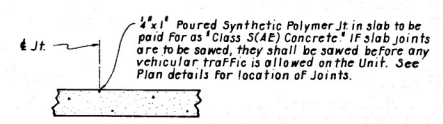
Pour (1)	Pour (2)	Pour (1)	Pour (2)
70'-3"	24'-9"	24'-9"	69'-3"
			26'-0"

Note: Pours with same number may be placed simultaneously or separately. All Pours (1) must be placed before pours (2) can be placed. 48 hours shall elapse between pours and 72 hours shall elapse between adjacent pours. Any failing pours made before the entire slab unit has been placed, must be approved by the Bridge Engineer.

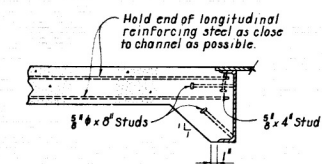
SLAB POURING SEQUENCE
N.T.S.



ROUNDING DETAIL
N.T.S.



SLAB JOINT
N.T.S.



ANCHOR DETAIL
N.T.S.

SHEET 1 OF 4
DETAILS OF 430'-0" CONT. PL GIRDER UNIT
SPRING CREEK
ROUTE SEC.
ARKANSAS STATE HIGHWAY COMMISSION
LITTLE ROCK, ARK.
DATE: 10-16-85
SCALE: As Shown
BRIDGE NO. 6180
DRAWING NO. 28213